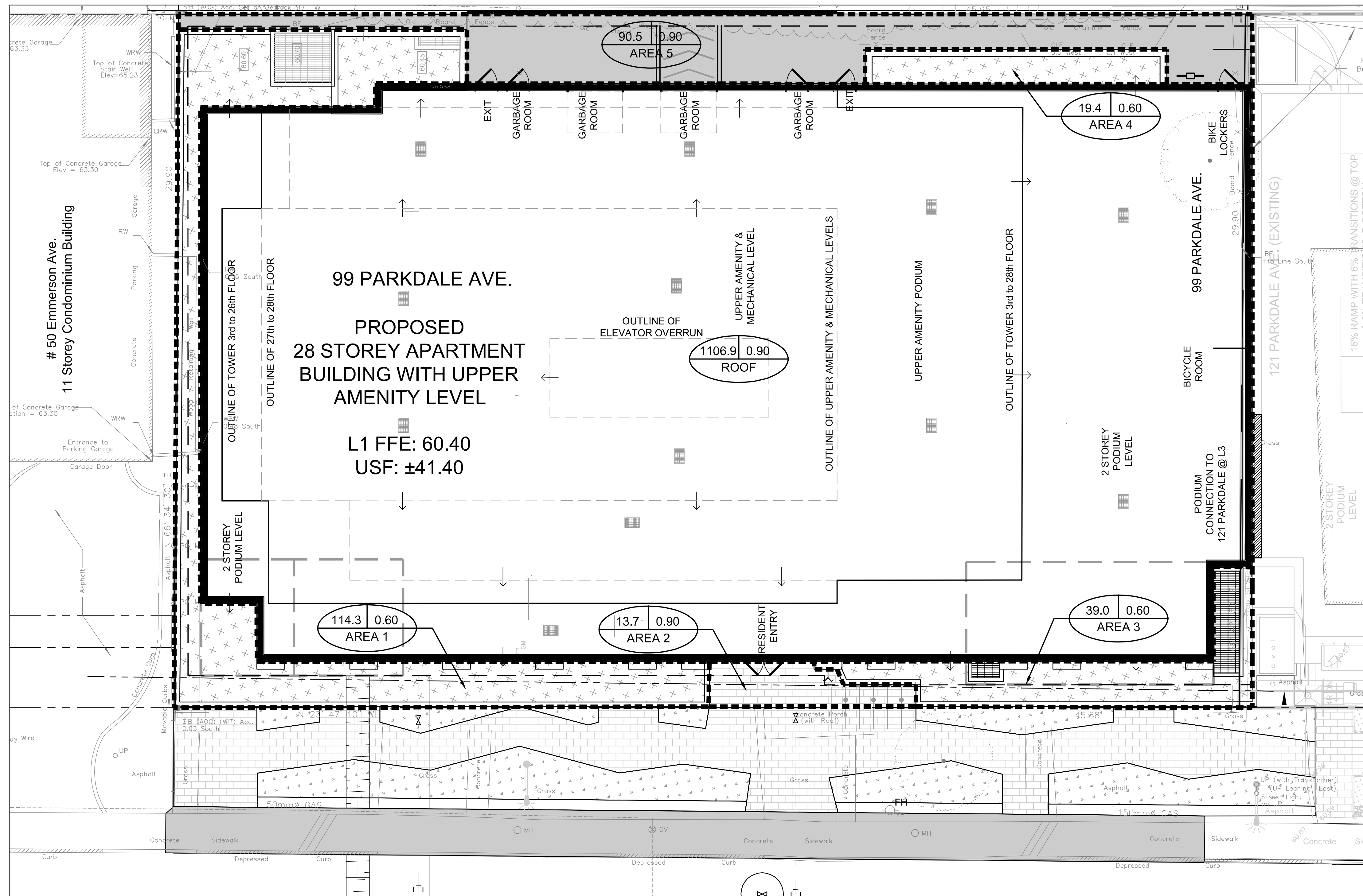
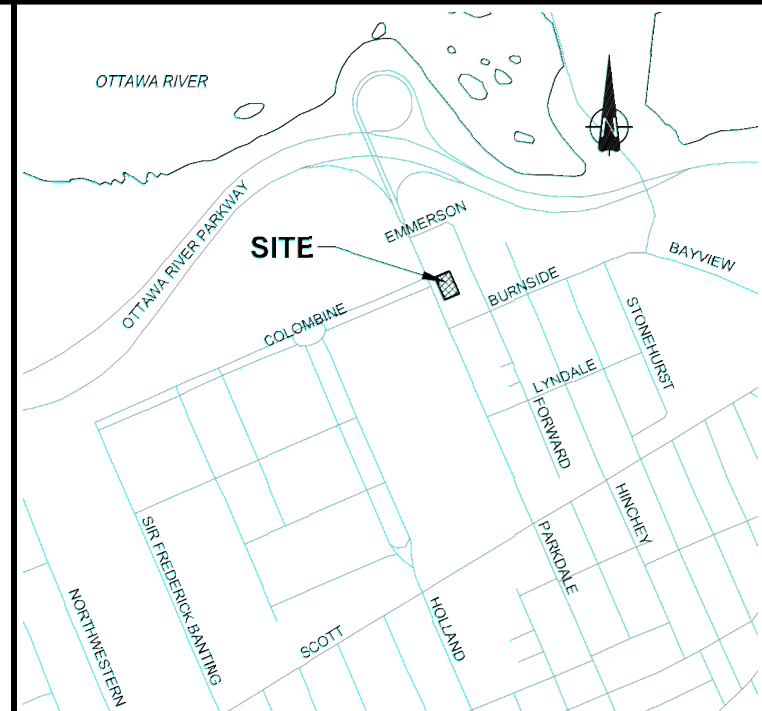


PRE DRAINAGE PLAN - SCALE 1:250



POST DRAINAGE PLAN - SCALE 1:100



LEGEND

- AREA IN SQUARE METRES
- RUNOFF COEFFICIENT (1.5mm)
- DRAINAGE AREA NUMBER
- POST DRAINAGE BOUNDARY
- POST DRAINAGE BOUNDARY
- AREA IN METRES
- RUNOFF COEFFICIENT
- CONCRETE SURFACE
- GRASS SURFACE
- INTERLOCK PATHWAY

NOTE: AREA NOTED WITH RUNOFF COEFFICIENT OF 0.60 REFLECTS PLANTERS

STORMWATER MANAGEMENT REQUIREMENTS:

TO LIMIT POST-DEVELOPMENT FLOWS TO THE ALLOWABLE RELEASE RATE, THE FOLLOWING SHOULD BE INCORPORATED INTO THE BUILDING DESIGN BY THE MECHANICAL ENGINEER:

- RUNOFF FROM THE CONDOMINIUM TOWER THAT IS COLLECTED INTERNALLY BY DRAINPIPES AND SEWERS IS TO BE CONVEYED TO A CENTRALIZED CISTERNS STORAGE TANK WHICH WILL BE DESIGNED BY THE MECHANICAL ENGINEER WITH A MINIMUM STORAGE VOLUME OF 24 M³.
- THE CISTERNS STORAGE TANK TO INCORPORATE A CUSTOM INLET CONTROL DEVICE (ICD) SIZED BY THE MECHANICAL ENGINEER TO RELEASE A MAXIMUM OUTFLOW RATE OF 25.6 L/S (WHEN FULL) BASED ON THE MAXIMUM HEAD DIFFERENTIAL.
- CISTERNS STORAGE TANK TO INCORPORATE AN OVERFLOW DRAIN BEYOND THE 24 M³ OF CONTAINMENT, THE OVERFLOW TO BE DESIGNED BY THE MECHANICAL ENGINEER WITH SUFFICIENT CAPACITY TO EVACUATE EXCESS RUNOFF BEYOND THE CAPACITY OF THE CISTERNS STORAGE TANK.

AREAS	0.60	0.90
1	114.3	
2		13.7
3	39.0	
4	19.4	
5		90.5
ROOF		1106.9

No.	ISSUE / REVISION	DD/MM/YY
03	ISSUED TO CITY FOR REVIEW - THIRD SUBMISSION	13/03/2020
02	ISSUED TO CITY FOR REVIEW - SECOND SUBMISSION	07/02/2020
01	ISSUED TO CITY FOR REVIEW - FIRST SUBMISSION	22/10/2019

This drawing is copyright protected and may not be reproduced or used for purposes other than execution of the described work without the express written consent of J.L. Richards & Associates Limited.

VERIFY SHEET SIZE AND SCALES. BAR TO THE RIGHT IS 25mm IF THIS IS A FULL SIZE DRAWING.

SCALE: 1:100

CLIENT:

BRIGIL

CONSULTANT:

J.L. Richards
ENGINEERS - ARCHITECTS - PLANNERS

CONSULTANT:

PROFESSIONAL STAMP

PROJECT NORTH

PROFESSIONAL ENGINEER
M. N. L. DALRYMPLE
2020/13/20
PROVINCE OF ONTARIO

PROJECT:

99 PARKDALE AVENUE

OTTAWA ONTARIO

DRAWING:

DRAINAGE AND STORMWATER MANAGEMENT PLAN

Saide Sayah

SAIDE SAYAH
MANAGER, CENTRAL BRANCH
PLANNING, INFRASTRUCTURE & ECONOMIC
DEVELOPMENT DEPARTMENT, CITY OF OTTAWA

APPROVED
By Saide Sayah at 12:45 pm, Oct 19, 2020

DESIGN: SP	DRAWING #:
DRAWN: SP	DST
CHECKED: LD	
JLR #:	25205-100