

TOPOGRAPHICAL PLAN OF
LOTS 4, 5 AND 6
EAST PARKDALE AVENUE
 (FORMERLY FIFTH STREET)
REGISTERED PLAN 41
CITY OF OTTAWA
 Prepared by Annis, O'Sullivan, Vollebakk Ltd.

Scale 1 : 125
 0 0.75 1.5 2.25 3 Metres

Metric
 DISTANCES SHOWN ON THIS PLAN ARE IN METRES AND
 CAN BE CONVERTED TO FEET BY DIVIDING BY 0.3048

Date _____
 Edward M. Lancaster, O.L.S.

- Notes & Legend**
- | | | |
|--|---------|---------------------------------|
| | Denotes | Deciduous Tree |
| | | Fire Hydrant |
| | | Maintenance Hole (Unidentified) |
| | | Overhead Wires |
| | | Catch Basin |
| | | Gas Meter |
| | | Chain Link Fence |
| | | Board Fence |
| | | Metal Pole |
| | | Utility Pole |
| | | Anchor |
| | | Location of Elevations |
| | | Centreline |
| | | Property Line |
| | | Tree Line |
| | | Wood Retaining Wall |
| | | Concrete Retaining Wall |

Topographic data was collected under Winter Conditions.
 Snow cover and ice preclude determining location and
 elevation of some topographical data that is otherwise visible.

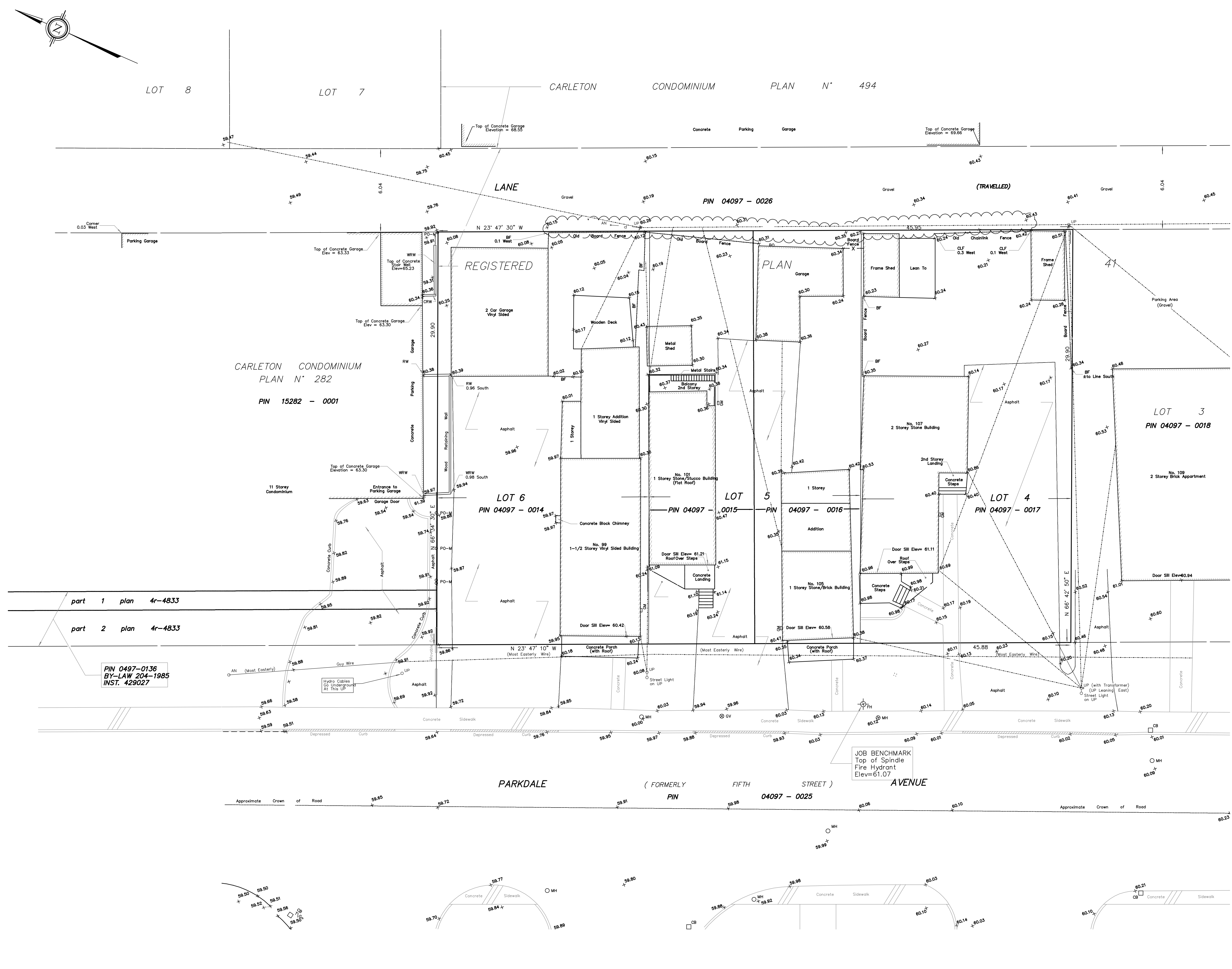
Bearings are MTM grid bearings, derived from simultaneous
 GPS observations and are referred to the Central Meridian of
 Zone 9 of the Ontario Coordinate System, Longitude 76°30'
 West (MTM NAD-83).

SITE AREA = 1372.7 m²

BOUNDARY INFORMATION DERIVED FROM
 FIELD SURVEY, REGISTRY OFFICE AND
 OFFICE RECORDS.

ELEVATION NOTES
 1. Elevations shown are referred to geodetic datum.
 2. It is the responsibility of the user of this information to verify that the job benchmark
 has not been altered or disturbed and that its relative elevation and description
 agrees with the information shown on this drawing.

UTILITY NOTES
 1. This drawing cannot be accepted as acknowledging all of the utilities and it will
 be the responsibility of the user to contact the respective utility authorities for
 confirmation.
 2. Only visible surface utilities were located.
 3. A field location of underground plant by the pertinent utility authority is
 mandatory before any work involving breaking ground, probing, excavating etc.



PIN 0497-0136
 BY-LAW 204-1985
 INST. 429027

JOB BENCHMARK
 Top of Spindle
 Fire Hydrant
 Elev=61.07