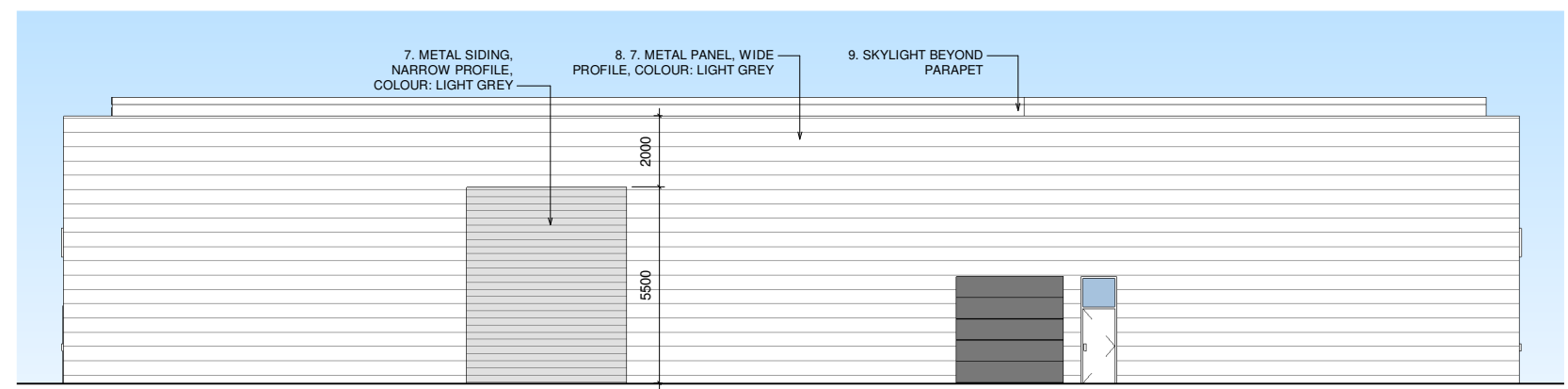
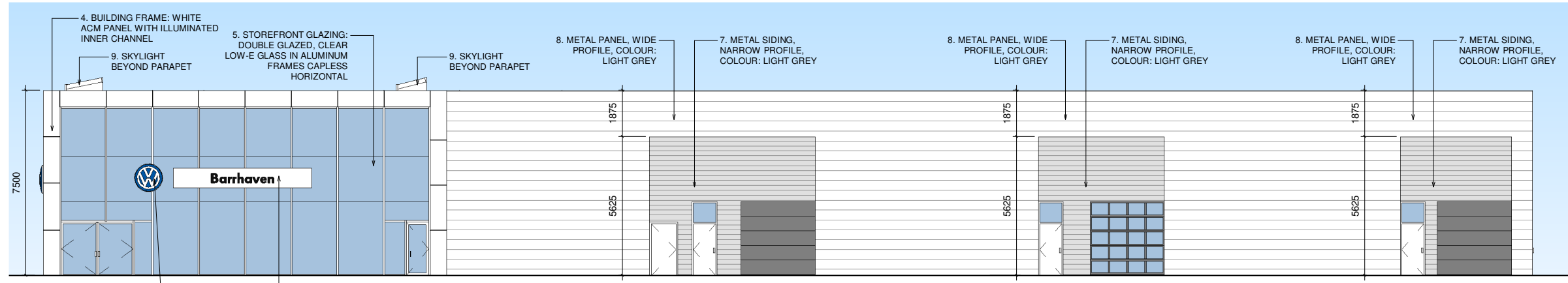


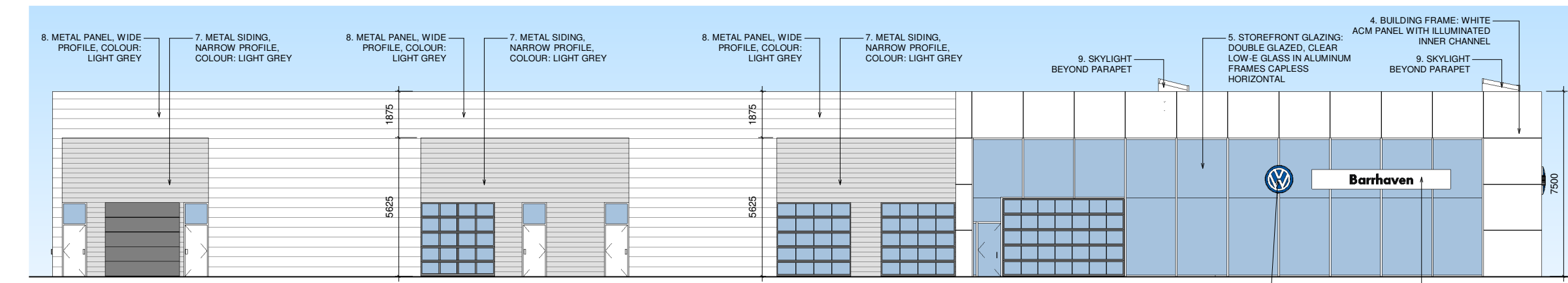
The purpose of these drawings is to convey the design intent and finish material specifications only. They are not to be used to obtain building permits or for actual construction of the project. Construction documents are to be prepared by licensed professionals who are willing to accept responsibility for proper applications.



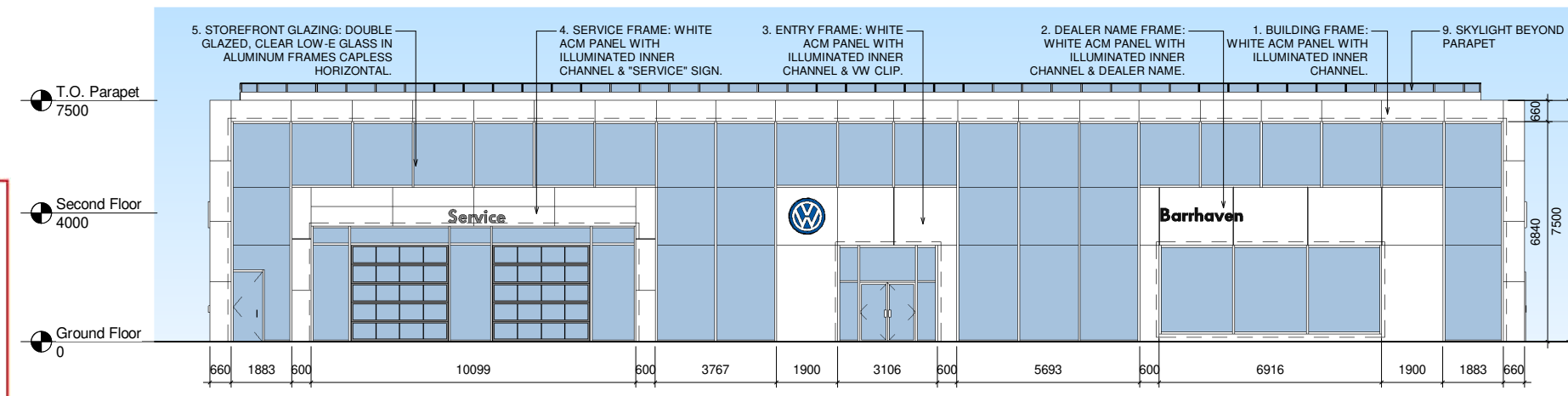
1 West  
1 : 200



4 North  
1 : 200



2 South  
1 : 200



3 East (front)  
1 : 200

- LEGEND**
- BUILDING FRAME: WHITE ACM PANEL WITH ILLUMINATED INNER CHANNEL.
  - DEALER NAME FRAME: WHITE ACM PANEL WITH ILLUMINATED INNER CHANNEL & DEALER NAME.
  - ENTRY FRAME: WHITE ACM PANEL WITH ILLUMINATED INNER CHANNEL & VW CLIP.
  - SERVICE FRAME: WHITE ACM PANEL WITH ILLUMINATED INNER CHANNEL & "SERVICE" SIGN.
  - STOREFRONT GLAZING: DOUBLE GLAZED, CLEAR LOW-E GLASS IN ALUMINUM FRAMES CAPLESS HORIZONTAL AT MIDDLE.
  - DEALER NAME ELEMENT: WHITE ACM.
  - METAL PANEL, WIDE PROFILE, COLOUR: LIGHT GREY.
  - METAL SIDING, NARROW PROFILE, COLOUR: LIGHT GREY.
  - SKYLIGHT BEYOND PARAPET.

No	DATE	ISSUED / REVISION	BY
V2R2	2020-06-11	Issued for Dealer Review	AB
V2R1	2020-06-04	Issued for Dealer Review	AB
V2R0	2020-05-26	Issued for Dealer Review	AB



**WEIS**  
Weis & Associates Inc.  
310 Spadina Avenue, Suite 100A  
Toronto, Ontario M5T 2E8  
tel: 416.967.WEIS(9347)  
website: www.weis.ca

**Barrhaven Volkswagen**  
4149 Strandherd Drive  
Nepean, ON  
New Construction

**Elevations**

SCALE 1 : 200	PROJECT NO. 811-3244
DRAWN LR SUPERVISED MK	DRAWING NO. <b>A2.0</b>
DATE June 11, 2020	VERSION <b>V2R2</b>

**APPROVED**  
By Lily Xu at 11:50 am, Nov 16, 2020

LILY XU, MCIP, RPP  
MANAGER, DEVELOPMENT REVIEW SOUTH  
PLANNING, INFRASTRUCTURE & ECONOMIC  
DEVELOPMENT DEPARTMENT, CITY OF OTTAWA