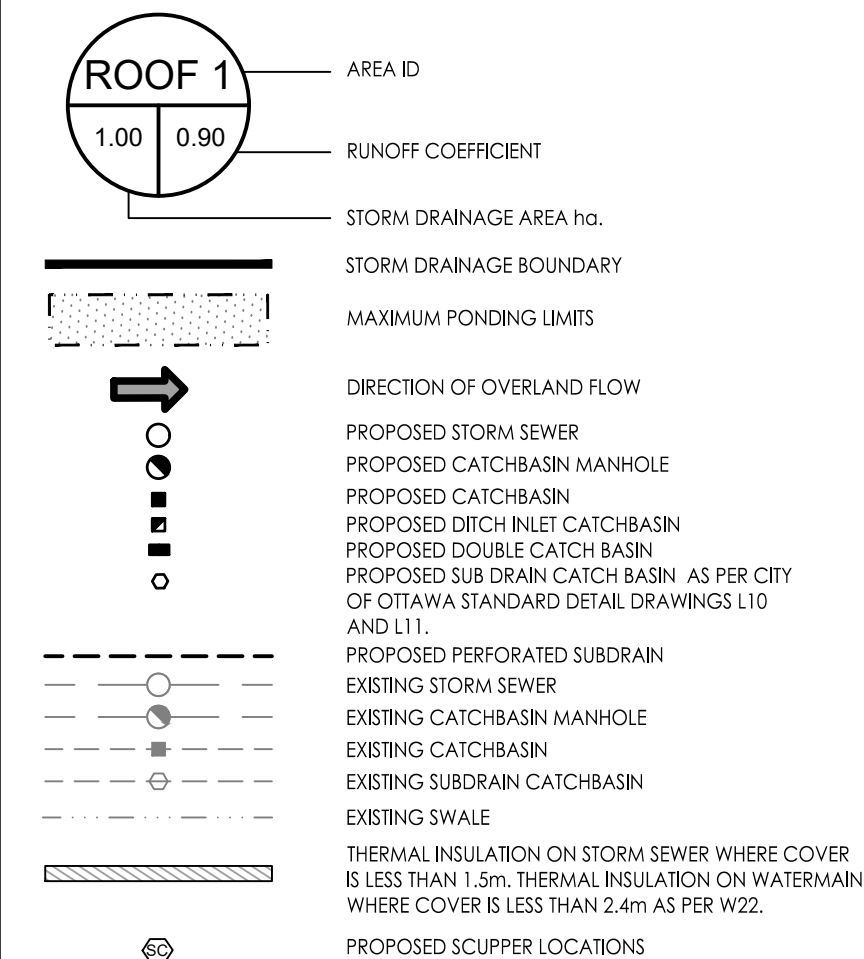


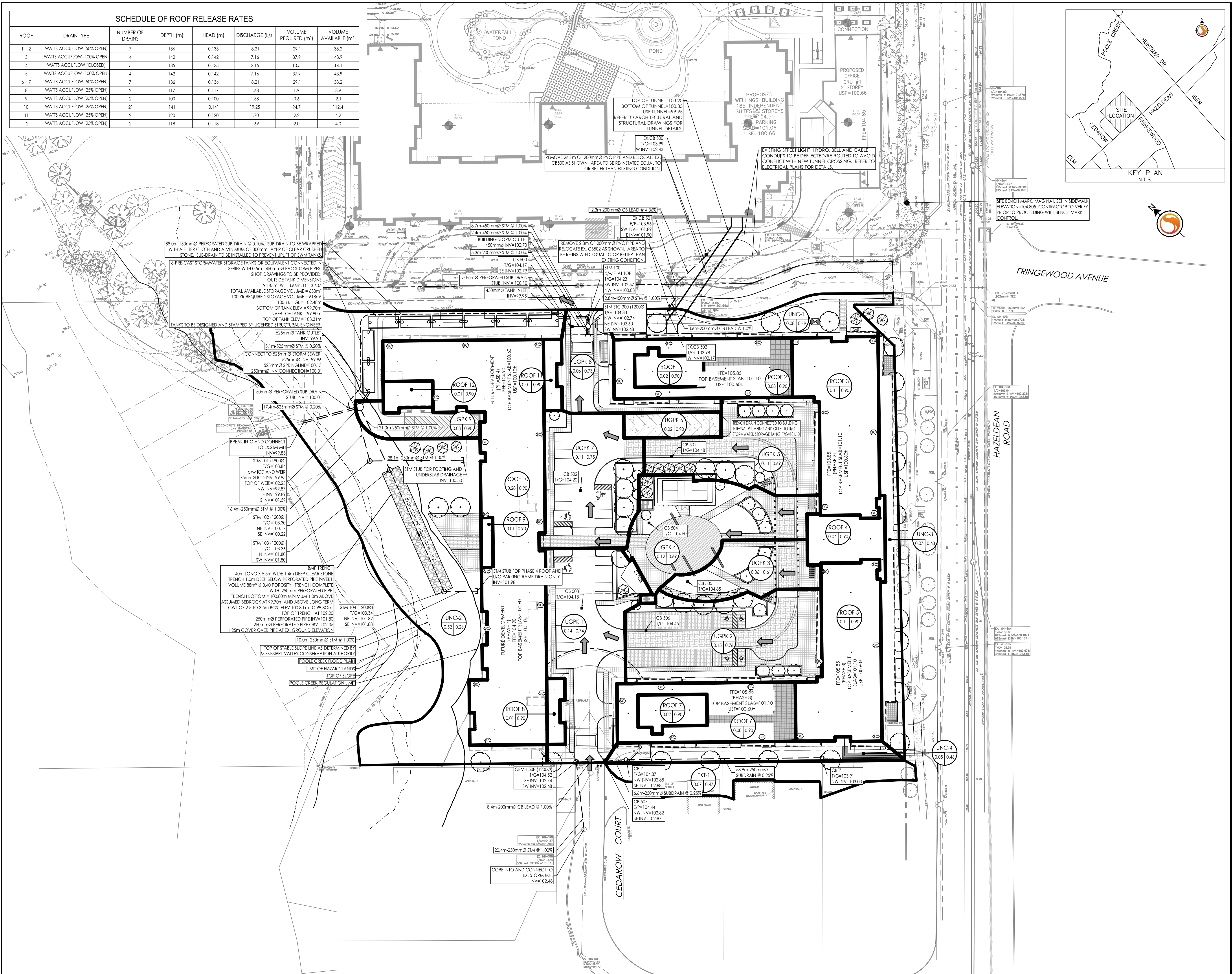
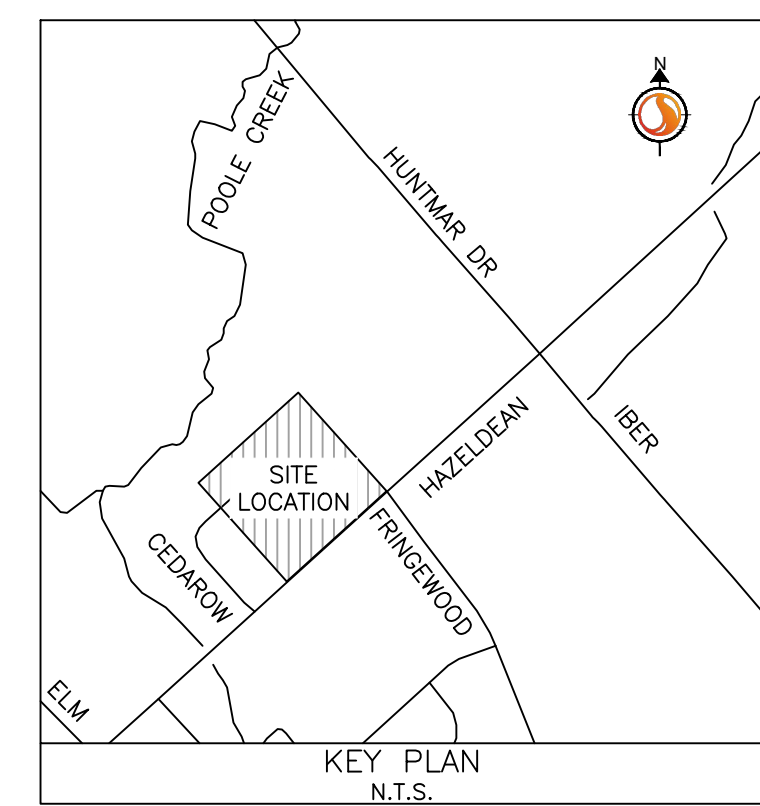
Copyright Reserved

The Contractor shall verify and be responsible for all dimensions. DO NOT scale the drawing - any errors or omissions shall be reported to Stantec without delay.  
The Copyrights to all designs and drawings are the property of Stantec. Reproduction or use for any purpose other than that authorized by Stantec is forbidden.

Legend



SCHEDULE OF ROOF RELEASE RATES							
ROOF	DRAIN TYPE	NUMBER OF DRAINS	DEPTH (m)	HEAD (m)	DISCHARGE (L/s)	VOLUME REQUIRED (m <sup>3</sup> )	VOLUME AVAILABLE (m <sup>3</sup> )
1+2	WATTS ACCUFLOW (50% OPEN)	7	136	0.136	8.21	29.1	38.2
3	WATTS ACCUFLOW (100% OPEN)	4	142	0.142	7.14	37.9	43.9
4	WATTS ACCUFLOW (CLOSED)	5	135	0.135	3.15	10.5	14.1
5	WATTS ACCUFLOW (100% OPEN)	4	142	0.142	7.14	37.9	43.9
6+7	WATTS ACCUFLOW (50% OPEN)	7	136	0.136	8.21	29.1	38.2
8	WATTS ACCUFLOW (25% OPEN)	2	117	0.117	1.68	1.9	3.9
9	WATTS ACCUFLOW (25% OPEN)	2	100	0.100	1.58	0.6	2.1
10	WATTS ACCUFLOW (25% OPEN)	21	141	0.141	19.25	94.7	112.4
11	WATTS ACCUFLOW (25% OPEN)	2	120	0.120	1.70	2.2	4.2
12	WATTS ACCUFLOW (25% OPEN)	2	118	0.118	1.69	2.0	4.0



Revision	Description	By	Appd.	YY.MM.DD
4	REVISED AS PER CITY COMMENTS	MJS	DT	22.03.29
3	REVISED AS PER CITY COMMENTS	MJS	TR	21.09.02
2	ISSUED FOR GEOTECH REVIEW	MJS	DT	21.08.03
1	ISSUED TO CITY FOR SPA	MJS	DT	20.05.22

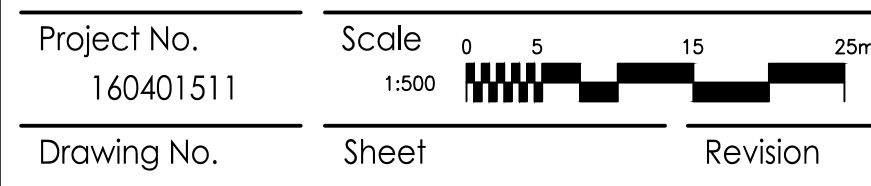
Revision	Description	By	Appd.	YY.MM.DD
1	ISSUED TO CITY FOR SPA	MJS	DT	20.05.22

File Name: 160401511-08 MJS DT MJS 19.09.05  
Dwn. Chkd. Dgn. YY.MM.DD

Permit-Seal

Client/Project  
NAUTICAL LANDS GROUP  
2962 Carp Road  
WELLINGS OF STITTSVILLE PH 2  
20 CEDAROW COURT  
OTTAWA, ON

Title  
STORM DRAINAGE PLAN



V:\10\160401511\160401511-08.dwg 2022/03/29 3:05 PM BY: STANTEC