

Legend

- G1A** SANITARY DRAINAGE AREA ID#
- 0.38 INF** INFILTRATION RATES
- SANITARY DRAINAGE AREA ha.
- SANITARY DRAINAGE AREA
- PROPOSED SANITARY SEWER
- EXISTING SANITARY SEWER

SANITARY STATS

POPULATION COUNT - PHASE 2 & 3

222 - 1 BEDROOM APTS @ 1.4PPU = 311 PEOPLE
62 - 2 BEDROOM APTS @ 2.1PPU = 130 PEOPLE
TOTAL POPULATION = 441

POPULATION COUNT - PHASE 4

154 - 1 BEDROOM APTS @ 1.4PPU = 216 PEOPLE
46 - 2 BEDROOM APTS @ 2.1PPU = 97 PEOPLE
TOTAL POPULATION = 313

COMMERCIAL AREA

TOTAL COMMERCIAL SPACE = 980m² (0.098ha) @ 28,000 L/ha/day

5	REVISED AS PER CITY COMMENTS	MJS	DT	22.07.14
4	REVISED AS PER CITY COMMENTS	MJS	DT	22.03.29
3	REVISED AS PER CITY COMMENTS	MJS	TR	21.09.02
2	ISSUED FOR GEOTECH REVIEW	MJS	DT	21.08.03
1	ISSUED TO CITY FOR SPA	MJS	DT	20.05.22
Revision		By	Appd.	YY.MM.DD
File Name:	160401511-08	MJS	DT	MJS
		Dwn.	Chkd.	Dgn.
				YY.MM.DD

Permit-Seal

Client/Project

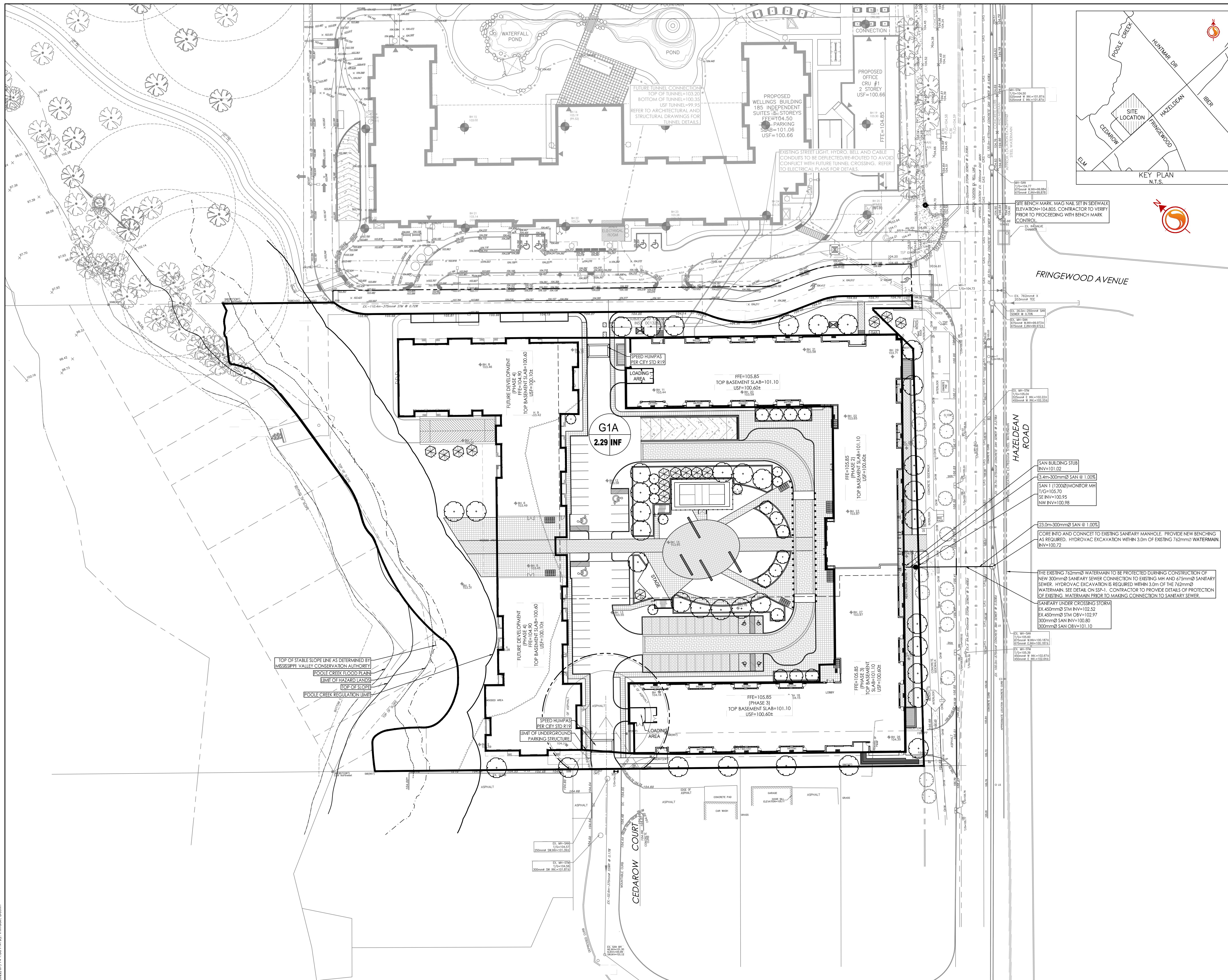
NAUTICAL LANDS GROUP
2962 Carp Road

WELLINGS OF STITTSVILLE PH 2
20 CEDAROW COURT
OTTAWA, ON

Title

SANITARY DRAINAGE PLAN

Project No.	Scale	0	5	15	25m
160401511	1:500				
Drawing No.	Sheet	Revision			
SA-1	7 of 7	5			



W:\active\160401511\design\drawings\160401511-08.dwg
22/07/14 1:50 PM by: mtdm@stn.com