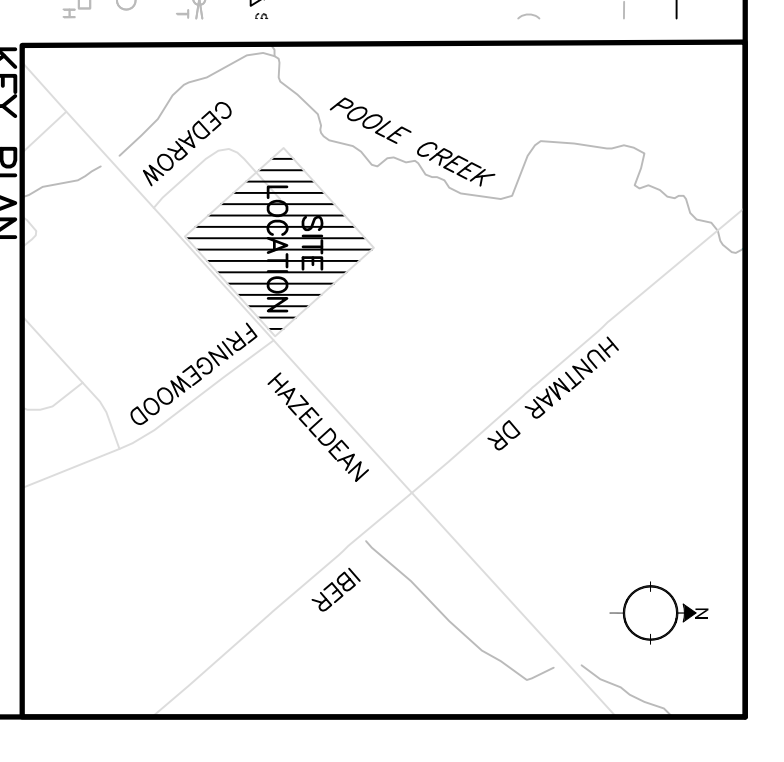


**GENERAL NOTES**

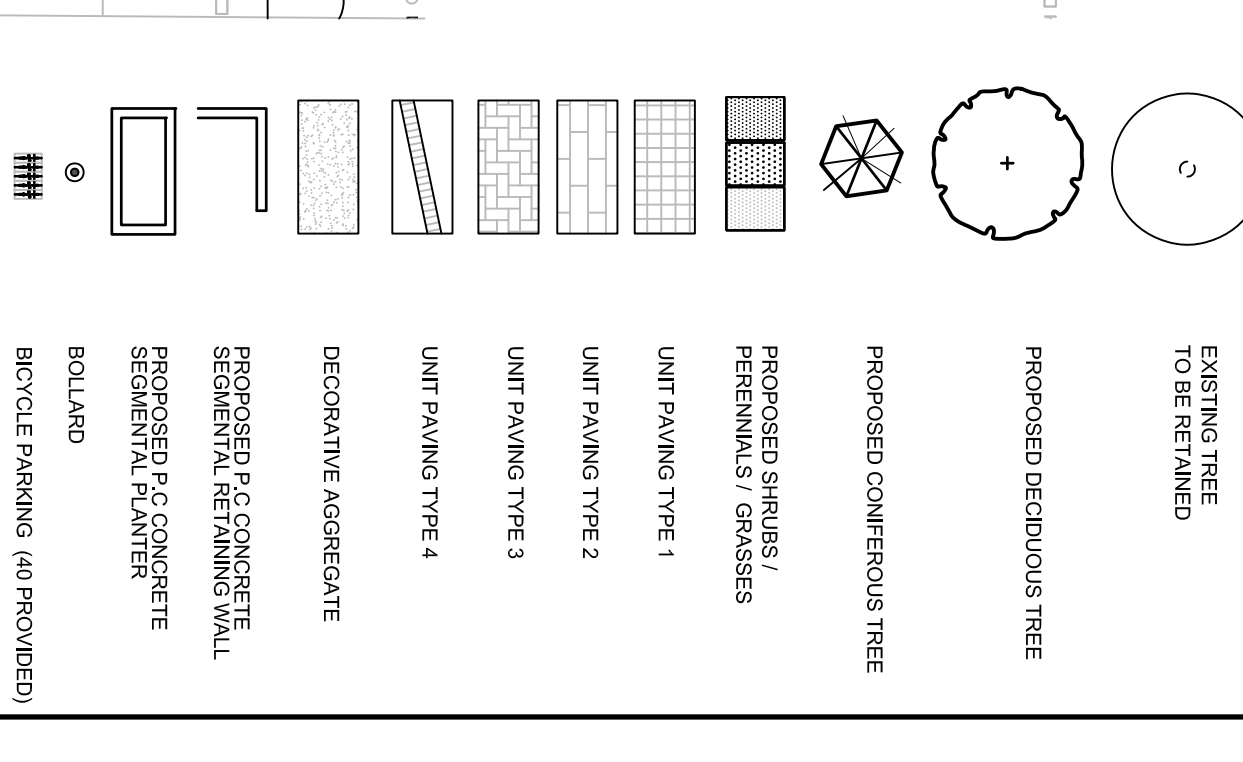
- The drawing shall be read in conjunction with all relevant documents, including Engineering and Related Drawings and Reports.
- Refer to Engineering Drawings for Grading and Erosion Control.
- Refer to Architectural Drawings for Site Layout.
- Contractor shall provide the location of all proposed trees to be retained, and shall provide the location of all proposed trees to be removed.
- Plant material shall be No. 1 Grade and shall comply with the requirements of the Canadian Nursery Trade Association (CNTRA) Standard.
- Plant General locations as Schematic / Approximate.
- Plant Contractor shall state the location of all plants to be planted.
- Contractor shall guarantee all plant material for a period of 12 months from the date of planting.
- Perennials and Ornamental Grasses shall be planted in a continuous prepared bed of 450mm depth planting soil, mulched with 50mm of organic mulch.
- Plant material shall be No. 1 WEED CONTROL FABRIC (as specified).
- Restoration of areas damaged or disturbed beyond the limits of the proposed site shall be the responsibility of the Contractor.
- Plant Material substitutions shall not be permitted without written approval from the Consultant. See Part 14.1 of the Specifications for details.
- Plant material shall be supplied to the site in accordance with the Specifications.
- Provide protection for existing trees to be retained.
- Contractor shall provide for the protection of existing trees, including the use of root barriers, mulch, and other appropriate measures.
- Where root systems become exposed due to excavation, mulch shall be used to protect the roots.
- Contractor shall advise Consultant a minimum of 48hrs. prior to any tree removal.
- This Plan HAS BEEN PREPARED FOR MUNICIPAL REVIEW ONLY. THIS PLAN IS NOT TO BE USED FOR ANY OTHER PURPOSE.

**PLANT MATERIAL SCHEDULE**

CODE	LEAVES	COMMON NAME	QTY	SIZE	REMARKS
1	PERENNIALS	BLACK CHERRYBERRY	60	50cm H	postcut, 100cm oc
2	PERENNIALS	BLACK CHERRYBERRY	60	50cm H	postcut, 100cm oc
3	PERENNIALS	BLACK CHERRYBERRY	60	50cm H	postcut, 100cm oc
4	PERENNIALS	BLACK CHERRYBERRY	60	50cm H	postcut, 100cm oc
5	PERENNIALS	BLACK CHERRYBERRY	60	50cm H	postcut, 100cm oc
6	PERENNIALS	BLACK CHERRYBERRY	60	50cm H	postcut, 100cm oc
7	PERENNIALS	BLACK CHERRYBERRY	60	50cm H	postcut, 100cm oc
8	PERENNIALS	BLACK CHERRYBERRY	60	50cm H	postcut, 100cm oc
9	PERENNIALS	BLACK CHERRYBERRY	60	50cm H	postcut, 100cm oc
10	PERENNIALS	BLACK CHERRYBERRY	60	50cm H	postcut, 100cm oc
11	PERENNIALS	BLACK CHERRYBERRY	60	50cm H	postcut, 100cm oc
12	PERENNIALS	BLACK CHERRYBERRY	60	50cm H	postcut, 100cm oc
13	PERENNIALS	BLACK CHERRYBERRY	60	50cm H	postcut, 100cm oc
14	PERENNIALS	BLACK CHERRYBERRY	60	50cm H	postcut, 100cm oc

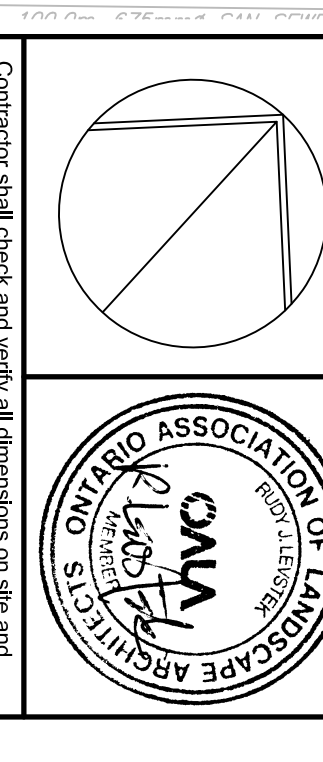


**LEGEND / SYMBOL**



**NOT FOR CONSTRUCTION**

NO.	DATE	REVISION
1.	AUG/2019	ISSUE FOR UDRP
2.	NOV/2019	ISSUE FOR SITE PLAN APPROVAL
3.	MAY/2020	RE-ISSUE FOR SITE PLAN APPROVAL



**LEVSTEK CONSULTANTS**  
 4881 Highway 7 East, Suite 201B, Markham, Ontario L3R 9V7  
 Tel: (905) 947-8888 Fax: (905) 947-8889  
 www.levstek.com



**WELLINGS OF STITTSVILLE PHASE 2**  
**LANDSCAPE PLAN**  
 Drawing Title: LANDSCAPE PLAN  
 Date: AUG. 2019  
 Project No.: 1184  
 Drawing No.: L1,01

Scale: 1:300