

Copyright Reserved

The Contractor shall verify and be responsible for all dimensions. DO NOT scale the drawing - any errors or omissions shall be reported to Stantec without delay.
The Copyrights to all designs and drawings are the property of Stantec. Reproduction or use for any purpose other than that authorized by Stantec is forbidden.

Legend

- PROPOSED WATERMAIN
- PROPOSED VALVE AND VALVE BOX
- PROPOSED REDUCER
- PROPOSED FIRE HYDRANT
- PROPOSED SANITARY SEWER
- PROPOSED STORM SEWER
- PROPOSED CATCHBASIN MANHOLE
- PROPOSED CATCH BASIN
- ALL CATCH BASINS TO BE CONNECTED TO INTERNAL PLUMBING AND DRAIN TO EXTERIOR STORM WATER MANAGEMENT TANKS.
- PROPOSED DITCH INLET CATCHBASIN
- EXISTING WATERMAIN
- EXISTING VALVE AND VALVE BOX
- EXISTING VALVE CHAMBER
- EXISTING FIRE HYDRANT
- EXISTING SANITARY SEWER
- EXISTING STORM SEWER
- EXISTING CATCHBASIN MANHOLE
- EXISTING CATCHBASIN
- EXISTING SUBDRAIN CATCHBASIN
- EXISTING SWALE
- PROPOSED DEPRESSED CURB LOCATIONS
- PROPOSED MOUNTABLE/BARRIER CURB LOCATION
- THERMAL INSULATION ON STORM SEWER WHERE COVER IS LESS THAN 1.5m. THERMAL INSULATION ON WATERMAIN WHERE COVER IS LESS THAN 2.4m AS PER W22.
- WATER METER
- REMOTE WATER METER

NOTES:

- UNDERGROUND PARKING RAMP TRENCH DRAINS TO BE CONVEYED THROUGH BUILDING AND OUTLET INTO EXTERNAL UNDERGROUND STORM WATER MANAGEMENT STORAGE TANKS.
- ALL SURFACE CATCH BASINS INSTALLED ON TOP OF UNDERGROUND PARKING STRUCTURE TO BE CONVEYED THROUGH BUILDING AND OUTLET INTO EXTERNAL UNDERGROUND STORM WATER MANAGEMENT STORAGE TANKS.
- PROPOSED FIRE HYDRANT TO BE SERVICED THROUGH BUILDINGS INTERNAL PLUMBING.
- ALL CATCHBASINS AND FIRE HYDRANTS INSTALLED ON TOP OF PARKING GARAGE STRUCTURE ARE TO BE INSTALLED BY OTHERS.
- INTERNAL GARAGE DRAINS TO BE CONNECTED TO THE SANITARY SEWER.
- AT THE COMPLETION OF CONSTRUCTION A WATER SYSTEM PRESSURE CHECK IS REQUIRED TO BE COMPLETED TO DETERMINE IF PRESSURE CONTROL DEVICES ARE REQUIRED.

Revision	By	Appd.	Y/M/D	
4	REVISED AS PER CITY COMMENTS	MJS	DT	22.03.29
3	REVISED AS PER CITY COMMENTS	MJS	TR	21.09.02
2	ISSUED FOR GEOTECH REVIEW	MJS	DT	21.08.03
1	ISSUED TO CITY FOR SPA	MJS	DT	20.05.22

Revision	By	Appd.	Y/M/D	
1	ISSUED TO CITY FOR SPA	MJS	DT	20.05.22

File Name:	MJS	DT	MJS	Y/M/D
16401511-08				19.09.05

Revision	By	Appd.	Y/M/D	
1	ISSUED TO CITY FOR SPA	MJS	DT	20.05.22

Revision	By	Appd.	Y/M/D	
1	ISSUED TO CITY FOR SPA	MJS	DT	20.05.22

Revision	By	Appd.	Y/M/D	
1	ISSUED TO CITY FOR SPA	MJS	DT	20.05.22

Revision	By	Appd.	Y/M/D	
1	ISSUED TO CITY FOR SPA	MJS	DT	20.05.22

Revision	By	Appd.	Y/M/D	
1	ISSUED TO CITY FOR SPA	MJS	DT	20.05.22

Revision	By	Appd.	Y/M/D	
1	ISSUED TO CITY FOR SPA	MJS	DT	20.05.22

Revision	By	Appd.	Y/M/D	
1	ISSUED TO CITY FOR SPA	MJS	DT	20.05.22

Revision	By	Appd.	Y/M/D	
1	ISSUED TO CITY FOR SPA	MJS	DT	20.05.22

Revision	By	Appd.	Y/M/D	
1	ISSUED TO CITY FOR SPA	MJS	DT	20.05.22

Revision	By	Appd.	Y/M/D	
1	ISSUED TO CITY FOR SPA	MJS	DT	20.05.22

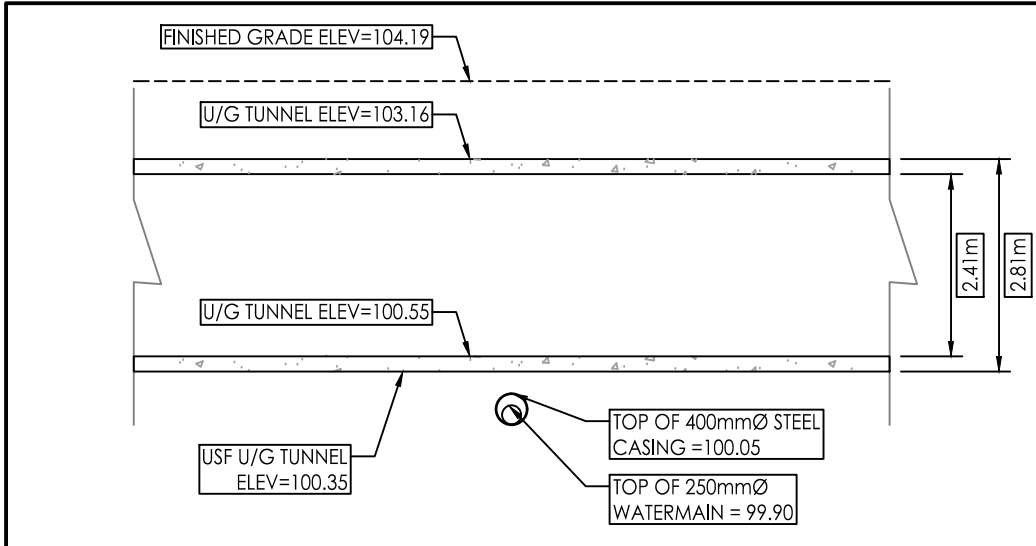
Revision	By	Appd.	Y/M/D	
1	ISSUED TO CITY FOR SPA	MJS	DT	20.05.22

Revision	By	Appd.	Y/M/D	
1	ISSUED TO CITY FOR SPA	MJS	DT	20.05.22

Revision	By	Appd.	Y/M/D	
1	ISSUED TO CITY FOR SPA	MJS	DT	20.05.22

SCHEDULE OF ROOF RELEASE RATES

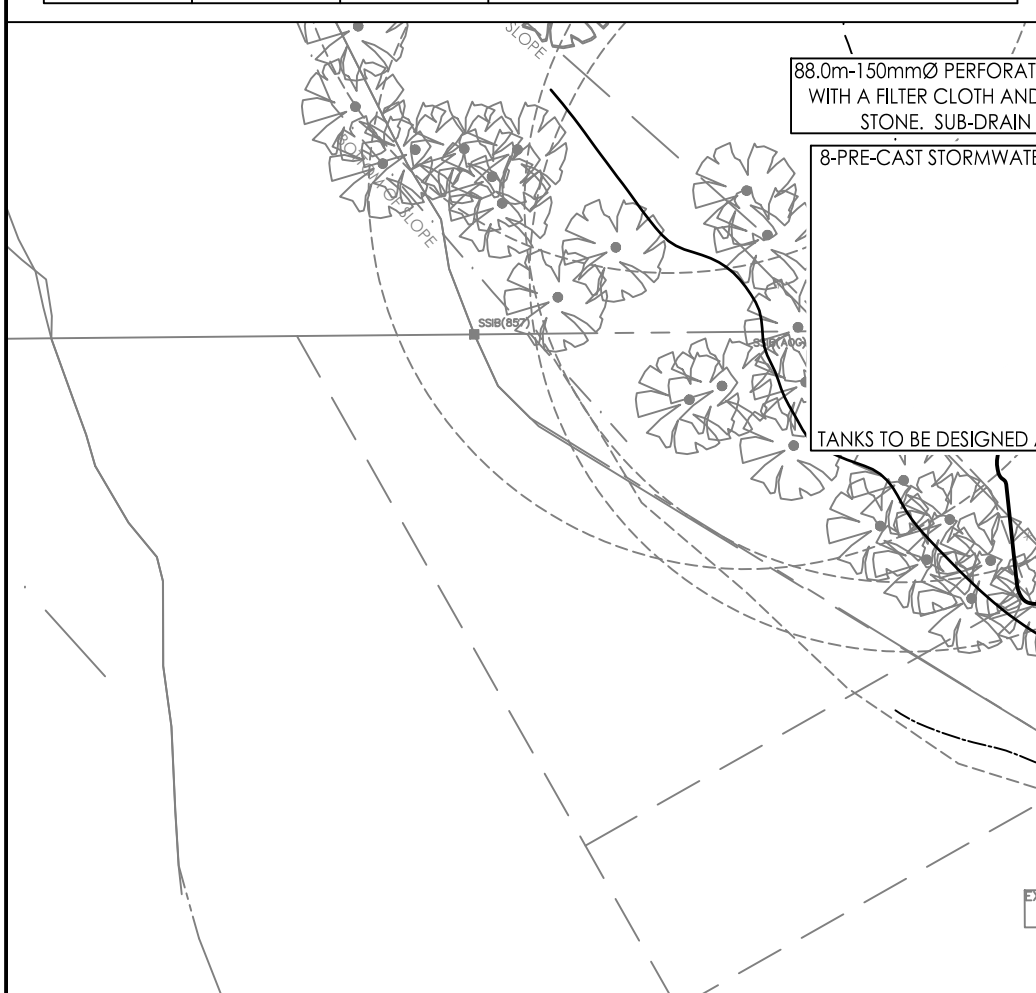
ROOF	DRAIN TYPE	NUMBER OF DRAINS	DEPTH (m)	HEAD (m)	DISCHARGE (L/S)	VOLUME REQUIRED (m³)	VOLUME AVAILABLE (m³)
1 + 2	WATTS ACCUFLOW (50% OPEN)	7	136	0.136	8.21	29.1	38.2
3	WATTS ACCUFLOW (100% OPEN)	4	142	0.142	7.16	37.9	43.9
4	WATTS ACCUFLOW (CLOSED)	5	135	0.135	3.15	10.5	14.1
5	WATTS ACCUFLOW (100% OPEN)	4	142	0.142	7.16	37.9	43.9
6 + 7	WATTS ACCUFLOW (50% OPEN)	7	136	0.136	8.21	29.1	38.2
8	WATTS ACCUFLOW (25% OPEN)	2	117	0.117	1.68	1.9	3.9
9	WATTS ACCUFLOW (25% OPEN)	2	100	0.100	1.58	0.6	2.1
10	WATTS ACCUFLOW (25% OPEN)	21	141	0.141	19.25	94.7	112.4
11	WATTS ACCUFLOW (25% OPEN)	2	120	0.120	1.70	2.2	4.2
12	WATTS ACCUFLOW (25% OPEN)	2	118	0.118	1.69	2.0	4.0



WATERMAIN DETAIL CROSSING UNDER TUNNEL LINK CONNECTION
SCALE 1:100

250mm Ø WATERMAIN DEFLECTION UNDER U/G TUNNEL

STATION	FINISHED GRADE	TOP OF W/M	ITEM
0+000	104.06	101.48c	CONNECT TO EX-250mmØ WATERMAIN WITH 45° VERTICAL BEND
0+002.5	104.06	99.45d	45° VERTICAL BEND
0+007.5	104.06	99.45d	START OF 400mmØ STEEL SLEEVE
0+009.25	104.00	99.45d	END OF 400mmØ STEEL SLEEVE
0+009.5	104.00	99.45d	45° VERTICAL BEND
0+009	103.95	101.55c	CONNECT TO EX-250mmØ WATERMAIN WITH 45° VERTICAL BEND



Phase 2/3 - Unit Count

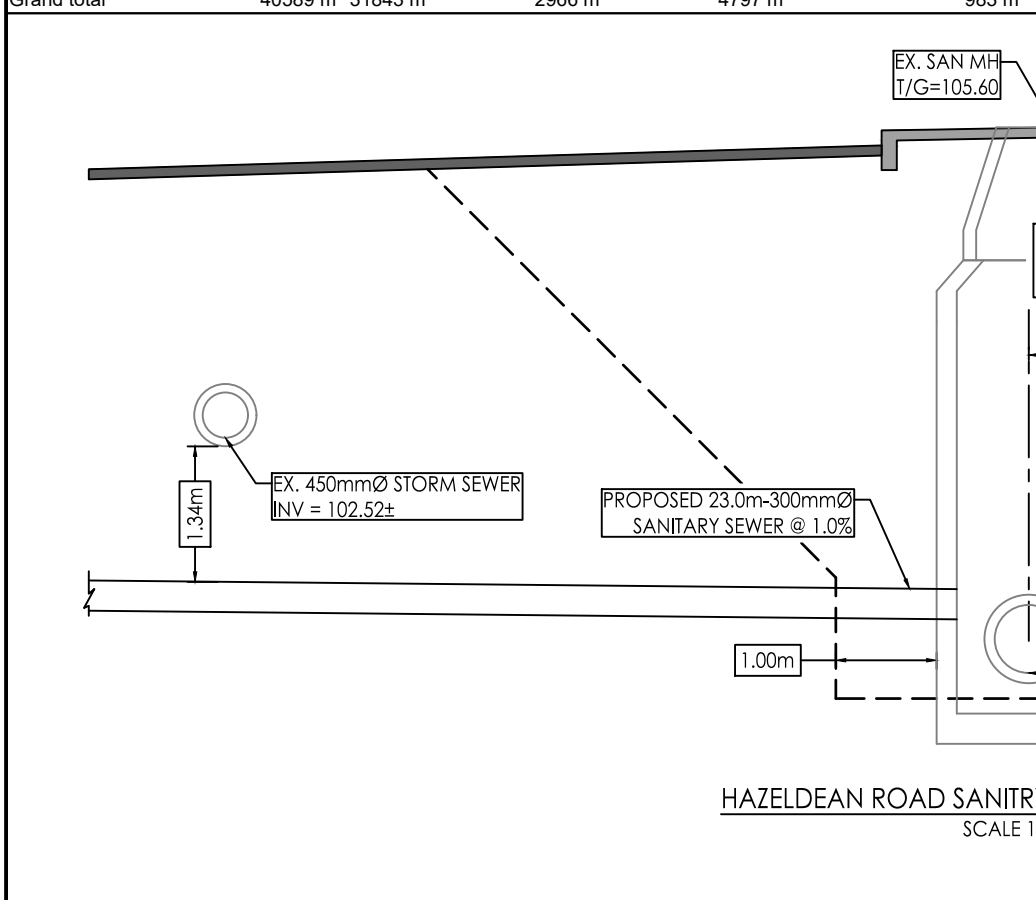
LEVEL	1 BD	1 BD + D	2 BD	2 BD + D	Total
LEVEL 01	22	2	2	2	26
LEVEL 02	41	3	12	2	58
LEVEL 03	41	3	12	2	58
LEVEL 04	43	3	10	2	58
LEVEL 05	48	-	8	2	58
LEVEL 06	12	4	10	0	26
Total:	218	4	54	8	284

Phase 4 - Unit Count

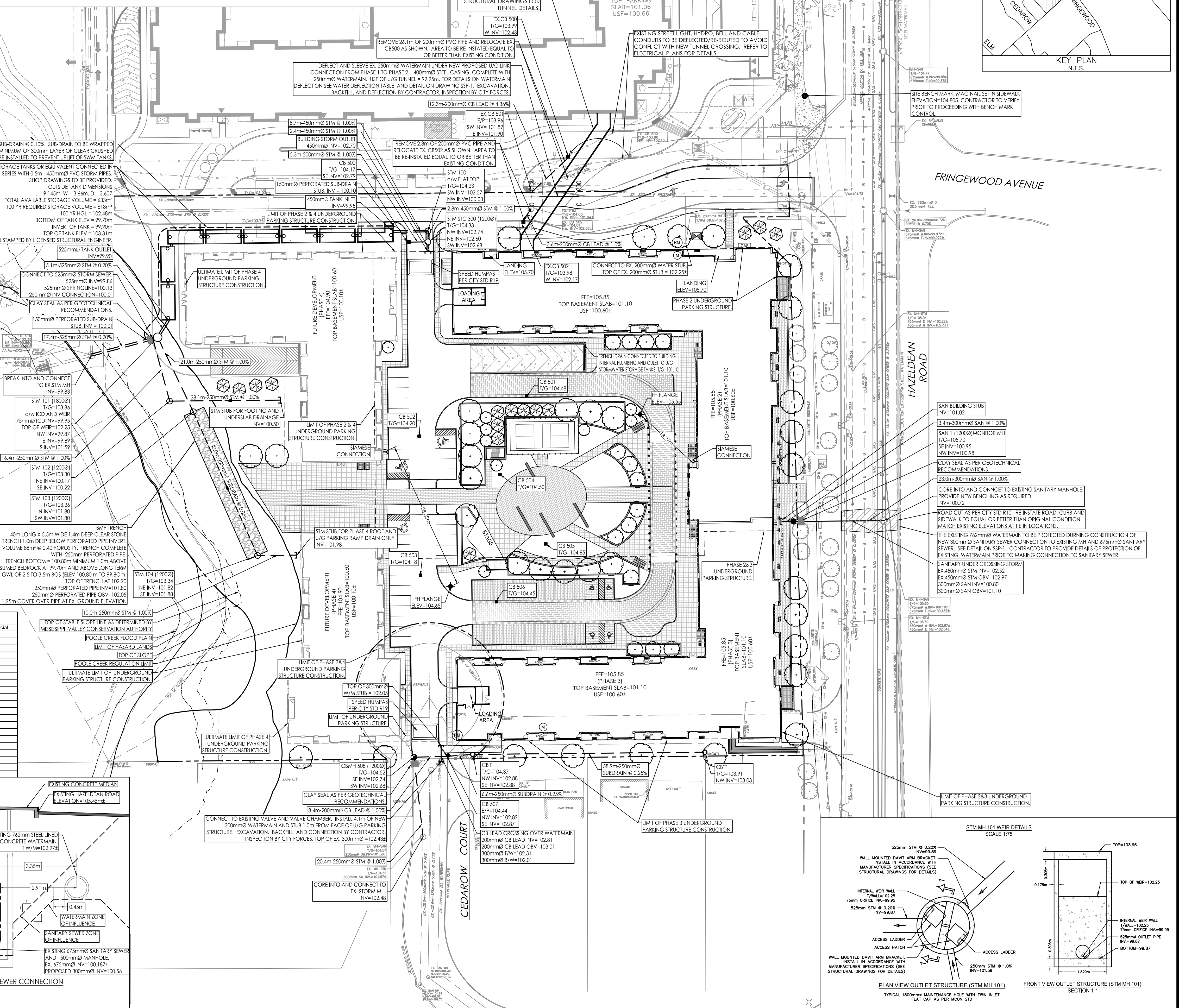
LEVEL	1 BD	1 BD + D	2 BD	Total
LEVEL 01	23	3	4	30
LEVEL 02	17	8	7	32
LEVEL 03	20	8	8	36
LEVEL 04	20	8	8	36
LEVEL 05	20	8	8	36
LEVEL 06	13	6	11	30
Total:	113	41	46	200

CITY OF OTTAWA GROSS FLOOR AREAS & AMENITY AREAS

LEVEL	Area	City GFA	Amenity Area	Communal Amenity Area	Commercial
LEVEL 01	3682 m²	3682 m²	0 m²	0 m²	0 m²
LEVEL 02	290 m²	0 m²	0 m²	0 m²	0 m²
LEVEL 03	3629 m²	0 m²	0 m²	0 m²	0 m²
LEVEL 04	983 m²	0 m²	0 m²	0 m²	983 m²
LEVEL 05	6058 m²	0 m²	0 m²	0 m²	0 m²
LEVEL 06	473 m²	0 m²	0 m²	0 m²	0 m²
LEVEL 07	184 m²	0 m²	194 m²	0 m²	0 m²
LEVEL 08	6207 m²	0 m²	0 m²	0 m²	0 m²
LEVEL 09	496 m²	0 m²	0 m²	0 m²	0 m²
LEVEL 10	165 m²	0 m²	165 m²	0 m²	0 m²
LEVEL 11	5974 m²	0 m²	0 m²	0 m²	0 m²
LEVEL 12	597 m²	0 m²	0 m²	0 m²	0 m²
LEVEL 13	166 m²	0 m²	166 m²	0 m²	0 m²
LEVEL 14	3877 m²	0 m²	0 m²	0 m²	0 m²
LEVEL 15	563 m²	0 m²	0 m²	0 m²	0 m²
LEVEL 16	480 m²	0 m²	480 m²	0 m²	0 m²
Grand total	40589 m²	31843 m²	2966 m²	4797 m²	983 m²



HAZELDEAN ROAD SANITARY SEWER CONNECTION
SCALE 1:50



Client/Project
NAUTICAL LANDS GROUP
2962 Carp Road
WELLINGS OF STITTSVILLE PH 2
20 CEDAROW COURT
OTTAWA, ON

Title
SITE SERVICING PLAN

Project No.
160401511

Drawing No.
SSP-1

Scale
1:500

Sheet
1

Revision
3 of 7