

NOTE: THIS DRAWING IS THE PROPERTY OF THE ARCHITECT AND MAY NOT BE REPRODUCED OR USED WITHOUT THE EXPRESS WRITTEN CONSENT OF THE ARCHITECT. THE CONTRACTOR SHALL CHECK AND REPORT ALL DIMENSIONS AND NOTIFY ANY OMISSIONS OR DISCREPANCIES TO THE ARCHITECT BEFORE PROCEEDING WITH THE WORK.

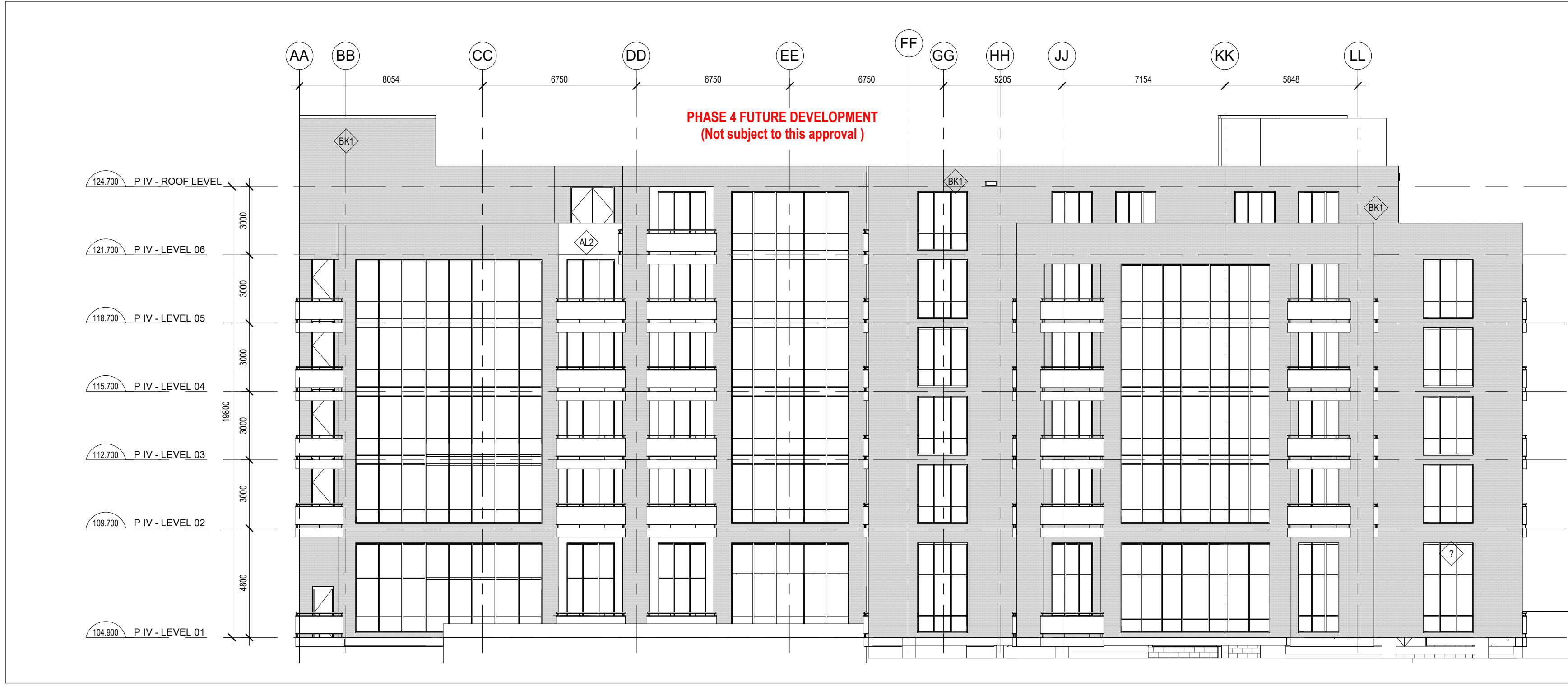
DO NOT SCALE THE DIMENSIONS

Rev	Description	Date
1	Issued for SPA Coordination	21.03.21
2	Issued for SPA Submittal	21.06.01
3	Issued for Information Only	21.09.08
4	Issued for Review to Building Height	21.11.15
5	Issued for Site Plan Approval	22.02.26

TYPE MARK	MATERIAL TYPE	COLOR
AL1	PREFINISHED ALUMINUM PANEL	ROOF DARK GREY
AL2	PREFINISHED ALUMINUM PANEL	LIGHT GREY
BR1	BRICK VENEER	DARK RED/ROSET



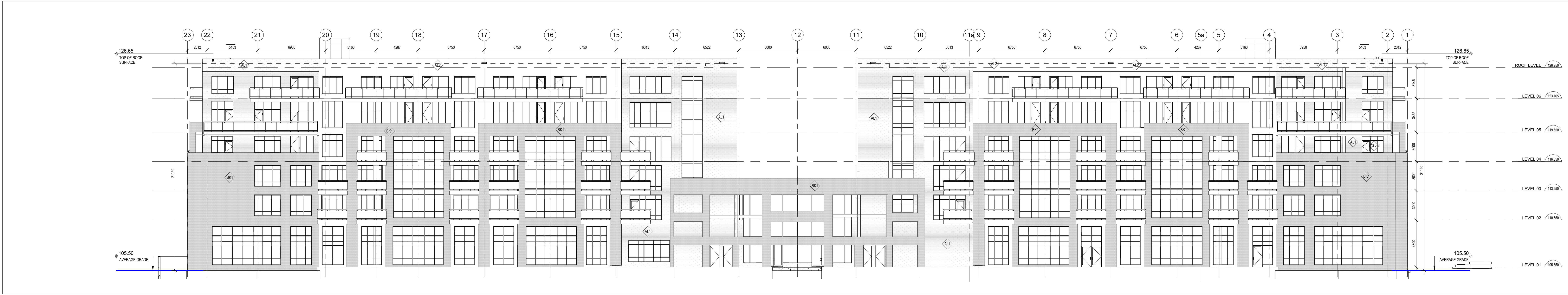
4 PHASE 2/4 - NORTH ELEVATION  
A-201 SCALE: 1:150



3 PHASE 3/4 - SOUTH ELEVATION  
A-201 SCALE: 1:150



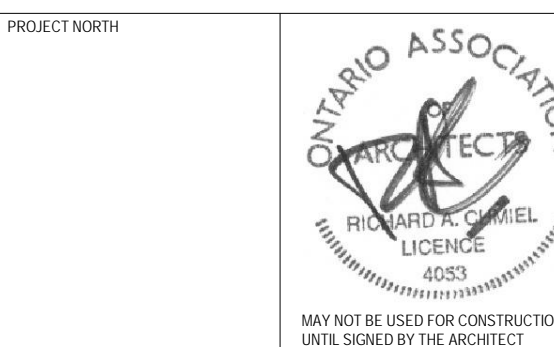
2 PHASE 2/3 - WEST ELEVATION  
A-201 SCALE: 1:150



1 PHASE 2/3 - EAST ELEVATION  
A-201 SCALE: 1:150

**A Hamlin**  
ALLISON HAMLIN  
MANAGER (A), DEVELOPMENT REVIEW WEST  
PLANNING, REAL ESTATE & ECONOMIC DEVELOPMENT  
DEPARTMENT, CITY OF OTTAWA

APPROVED  
By Allison Hamlin at 2:59 pm, Nov 25, 2022



**chmielarchitects**  
200 - 109 Bank Street  
Ottawa, ON K1P 5N5  
T (613) 234-5555  
F (613) 234-6224

**WELLINGS OF STITTVILLE  
PHASE 2-4**

20 CEDARON COURT, STITTVILLE, ON  
PROJECT NO: 19-1784 DRAWN: CG  
SCALE: 1:150 CHECKED: RAC

**BUILDING ELEVATIONS**

DRAWING NO:

**A-201**

PLAN No. 18190