

Copyright Reserved

The Contractor shall verify and be responsible for all dimensions. DO NOT scale the drawing - any errors or omissions shall be reported to Stantec without delay.
The Copyrights to all designs and drawings are the property of Stantec. Reproduction or use for any purpose other than that authorized by Stantec is forbidden.

Legend

- G1A** SANITARY DRAINAGE AREA ID#
- 0.38 INF** INFILTRATION RATES
- SANITARY DRAINAGE AREA ha.
- SANITARY DRAINAGE AREA
- PROPOSED SANITARY SEWER
- EXISTING SANITARY SEWER

SANITARY STATS

POPULATION COUNT - PHASE 2 & 3

12 STUDIO APTS @ 1.4PPU = 17 PEOPLE
166 - 1 BEDROOM APTS @ 1.4PPU = 233 PEOPLE
50 - 2 BEDROOM APTS @ 2.1PPU = 105 PEOPLE
TOTAL POPULATION = 355

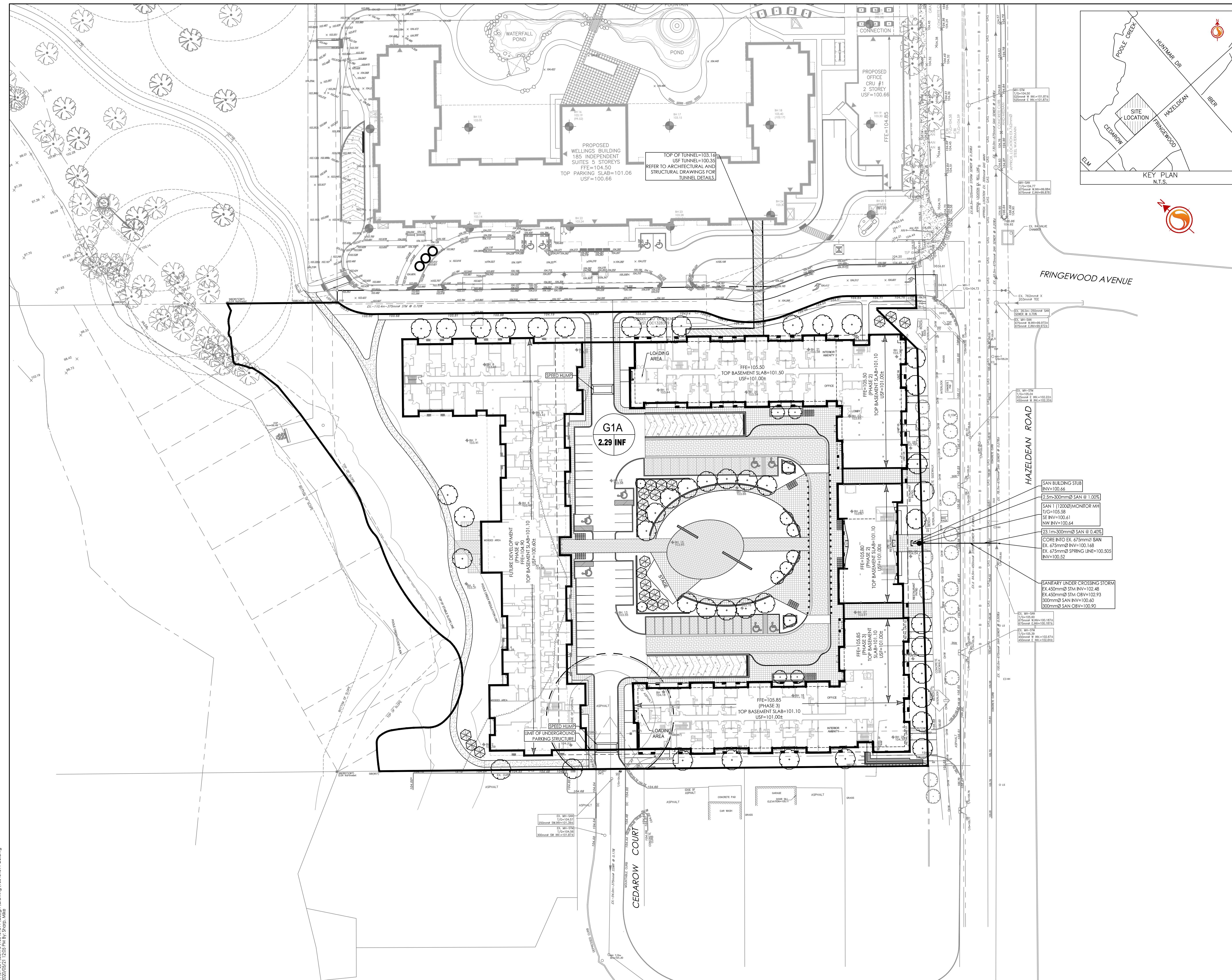
POPULATION COUNT - PHASE 4

29 STUDIO APTS @ 1.4PPU = 41 PEOPLE
141 - 1 BEDROOM APTS @ 1.4PPU = 198 PEOPLE
24 - 2 BEDROOM APTS @ 2.1PPU = 51 PEOPLE
TOTAL POPULATION = 290

COMMERCIAL AREA

RETAIL 1 = 370.75m²
RETAIL 2 = 146.76m²
RETAIL 3 (RESTAURANT) = 512.84m²
RETAIL 4 = 152.33m²
RETAIL 5 = 141.47m²
RETAIL 6 = 222.36m²

TOTAL COMMERCIAL SPACE = 1546.51m² (0.1546ha) @ 28,000 L/ha/day



Revision	By	Appd.	YY.MM.DD
1	MJS	DT	20.05.22
ISSUED TO CITY FOR SPA			

File Name: 160401511-08 MJS DT MJS 19.09.05
Dwn. Chkd. Dgn. YY.MM.DD

Permit-Seal

Client/Project
NAUTICAL LANDS GROUP
2962 Carp Road
WELLINGS OF STITTSVILLE PH 2
20 CEDAROW COURT
OTTAWA, ON

Title
SANITARY DRAINAGE PLAN

Project No. 160401511 Scale 1:500
Drawing No. Sheet 7 of 7 Revision

SA-1 7 of 7 1