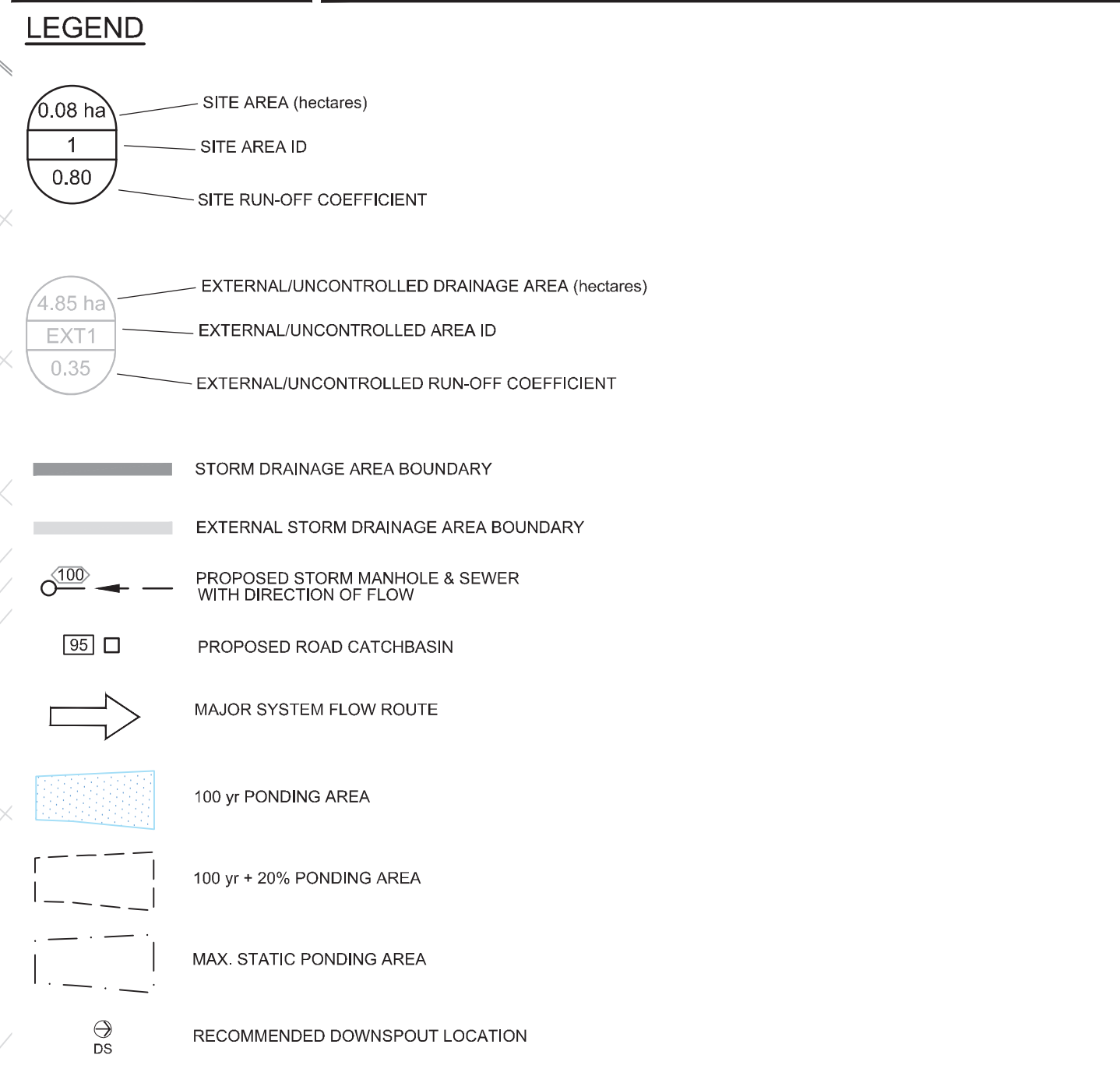
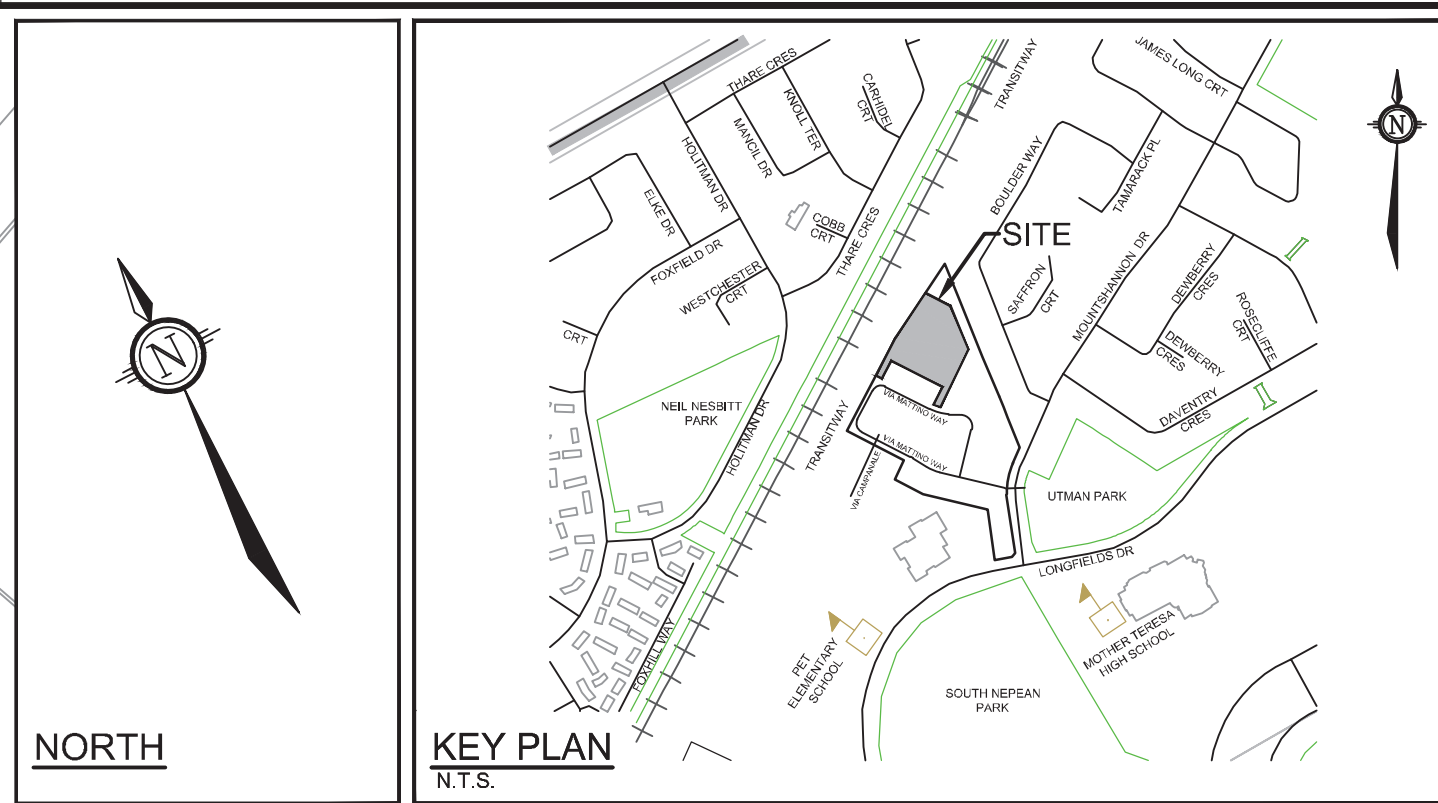
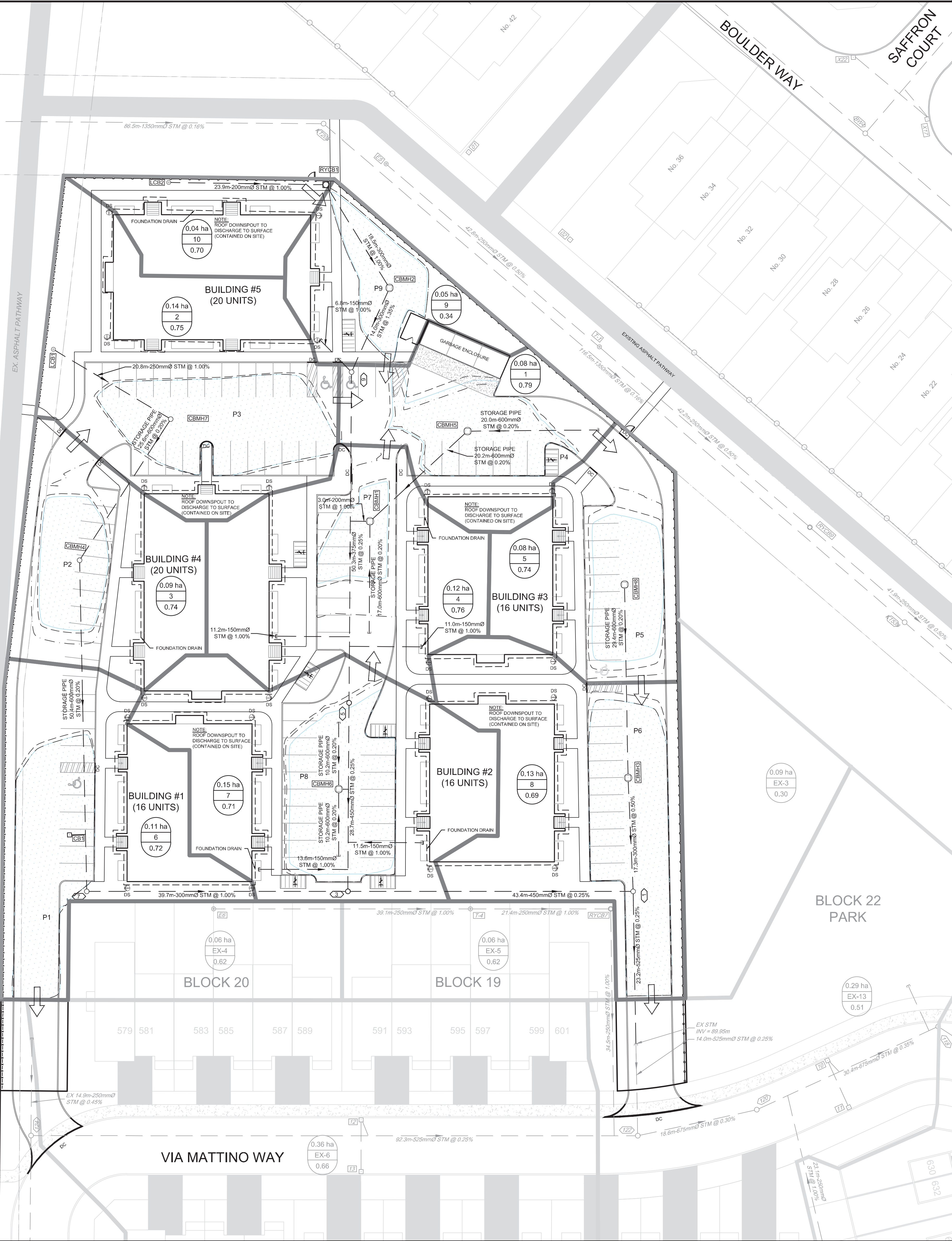


RAILWAY CORRIDOR

TRANSITWAY



PONDING							
PONDING ID	STRUCTURE	100 YEAR PONDING ELEVATION	100 YEAR PONDING DEPTH (m)	100 YEAR +20% PONDING ELEVATION	100 YEAR + 20% PONDING DEPTH (m)	MAX STATIC PONDING ELEVATION	MAX STATIC PONDING DEPTH (m)
P1	CB1	93.20	0.25	93.21	0.26	93.20	0.25
P2	CBM4	93.20	0.25	93.21	0.26	93.25	0.30
P3	CBM7	93.20	0.25	93.21	0.26	93.20	0.25
P4	CBM5	93.08	0.23	93.09	0.24	93.07	0.22
P5	CBM8	92.85	0.25	92.88	0.28	92.92	0.32
P6	CBM13	92.85	0.25	92.88	0.28	92.85	0.25
P7	CBM11	93.08	0.13	93.09	0.14	93.17	0.22
P8	CBM6	93.23	0.28	93.26	0.31	93.25	0.30
P9	CBM12	93.20	0.25	93.22	0.27	93.22	0.27

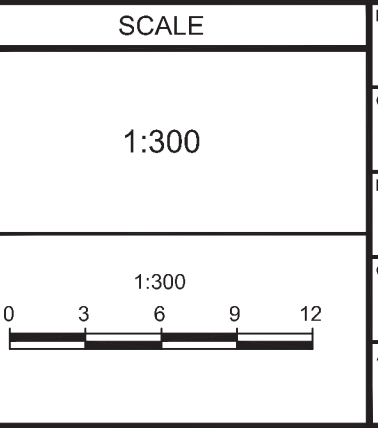
APPROVED
By Lily Xu at 2:46 pm, Jun 22, 2023

Lily Xu
LILY XU, MCIP, RPP
MANAGER, DEVELOPMENT REVIEW SOUTH
PLANNING, INFRASTRUCTURE & ECONOMIC
DEVELOPMENT DEPARTMENT, CITY OF OTTAWA

NOTE:
THE POSITION OF ALL POLE LINES, CONDUITS,
WATERMANS, SEWERS AND OTHER
UNDERGROUND AND OVERGROUND UTILITIES AND
STRUCTURES IS NOT NECESSARILY SHOWN ON
THE CONTRACT DRAWINGS, AND WHERE SHOWN,
THE ACCURACY OF THE POSITION OF SUCH
UTILITIES AND STRUCTURES IS NOT GUARANTEED.
BEFORE STARTING WORK, DETERMINE THE EXACT
LOCATION OF ALL SUCH UTILITIES AND
STRUCTURES AND ASSUME ALL LIABILITY FOR
DAMAGE TO THEM.



No.	REVISION	DATE	BY
6.	REVISED PER CITY COMMENTS	DEC 21/22	MAB
5.	CITY SUBMISSION	OCT 5/22	MAB
4.	CITY SUBMISSION	AUG 5/22	MAB
3.	CITY SUBMISSION	JUL 2/20	MAB
2.	REVISED PER CITY COMMENTS	MAR 4/20	MAB
1.	ISSUED FOR APPROVAL	NOV 1/19	MAB



FOR REVIEW ONLY

DESIGN: LRW
CHECKED: MAB
DRAWN: DTD
CHECKED: MAB
APPROVED: JGR

PROFESSIONAL ENGINEER
L. R. WILSON
10180555
PROVINCE OF ONTARIO

PROFESSIONAL ENGINEER
M.A. BISSETT
2022.12.21
PROVINCE OF ONTARIO



CITY OF OTTAWA
LONGFIELDS CENTRAL - BLOCK 21
605 VIA MATTINO WAY

POST-DEVELOPMENT
STORM DRAINAGE AREA PLAN

PROJECT No.: 112021-10
REV: REV # 6
DRAWING No.: 112021-10-STM
#18092