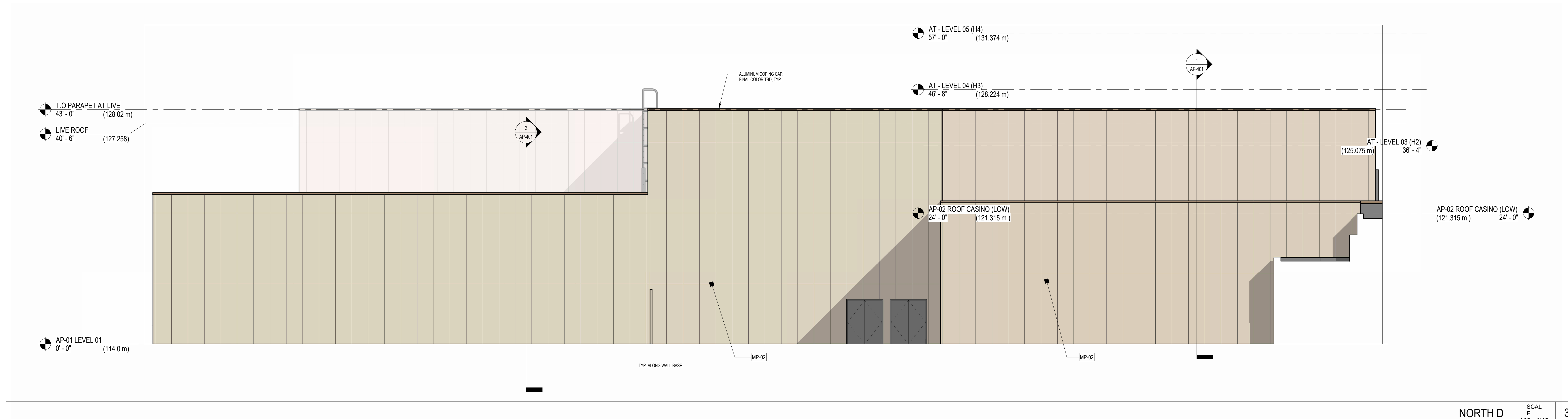
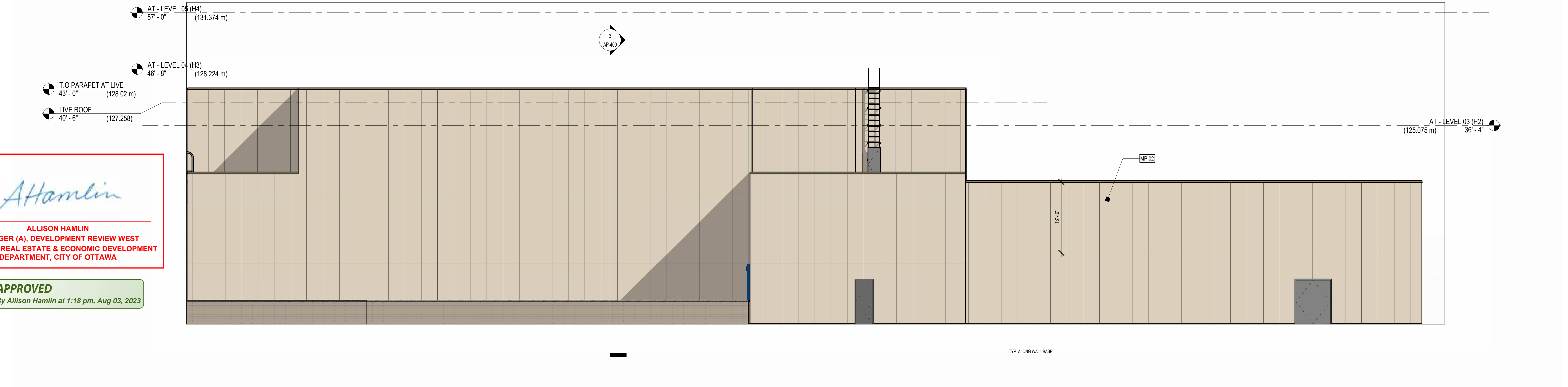


SUBMISSIONS		
NO.	DATE	DESCRIPTION
9	July 25th 2023	REVISED PER CITY COMMENTS
8	July 14th 2023	ISSUED FOR PERMIT
7	June 20th 2023	REVISED PER CITY COMMENTS
6	June 14th 2023	ISSUED FOR CMP
5	March 3rd 2023	REVISED PER CITY COMMENTS
4	November 15th 2022	DESIGN DOCUMENTS PACKAGE
3	November 8th 2022	REVISED PER CITY COMMENTS
2	April 24th 2020	REVISED PER CITY COMMENTS
1	November 20th 2019	ISSUED FOR SITE PLAN APPROVAL

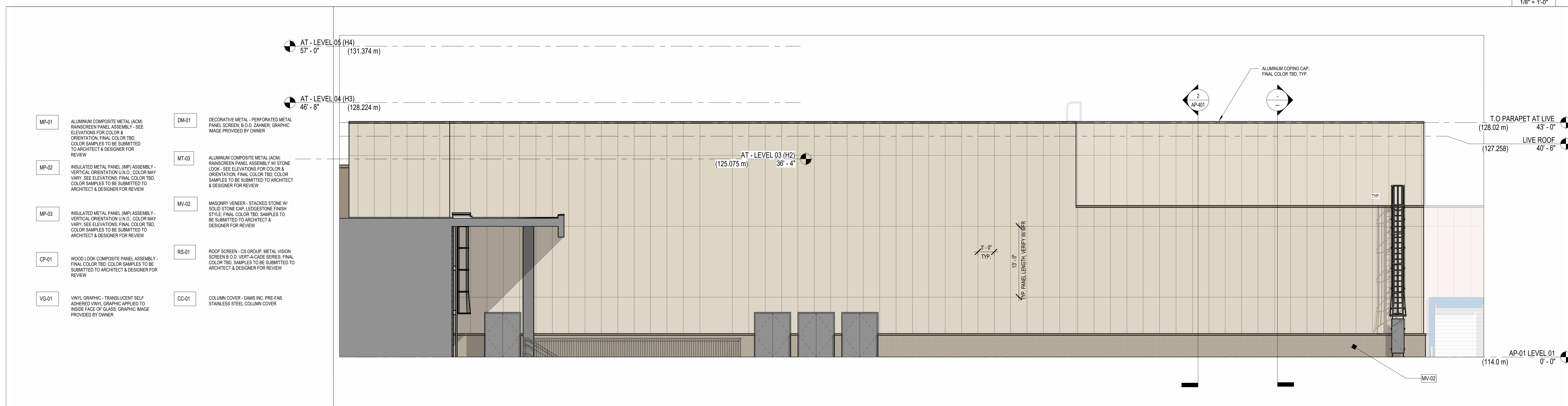
DRAWING TITLE: Elevations 4	
DRAWN BY: MS	DATE: July 25th 2023
REVIEWED BY: RY	DRAWING NO. SP-004-4
SCALE:	PROJECT NO. 22-001



NORTH D SCAL E 1/8" = 1'-0" 3



EAST D-1 SCAL E 1/8" = 1'-0" 2



SOUTH D-2 SCAL E 1/8" = 1'-0" 1

Allison Hamlin

ALLISON HAMLIN
MANAGER (A), DEVELOPMENT REVIEW WEST
PLANNING, REAL ESTATE & ECONOMIC DEVELOPMENT
DEPARTMENT, CITY OF OTTAWA

APPROVED
By Allison Hamlin at 1:18 pm, Aug 03, 2023

EXTERIOR MATERIALS LEGEND SCAL E 1/4" = 1'-0"

- MP-01 ALUMINUM COMPOSITE METAL (ACM) RAINSCREEN PANEL ASSEMBLY - SEE ELEVATIONS FOR COLOR & ORIENTATION. FINAL COLOR TBD. COLOR SAMPLES TO BE SUBMITTED TO ARCHITECT & DESIGNER FOR REVIEW
- MP-02 INSULATED METAL PANEL (IMP) ASSEMBLY - VERTICAL ORIENTATION U.N.O. COLOR MAY VARY. SEE ELEVATIONS. FINAL COLOR TBD. COLOR SAMPLES TO BE SUBMITTED TO ARCHITECT & DESIGNER FOR REVIEW
- MP-03 INSULATED METAL PANEL (IMP) ASSEMBLY - VERTICAL ORIENTATION U.N.O. COLOR MAY VARY. SEE ELEVATIONS. FINAL COLOR TBD. COLOR SAMPLES TO BE SUBMITTED TO ARCHITECT & DESIGNER FOR REVIEW
- CP-01 WOOD LOOK COMPOSITE PANEL ASSEMBLY - FINAL COLOR TBD. COLOR SAMPLES TO BE SUBMITTED TO ARCHITECT & DESIGNER FOR REVIEW
- VG-01 VINYL GRAPHIC - TRANSLUCENT SELF ADHERED VINYL GRAPHIC APPLIED TO INSIDE FACE OF GLASS. GRAPHIC IMAGE PROVIDED BY OWNER
- DM-01 DECORATIVE METAL - PERFORATED METAL RAINSCREEN PANEL ASSEMBLY - SEE ELEVATIONS FOR COLOR & ORIENTATION. FINAL COLOR TBD. COLOR SAMPLES TO BE SUBMITTED TO ARCHITECT & DESIGNER FOR REVIEW
- MT-03 ALUMINUM COMPOSITE METAL (ACM) RAINSCREEN PANEL ASSEMBLY W/ STONE LOOK - SEE ELEVATIONS FOR COLOR & ORIENTATION. FINAL COLOR TBD. COLOR SAMPLES TO BE SUBMITTED TO ARCHITECT & DESIGNER FOR REVIEW
- MV-02 MASONRY VENEER - STACKED STONE W/ SOLID STONE CAP. LEDGESTONE FINISH STYLE. FINAL COLOR TBD. SAMPLES TO BE SUBMITTED TO ARCHITECT & DESIGNER FOR REVIEW
- RS-01 ROOF SCREEN - CS GROUP METAL VISION SCREEN B O.D. VERT-A-CASE SERIES. FINAL COLOR TBD. SAMPLES TO BE SUBMITTED TO ARCHITECT & DESIGNER FOR REVIEW
- CC-01 COLUMN COVER - DAMS INC. PRE-FAB STAINLESS STEEL COLUMN COVER