

At Hamlin

ALLISON HAMLIN  
MANAGER (A), DEVELOPMENT REVIEW WEST  
PLANNING, REAL ESTATE & ECONOMIC DEVELOPMENT  
DEPARTMENT, CITY OF OTTAWA

APPROVED  
By Allison Hamlin at 1:17 pm, Aug 03, 2023



1600 Carling Ave, Ottawa, ON K1Y 1B2  
+1 800-397-2458



60 Ryeburn Dr, Gloucester, ON K1V 1H5  
+1 613-884-4785



2540 Sheffield Rd, Ottawa, ON K1B 3V6  
+1 613-749-8191



Hard Rock Ottawa Hotel &  
Casino SP Agreement

4837 ALBION RD,  
GLOUCESTER, OTTAWA  
ONTARIO, CANADA

REVISED PER CITY COMMENTS

SUBMISSIONS

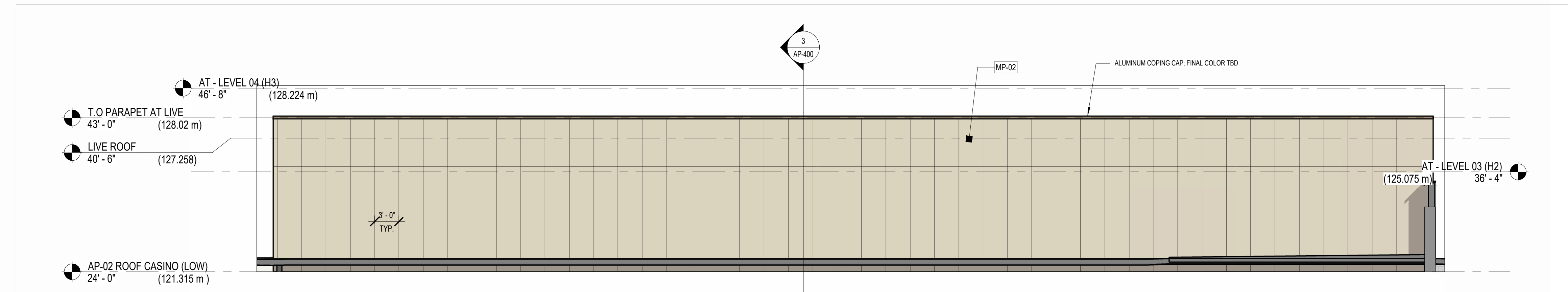
NO.	DATE	DESCRIPTION
9	July 25th 2023	REVISED PER CITY COMMENTS
8	July 14th 2023	ISSUED FOR PERMIT
7	June 20th 2023	REVISED PER CITY COMMENTS
6	June 14th 2023	ISSUED FOR CMP
5	March 3rd 2023	REVISED PER CITY COMMENTS
4	November 15th 2022	DESIGN DOCUMENTS PACKAGE
3	November 8th 2022	REVISED PER CITY COMMENTS
2	April 24th 2020	REVISED PER CITY COMMENTS
1	November 20th 2019	ISSUED FOR SITE PLAN APPROVAL

DRAWING TITLE:  
Elevations 6

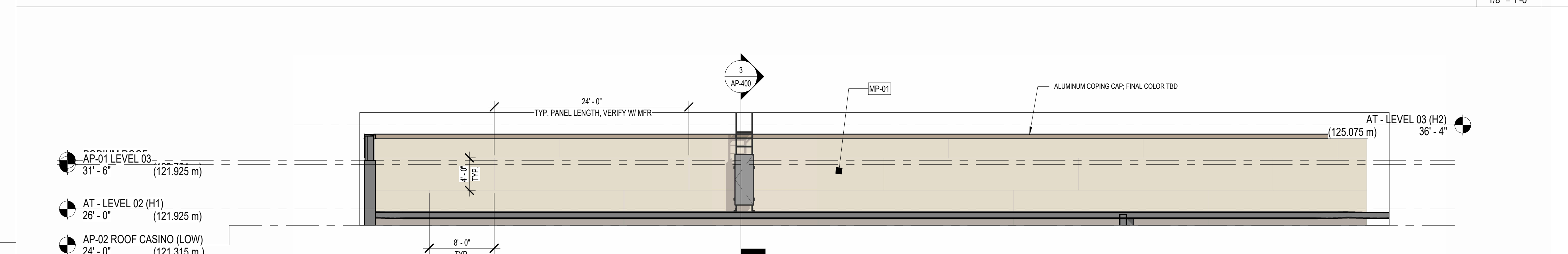
DRAWN BY: MS DATE: July 25th 2023  
REVIEWED BY: RY

SCALE: DRAWING NO.

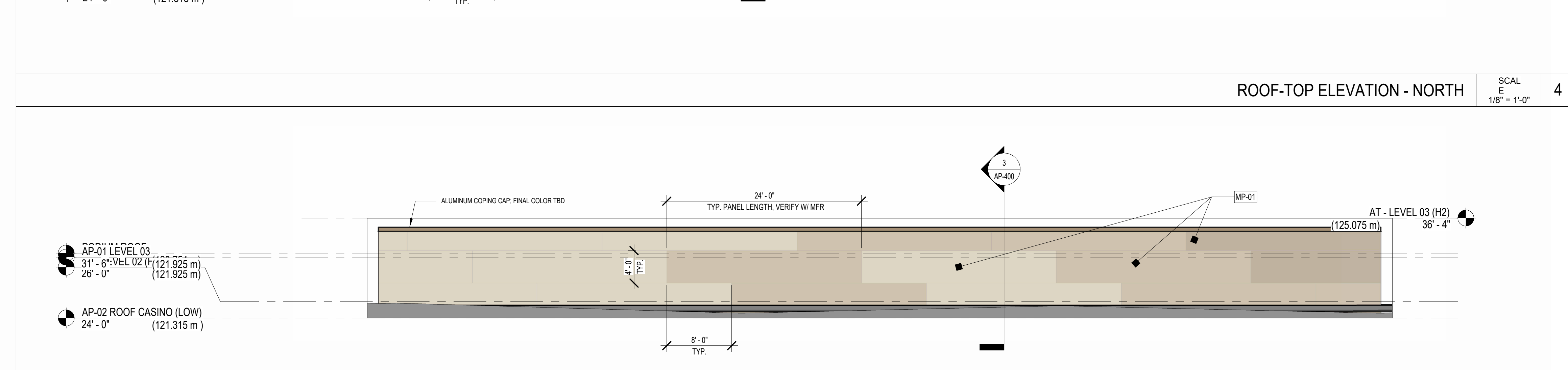
PROJECT NO. 22-001 SP-004-6



ROOF-TOP ELEVATION - LIVE SOUTH SCAL E 1/8" = 1'-0" 5

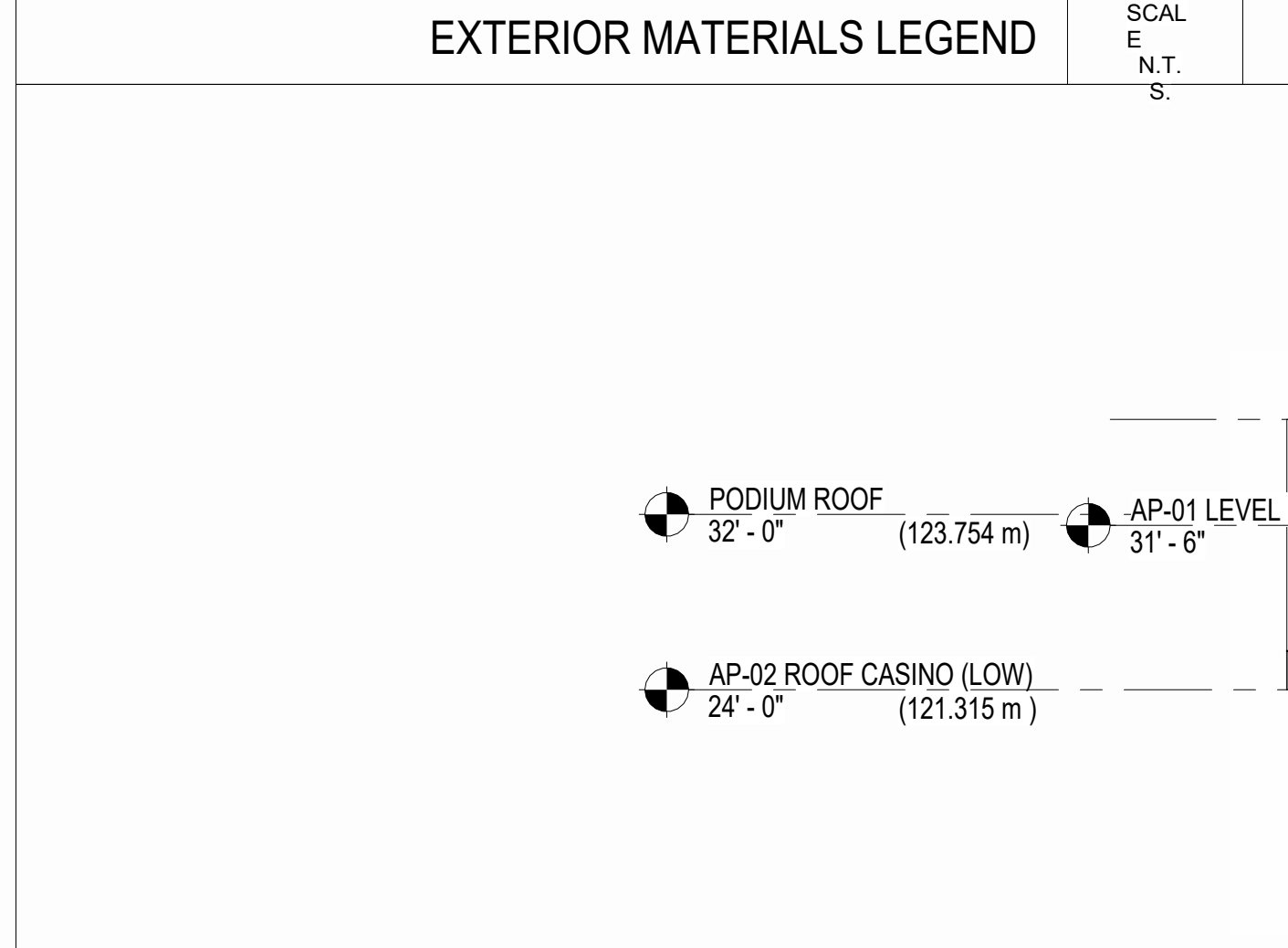


ROOF-TOP ELEVATION - NORTH SCAL E 1/8" = 1'-0" 4

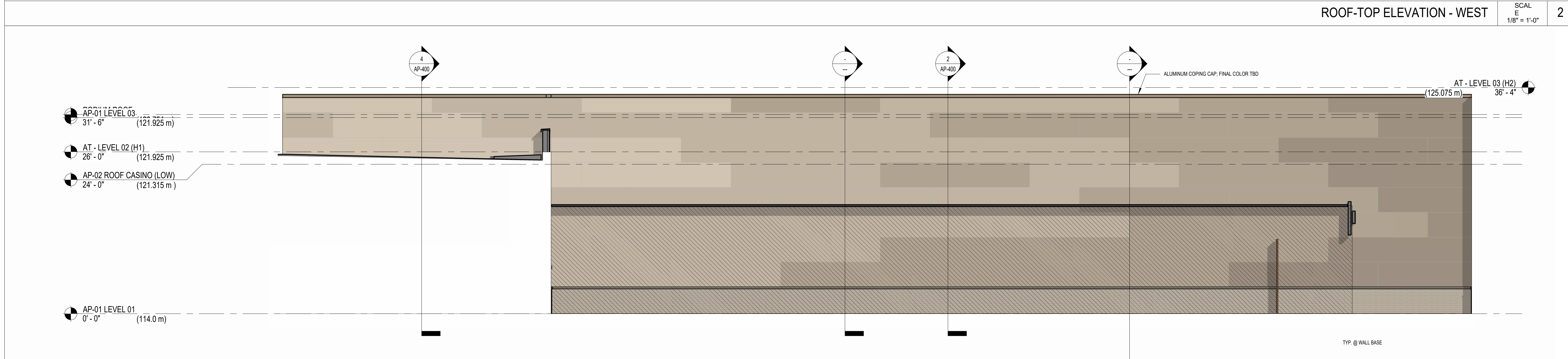


ROOF-TOP ELEVATION - SOUTH SCAL E 1/8" = 1'-0" 3

EXTERIOR MATERIALS LEGEND		SCAL E N.T.S.
MP-01	ALUMINUM COMPOSITE METAL (ACM) RAINSCREEN PANEL ASSEMBLY - SEE ELEVATIONS FOR COLOR & ORIENTATION. FINAL COLOR TBD. COLOR SAMPLES TO BE SUBMITTED TO ARCHITECT & DESIGNER FOR REVIEW	
MP-02	INSULATED METAL PANEL (IMP) ASSEMBLY - VERTICAL ORIENTATION U.N.O. COLOR MAY VARY. SEE ELEVATIONS. FINAL COLOR TBD. COLOR SAMPLES TO BE SUBMITTED TO ARCHITECT & DESIGNER FOR REVIEW	
MP-03	INSULATED METAL PANEL (IMP) ASSEMBLY - VERTICAL ORIENTATION U.N.O. COLOR MAY VARY. SEE ELEVATIONS. FINAL COLOR TBD. COLOR SAMPLES TO BE SUBMITTED TO ARCHITECT & DESIGNER FOR REVIEW	
CR-01	WOOD LOOK COMPOSITE PANEL ASSEMBLY - FINAL COLOR TBD. COLOR SAMPLES TO BE SUBMITTED TO ARCHITECT & DESIGNER FOR REVIEW	
VG-01	VINYL GRAPHIC - TRANSLUCENT SELF ADHERED VINYL GRAPHIC APPLIED TO INSIDE FACE OF GLASS. GRAPHIC IMAGE PROVIDED BY OWNER	
DM-01	DECORATIVE METAL - PERFORATED METAL PANEL SCREEN 8" O.D. DRAWER. GRAPHIC IMAGE PROVIDED BY OWNER	
MT-03	ALUMINUM COMPOSITE METAL (ACM) RAINSCREEN PANEL ASSEMBLY W/ STONE LOOK - SEE ELEVATIONS FOR COLOR & ORIENTATION. FINAL COLOR TBD. COLOR SAMPLES TO BE SUBMITTED TO ARCHITECT & DESIGNER FOR REVIEW	
MV-02	MASONRY VENEER - STACKED STONE W/ SOLID STONE CAP. LEDGESTONE FINISH STYLE. FINAL COLOR TBD. SAMPLES TO BE SUBMITTED TO ARCHITECT & DESIGNER FOR REVIEW	
RS-01	ROOF SCREEN - CS GROUP. METAL VISION SCREEN 8" O.D. VERT-A-CADE SERIES. FINAL COLOR TBD. SAMPLES TO BE SUBMITTED TO ARCHITECT & DESIGNER FOR REVIEW	
CC-01	COLUMN COVER - DAMS INC. PRE-FAB. STAINLESS STEEL COLUMN COVER	



ROOF-TOP ELEVATION - WEST SCAL E 1/8" = 1'-0" 2



ROOF-TOP ELEVATION - EAST SCAL E 1/8" = 1'-0" 1