

REFER TO THE TREE PROTECTION NOTES, FOUND ON THE PLANS AND/OR REPORT.

A TEMPORARY FENCE SHALL BE ERECTED TO PROTECT THE CRITICAL ROOT ZONE (CRZ). THE CRZ IS ESTABLISHED AS DBH x 10cm. SEE PLAN FOR LOCATION.

PRUNE BRANCHES TO REMOVE DAMAGED OR OBJECTIONABLE BRANCHES. DO NOT PRUNE LEADERS. DO NOT PRUNE MORE THAN 1/4 OF CROWN.

TREE PROTECTION TO REMAIN UNTIL THE SOODING/SEEDING PHASE OF THE PROJECT IS STARTED. REMOVE FENCE AT THIS TIME.

IF TREES ARE BEING AFFECTED BY CONSTRUCTION, A WATER AND FERTILIZING PROGRAM WILL NEED TO BE SET UP TO THE SATISFACTION OF THE LANDSCAPE ARCHITECT.

ATTACH FENCE WITH 3P TIES USE 24 WOOD TOP RAIL TO SUPPORT LONG LENGTHS, AS REQUIRED.

STEEL T BAR WITH PREDRILLED HOLES

ORANGE SNOW FENCE OR STANDARD PAGE WIRE FARM FENCE, 1200mm HT.

UNDISTURBED SOIL.

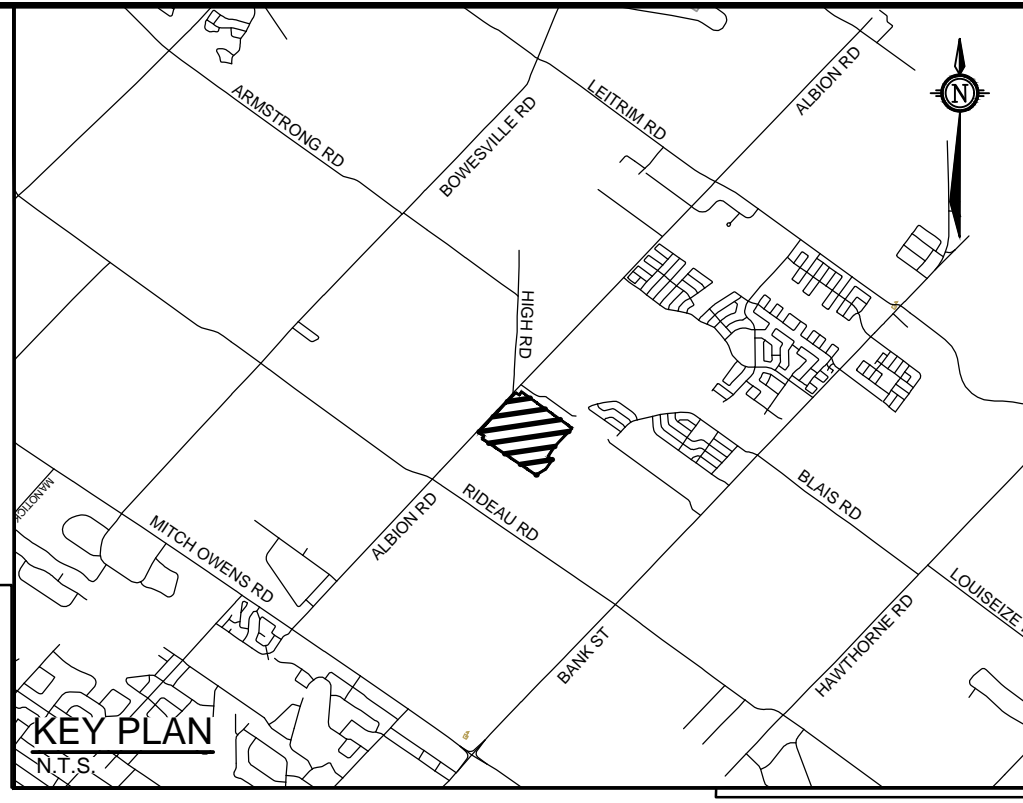
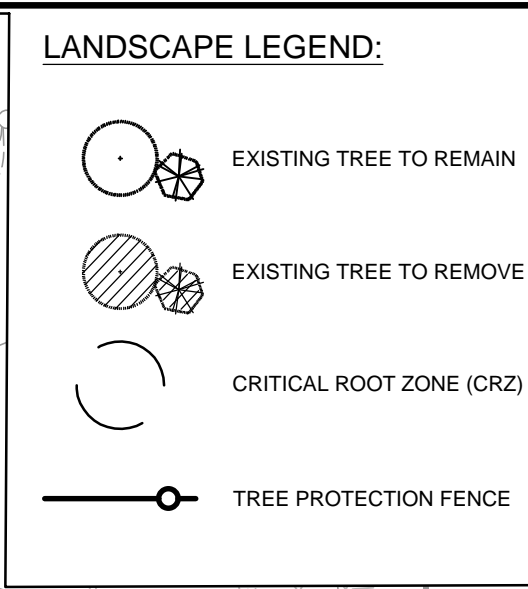
TREE PROTECTION FENCE

D1

TREE PROTECTION NOTES

- The following protection measures must be implemented for retained trees, both on site and on adjacent sites, prior to any tree removal or site works and maintained for the duration of construction on site:
- Under the guidance of a Landscape Architect or Certified Arborist, erect a fence at the critical root zone (CRZ) of trees where the CRZ is established as being 10 centimetres from the trunk of a tree for every centimetre of trunk diameter at breast height. The CRZ is calculated as DBH x 10cm. Refer to the Tree Protection Fence detail. See plan for fence location.
 - When trees to be removed overlap with the CRZ of trees to be preserved: cut roots at the edge of the CRZ and grind down stumps after tree removals, do not pull out stumps. Ensure there is no root pulling or disturbance of the ground within the CRZ.
 - If roots must be cut, roots 20mm or larger should be cut at right angles with clean, sharp horticultural tools without tearing, crushing, or pulling. Refer to City of Ottawa Specification S.P. F-4011 Tree Protection, Excavation of Root Zone.
 - Hand work only where required within the CRZ; absolutely no machinery permitted.
 - Do not place any material or equipment within the CRZ of any tree.
 - Do not attach any signs, notices or posters to any tree.
 - Do not disturb, raise or lower the existing grade within the CRZ without approval.
 - Only tunnel or bore when digging within the CRZ of a tree.
 - Do not damage the root system, trunk, or branches of any tree.
 - Ensure that exhaust fumes from all equipment are directed away from any tree canopy.

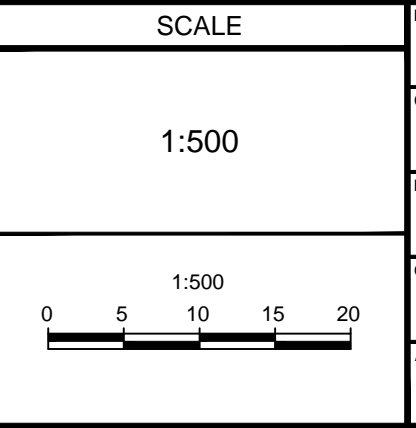
No.	Botanical Name	Common Name	DBH (m)	CRZ (m)	Condition	Remarks	Recomm.
1	Acer platanoides	Norway Maple	0.20	2.00	P	Dead leader, black spot, open seam on trunk	Remove
2	Acer platanoides	Norway Maple	0.22	2.20	F	Black spot	Remove
3	Acer platanoides	Norway Maple	0.20	2.00	P	Dead limbs at top, black spot	Remove
4	Acer platanoides	Norway Maple	0.22	2.20	F	Dead limbs at top, black spot	Remove
5	Acer platanoides	Norway Maple	0.18	1.80	F	Dead limbs at top, black spot	Remove
6	Acer platanoides	Norway Maple	0.10	1.00	P	1/2 canopy dead, black spot, suckers	Remove
7	Acer platanoides	Norway Maple	0.24	2.40	G		Remove
8	Prunus x cistena	Purple Leaf Sand Cherry	0.07	0.70	G	Memorial plaque	Remove
9	Sorbus aucuparia	Mountain Ash	0.05	0.50	G	Memorial plaque, dead limbs at top	Protect
10	Amelanchier sp.	Serviceberry	0.02	0.20	G	Memorial plaque, stakes and guys - recent planting	Protect
11	Malus sp.	Crabapple	0.05	0.50	G	Memorial plaque	Remove
12	Amelanchier sp.	Serviceberry	0.02	0.20	G	Memorial plaque, stakes and guys - recent planting	Remove
13	Acer platanoides	Norway Maple	0.15	1.50	F		Remove
14	Malus sp.	Crabapple	0.14	1.40	G		Protect
15	Malus sp.	Crabapple	0.12	1.20	G		Protect
16	Malus sp.	Crabapple	0.16	1.60	G		Protect
17	Acer platanoides	Norway Maple	0.20	2.00	G		Remove
18	Acer platanoides	Norway Maple	0.17	1.70	P	Dead top, 1/2 canopy, seam on trunk	Remove
19	Acer platanoides	Norway Maple	0.16	1.60	F	Defoliated early	Remove
20	Acer platanoides	Norway Maple	0.21	2.10	G		Remove
21	Acer platanoides	Norway Maple	0.14	1.40	G		Remove
22	Acer platanoides	Norway Maple	0.17	1.70	P	Dead limbs at top	Remove
23	Acer platanoides	Norway Maple	0.20	2.00	G		Remove
24	Acer platanoides	Norway Maple	0.16	1.60	G		Remove
25	Acer platanoides	Norway Maple	0.16	1.60	P	Defoliated early, dead limbs at top	Remove
26	Acer platanoides	Norway Maple	0.17	1.70	F		Remove
27	Acer platanoides	Norway Maple	0.19	1.90	G		Remove
28	Acer platanoides	Norway Maple	0.19	1.90	G		Remove
29	Acer platanoides	Norway Maple	0.16	1.60	G		Remove
30	Acer platanoides	Norway Maple	0.15	1.50	F	Defoliated early	Remove
31	Acer platanoides	Norway Maple	0.15	1.50	G		Remove
32	Acer platanoides	Norway Maple	0.15	1.50	F	Defoliated early	Remove
33	Acer platanoides	Norway Maple	0.08	0.80	G		Remove
34	Acer platanoides	Norway Maple	0.22	2.20	G		Remove
35	Malus sp.	Crabapple	0.08	0.80	G		Remove
36	Malus sp.	Crabapple	0.08	0.80	G		Remove
37	Malus sp.	Crabapple	0.13	1.30	G	Columnar form	Remove
38	Pinus strobus	White Pine	0.11	1.10	G	Columnar form	Remove
39	Acer platanoides	Norway Maple	0.20	2.00	G		Remove
40	Acer platanoides	Norway Maple	0.16	1.60	F	Defoliated early	Remove
41	Acer platanoides	Norway Maple	0.16	1.60	F	Defoliated early	Remove
42	Acer platanoides	Norway Maple	0.16	1.60	F	Defoliated early	Remove
43	Acer platanoides	Norway Maple	0.16	1.60	G		Remove
44	Acer platanoides	Norway Maple	0.18	1.80	F	Defoliated early	Remove
45	Acer platanoides	Norway Maple	0.18	1.80	G	Defoliated early	Remove
46	Acer platanoides	Norway Maple	0.18	1.80	G	Dead top, defoliated early	Remove
47	Acer platanoides	Norway Maple	0.18	1.80	G		Remove
48	Acer platanoides	Norway Maple	0.18	1.80	F	Defoliated early	Remove
49	Acer platanoides	Norway Maple	0.18	1.80	F	Major seam in trunk	Remove
50	Acer platanoides	Norway Maple	0.18	1.80	P	Dead limbs at top	Remove
51	Acer platanoides	Norway Maple	0.16	1.60	G		Remove
52	Acer platanoides	Norway Maple	0.20	2.00	F		Remove
53	Acer platanoides	Norway Maple	0.17	1.70	F		Remove
54	Acer platanoides	Norway Maple	0.21	2.10	G		Remove
55	Acer platanoides	Norway Maple	0.21	2.10	G		Remove
56	Acer platanoides	Norway Maple	0.15	1.50	G		Remove
57	Acer platanoides	Norway Maple	0.12	1.20	F	Some bark loose on trunk	Remove
58	Acer platanoides	Norway Maple	0.14	1.40	F	Bark loose on trunk	Remove
59	Acer platanoides	Norway Maple	0.13	1.30	F		Remove
60	Acer platanoides	Norway Maple	0.13	1.30	F		Remove
61	Acer platanoides	Norway Maple	0.15	1.50	G	Major seam in trunk	Remove
62	Acer platanoides	Norway Maple	0.25	2.50	G		Remove



NOTE: THE POSITION OF ALL POLE LINES, CONDUITS, WATERMANS, SEWERS AND OTHER UNDERGROUND AND OVERGROUND UTILITIES AND STRUCTURES IS NOT NECESSARILY SHOWN ON THE CONTRACT DRAWINGS, AND WHERE SHOWN, THE ACCURACY OF THE POSITION OF SUCH UTILITIES AND STRUCTURES IS NOT GUARANTEED. BEFORE STARTING WORK, DETERMINE THE EXACT LOCATION OF ALL SUCH UTILITIES AND STRUCTURES AND ASSUME ALL LIABILITY FOR DAMAGE TO THEM.

NOT FOR CONSTRUCTION

No.	REVISION	DATE	BY



NO.	ISSUED FOR	DATE	BY
4	ISSUED FOR SITE PLAN APPLICATION	APR 24/20	RGJ
3	ISSUED FOR COORDINATION	MAR 23/20	RGJ
2	ISSUED FOR SITE PLAN APPLICATION	NOV 18/19	RGJ
1	ISSUED FOR COORDINATION	NOV 5/19	RGJ

FOR REVIEW ONLY

KEW/RGJ

RGJ

KEW

RGJ

RGJ

RGJ

RGJ

LOCATION
4837 ALBION ROAD, CITY OF OTTAWA
RIDEAU CARLETON RACEWAY AND SLOTS EXPANSION

DRAWING NAME
**TREE CONSERVATION REPORT
DETAILED INVENTORY**

PROJECT NO. 116111

REV # 4

DRAWING NO. 116111-TCR2

NOVATECH
Engineers, Planners & Landscape Architects
Suite 200, 240 Michael Cowpland Drive
Ottawa, Ontario, Canada K2M 1P6
Telephone: (613) 254-9643
Facsimile: (613) 254-5867
Website: www.novatech-eng.com