

Allison Hamlin

ALLISON HAMLIN
MANAGER (A), DEVELOPMENT REVIEW WEST
PLANNING, REAL ESTATE & ECONOMIC DEVELOPMENT
DEPARTMENT, CITY OF OTTAWA

APPROVED
 By Allison Hamlin at 1:16 pm, Aug 03, 2023

MP-01	ALUMINUM COMPOSITE METAL (ACM) RANSCREEN PANEL ASSEMBLY - SEE ELEVATIONS FOR COLOR & ORIENTATION. FINAL COLOR, TBO, COLOR SAMPLES TO BE SUBMITTED TO ARCHITECT & DESIGNER FOR REVIEW	DM-01	DECORATIVE METAL - PERFORATED METAL PANEL SCREEN. B.O.D. ZANNER. GRAPHIC IMAGE PROVIDED BY OWNER
MP-02	INSULATED METAL PANEL (IMP) ASSEMBLY - VERTICAL ORIENTATION U.O. COLOR MAY VARY. SEE ELEVATIONS FOR COLOR & ORIENTATION. FINAL COLOR, TBO, COLOR SAMPLES TO BE SUBMITTED TO ARCHITECT & DESIGNER FOR REVIEW	MT-03	ALUMINUM COMPOSITE METAL (ACM) RANSCREEN PANEL ASSEMBLY W/ STONE LOOK - SEE ELEVATIONS FOR COLOR & ORIENTATION. FINAL COLOR, TBO, COLOR SAMPLES TO BE SUBMITTED TO ARCHITECT & DESIGNER FOR REVIEW
MP-03	INSULATED METAL PANEL (IMP) ASSEMBLY - VERTICAL ORIENTATION U.O. COLOR MAY VARY. SEE ELEVATIONS FOR COLOR & ORIENTATION. FINAL COLOR, TBO, COLOR SAMPLES TO BE SUBMITTED TO ARCHITECT & DESIGNER FOR REVIEW	MV-02	MASONRY VENEER - STACKED STONE W/ SOLID STONE CAP LEDGESTONE FINISH STYLE. FINAL COLOR, TBO, SAMPLES TO BE SUBMITTED TO ARCHITECT & DESIGNER FOR REVIEW
CP-01	WOOD LOOK COMPOSITE PANEL ASSEMBLY - FINAL COLOR, TBO, COLOR SAMPLES TO BE SUBMITTED TO ARCHITECT & DESIGNER FOR REVIEW	RS-01	ROOF SCREEN - CS GROUP. METAL VISION SCREEN B.O.D. VERT-A-JADE SERIES. FINAL COLOR, TBO, SAMPLES TO BE SUBMITTED TO ARCHITECT & DESIGNER FOR REVIEW
VG-01	VINYL GRAPHIC - TRANSLUCENT SELF ADHERED VINYL GRAPHIC APPLIED TO REVERSE FACE OF GLASS. GRAPHIC IMAGE PROVIDED BY OWNER	CC-01	COLUMN COVER - DMIS INC. PRE-FAB. STAINLESS STEEL COLUMN COVER

EXTERIOR MATERIALS LEGEND

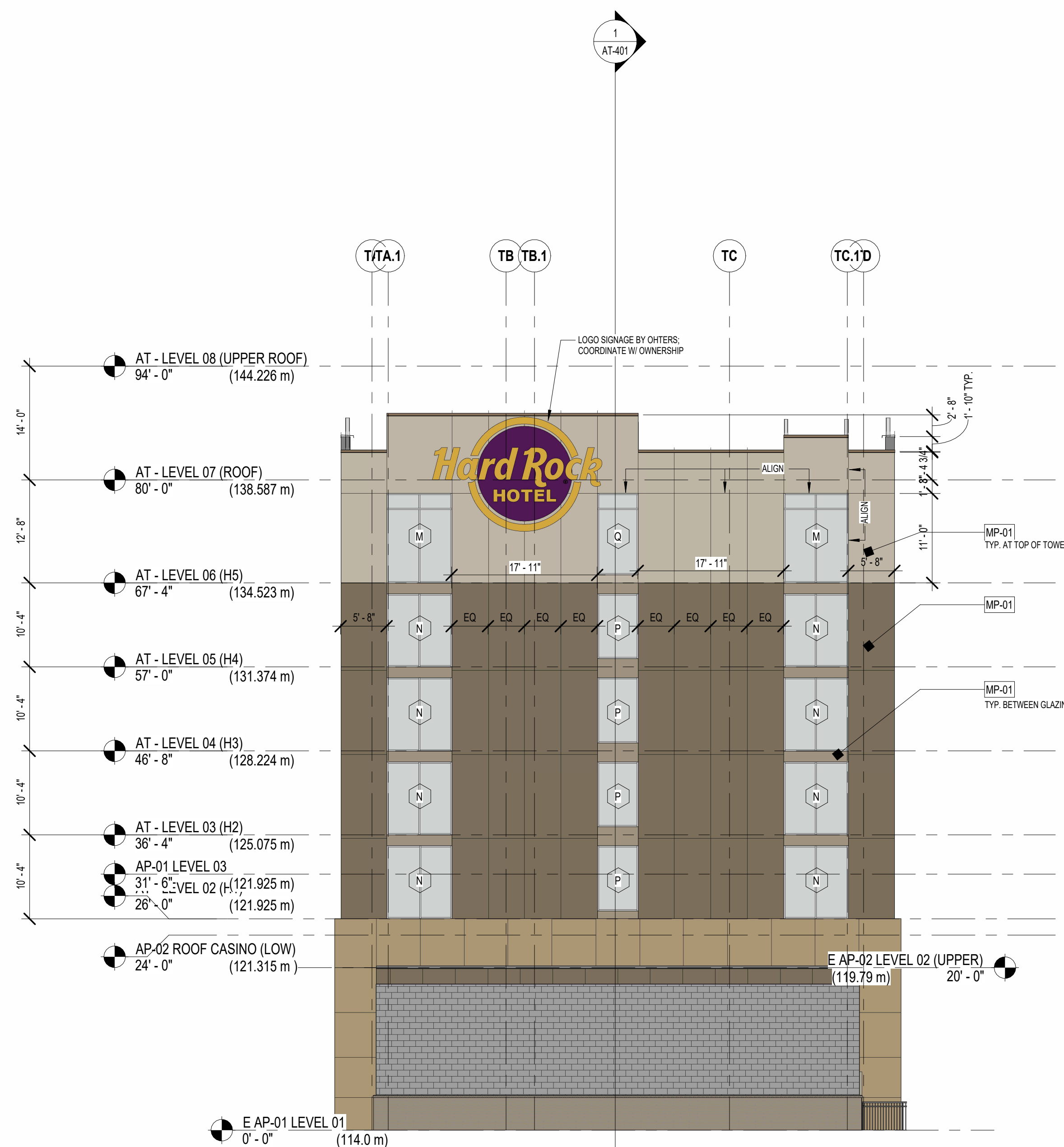
SCALE
 N.T.S.



REVISED PER CITY COMMENTS

SUBMISSIONS		
NO.	DATE	DESCRIPTION
9	July 25th 2023	REVISED PER CITY COMMENTS
8	July 14th 2023	ISSUED FOR PERMIT
7	June 20th 2023	REVISED PER CITY COMMENTS
6	June 14th 2023	ISSUED FOR GMP
5	March 3rd 2023	REVISED PER CITY COMMENTS
4	November 15th 2022	DESIGN DOCUMENTS PACKAGE
3	November 8th 2022	REVISED PER CITY COMMENTS
2	April 24th 2020	REVISED PER CITY COMMENTS
1	November 20th 2019	ISSUED FOR SITE PLAN APPROVAL

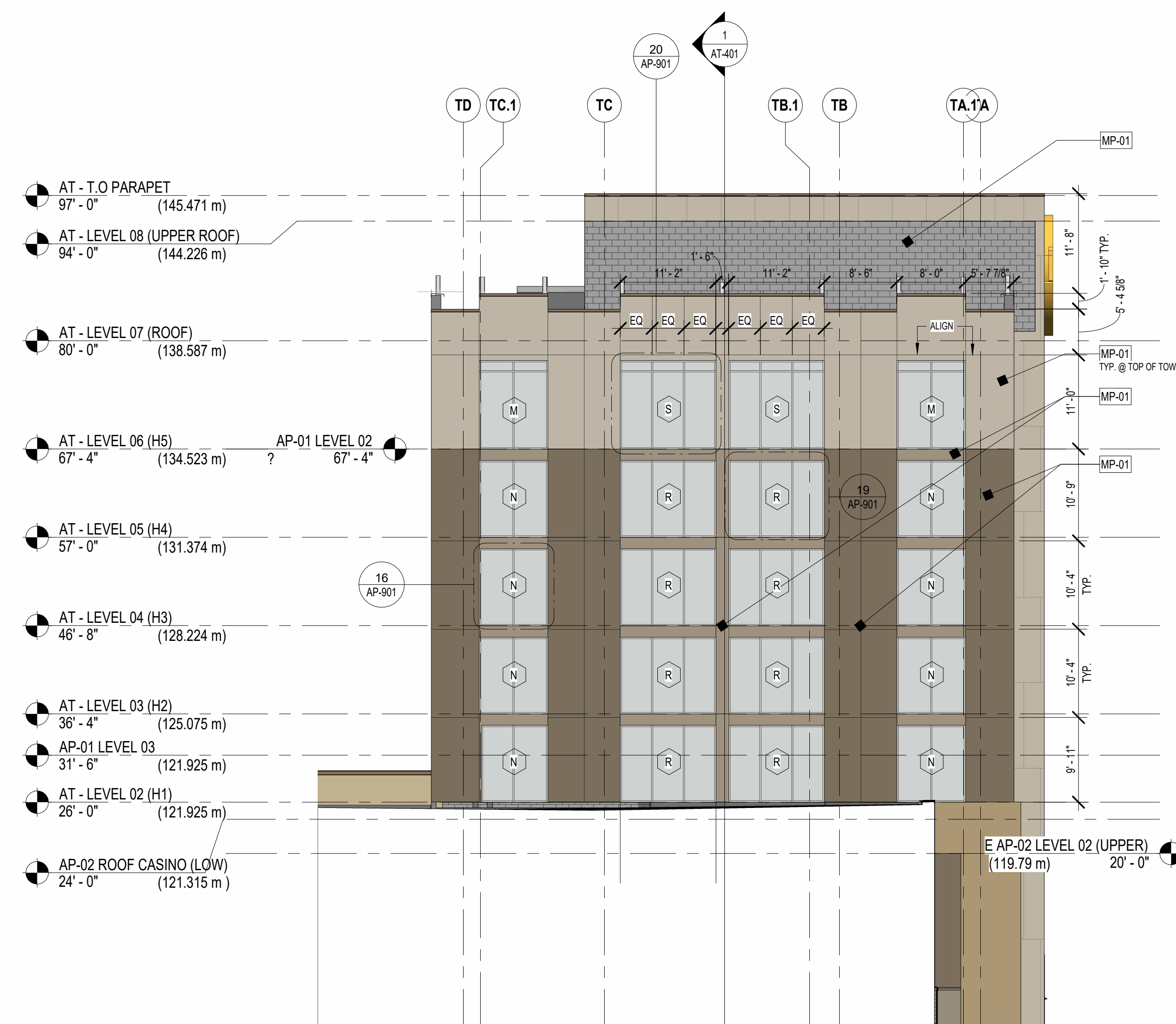
DRAWING TITLE: Hotel Elevations 2	
DRAWN BY: MS	DATE: July 25th 2023
REVIEWED BY: RY	SCALE: DRAWING NO.
PROJECT NO. 22-001	SP-004-10



SOUTH TOWER ELEVATION

SCALE
 3/32" = 1'-0"

2



NORTH TOWER ELEVATION

SCALE
 3/32" = 1'-0"

1