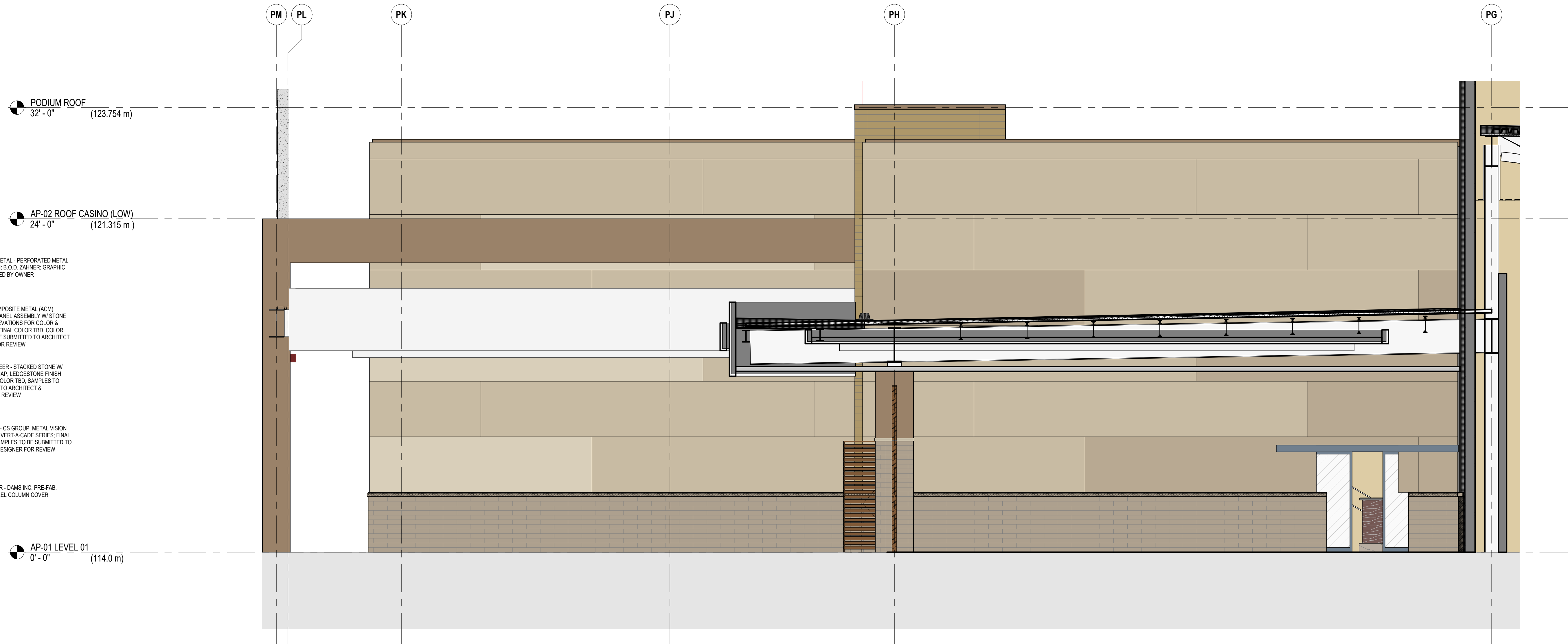


AtHamlin

ALLISON HAMLIN
MANAGER (A), DEVELOPMENT REVIEW WEST
PLANNING, REAL ESTATE & ECONOMIC DEVELOPMENT
DEPARTMENT, CITY OF OTTAWA

APPROVED
By Allison Hamlin at 1:16 pm, Aug 03, 2023

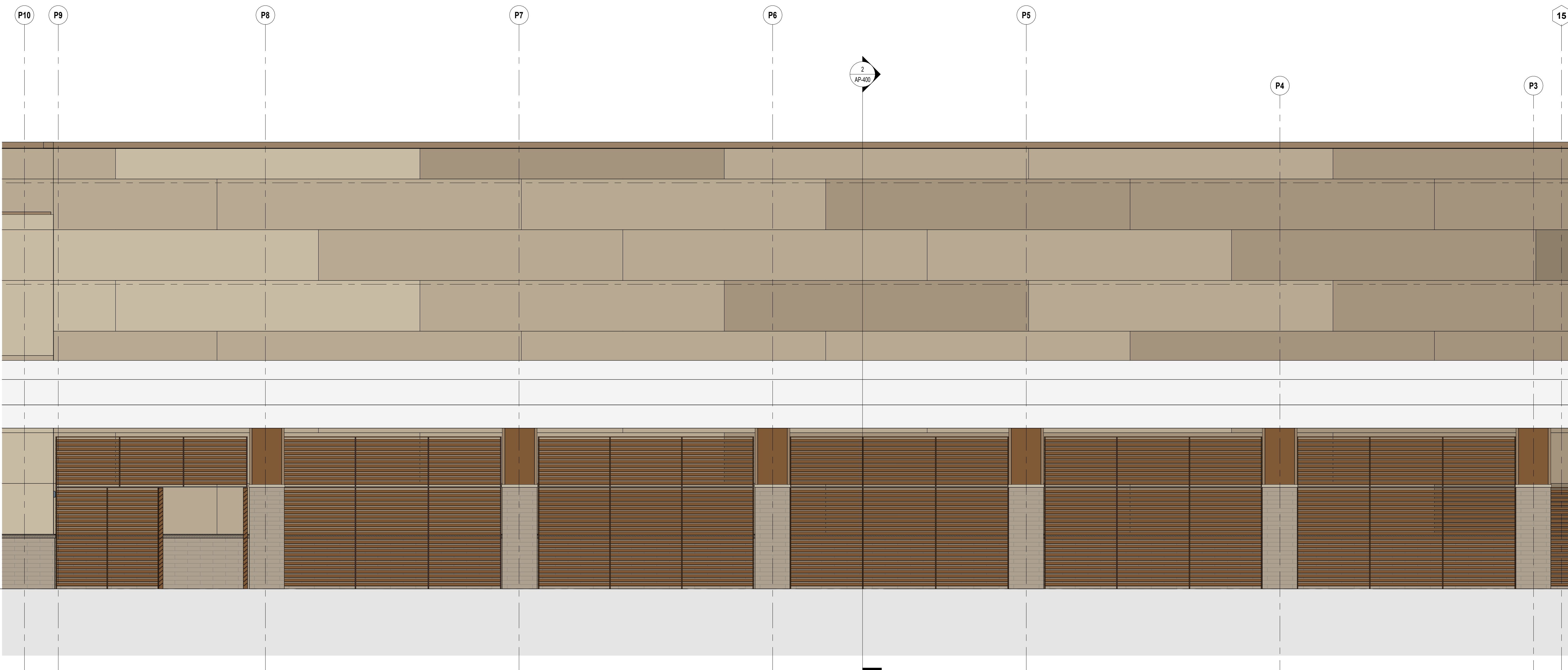
- MP-01 ALUMINUM COMPOSITE METAL (ACM) RAINSCREEN PANEL ASSEMBLY - SEE ELEVATIONS FOR COLOR & ORIENTATION. FINAL COLOR TBD. COLOR SAMPLES TO BE SUBMITTED TO ARCHITECT & DESIGNER FOR REVIEW
- MP-02 INSULATED METAL PANEL (IMP) ASSEMBLY - VERTICAL ORIENTATION U.N.O. COLOR MAY VARY. SEE ELEVATIONS. FINAL COLOR TBD. COLOR SAMPLES TO BE SUBMITTED TO ARCHITECT & DESIGNER FOR REVIEW
- MP-03 INSULATED METAL PANEL (IMP) ASSEMBLY - VERTICAL ORIENTATION U.N.O. COLOR MAY VARY. SEE ELEVATIONS. FINAL COLOR TBD. COLOR SAMPLES TO BE SUBMITTED TO ARCHITECT & DESIGNER FOR REVIEW
- CP-01 WOOD LOOK COMPOSITE PANEL ASSEMBLY - FINAL COLOR TBD. COLOR SAMPLES TO BE SUBMITTED TO ARCHITECT & DESIGNER FOR REVIEW
- VG-01 VINYL GRAPHIC - TRANSLUCENT SELF ADHERED VINYL GRAPHIC APPLIED TO INSIDE FACE OF GLASS. GRAPHIC IMAGE PROVIDED BY OWNER
- DM-01 DECORATIVE METAL - PERFORATED METAL PANEL SCREEN. B.O.D. ZAHNER. GRAPHIC IMAGE PROVIDED BY OWNER
- MT-03 ALUMINUM COMPOSITE METAL (ACM) RAINSCREEN PANEL ASSEMBLY W/ STONE LOOK - SEE ELEVATIONS FOR COLOR & ORIENTATION. FINAL COLOR TBD. COLOR SAMPLES TO BE SUBMITTED TO ARCHITECT & DESIGNER FOR REVIEW
- MV-02 MASONRY VENEER - STACKED STONE W/ SOLID STONE CAP. LEDGESTONE FINISH STYLE. FINAL COLOR TBD. SAMPLES TO BE SUBMITTED TO ARCHITECT & DESIGNER FOR REVIEW
- RS-01 ROOF SCREEN - CS GROUP METAL VISION SCREEN B.O.D. VERT-A-JADE SERIES. FINAL COLOR TBD. SAMPLES TO BE SUBMITTED TO ARCHITECT & DESIGNER FOR REVIEW
- CC-01 COLUMN COVER - DAMS INC. PRE-FAB STAINLESS STEEL COLUMN COVER



EAST SIDE ENTRY

SCALE
E
1/4" = 1'-0"

2



SOUTH SIDE ENTRY

SCALE
E
1/4" = 1'-0"

1

YALOWEGA
architecture inc.

157 Slipac St, Greater Sudbury,
ON P3B 3E5
+1 705-806-4643

ONTARIO ASSOCIATION
OF ARCHITECTS
RICHARD YALOWEGA
LICENCE
#4202

SNC-LAVALIN

1600 Carling Ave, Ottawa, ON K1Y 1B2
+1 800-397-2458

sense engineering

60 Ryeburn Dr, Gloucester, ON K1V 1H5
+1 613-884-4785

NOVATECH

2540 Sheffield Rd, Ottawa, ON K1B 3V6
+1 613-749-8191

Hard Rock CASINO

Hard Rock Ottawa Hotel & Casino SP Agreement

4837 ALBION RD,
GLOUCESTER, OTTAWA
ONTARIO, CANADA

REVISED PER CITY COMMENTS

SUBMISSIONS

NO.	DATE	DESCRIPTION
9	July 28th 2023	REVISED PER CITY COMMENTS
8	July 14th 2023	ISSUED FOR PERMIT
7	June 20th 2023	REVISED PER CITY COMMENTS
6	June 14th 2023	ISSUED FOR CMP
5	March 3rd 2023	REVISED PER CITY COMMENTS
4	November 15th 2022	DESIGN DOCUMENTS PACKAGE
3	November 8th 2022	REVISED PER CITY COMMENTS
2	April 24th 2020	REVISED PER CITY COMMENTS
1	November 20th 2019	ISSUED FOR SITE PLAN APPROVAL

DRAWING TITLE:
Enlarged Elevations 2

DRAWN BY: MS DATE: July 25th 2023
REVIEWED BY: RY

SCALE: DRAWING NO. SP-004-8

PROJECT NO. 22-001