

TREE PROTECTION NOTES

The following protection measures must be implemented for retained trees, both on site and on adjacent sites, prior to any tree removal or site works and maintained for the duration of construction on site:

- Under the guidance of a Landscape Architect or Certified Arborist, erect a fence at the critical root zone (CRZ) of trees where the CRZ is established as being 10 centimetres from the trunk of a tree for every centimetre of trunk diameter at breast height. The CRZ is calculated as DBH x 10cm. Refer to the Tree Protection Fence detail. See plan for fence location.
- When trees to be removed overlap with the CRZ of trees to be preserved, cut roots at the edge of the CRZ and grind down stumps after tree removals, do not pull out stumps. Ensure there is not root pulling or disturbance of the ground within the CRZ.
- If roots must be cut, roots 20mm or larger should be cut at right angles with clean, sharp horticultural tools without tearing, crushing, or pulling. Refer to City of Ottawa Specification S.P. F-8011 Tree Protection, Excavation of Root Zone.
- Hand work only where required within the CRZ; absolutely no machinery permitted.
- Do not place any material or equipment within the CRZ of any tree.
- Do not attach any signs, notices or posters to any tree.
- Do not disturb, raise or lower the existing grade within the CRZ without approval.
- Only tunnel or bore when digging within the CRZ of a tree.
- Do not damage the root system, trunk, or branches of any tree.
- Ensure that exhaust fumes from all equipment are directed away from any tree canopy.

LANDSCAPE LEGEND:

- EXISTING TREE TO REMAIN
- EXISTING TREE TO REMOVE
- CRITICAL ROOT ZONE (CRZ)
- TREE PROTECTION FENCE

TREE PROTECTION FENCE D1

REFER TO THE TREE PROTECTION NOTES FOUND ON THE PLANS AND/OR REPORT.

A TEMPORARY FENCE SHALL BE ERECTED TO PROTECT THE CRITICAL ROOT ZONE (CRZ). THE CRZ IS ESTABLISHED AS DBH x 10cm. SEE PLAN FOR LOCATION.

PRUNE BRANCHES TO REMOVE DAMAGED OR OBSTRUCTIVE BRANCHES. DO NOT PRUNE LEADERS. DO NOT PRUNE MORE THAN 1/3 OF CROWN.

TREE PROTECTION TO REMAIN UNTIL THE SODDING/ SEEDING PHASE OF THE PROJECT IS STARTED. REMOVE FENCE AT THIS TIME.

IF TREES ARE BEING AFFECTED BY CONSTRUCTION, A WATER AND FERTILIZING PROGRAM WILL NEED TO BE SET UP TO THE SATISFACTION OF THE LANDSCAPE ARCHITECT.

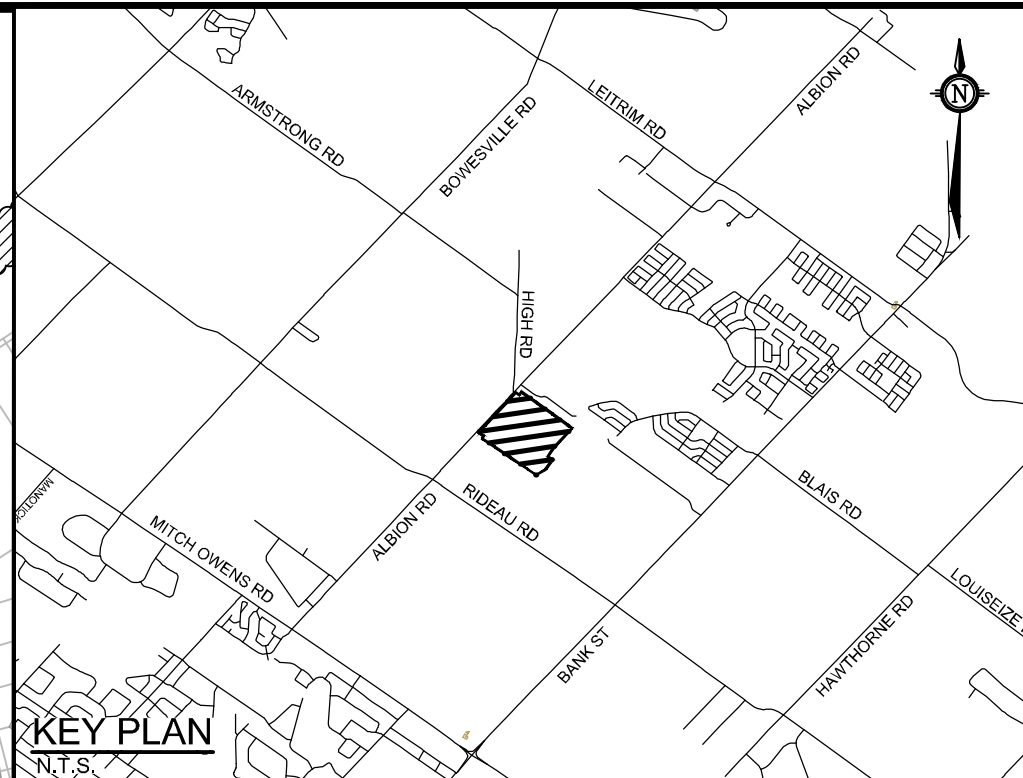
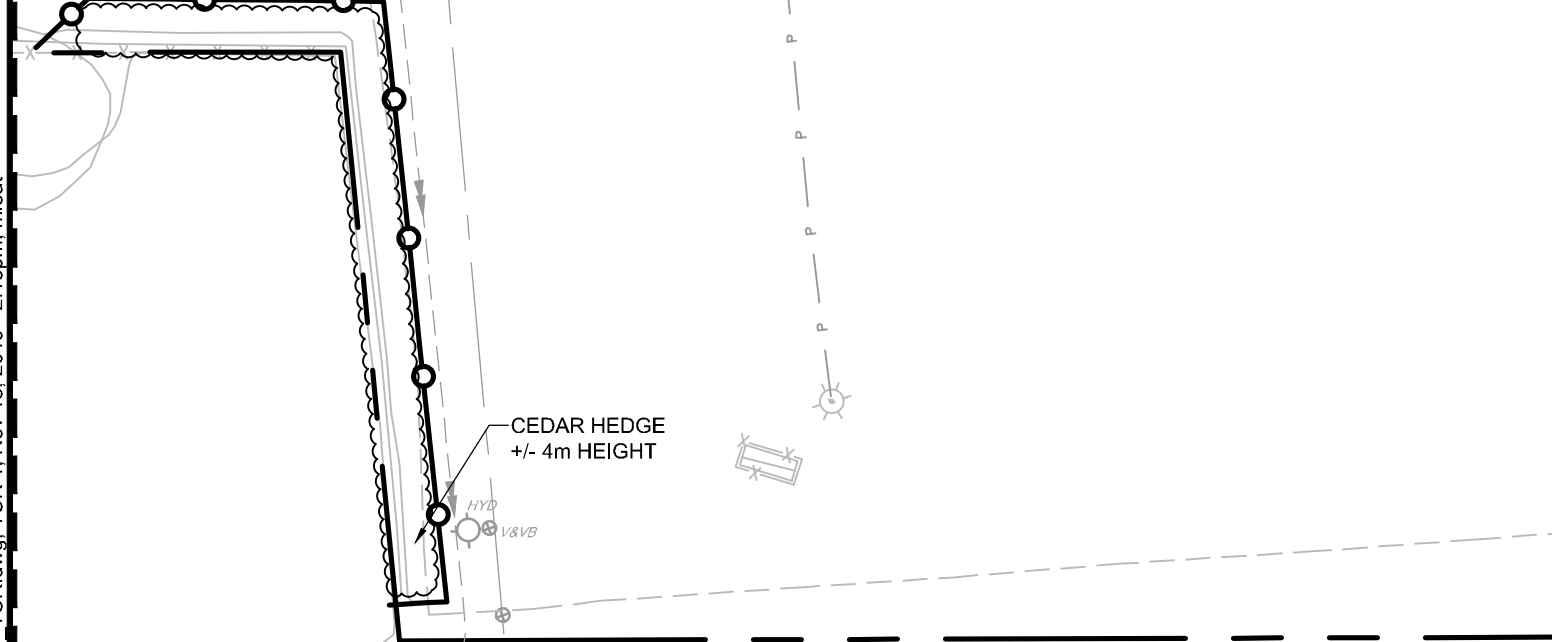
ATTACH FENCE WITH ZIP TIES. USE 2x4 WOOD TOP RAIL TO SUPPORT LONG LENGTHS, AS REQUIRED.

STEEL T BAR WITH PREDRILLED HOLES

ORANGE SNOV FENCE OR STANDARD PAGE WIRE FARM FENCE, 1200mm HT.

UNDISTURBED SOIL

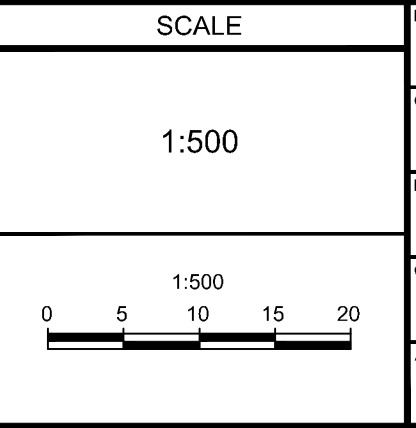
No.	Botanical Name	Common Name	DBH (m)	CRZ (m)	Condition	Remarks	Recomm.
1	Acer platanoides	Norway Maple	0.20	2.00	P	Dead leader, black spot, open seam on trunk	Remove
2	Acer platanoides	Norway Maple	0.22	2.20	F	Black spot	Remove
3	Acer platanoides	Norway Maple	0.20	2.00	F	Dead limbs at top, black spot	Remove
4	Acer platanoides	Norway Maple	0.22	2.20	F	Dead limbs at top, black spot	Remove
5	Acer platanoides	Norway Maple	0.18	1.80	F	Dead limbs at top, black spot	Remove
6	Acer platanoides	Norway Maple	0.10	1.00	P	1/2 canopy dead, black spot, suckers	Remove
7	Acer platanoides	Norway Maple	2.40	2.40	G		Remove
8	Prunus x cistena	Purple Leaf Sand Cherry	0.07	0.70	G	Memorial plaque	Remove
9	Sorbus aucuparia	Mountain Ash	0.05	0.50	G	Memorial plaque, dead limbs at top	Remove
10	Amelanchier sp.	Serviceberry	0.02	0.20	G	Memorial plaque, stakes and guys - recent planting	Remove
11	Milvus sp.	Crabapple	0.05	0.50	G	Memorial plaque	Remove
12	Amelanchier sp.	Serviceberry	0.02	0.20	G	Memorial plaque, stakes and guys - recent planting	Remove
13	Acer platanoides	Norway Maple	0.15	1.50	F		Remove
14	Milvus sp.	Crabapple	0.14	1.40	G		Remove
15	Milvus sp.	Crabapple	0.12	1.20	G		Remove
16	Milvus sp.	Crabapple	0.16	1.60	G		Remove
17	Acer platanoides	Norway Maple	0.20	2.00	G		Remove
18	Acer platanoides	Norway Maple	0.17	1.70	P	Dead top, 1/2 canopy, seam on trunk	Remove
19	Acer platanoides	Norway Maple	0.16	1.60	F	Defoliated early	Remove
20	Acer platanoides	Norway Maple	0.21	2.10	G		Remove
21	Acer platanoides	Norway Maple	0.14	1.40	G		Remove
22	Acer platanoides	Norway Maple	0.17	1.70	P	Dead limbs at top	Remove
23	Acer platanoides	Norway Maple	0.20	2.00	G		Remove
24	Acer platanoides	Norway Maple	0.16	1.60	G		Remove
25	Acer platanoides	Norway Maple	0.16	1.60	P	Defoliated early, dead limbs at top	Remove
26	Acer platanoides	Norway Maple	0.17	1.70	F		Remove
27	Acer platanoides	Norway Maple	0.19	1.90	G		Remove
28	Acer platanoides	Norway Maple	0.18	1.80	G		Remove
29	Acer platanoides	Norway Maple	0.16	1.60	G		Remove
30	Acer platanoides	Norway Maple	0.15	1.50	F	Defoliated early	Remove
31	Acer platanoides	Norway Maple	0.15	1.50	G		Remove
32	Acer platanoides	Norway Maple	0.15	1.50	F	Defoliated early	Remove
33	Acer platanoides	Norway Maple	0.08	0.80	G		Remove
34	Acer platanoides	Norway Maple	0.22	2.20	G		Remove
35	Milvus sp.	Crabapple	0.08	0.80	G		Remove
36	Milvus sp.	Crabapple	0.08	0.80	G		Remove
37	Milvus sp.	Crabapple	1.30	1.30	G	Columnar form	Remove
38	Populus sp.	White Pine	0.11	1.10	G	Columnar form	Remove
39	Acer platanoides	Norway Maple	0.20	2.00	G		Remove
40	Acer platanoides	Norway Maple	0.16	1.60	F	Defoliated early	Remove
41	Acer platanoides	Norway Maple	0.16	1.60	F	Defoliated early	Remove
42	Acer platanoides	Norway Maple	0.16	1.60	F	Defoliated early	Remove
43	Acer platanoides	Norway Maple	0.18	1.80	G		Remove
44	Acer platanoides	Norway Maple	0.18	1.80	F	Defoliated early	Remove
45	Acer platanoides	Norway Maple	0.18	1.80	G		Remove
46	Acer platanoides	Norway Maple	0.18	1.80	G		Remove
47	Acer platanoides	Norway Maple	0.18	1.80	G	Dead top, defoliated early	Remove
48	Acer platanoides	Norway Maple	0.18	1.80	F	Defoliated early	Remove
49	Acer platanoides	Norway Maple	0.18	1.80	F	Major seam in trunk	Remove
50	Acer platanoides	Norway Maple	0.18	1.80	P	Dead limbs at top	Remove
51	Acer platanoides	Norway Maple	0.16	1.60	G		Remove
52	Acer platanoides	Norway Maple	0.20	2.00	F		Remove
53	Acer platanoides	Norway Maple	0.17	1.70	F		Remove
54	Acer platanoides	Norway Maple	0.21	2.10	G		Remove
55	Acer platanoides	Norway Maple	0.21	2.10	G		Remove
56	Acer platanoides	Norway Maple	0.15	1.50	G		Remove
57	Acer platanoides	Norway Maple	0.12	1.20	G	Some bark loose on trunk	Remove
58	Acer platanoides	Norway Maple	0.14	1.40	F	Bark loose on trunk	Remove
59	Acer platanoides	Norway Maple	0.13	1.30	F		Remove
60	Acer platanoides	Norway Maple	0.13	1.30	F		Remove
61	Acer platanoides	Norway Maple	0.13	1.30	G	Major seam in trunk	Remove
62	Acer platanoides	Norway Maple	0.25	2.50	G		Remove
63	Acer platanoides	Norway Maple	0.25	2.50	G		Remove
64	Acer platanoides	Norway Maple	0.25	2.50	G		Remove
65	Acer platanoides	Norway Maple	0.18	1.80	G		Remove
66	Acer platanoides	Norway Maple	0.20	2.00	G		Remove
67	Acer platanoides	Norway Maple	0.22	2.20	G		Remove
68	Acer platanoides	Norway Maple	0.27	2.70	G		Remove
69	Prunus x cistena	Purple Leaf Sand Cherry	0.13	1.30	G		Remove
70	Tilia cordata	Linden	0.20	2.00	G		Remove
71	Acer platanoides	Norway Maple	0.12	1.20	G		Remove
72	Acer platanoides	Norway Maple	0.11	1.10	G		Remove
73	Acer platanoides	Norway Maple	0.12	1.20	F		Remove
74	Acer platanoides	Norway Maple	0.11	1.10	G	1/2 dead, fungus on trunk	Remove
75	Amelanchier sp.	Serviceberry	0.11	1.10	G	Multistem, 3m height	Remove
76	Amelanchier sp.	Serviceberry	0.11	1.10	G	Multistem, 3m height	Remove
77	Betula papyrifera	Paper Birch	0.09,0.06,0.04	0.9,0.6,0.4	G	Multistem	Remove
78	Betula papyrifera	Paper Birch	0.12,0.08	1.2,0.8	G	Multistem	Remove
79	Prunus x cistena	Purple Leaf Sand Cherry	0.08	0.80	F	Sant damage, black knot fungus	Remove
80	Thuja occidentalis	White Cedar			G	Clump, 8m height	Remove
81	Thuja occidentalis	White Cedar			G	Clump, 8m height	Remove



NOTE:
THE POSITION OF ALL POLE LINES, CONDUITS, WATERMANS, SEWERS AND OTHER UNDERGROUND AND OVERGROUND UTILITIES AND STRUCTURES IS NOT NECESSARILY SHOWN ON THE CONTRACT DRAWINGS, AND WHERE SHOWN, THE ACCURACY OF THE POSITION OF SUCH UTILITIES AND STRUCTURES IS NOT GUARANTEED. BEFORE STARTING WORK, DETERMINE THE EXACT LOCATION OF ALL SUCH UTILITIES AND STRUCTURES AND ASSUME ALL LIABILITY FOR DAMAGE TO THEM.

NOT FOR CONSTRUCTION

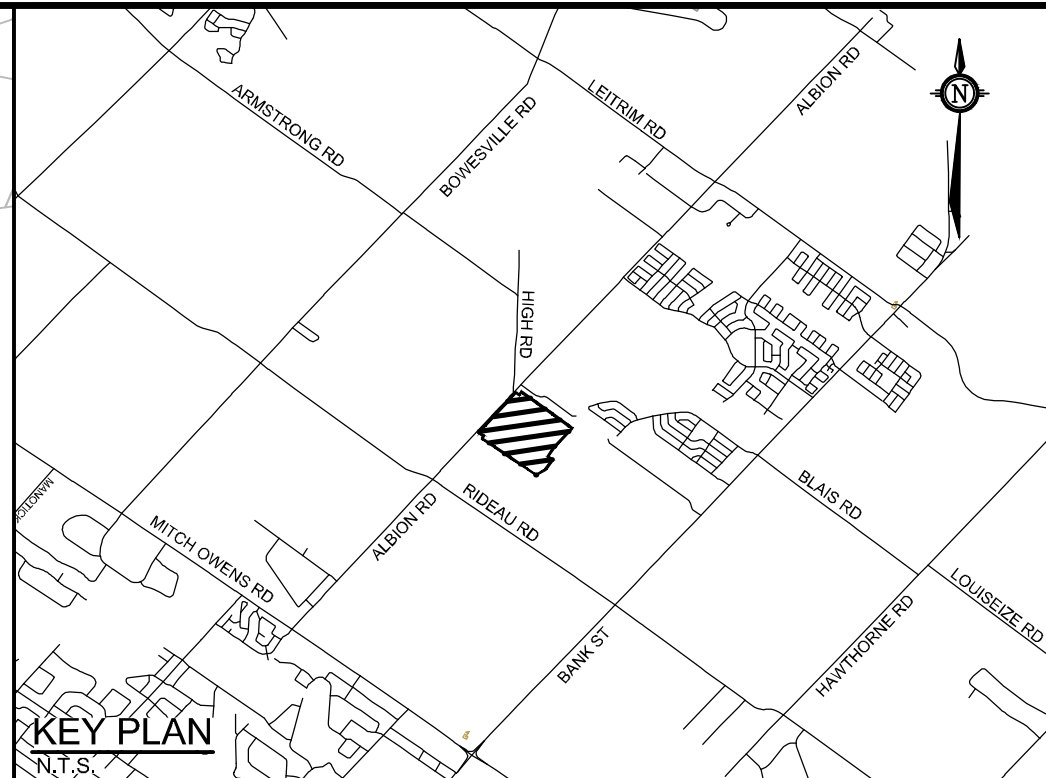
No.	REVISION	DATE	BY
2	ISSUED FOR SITE PLAN APPLICATION	NOV 18/19	RGJ
1	ISSUED FOR COORDINATION	NOV 5/19	RGJ



DESIGN	FOR REVIEW ONLY
KEW/RGJ	
RGJ	
KEW	
RGJ	
RGJ	



LOCATION 4837 ALBION ROAD, CITY OF OTTAWA RIDEAU CARLETON RACEWAY AND SLOTS EXPANSION	PROJECT No. 116111
DRAWING NAME TREE CONSERVATION REPORT DETAILED INVENTORY	REV # 2 116111-TCR1



LANDSCAPE LEGEND:

- AREA DESCRIBED IN ENVIRONMENTAL IMPACT STATEMENT
- EXISTING VEGETATION TO REMOVE

NORTH

FOR FURTHER INFORMATION, REFER TO THE ENVIRONMENTAL IMPACT STATEMENT BY MUNCASTER ENVIRONMENTAL PLANNING INC., OCTOBER 28, 2019.

FOR FURTHER INFORMATION, REFER TO THE ENVIRONMENTAL IMPACT STATEMENT BY MUNCASTER ENVIRONMENTAL PLANNING INC., OCTOBER 28, 2019.

REFER TO 116111 - TCR1

TO BE PRESERVED

TO BE REMOVED

TO BE REMOVED

TO BE PRESERVED

NOTE: THE POSITION OF ALL POLE LINES, CONDUITS, WATERMANS, SEWERS AND OTHER UNDERGROUND AND OVERGROUND UTILITIES AND STRUCTURES IS NOT NECESSARILY SHOWN ON THE CONTRACT DRAWINGS, AND WHERE SHOWN, THE ACCURACY OF THE POSITION OF SUCH UTILITIES AND STRUCTURES IS NOT GUARANTEED. BEFORE STARTING WORK, DETERMINE THE EXACT LOCATION OF ALL SUCH UTILITIES AND STRUCTURES AND ASSUME ALL LIABILITY FOR DAMAGE TO THEM.

NOT FOR CONSTRUCTION

NO.	REVISION	DATE	BY
2	ISSUED FOR SITE PLAN APPLICATION	NOV 18/19	RGJ
1	ISSUED FOR COORDINATION	NOV 5/19	RGJ

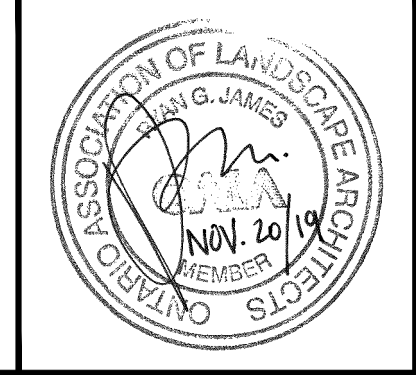
SCALE

1:1000

FOR REVIEW ONLY

DESIGN: KEW/RGJ
 CHECKED: RGJ
 DRAWN: KEW
 CHECKED: RGJ
 APPROVED: RGJ

NOVATECH
 Engineers, Planners & Landscape Architects
 Suite 200, 240 Michael Cowpland Drive
 Ottawa, Ontario, Canada K2M 1P6
 Telephone: (613) 254-9643
 Facsimile: (613) 254-5867
 Website: www.novatech-eng.com



LOCATION: 4837 ALBION ROAD, CITY OF OTTAWA
 RIDEAU CARLETON RACEWAY AND SLOTS EXPANSION

DRAWING NAME: TREE CONSERVATION REPORT OVERALL PLAN

PROJECT NO.: 116111
 REV # 2
 DRAWING NO.: 116111-TCR2

C:\Users\116111\OneDrive\Desktop\116111_TCR\Drawings\116111_TCR_Overall_Plan.dwg, TCR Date: 11/18/19, 11/18/19, 2:13pm, mtlab