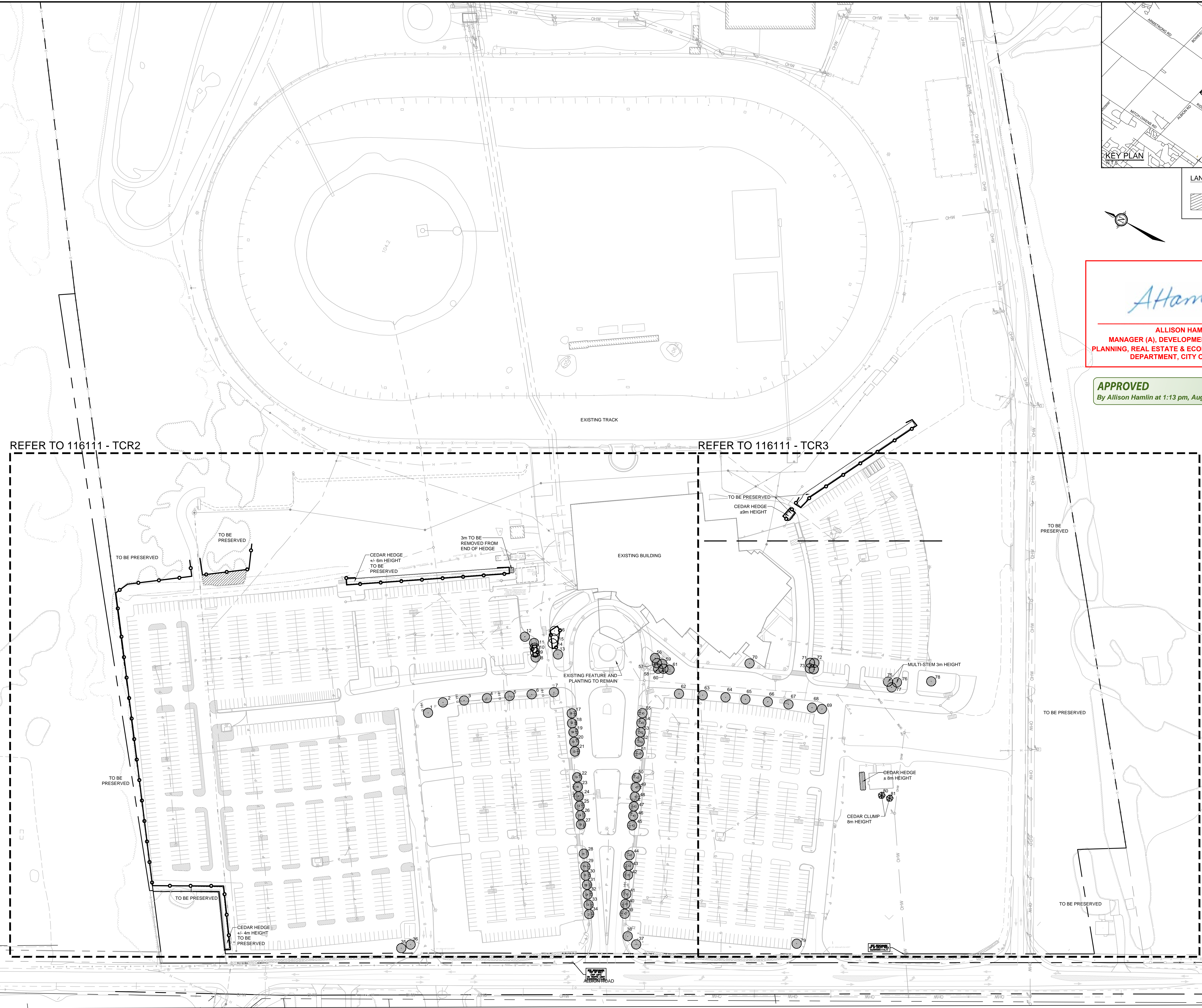


LANDSCAPE LEGEND:
 EXISTING VEGETATION TO REMOVE

Allison Hamlin
ALLISON HAMLIN
 MANAGER (A), DEVELOPMENT REVIEW WEST
 PLANNING, REAL ESTATE & ECONOMIC DEVELOPMENT
 DEPARTMENT, CITY OF OTTAWA

APPROVED
 By Allison Hamlin at 1:13 pm, Aug 03, 2023



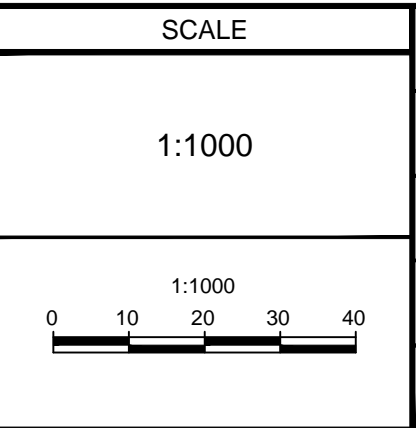
REFER TO 116111 - TCR2

REFER TO 116111 - TCR3

NOT FOR CONSTRUCTION

NOTE:
 THE POSITION OF ALL POLE LINES, CONDUITS, WATERMANS, SEWERS AND OTHER UNDERGROUND AND OVERGROUND UTILITIES AND STRUCTURES IS NOT NECESSARILY SHOWN ON THE CONTRACT DRAWINGS, AND WHERE SHOWN, THE ACCURACY OF THE POSITION OF SUCH UTILITIES AND STRUCTURES IS NOT GUARANTEED. BEFORE STARTING WORK, DETERMINE THE EXACT LOCATION OF ALL SUCH UTILITIES AND STRUCTURES AND ASSUME ALL LIABILITY FOR DAMAGE TO THEM.

No.	REVISION	DATE	BY
1.	ISSUED FOR COORDINATION	NOV 5/19	RGJ
2.	ISSUED FOR SITE PLAN APPLICATION	NOV 18/19	RGJ
3.	ISSUED FOR COORDINATION	MAR 23/20	RGJ
4.	ISSUED FOR SITE PLAN APPLICATION	APR 24/20	RGJ



DESIGN	FOR REVIEW ONLY
KEW/RGJ	
CHECKED	RGJ
DRAWN	KEW
CHECKED	RGJ
APPROVED	RGJ

NOVATECH
 Engineers, Planners & Landscape Architects
 Suite 200, 240 Michael Cowland Drive
 Ottawa, Ontario, Canada K2M 1P6
 Telephone: (613) 254-9643
 Facsimile: (613) 254-5867
 Website: www.novatech-eng.com

LOCATION
 4837 ALBION ROAD, CITY OF OTTAWA
 RIDEAU CARLETON RACEWAY AND SLOTS EXPANSION

DRAWING NAME
**TREE CONSERVATION REPORT
 OVERALL PLAN**

PROJECT No. 116111
 REV # 4
 DRAWING No. 116111-TCR1