

At Hamlin

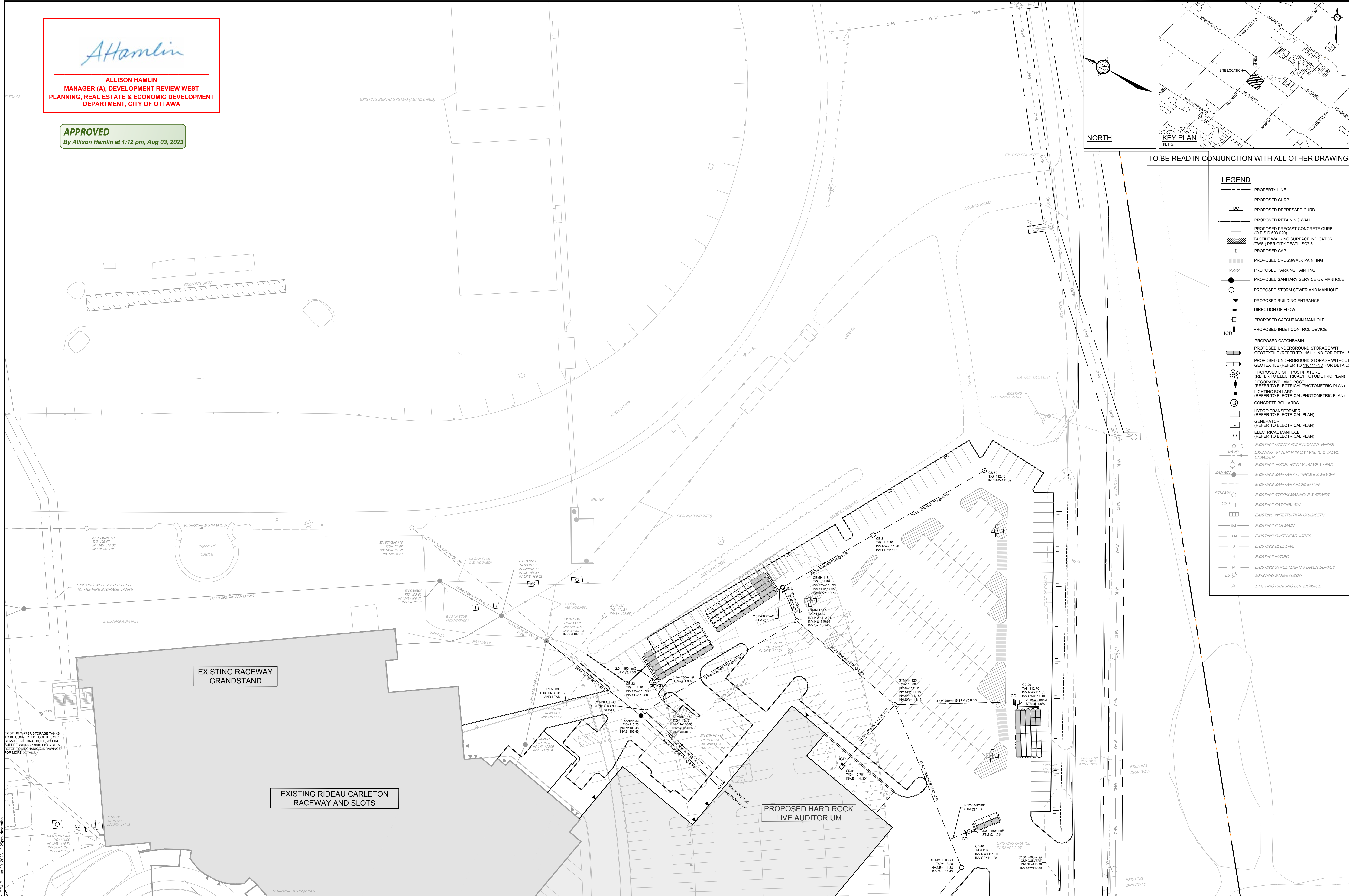
ALLISON HAMLIN
MANAGER (A), DEVELOPMENT REVIEW WEST
PLANNING, REAL ESTATE & ECONOMIC DEVELOPMENT
DEPARTMENT, CITY OF OTTAWA

APPROVED
By Allison Hamlin at 1:12 pm, Aug 03, 2023

TO BE READ IN CONJUNCTION WITH ALL OTHER DRAWINGS

LEGEND

---	PROPERTY LINE
---	PROPOSED CURB
DC	PROPOSED DEPRESSED CURB
---	PROPOSED RETAINING WALL
---	PROPOSED PRECAST CONCRETE CURB (O.P.S.D 603.020)
---	TACTILE WALKING SURFACE INDICATOR (TWS) PER CITY DEATIL SCT-3
---	PROPOSED CAP
---	PROPOSED CROSSWALK PAINTING
---	PROPOSED PARKING PAINTING
---	PROPOSED SANITARY SERVICE c/w MANHOLE
---	PROPOSED STORM SEWER AND MANHOLE
---	PROPOSED BUILDING ENTRANCE
---	DIRECTION OF FLOW
---	PROPOSED CATCHBASIN MANHOLE
ICD	PROPOSED INLET CONTROL DEVICE
---	PROPOSED CATCHBASIN
---	PROPOSED UNDERGROUND STORAGE WITH GEOTEXTILE (REFER TO 116111-ND FOR DETAILS)
---	PROPOSED UNDERGROUND STORAGE WITHOUT GEOTEXTILE (REFER TO 116111-ND FOR DETAILS)
---	PROPOSED LIGHT POST/FIXTURE (REFER TO ELECTRICAL/PHOTOMETRIC PLAN)
---	DECORATIVE LAMP POST (REFER TO ELECTRICAL/PHOTOMETRIC PLAN)
---	LIGHTING BOLLARD (REFER TO ELECTRICAL/PHOTOMETRIC PLAN)
---	CONCRETE BOLLARDS
T	HYDRO TRANSFORMER (REFER TO ELECTRICAL PLAN)
G	GENERATOR (REFER TO ELECTRICAL PLAN)
---	ELECTRICAL MANHOLE (REFER TO ELECTRICAL PLAN)
---	EXISTING UTILITY POLE c/w GUY WIRES
---	EXISTING WATERMAIN c/w VALVE & VALVE CHAMBER
---	EXISTING HYDRANT c/w VALVE & LEAD
---	EXISTING SANITARY MANHOLE & SEWER
---	EXISTING SANITARY FORCEMAIN
---	EXISTING STORM MANHOLE & SEWER
---	EXISTING CATCHBASIN
---	EXISTING INFILTRATION CHAMBERS
---	EXISTING GAS MAIN
---	EXISTING OVERHEAD WIRES
---	EXISTING BELL LINE
---	EXISTING HYDRO
---	EXISTING STREETLIGHT POWER SUPPLY
---	EXISTING STREETLIGHT
---	EXISTING PARKING LOT SIGNAGE



NOTE:
THE POSITION OF ALL POLE LINES, CONDUITS,
WATERMANS, SEWERS AND OTHER
UNDERGROUND AND OVERGROUND UTILITIES AND
STRUCTURES IS NOT NECESSARILY SHOWN ON
THE CONTRACT DRAWINGS, AND WHERE SHOWN,
THE ACCURACY OF THE POSITION OF SUCH
UTILITIES AND STRUCTURES IS NOT GUARANTEED.
BEFORE STARTING WORK, DETERMINE THE EXACT
LOCATION OF ALL SUCH UTILITIES AND
STRUCTURES AND ASSUME ALL LIABILITY FOR
DAMAGE TO THEM.

NOT FOR
CONSTRUCTION

NO.	REVISION	DATE	BY
7	REVISED PER CITY COMMENTS	JUN 2023	MJH
6	ISSUED FOR GMP	JUN 14/23	MJH
5	REVISED PER CITY COMMENTS	MAR 03/23	MJH
4	DESIGN DOCUMENTS PACKAGE	NOV 15/22	MJH
3	REVISED PER CITY COMMENTS	NOV 08/22	MJH
2	REVISED PER CITY COMMENTS	APRIL 24/20	CJR
1	ISSUED FOR SITE PLAN APPROVAL	NOV 20/19	CJR

SCALE	FOR REVIEW ONLY
1:400	
1:400	
0 4 8 12 16	
DESIGN	MJH
CHECKED	CJR
DRAWN	MJH
CHECKED	CJR
APPROVED	JLS

NOVATECH
Engineers, Planners & Landscape Architects
Suite 200, 240 Michael Cowpland Drive
Ottawa, Ontario, Canada K2M 1P6
Telephone: (613) 254-9643
Facsimile: (613) 254-5867
Website: www.novatech-eng.com

LOCATION
4837 ALBION ROAD, CITY OF OTTAWA
HARD ROCK OTTAWA

DRAWING NAME
GENERAL PLAN OF SERVICES
NORTH-EAST DEVELOPMENT

PROJECT NO.: 116111
REV: REV #7
DRAWING NO.: 116111-GP4

C:\Users\116111\OneDrive\Documents\116111\GP-004\116111-GP-004.dwg, GRA-01, Jun 20, 2023, 2:25pm, dhamama

D07-12-19-0191 Plan No. 18864