

TREE PROTECTION NOTES

The following protection measures must be implemented for retained trees, both on site and on adjacent sites, prior to any tree removal or site works and maintained for the duration of construction on site:

- Under the guidance of a Landscape Architect or Certified Arborist, erect a fence at the critical root zone (CRZ) of trees where the CRZ is established as being 10 centimetres from the trunk of a tree for every centimetre of trunk diameter at breast height. The CRZ is calculated as DBH x 10cm. Refer to the Tree Protection Fence detail. See plan for fence location.
- When trees to be removed overlap with the CRZ of trees to be preserved: cut roots at the edge of the CRZ and grind down stumps after tree removals, do not pull out stumps. Ensure there is not root pulling or disturbance of the ground within the CRZ.
- If roots must be cut, roots 20mm or larger should be cut at right angles with clean, sharp horticultural tools without tearing, crushing, or pulling. Refer to City of Ottawa Specification S.P. F-8011 Tree Protection, Excavation of Root Zone.
- Hand work only where required within the CRZ, absolutely no machinery permitted.
- Do not place any material or equipment within the CRZ of any tree.
- Do not attach any signs, notices or posters to any tree.
- Do not disturb, raise or lower the existing grade within the CRZ without approval.
- Only tunnel or bore when digging within the CRZ of a tree.
- Do not damage the root system, trunk, or branches of any tree.
- Ensure that exhaust fumes from all equipment are directed away from any tree canopy.

REFER TO THE TREE PROTECTION NOTES, FOUND ON THE PLANS AND/OR REPORT.

A TEMPORARY FENCE SHALL BE ERRECTED TO PROTECT THE CRITICAL ROOT ZONE (CRZ). THE CRZ IS ESTABLISHED AS DBH x 10cm. SEE PLAN FOR LOCATION.

PRUNE BRANCHES TO REMOVE DAMAGED OR OBJECTIONABLE BRANCHES. DO NOT PRUNE LEADERS. DO NOT PRUNE MORE THAN 1/3 OF CROWN.

TREE PROTECTION TO REMAIN UNTIL THE SODDING/SEEDING PHASE OF THE PROJECT IS STARTED. REMOVE FENCE AT THIS TIME.

IF TREES ARE BEING AFFECTED BY CONSTRUCTION, A WATER AND FERTILIZING PROGRAM WILL NEED TO BE SET UP TO THE SATISFACTION OF THE LANDSCAPE ARCHITECT.

ATTACH FENCE WITH ZIP TIES USE 2x4 WOOD TOP RAIL TO SUPPORT LONG LENGTHS, AS REQUIRED.

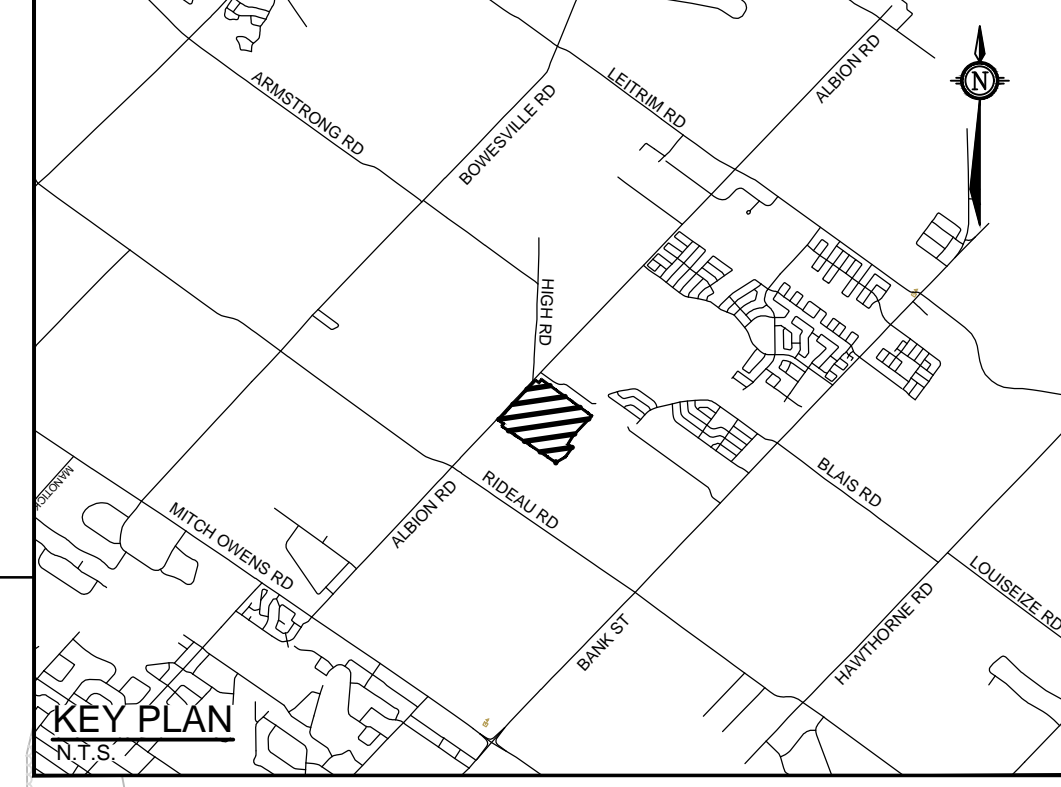
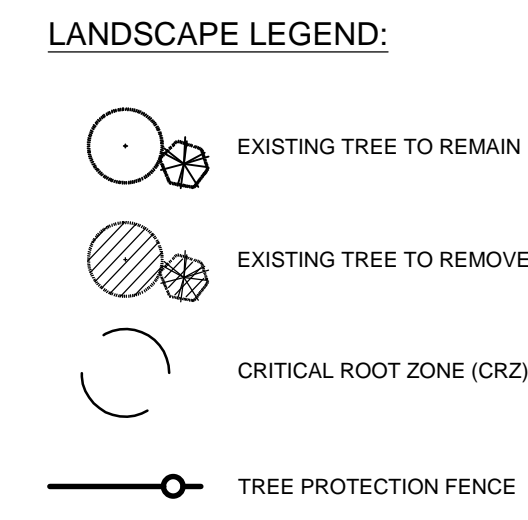
STEEL 7" BAR WITH PREDRILLED HOLES

ORANGE SNOW FENCE OR STANDARD PAGE WIRE FARM FENCE, 1000mm HT.

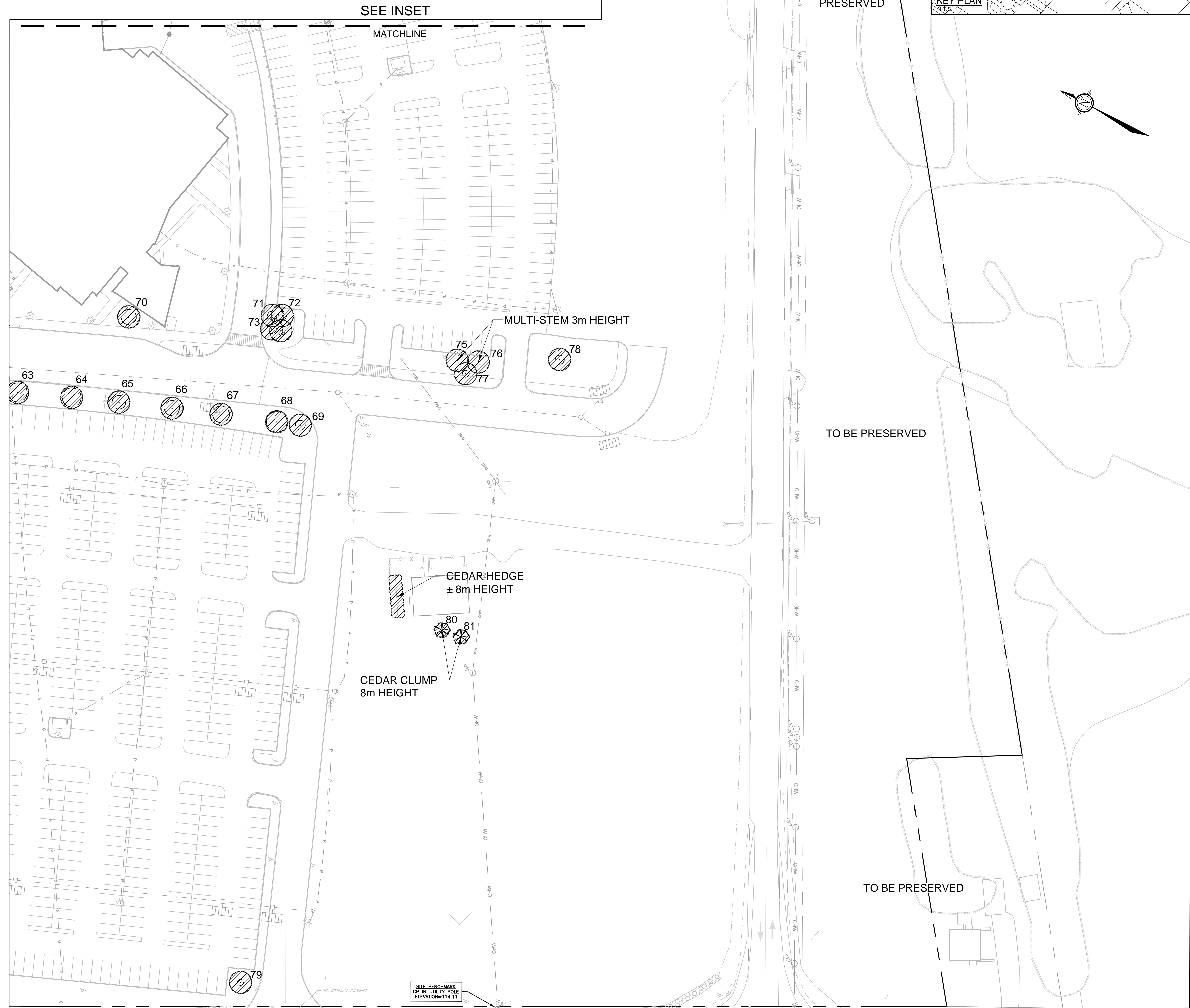
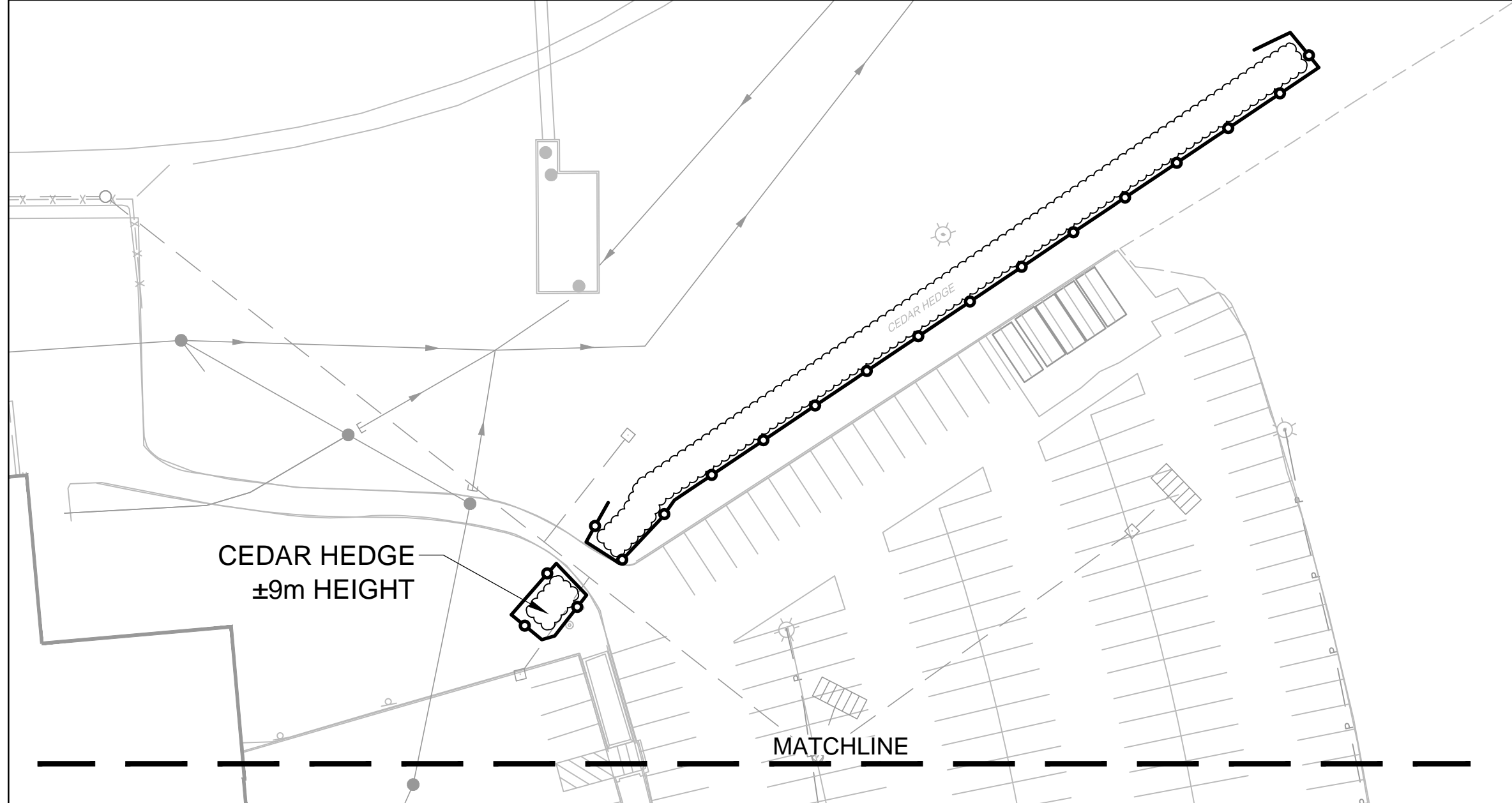
UNDISTURBED SOIL.

D1

No.	Botanical Name	Common Name	DBH (m)	CRZ (m)	Condition	Remarks	Recomm.
63	<i>Acer platanoides</i>	Norway Maple	0.25	2.50	G		Remove
64	<i>Acer platanoides</i>	Norway Maple	0.25	2.50	G		Remove
65	<i>Acer platanoides</i>	Norway Maple	0.18	1.80	G		Remove
66	<i>Acer platanoides</i>	Norway Maple	0.20	2.00	G		Remove
67	<i>Acer platanoides</i>	Norway Maple	0.22	2.20	G		Remove
68	<i>Acer platanoides</i>	Norway Maple	0.27	2.70	G		Remove
69	<i>Prunus x cistena</i>	Purple Leaf Sand Cherry	0.13	1.30	G		Remove
70	<i>Tilia cordata</i>	Linden	0.20	2.00	G		Remove
71	<i>Acer platanoides</i>	Norway Maple	0.12	1.20	G		Remove
72	<i>Acer platanoides</i>	Norway Maple	0.11	1.10	G		Remove
73	<i>Acer platanoides</i>	Norway Maple	0.12	1.20	F		Remove
74	<i>Acer platanoides</i>	Norway Maple	0.11	1.10	D	1/2 dead, fungus on trunk	Remove
75	<i>Amelanchier sp.</i>	Serviceberry			G	Multistem, 3m height	Remove
76	<i>Amelanchier sp.</i>	Serviceberry			G	Multistem, 3m height	Remove
77	<i>Betula papyrifera</i>	Paper Birch	0.09,0.06,0.04	0.9,0.6,0.4	G	Multistem	Remove
78	<i>Betula papyrifera</i>	Paper Birch	0.12,0.08	1.2,0.8	G	Multistem	Remove
79	<i>Prunus x cistena</i>	Purple Leaf Sand Cherry	0.08	0.80	P	Salt damage, black knot fungus	Remove
80	<i>Thuja occidentalis</i>	White Cedar			G	Clump, 8m height	Remove
81	<i>Thuja occidentalis</i>	White Cedar			G	Clump, 8m height	Remove



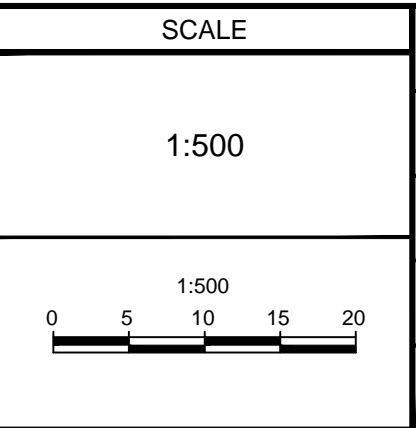
INSET



NOTE: THE POSITION OF ALL POLE LINES, CONDUITS, WATERMANS, SEWERS AND OTHER UNDERGROUND AND OVERGROUND UTILITIES AND STRUCTURES IS NOT NECESSARILY SHOWN ON THE CONTRACT DRAWINGS, AND WHERE SHOWN, THE ACCURACY OF THE POSITION OF SUCH UTILITIES AND STRUCTURES IS NOT GUARANTEED. BEFORE STARTING WORK, DETERMINE THE EXACT LOCATION OF ALL SUCH UTILITIES AND STRUCTURES AND ASSUME ALL LIABILITY FOR DAMAGE TO THEM.

NOT FOR CONSTRUCTION

No.	REVISION	DATE	BY



REVISION	DATE	BY	
4.	ISSUED FOR SITE PLAN APPLICATION	APR 24/20	RGJ
3.	ISSUED FOR COORDINATION	MAR 23/20	RGJ
2.	ISSUED FOR SITE PLAN APPLICATION	NOV 18/19	RGJ
1.	ISSUED FOR COORDINATION	NOV 5/19	RGJ

FOR REVIEW ONLY

KEWR/GJ
RGJ

KEW
RGJ

RGJ

LOCATION
4837 ALBION ROAD, CITY OF OTTAWA
RIDEAU CARLETON RACEWAY AND SLOTS EXPANSION

DRAWING NAME
**TREE CONSERVATION REPORT
DETAILED INVENTORY**

PROJECT No. 116111
REV # 4
DRAWING No. 116111-TCR3

NOVATECH
Engineers, Planners & Landscape Architects
Suite 200, 240 Michael Cowpland Drive
Ottawa, Ontario, Canada K2M 1P6
Telephone (613) 254-9643
Facsimile (613) 254-5867
Website www.novatech-eng.com