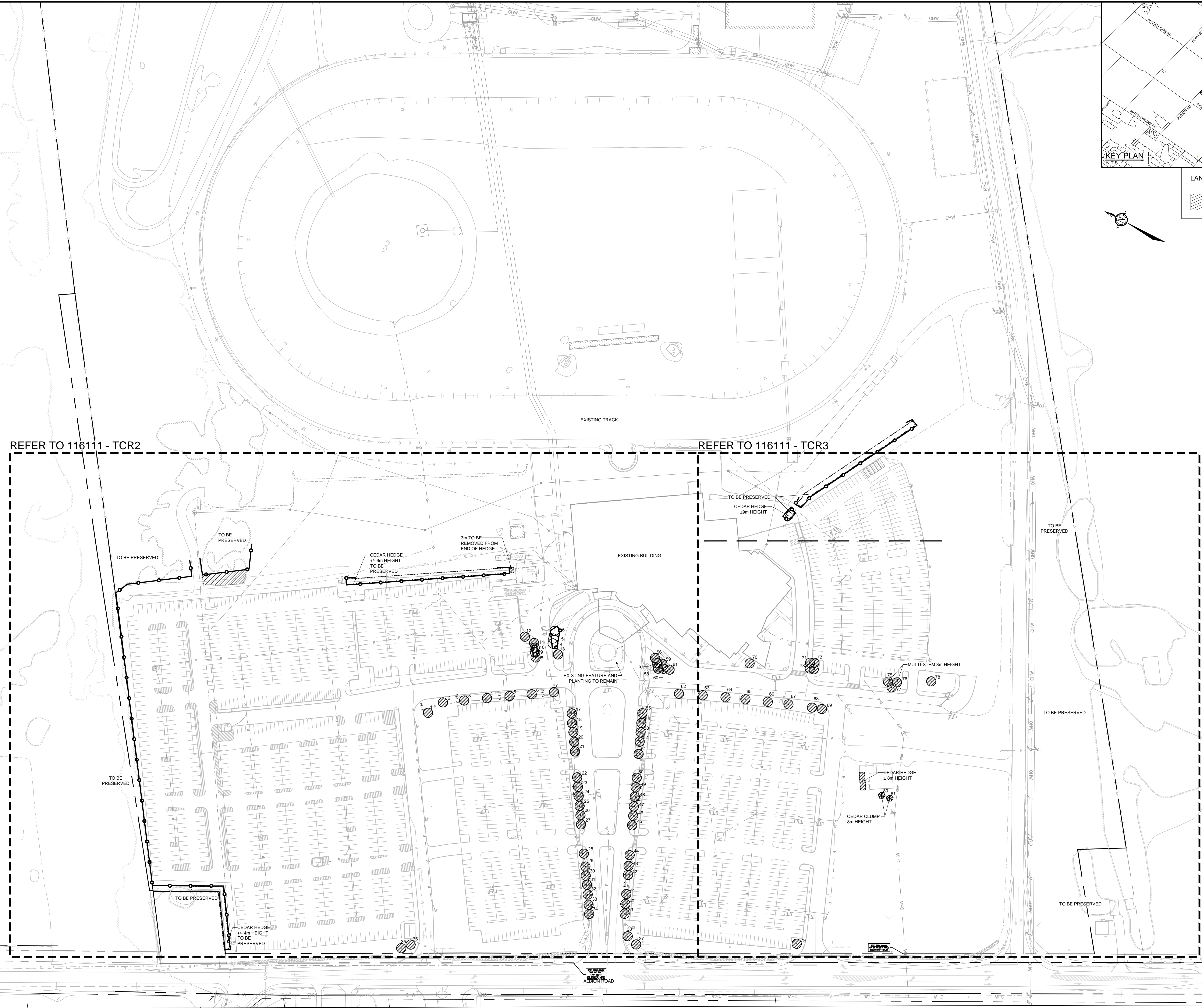
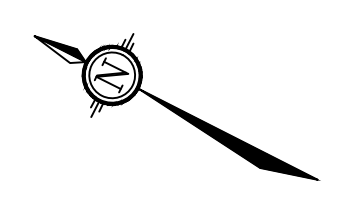


LANDSCAPE LEGEND:
 EXISTING VEGETATION TO REMOVE

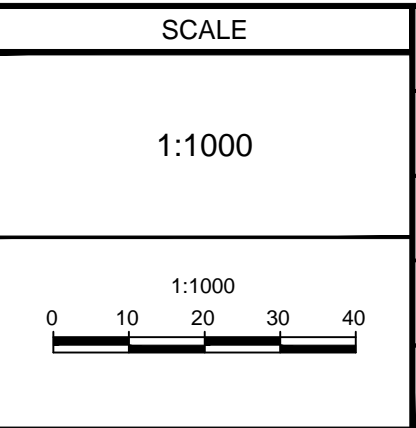


03/20/2011 11:52:02 Landscape/Plan/116111-TCR.dwg (TCR) Apr 22, 2020 - 2:41pm msh

NOTE:
 THE POSITION OF ALL POLE LINES, CONDUITS, WATERMANS, SEWERS AND OTHER UNDERGROUND AND OVERGROUND UTILITIES AND STRUCTURES IS NOT NECESSARILY SHOWN ON THE CONTRACT DRAWINGS, AND WHERE SHOWN, THE ACCURACY OF THE POSITION OF SUCH UTILITIES AND STRUCTURES IS NOT GUARANTEED. BEFORE STARTING WORK, DETERMINE THE EXACT LOCATION OF ALL SUCH UTILITIES AND STRUCTURES AND ASSUME ALL LIABILITY FOR DAMAGE TO THEM.

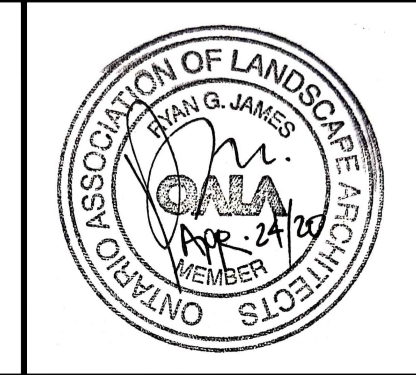
NOT FOR CONSTRUCTION

No.	REVISION	DATE	BY
4.	ISSUED FOR SITE PLAN APPLICATION	APR 24/20	RGJ
3.	ISSUED FOR COORDINATION	MAR 23/20	RGJ
2.	ISSUED FOR SITE PLAN APPLICATION	NOV 18/19	RGJ
1.	ISSUED FOR COORDINATION	NOV 5/19	RGJ



DESIGN	KEW/RGJ
CHECKED	RGJ
DRAWN	KEW
CHECKED	RGJ
APPROVED	RGJ

FOR REVIEW ONLY

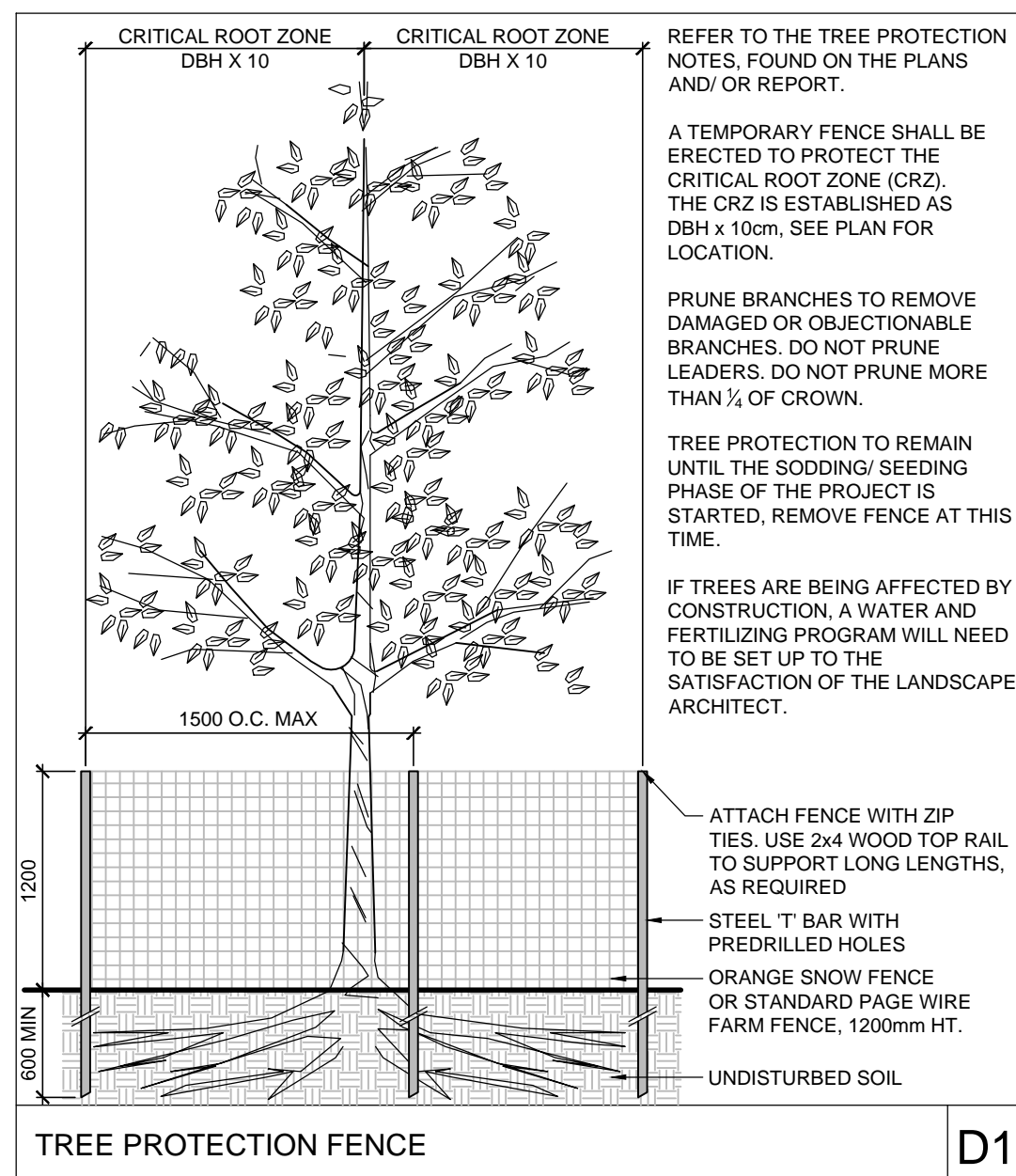


NOVATECH
 Engineers, Planners & Landscape Architects
 Suite 200, 240 Michael Cowland Drive
 Ottawa, Ontario, Canada K2M 1P6
 Telephone: (613) 254-9643
 Facsimile: (613) 254-5867
 Website: www.novatech-eng.com

LOCATION
 4837 ALBION ROAD, CITY OF OTTAWA
 RIDEAU CARLETON RACEWAY AND SLOTS EXPANSION

DRAWING NAME
**TREE CONSERVATION REPORT
 OVERALL PLAN**

PROJECT No. 116111
 REV # 4
 DRAWING No. 116111-TCR1



REFER TO THE TREE PROTECTION NOTES, FOUND ON THE PLANS AND/OR REPORT.

A TEMPORARY FENCE SHALL BE ERECTED TO PROTECT THE CRITICAL ROOT ZONE (CRZ). THE CRZ IS ESTABLISHED AS DBH x 10cm. SEE PLAN FOR LOCATION.

PRUNE BRANCHES TO REMOVE DAMAGED OR OBJECTIONABLE BRANCHES. DO NOT PRUNE LEADERS. DO NOT PRUNE MORE THAN 1/4 OF CROWN.

TREE PROTECTION TO REMAIN UNTIL THE SOODING/SEEDING PHASE OF THE PROJECT IS STARTED. REMOVE FENCE AT THIS TIME.

IF TREES ARE BEING AFFECTED BY CONSTRUCTION, A WATER AND FERTILIZING PROGRAM WILL NEED TO BE SET UP TO THE SATISFACTION OF THE LANDSCAPE ARCHITECT.

ATTACH FENCE WITH 3/8\"/>

STEEL T BAR WITH PREDRILLED HOLES

ORANGE SNOW FENCE OR STANDARD PAGE WIRE FARM FENCE, 1200mm HT.

UNDISTURBED SOIL.

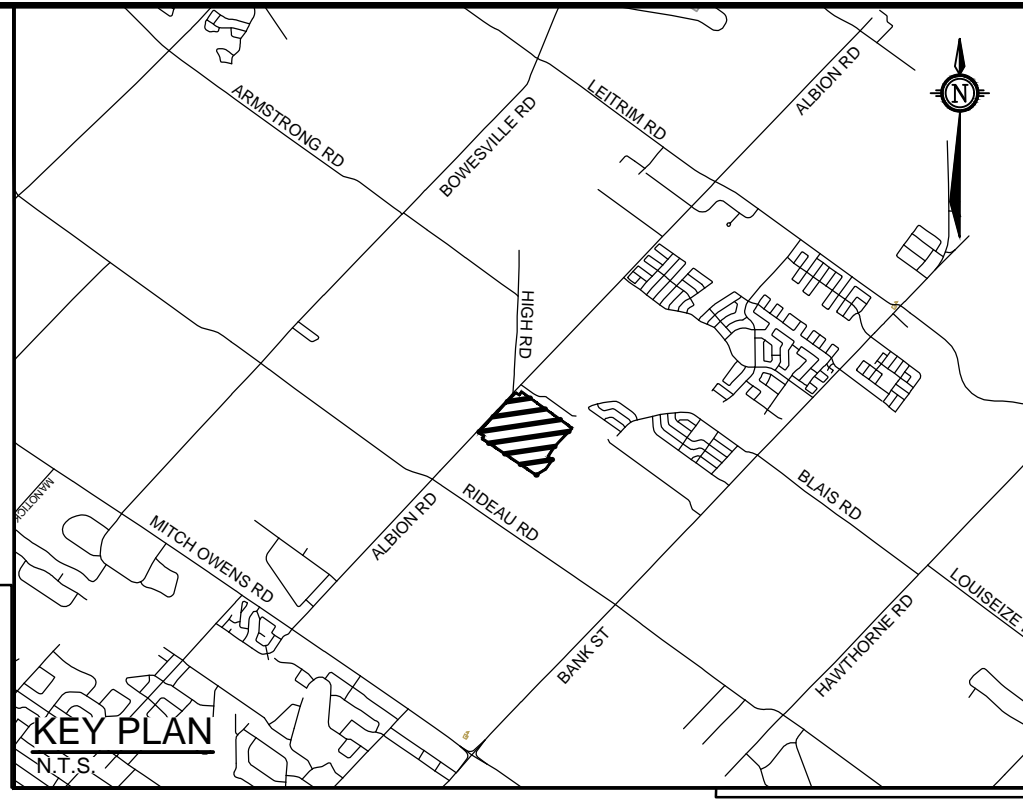
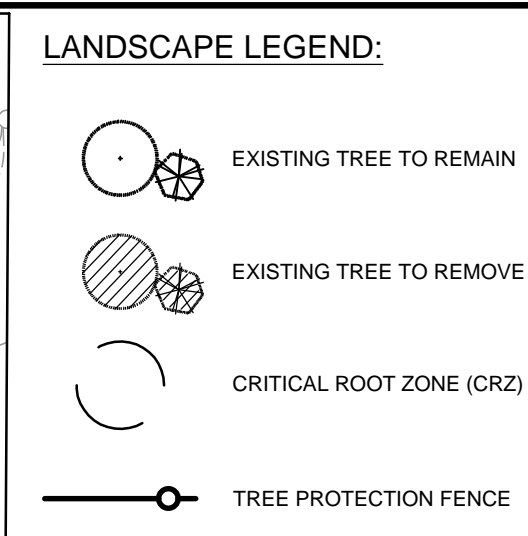
D1

TREE PROTECTION NOTES

The following protection measures must be implemented for retained trees, both on site and on adjacent sites, prior to any tree removal or site works and maintained for the duration of construction on site:

- Under the guidance of a Landscape Architect or Certified Arborist, erect a fence at the critical root zone (CRZ) of trees where the CRZ is established as being 10 centimetres from the trunk of a tree for every centimetre of trunk diameter at breast height. The CRZ is calculated as DBH x 10cm. Refer to the Tree Protection Fence detail. See plan for fence location.
- When trees to be removed overlap with the CRZ of trees to be preserved: cut roots at the edge of the CRZ and grind down stumps after tree removals, do not pull out stumps. Ensure there is no root pulling or disturbance of the ground within the CRZ.
- If roots must be cut, roots 20mm or larger should be cut at right angles with clean, sharp horticultural tools without tearing, crushing, or pulling. Refer to City of Ottawa Specification S.P. F-4011 Tree Protection, Excavation of Root Zone.
- Hand work only where required within the CRZ; absolutely no machinery permitted.
- Do not place any material or equipment within the CRZ of any tree.
- Do not attach any signs, notices or posters to any tree.
- Do not disturb, raise or lower the existing grade within the CRZ without approval.
- Only tunnel or bore when digging within the CRZ of a tree.
- Do not damage the root system, trunk, or branches of any tree.
- Do not transport logs from all equipment are directed away from any tree canopy.

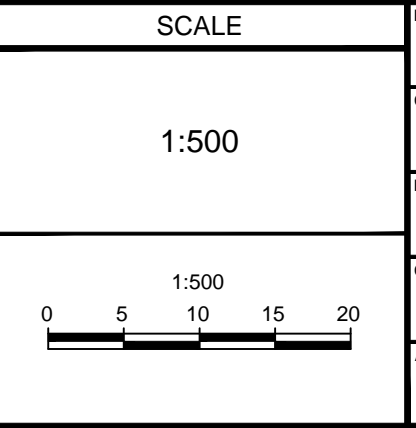
No.	Botanical Name	Common Name	DBH (m)	CRZ (m)	Condition	Remarks	Recomm.
1	Acer platanoides	Norway Maple	0.20	2.00	P	Dead leader, black spot, open seam on trunk	Remove
2	Acer platanoides	Norway Maple	0.22	2.20	F	Black spot	Remove
3	Acer platanoides	Norway Maple	0.20	2.00	P	Dead limbs at top, black spot	Remove
4	Acer platanoides	Norway Maple	0.22	2.20	F	Dead limbs at top, black spot	Remove
5	Acer platanoides	Norway Maple	0.18	1.80	F	Dead limbs at top, black spot	Remove
6	Acer platanoides	Norway Maple	0.10	1.00	P	1/2 canopy dead, black spot, suckers	Remove
7	Acer platanoides	Norway Maple	0.24	2.40	G		Remove
8	Prunus x cistena	Purple Leaf Sand Cherry	0.07	0.70	G	Memorial plaque	Remove
9	Sorbus aucuparia	Mountain Ash	0.05	0.50	G	Memorial plaque, dead limbs at top	Protect
10	Amelanchier sp.	Servicberry	0.02	0.20	G	Memorial plaque, stakes and guys - recent planting	Protect
11	Malus sp.	Crabapple	0.05	0.50	G	Memorial plaque	Remove
12	Amelanchier sp.	Servicberry	0.02	0.20	G	Memorial plaque, stakes and guys - recent planting	Remove
13	Acer platanoides	Norway Maple	0.15	1.50	F		Remove
14	Malus sp.	Crabapple	0.14	1.40	G		Protect
15	Malus sp.	Crabapple	0.12	1.20	G		Protect
16	Malus sp.	Crabapple	0.16	1.60	G		Protect
17	Acer platanoides	Norway Maple	0.20	2.00	G		Remove
18	Acer platanoides	Norway Maple	0.17	1.70	P	Dead top, 1/2 canopy, seam on trunk	Remove
19	Acer platanoides	Norway Maple	0.16	1.60	F	Defoliated early	Remove
20	Acer platanoides	Norway Maple	0.21	2.10	G		Remove
21	Acer platanoides	Norway Maple	0.14	1.40	G		Remove
22	Acer platanoides	Norway Maple	0.17	1.70	P	Dead limbs at top	Remove
23	Acer platanoides	Norway Maple	0.20	2.00	G		Remove
24	Acer platanoides	Norway Maple	0.16	1.60	G		Remove
25	Acer platanoides	Norway Maple	0.16	1.60	P	Defoliated early, dead limbs at top	Remove
26	Acer platanoides	Norway Maple	0.17	1.70	F		Remove
27	Acer platanoides	Norway Maple	0.19	1.90	G		Remove
28	Acer platanoides	Norway Maple	0.19	1.90	G		Remove
29	Acer platanoides	Norway Maple	0.16	1.60	G		Remove
30	Acer platanoides	Norway Maple	0.15	1.50	F	Defoliated early	Remove
31	Acer platanoides	Norway Maple	0.15	1.50	G		Remove
32	Acer platanoides	Norway Maple	0.15	1.50	F	Defoliated early	Remove
33	Acer platanoides	Norway Maple	0.08	0.80	G		Remove
34	Acer platanoides	Norway Maple	0.22	2.20	G		Remove
35	Malus sp.	Crabapple	0.08	0.80	G		Remove
36	Malus sp.	Crabapple	0.08	0.80	G		Remove
37	Malus sp.	Crabapple	0.13	1.30	G	Columnar form	Remove
38	Pinus strobus	White Pine	0.11	1.10	G	Columnar form	Remove
39	Acer platanoides	Norway Maple	0.20	2.00	G		Remove
40	Acer platanoides	Norway Maple	0.16	1.60	F	Defoliated early	Remove
41	Acer platanoides	Norway Maple	0.16	1.60	F	Defoliated early	Remove
42	Acer platanoides	Norway Maple	0.16	1.60	F	Defoliated early	Remove
43	Acer platanoides	Norway Maple	0.16	1.60	G		Remove
44	Acer platanoides	Norway Maple	0.18	1.80	F	Defoliated early	Remove
45	Acer platanoides	Norway Maple	0.18	1.80	G	Defoliated early	Remove
46	Acer platanoides	Norway Maple	0.18	1.80	G	Dead top, defoliated early	Remove
47	Acer platanoides	Norway Maple	0.18	1.80	G		Remove
48	Acer platanoides	Norway Maple	0.18	1.80	F	Defoliated early	Remove
49	Acer platanoides	Norway Maple	0.18	1.80	F	Major seam in trunk	Remove
50	Acer platanoides	Norway Maple	0.18	1.80	P	Dead limbs at top	Remove
51	Acer platanoides	Norway Maple	0.16	1.60	G		Remove
52	Acer platanoides	Norway Maple	0.20	2.00	F		Remove
53	Acer platanoides	Norway Maple	0.17	1.70	F		Remove
54	Acer platanoides	Norway Maple	0.21	2.10	G		Remove
55	Acer platanoides	Norway Maple	0.21	2.10	G		Remove
56	Acer platanoides	Norway Maple	0.15	1.50	G		Remove
57	Acer platanoides	Norway Maple	0.12	1.20	F	Some bark loose on trunk	Remove
58	Acer platanoides	Norway Maple	0.14	1.40	F	Bark loose on trunk	Remove
59	Acer platanoides	Norway Maple	0.13	1.30	F		Remove
60	Acer platanoides	Norway Maple	0.13	1.30	F		Remove
61	Acer platanoides	Norway Maple	0.15	1.50	G	Major seam in trunk	Remove
62	Acer platanoides	Norway Maple	0.25	2.50	G		Remove



NOT FOR CONSTRUCTION

NOTE: THE POSITION OF ALL POLE LINES, CONDUITS, WATERMANS, SEWERS AND OTHER UNDERGROUND AND OVERGROUND UTILITIES AND STRUCTURES IS NOT NECESSARILY SHOWN ON THE CONTRACT DRAWINGS, AND WHERE SHOWN, THE ACCURACY OF THE POSITION OF SUCH UTILITIES AND STRUCTURES IS NOT GUARANTEED. BEFORE STARTING WORK, DETERMINE THE EXACT LOCATION OF ALL SUCH UTILITIES AND STRUCTURES AND ASSUME ALL LIABILITY FOR DAMAGE TO THEM.

No.	REVISION	DATE	BY



CHKD BY	DATE

FOR REVIEW ONLY	DATE	BY

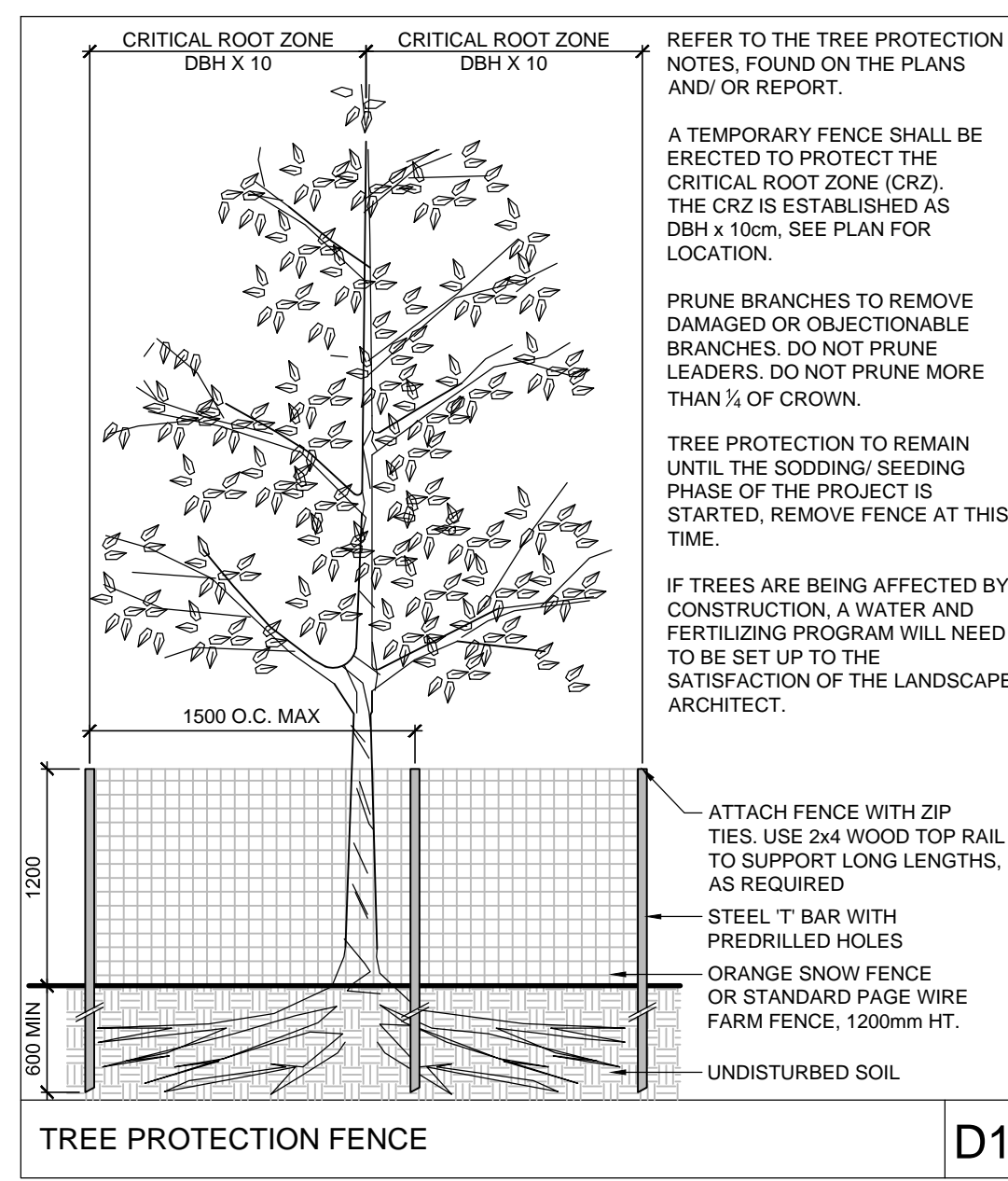
NOVATECH
 Engineers, Planners & Landscape Architects
 Suite 200, 240 Michael Cowpland Drive
 Ottawa, Ontario, Canada K2M 1P6
 Telephone: (613) 254-9643
 Facsimile: (613) 254-5867
 Website: www.novatech-eng.com

LOCATION: 4837 ALBION ROAD, CITY OF OTTAWA
 RIDEAU CARLETON RACEWAY AND SLOTS EXPANSION

DRAWING NAME: TREE CONSERVATION REPORT
 DETAILED INVENTORY

PROJECT NO.: 116111
 REV: REV # 4
 DRAWING NO.: 116111-TCR2

C:\Users\116111\OneDrive\Desktop\116111_TCR.dwg, TCR.dwg, TCR2, Apr 22, 2020 - 2:41pm, msh



TREE PROTECTION NOTES

The following protection measures must be implemented for retained trees, both on site and on adjacent sites, prior to any tree removal or site works and maintained for the duration of construction on site:

- Under the guidance of a Landscape Architect or Certified Arborist, erect a fence at the critical root zone (CRZ) of trees where the CRZ is established as being 10 centimetres from the trunk of a tree for every centimetre of trunk diameter at breast height. The CRZ is calculated as DBH x 10cm. Refer to the Tree Protection Fence detail. See plan for fence location.
- When trees to be removed overlap with the CRZ of trees to be preserved: cut roots at the edge of the CRZ and grind down stumps after tree removals, do not pull out stumps. Ensure there is not root pulling or disturbance of the ground within the CRZ.
- If roots must be cut, roots 20mm or larger should be cut at right angles with clean, sharp horticultural tools without tearing, crushing, or pulling. Refer to City of Ottawa Specification S.P. F-8011 Tree Protection, Excavation of Root Zone.
- Hand work only where required within the CRZ, absolutely no machinery permitted.
- Do not place any material or equipment within the CRZ of any tree.
- Do not attach any signs, notices or posters to any tree.
- Do not disturb, raise or lower the existing grade within the CRZ without approval.
- Only tunnel or bore when digging within the CRZ of a tree.
- Do not damage the root system, trunk, or branches of any tree.
- Ensure that exhaust fumes from all equipment are directed away from any tree canopy.

A TEMPORARY FENCE SHALL BE ERECTED TO PROTECT THE CRITICAL ROOT ZONE (CRZ). THE CRZ IS ESTABLISHED AS DBH x 10cm. SEE PLAN FOR LOCATION.

PRUNE BRANCHES TO REMOVE DAMAGED OR OBJECTIONABLE BRANCHES. DO NOT PRUNE LEADERS. DO NOT PRUNE MORE THAN 1/3 OF CROWN.

TREE PROTECTION TO REMAIN UNTIL THE SODDING/SEEDING PHASE OF THE PROJECT IS STARTED. REMOVE FENCE AT THIS TIME.

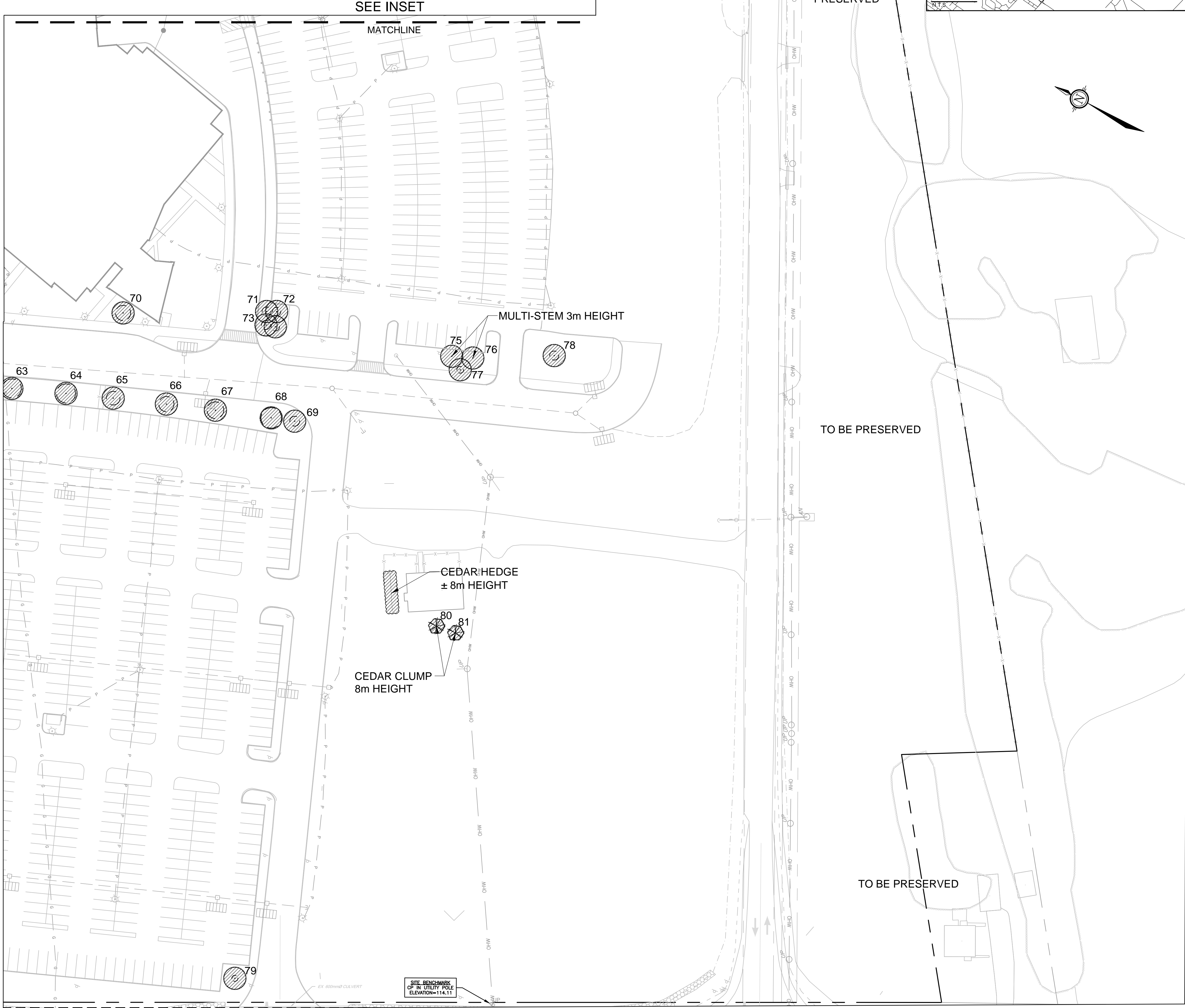
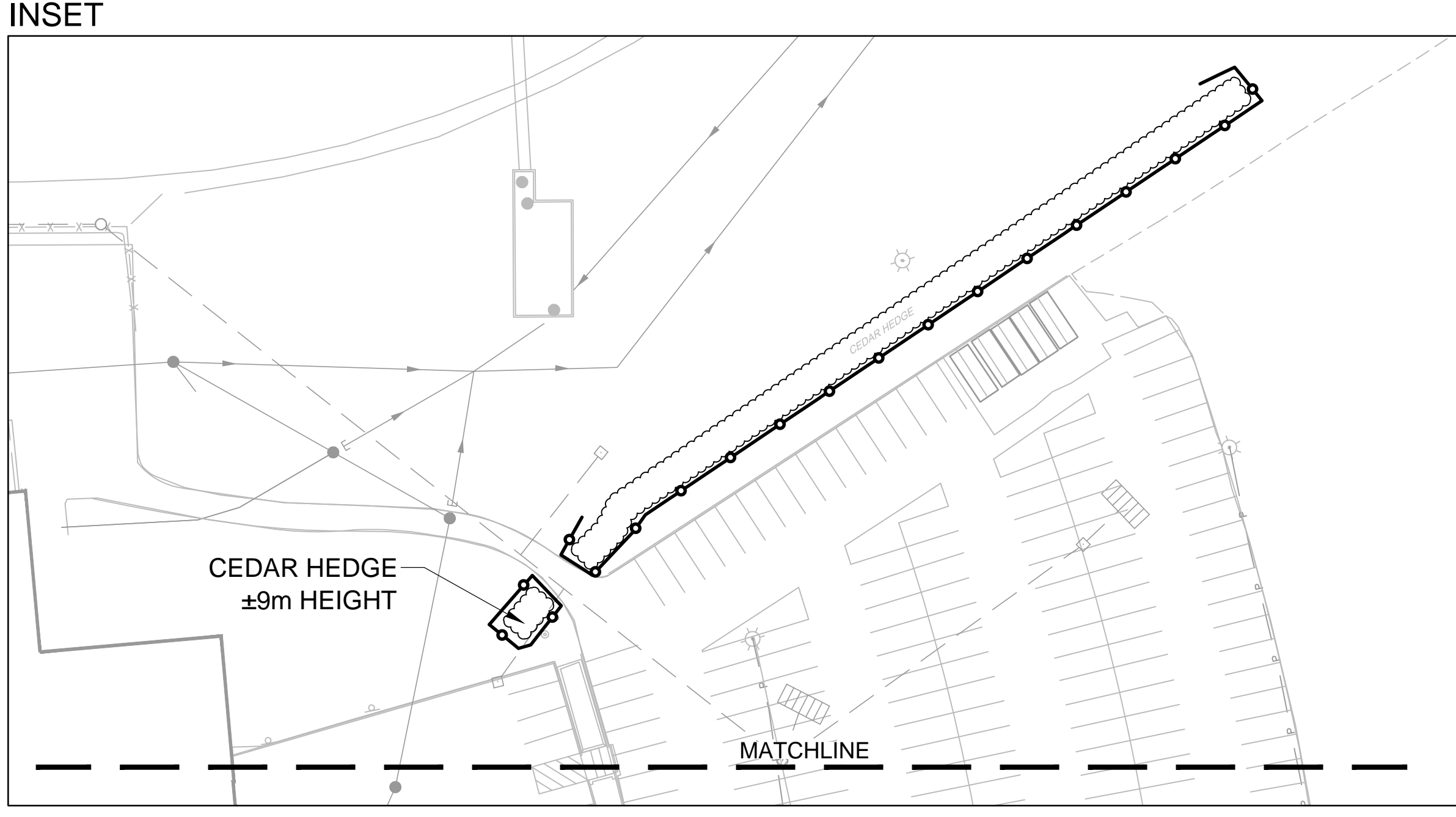
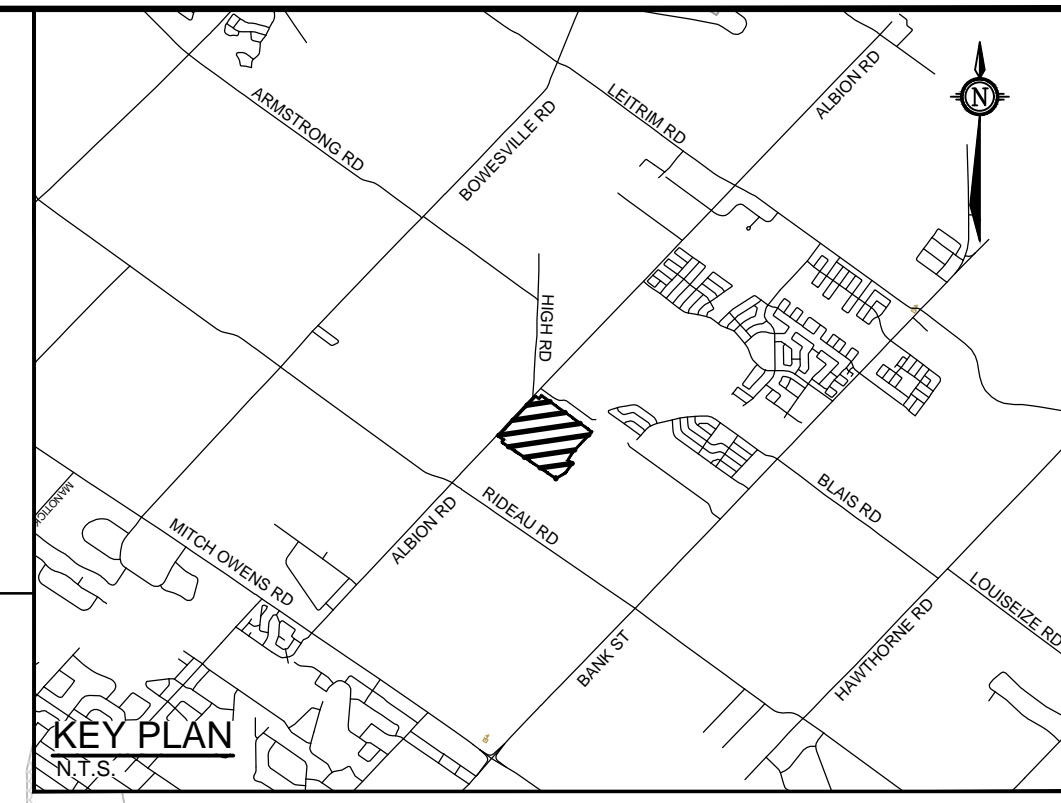
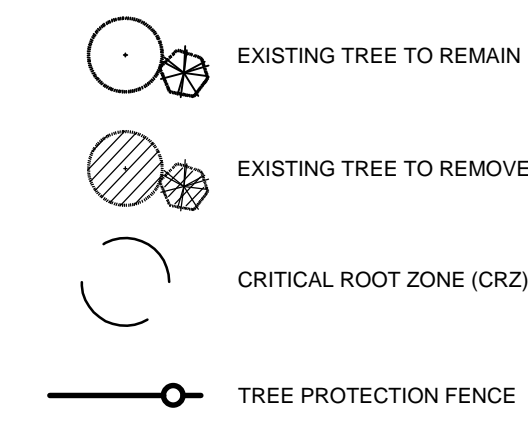
IF TREES ARE BEING AFFECTED BY CONSTRUCTION, A WATER AND FERTILIZING PROGRAM WILL NEED TO BE SET UP TO THE SATISFACTION OF THE LANDSCAPE ARCHITECT.

ATTACH FENCE WITH ZIP TIES USE 2x4 WOOD TOP RAIL TO SUPPORT LONG LENGTHS, AS REQUIRED.
STEEL 7" BAR WITH PREDRILLED HOLES
ORANGE SNOW FENCE OR STANDARD PAGE WIRE FARM FENCE, 1000mm HT.
UNDISTURBED SOIL.

D1

No.	Botanical Name	Common Name	DBH (m)	CRZ (m)	Condition	Remarks	Recomm.
63	<i>Acer platanoides</i>	Norway Maple	0.25	2.50	G		Remove
64	<i>Acer platanoides</i>	Norway Maple	0.25	2.50	G		Remove
65	<i>Acer platanoides</i>	Norway Maple	0.18	1.80	G		Remove
66	<i>Acer platanoides</i>	Norway Maple	0.20	2.00	G		Remove
67	<i>Acer platanoides</i>	Norway Maple	0.22	2.20	G		Remove
68	<i>Acer platanoides</i>	Norway Maple	0.27	2.70	G		Remove
69	<i>Prunus x cistena</i>	Purple Leaf Sand Cherry	0.13	1.30	G		Remove
70	<i>Tilia cordata</i>	Linden	0.20	2.00	G		Remove
71	<i>Acer platanoides</i>	Norway Maple	0.12	1.20	G		Remove
72	<i>Acer platanoides</i>	Norway Maple	0.11	1.10	G		Remove
73	<i>Acer platanoides</i>	Norway Maple	0.12	1.20	F		Remove
74	<i>Acer platanoides</i>	Norway Maple	0.11	1.10	D	1/2 dead, fungus on trunk	Remove
75	<i>Amelanchier sp.</i>	Serviceberry			G	Multistem, 3m height	Remove
76	<i>Amelanchier sp.</i>	Serviceberry			G	Multistem, 3m height	Remove
77	<i>Betula papyrifera</i>	Paper Birch	0.09,0.06,0.04	0.9,0.6,0.4	G	Multistem	Remove
78	<i>Betula papyrifera</i>	Paper Birch	0.12,0.08	1.2,0.8	G	Multistem	Remove
79	<i>Prunus x cistena</i>	Purple Leaf Sand Cherry	0.08	0.80	P	Salt damage, black knot fungus	Remove
80	<i>Thuja occidentalis</i>	White Cedar			G	Clump, 8m height	Remove
81	<i>Thuja occidentalis</i>	White Cedar			G	Clump, 8m height	Remove

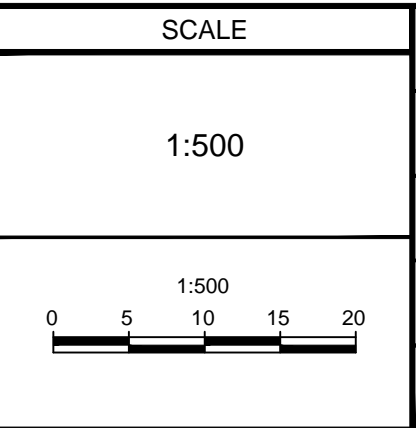
LANDSCAPE LEGEND:



NOTE: THE POSITION OF ALL POLE LINES, CONDUITS, WATERMANS, SEWERS AND OTHER UNDERGROUND AND OVERGROUND UTILITIES AND STRUCTURES IS NOT NECESSARILY SHOWN ON THE CONTRACT DRAWINGS, AND WHERE SHOWN, THE ACCURACY OF THE POSITION OF SUCH UTILITIES AND STRUCTURES IS NOT GUARANTEED. BEFORE STARTING WORK, DETERMINE THE EXACT LOCATION OF ALL SUCH UTILITIES AND STRUCTURES AND ASSUME ALL LIABILITY FOR DAMAGE TO THEM.

NOT FOR CONSTRUCTION

No.	REVISION	DATE	BY



REVISION	DATE	BY

FOR REVIEW ONLY

KEWR/GJ
RGJ
KEW
RGJ
RGJ

NOVATECH
Engineers, Planners & Landscape Architects
Suite 200, 240 Michael Cowpland Drive
Ottawa, Ontario, Canada K2M 1P6
Telephone: (613) 254-9643
Facsimile: (613) 254-5867
Website: www.novatech-eng.com

LOCATION: 4837 ALBION ROAD, CITY OF OTTAWA
RIDEAU CARLETON RACEWAY AND SLOTS EXPANSION

DRAWING NAME: TREE CONSERVATION REPORT
DETAILED INVENTORY

PROJECT No.: 116111
REV: 116111
REV # 4
DRAWING No.: 116111-TCR3