

Allison Hamlin

ALLISON HAMLIN
MANAGER (A), DEVELOPMENT REVIEW WEST
PLANNING, REAL ESTATE & ECONOMIC DEVELOPMENT
DEPARTMENT, CITY OF OTTAWA

APPROVED
 By Allison Hamlin at 1:16 pm, Aug 03, 2023

- | | |
|---|--|
| <p>MP-01 ALUMINUM COMPOSITE METAL (ACM) RAINSCREEN PANEL ASSEMBLY - SEE ELEVATIONS FOR COLOR & ORIENTATION. FINAL COLOR TBD. COLOR SAMPLES TO BE SUBMITTED TO ARCHITECT & DESIGNER FOR REVIEW</p> <p>MP-02 INSULATED METAL PANEL (IMP) ASSEMBLY - VERTICAL ORIENTATION U.N.O. COLOR MAY VARY. SEE ELEVATIONS. FINAL COLOR TBD. COLOR SAMPLES TO BE SUBMITTED TO ARCHITECT & DESIGNER FOR REVIEW</p> <p>MP-03 INSULATED METAL PANEL (IMP) ASSEMBLY - VERTICAL ORIENTATION U.N.O. COLOR MAY VARY. SEE ELEVATIONS. FINAL COLOR TBD. COLOR SAMPLES TO BE SUBMITTED TO ARCHITECT & DESIGNER FOR REVIEW</p> <p>CP-01 WOOD LOOK COMPOSITE PANEL ASSEMBLY - FINAL COLOR TBD. COLOR SAMPLES TO BE SUBMITTED TO ARCHITECT & DESIGNER FOR REVIEW</p> <p>VG-01 VINYL GRAPHIC - TRANSLUCENT SELF ADHERED VINYL GRAPHIC APPLIED TO INSIDE FACE OF GLASS. GRAPHIC IMAGE PROVIDED BY OWNER</p> | <p>DM-01 DECORATIVE METAL - PERFORATED METAL PANEL SCREEN. B.O.D. ZANNER. GRAPHIC IMAGE PROVIDED BY OWNER</p> <p>MT-03 ALUMINUM COMPOSITE METAL (ACM) RAINSCREEN PANEL ASSEMBLY W/ STONE LOOK - SEE ELEVATIONS FOR COLOR & ORIENTATION. FINAL COLOR TBD. COLOR SAMPLES TO BE SUBMITTED TO ARCHITECT & DESIGNER FOR REVIEW</p> <p>MV-02 MASONRY VENEER - STACKED STONE W/ SOLID STONE CAP. LEDGESTONE FINISH. STYLE, FINAL COLOR TBD. SAMPLES TO BE SUBMITTED TO ARCHITECT & DESIGNER FOR REVIEW</p> <p>RS-01 ROOF SCREEN - CS GROUP. METAL VISION SCREEN B.O.D. VEST-A-CIDE SERIES. FINAL COLOR TBD. SAMPLES TO BE SUBMITTED TO ARCHITECT & DESIGNER FOR REVIEW</p> <p>CC-01 COLUMN COVER - DAVIS INC. PRE-FAB STAINLESS STEEL COLUMN COVER</p> |
|---|--|

YALLOWEGA
architecture inc.

157 Slipac St, Greater Sudbury,
ON P3B 3E5
+1 705-806-4643

SNC-LAVALIN

1600 Carling Ave, Ottawa, ON K1Y 1B2
+1 800-397-2458

EXTERIOR MATERIALS LEGEND

SCALE
N.T.S.

sense engineering

60 Ryeburn Dr, Gloucester, ON K1V 1H5
+1 613-884-4785

NOVATECH

2540 Sheffield Rd, Ottawa, ON K1B 3V6
+1 613-749-8191

Hard Rock CASINO

Hard Rock Ottawa Hotel & Casino SP Agreement

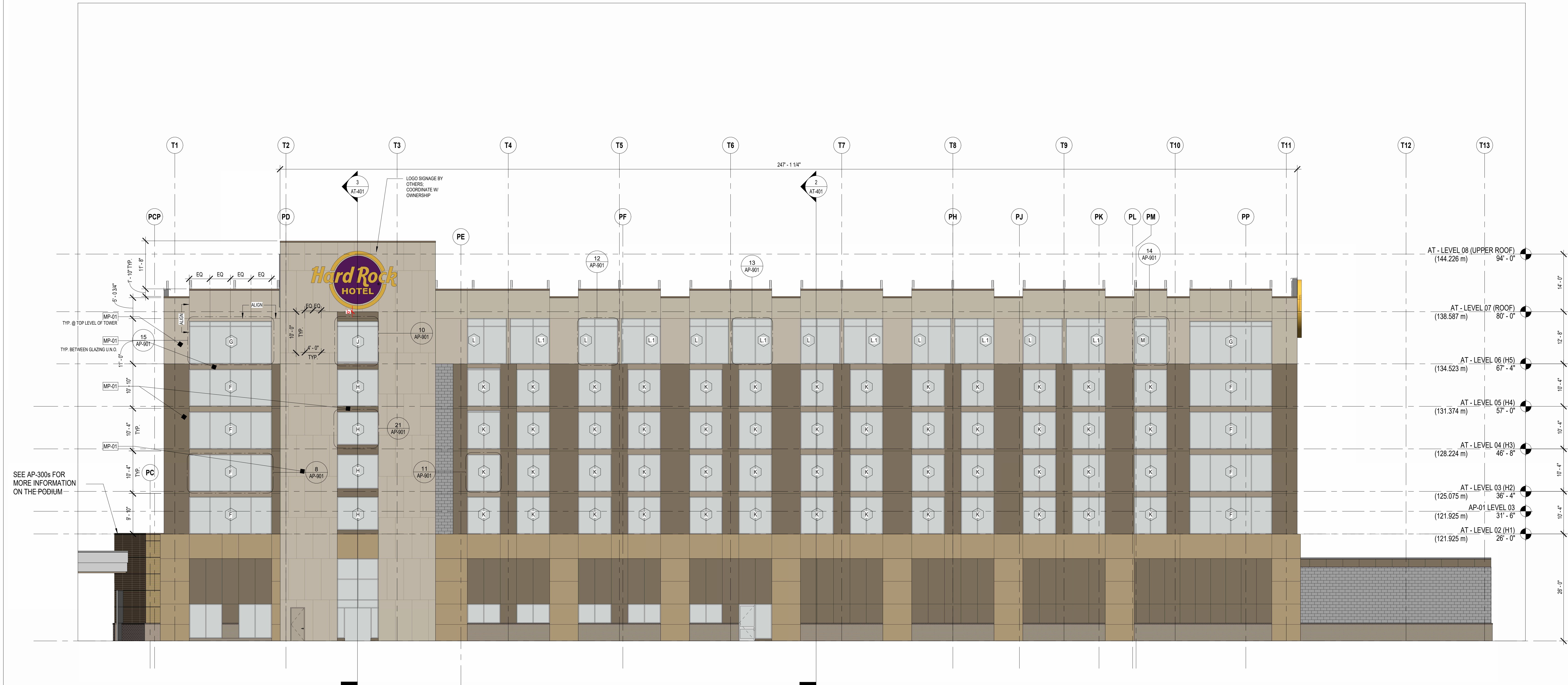
4837 ALBION RD,
GLOUCESTER, OTTAWA
ONTARIO, CANADA

REVISED PER CITY COMMENTS

| SUBMISSIONS | | |
|-------------|--------------------|-------------------------------|
| NO. | DATE | DESCRIPTION |
| 9 | July 20th 2023 | REVISED PER CITY COMMENTS |
| 8 | July 14th 2023 | ISSUED FOR PERMIT |
| 7 | June 20th 2023 | REVISED PER CITY COMMENTS |
| 6 | June 14th 2023 | ISSUED FOR CIMP |
| 5 | March 3rd 2023 | REVISED PER CITY COMMENTS |
| 4 | November 15th 2022 | DESIGN DOCUMENTS PACKAGE |
| 3 | November 8th 2022 | REVISED PER CITY COMMENTS |
| 2 | April 24th 2020 | REVISED PER CITY COMMENTS |
| 1 | November 20th 2019 | ISSUED FOR SITE PLAN APPROVAL |

DRAWING TITLE:
Hotel Elevations 1

| | |
|--------------------|----------------------|
| DRAWN BY: MS | DATE: July 25th 2023 |
| REVIEWED BY: RY | |
| SCALE: | DRAWING NO. SP-004-9 |
| PROJECT NO. 22-001 | |



SEE AP-300s FOR MORE INFORMATION ON THE PODIUM

WEST TOWER ELEVATION

SCALE
3/32" = 1'-0"

1