

POINT #	NORTHING	EASTING
019190715	500943.34	37968.72
0191981649	500789.87	37245.05
0191987000	500770.99	37426.96
0191987001	500776.46	37368.82

CONCESSION	LOT	PIN	AREA (SQ. M)
Part of 23 and 24	1	04328-0500	30774.0
Part of 23 and 24	2	04328-0500	2863.3
Part of 23 and 24	3	04328-0500	2716.8
Part of 23 and 24	4	04328-0500	361.4
Part of 23 and 24	5	04328-0500	743.9
Part of 23 and 24	6	04328-0500	517.4
Part of 23 and 24	7	04328-0500	1070.7
Part of 23 and 24	8	04328-0500	1241.0
Part of 23 and 24	9	04328-0500	222.2
Part of 23 and 24	10	04328-0500	144.0
Part of 23 and 24	11	04328-0500	1755.6
Part of 23 and 24	12	04328-0500	1813.9
Part of 23 and 24	13	04328-0500	285.2
Part of 23 and 24	14	04328-0500	153.9
Part of 23 and 24	15	04328-0500	383.2
Part of 23 and 24	16	04328-0500	2537.6
Part of 23 and 24	17	04328-0500	1427.4
Part of 23 and 24	18	04328-0500	292.3
Part of 23 and 24	19	04328-0500	226.7
Part of 23 and 24	20	04328-0500	370.3
Part of 23 and 24	21	04328-0500	338.5
Part of 23 and 24	22	04328-0500	46.4
Part of 23 and 24	23	04328-0500	24.2
Part of 23 and 24	24	04328-0500	7.6
Part of 23 and 24	25	04328-0500	25.0
Part of 23 and 24	26	04328-0500	54.9
Part of 23 and 24	27	04328-0500	26.5

Notes & Legend

- Survey Monument Planted
- Survey Monument Found
- Standard Iron Bar
- Short Standard Iron Bar
- Iron Bar
- Poured Iron Bar
- Brass Nail
- Concrete Pin
- Stake & Washer
- Iron Pipe
- Wire
- Measured
- Original Subdivision
- Plan 4R-15731
- Plan 4R-31090
- Plan 4R-10708
- Plan 4R-8247
- Color Hedge
- Utility Pole
- Light Standard
- Terminal Box (Bell)
- Terminal Box (Power)
- Handhole (Power)
- Rail Fence
- Board Fence

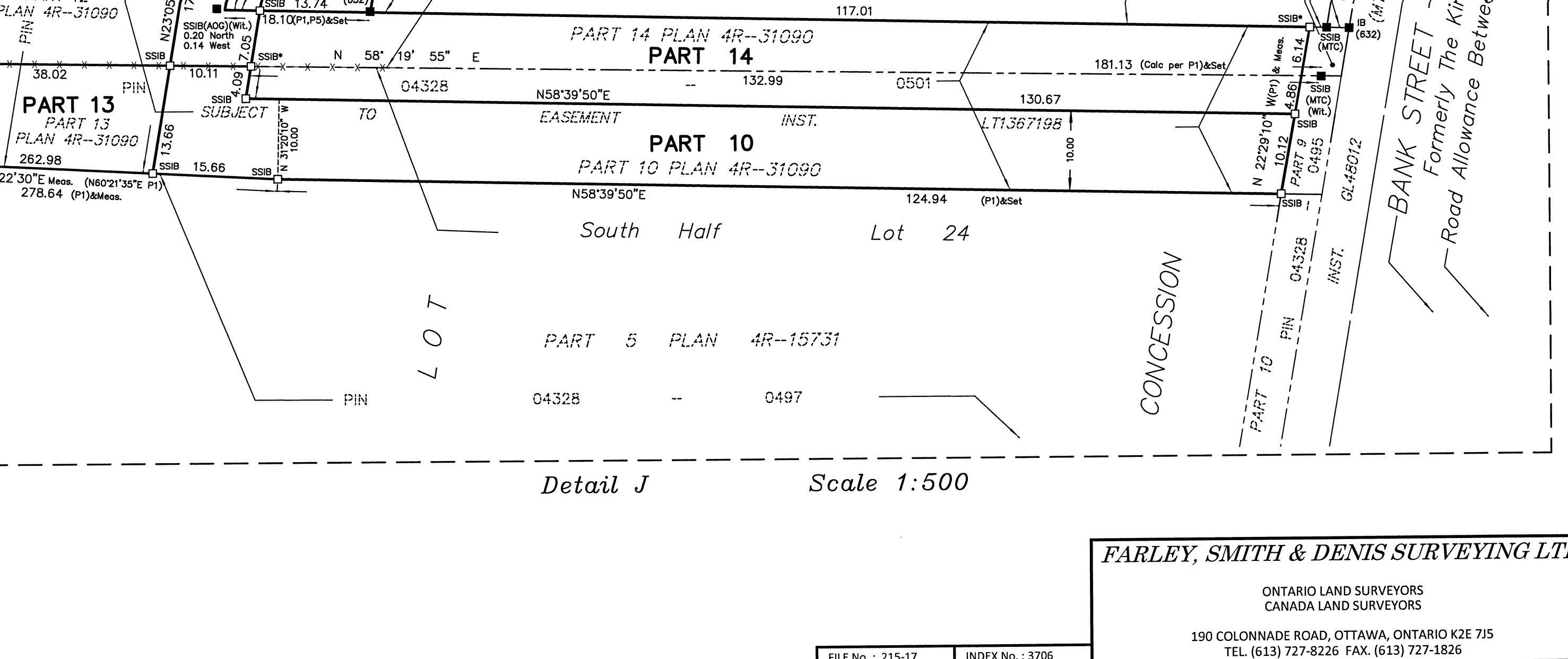
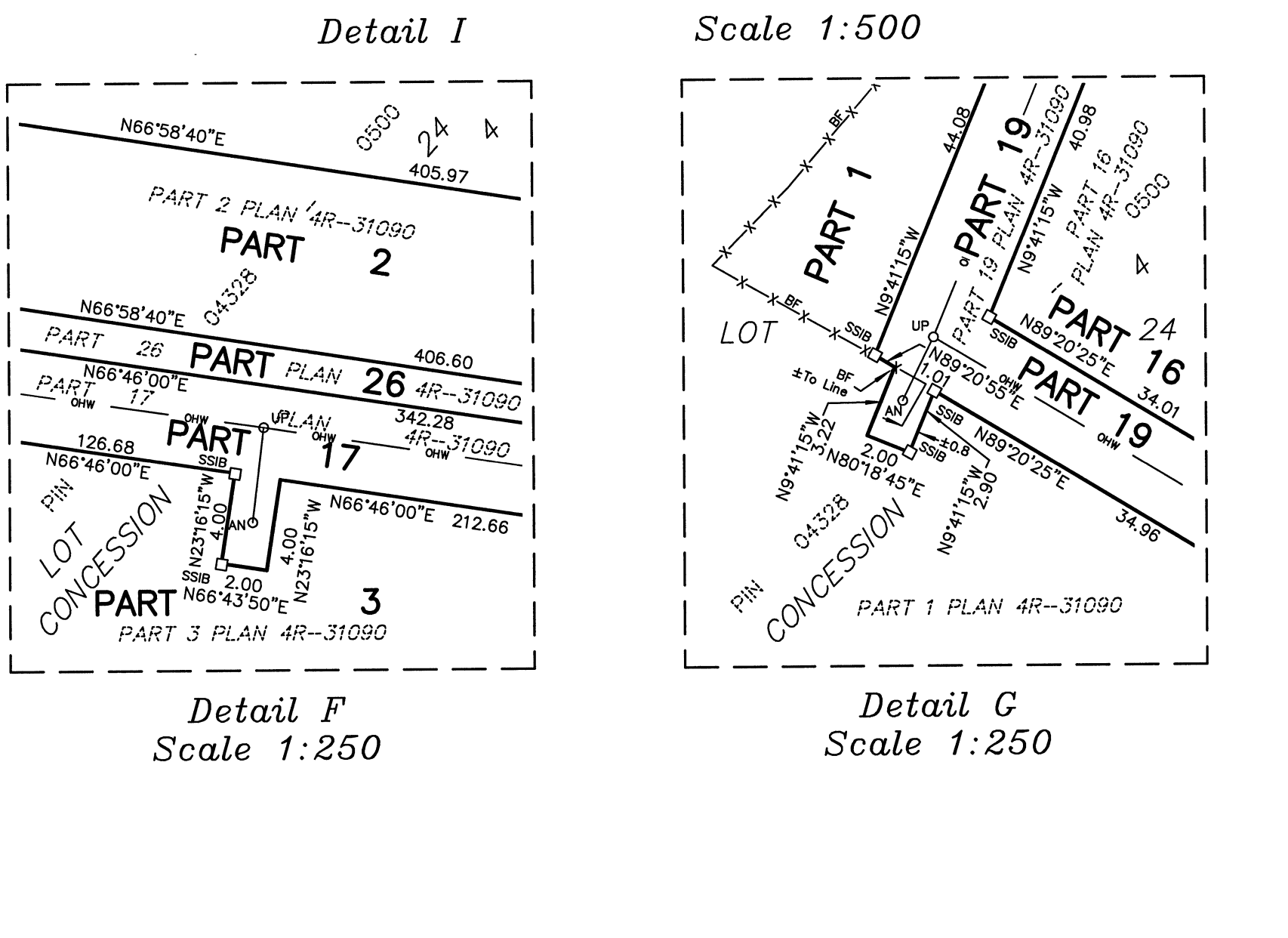
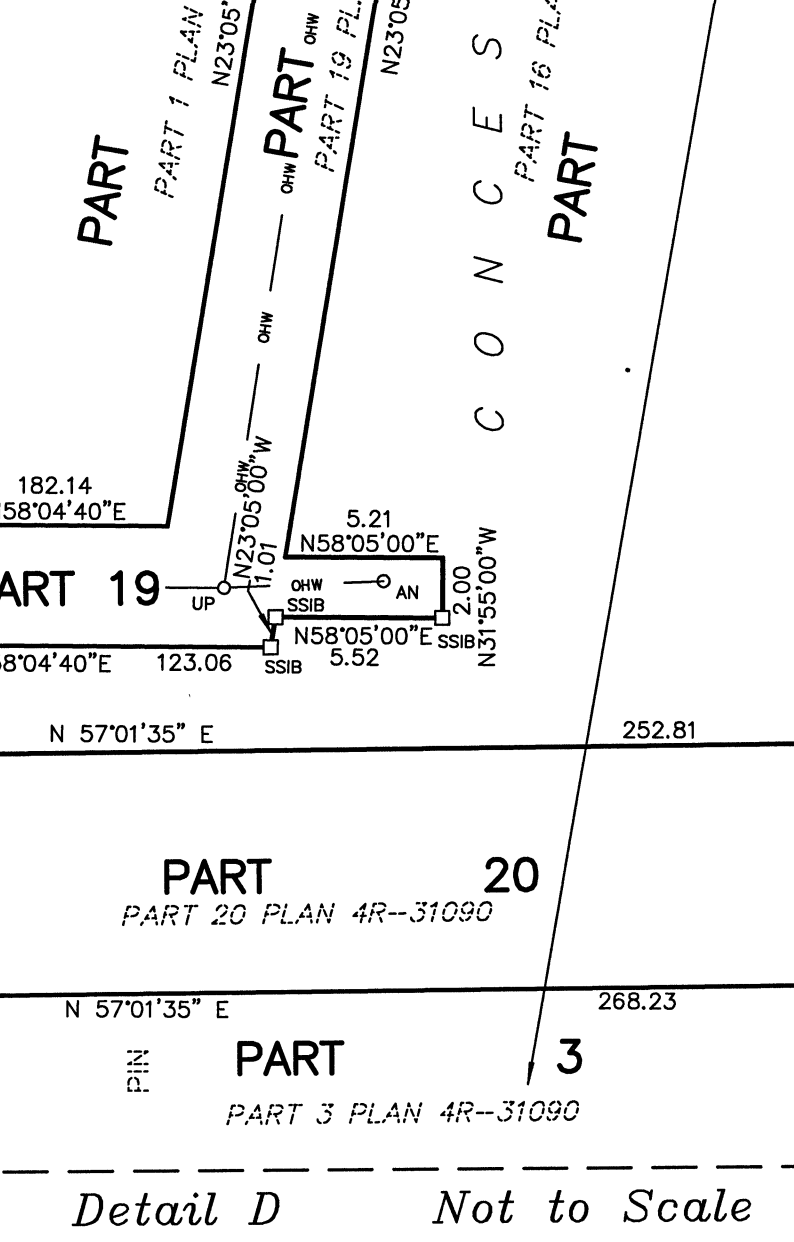
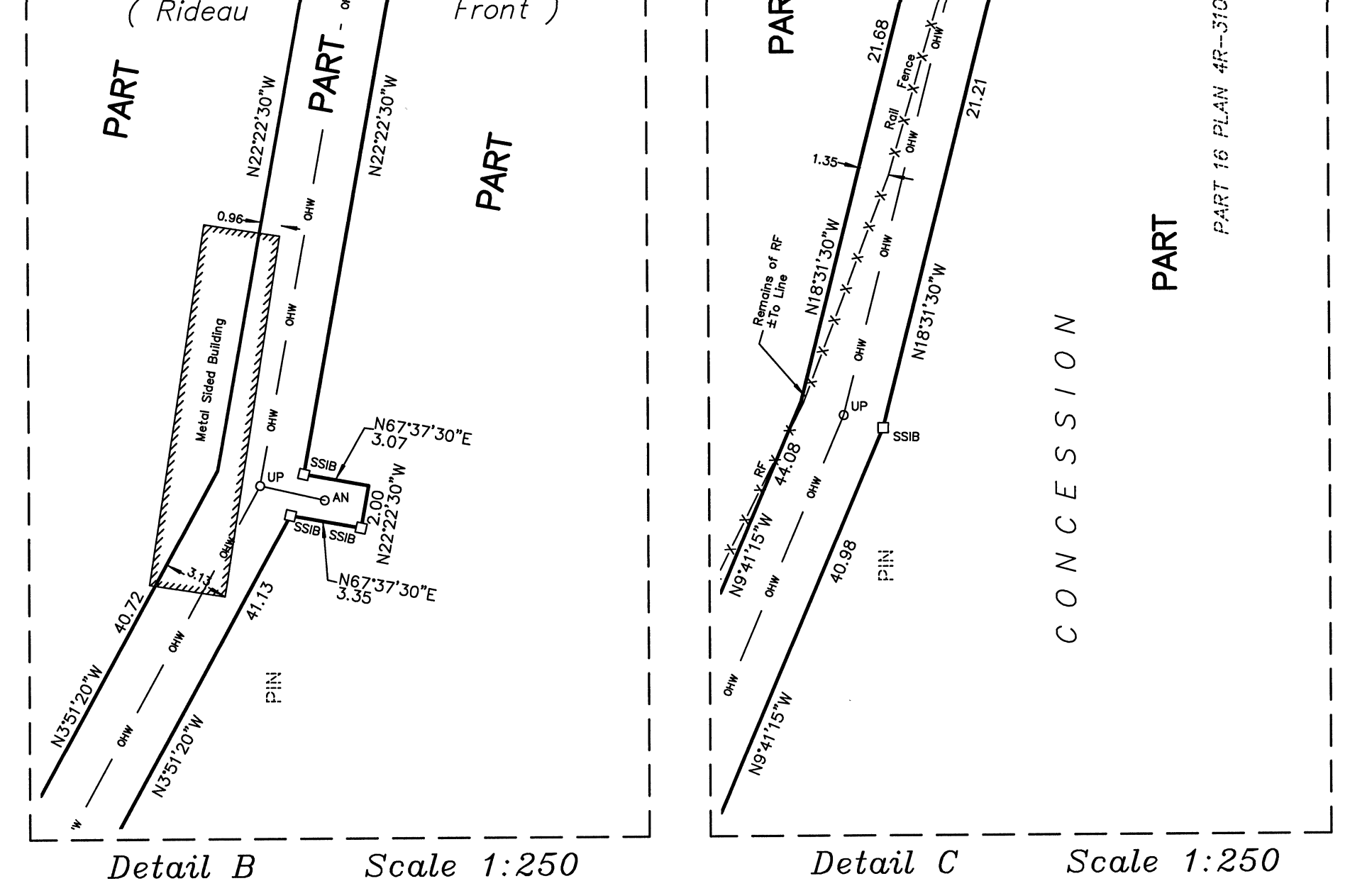
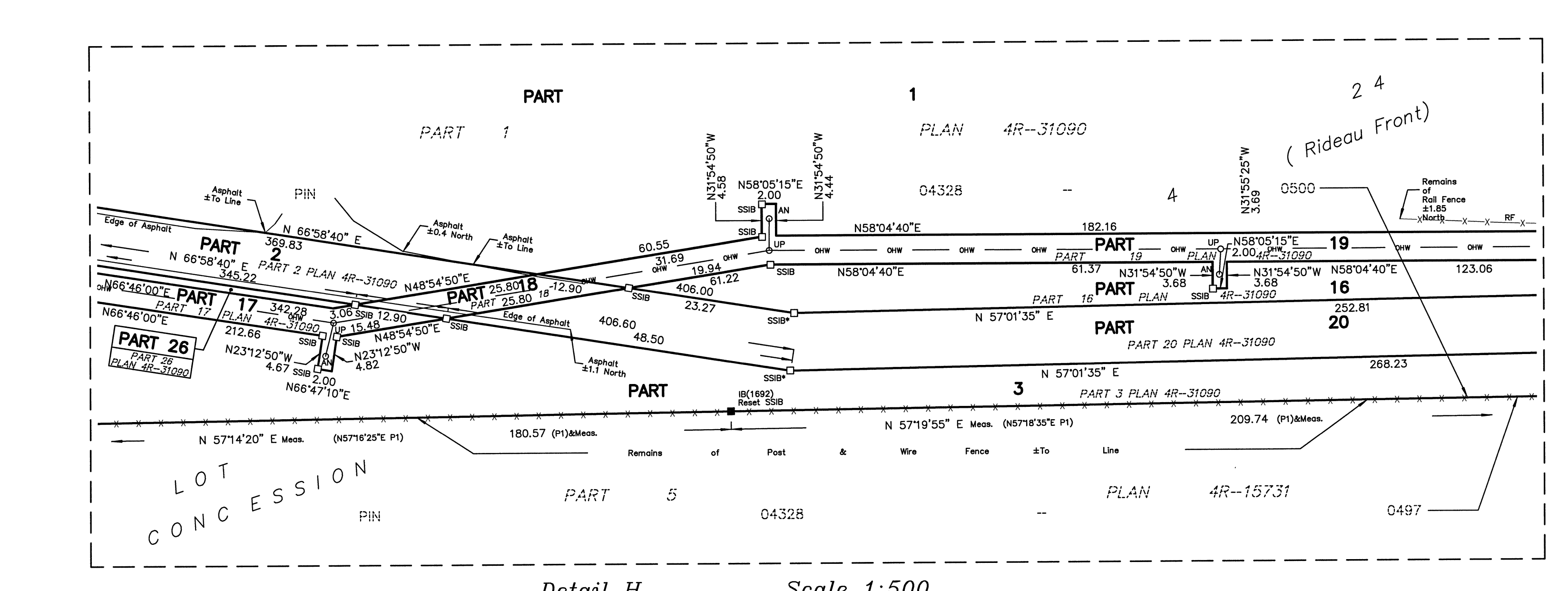
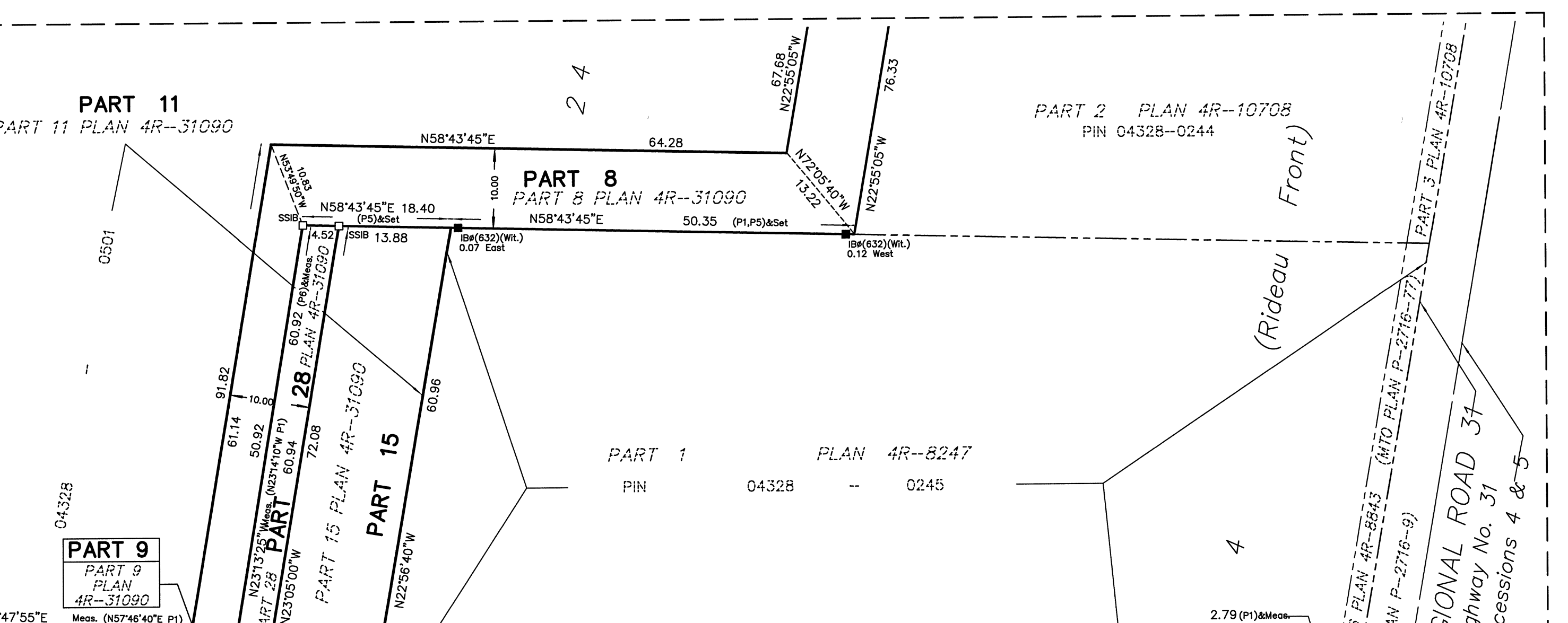
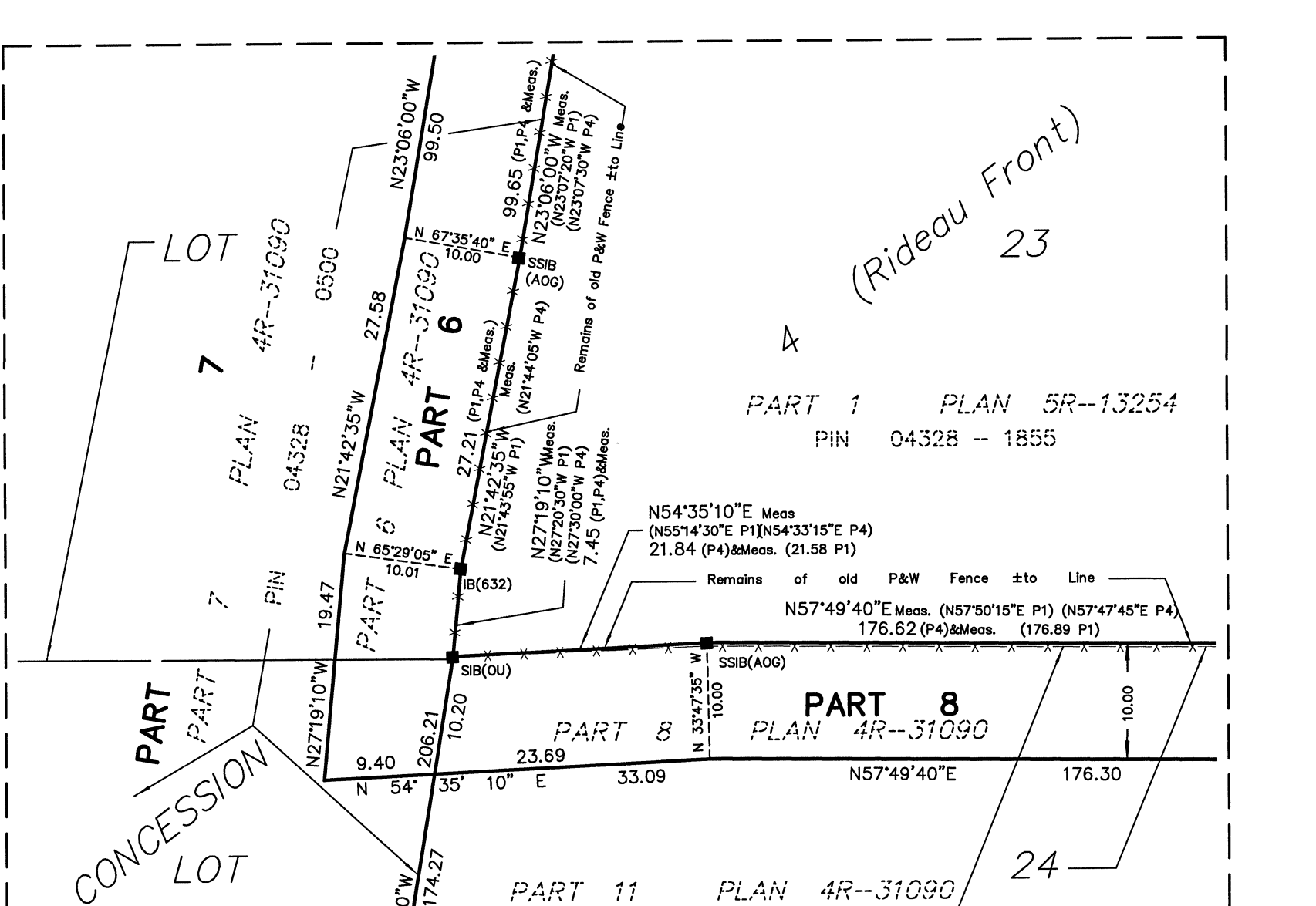
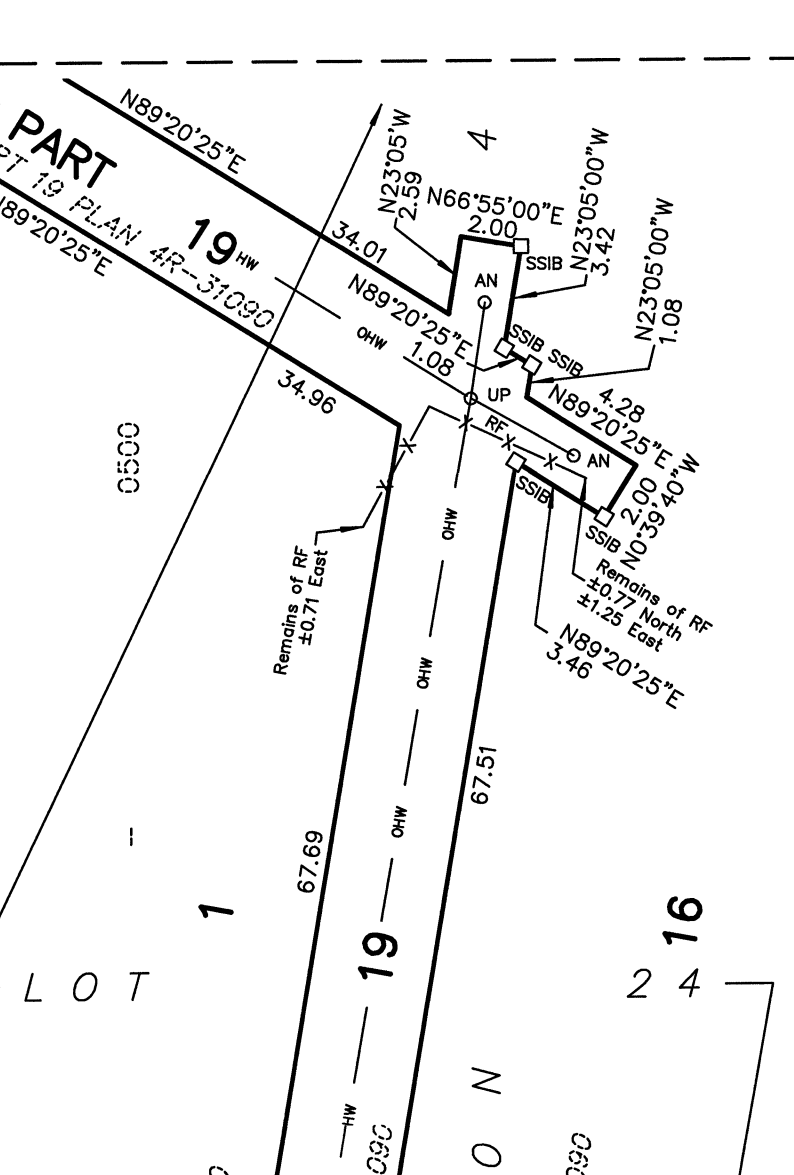
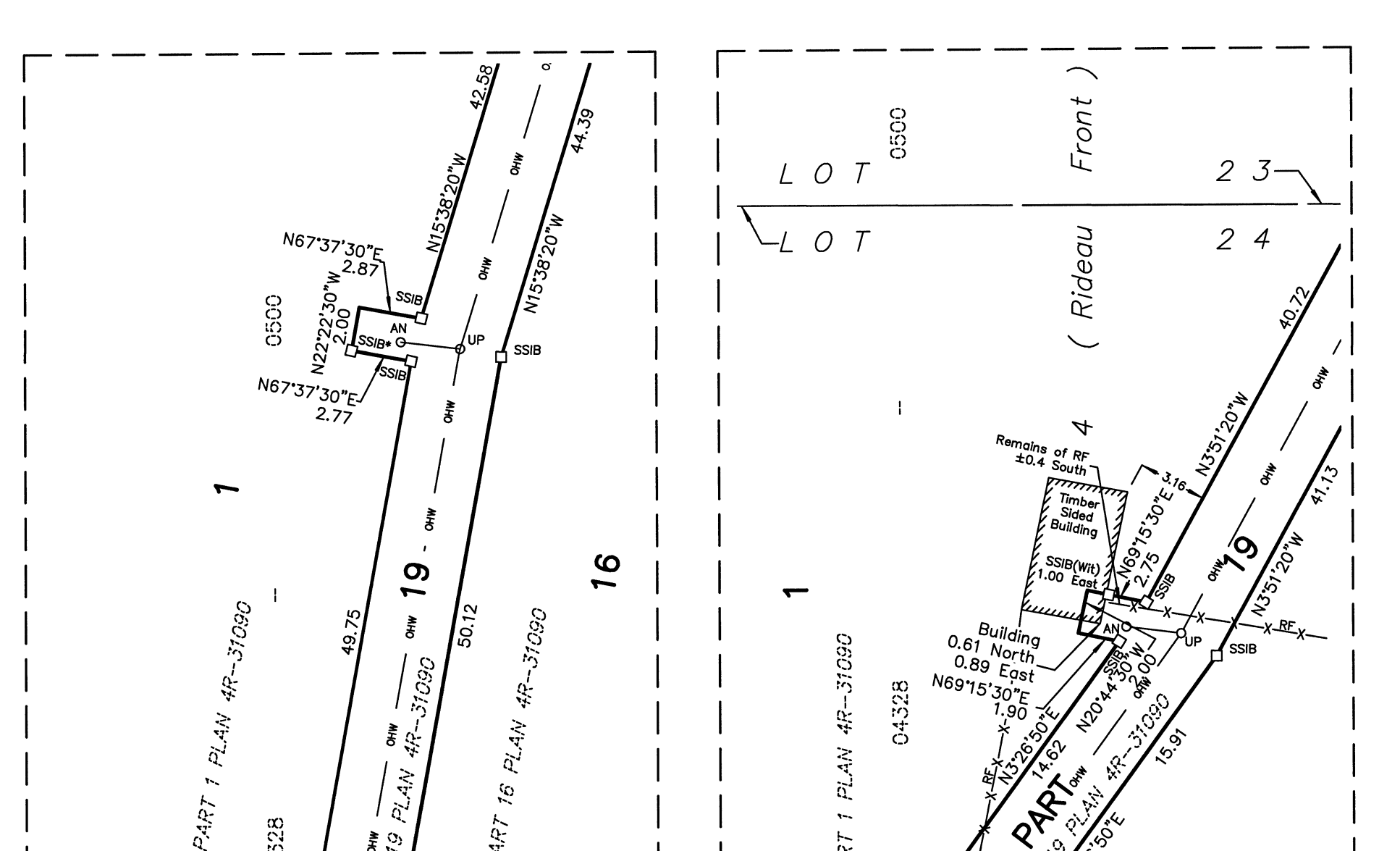
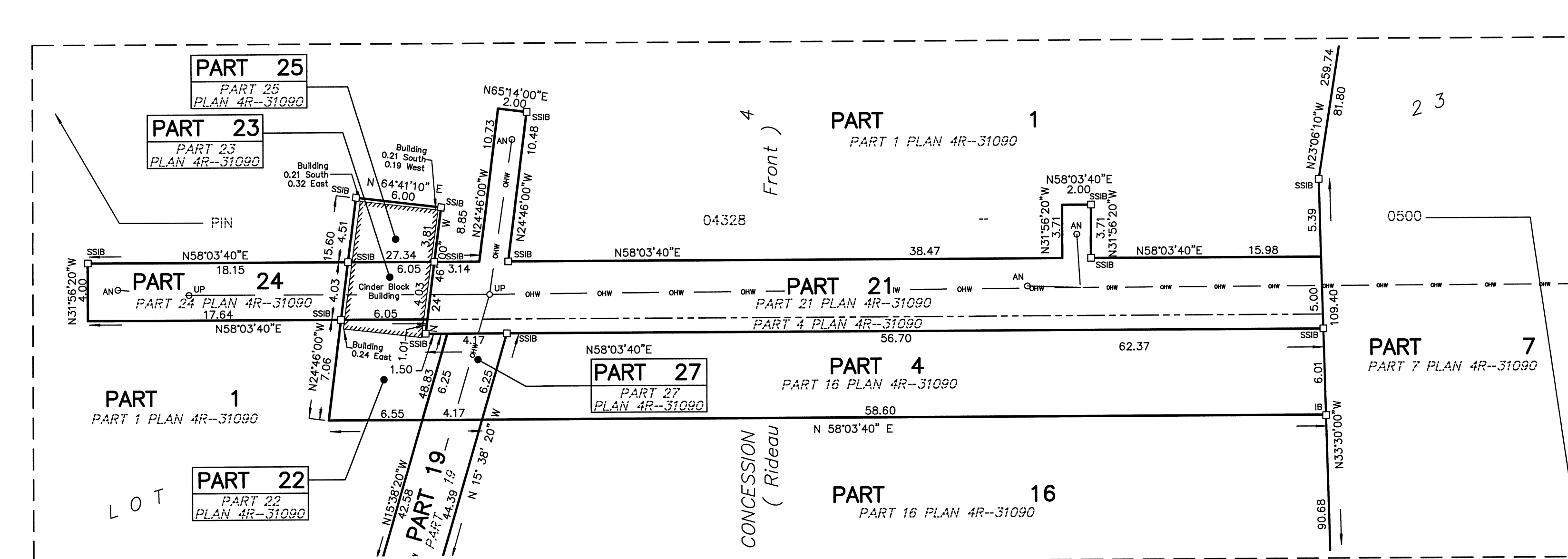
Distance Note
Distances shown on this plan are ground distances and can be converted to grid distances by multiplying by the combined scale factor of 0.999943.

Bearing Note
Bearings are given derived from the eastern line of Albion Road having a bearing of N 27° 42' 37" W as shown on Plan 4R-5731 and are referred to the Central Meridian of M.T.M. Zone 9 (79° 30' West Longitude) Nad 83 (Original).
For bearing comparisons, a rotation of 0° 41' 15" counter-clockwise was applied to bearings on 1R & 4.
For bearing comparisons, a rotation of 0° 42' 00" counter-clockwise was applied to bearings on 5.

Surveyor's Certificate

I certify that:
1. This survey and plan are correct and in accordance with the Survey Act, the Surveyors Act and the Land Titles Act and the Regulations made under them.
2. The survey was completed on the 2nd day of April, 2018.

Date: 2/28/18
Farley, Smith & Denis
Ontario Land Surveyor



FARLEY, SMITH & DENIS SURVEYING LTD.
ONTARIO LAND SURVEYORS
CANADIAN LAND SURVEYORS
190 COLLINGWOOD ROAD, OTTAWA, ONTARIO K2E 7J5
TEL: (613) 727-8226 FAX: (613) 727-1826