

Allison Hamlin

ALLISON HAMLIN
MANAGER (A), DEVELOPMENT REVIEW WEST
PLANNING, REAL ESTATE & ECONOMIC DEVELOPMENT
DEPARTMENT, CITY OF OTTAWA

APPROVED
By Allison Hamlin at 1:27 pm, Aug 03, 2023

ONTARIO ASSOCIATION
OF ARCHITECTS
YALLOWEGA
architecture inc.
RICHARD YALLOWEGA
LICENCE
#4202
157 Silpa St, Greater Sudbury,
ON P3B 3E5
+1 705-806-4643



1600 Carling Ave, Ottawa, ON K1Y 1B2
+1 800-397-2458



60 Ryeburn Dr, Gloucester, ON K1V 1H5
+1 613-884-4785



2540 Sheffield Rd, Ottawa, ON K1B 3V6
+1 613-749-8191



Hard Rock Ottawa Hotel &
Casino SP Agreement

4837 ALBION RD,
GLOUCESTER, OTTAWA
ONTARIO, CANADA

REVISED PER CITY COMMENTS

SUBMISSIONS

NO.	DATE	DESCRIPTION
9	July 25th 2023	REVISED PER CITY COMMENTS
8	July 14th 2023	ISSUED FOR PERMIT
7	June 20th 2023	REVISED PER CITY COMMENTS
6	June 14th 2023	ISSUED FOR GMP
5	March 3rd 2023	REVISED PER CITY COMMENTS
4	November 15th 2022	DESIGN DOCUMENTS PACKAGE
3	November 8th 2022	REVISED PER CITY COMMENTS
2	April 24th 2020	REVISED PER CITY COMMENTS
1	November 20th 2019	ISSUED FOR SITE PLAN APPROVAL

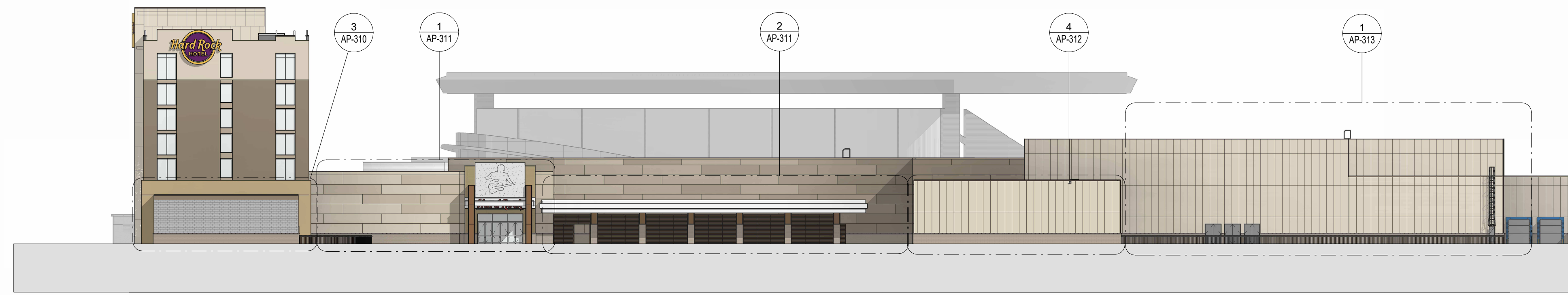
DRAWING TITLE:
Overall Elevations 1

DRAWN BY: MS DATE: July 25th 2023
REVIEWED BY: RY

SCALE: DRAWING NO.

PROJECT NO. 22-001 SP-003-1

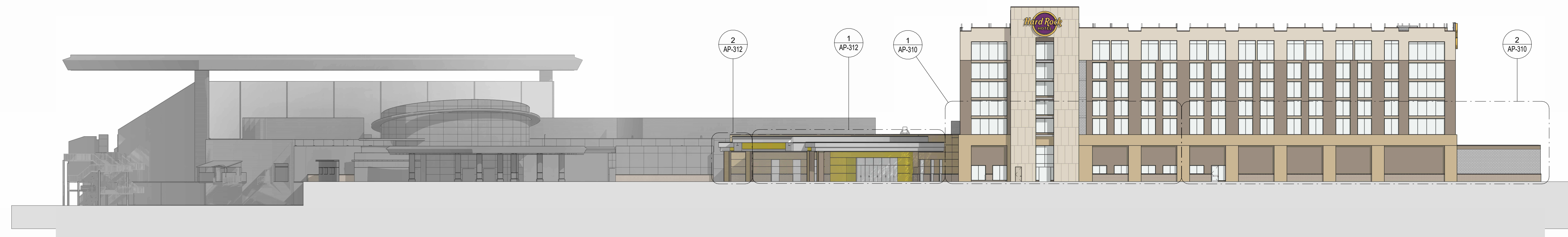
FILE # : D02-12-19-031 PLAN # : 1864



SOUTH OVERALL ELEVATION

SCAL
E
1/32" = 1'-0"

3



WEST OVERALL ELEVATION

SCAL
E
1/32" = 1'-0"

1



NORTHWEST OVERALL ELEVATION

SCAL
E
1/32" = 1'-0"

3