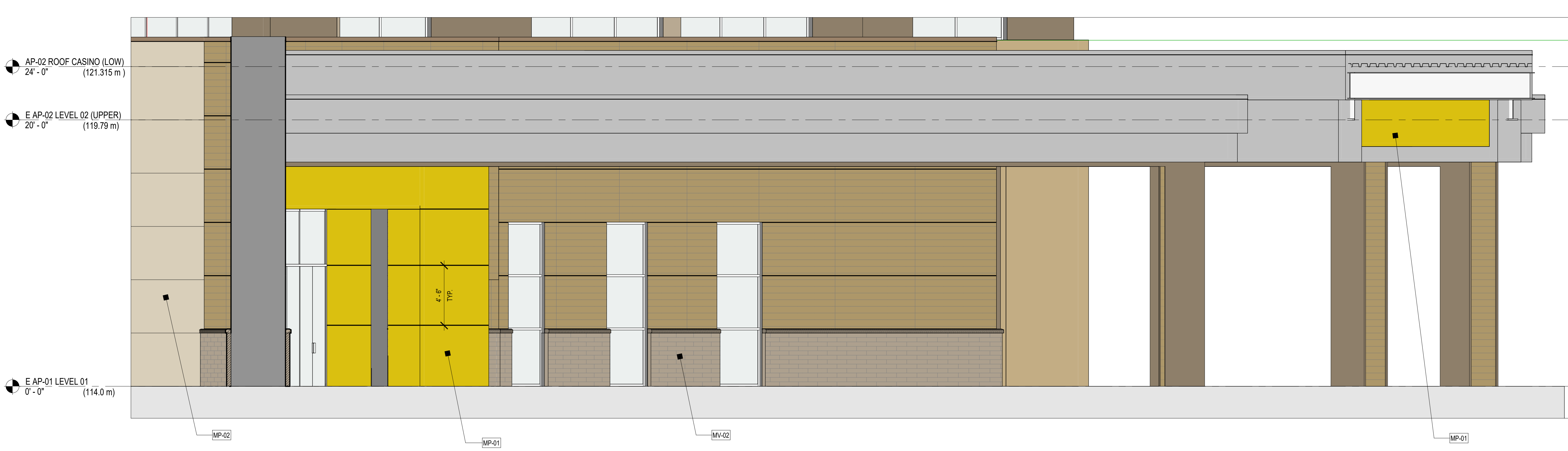
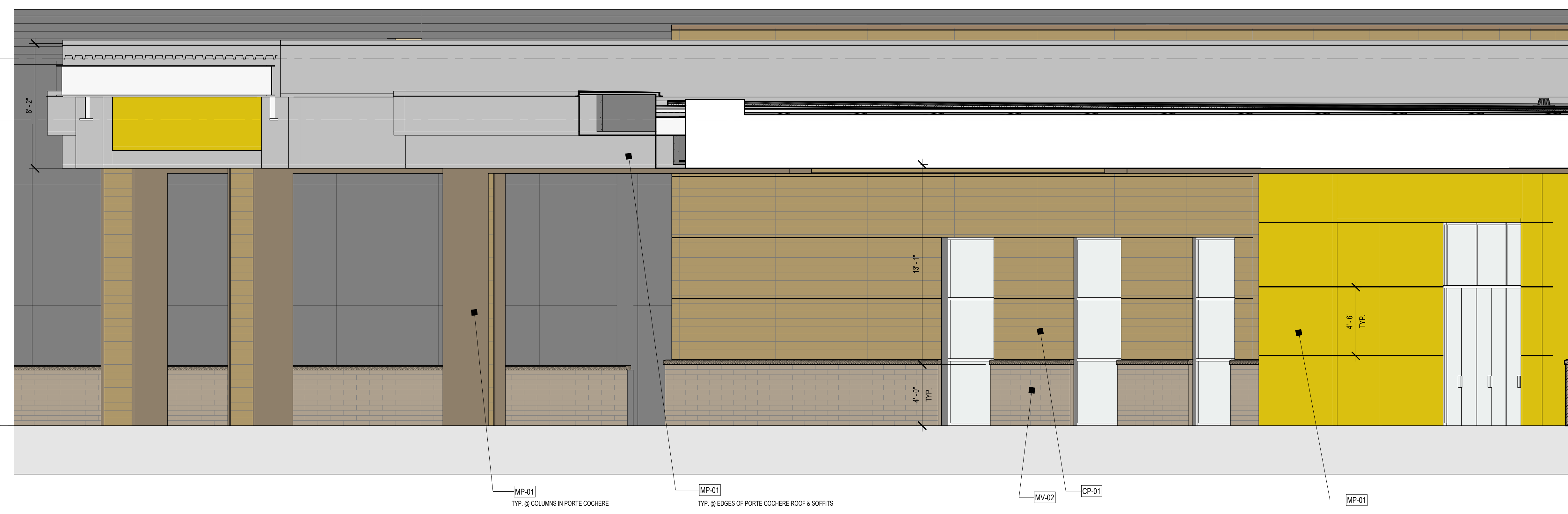


- MP-01 ALUMINUM COMPOSITE METAL (ACM) RANSCREEN PANEL ASSEMBLY - SEE ELEVATIONS FOR COLOR & ORIENTATION. FINAL COLOR TBD. COLOR SAMPLES TO BE SUBMITTED TO ARCHITECT & DESIGNER FOR REVIEW
- MP-02 INSULATED METAL PANEL (IMP) ASSEMBLY - VERTICAL ORIENTATION U.N.O. COLOR MAY VARY. SEE ELEVATIONS. FINAL COLOR TBD. COLOR SAMPLES TO BE SUBMITTED TO ARCHITECT & DESIGNER FOR REVIEW
- MP-03 INSULATED METAL PANEL (IMP) ASSEMBLY - VERTICAL ORIENTATION U.N.O. COLOR MAY VARY. SEE ELEVATIONS. FINAL COLOR TBD. COLOR SAMPLES TO BE SUBMITTED TO ARCHITECT & DESIGNER FOR REVIEW
- CP-01 WOOD LOOK COMPOSITE PANEL ASSEMBLY - FINAL COLOR TBD. COLOR SAMPLES TO BE SUBMITTED TO ARCHITECT & DESIGNER FOR REVIEW
- VG-01 VINYL GRAPHIC - TRANSLUCENT SELF ADHERED VINYL GRAPHIC APPLIED TO INSIDE FACE OF GLASS. GRAPHIC IMAGE PROVIDED BY OWNER
- DM-01 DECORATIVE METAL - PERFORATED METAL PANEL SCREEN. B.O.D. ZARNER. GRAPHIC IMAGE PROVIDED BY OWNER
- MT-03 ALUMINUM COMPOSITE METAL (ACM) RANSCREEN PANEL ASSEMBLY W/ STONE LOOK - SEE ELEVATIONS FOR COLOR & ORIENTATION. FINAL COLOR TBD. COLOR SAMPLES TO BE SUBMITTED TO ARCHITECT & DESIGNER FOR REVIEW
- MV-02 MASONRY VENEER - STACKED STONE W/ SOLID STONE CAP. LEDESTONE FINISH STYLE. FINAL COLOR TBD. SAMPLES TO BE SUBMITTED TO ARCHITECT & DESIGNER FOR REVIEW
- RS-01 ROOF SCREEN - CS GROUP. METAL VISION SCREEN B.O.D. VEST. ALACRIS SERIES. FINAL COLOR TBD. SAMPLES TO BE SUBMITTED TO ARCHITECT & DESIGNER FOR REVIEW
- CC-01 COLUMN COVER - DAMS INC. PRE-FAB STAINLESS STEEL COLUMN COVER



NORTHEAST PORTE COCHERE SCALE: 1/4" = 1'-0" 3

- AP-02 ROOF CASINO (LOW) 24'-0" (121.315 m)
- E AP-02 LEVEL 02 (UPPER) 20'-0" (119.79 m)
- E AP-01 LEVEL 01 0'-0" (114.0 m)



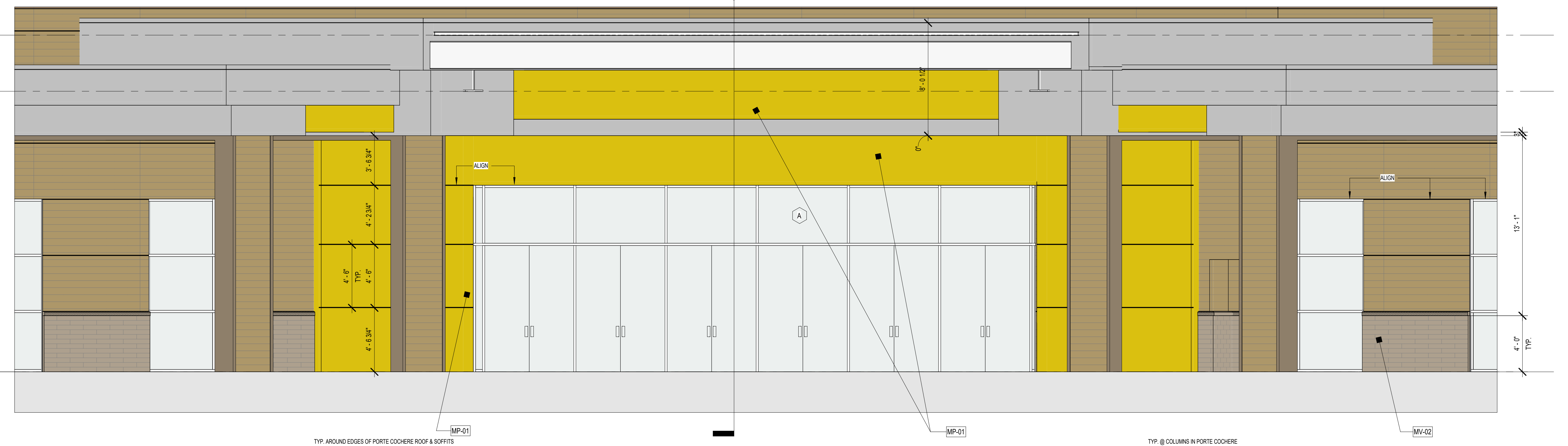
SOUTHWEST PORTE COCHERE SCALE: 1/4" = 1'-0" 2

A Hamlin

**ALLISON HAMLIN  
MANAGER (A), DEVELOPMENT REVIEW WEST  
PLANNING, REAL ESTATE & ECONOMIC DEVELOPMENT  
DEPARTMENT, CITY OF OTTAWA**

**APPROVED**  
By Allison Hamlin at 1:17 pm, Aug 03, 2023

- AP-02 ROOF CASINO (LOW) 24'-0" (121.315 m)
- E AP-02 LEVEL 02 (UPPER) 20'-0" (119.79 m)
- E AP-01 LEVEL 01 0'-0" (114.0 m)



NORTHWEST PORTE COCHERE SCALE: 1/4" = 1'-0" 1

**YALOWEGA ASSOCIATION OF ARCHITECTS**  
YALOWEGA architecture inc.  
157 Slipcase St, Greater Sudbury, ON P3B 3E5  
+1 705-806-4643

**SNC-LAVALIN**  
1600 Carling Ave, Ottawa, ON K1Y 1B2  
+1 800-397-2458

**sense engineering**  
60 Ryeburn Dr, Gloucester, ON K1V 1H5  
+1 613-884-4785

**NOVATECH**  
2540 Sheffield Rd, Ottawa, ON K1B 3V6  
+1 613-749-8191

**Hard Rock CASINO**  
Hard Rock Ottawa Hotel & Casino SP Agreement  
4837 ALBION RD, GLOUCESTER, OTTAWA, ONTARIO, CANADA

REVISED PER CITY COMMENTS

SUBMISSIONS		
NO.	DATE	DESCRIPTION
9	July 25th 2023	REVISED PER CITY COMMENTS
8	July 14th 2023	ISSUED FOR PERMIT
7	June 20th 2023	REVISED PER CITY COMMENTS
6	June 14th 2023	ISSUED FOR CMP
5	March 3rd 2023	REVISED PER CITY COMMENTS
4	November 15th 2022	DESIGN DOCUMENTS PACKAGE
3	November 8th 2022	REVISED PER CITY COMMENTS
2	April 24th 2020	REVISED PER CITY COMMENTS
1	November 20th 2019	ISSUED FOR SITE PLAN APPROVAL

DRAWING TITLE:  
**Enlarged Elevations 1**

DRAWN BY: MS	DATE: July 25th 2023
REVIEWED BY: RY	
SCALE:	DRAWING NO.
PROJECT NO. 22-001	<b>SP-004-7</b>