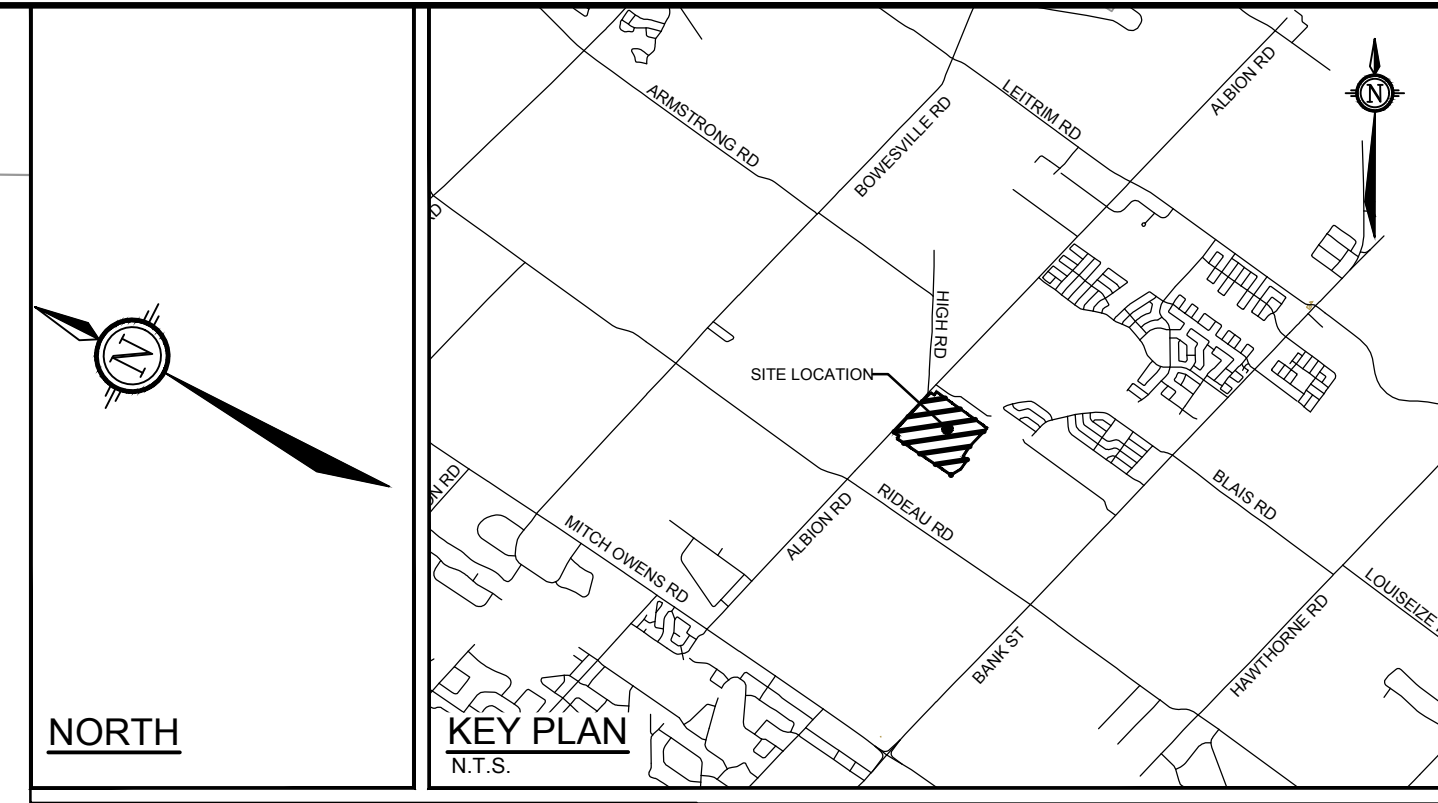


At Hamlin

ALLISON HAMLIN  
MANAGER (A), DEVELOPMENT REVIEW WEST  
PLANNING, REAL ESTATE & ECONOMIC DEVELOPMENT  
DEPARTMENT, CITY OF OTTAWA

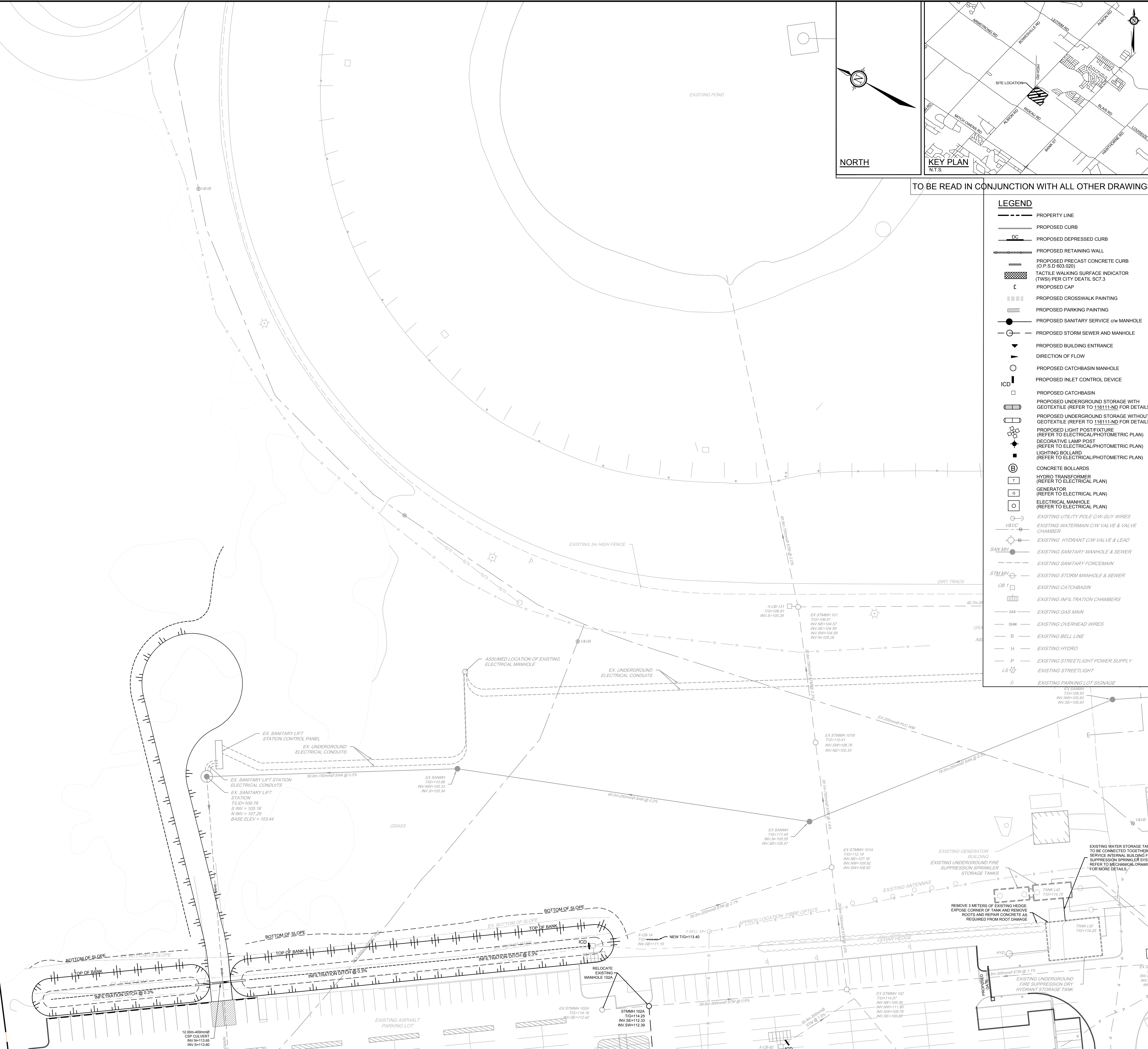
APPROVED  
By Allison Hamlin at 1:12 pm, Aug 03, 2023



TO BE READ IN CONJUNCTION WITH ALL OTHER DRAWINGS

**LEGEND**

- PROPERTY LINE
- PROPOSED CURB
- PROPOSED DEPRESSED CURB
- PROPOSED RETAINING WALL
- PROPOSED PRECAST CONCRETE CURB (O.P.S.D 603.020)
- TACTILE WALKING SURFACE INDICATOR (TWS) PER CITY DEATIL SC7.3
- PROPOSED CAP
- PROPOSED CROSSWALK PAINTING
- PROPOSED PARKING PAINTING
- PROPOSED SANITARY SERVICE c/w MANHOLE
- PROPOSED STORM SEWER AND MANHOLE
- PROPOSED BUILDING ENTRANCE
- DIRECTION OF FLOW
- PROPOSED CATCHBASIN MANHOLE
- PROPOSED INLET CONTROL DEVICE
- PROPOSED CATCHBASIN
- PROPOSED UNDERGROUND STORAGE WITH GEOTEXTILE (REFER TO 116111-ND FOR DETAILS)
- PROPOSED UNDERGROUND STORAGE WITHOUT GEOTEXTILE (REFER TO 116111-ND FOR DETAILS)
- PROPOSED LIGHT POST/FIXTURE (REFER TO ELECTRICAL/PHOTOMETRIC PLAN)
- DECORATIVE LAMP POST (REFER TO ELECTRICAL/PHOTOMETRIC PLAN)
- LIGHTING BOLLARD (REFER TO ELECTRICAL/PHOTOMETRIC PLAN)
- CONCRETE BOLLARDS
- HYDRO TRANSFORMER (REFER TO ELECTRICAL PLAN)
- GENERATOR (REFER TO ELECTRICAL PLAN)
- ELECTRICAL MANHOLE (REFER TO ELECTRICAL PLAN)
- EXISTING UTILITY POLE c/w GUY WIRES
- EXISTING WATERMAIN c/w VALVE & VALVE CHAMBER
- EXISTING HYDRANT c/w VALVE & LEAD
- EXISTING SANITARY MANHOLE & SEWER
- EXISTING SANITARY FORCEMAIN
- EXISTING STORM MANHOLE & SEWER
- EXISTING CATCH-BASIN
- EXISTING INFILTRATION CHAMBERS
- EXISTING GAS MAIN
- EXISTING OVERHEAD WIRES
- EXISTING BELL LINE
- EXISTING HYDRO
- EXISTING STREETLIGHT POWER SUPPLY
- EXISTING STREETLIGHT
- EXISTING PARKING LOT SIGNAGE

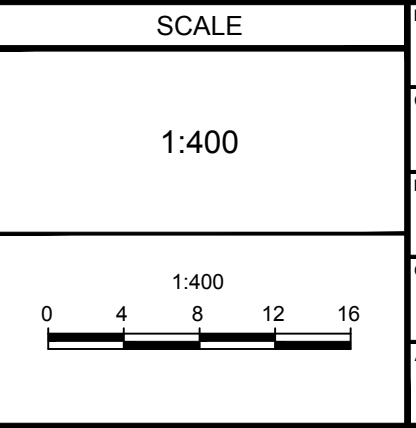


C:\p\116111-ND\Design\116111-ND-01-CP.dwg G:\P\81 Jun 20 2023 2:29pm dhamlin

NOTE:  
THE POSITION OF ALL POLE LINES, CONDUITS,  
WATERMANS, SEWERS AND OTHER  
UNDERGROUND AND OVERGROUND UTILITIES AND  
STRUCTURES IS NOT NECESSARILY SHOWN ON  
THE CONTRACT DRAWINGS, AND WHERE SHOWN,  
THE ACCURACY OF THE POSITION OF SUCH  
UTILITIES AND STRUCTURES IS NOT GUARANTEED.  
BEFORE STARTING WORK, DETERMINE THE EXACT  
LOCATION OF ALL SUCH UTILITIES AND  
STRUCTURES AND ASSUME ALL LIABILITY FOR  
DAMAGE TO THEM.

**NOT FOR  
CONSTRUCTION**

NO.	REVISION	DATE	BY
7	REVISED PER CITY COMMENTS	JUN 2023	MJH
6	ISSUED FOR GMP	JUN 14/23	MJH
5	REVISED PER CITY COMMENTS	MAR 03/23	MJH
4	DESIGN DOCUMENTS PACKAGE	NOV 15/22	MJH
3	REVISED PER CITY COMMENTS	NOV 08/22	MJH
2	REVISED PER CITY COMMENTS	APRIL 24/20	CJR
1	ISSUED FOR SITE PLAN APPROVAL	NOV 20/19	CJR



FOR REVIEW ONLY

DESIGN	MJH
CHECKED	CJR
DRAWN	MJH
CHECKED	CJR
APPROVED	JLS

**NOVATECH**  
Engineers, Planners & Landscape Architects  
Suite 200, 240 Michael Copland Drive  
Ottawa, Ontario, Canada K2M 1P6  
Telephone: (613) 254-9643  
Facsimile: (613) 254-5867  
Website: www.novatech-eng.com

LOCATION  
4837 ALBION ROAD, CITY OF OTTAWA  
HARD ROCK OTTAWA

DRAWING NAME  
GENERAL PLAN OF SERVICES  
NORTH-WEST DEVELOPMENT

PROJECT NO.: 116111  
REV: REV #7  
DRAWING NO.: 116111-GP2

D07-12-19-0191 Plan No. 18864