

At Hamlin

ALLISON HAMLIN
MANAGER (A), DEVELOPMENT REVIEW WEST
PLANNING, REAL ESTATE & ECONOMIC DEVELOPMENT
DEPARTMENT, CITY OF OTTAWA

APPROVED

By Allison Hamlin at 1:17 pm, Aug 03, 2023



1600 Carling Ave, Ottawa, ON K1Y 1B2
+1 800-397-2458



60 Ryeburn Dr, Gloucester, ON K1V 1H5
+1 613-884-4785



2540 Sheffield Rd, Ottawa, ON K1B 3V6
+1 613-749-8191



Hard Rock Ottawa Hotel &
Casino SP Agreement

4837 ALBION RD,
GLOUCESTER, OTTAWA
ONTARIO, CANADA

REVISED PER CITY COMMENTS

SUBMISSIONS

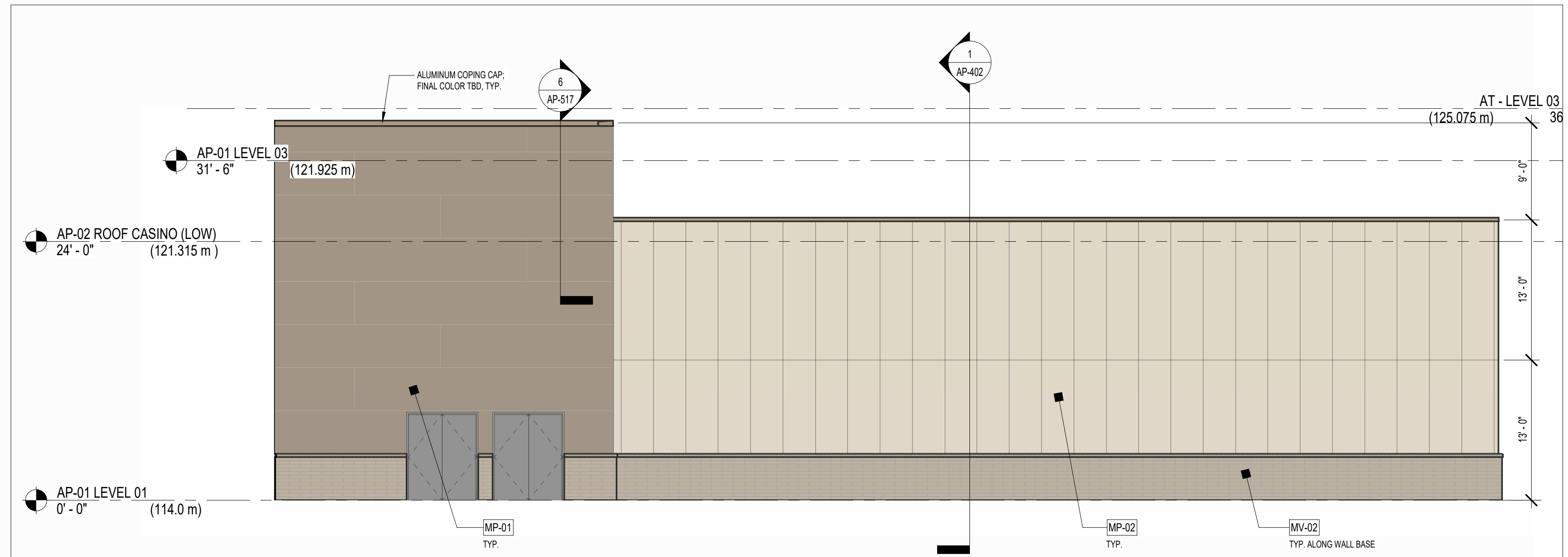
NO.	DATE	DESCRIPTION
9	July 25th 2023	REVISED PER CITY COMMENTS
8	July 14th 2023	ISSUED FOR PERMIT
7	June 20th 2023	REVISED PER CITY COMMENTS
6	June 14th 2023	ISSUED FOR GMP
5	March 3rd 2023	REVISED PER CITY COMMENTS
4	November 15th 2022	DESIGN DOCUMENTS PACKAGE
3	November 8th 2022	REVISED PER CITY COMMENTS
2	April 24th 2020	REVISED PER CITY COMMENTS
1	November 20th 2019	ISSUED FOR SITE PLAN APPROVAL

DRAWING TITLE:
Elevations 2

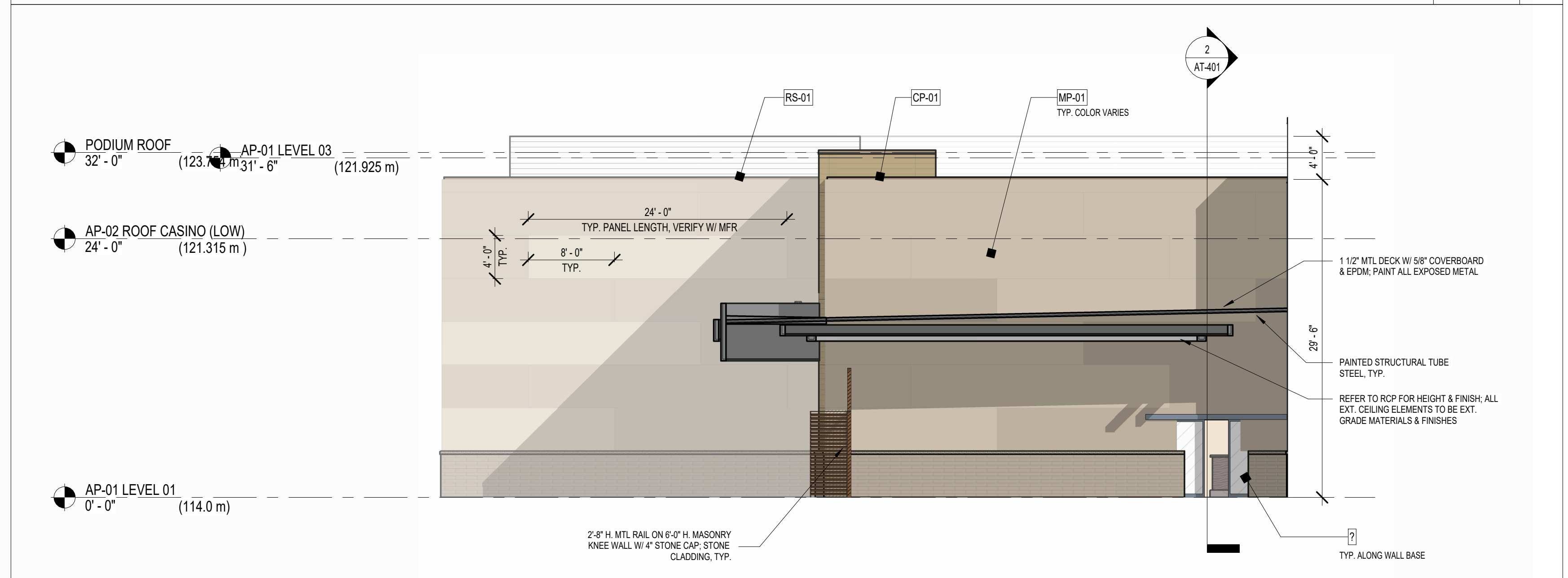
DRAWN BY: MS DATE: July 25th 2023
REVIEWED BY: RY

SCALE: DRAWING NO.

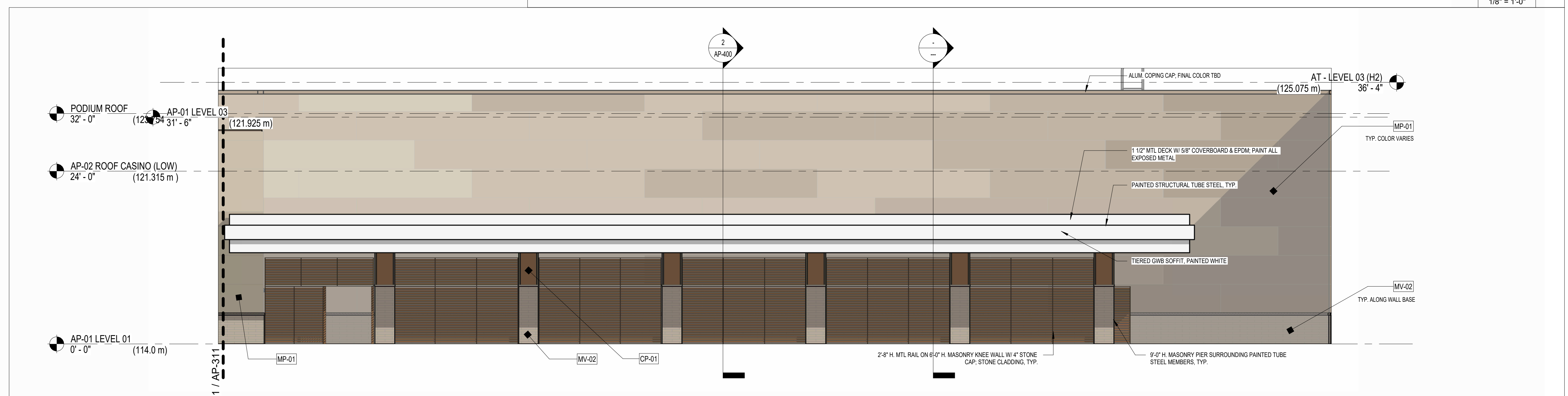
PROJECT NO. 22-001 SP-004-2



SOUTH C SCAL E 1/8" = 1'-0" 4



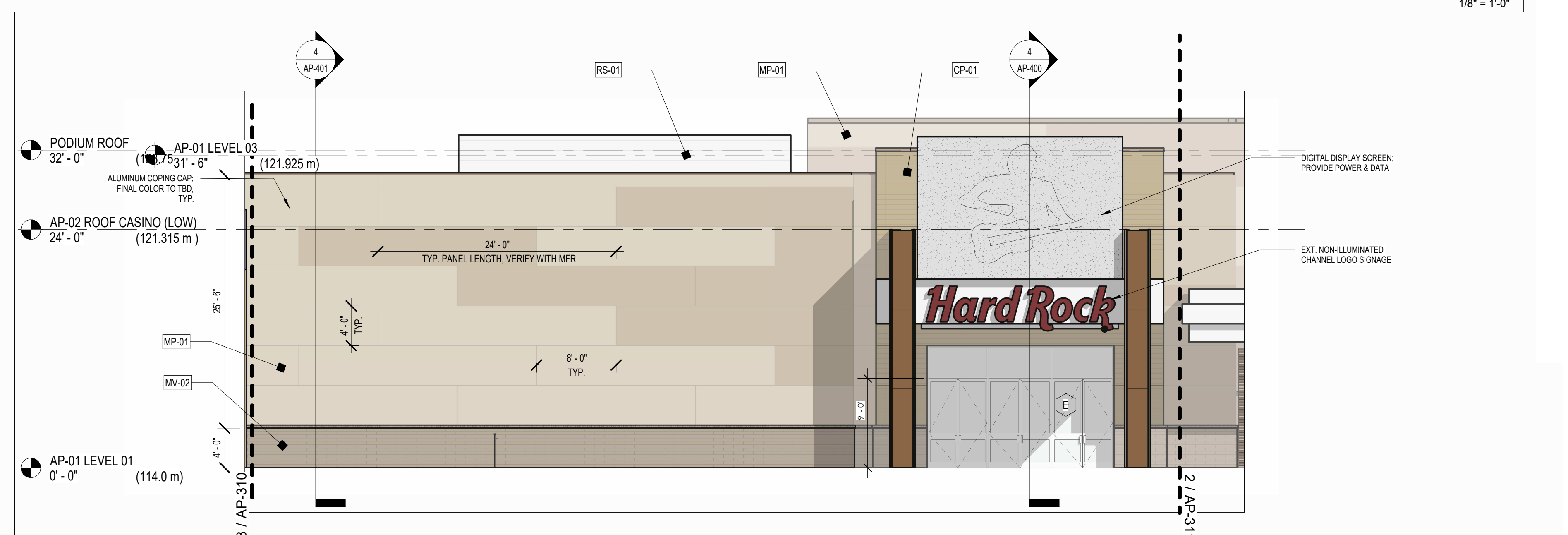
NORTH B-2 SCAL E 1/8" = 1'-0" 3



EAST C SCAL E 1/8" = 1'-0" 2

EXTERIOR MATERIALS LEGEND

MP-01	ALUMINUM COMPOSITE METAL (ACM) RAINSCREEN PANEL ASSEMBLY - SEE ELEVATIONS FOR COLOR & ORIENTATION. FINAL COLOR TBD. COLOR SAMPLES TO BE SUBMITTED TO ARCHITECT & DESIGNER FOR REVIEW.	DM-01	DECORATIVE METAL - PERFORATED METAL PANEL SCREEN. B.O.D. ZINNER. GRAPHIC IMAGE PROVIDED BY OWNER.
MP-02	INSULATED METAL PANEL (IMP) ASSEMBLY - VERTICAL ORIENTATION U.N.O. COLOR MAY VARY. SEE ELEVATIONS. FINAL COLOR TBD. COLOR SAMPLES TO BE SUBMITTED TO ARCHITECT & DESIGNER FOR REVIEW.	MT-03	ALUMINUM COMPOSITE METAL (ACM) RAINSCREEN PANEL ASSEMBLY W/ STONE LOOK - SEE ELEVATIONS FOR COLOR & ORIENTATION. FINAL COLOR TBD. COLOR SAMPLES TO BE SUBMITTED TO ARCHITECT & DESIGNER FOR REVIEW.
MP-03	INSULATED METAL PANEL (IMP) ASSEMBLY - VERTICAL ORIENTATION U.N.O. COLOR MAY VARY. SEE ELEVATIONS. FINAL COLOR TBD. COLOR SAMPLES TO BE SUBMITTED TO ARCHITECT & DESIGNER FOR REVIEW.	MV-02	MASONRY VENEER - STACKED STONE W/ SOLID STONE CAP. LEDESTONE FINISH STYLE. FINAL COLOR TBD. SAMPLES TO BE SUBMITTED TO ARCHITECT & DESIGNER FOR REVIEW.
CP-01	WOOD LOOK COMPOSITE PANEL ASSEMBLY - FINAL COLOR TBD. COLOR SAMPLES TO BE SUBMITTED TO ARCHITECT & DESIGNER FOR REVIEW.	RS-01	ROOF SCREEN - CS GROUP. METAL VISION SCREEN. B.O.D. VERT-A-CARE SERIES. FINAL COLOR TBD. SAMPLES TO BE SUBMITTED TO ARCHITECT & DESIGNER FOR REVIEW.
VG-01	VINYL GRAPHIC - TRANSLUCENT SELF-ADHERED VINYL GRAPHIC APPLIED TO INSIDE FACE OF GLASS. GRAPHIC IMAGE PROVIDED BY OWNER.	CC-01	COLUMN COVER - DAMA INC. PRE-FAB. STAINLESS STEEL COLUMN COVER.



SOUTH B-2 SCAL E 1/8" = 1'-0" 1