
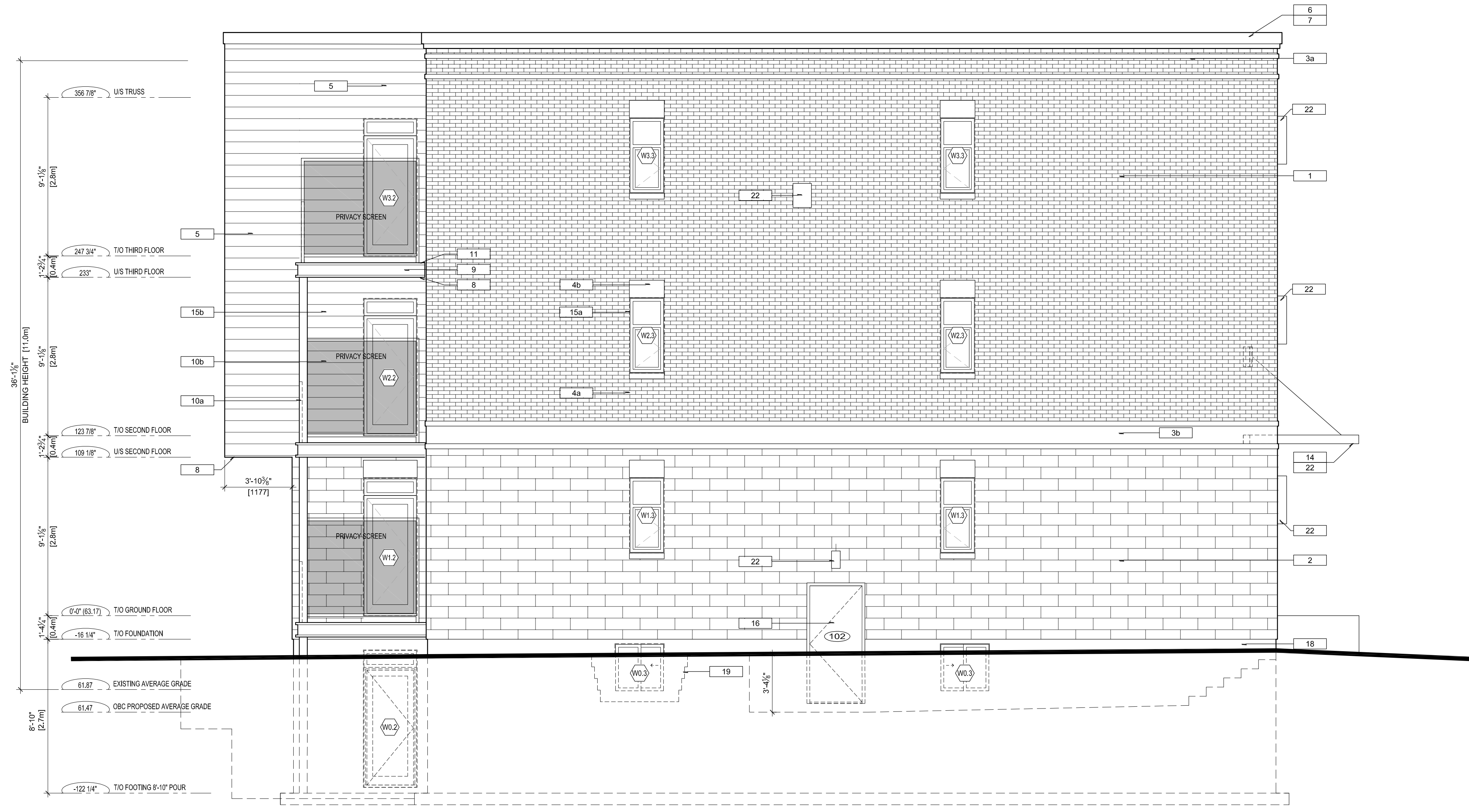


KEY TO MATERIALS	
1	BRICK VENEER by BRAMPTON BRICK COLOUR: OLD CHICAGO SIZE: 10 1/8" x 10 1/2" (PREMIER PLUS) MORTAR: TBD
2	STONE VENEER by SHOULDRICE COLOUR: PEARL WHITE (TAPESTRY) SIZE: 15 3/8" x 12 1/2" x 1/2" MORTAR: TBD
3a	PRIMARY CORNICE MASONRY VENEER: TBD COLOUR: TBD SIZE: TBD MORTAR: TBD
3b	SECONDARY CORNICE MASONRY: TBD COLOUR: TBD SIZE: TBD MORTAR: TBD
4a	SHOULDRICE STONE SILL COLOUR: TBD
4b	SHOULDRICE STONE LINTEL COLOUR: TBD
5	SIGN TEXTURE: TBD COLOUR: TBD
6	PREFINISHED 22ga ALUMINUM FLASHING COLOUR: TBD
7	PREFINISHED 22ga ALUMINUM FASCIA COLOUR: TBD
8	PREFINISHED VENTED SOFFIT COLOUR: TBD
9	PREFINISHED 22ga ALUMINUM FASCIA COLOUR: CLEAR ANODIZED PROFILE: DB FASCIA 1x4 ON 2x8
10a	GUARD AT BALCONY - ENGINEERED DRAWINGS TO BE PROVIDED TO BUILDING INSPECTOR
10b	PRIVACY PANEL
11	BALCONY TOPPING MEMBRANE
12	BALCONY POST
13a	ALUMINUM CLAD WINDOW COLOUR: TBD
13b	ALUMINUM CLAD DOOR COLOUR: TBD
13c	ALUMINUM FLASHING COLOUR: TBD
14	SUSPENDED CANOPY: TBD
15a	ALUMINUM CLAD VINYL WINDOWS COLOUR: TBD
15b	ALUMINUM CLAD VINYL PATIO DOORS COLOUR: TBD
16	INSULATED METAL DOOR & FRAME COLOUR: TBD
17	SECTIONAL STEEL GARAGE DOOR COLOUR: TBD
18	CEMENT PAVING
19	RETAINING WALL - PRECAST CONCRETE MODULAR UNITS: TBD
20	GUARD AT FRONT DOOR & RAMP - ENGINEERED DRAWINGS TO BE PROVIDED TO BUILDING INSPECTOR
21	ROOFING MEMBRANE
22	LIGHT FIXTURE (MISC. TYPE)
23	CALL BOX
24	AUTOMATIC OPENER

APPROVED **REFUSED**
THIS _11_ DAY OF August, 2020

ERIN O'CONNELL, MCIP, RPP, MANAGER (A)
DEVELOPMENT REVIEW, WEST
PLANNING, INFRASTRUCTURE AND ECONOMIC
DEVELOPMENT DEPARTMENT, CITY OF OTTAWA



1
A2.4 **WEST ELEVATION**
 SCALE: 1/4"=1'-0"



Rosaline J. Hill Architect Inc.

414 Churchhill Ave. N. Ottawa,
ON, K1Z 5C6 • 613-853-2822
www.rjhil.ca • rosahill@rjhil.ca

No.	Y / M / D	REVISION
6.	2020-05-01	SITE PLAN COMMENTS
5.	2020-03-17	ISSUED FOR BUILDING PERMIT
4.	2020-02-25	FOR CONSULTANT COORDINATION
3.	2020-02-24	ISSUED FOR RE-SUBMISSION
2.	2020-02-03	COORD. FOR RE-SUBMISSION
1.	2019-11-08	ISSUED FOR SITE PLAN CONTROL

Civil Engineer:
LRL Associates Ltd.
Johnston, Virginia
johnson@lrl.ca
613-842-3434 (x 223)

Structural Engineer:
Smith, Elliott
LRL Associates Ltd.
esmith@lrl.ca
613-842-3434 (ext. 213)

Surveyor:
Annis O'Sullivan
Vollebekk Ltd.
Ed Herweyer
EJH@annisd.com
613-727-0934

Landscape Architect:
James B. Lennox &
Associates Inc.
Lennox, James
j@jbla.ca
613-722-5168

Mech/Elec. Engineer:
LRL Associates Ltd.
Tessier, Martin
mtessier@lrl.ca
613-842-3434 (x 240)

Noise Consultant:
State of the Art Acoustik Inc.
Alexandre Fortier
afortier@sota.ca
613-745-2003 ext. 5

Environmental Study:
Pinchin Ltd.
Wilson, Christine
cwilson@pinchin.com
613-592-3387 (x 1827)

Geotechnical Engineer:
Paterson Group
David Gilbert
DGilbert@patersongroup.ca
613-226-7381 ext. 205

It is the responsibility of the appropriate contractor to check & verify all dimensions on site and report all errors prior to construction. All contractors must comply with all pertinent codes & by-laws, & use proprietary products as directed by the manufacturer. Do not scale drawings. This drawing may not be used for construction until issued as such. Copyright reserved.

COLUMBUS APARTMENTS
261-265 Columbus Ave., Ottawa, Ontario

WEST ELEVATION

Drawn By: AW	Date: July 2019	A2.3
Project No: 1902	Scale: 1/4" = 1'-0"	