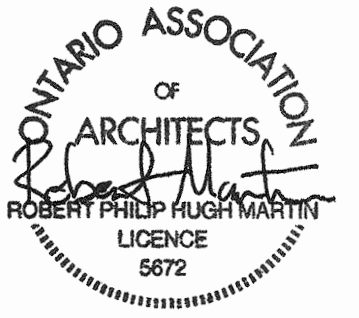


STAMP:



**CLIENT:**  
EPCON Enterprises Limited  
1566 Lapierre Avenue, Ottawa, ON - K1Z 7T2

**AGENT:**  
Novatech Engineering Consultants Limited  
240 Michael Cowpland Drive, Suite 200, Ottawa, ON - K2M 1P6

**CIVIL ENGINEER:**  
Novatech Engineering Consultants Limited  
240 Michael Cowpland Drive, Suite 200, Ottawa, ON - K2M 1P6

**PLANNER & LANDSCAPE:**  
Novatech Engineering Consultants Limited  
240 Michael Cowpland Drive, Suite 200, Ottawa, ON - K2M 1P6

**SURVEYOR:**  
Fairhall Moffatt & Woodland Limited  
600 Terry Fox Drive, Suite 100, Kanata, ON - K2L 4B6

**REVISIONS:**

No.	DESCRIPTION	DATE
05	ISSUED FOR SITE PLAN CONTROL RESPONSE	2020-05-27
04	ISSUED FOR SITE PLAN CONTROL RESPONSE	2020-04-16
03	ISSUED FOR COORDINATION	2020-03-30
02	ISSUED FOR SITE PLAN CONTROL	2019-11-19
01	ISSUED FOR COORDINATION	2019-11-05

DRAWINGS COPYRIGHT ROBERTSON MARTIN ARCHITECTS.  
DO NOT COPY. DO NOT SCALE DRAWINGS.  
ALL DIMENSIONS TO BE CHECKED AND VERIFIED ON SITE.

**NORTH:**

**PROJECT:**  
**22 UNIT MID-RISE APARTMENT DWELLING**  
246 Gilmour Street

**DRAWING:**  
**NORTH AND SOUTH ELEVATIONS**

**DESIGNED BY:** SD + NSB      **APPROVED BY:** RM

**DRAWN BY:** NSB

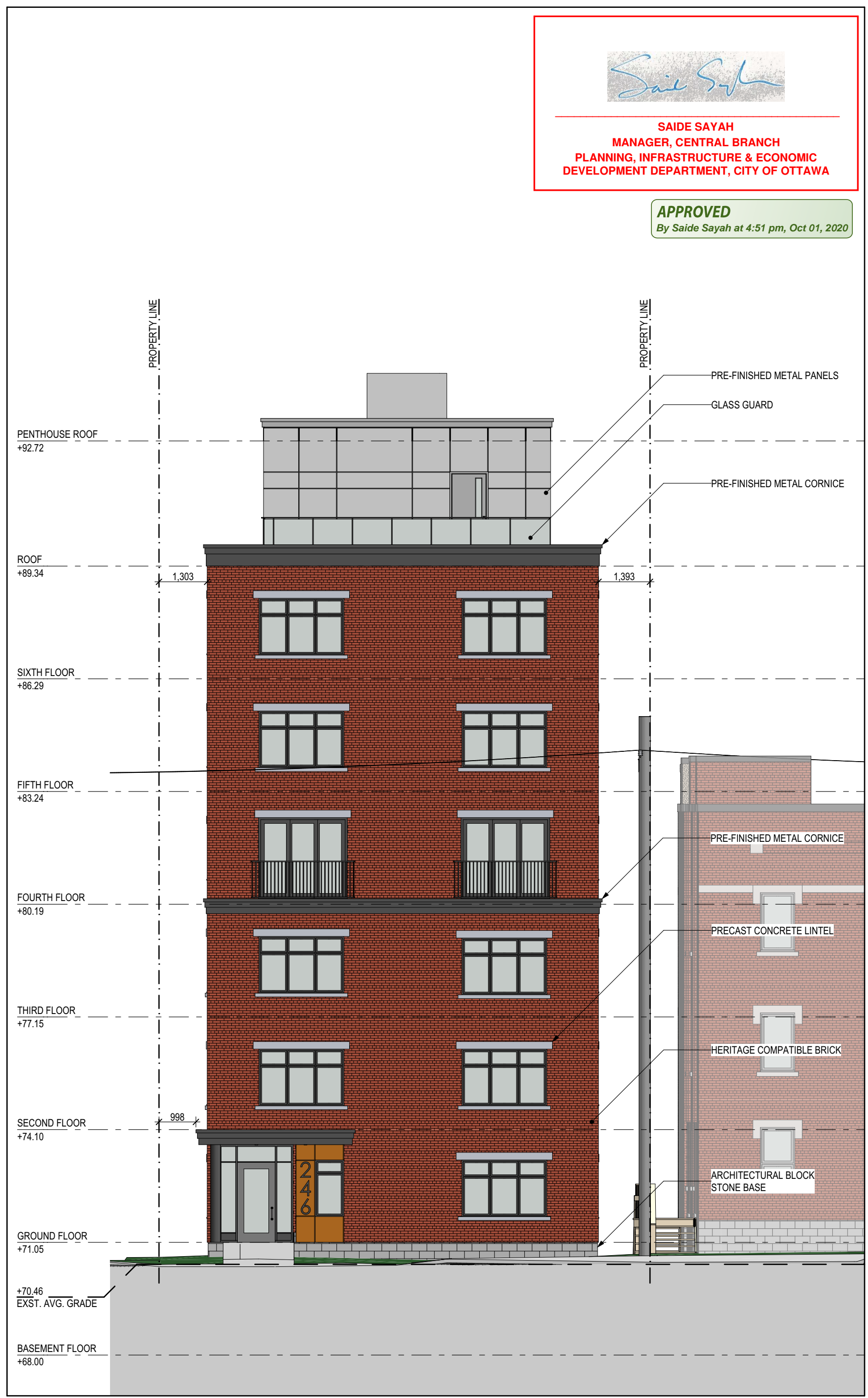
**DATE:** 2020-05-27      **SCALE:** AS SHOWN

**RMA PROJECT NUMBER:** 19046      **SHEET NUMBER:** A300

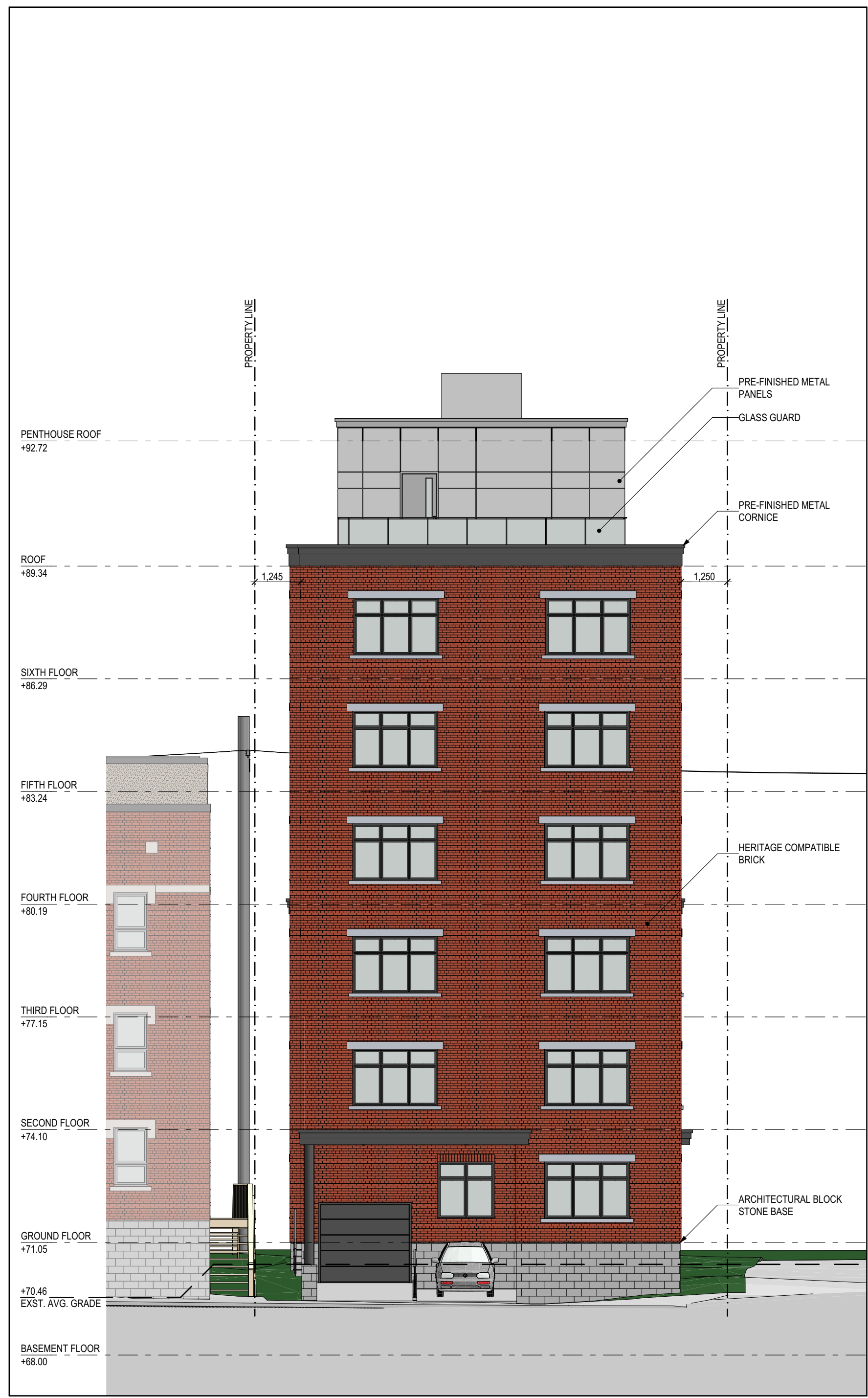
*Saide Sayah*

**SAIDE SAYAH**  
MANAGER, CENTRAL BRANCH  
PLANNING, INFRASTRUCTURE & ECONOMIC  
DEVELOPMENT DEPARTMENT, CITY OF OTTAWA

**APPROVED**  
By Saide Sayah at 4:51 pm, Oct 01, 2020



**1**  
NORTH ELEVATION  
SCALE: 1:100



**2**  
SOUTH ELEVATION  
SCALE: 1:100

A2 19046\_246Gilmour\_DesignDevelopment\_2020\_04\_09.pln

D07-12-19-0196

STAMP:



CLIENT:

EPCON Enterprises Limited  
1566 Lapierre Avenue, Ottawa, ON - K1Z 7T2

AGENT:

Novatech Engineering Consultants Limited  
240 Michael Cowpland Drive, Suite 200, Ottawa, ON - K2M 1P6

CIVIL ENGINEER:

Novatech Engineering Consultants Limited  
240 Michael Cowpland Drive, Suite 200, Ottawa, ON - K2M 1P6

PLANNER & LANDSCAPE:

Novatech Engineering Consultants Limited  
240 Michael Cowpland Drive, Suite 200, Ottawa, ON - K2M 1P6

SURVEYOR:

Fairhall Moffatt & Woodland Limited  
600 Terry Fox Drive, Suite 100, Kanata, ON - K2L 4B6

REVISIONS:

No.	DESCRIPTION	DATE
05	ISSUED FOR SITE PLAN CONTROL RESPONSE	2020-05-27
04	ISSUED FOR SITE PLAN CONTROL RESPONSE	2020-04-16
03	ISSUED FOR COORDINATION	2020-03-30
02	ISSUED FOR SITE PLAN CONTROL	2019-11-19
01	ISSUED FOR COORDINATION	2019-11-05

DRAWINGS COPYRIGHT ROBERTSON MARTIN ARCHITECTS.

DO NOT COPY. DO NOT SCALE DRAWINGS.  
ALL DIMENSIONS TO BE CHECKED AND VERIFIED ON SITE.

NORTH:

PROJECT:

**22 UNIT MID-RISE APARTMENT DWELLING**

246 Gilmour Street

DRAWING:

**EAST ELEVATION**

DESIGNED BY:

SD + NSB

APPROVED BY:

RM

DRAWN BY:

NSB

DATE:

2020-05-27

SCALE:

AS SHOWN

RMA PROJECT NUMBER

19046

SHEET NUMBER:

A301

*Saide Sayah*

**SAIDE SAYAH**  
MANAGER, CENTRAL BRANCH  
PLANNING, INFRASTRUCTURE & ECONOMIC  
DEVELOPMENT DEPARTMENT, CITY OF OTTAWA

**APPROVED**  
By Saide Sayah at 4:51 pm, Oct 01, 2020



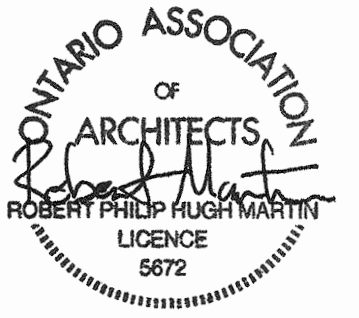
A2 19046\_246Gilmour\_DesignDevelopment\_2020\_04\_09.pln

1 EAST ELEVATION  
A301 SCALE: 1:100

D07-12-19-0196



STAMP:



**CLIENT:**  
EPCON Enterprises Limited  
1566 Lapierre Avenue, Ottawa, ON - K1Z 7T2

**AGENT:**  
Novatech Engineering Consultants Limited  
240 Michael Cowpland Drive, Suite 200, Ottawa, ON - K2M 1P6

**CIVIL ENGINEER:**  
Novatech Engineering Consultants Limited  
240 Michael Cowpland Drive, Suite 200, Ottawa, ON - K2M 1P6

**PLANNER & LANDSCAPE:**  
Novatech Engineering Consultants Limited  
240 Michael Cowpland Drive, Suite 200, Ottawa, ON - K2M 1P6

**SURVEYOR:**  
Fairhall Moffatt & Woodland Limited  
600 Terry Fox Drive, Suite 100, Kanata, ON - K2L 4B6

*Saide Sayah*

**SAIDE SAYAH**  
MANAGER, CENTRAL BRANCH  
PLANNING, INFRASTRUCTURE & ECONOMIC  
DEVELOPMENT DEPARTMENT, CITY OF OTTAWA

**APPROVED**  
By Saide Sayah at 4:51 pm, Oct 01, 2020



**REVISIONS:**

No.	DESCRIPTION	DATE
05	ISSUED FOR SITE PLAN CONTROL RESPONSE	2020-05-27
04	ISSUED FOR SITE PLAN CONTROL RESPONSE	2020-04-16
03	ISSUED FOR COORDINATION	2020-03-30
02	ISSUED FOR SITE PLAN CONTROL	2019-11-19
01	ISSUED FOR COORDINATION	2019-11-05

DRAWINGS COPYRIGHT ROBERTSON MARTIN ARCHITECTS.  
DO NOT COPY. DO NOT SCALE DRAWINGS.  
ALL DIMENSIONS TO BE CHECKED AND VERIFIED ON SITE.

**NORTH:**

**PROJECT:**

**22 UNIT MID-RISE APARTMENT DWELLING**

246 Gilmour Street

**WEST ELEVATION**

**DESIGNED BY:** SD + NSB      **APPROVED BY:** RM

**DRAWN BY:** NSB

**DATE:** 2020-05-27      **SCALE:** AS SHOWN

**RMA PROJECT NUMBER:** 19046      **SHEET NUMBER:** A302

A2 19046\_246Gilmour\_DesignDevelopment\_2020\_04\_09.pln

1 WEST ELEVATION  
A302 SCALE: 1:100

D07-12-19-0196