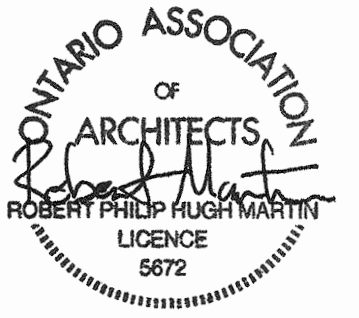


STAMP:



**CLIENT:**  
EPCON Enterprises Limited  
1566 Lapierre Avenue, Ottawa, ON - K1Z 7T2

**AGENT:**  
Novatech Engineering Consultants Limited  
240 Michael Cowpland Drive, Suite 200, Ottawa, ON - K2M 1P6

**CIVIL ENGINEER:**  
Novatech Engineering Consultants Limited  
240 Michael Cowpland Drive, Suite 200, Ottawa, ON - K2M 1P6

**PLANNER & LANDSCAPE:**  
Novatech Engineering Consultants Limited  
240 Michael Cowpland Drive, Suite 200, Ottawa, ON - K2M 1P6

**SURVEYOR:**  
Fairhall Moffatt & Woodland Limited  
600 Terry Fox Drive, Suite 100, Kanata, ON - K2L 4B6

**REVISIONS:**

No.	DESCRIPTION	DATE
04	ISSUED FOR SITE PLAN CONTROL RESPONSE	2020-04-16
03	ISSUED FOR COORDINATION	2020-03-30
02	ISSUED FOR SITE PLAN CONTROL	2019-11-19
01	ISSUED FOR COORDINATION	2019-11-05

DRAWINGS COPYRIGHT ROBERTSON MARTIN ARCHITECTS.  
DO NOT COPY. DO NOT SCALE DRAWINGS.  
ALL DIMENSIONS TO BE CHECKED AND VERIFIED ON SITE.

**NORTH:**

**PROJECT:**  
**22 UNIT MID-RISE APARTMENT DWELLING**  
246 Gilmour Street

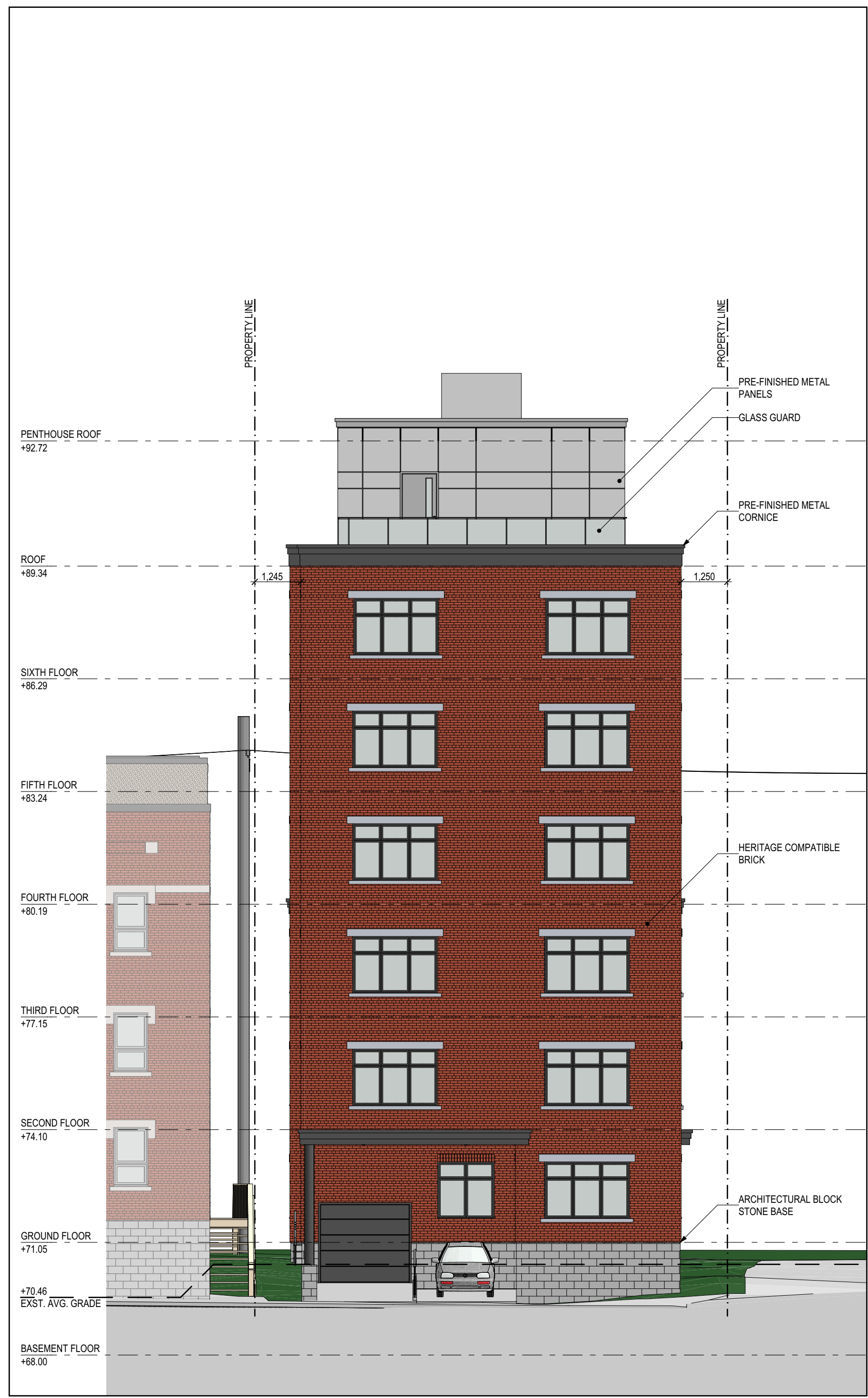
**DRAWING:**  
**NORTH AND SOUTH ELEVATIONS**

**DESIGNED BY:** SD + NSB  
**APPROVED BY:** RM

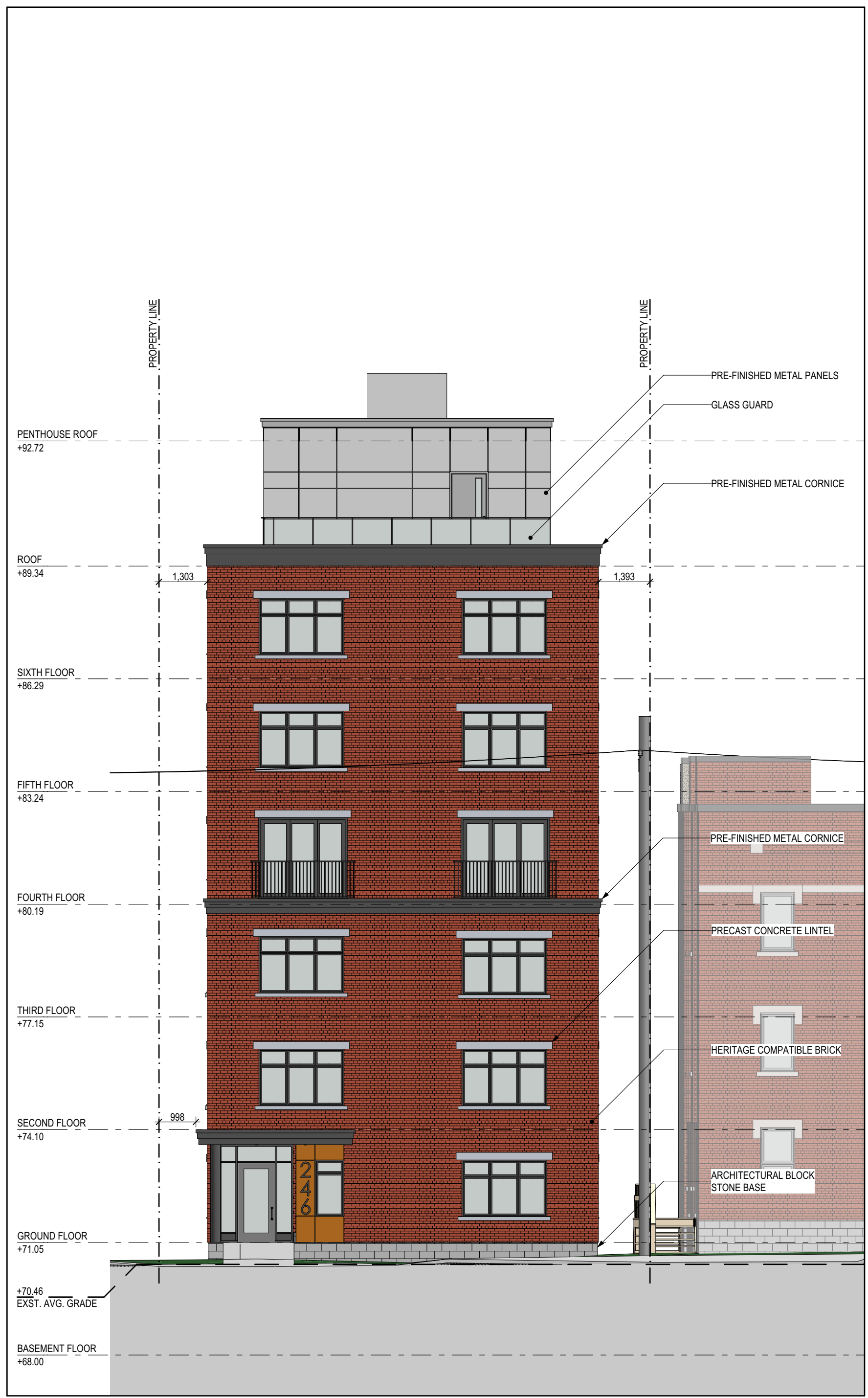
**DRAWN BY:** NSB

**DATE:** 2020-04-16  
**SCALE:** AS SHOWN

**RMA PROJECT NUMBER:** 19046  
**SHEET NUMBER:** A300



**2 SOUTH ELEVATION**  
SCALE: 1:100

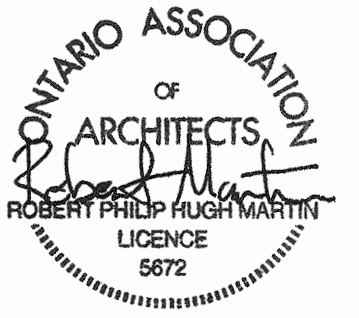


**1 NORTH ELEVATION**  
SCALE: 1:100

A2 19046\_246Gilmour\_DesignDevelopment\_2020\_04\_09.pln

D07-12-19-0196

STAMP:



**CLIENT:**  
EPCON Enterprises Limited  
1566 Lapierre Avenue, Ottawa, ON - K1Z 7T2

**AGENT:**  
Novatech Engineering Consultants Limited  
240 Michael Cowpland Drive, Suite 200, Ottawa, ON - K2M 1P6

**CIVIL ENGINEER:**  
Novatech Engineering Consultants Limited  
240 Michael Cowpland Drive, Suite 200, Ottawa, ON - K2M 1P6

**PLANNER & LANDSCAPE:**  
Novatech Engineering Consultants Limited  
240 Michael Cowpland Drive, Suite 200, Ottawa, ON - K2M 1P6

**SURVEYOR:**  
Fairhall Moffatt & Woodland Limited  
600 Terry Fox Drive, Suite 100, Kanata, ON - K2L 4B6

REVISIONS:

No.	DESCRIPTION	DATE
04	ISSUED FOR SITE PLAN CONTROL RESPONSE	2020-04-16
03	ISSUED FOR COORDINATION	2020-03-30
02	ISSUED FOR SITE PLAN CONTROL	2019-11-19
01	ISSUED FOR COORDINATION	2019-11-05

DRAWINGS COPYRIGHT ROBERTSON MARTIN ARCHITECTS.

DO NOT COPY. DO NOT SCALE DRAWINGS.  
ALL DIMENSIONS TO BE CHECKED AND VERIFIED ON SITE.

NORTH:

PROJECT:

**22 UNIT MID-RISE APARTMENT DWELLING**

246 Gilmour Street

DRAWING:

**EAST ELEVATION**

DESIGNED BY: SD + NSB  
APPROVED BY: RM

DRAWN BY: NSB

DATE: 2020-04-16  
SCALE: AS SHOWN

RMA PROJECT NUMBER: 19046  
SHEET NUMBER: A301

19046

A301

D07-12-19-0196

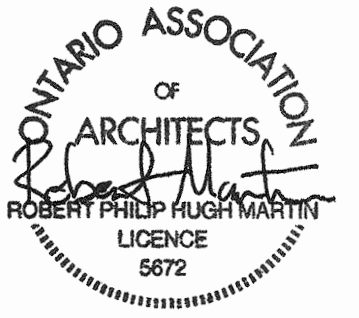
A2 19046\_246Gilmour\_DesignDevelopment\_2020\_04\_09.pln



**1 EAST ELEVATION**  
SCALE: 1:100



STAMP:



**CLIENT:**  
EPCON Enterprises Limited  
1566 Lapierre Avenue, Ottawa, ON - K1Z 7T2

**AGENT:**  
Novatech Engineering Consultants Limited  
240 Michael Cowpland Drive, Suite 200, Ottawa, ON - K2M 1P6

**CIVIL ENGINEER:**  
Novatech Engineering Consultants Limited  
240 Michael Cowpland Drive, Suite 200, Ottawa, ON - K2M 1P6

**PLANNER & LANDSCAPE:**  
Novatech Engineering Consultants Limited  
240 Michael Cowpland Drive, Suite 200, Ottawa, ON - K2M 1P6

**SURVEYOR:**  
Fairhall Moffatt & Woodland Limited  
600 Terry Fox Drive, Suite 100, Kanata, ON - K2L 4B6

**REVISIONS:**

No.	DESCRIPTION	DATE
04	ISSUED FOR SITE PLAN CONTROL RESPONSE	2020-04-16
03	ISSUED FOR COORDINATION	2020-03-30
02	ISSUED FOR SITE PLAN CONTROL	2019-11-19
01	ISSUED FOR COORDINATION	2019-11-05

DRAWINGS COPYRIGHT ROBERTSON MARTIN ARCHITECTS.  
DO NOT COPY. DO NOT SCALE DRAWINGS.  
ALL DIMENSIONS TO BE CHECKED AND VERIFIED ON SITE.

**NORTH:**

**PROJECT:**

**22 UNIT MID-RISE APARTMENT DWELLING**

246 Gilmour Street

**DRAWING:**

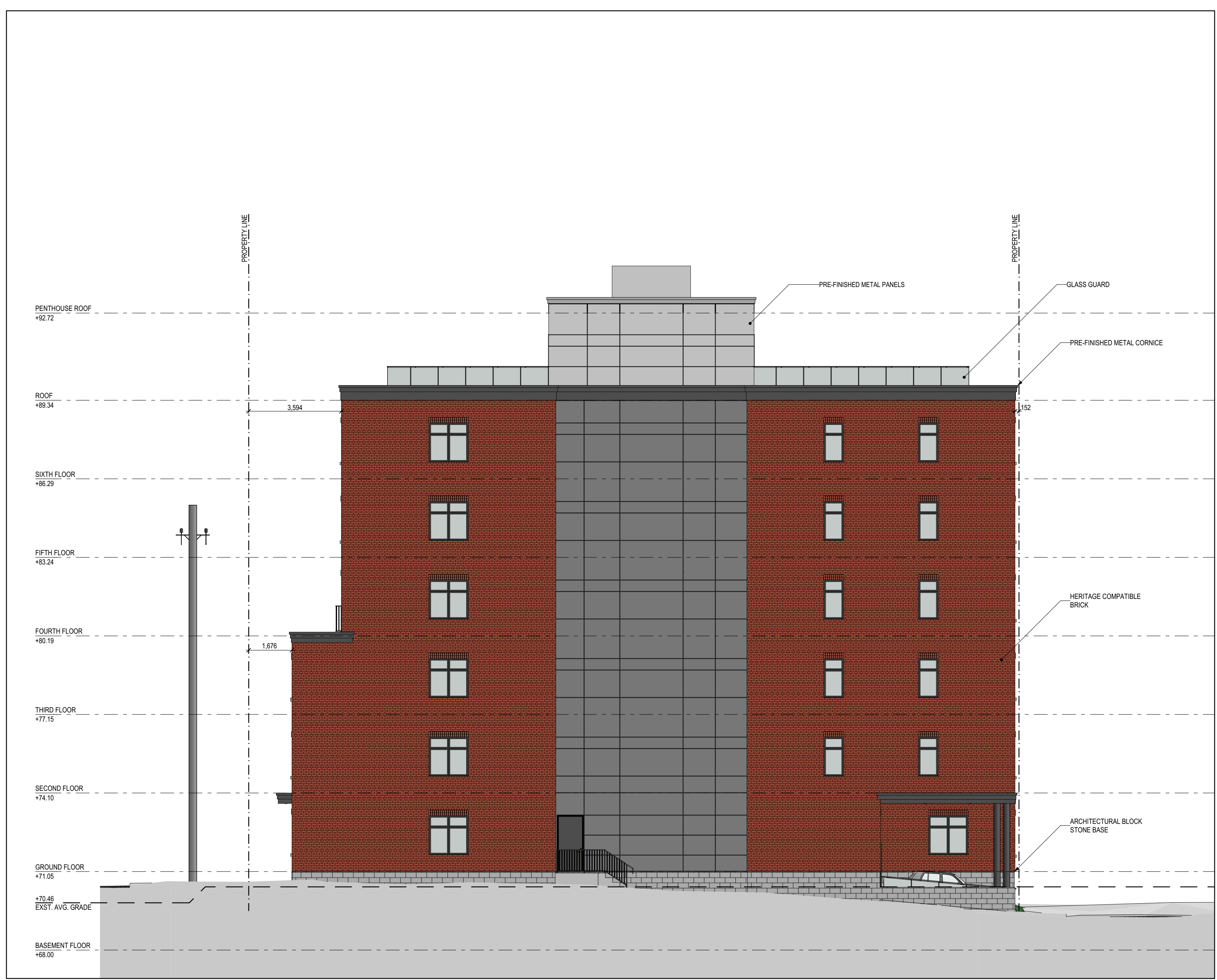
**WEST ELEVATION**

**DESIGNED BY:** SD + NSB      **APPROVED BY:** RM

**DRAWN BY:** NSB

**DATE:** 2020-04-16      **SCALE:** AS SHOWN

**RMA PROJECT NUMBER:** 19046      **SHEET NUMBER:** A302



A2 19046\_246Gilmour\_DesignDevelopment\_2020\_04\_09.pln

**1**  
**A302** WEST ELEVATION  
SCALE: 1:100

**D07-12-19-0196**