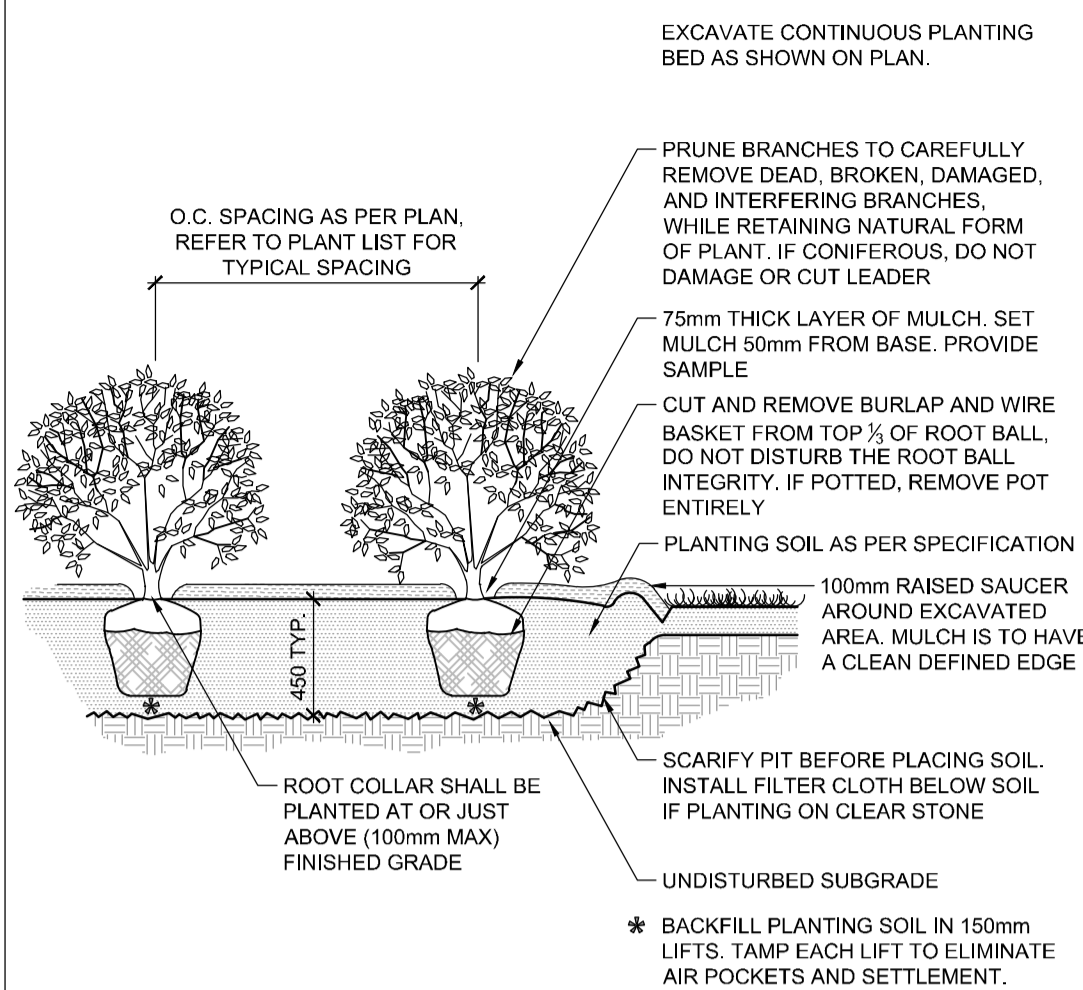


PROPOSED 6-STORY RESIDENTIAL DEVELOPMENT  
 FFE=71.05  
 TF=71.05  
 BFE=68.00  
 USF=67.54  
 #246 GILMOUR

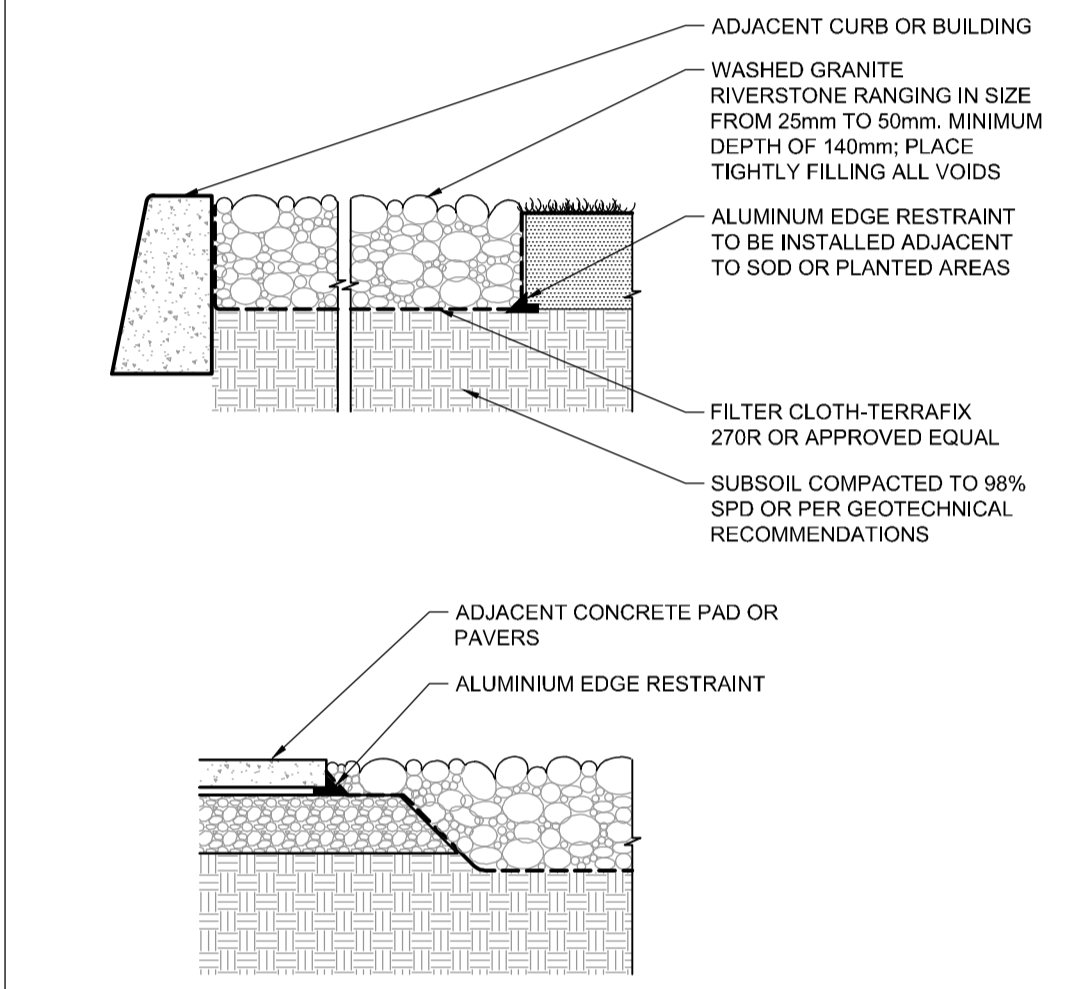
PROPOSED 1.2m HIGH CHAIN-LINK FENCE TO BE ON THE PROPERTY LINE AND TO REPLACE THE EXISTING FENCE

118221 - 246 Gilmour Street - Plant List

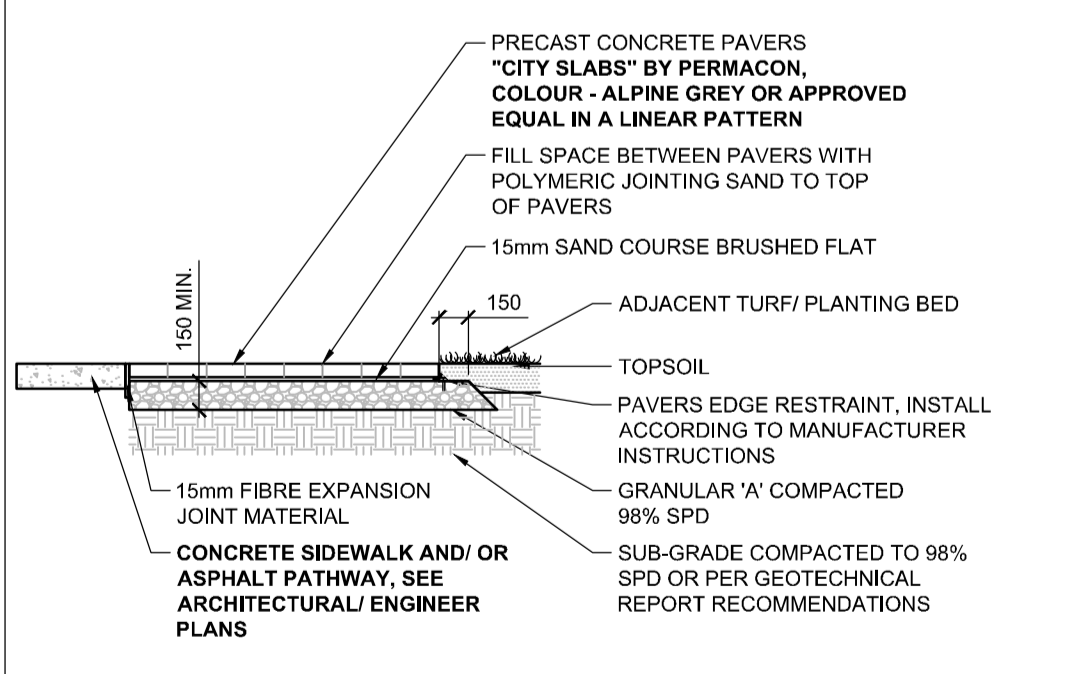
KEY	QTY	BOTANICAL NAME	COMMON NAME	SIZE	COND	SPACING
<b>Deciduous Shrubs</b>						
Alr	2	<i>Amelanchier alnifolia</i> 'Regent'	Saskatoon Serviceberry	60cm HT	PT	As Shown
Hpi	25	<i>Hydrangea paniculata</i> 'Invobo'	Bobo Dwarf Hydrangea	40cm HT	PT	90cm O.C.
Rag	23	<i>Rhus aromatica</i> 'Gro-Low'	Gro-Low Fragrant Sumac	40cm HT	PT	120cm O.C.
<b>Perennials</b>						
bmj	17	<i>Brunnera macrophylla</i> 'Jack Frost'	Jack Frost Siberian Bugloss	1g	PT	45cm O.C.
gmb	54	<i>Geranium macrorrhizum</i> 'Bevans'	Bevans Variety	1g	PT	45cm O.C.
hfb	19	<i>Hosta</i> 'Fragrant Blue'	Fragrant Bouquet Hosta	1g	PT	90cm O.C.



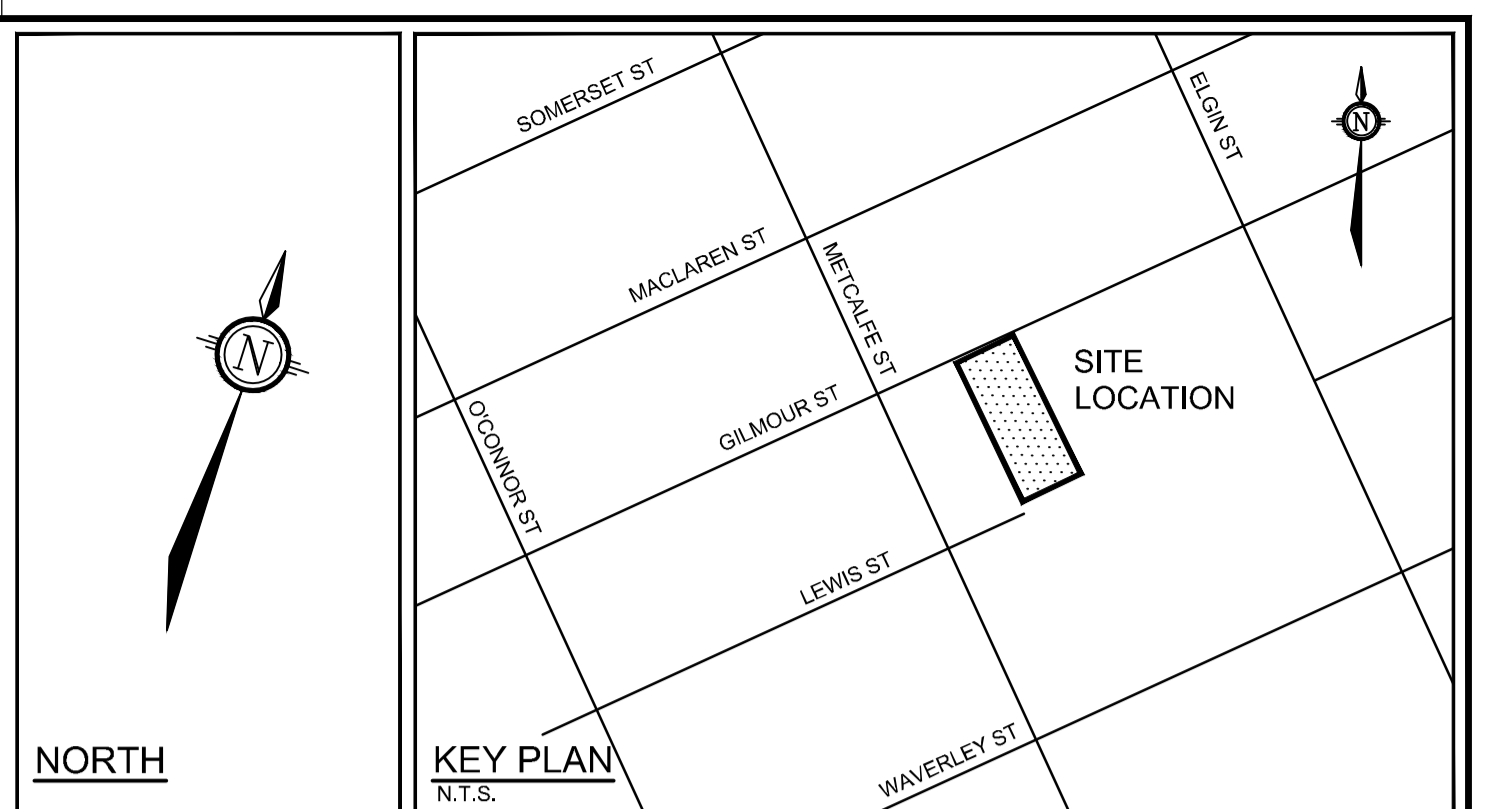
SHRUB AND PERENNIAL PLANTING D1



RIVERSTONE D2



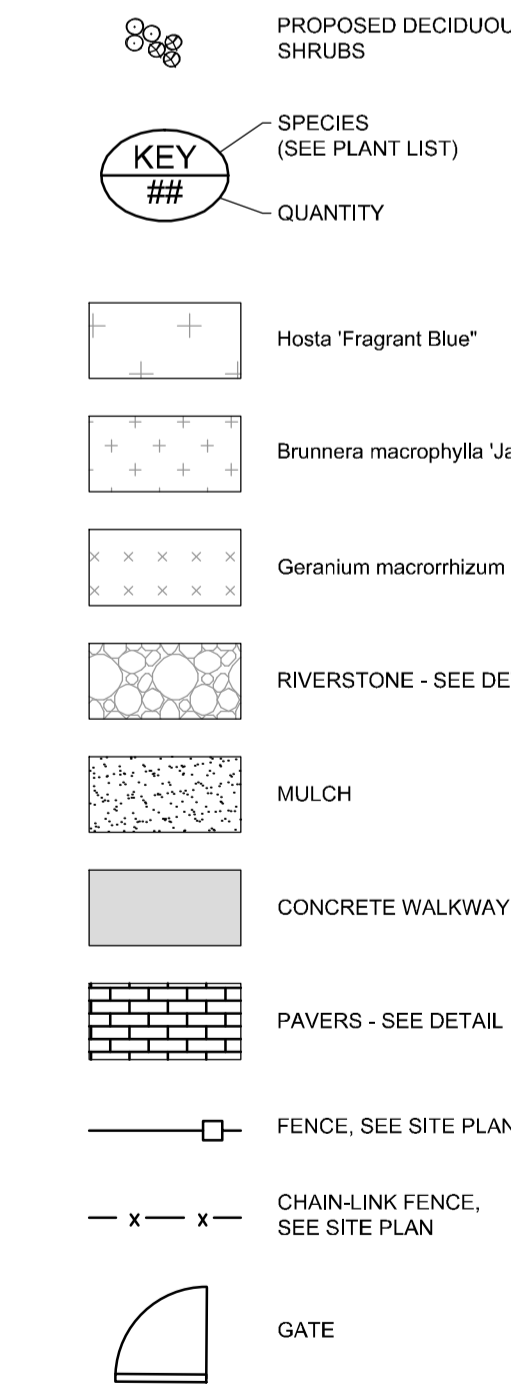
PAVERS D3



PLANTING NOTES

- This drawing shall be read in conjunction with all relevant Architectural, Engineering, and related drawings and documents. Refer to Engineering Drawings for Grading. Provide drainage as indicated in grading plan. Round all tops and toes of slopes, smoothly. Compact all areas to 95% Standard Proctor Density unless otherwise noted.
- Refer to Architectural Drawings for site layout.
- Refer to Engineering Drawings for site servicing.
- Contractor must contact utility companies for locates prior to excavation or planting.
- It is essential to use the plans and details in conjunction with the specifications and notes.
- Existing trees to be retained shall be protected according to the contract detail and specifications.
- Plant material shall be No. 1 Grade and shall comply with Canadian Standards for Nursery Stock (latest edition) published by the Canadian Nursery Landscape Association.
- Use plant material with strong fibrous root system free of disease, defects or injuries, and structurally sound. Use trees with straight trunks, well and characteristically branched for species. Obtain approval from consultant of plant material at source prior to digging. All trees and shrubs shall be container grown, potted, W/B or B/B, as indicated on Plant List. Bare root planting will only be acceptable for certain species and as approved by the Landscape Architect. Plant material substitutions shall not be permitted without the written approval from the consultant, with 48 hours notice, prior to shipping plant material.
- Plant locations are schematic / approximate only. Contractor shall stake out locations on site for approval by the Landscape Architect prior to installation. The illustrated number of plants shown in the Planting Plan supersedes the estimated number in the Plant List. Contractor to report any discrepancies to the Landscape Architect prior to installation. Contractor will assume full responsibility if the Landscape Architect is not notified.
- Shrubs, Perennials, Vines, and Groundcovers shall be planted in a continuous planting bed of 450mm depth with approved topsoil covered with 75mm depth shredded bark mulch.
- Ensure plant material is thoroughly watered following planting. Monitor material and ensure adequate moisture until acceptance.
- Sod and/or seed areas to receive 100mm depth topsoil as specified. Sod shall be No. 1 Kentucky Bluegrass Sod grown from minimum mixture of 3 Kentucky Bluegrass cultivars. Quality and source shall comply with Canadian Standards for Nursery Stock, Section 17, (latest edition) published by the Canadian Nursery Landscape Association. Unless otherwise specified, turf is to be maintained by the contractor until a second cutting is accepted by the Landscape Architect.
- Apply the following mineral fertilizer unless soil tests show other requirements: Sodded areas - (8-32-16) 8% Nitrogen, 32% Phosphorus, 16% Potash at a rate of 350kg/ha. - Planting Beds - (8-32-16) - 8% Nitrogen, 32% Phosphorus, 16% Potash as per manufacturer specifications. Reinststate all areas damaged or disturbed beyond the Limit of Work.

LANDSCAPE LEGEND:



SAIDE SAYAH  
 MANAGER, CENTRAL BRANCH  
 PLANNING, INFRASTRUCTURE & ECONOMIC  
 DEVELOPMENT DEPARTMENT, CITY OF OTTAWA

APPROVED  
 By Saide Sayah at 4:52 pm, Oct 01, 2020

NOTE:  
 THE POSITION OF ALL POLE LINES, CONDUITS, WATERMANS, SEWERS AND OTHER UNDERGROUND AND OVERGROUND UTILITIES AND STRUCTURES IS NOT NECESSARILY SHOWN ON THE CONTRACT DRAWINGS, AND WHERE SHOWN, THE ACCURACY OF THE POSITION OF SUCH UTILITIES AND STRUCTURES IS NOT GUARANTEED, BEFORE STARTING WORK, DETERMINE THE EXACT LOCATION OF ALL SUCH UTILITIES AND STRUCTURES AND ASSUME ALL LIABILITY FOR DAMAGE TO THEM.

OWNER INFORMATION  
 EPCON ENTERPRISES LTD.  
 1566 LAPERRIERE AVE.  
 OTTAWA, ONTARIO, K1Z 7T2  
 MR. DOMENIC IDONE  
 PHONE: (613) 325-3416  
 IDONEDOM@GMAIL.COM

No.	REVISION	DATE	BY
3	ISSUED FOR SITE PLAN	MAY 26/20	RGJ
2	REVISED PER CITY COMMENTS	APR 16/20	RGJ
1	ISSUED FOR SITE PLAN APPLICATION	NOV 26/19	RGJ

SCALE	DESIGN	CHECKED	DRAWN	APPROVED
1:100	KEW	RGJ	KEW	RGJ

FOR REVIEW ONLY

NOVATECH  
 Engineers, Planners & Landscape Architects  
 Suite 200, 240 Michael Cowpland Drive  
 Ottawa, Ontario, Canada K2M 1P6  
 Telephone (613) 254-9643  
 Facsimile (613) 254-5867  
 Website www.novatech-eng.com

LOCATION CITY OF OTTAWA 246 GILMOUR STREET	PROJECT No. 118221
DRAWING NAME LANDSCAPE PLAN	REV REV # 3
	DRAWING No. 118221-L1