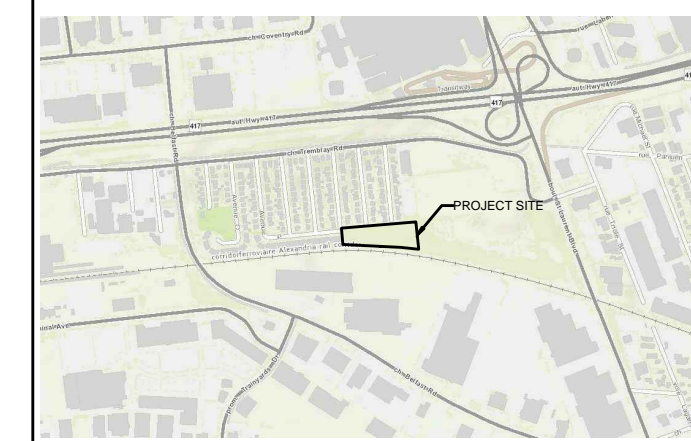


GENERAL ARCHITECTURAL NOTES:

- This drawing is the property of the Architect and may not be reproduced or used without the expressed consent of the Architect.
- Drawings are not to be scaled. The Contractor is responsible for checking and verifying all levels and dimensions and shall report all discrepancies to the Architect and obtain clarification prior to commencing work.
- Upon notice in writing, the Architect will provide written/graphic clarification or supplementary information regarding the intent of the Contract Documents.
- The Architectural drawings are to be read in conjunction with all other Contract Documents including Project Manuals and the Structural, Mechanical and Electrical Drawings.
- Positions of proposed or finished Mechanical or Electrical devices, fittings and fixtures are indicated on the Architectural Drawings. Locations shown on the Architectural Drawings shall govern over Mechanical and Electrical Drawings. Mechanical and Electrical items not clearly located will be located as directed by the Architect.
- These documents are not to be used for construction unless specifically noted for such purpose.



**CLV GROUP**  
 CLV GROUP  
 485 Bank Street, Suite 200  
 Ottawa, Ontario  
 K2P 1Z2

**REVISION RECORD**

NO.	DESCRIPTION	DATE
1	ISSUED FOR SITE PLAN APPROVAL	2019-10-28
2	ISSUED FOR REVIEW	2019-10-01
3	ISSUED FOR COORDINATION	2019-04-30

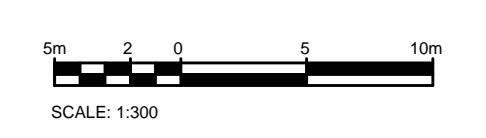
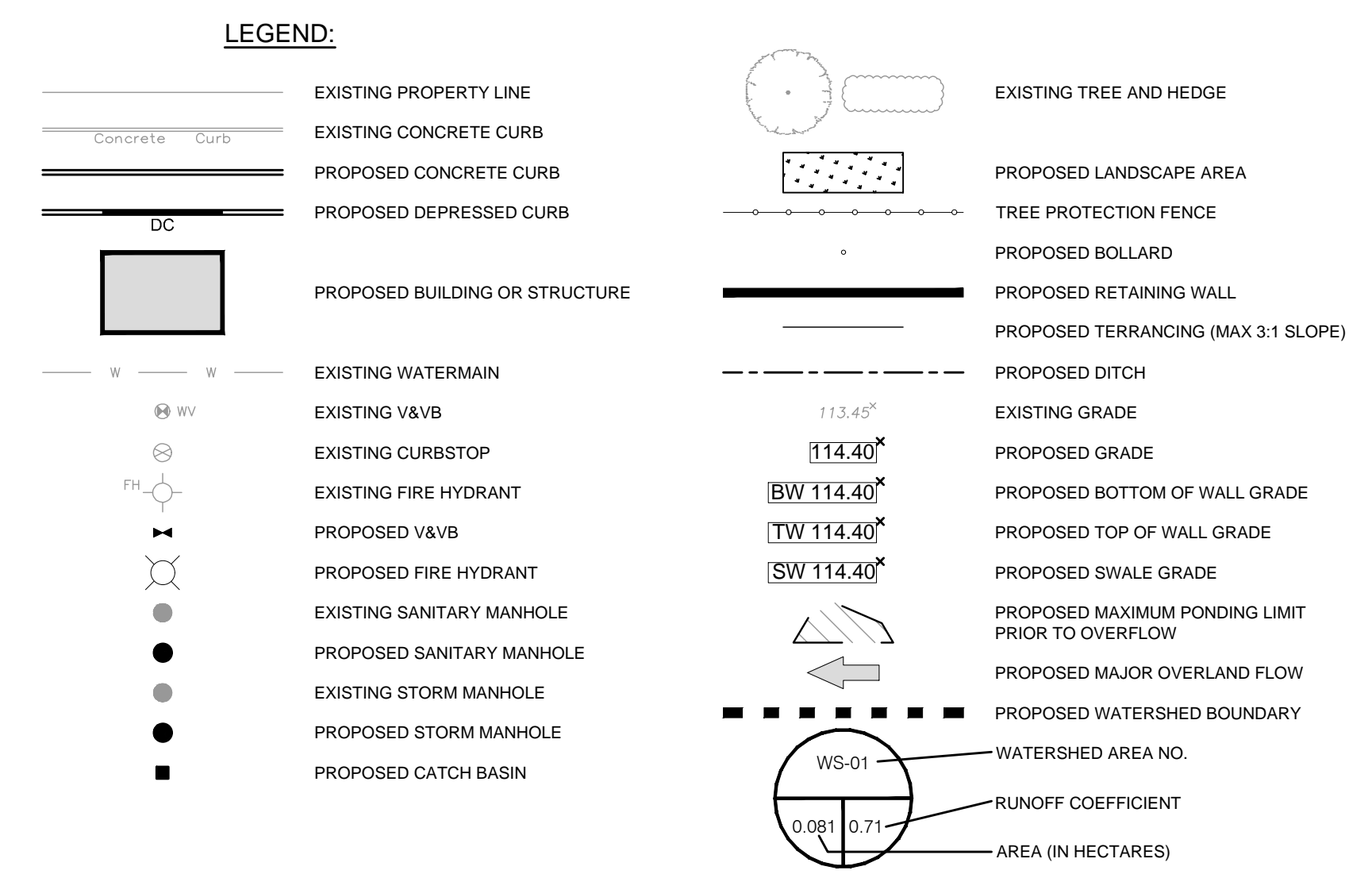
**ISSUE RECORD**

NO.	DESCRIPTION	DATE
1	ISSUED FOR SITE PLAN APPROVAL	2019-10-28
2	ISSUED FOR REVIEW	2019-10-01
3	ISSUED FOR COORDINATION	2019-04-30

**REGISTERED PROFESSIONAL ENGINEER**  
 M. MacSween  
 M.E. MACSWEEN  
 100104372  
 October 28, 2019  
 PROVINCE OF ONTARIO

- NOTES: GENERAL**
- CONTRACTOR IS RESPONSIBLE FOR ALL LAYOUT FOR CONSTRUCTION PURPOSES.
  - ALL ELEVATIONS ARE GEODETIC AND UTILIZE METRIC UNITS.
  - JOB BENCH MARK - REFER TO SURVEY BY ADV LTD. CONFIRM WITH CONTRACT ADMINISTRATOR PRIOR TO UTILIZATION OF BENCH MARK.
  - ALL GROUND SURFACES SHALL BE EVENLY GRADED WITHOUT PONDING AREAS AND WITHOUT LOW POINTS EXCEPT WHERE APPROVED SWALE OR CATCH BASIN OUTLETS ARE PROVIDED.
  - STRIP AND REMOVE ALL TOPSOIL FROM IMPROVED AREAS.
  - COORDINATE AND SCHEDULE ALL WORK WITH OTHER TRADES AND CONTRACTORS.
  - ALL EDGES OF DISTURBED PAVEMENT SHALL BE SAW CUT TO FORM A NEAT AND STRAIGHT LINE PRIOR TO PLACING NEW PAVEMENT. PAVEMENT REINSTATEMENT SHALL BE WITH STEP JOINTS OF 500mm WIDTH MINIMUM IN ACCORDANCE WITH CITY OF OTTAWA STANDARD R10. CURBS TO BE CONCRETE BARRIER, CONSTRUCTED AS PER CITY OF OTTAWA DETAIL SC1.1. ELEVATIONS AT CURB INDICATE THE GRADE AT THE FINISHED ROAD SURFACE UNLESS NOTED OTHERWISE.
  - RESTORE PAVEMENT STRUCTURE AND SURFACES ON EXISTING ROADS TO A CONDITION AT LEAST EQUAL TO ORIGINAL AND TO THE SATISFACTION OF THE MUNICIPAL AUTHORITIES.
  - ALL MATERIAL SUPPLIED AND PLACED FOR PARKING LOT AND ACCESS ROAD CONSTRUCTION SHALL BE TO OPSS STANDARDS AND SPECIFICATIONS UNLESS OTHERWISE NOTED. CONSTRUCTION TO OPSS 206, 310 & 314. MATERIALS TO OPSS 1001, 1003 & 1010.
  - ADJUTING PROPERTY GRADE TO BE MATCHED.
  - OBTAIN AND PAY FOR ALL NECESSARY PERMITS AND APPROVALS FROM THE MUNICIPAL AUTHORITIES PRIOR TO COMMENCING CONSTRUCTION.
  - MINIMIZE DISTURBANCE TO EXISTING VEGETATION DURING THE EXECUTION OF ALL WORKS.
  - FILTER FABRIC TO BE INSTALLED AND MAINTAINED BETWEEN THE FRAME AND COVER OF ALL CATCHBASINS AND CATCHBASIN MANHOLES DURING THE CONSTRUCTION PERIOD TO MINIMIZE SEDIMENTS ENTERING THE STORM SEWER SYSTEM. ALL GRASSED AREAS MUST BE COMPLETED PRIOR TO THE REMOVAL OF THE FILTER FABRIC IN THE CATCH BASINS.
  - REMOVE FROM SITE ALL EXCESS EXCAVATED MATERIAL UNLESS OTHERWISE DIRECTED FROM THE ENGINEER. EXCAVATE AND REMOVE ALL ORGANIC MATERIAL AND DEBRIS LOCATED WITHIN THE PROPOSED BUILDING, PARKING AND ROADWAY LOCATIONS. ANY CONTAMINATED MATERIAL SHALL BE DISPOSED OF AT A LICENSED LANDFILL FACILITY.
  - THE APPROVAL OF THIS PLAN DOES NOT EXEMPT THE CONTRACTOR FROM THE REQUIREMENTS TO OBTAIN THE VARIOUS PERMITS/APPROVALS REQUIRED TO COMPLETE A CONSTRUCTION PROJECT, SUCH AS BUT NOT LIMITED TO: ROAD CUT PERMITS, SEWER PERMITS, WATER PERMIT, ETC.
  - AT PROPOSED UTILITY CONNECTION POINTS AND CROSSINGS (I.E. STORM SEWER, SANITARY SEWER, WATER, ETC) THE CONTRACTOR SHALL DETERMINE THE PRECISE LOCATION AND DEPTH AND SIZE OF EXISTING UTILITIES AND REPORT ANY DISCREPANCIES OR CONFLICTS TO THE ENGINEER BEFORE COMMENCING WORK. PROTECT AND ASSUME RESPONSIBILITY FOR ALL EXISTING UTILITIES.
  - REFER TO GEOTECHNICAL REPORT FOR SUBSURFACE CONDITIONS, CONSTRUCTION RECOMMENDATIONS, AND GEOTECHNICAL INSPECTION REQUIREMENTS.
  - REFER TO ARCHITECT AND LANDSCAPE ARCHITECTS DRAWINGS FOR BUILDING, LANDSCAPE, AND HARD SURFACE AREAS AND DIMENSIONS.

- NOTES: WATERMAIN**
- SUPPLY AND INSTALL ALL WATERMAIN AND APPURTENANCES IN ACCORDANCE WITH MOST CURRENT CITY OF OTTAWA STANDARDS AND SPECIFICATIONS.
  - ALL WATER MAIN TO BE INSTALLED AT MINIMUM COVER OF 2.4m BELOW FINISHED GRADE. WHERE REQUIRED, PROVIDE INSULATION IN ACCORDANCE WITH CITY OF OTTAWA STANDARDS W22 AND W23.
  - WATER MAIN BEDDING AS PER CITY OF OTTAWA STANDARD W17.
  - CONCRETE THRUST BLOCKS AND RESTRAINING AS PER DETAILS ON DRAWING C103.
  - CATHODIC PROTECTION REQUIRED FOR ALL IRON FITTINGS AS PER DETAILS ON DRAWING C103.
  - IF WATER MAIN MUST BE DEFLECTED TO MEET ALIGNMENT, ENSURE THAT THE AMOUNT OF DEFLECTION USED IS LESS THAN HALF THAT RECOMMENDED BY THE MANUFACTURER.
  - EXCAVATION, INSTALLATION, AND BACKFILL BY CONTRACTOR. CONNECTIONS AND SHUT-OFFS AT THE MAIN BY CITY.



**PARSONS**  
 1223 MICHAEL STREET, SUITE 100, OTTAWA, ONTARIO K1J 7T2  
 TEL: 613-738-4100 FAX: 613-738-1100

**project1 studio**  
 Project1 Studio Incorporated  
 (613) 255-3638 | info@project1studio.ca

**530 TREMBLAY**  
 530 TREMBLAY RD  
 Ottawa, ON

PROJ SCALE DRAWN REVIEWED  
 477074 1:300 SS MM

**DRAINAGE PLAN**

**C104**