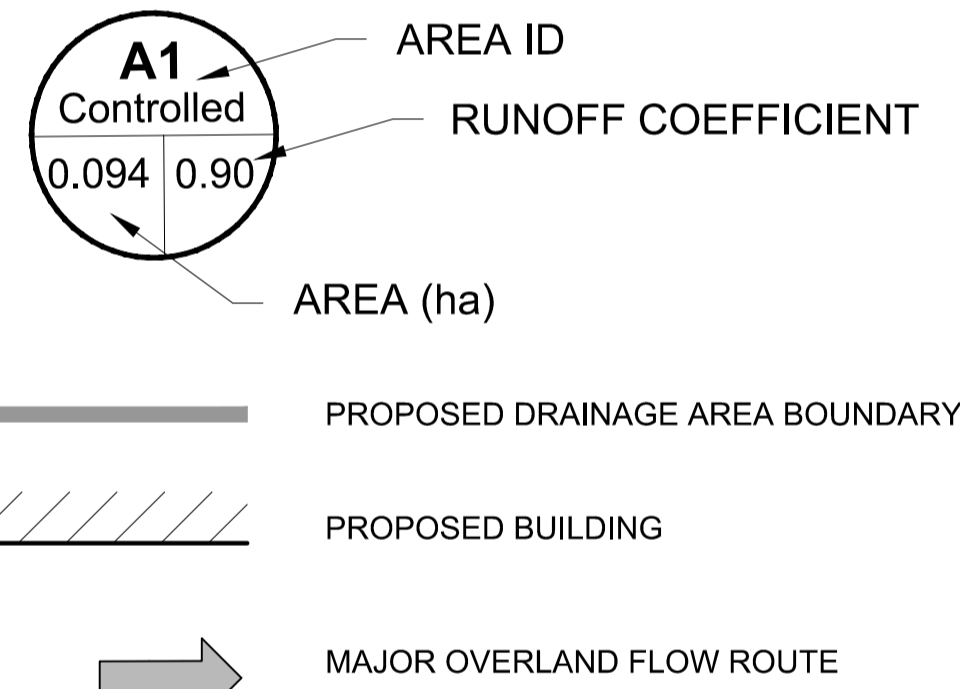
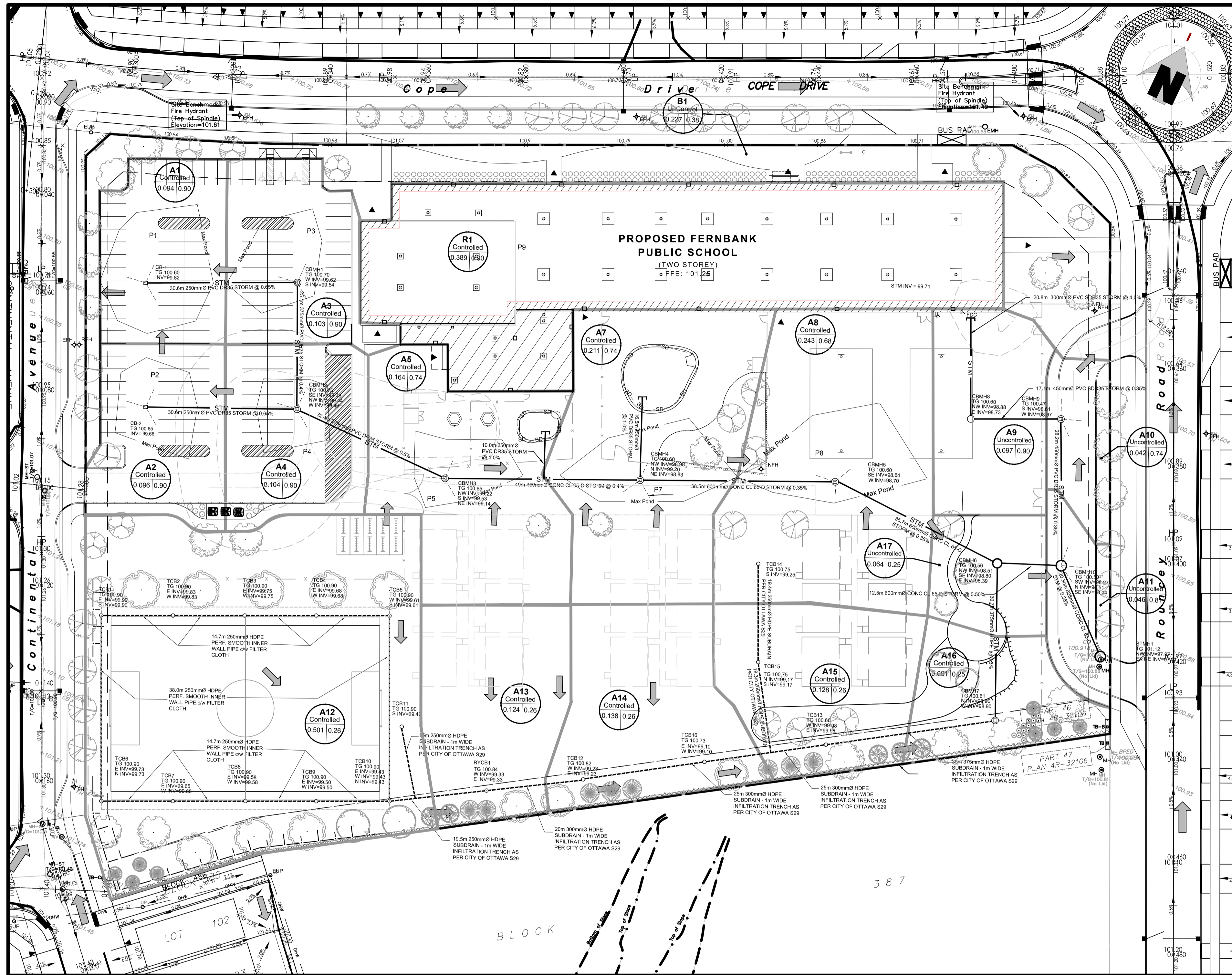
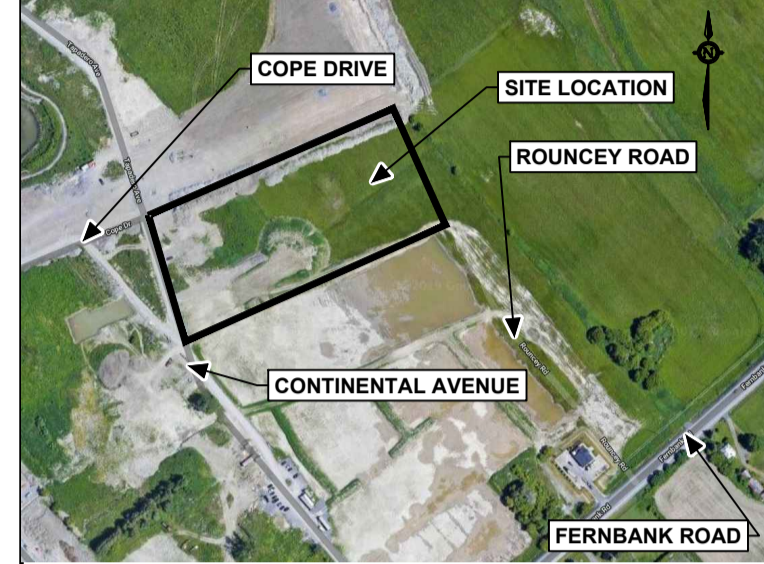


PONDING TABLE					
POND NO.	LOCATION	POND ELEV. (m)	TOP OF CB ELEV. (m)	POND DEPTH (m)	POND VOL. (m ³)
P1	CB1	100.85	100.60	0.25	37.93
P2	CB2	100.85	100.67	0.18	15.42
P3	CBM1	100.85	100.70	0.15	13.81
P4	CBM2	100.85	100.72	0.13	24.81
P5	CBM3	100.85	100.65	0.20	15.98
P7	CBM4	100.85	100.62	0.18	30.60
P8	CBM5	100.85	100.60	0.25	41.66
P9	ROOF			0.12	153.01
				Total=	333.22

NOTE: PONDING VOLUME CALCULATED BY MULTIPLYING THE PONDING AREA BY THE MAXIMUM PONDING DEPTH AND DIVIDING BY 3 FOR A CONICAL POND



Jp2g Consultants Inc.
ENGINEERS • PLANNERS • PROJECT MANAGERS
1150 Morrison Drive, Suite 410, Ottawa, ONT.
Phone: (613) 628-7800 Fax: (613) 628-2600



No.	DESCRIPTION	YYYY-MM-DD
4	REVISED PER CITY COMMENTS	2020-05-01
3	REVISED PER CITY COMMENTS	2020-02-18
2	ISSUED FOR BUILDING PERMIT	2019-12-19
1	ISSUED FOR SITE PLAN CONTROL	2019-11-28

N45 ARCHITECTURE INC.
43 Eccles Street, 2nd Floor - Ottawa, Ontario, K1R 6S3
tel. 613.224.0095 fax 613.224.9811

project
FERNBANK ELEMENTARY SCHOOL

480 COPE DRIVE, OTTAWA, ONTARIO

seal

APPROVED REFUSED

THIS 22 DAY OF October, 2020

Erin O'Connell
ERIN O'CONNELL, MCIP, RPP, MANAGER (A)
DEVELOPMENT REVIEW, WEST
PLANNING, INFRASTRUCTURE AND ECONOMIC
DEVELOPMENT DEPARTMENT, CITY OF OTTAWA

drawing title	
STORM DRAINAGE PLAN	
scale 1:500	drawn by M.S.
date DEC 2019	checked by B.K.
project number	drawing number SD1
CONTRACTOR TO VERIFY ALL DIMENSIONS AND NOTIFY THE ARCHITECT OF ANY DISCREPANCIES BEFORE WORK COMMENCES. DO NOT SCALE DRAWINGS.	
revision	