

PONDING TABLE						
POND NO.	AREA ID	LOCATION	PONDING ELEV. (m)	TOP OF CB ELEV. (m)	PONDING DEPTH (m)	PONDING VOL. (m ³)
P1	A1	CB1	100.85	100.60	0.25	35.21
P2	A2	CB2	100.90	100.67	0.23	31.99
P3	A3	CBM1	100.90	100.70	0.20	28.37
P4	A4	CBM2	100.92	100.72	0.20	41.03
P5	A5	CBM3	100.85	100.65	0.20	15.50
P6	A6	RYCB1	100.90	100.68	0.22	3.89

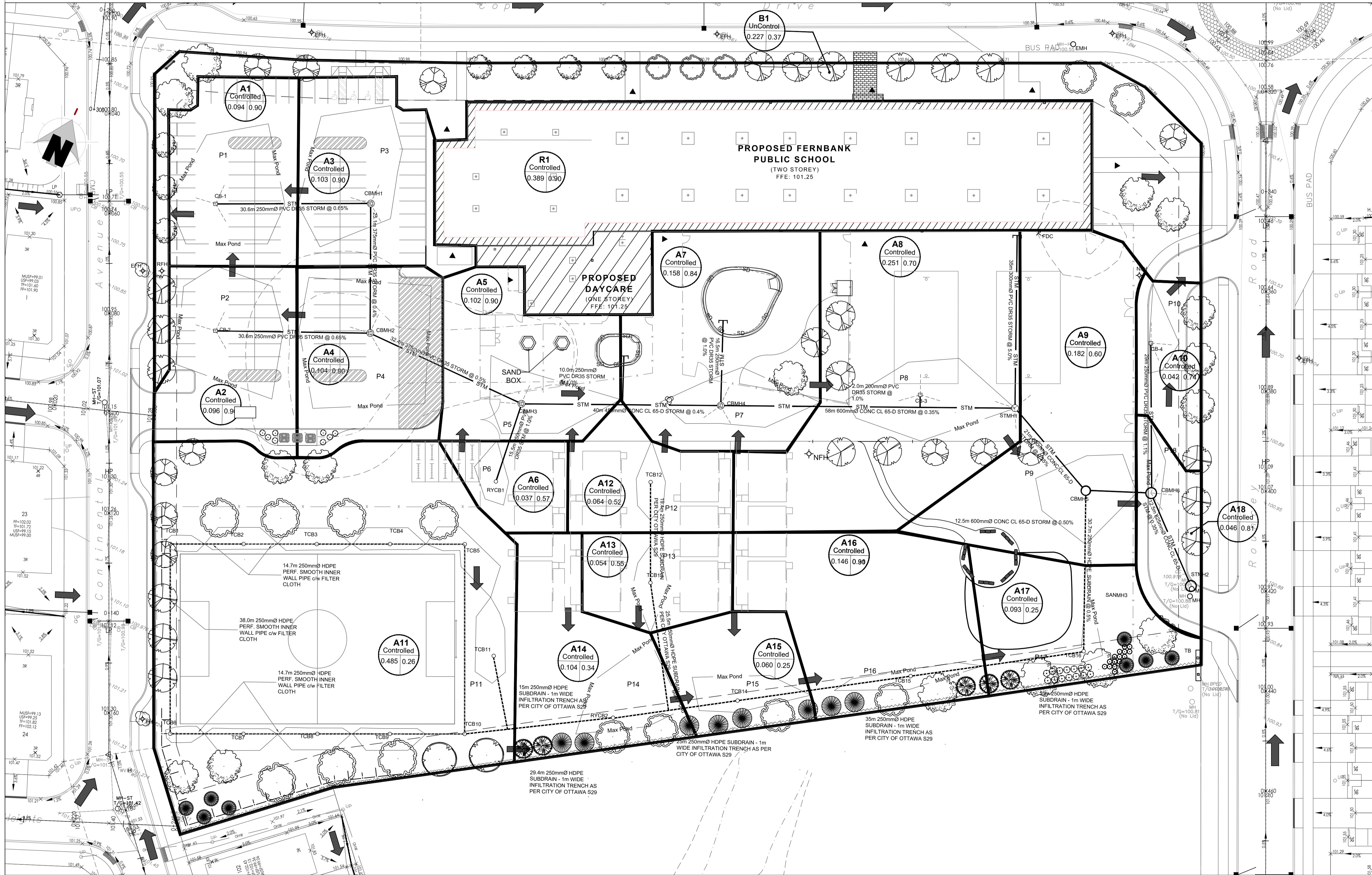
NOTE: PONDING VOLUME CALCULATED BY MULTIPLYING THE PONDING AREA BY THE MAXIMUM PONDING DEPTH AND DIVIDING BY 3 FOR A CONICAL POND

PONDING TABLE						
POND NO.	AREA ID	LOCATION	PONDING ELEV. (m)	TOP OF CB ELEV. (m)	PONDING DEPTH (m)	PONDING VOL. (m ³)
P7	A7	CBM4	100.75	100.60	0.15	11.20
P8	A8	CB3	100.70	100.55	0.15	16.95
P9	A9	CBM5	100.70	100.56	0.14	10.85
P10	A10	CB4	100.59	100.47	0.12	2.39
P11	A11	TCB1 - TCB11	100.96	100.90	0.06	10.36
P12	A12	TCB12	100.90	100.75	0.15	2.96

NOTE: PONDING VOLUME CALCULATED BY MULTIPLYING THE PONDING AREA BY THE MAXIMUM PONDING DEPTH AND DIVIDING BY 3 FOR A CONICAL POND

PONDING TABLE						
POND NO.	AREA ID	LOCATION	PONDING ELEV. (m)	TOP OF CB ELEV. (m)	PONDING DEPTH (m)	PONDING VOL. (m ³)
P13	A13	TCB13	100.90	100.75	0.15	3.61
P14	A14	RYCB2	100.89	100.76	0.13	10.00
P15	A15	TCB14	100.86	100.71	0.15	6.24
P16	A16	TCB15	100.81	100.66	0.15	3.76
P17	A17	TCB16	100.76	100.61	0.15	3.31
P18	A18	CBM6	100.62	100.50	0.12	5.41

NOTE: PONDING VOLUME CALCULATED BY MULTIPLYING THE PONDING AREA BY THE MAXIMUM PONDING DEPTH AND DIVIDING BY 3 FOR A CONICAL POND



No.	DESCRIPTION	DATE
1	ISSUED FOR SITE PLAN CONTROL	2019-11-28
	YYYY-MM-DD	

N45 ARCHITECTURE INC.
 43 Eccles Street, 2nd Floor - Ottawa, Ontario, K1R 6S3
 tel. 613.224.0095 fax 613.224.9811

project

drawing title	
STORM DRAINAGE PLAN	
scale 1:400	drawn by M.S.
date NOV 2019	checked by B.K.
project number	drawing number SD1
CONTRACTOR TO VERIFY ALL DIMENSIONS AND NOTIFY THE ARCHITECT OF ANY DISCREPANCIES BEFORE WORK COMMENCES. DO NOT SCALE DRAWINGS.	
	revision