

**OTTAWA - CARLETON DISTRICT SCHOOL BOARD**

**GENERAL NOTES**

- All general site information and conditions compiled from existing plans, surveys and consultant's field notes. Report all discrepancies prior to any work. No responsibility is born by the Consultant for unknown subsurface conditions.
- The location of the utilities is approximate only, and the exact location should be determined by consulting the municipal authorities and utility companies concerned. The Contractor shall prove the location of utilities and shall be responsible for adequate protection from damage.
- All dimensions shown are to be verified on site prior to any construction. No deviations are to be made from the layouts as shown on this plan without prior consultation with the Landscape Architect and Owner.
- Obtain approval of Landscape Architect for granular base and layout of all pavement areas prior to construction.
- Stake planting locations and receive approval of Landscape Architect, prior to excavation of any planting pits. No substitutions of plant material shall be made without prior approval of the Landscape Architect.
- Where clay is encountered proper drainage must be ensured in tree/shrub pits, prior to planting. Have method approved by Landscape Architect.
- All sodded areas to receive a minimum of 150mm of topsoil over graded sub-base. If sod with mesh is used, mesh to be removed completely during sodding operations. Sod shall come from an approved source and shall be laid within 24 hours of being cut in the nursery. Only nursery sod shall be used.
- Final subgrade is to be approved by the Landscape Architect prior to sod being laid.
- Maintain positive surface runoff through the entire construction period.
- Reinstate all areas and items damaged as a result of construction activities.

no.	revision	date
04	Issued for Site Plan Control	2020/05/06
03	Revised per SPC Comments	2020/02/18
02	Issued for Building Permit	2019/12/19
01	Issued for Site Plan Control	2019/11/25

**N45 ARCHITECTURE INC.**

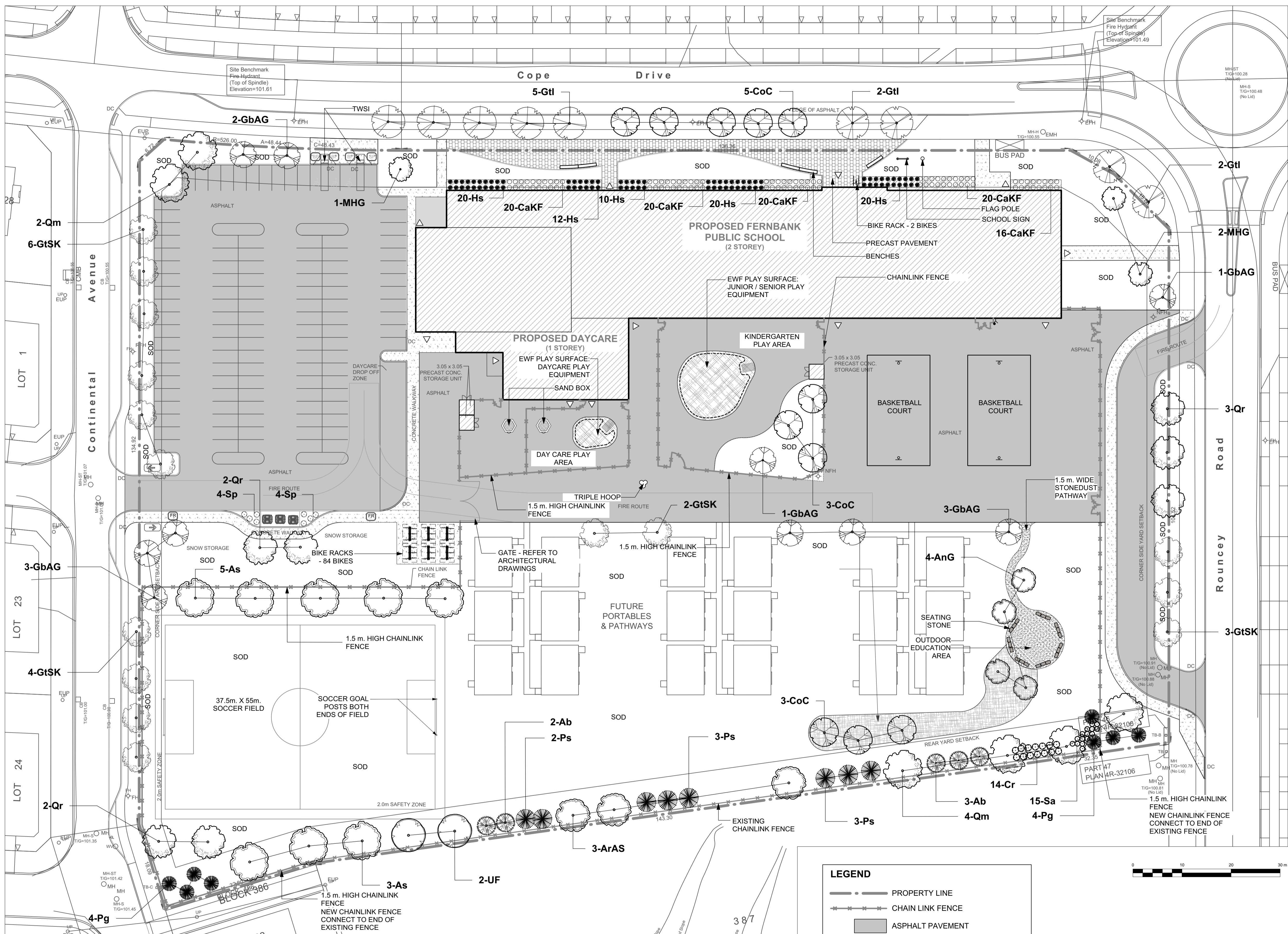
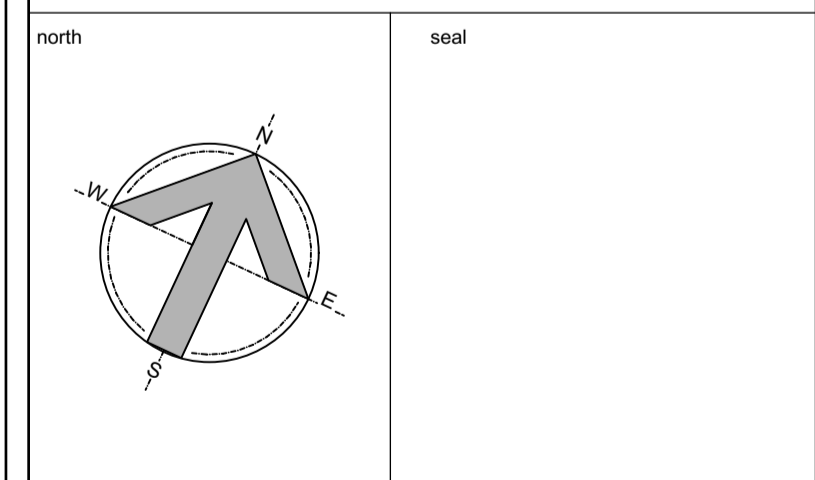
71 Bank Street, 7th Floor - Ottawa, Ontario, K1P 5N2  
tel. 613.224.0095 fax 613.224.9811

**Ruhland & Associates Ltd**

landscape architecture • urban design • site planning  
Ph 613-224-4744 Fx 613-224-1335 info@ralta.ca www.ralta.ca

**FERNBANK ELEMENTARY SCHOOL  
OTTAWA-CARLETON DISTRICT  
SCHOOL BOARD**

COPE DRIVE, OTTAWA, ONTARIO, K2S 1B6



**LANDSCAPE / PLANTING PLAN**  
Scale: 1:400

**LEGEND**

- PROPERTY LINE
- CHAIN LINK FENCE
- ASPHALT PAVEMENT
- CONCRETE PAVEMENT
- STONEDUST PATHWAY / PAVEMENT
- PRECAST PAVEMENT
- EFW PAYGROUND SURFACE
- REFORESTATION AREA

APPROVED  REFUSED

THIS 22 DAY OF October, 2020

*Erin O'Connell*

**ERIN O'CONNELL, MCIP, RPP, MANAGER (A)**  
DEVELOPMENT REVIEW, WEST  
PLANNING, INFRASTRUCTURE AND ECONOMIC  
DEVELOPMENT DEPARTMENT, CITY OF OTTAWA

**SITE SERVICING NOTE:**  
REFER TO JP2G CONSULTANT'S  
DRAWINGS FOR SITE  
SERVICING.

drawing title  
**LANDSCAPE / PLANTING PLAN**

scale	1:400	drawn by	AA / TF
date	01 NOV, 2019	checked by	MR
project number	N45 19-467	drawing number	<b>L-01</b>
RA	19-1596	revision	

CONTRACTOR TO VERIFY ALL DIMENSIONS AND NOTIFY THE ARCHITECT OF ANY DISCREPANCIES BEFORE WORK COMMENCES.

DO NOT SCALE DRAWINGS