

OTTAWA - CARLETON DISTRICT SCHOOL BOARD

GENERAL NOTES

- All general site information and conditions compiled from existing plans, surveys and consultant's field notes. Report all discrepancies prior to any work. No responsibility is born by the Consultant for unknown subsurface conditions.
- The location of the utilities is approximate only, and the exact location should be determined by consulting the municipal authorities and utility companies concerned. The Contractor shall prove the location of utilities and shall be responsible for adequate protection from damage.
- All dimensions shown are to be verified on site prior to any construction. No deviations are to be made from the layouts as shown on this plan without prior consultation with the Landscape Architect and Owner.
- Obtain approval of Landscape Architect for granular base and layout of all pavement areas prior to construction.
- Stake planting locations and receive approval of Landscape Architect, prior to excavation of any planting pits. No substitutions of plant material shall be made without prior approval of the Landscape Architect.
- Where clay is encountered proper drainage must be ensured in tree/shrub pits, prior to planting. Have method approved by Landscape Architect.
- All sodded areas to receive a minimum of 150mm of topsoil over graded sub-base. If sod with mesh is used, mesh to be removed completely during sodding operations. Sod shall come from an approved source and shall be laid within 24 hours of being cut in the nursery. Only nursery sod shall be used.
- Final subgrade is to be approved by the Landscape Architect prior to sod being laid.
- Maintain positive surface runoff through the entire construction period.
- Reinstate all areas and items damaged as a result of construction activities.

no.	revision	date
04	Issued for Site Plan Control	2020/05/06
03	Revised per SPC Comments	2020/02/18
02	Issued for Building Permit	2019/12/19
01	Issued for Site Plan Control	2019/11/25

N45 ARCHITECTURE INC.

71 Bank Street, 7th Floor - Ottawa, Ontario, K1P 5N2
tel. 613.224.0095 fax 613.224.9811

Ruhland & Associates Ltd

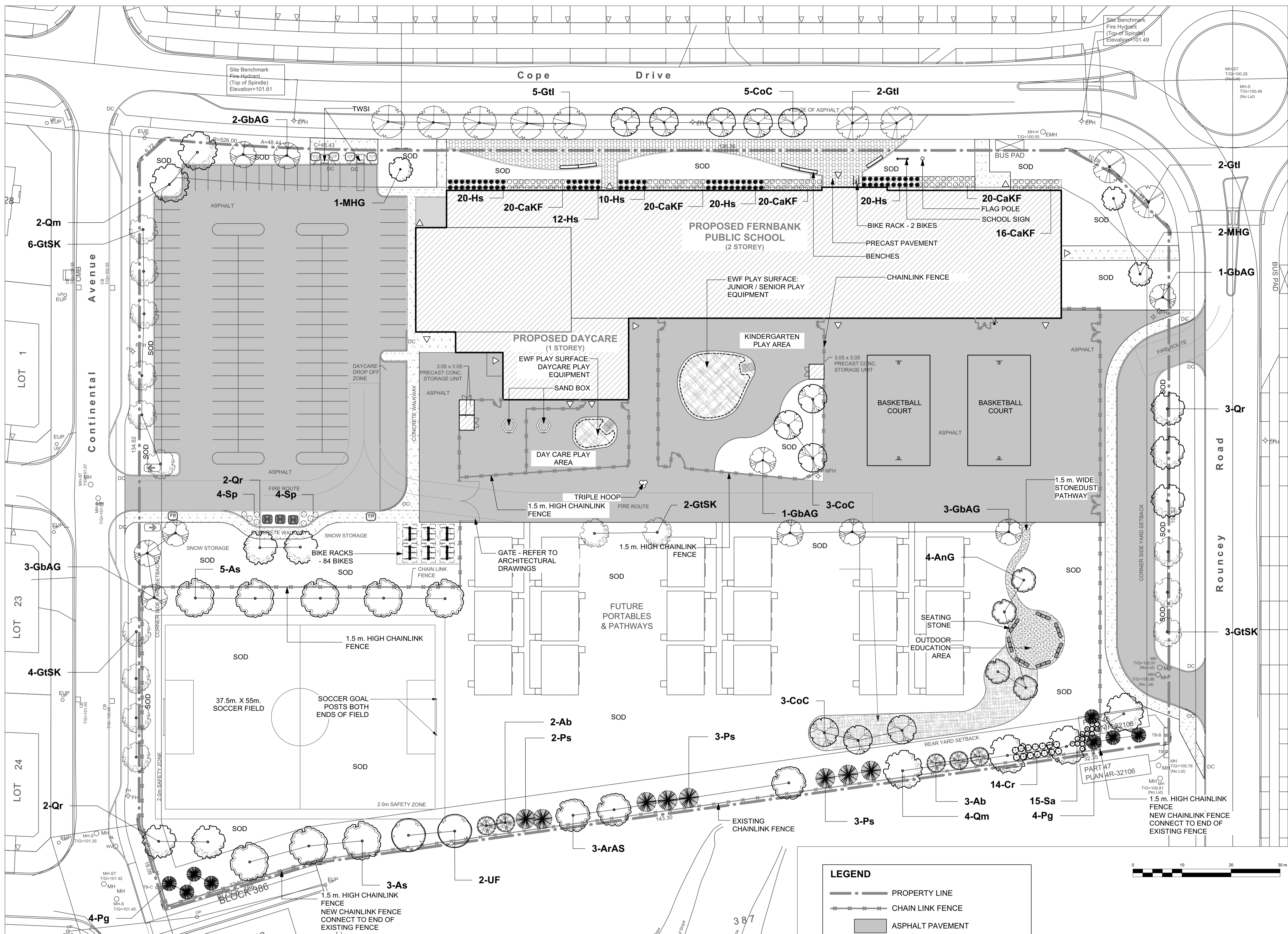
landscape architecture • urban design • site planning
Ph 613-224-4744 Fx 613-224-1135 info@ralta.ca www.ralta.ca

FERNBANK ELEMENTARY SCHOOL
OTTAWA-CARLETON DISTRICT
SCHOOL BOARD

COPE DRIVE, OTTAWA, ONTARIO, K2S 1B6

north

2020-05-06



LANDSCAPE / PLANTING PLAN
Scale: 1:400

LEGEND

- PROPERTY LINE
- CHAIN LINK FENCE
- ASPHALT PAVEMENT
- CONCRETE PAVEMENT
- STONEDUST PATHWAY / PAVEMENT
- PRECAST PAVEMENT
- EFW PAYGROUND SURFACE
- REFORESTATION AREA

SITE SERVICING NOTE:
REFER TO JP2G CONSULTANT'S DRAWINGS FOR SITE SERVICING.

drawing title
LANDSCAPE / PLANTING PLAN

scale: 1:400 drawn by: AA / TF

date: 01 NOV, 2019 checked by: MR

project number: N45 19-467 drawing number: L-01

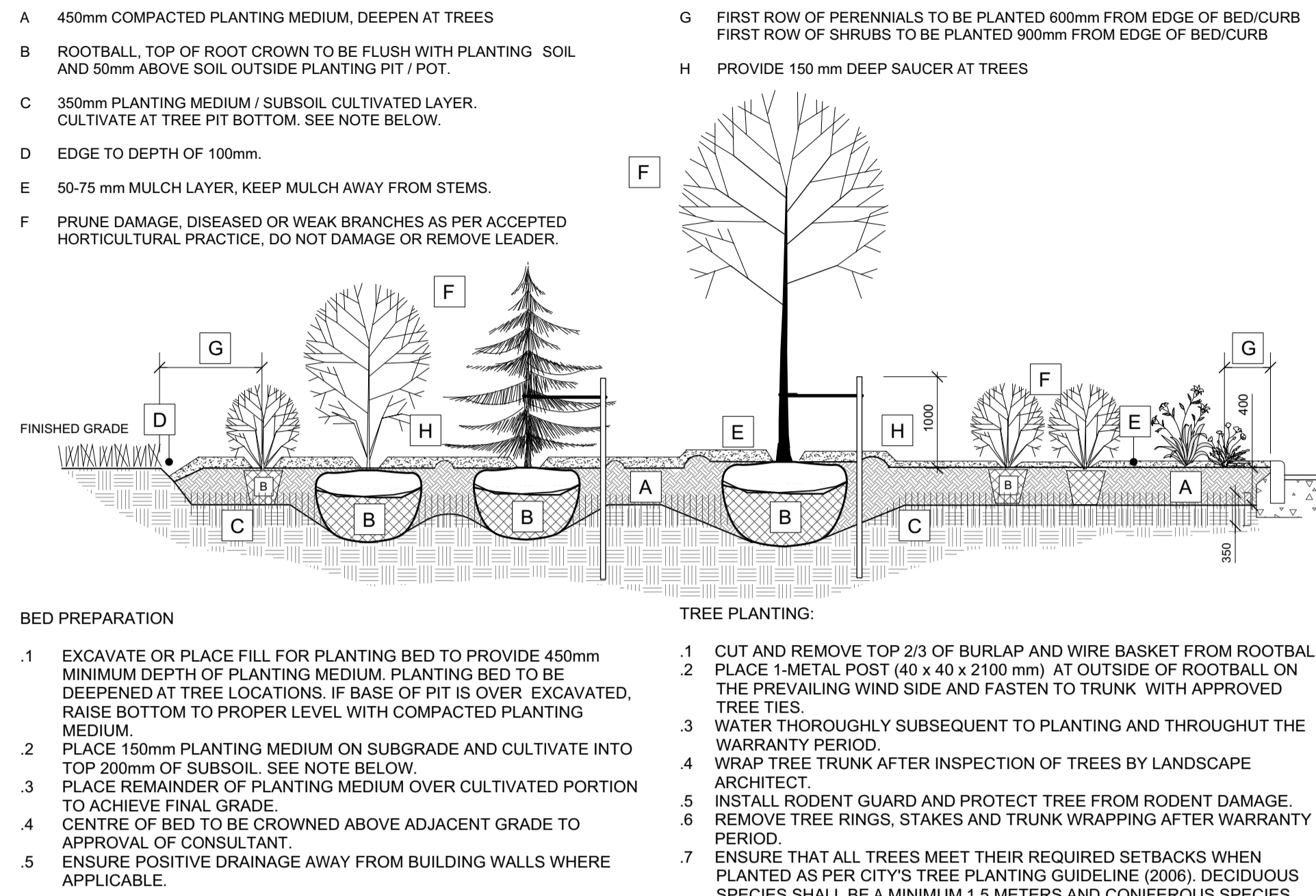
RA 19-1596

CONTRACTOR TO VERIFY ALL DIMENSIONS AND NOTIFY THE ARCHITECT OF ANY DISCREPANCIES BEFORE WORK COMMENCES.

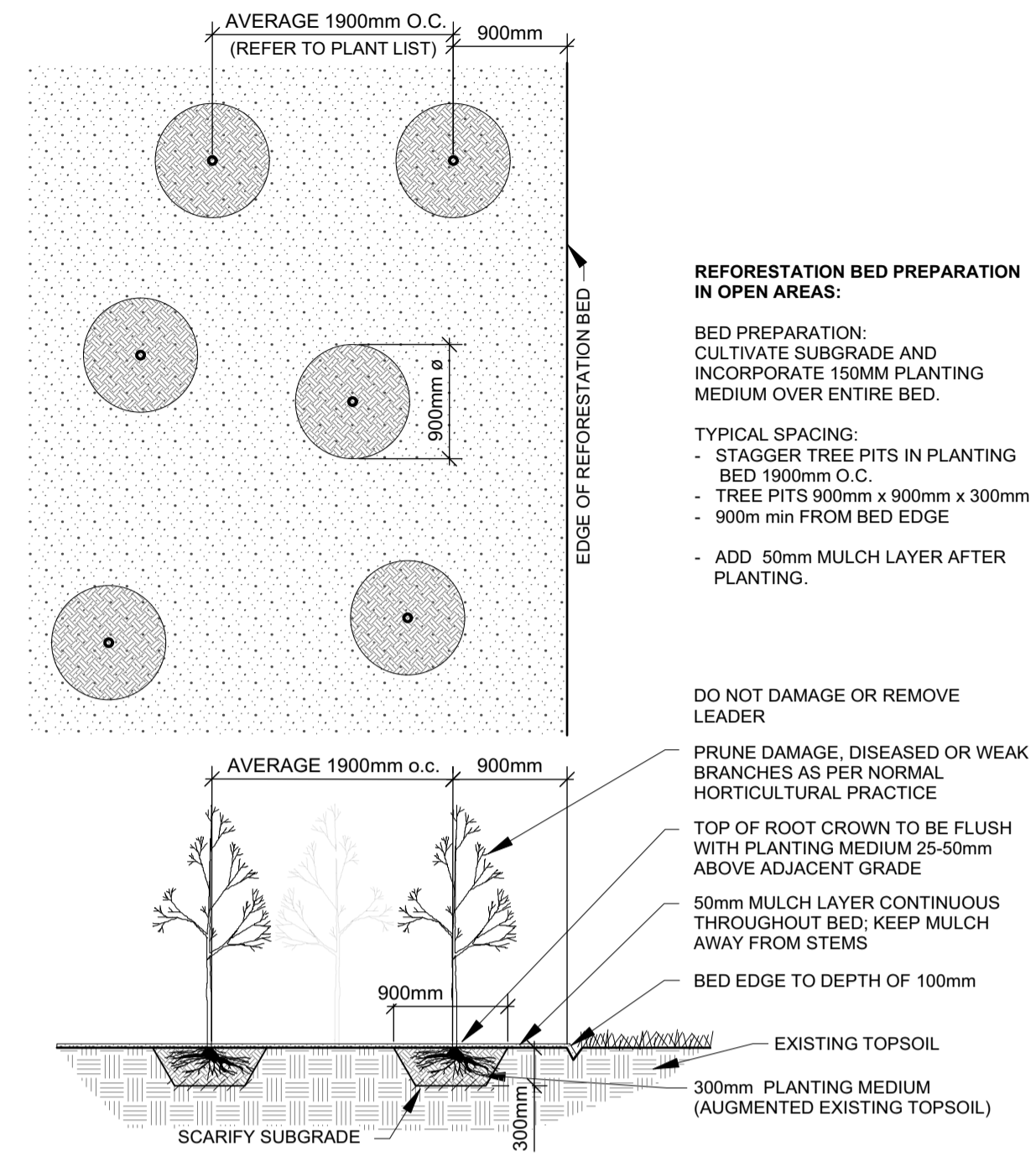
DO NOT SCALE DRAWINGS

ID	Qty	Botanical Name	Common Name	Scheduled Size	Remarks
STANDARD PLANTING					
Trees					
Ab	5	Abies balsamea	Balsam Fir	200 cm ht	WB, Staked
AnG	4	Acer nigrum 'Green Column'	Green Column Black Maple	60mm caliper	WB, Staked
ArAS	3	Acer rubrum 'Autumn Spire'	Red Maple	70mm caliper	WB, Staked
As	8	Acer saccharum	Sugar Maple	70mm caliper	WB, Staked
CoC	11	Celtis occidentalis 'Chicagoland'	Chicagoland Hackberry	70mm caliper	WB, Staked
GbAG	10	Ginkgo biloba 'Autumn Gold'	Autumn Gold Maidenhair Tree	70mm caliper	WB, Staked
Gtl	9	Gleditsia triacanthos 'Impole'	Imperial Locust	70mm caliper	WB, Staked
GtSK	15	Gleditsia triacanthos inermis 'Draves'	Streetkeeper Honeylocust	70mm caliper	WB, Staked
MHG	3	Malus 'Harvest Gold'	Harvest Gold Crabapple	50mm caliper	WB, Staked
Pg	8	Picea glauca	White Spruce	200 cm ht	WB, Staked
Ps	8	Pinus strobus	Eastern White Pine	200 cm ht	WB, Staked
Qm	6	Quercus macrocarpa	Burr Oak	70mm caliper	WB, Staked
Qr	7	Quercus rubra	Northern Red Oak	70mm caliper	WB, Staked
UF	2	Ulmus 'Fronteir'	Fronteir Elm	70mm caliper	WB, Staked
Shrubs					
Cr	14	Cornus racemosa	Gray Dogwood	50 cm ht.	Potted
Sa	15	Symphoricarpos albus	Snowberry	50 cm ht.	Potted
Sp	8	Syringa x prestoniae	Preston Lilac	100 cm ht.	Potted
Perennials					
CaKF	96	Calamagrostis x acutiflora 'Karl Foerster'	Feather Reed Grass		1 gallon pot
Hs	82	Helictrochon sempervirens	Ornamental Oats		1 gallon pot
REFORESTATION - TREES - Plant conifers in groupings of 3-5, deciduous to be mixed throughout beds					
As for	6	Acer saccharum	Sugar Maple	150 cm ht.	Bare root
Asa for	6	Acer rubrum	Red Maple	150 cm ht.	Bare root
Bp for	6	Betulus papyrifera	White Birch	150 cm ht.	Bare root
Ov for	6	Ostrya virginiana	American Hophornbeam	150 cm ht.	Bare root
Pg for	6	Picea glauca	White Spruce	75 cm ht.	Potted
Ps for	6	Pinus strobus	White Pine	50 cm ht.	Potted
Qm for	6	Quercus macrocarpa	Bur Oak	150 cm ht.	Bare root
Tc for	6	Tsuga canadensis	Canadian Hemlock	75 cm ht.	Potted
	0				

Plant List



Planting Details
NTS



Reforestation Planting Details
NTS



GENERAL NOTES

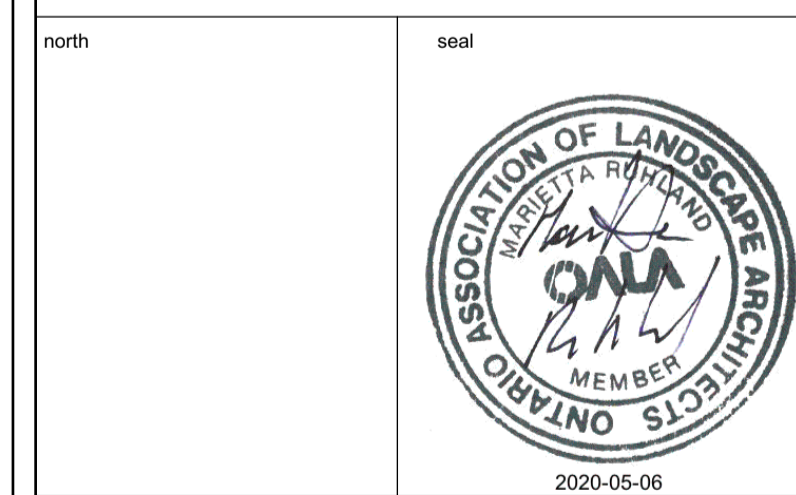
- All general site information and conditions compiled from existing plans, surveys and consultant's field notes. Report all discrepancies prior to any work. No responsibility is born by the Consultant for unknown subsurface conditions.
- The location of the utilities is approximate only, and the exact location should be determined by consulting the municipal authorities and utility companies concerned. The Contractor shall prove the location of utilities and shall be responsible for adequate protection from damage.
- All dimensions shown are to be verified on site prior to any construction. No deviations are to be made from the layouts as shown on this plan without prior consultation with the Landscape Architect and Owner.
- Obtain approval of Landscape Architect for granular base and layout of all pavement areas prior to construction.
- Stake planting locations and receive approval of Landscape Architect, prior to excavation of any planting pits. No substitutions of plant material shall be made without prior approval of the Landscape Architect.
- Where clay is encountered proper drainage must be ensured in tree/shrub pits, prior to planting. Have method approved by Landscape Architect.
- All sodded areas to receive a minimum of 150mm of topsoil over graded sub-base. If sod with mesh is used, mesh to be removed completely during sodding operations. Sod shall come from an approved source and shall be laid within 24 hours of being cut in the nursery. Only nursery sod shall be used.
- Final subgrade is to be approved by the Landscape Architect prior to sod being laid.
- Maintain positive surface runoff through the entire construction period.
- Reinstate all areas and items damaged as a result of construction activities.

no.	revision	date
04	Issued for Site Plan Control	2020/05/06
03	Revised per SPC Comments	2020/02/18
02	Issued for Building Permit	2019/12/19
01	Issued for Site Plan Control	2019/11/25

N45 ARCHITECTURE INC.
71 Bank Street, 7th Floor - Ottawa, Ontario, K1P 5N2
tel. 613.224.0095 fax 613.224.9811

Ruhland & Associates Ltd
landscape architecture • urban design • site planning
Ph 613-224-4744 Fx 613-224-1335 info@ralta.ca www.ralta.ca

FERNBANK ELEMENTARY SCHOOL
OTTAWA-CARLETON DISTRICT
SCHOOL BOARD
COPE DRIVE, OTTAWA, ONTARIO, K2S 1B6



drawing title	
PLANT LIST / DETAILS	
scale	drawn by
AS NOTED	AA / TF
date	checked by
01 NOV, 2019	MR
project number	drawing number
N45 19-467	L-02
RA 19-1596	revision
CONTRACTOR TO VERIFY ALL DIMENSIONS AND NOTIFY THE ARCHITECT OF ANY DISCREPANCIES BEFORE WORK COMMENCES.	
DO NOT SCALE DRAWINGS	