

**GENERAL NOTES**

- DESIGN AND CONSTRUCTION IS TO BE IN ACCORDANCE WITH MOST RECENT ONTARIO BUILDING CODE.
- THE CONTRACTOR IS RESPONSIBLE FOR CHECKING AND VERIFYING ALL DIMENSIONS WITH RESPECT TO SITE CONDITIONS AND ALL MATERIALS TO THE PROJECT. ANY DISCREPANCY SHALL BE REPORTED TO THE ENGINEER.
- THIS DRAWING IS TO BE READ IN CONJUNCTION WITH ALL MATERIAL RELEVANT TO THE PROJECT.
- ADDITIONAL DRAWINGS MAY BE ISSUED FOR CLARIFICATION TO ASSIST PROPER EXECUTION OF WORK. SUCH DRAWINGS WILL HAVE THE SAME MEANING AND INTENT AS IF THEY WERE INCLUDED WITH THE CONTRACT DOCUMENTS.
- ALL UNITS ARE IN METERS UNLESS NOTED OTHERWISE.
- CONTRACTOR MUST COMPLY WITH LOCAL BY-LAWS, CANADIAN CONSTRUCTION SAFETY CODE AND ALL REGULATIONS SET BY AUTHORITIES HAVING JURISDICTION. IN CASE OF CONFLICT OR DISCREPANCY, THE MORE STRINGENT REQUIREMENTS SHALL APPLY.
- CONTRACTOR RESPONSIBLE FOR OBTAINING ALL REQUIRED UTILITY LOCATES, INSPECTIONS, PERMITS, AND APPROVALS, INCLUDING ALL ASSOCIATED COSTS. LOCATION OF EXISTING UTILITIES ARE APPROXIMATE ONLY AND BASED ON BEST AVAILABLE INFORMATION.

**DRAWING NOTES**

- MATCH EXISTING GRADES AT PROPERTY LINES AND LIMITS OF WORK.
- CONNECT NEW SIDEWALK TO MATCH EXISTING SIDEWALK ELEVATION
- INSTALL SILT FENCE IN ACCORDANCE TO OPSD 219.130
- NEW EMERGENCY OVERFLOW SCUPPER
- NEW ROOF DRAIN.
- ANY DISTURBED AREA WITHIN THE RIGHT-OF-WAY SHALL BE REINSTATED TO EQUAL OR BETTER CONDITION TO THE SATISFACTION OF THE CITY OF OTTAWA AND IN ACCORDANCE WITH THE CITY STANDARDS FOR ROAD CUTS
- PROVIDE CURB CUT PER DETAIL 4/C06
- LIGHT DUTY ASPHALT PER DETAIL 1/C6
- HEAVY DUTY ASPHALT PER DETAIL 2/C6
- PROVIDE DEPRESSED SIDEWALK ACCESS
- STONEDUST PATHWAY - SEE LANDSCAPE

**DRAWING NOTES (Continued)**

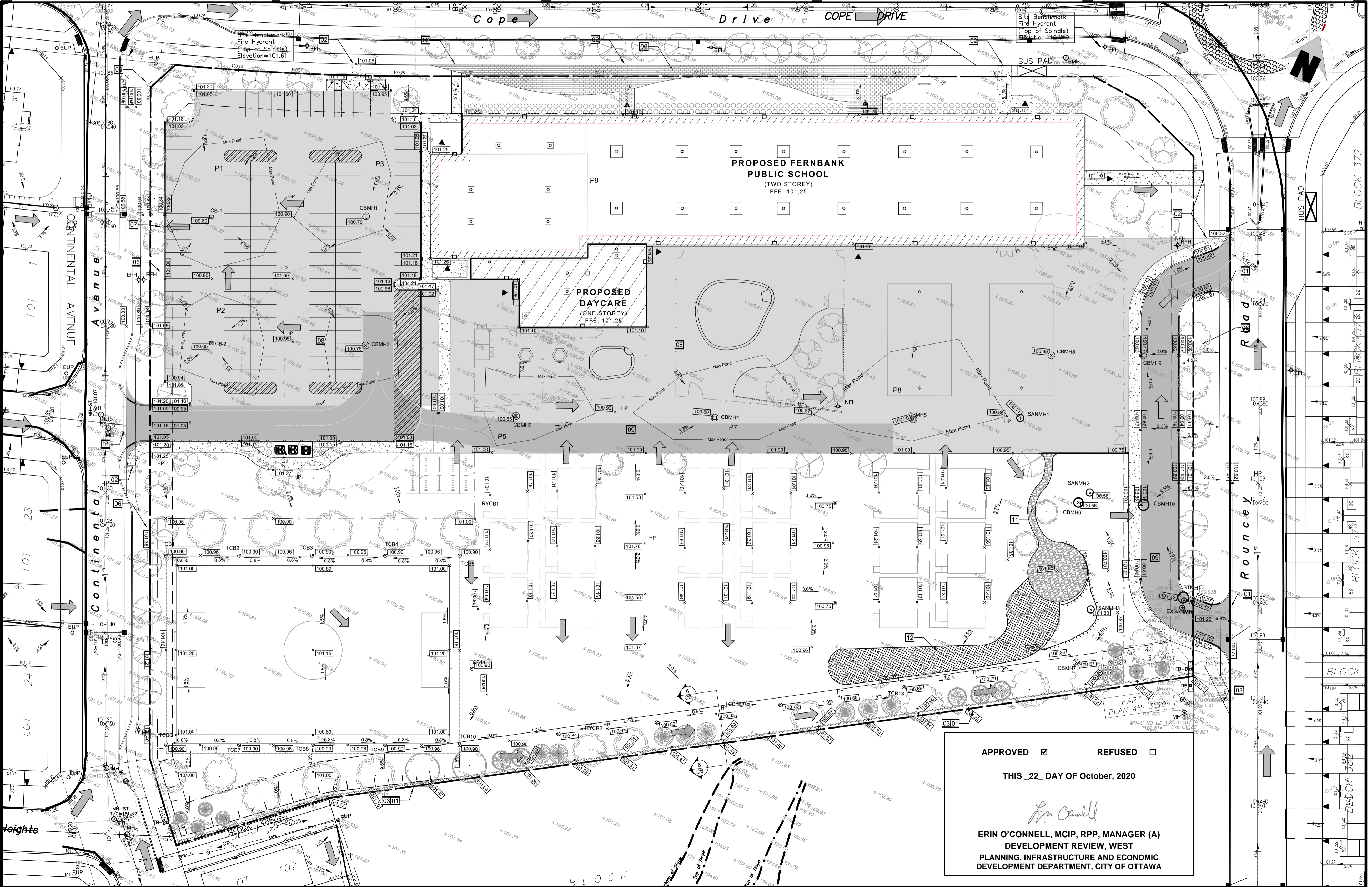
- REFER TO LANDSCAPE DRAWINGS

**EROSION AND SEDIMENT CONTROL NOTES**

- THE CONTRACTOR SHALL IMPLEMENT BEST MANAGEMENT PRACTICES TO PROVIDE FOR PROTECTION OF THE AREA DRAINAGE SYSTEM AND THE RECEIVING WATER COURSE, DURING CONSTRUCTION ACTIVITIES; THIS INCLUDES LIMITING THE AMOUNT OF EXPOSED SOIL, INSTALLING SILT FENCES AND OTHER EFFECTIVE SEDIMENT TRAPS, AND INSTALLING AND MAINTAINING MUD MATS FOR OUTGOING CONSTRUCTION TRAFFIC DURING CONSTRUCTION ACTIVITIES.
- PREVENT SOIL LOSS DURING CONSTRUCTION (BY STORM WATER RUNOFF OR WIND EROSION).
- PROTECT TOPSOIL BY STOCKPILING FOR REUSE.
- PREVENT SEDIMENTATION OF STORM SEWERS AND RECEIVING STREAMS.
- PREVENT AIR POLLUTION FROM DUST AND PARTICULATE MATTER.
- ALL STORM MANHOLES AND CATCHBASIN MANHOLES TO HAVE 300mm SUMPS; ALL CATCHBASINS TO HAVE 600mm SUMPS.
- INSTALL FILTER BAG INSERT IN ALL STORM MANHOLES AND CATCH BASINS IMPACTED DURING CONSTRUCTION, INCLUDING CATCH BASINS IN THE RIGHT OF WAY.
- STORM WATER PUMPED INTO CITY SERVICE SHALL FLOW THROUGH A FILTER SOCK.

**EROSION AND SEDIMENT NOTES (Continued)**

- THE CONTRACTOR ACKNOWLEDGES THAT FAILURE TO IMPLEMENT APPROPRIATE EROSION AND SEDIMENTATION CONTROL MEASURES MAY BE SUBJECT TO PENALTIES IMPOSED BY ANY APPLICABLE REGULATORY AGENCY.



No.	DESCRIPTION	DATE
4	REVISED PER CITY COMMENTS	2020-05-01
3	REVISED PER CITY COMMENTS	2020-02-18
2	ISSUED FOR BUILDING PERMIT	2019-12-19
1	ISSUED FOR SITE PLAN CONTROL	2019-11-28
No.	DESCRIPTION	YYYY-MM-DD

**N45 ARCHITECTURE INC.**  
 43 Eccles Street, 2nd Floor - Ottawa, Ontario, K1R 6S3  
 tel. 613.224.0095 fax 613.224.9811

project  
**FERNBANK ELEMENTARY SCHOOL**

480 COPE DRIVE, OTTAWA, ONTARIO

APPROVED  REFUSED

THIS 22 DAY OF October, 2020

*Erin O'Connell*  
 ERIN O'CONNELL, MCIP, RPP, MANAGER (A)  
 DEVELOPMENT REVIEW, WEST  
 PLANNING, INFRASTRUCTURE AND ECONOMIC  
 DEVELOPMENT DEPARTMENT, CITY OF OTTAWA

scale	drawn by
1:400	M.S.
date	checked by
DEC 2019	B.K.
project number	drawing number
	<b>C05</b>
CONTRACTOR TO VERIFY ALL DIMENSIONS AND NOTIFY THE ARCHITECT OF ANY DISCREPANCIES BEFORE WORK COMMENCES. DO NOT SCALE DRAWINGS.	revision