

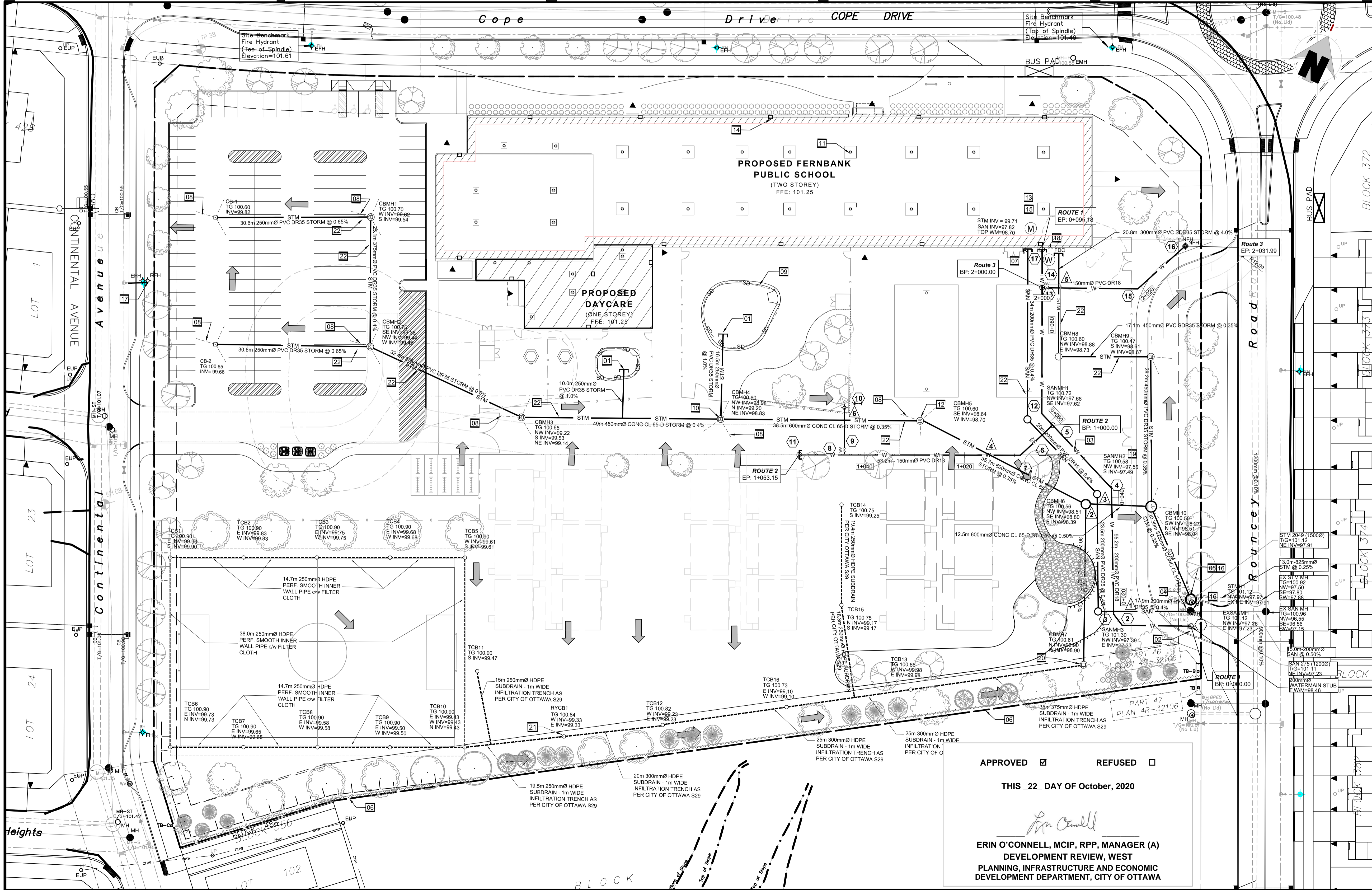
- GENERAL NOTES**
- DESIGN AND CONSTRUCTION IS TO BE IN ACCORDANCE WITH MOST RECENT ONTARIO BUILDING CODE.
 - THE CONTRACTOR IS RESPONSIBLE FOR CHECKING AND VERIFYING ALL DIMENSIONS WITH RESPECT TO SITE CONDITIONS AND ALL MATERIALS TO THE PROJECT. ANY DISCREPANCY SHALL BE REPORTED TO THE ENGINEER.
 - THIS DRAWING IS TO BE READ IN CONJUNCTION WITH ALL MATERIAL RELEVANT TO THE PROJECT.
 - ADDITIONAL DRAWINGS MAY BE ISSUED FOR CLARIFICATION TO ASSIST PROPER EXECUTION OF WORK. SUCH DRAWINGS WILL HAVE THE SAME MEANING AND INTENT AS IF THEY WERE INCLUDED WITH THE CONTRACT DOCUMENTS.
 - ALL UNITS ARE IN METERS UNLESS NOTED OTHERWISE.
 - CONTRACTOR MUST COMPLY WITH LOCAL BY-LAWS, CANADIAN CONSTRUCTION SAFETY CODE AND ALL REGULATIONS SET BY AUTHORITIES HAVING JURISDICTION. IN CASE OF CONFLICT OR DISCREPANCY, THE MORE STRINGENT REQUIREMENTS SHALL APPLY.
 - CONTRACTOR RESPONSIBLE FOR OBTAINING ALL REQUIRED UTILITY LOCATES, INSPECTIONS, PERMITS, AND APPROVALS, INCLUDING ALL ASSOCIATED COSTS. LOCATION OF EXISTING UTILITIES ARE APPROXIMATE ONLY AND BASED ON BEST AVAILABLE INFORMATION.

- DRAWING NOTES**
- CONNECT NEW PLAY AREA SUB-DRAIN TO NEW 250mmØ STORM SEWER STUB. PROVIDE WATERTIGHT CONNECTION WITH SOLENO PRE-MANUFACTURED END CAP OR APPROVED EQUIVALENT FITTED FOR A 250mm PVC PIPE.
 - CONNECT NEW 200mmØ WATERMAIN TO EXISTING 200mmØ STUB. CONTRACTOR TO COORDINATE WITH CITY OF OTTAWA FORCES.
 - SUPPLY AND INSTALL NEW 200mmØ PVC DR18 WATERMAIN WITH MINIMUM 2.4m COVER. OTHERWISE PROVIDE THERMAL INSULATION IN ACCORDANCE WITH CITY OF OTTAWA STANDARD DETAIL DRAWING W22.
 - BREAK INTO EXISTING SANITARY MANHOLE AND CONNECT NEW 200mm Ø PVC SANITARY SEWER TO EXISTING MANHOLE. ADJUST BENCHING TO SUIT NEW SANITARY SEWER CONNECTION. PROVIDE WATERTIGHT CONNECTION.
 - REMOVE EXISTING 1500mmØ MANHOLE AND REPLACE WITH NEW 1800mm Ø MANHOLE STMH-2. PROVIDE WATERTIGHT CONNECTIONS TO EXISTING AND NEW STORM SEWERS.
 - INSTALL SILT FENCE IN ACCORDANCE WITH OPSD 219.130.

- DRAWING NOTES (Continued)**
- CONNECT SERVICES TO INTERIOR PLUMBING 1m FROM BUILDING FOUNDATION. SEE MECHANICAL AND ARCHITECTURAL PLANS.
 - INSTALL 3.0m LONG 100mmØ PERFORATED DRAIN PIPE c/w FILTER SOCK, EXTENDING FROM CBMH / STMH AT PAVEMENT SUBGRADE LEVEL.
 - INSTALL NEW 100mmØ PERFORATED DRAIN PIPE c/w FILTER SOCK SURROUNDED IN 25mm CLEAR STONE, 150mm IN DEPTH. REFER TO LANDSCAPE PLAN FOR EXACT LOCATION.
 - CONNECT PLAY AREA SUBDRAIN TO STORM MANHOLE.
 - WATTS RD-100 FLOW CONTROL ROOF DRAIN OR APPROVED EQUIVALENT TO BE INSTALLED MAXIMUM DISCHARGE 0.63l/s PER ROOF DRAIN. MAXIMUM DISCHARGE 18.3 l/s TOTAL. 100-YEAR ROOF PONDING DEPTH 0.12m.
 - INSTALL FLOW REGULATOR INSIDE CATCHBASIN MANHOLE CBMH5 OUTLET. MAXIMUM DISCHARGE 300 l/s. MAXIMUM HEAD 2.21 m. ORIFICE PLATE REFER TO DRAWING C06.
 - INSTALL PRESSURE REDUCING VALVE. REFER TO MECHANICAL PLANS.

- DRAWING NOTES (Continued)**
- NEW EMERGENCY OVERFLOW SCUPPER.
 - INSTALL BACKFLOW PREVENTER VALVE. REFER TO MECHANICAL PLANS.
 - EXISTING MANHOLE INVERTS, STMH2 AND EXSANMH, TO BE CONFIRMED PRIOR TO CONSTRUCTION. INVERT ELEVATIONS FOR MANHOLES AND CATCHBASINS LOCATED ON "MANHOLE AND CATCHBASIN SCHEDULE" ON DRAWING C03.
 - EXISTING FIRE HYDRANT TO BE RELOCATED BEHIND NEW LAYBY.
 - SIAMESE CONNECTION
 - PROVIDE WATERTIGHT SANITARY MANHOLE COVER TO SANMH2
 - INSTALL FLOW REGULATOR INSIDE CATCHBASIN MANHOLE CBMH7 OUTLET. MAXIMUM DISCHARGE 60 l/s. MAXIMUM HEAD 1.81 m. ORIFICE PLATE REFER TO DRAWING C06.
 - REAR YARD CATCHBASIN IN ACCORDANCE TO S30/S31 ON DRAWING C06.
 - INSULATE SEWER PIPE PER W22

- DRAWING NOTES (Continued)**



APPROVED REFUSED

THIS 22 DAY OF October, 2020

Erin O'Connell

ERIN O'CONNELL, MCIP, RPP, MANAGER (A)
DEVELOPMENT REVIEW, WEST
PLANNING, INFRASTRUCTURE AND ECONOMIC
DEVELOPMENT DEPARTMENT, CITY OF OTTAWA



No.	DESCRIPTION	YYYY-MM-DD
4	REVISED PER CITY COMMENTS	2020-05-01
3	REVISED PER CITY COMMENTS	2020-02-18
2	ISSUED FOR BUILDING PERMIT	2019-12-19
1	ISSUED FOR SITE PLAN CONTROL	2019-11-28

N45 ARCHITECTURE INC.
43 Eccles Street, 2nd Floor - Ottawa, Ontario, K1R 6S3
tel. 613.224.0095 fax 613.224.9811

project
FERNBANK ELEMENTARY SCHOOL

480 COPE DRIVE, OTTAWA, ONTARIO

Professional Engineer Seal: EYE KOMMERLE 10045089 2020-05-01 PROVINCE OF ONTARIO

drawing title
SITE SERVICING PLAN

scale 1:400	drawn by M.S.
date DEC 2019	checked by B.K.
project number	drawing number C04
CONTRACTOR TO VERIFY ALL DIMENSIONS AND NOTIFY THE ARCHITECT OF ANY DISCREPANCIES BEFORE WORK COMMENCES. DO NOT SCALE DRAWINGS.	revision