

**WORK AT THE CRITICAL ROOT ZONE (CRZ) OF EXISTING TREES TO BE RETAINED**  
 ISA CERTIFIED ARBORIST REQUIRED ON SITE DURING REMOVALS, ROOT EXPLORATION AND PRUNING, AND CONSTRUCTION AT THE PERIMETER OF OR WITHIN THE CRZ OF ANY TREES. HAND DIG OR AIR SPADE AT THE LIMIT OF TREE PROTECTION FENCING AND PRUNE ANY ROOTS LESS THAN 50mm DIA. PRIOR TO EXCAVATION.

**LEGEND**

DETAIL SECTION

DETAIL NUMBER

SHEET ON WHICH DETAIL IS SHOWN

**MATERIAL LEGEND**

EXISTING DECIDUOUS TREE TO BE RETAINED WITH CRITICAL ROOT ZONE (CRZ)

TREE PROTECTION FENCING

IPE DECK

ASPHALT PAVING

TURF GRASS

PLANTING BEDS: SHRUBS + PERENNIALS

PRECAST CONCRETE UNITS PAVING TYPE 1: Mountain Mist/ 360x180x80mm

PRECAST CONCRETE UNITS PAVING TYPE 2: Black Granite/ 200x100x70mm

SAW CUT C.I.P. CONCRETE PAVING

**INTERRENT REIT**  
 owner | propriétaire

**CLELAND JARDINE**  
 ENGINEERING LTD  
 structural engineers | ingénieur structure

**Smith + Andersen**  
 530 - 1600 Carling Avenue Ottawa Ontario K1Z 1G3  
 1 613 230 1186 smithandandersen.com  
 MEP engineers | ingénieur MEP

**PARSONS**  
 1223 MICHAEL STREET, SUITE 100, OTTAWA, ONTARIO K1J 7T2  
 Tel: 613-738-4160 Fax: 613-738-7105

civil engineers | ingénieur civil

**Forest and Field**  
 Landscape Architecture  
 205 - 720 Bathurst Street Toronto Ontario M5S 2R4  
 1 647 933 1151 forestandfield.ca  
 landscape architects | architectes paysagistes

nord du projet / project north

nord actuel / true north

01 ISSUED FOR SITE PLAN CONTROL 2019-12-06

no revisions date

stamp | timbre

ASSOCIATION OF LANDSCAPE ARCHITECTS  
 MATTHEW SWIGBY  
 MEMBER  
 OTTAWA  
 SYDNEY

architect | architecte

**linebox**  
 STUDIO

general notes | note générale

- CONTRACTOR SHALL CHECK AND VERIFY ALL DIMENSIONS AND REPORT ALL ERRORS AND OMISSIONS TO THE ARCHITECT.
- DO NOT SCALE THE DRAWINGS.
- NOT FOR CONSTRUCTION.

project title

**473 ALBERT**  
 PROPOSED MIXED-USE RENOVATION

473 ALBERT STREET | OTTAWA | ONTARIO | CANADA

drawing title | titre du dessin

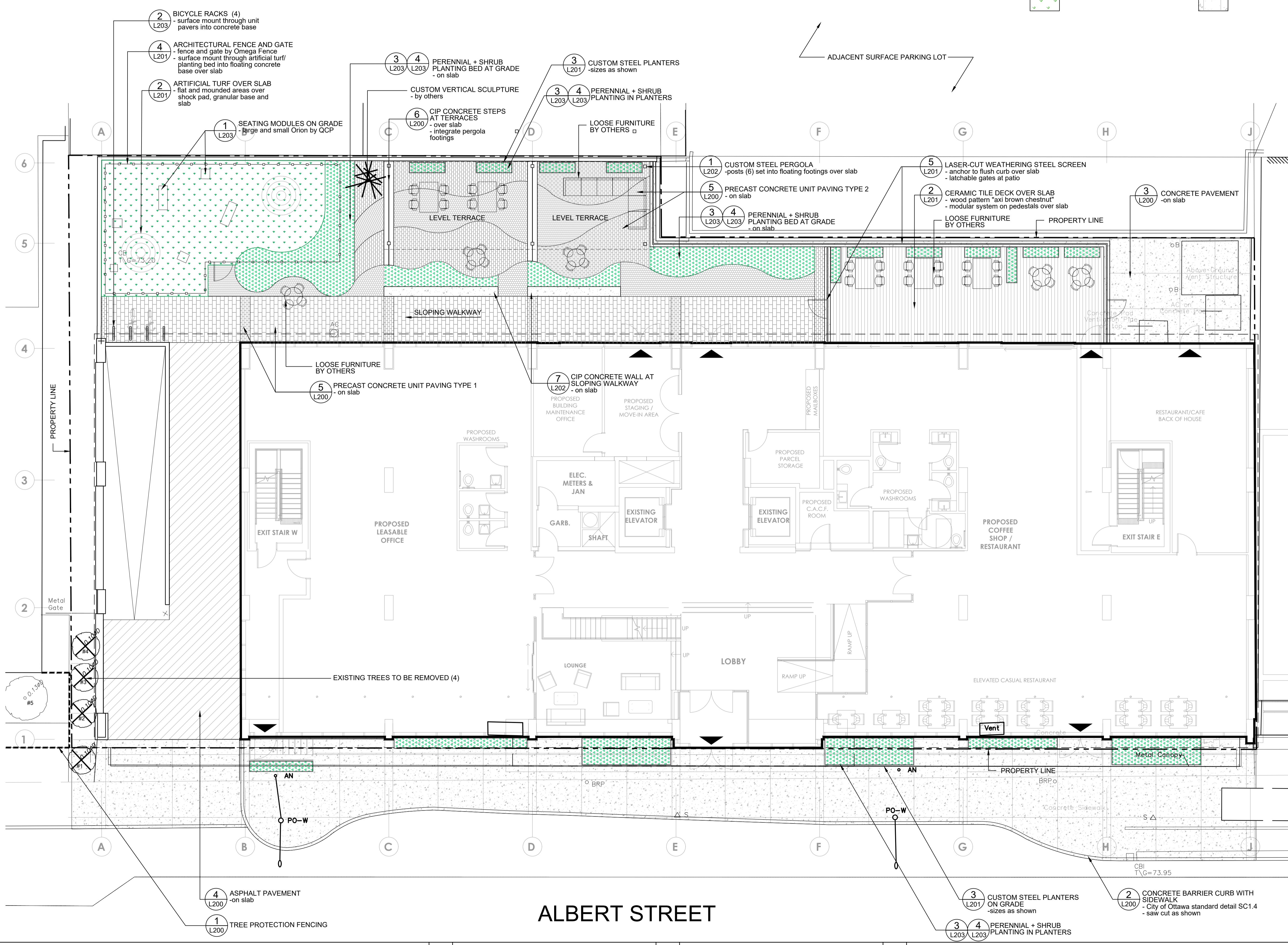
L01  
**MATERIALS PLAN**

0 5m

scale | échelle 1:100

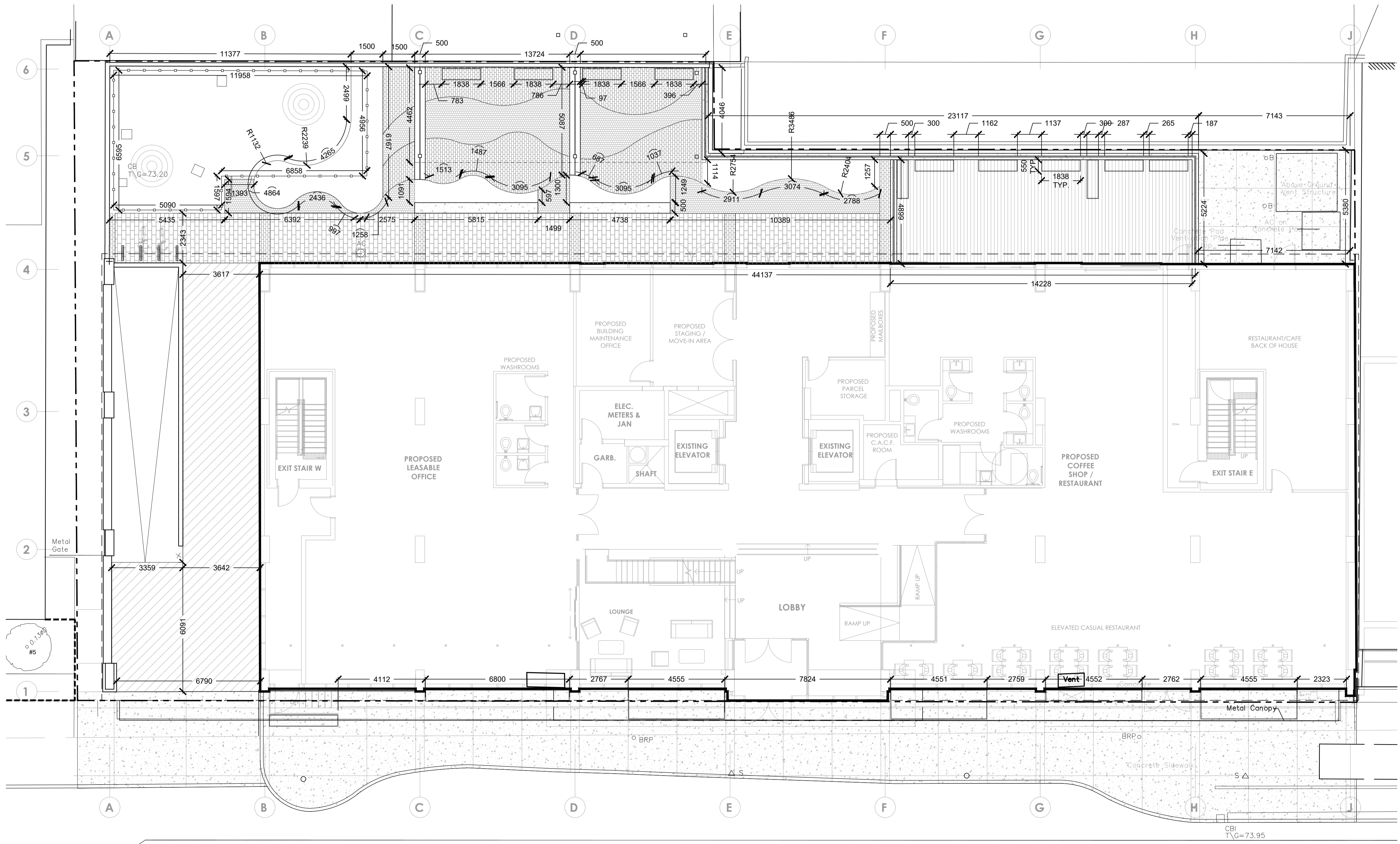
drawing number | numéro du dessin

**L01.100**

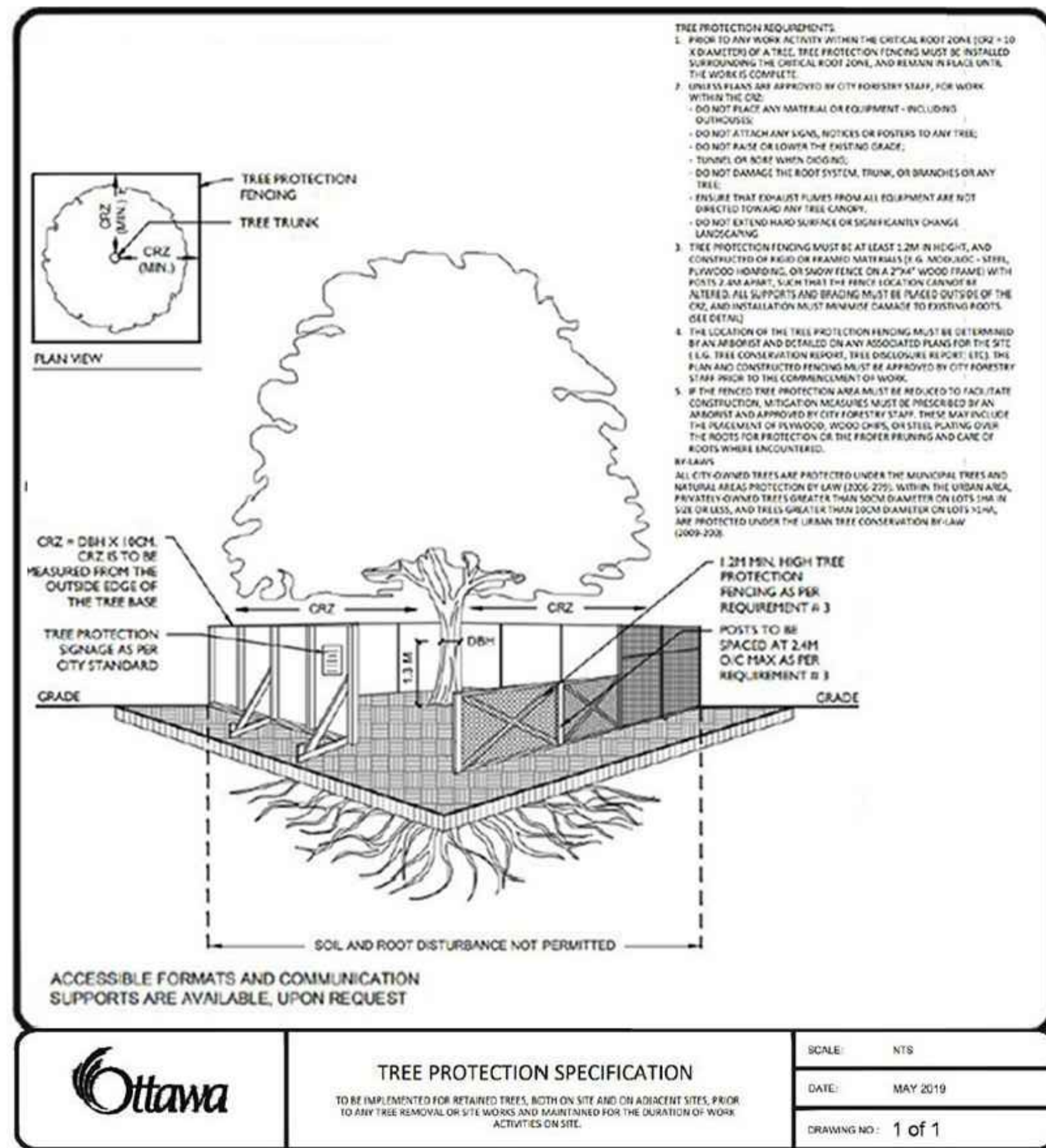




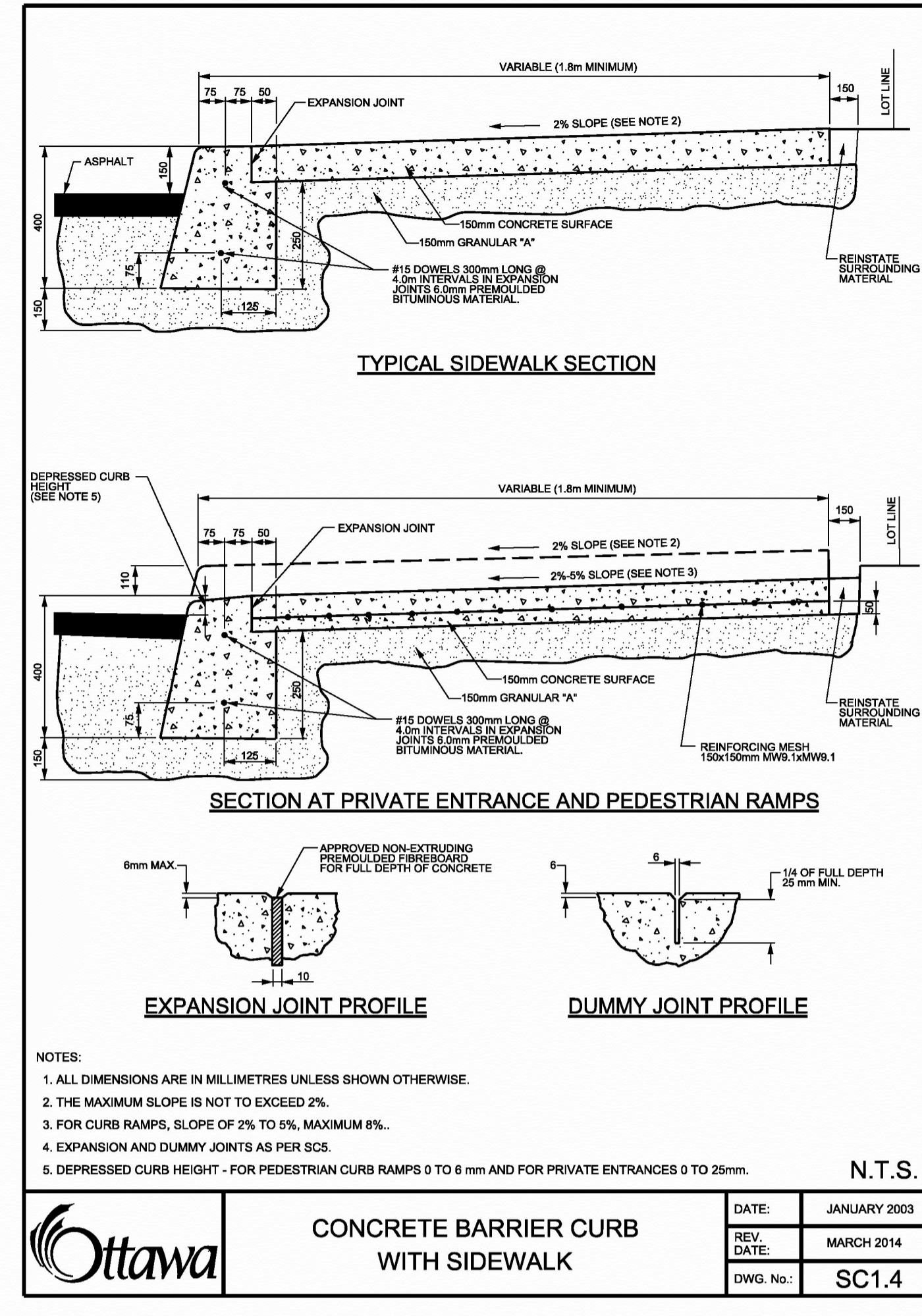
- CONTRACTOR SHALL CHECK AND VERIFY ALL DIMENSIONS AND REPORT ALL ERRORS AND OMISSIONS TO THE ARCHITECT.
- DO NOT SCALE THE DRAWINGS.
- NOT FOR CONSTRUCTION.



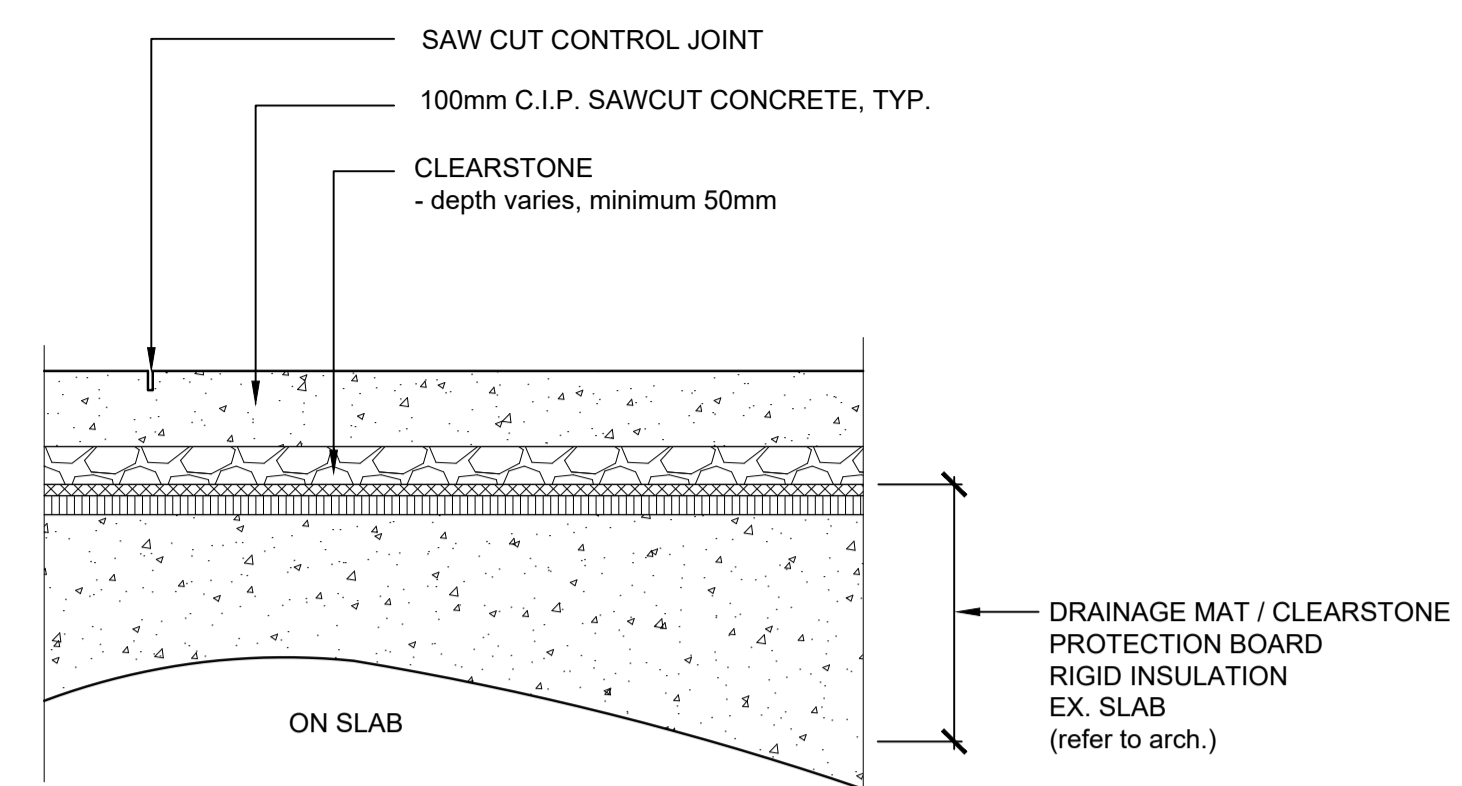
ALBERT STREET



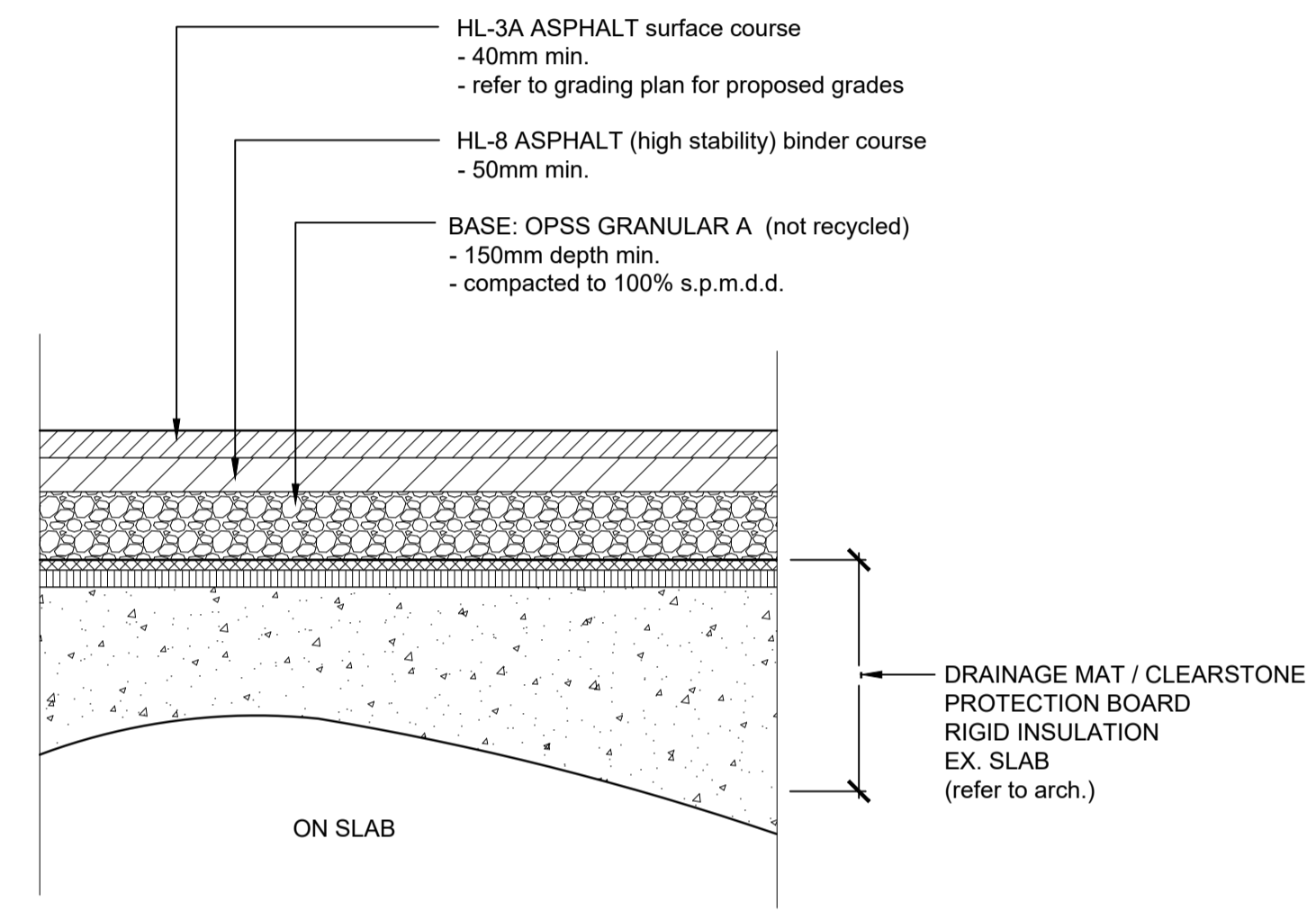
**1 TREE PROTECTION BARRIERS**  
N.T.S.



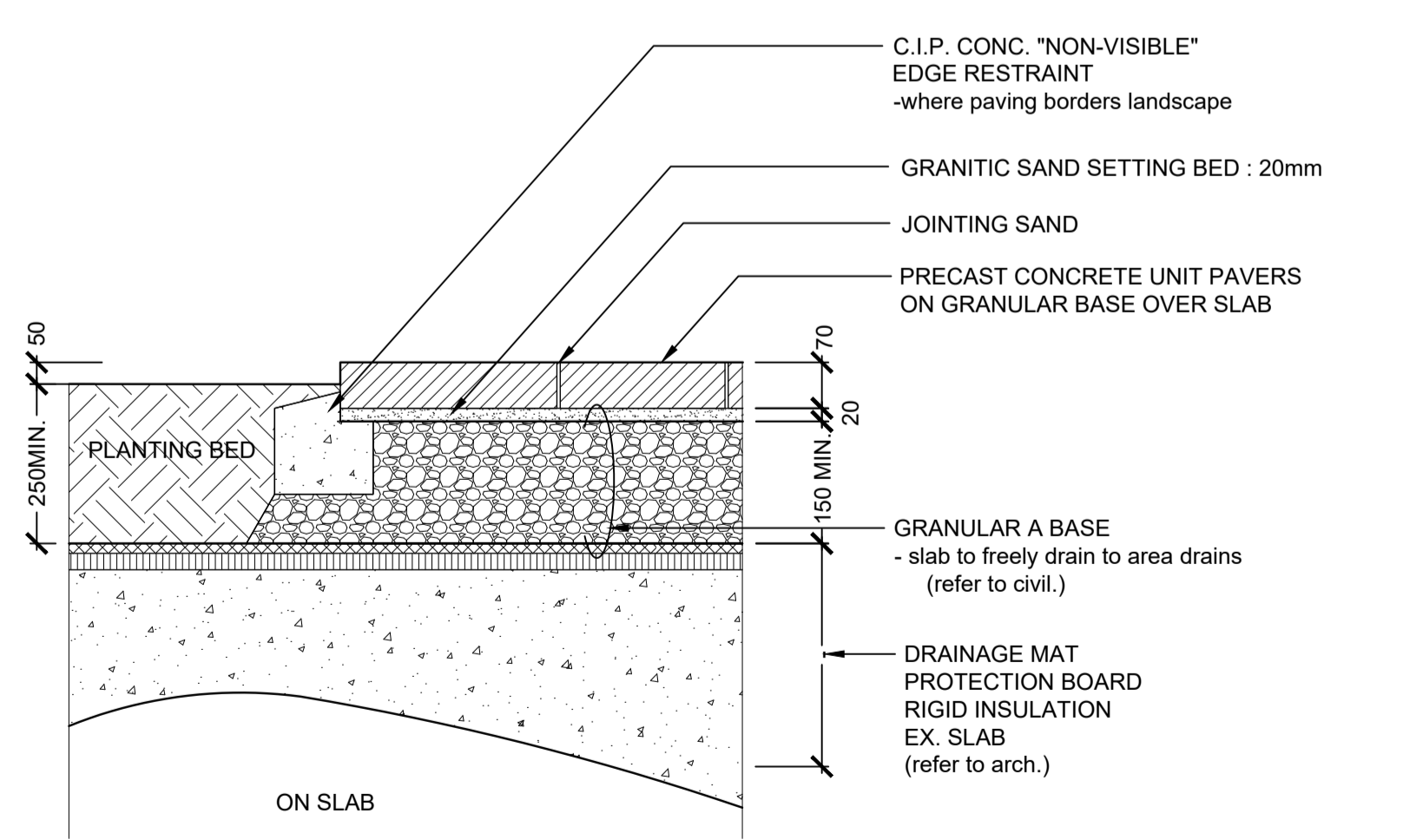
**2 CONCRETE BARRIER CURB WITH SIDEWALK**  
N.T.S.  
CITY OF OTTAWA DETAIL SC1.4



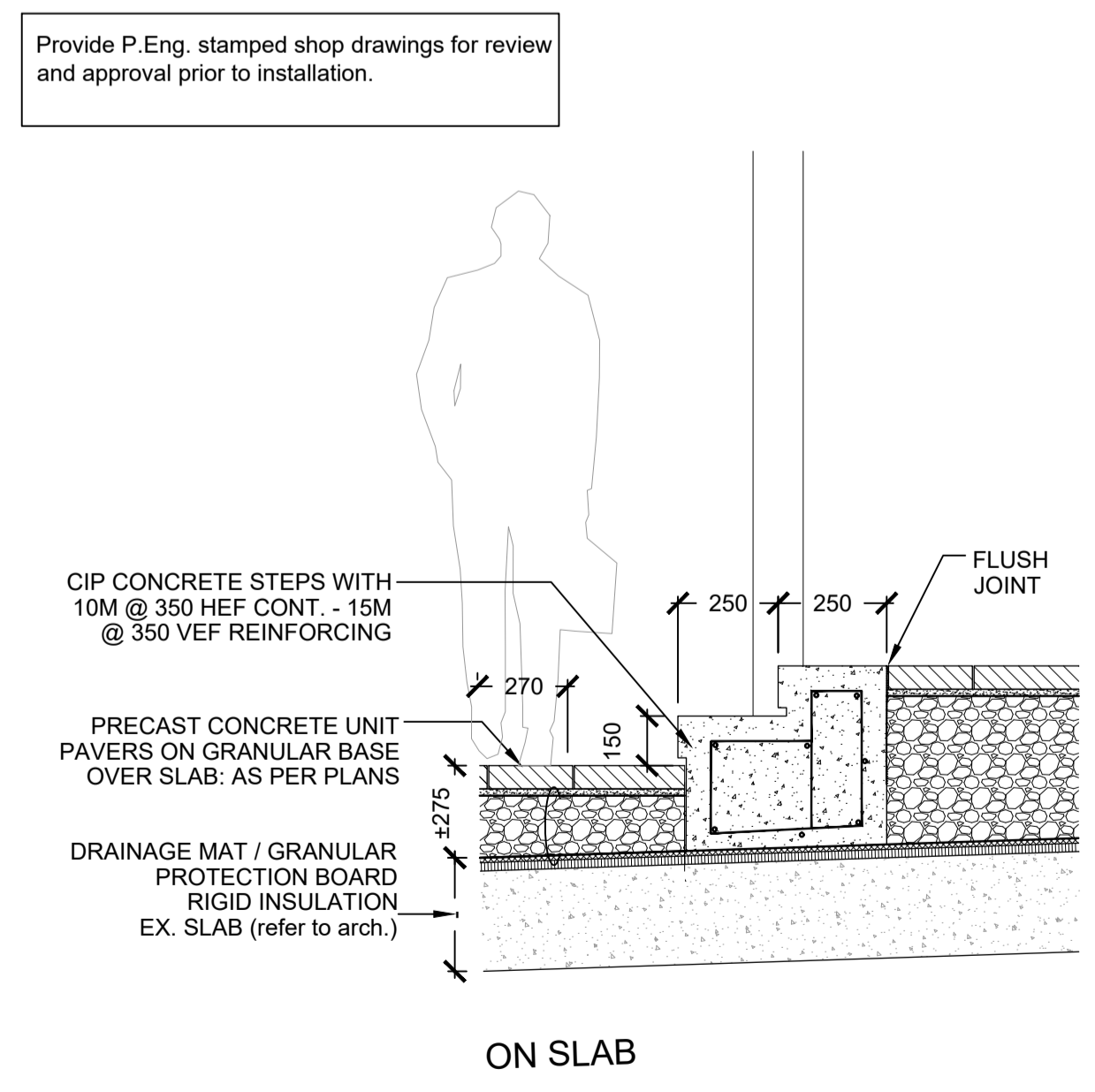
**3 CONCRETE PAVEMENT ON SLAB**  
1:10



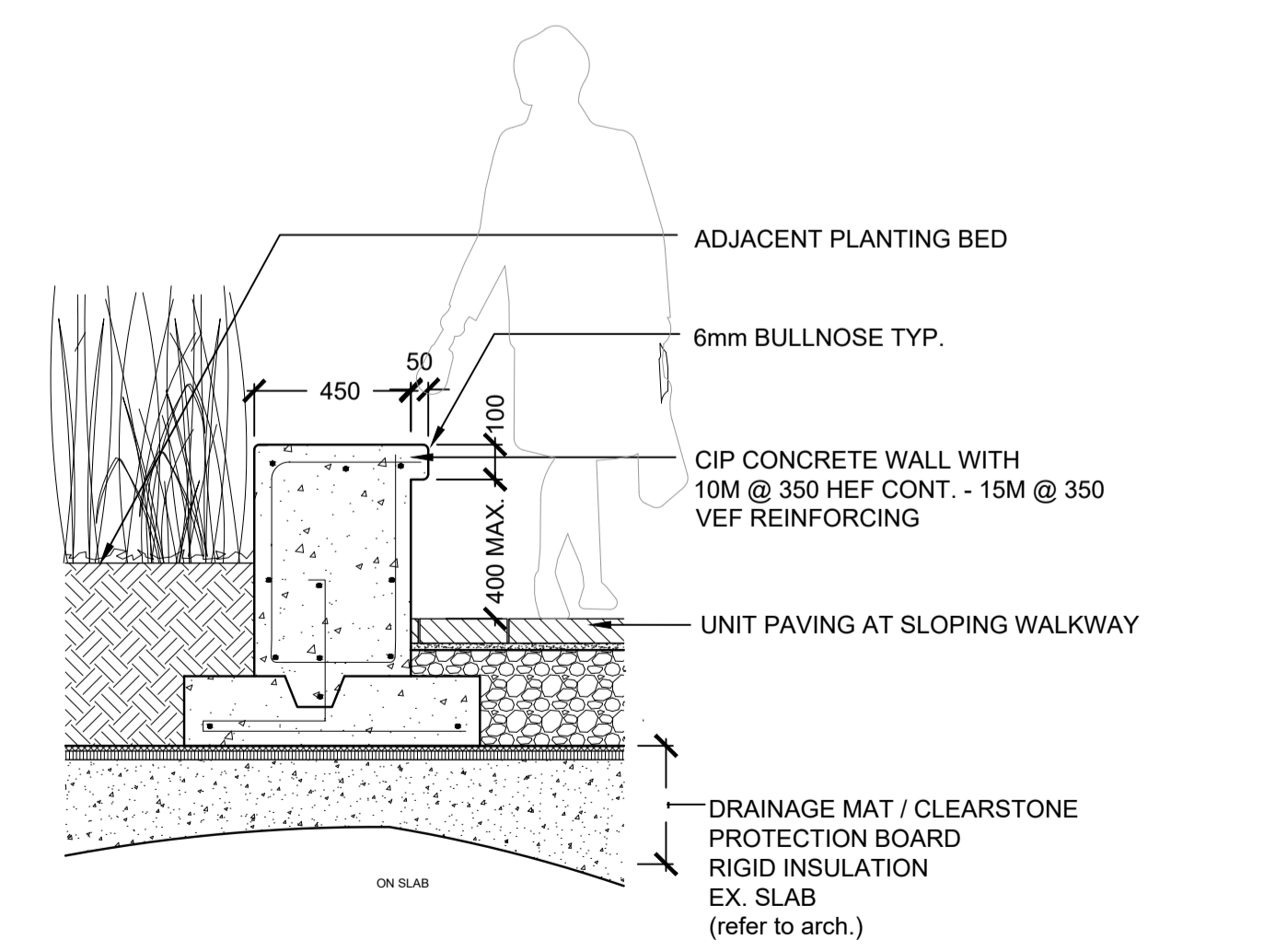
**4 TYP. MEDIUM-DUTY ASPHALT PAVING ON SLAB**  
1:10



**5 PRECAST CONCRETE UNIT PAVING ON SLAB AT PLANTING BED**  
1:10



**6 CIP CONCRETE STEPS AT TERRACES**  
1:20



**7 CIP CONCRETE WALL AT SLOPING WALKWAY**  
1:20

**INTERRENT REIT**  
owner | propriétaire

**CLELAND JARDINE ENGINEERING LTD.**  
structural engineers | ingénieur structure

**Smith + Andersen**  
530 - 1600 Carling Avenue Ottawa Ontario K1Z 1G3  
1 613 230 1186 smithandandersen.com  
MEP engineers | ingénieur MEP

**PARSONS**  
1223 MICHAEL STREET, SUITE 100, OTTAWA, ONTARIO K1J 7T2  
Tel: 613-738-4100 Fax: 613-738-7105  
civil engineers | ingénieur civil

**Forest and Field Landscape Architecture**  
205 - 720 Bathurst Street Toronto Ontario M5S 2R4  
1 647 933 1151 forestandfield.ca  
landscape architects | architectes paysagistes

nord du projet project north  
nord actuel true north

01 ISSUED FOR SITE PLAN CONTROL 2019-12-06  
no revisions date

stamp | timbre

architect | architecte  
**linebox STUDIO**

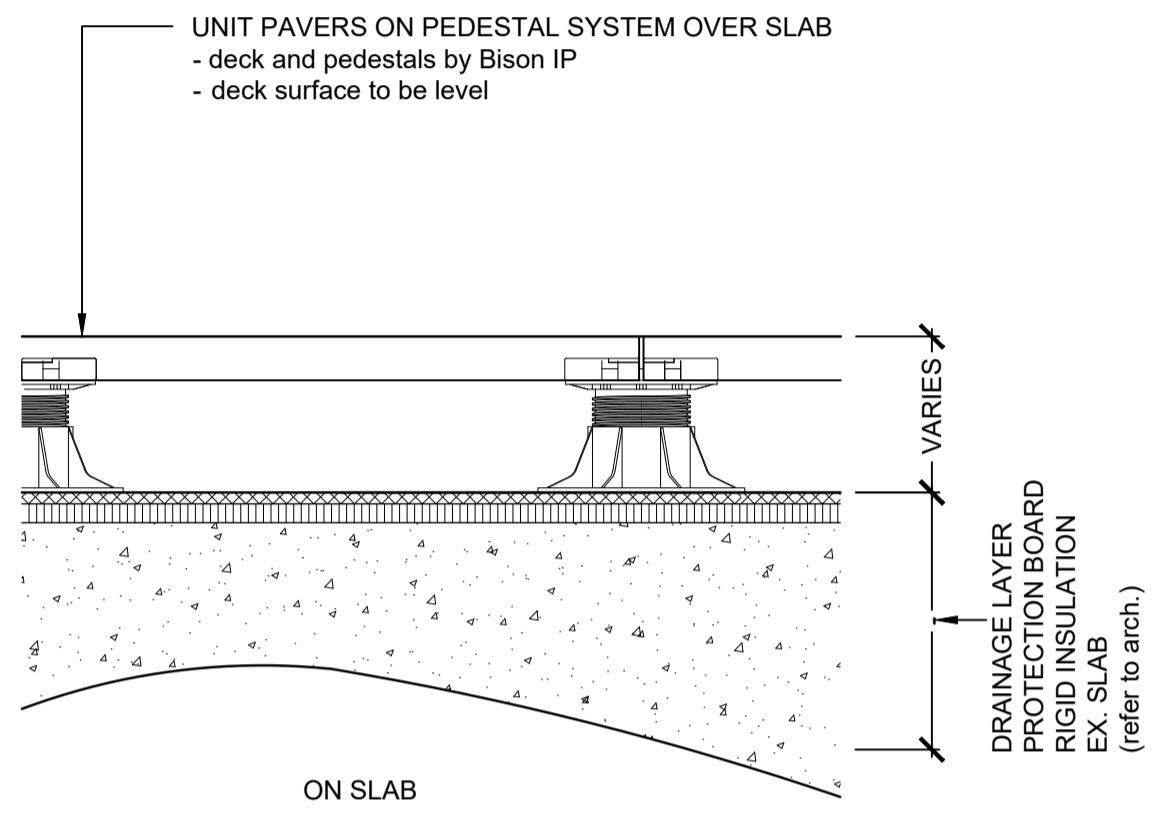
general notes | note générale  
1. CONTRACTOR SHALL CHECK AND VERIFY ALL DIMENSIONS AND REPORT ALL ERRORS AND OMISSIONS TO THE ARCHITECT.  
2. DO NOT SCALE THE DRAWINGS.  
3. NOT FOR CONSTRUCTION.

project title  
**473 ALBERT**  
PROPOSED MIXED-USE RENOVATION  
473 ALBERT STREET | OTTAWA | ONTARIO | CANADA  
drawing title | titre du dessin

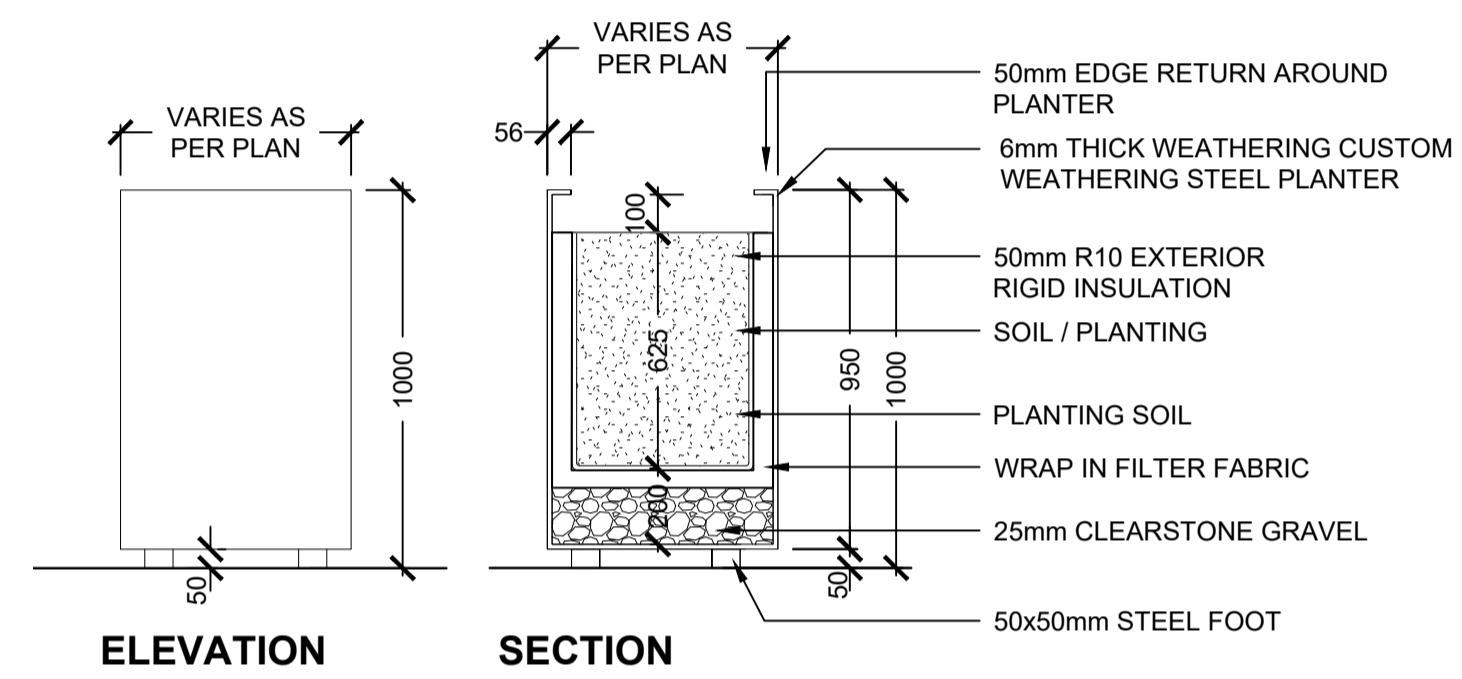
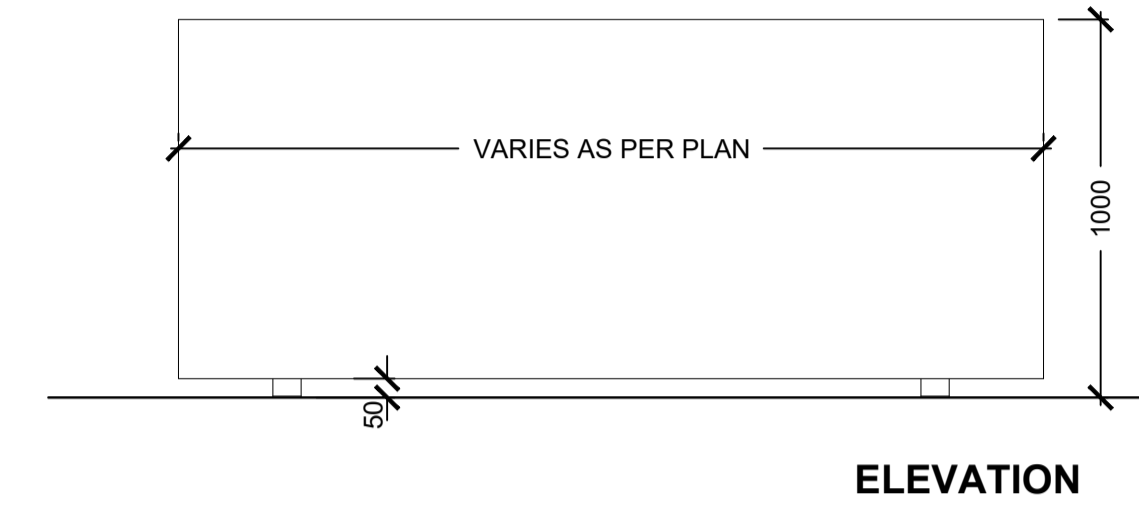
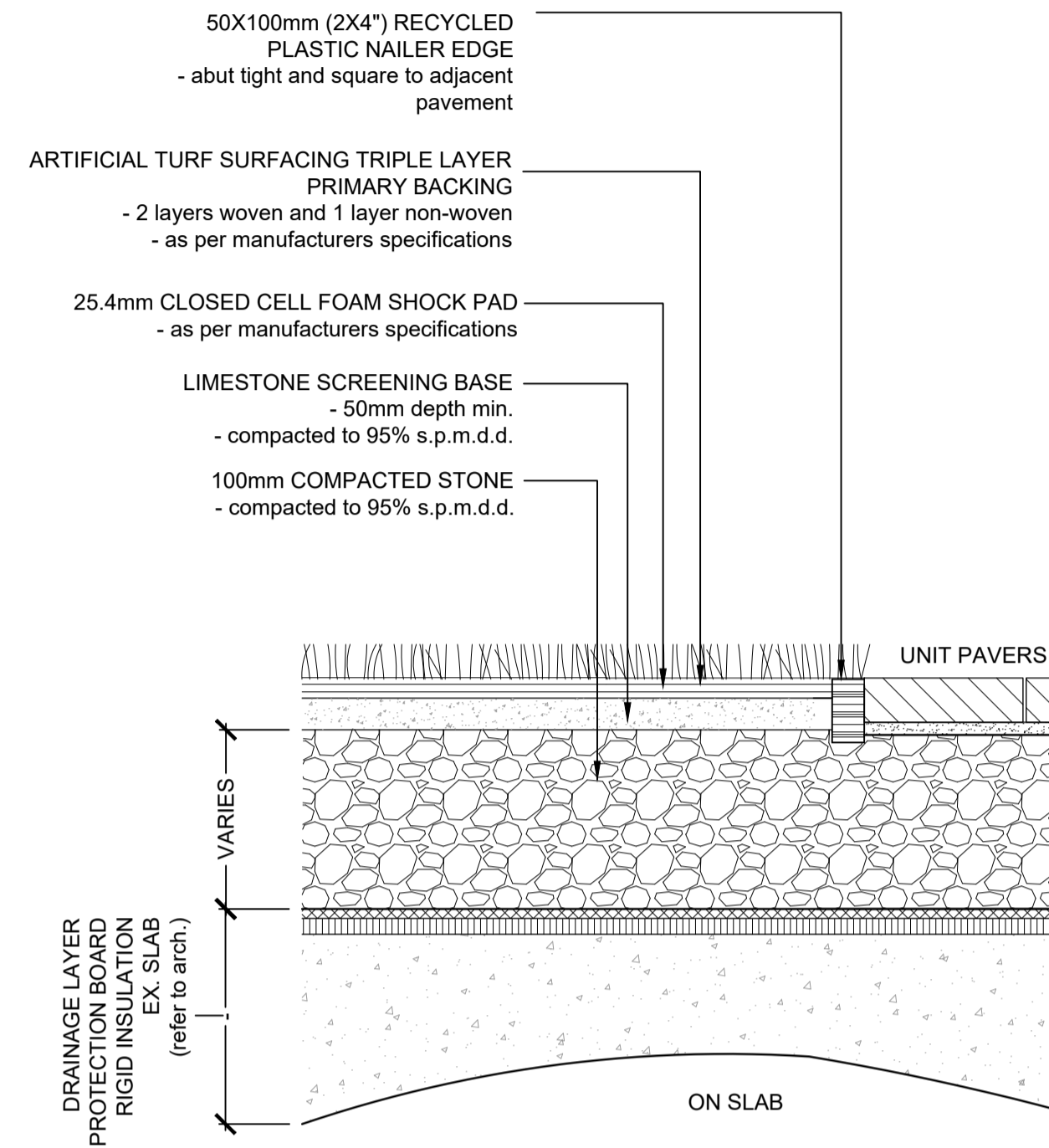
scale | échelle as shown

drawing number | numéro du dessin  
**L01.200**

**BISON 2CM PAVERS (PT-24-BISON)**  
 Colour: AXI- Brown Chestnut (wood deck pattern)  
 Fastening System: Bison FS-1 Fastening Kit  
 Modular size: 2' x 2',  
 Pedestal spacing: 2' grid  
 Standards Compliance: ASTM E108-07a Class A Spread of Flame  
 ASTM C1028-07 Slip Resistance  
 ASTM TAS108-95 Wind Uplift  
 General Notes:  
 1. Installation must be completed in accordance with bison innovative products specifications.  
 2. For product and company information visit [www.bisonip.com](http://www.bisonip.com)



REFER TO MANUFACTURER DETAILS AND SPECIFICATIONS

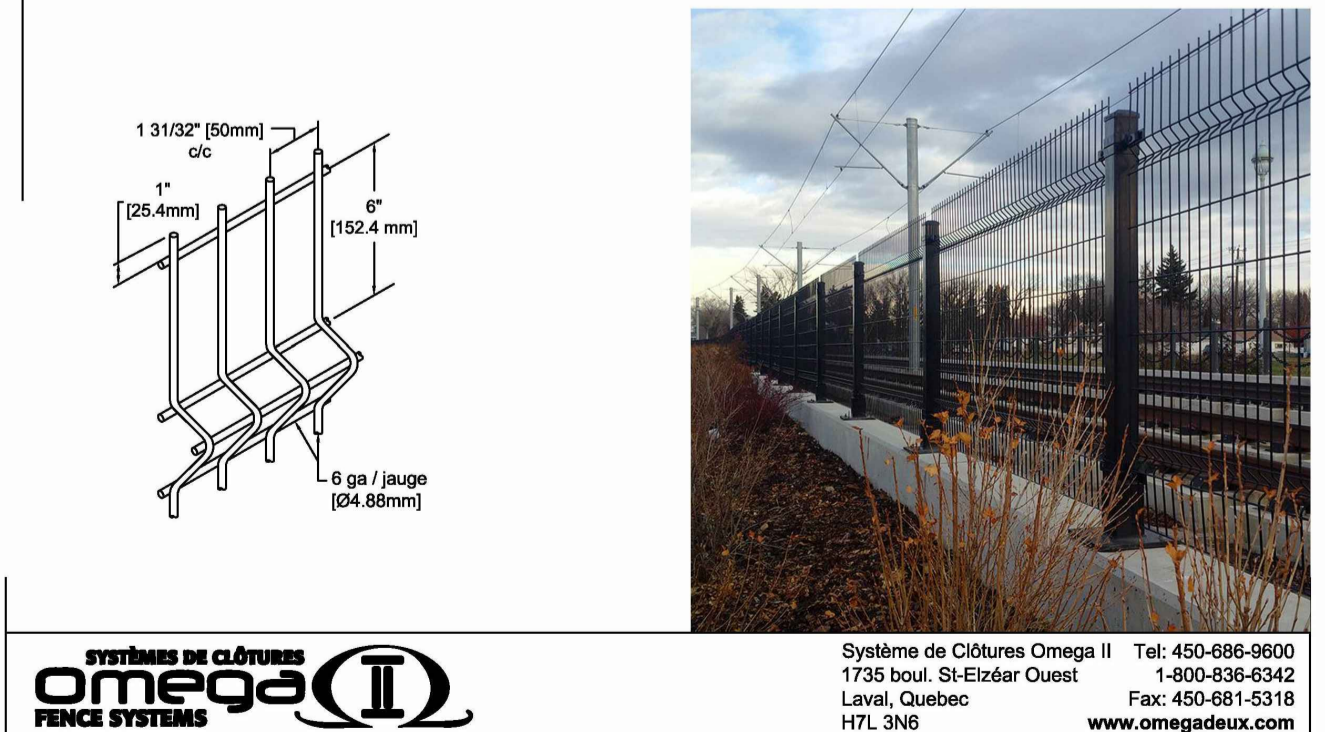
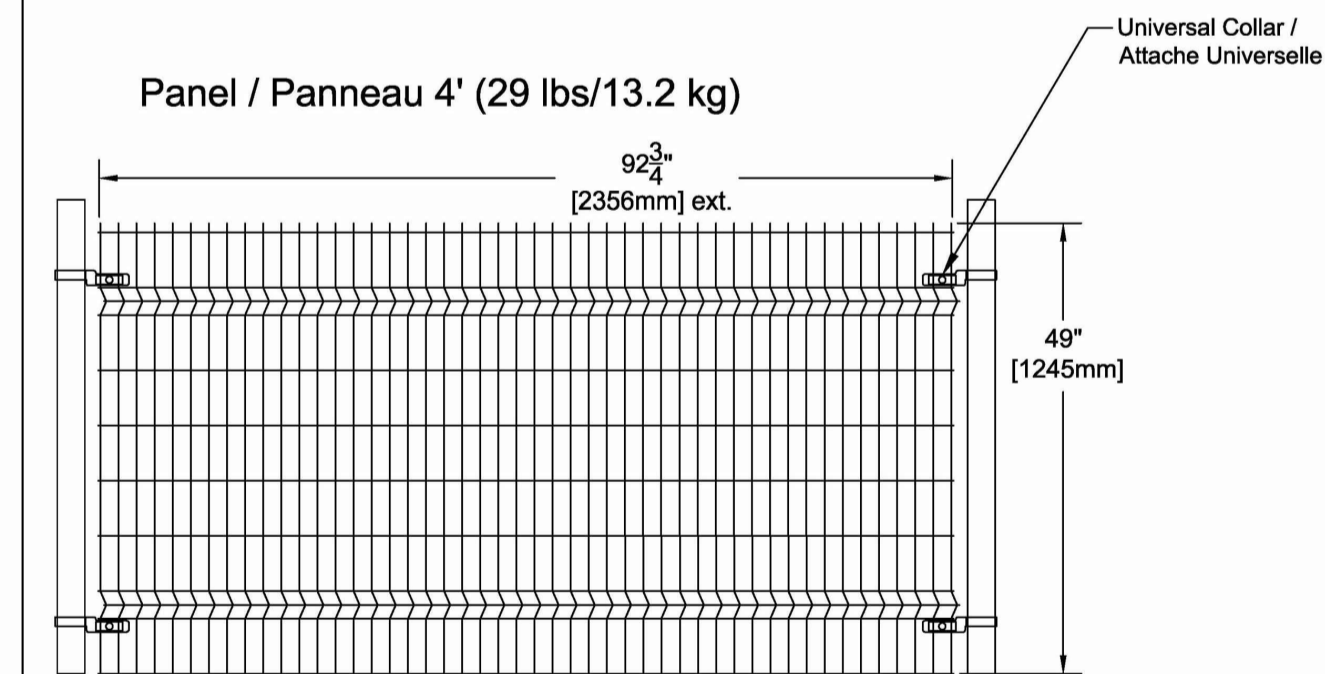


**1 CERAMIC TILE DECK OVER SLAB**  
1:10

**2 ARTIFICIAL TURF OVER SLAB**  
1:10

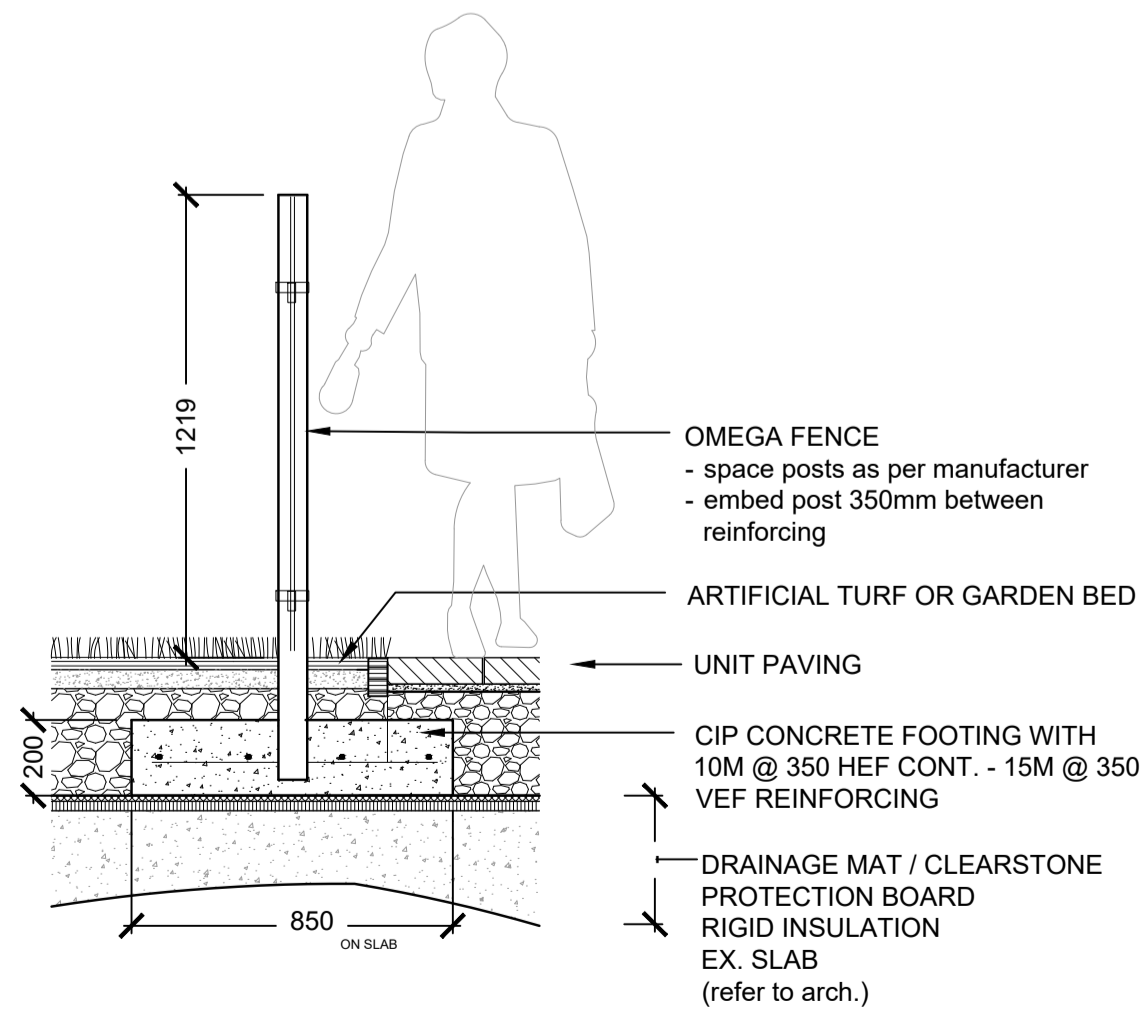
**3 CUSTOM STEEL PLANTER ON GRADE**  
1:20

**OMEGA ARCHITECTURAL PANELS MOUNTED ON SQUARE POSTS (HEIGHT 4' H)** REVISION 01  
 Panneaux Omega Architecturale sur poteaux carrés (grandeur 4' H)

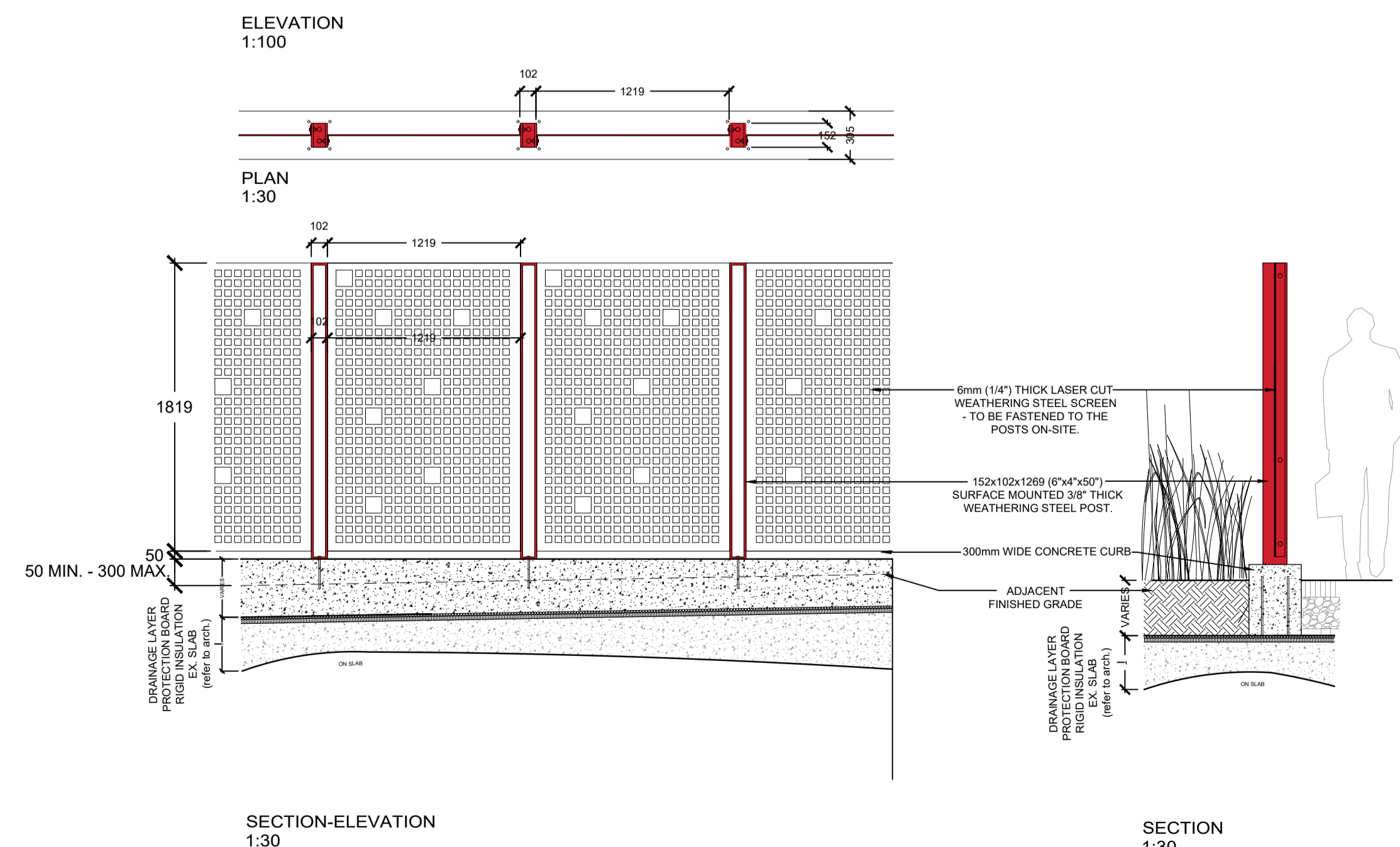


**OMEGA** SYSTEMS DE CLÔTURES  
 FENCE SYSTEMS  
 Système de Clôtures Omega II  
 1735 boul. St-Elzéar Ouest  
 Laval, Québec H7L 3N6  
 Tel: 450-686-9600  
 1-800-836-6342  
 Fax: 450-681-5318  
 www.omegadesux.com

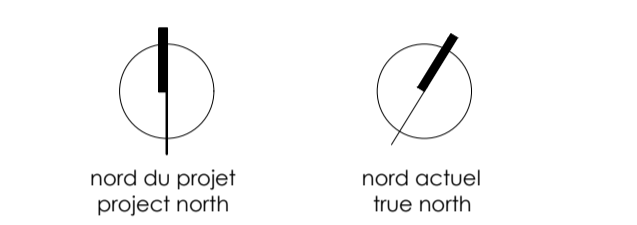
**4 ARCHITECTURAL FENCE AND GATE**  
AS SHOWN

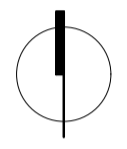


**INSTALLATION OVER SLAB DETAIL**  
1:20

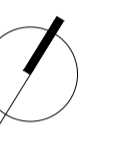


**5 LASER-CUT WEATHERING STEEL SCREEN/GATE**  
1:30

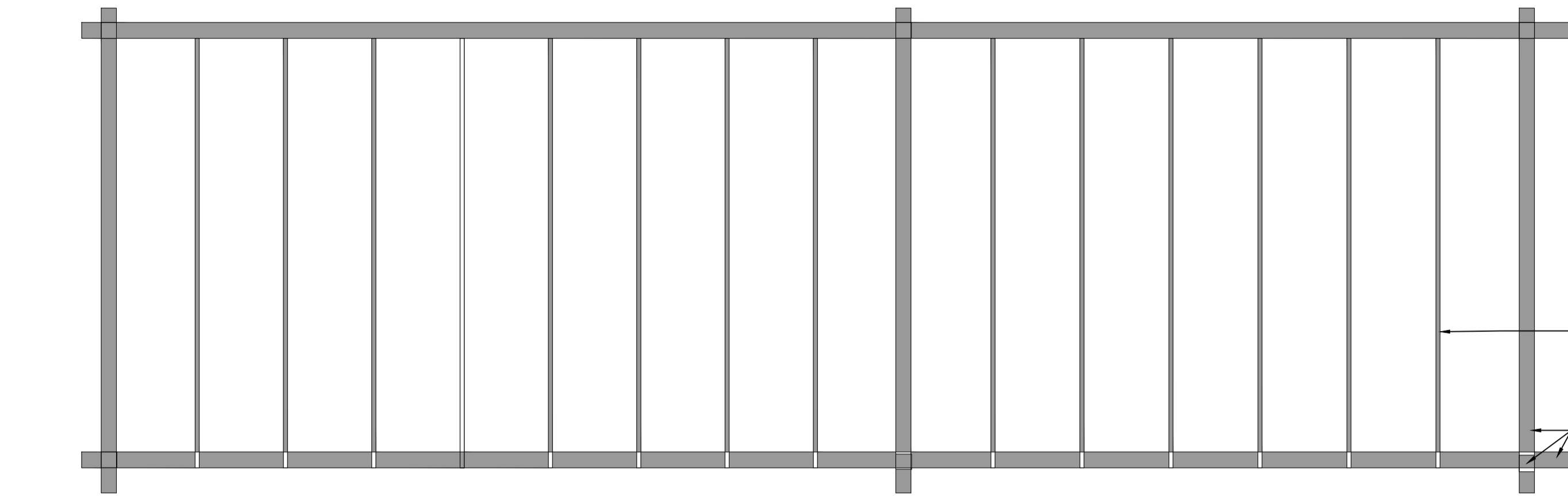




nord du projet  
project north



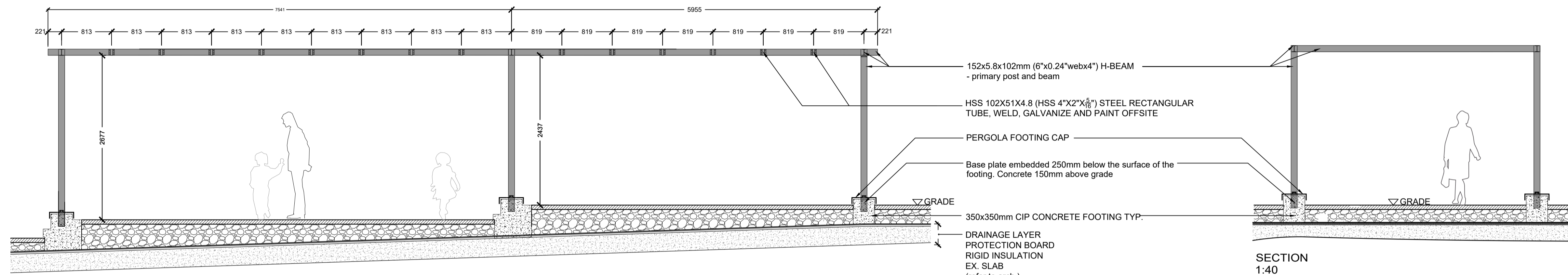
nord actuel  
true north



PLAN  
1:40

HSS 102X51X4.8 (HSS 4"x2"x $\frac{5}{8}$ ")  
STEEL RECTANGULAR TUBE,  
WELD, GALVANIZE AND PAINT  
OFFSITE

152x5.8x102mm (6"x0.24"webx4") H-BEAM  
- primary post and beam



SECTION  
1:40

152x5.8x102mm (6"x0.24"webx4") H-BEAM  
- primary post and beam

HSS 102X51X4.8 (HSS 4"x2"x $\frac{5}{8}$ ") STEEL RECTANGULAR  
TUBE, WELD, GALVANIZE AND PAINT OFFSITE

PERGOLA FOOTING CAP

Base plate embedded 250mm below the surface of the  
footing. Concrete 150mm above grade

GRADE

350x350mm CIP CONCRETE FOOTING TYP.

DRAINAGE LAYER  
PROTECTION BOARD  
RIGID INSULATION  
EX. SLAB  
(refer to arch.)

SECTION  
1:40

**1** CUSTOM STEEL PERGOLA  
1:40

01 ISSUED FOR SITE PLAN CONTROL 2019-12-06

no. revisions date

stamp | timbre



architect | architecte

general notes | note générale

1. CONTRACTOR SHALL CHECK AND VERIFY ALL DIMENSIONS AND REPORT ALL ERRORS AND OMISSIONS TO THE ARCHITECT.
2. DO NOT SCALE THE DRAWINGS.
3. NOT FOR CONSTRUCTION.

project title

**473 ALBERT**  
PROPOSED MIXED-USE RENOVATION

473 ALBERT STREET | OTTAWA | ONTARIO | CANADA

drawing title | titre du dessin

**L01**  
**LANDSCAPE DETAILS**

scale | échelle **as shown**

drawing number | numéro du dessin

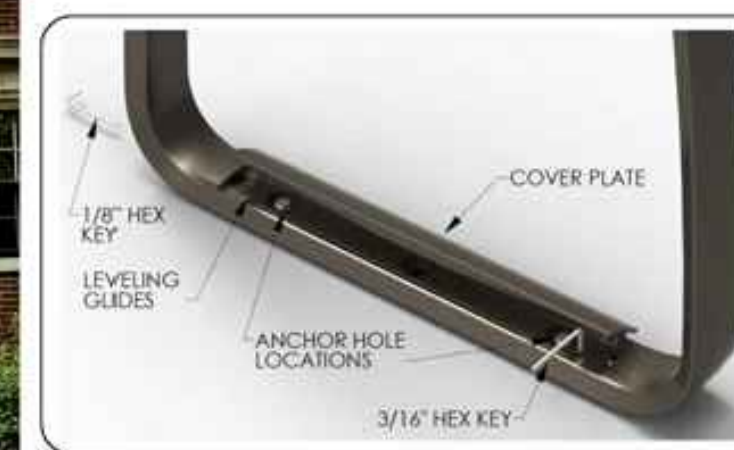
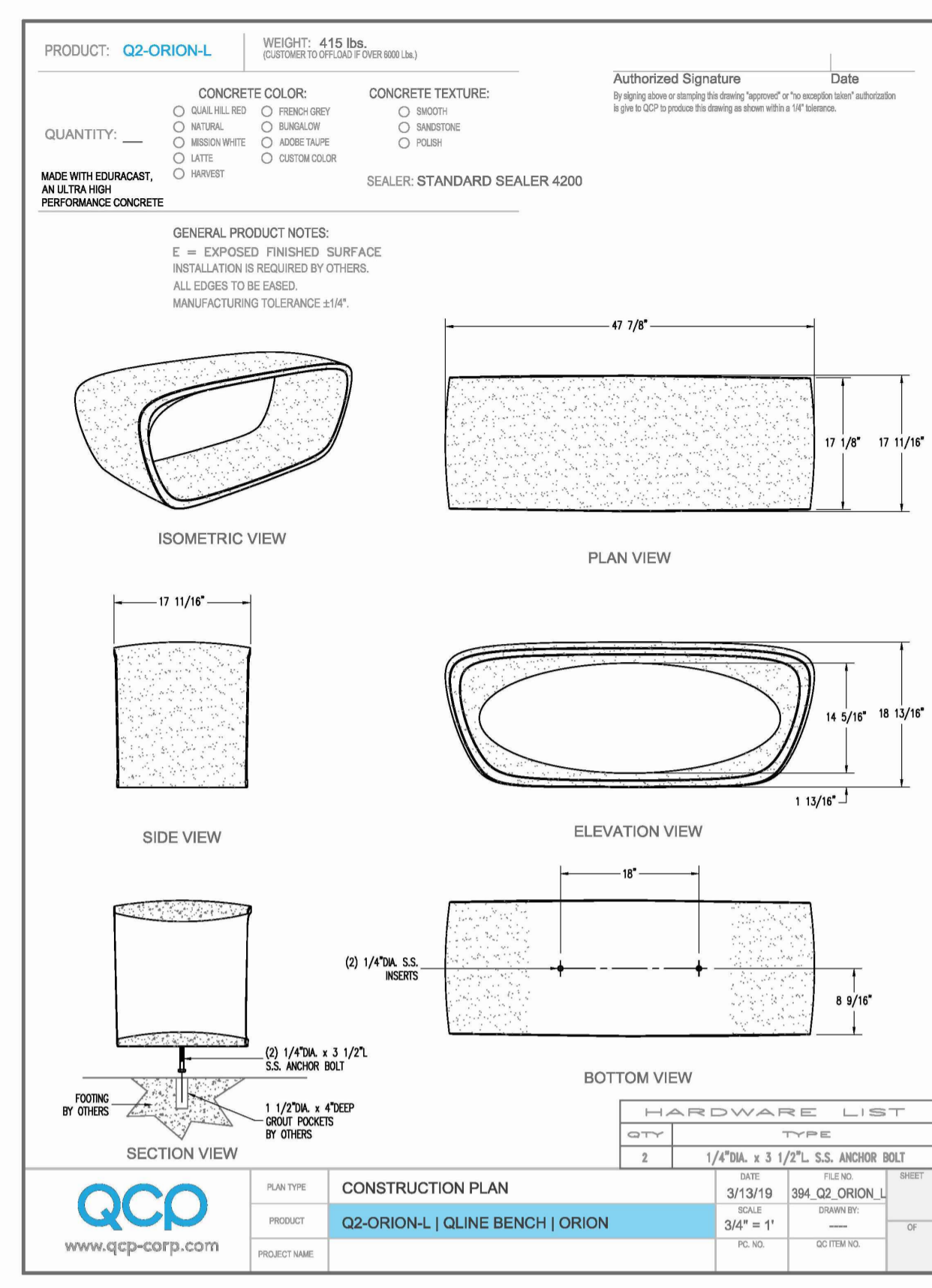
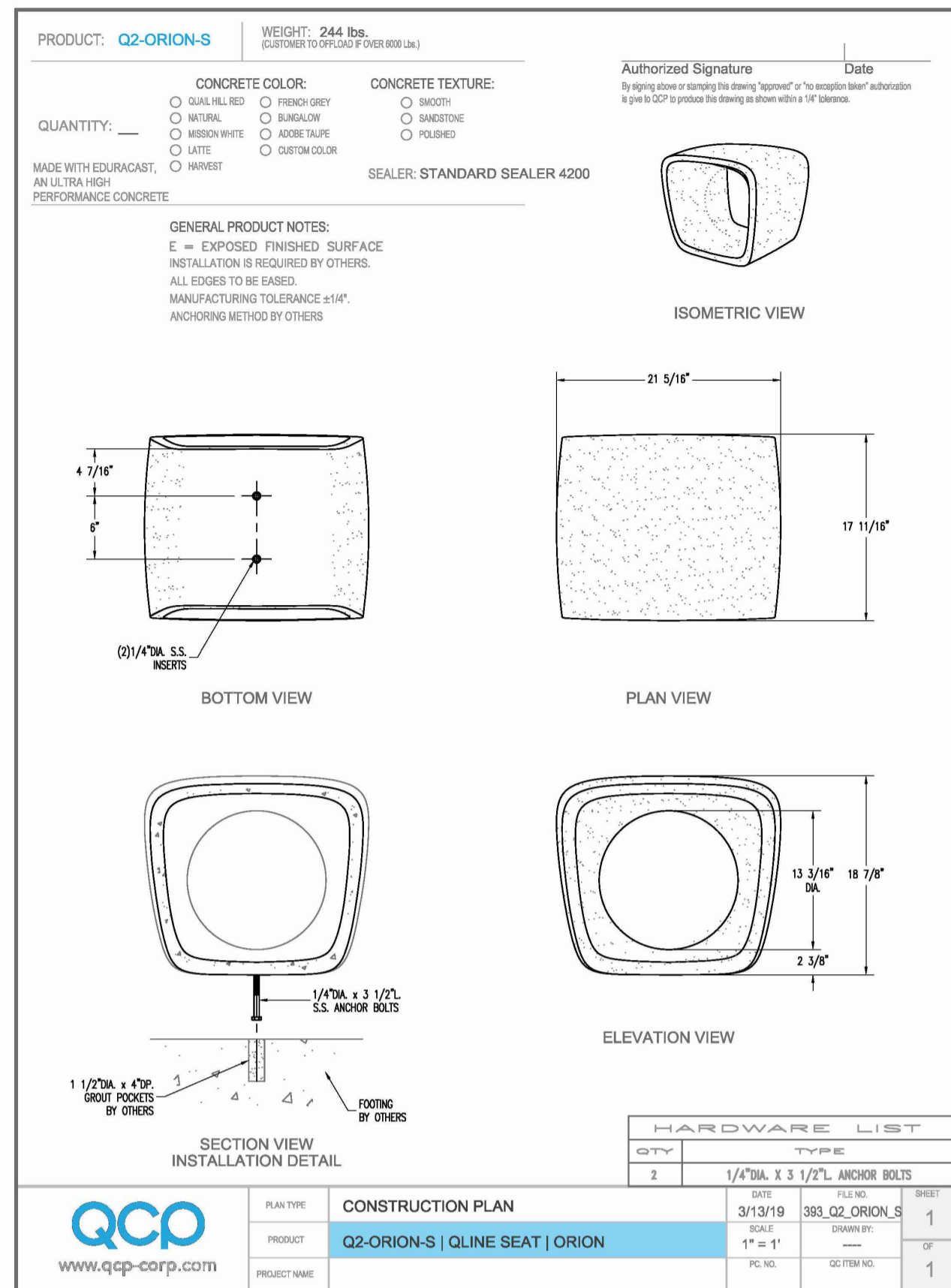


Fig. 2 - Component detail

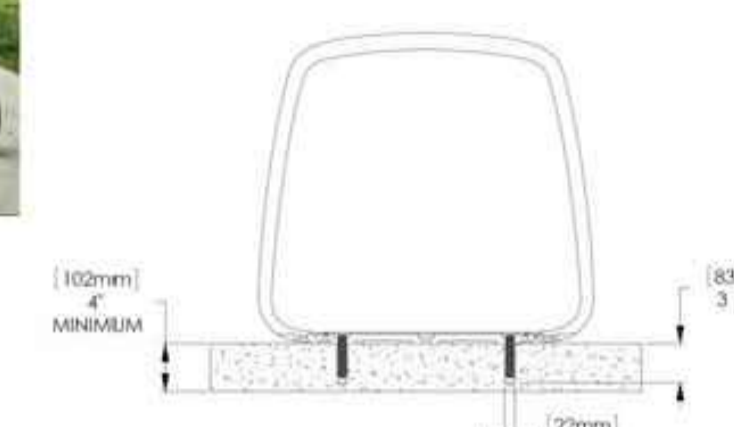


Fig. 3 - Hole size for embedded bike rack

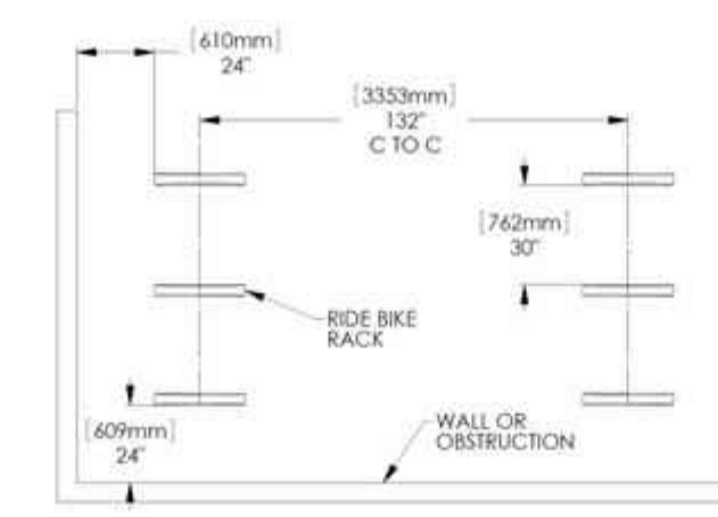


Fig. 1 - Recommended spacing, according to Association of Pedestrian and Bicycle Professionals (APBP)

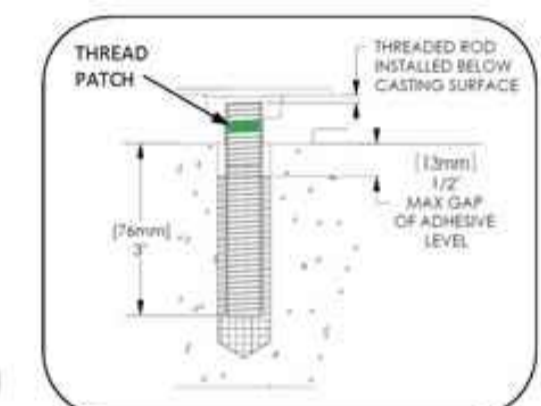
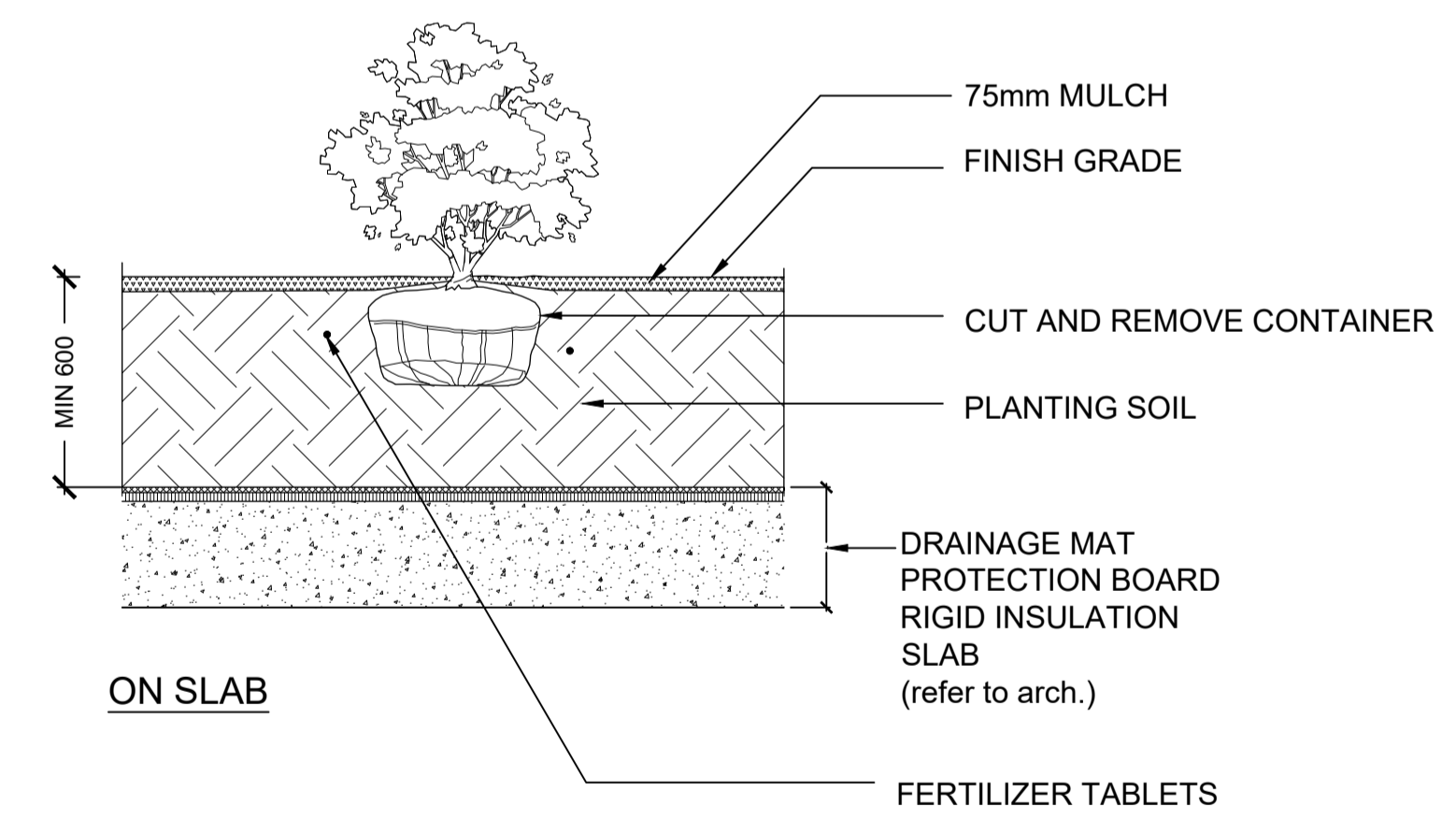


Fig. 4 - Install threaded rod

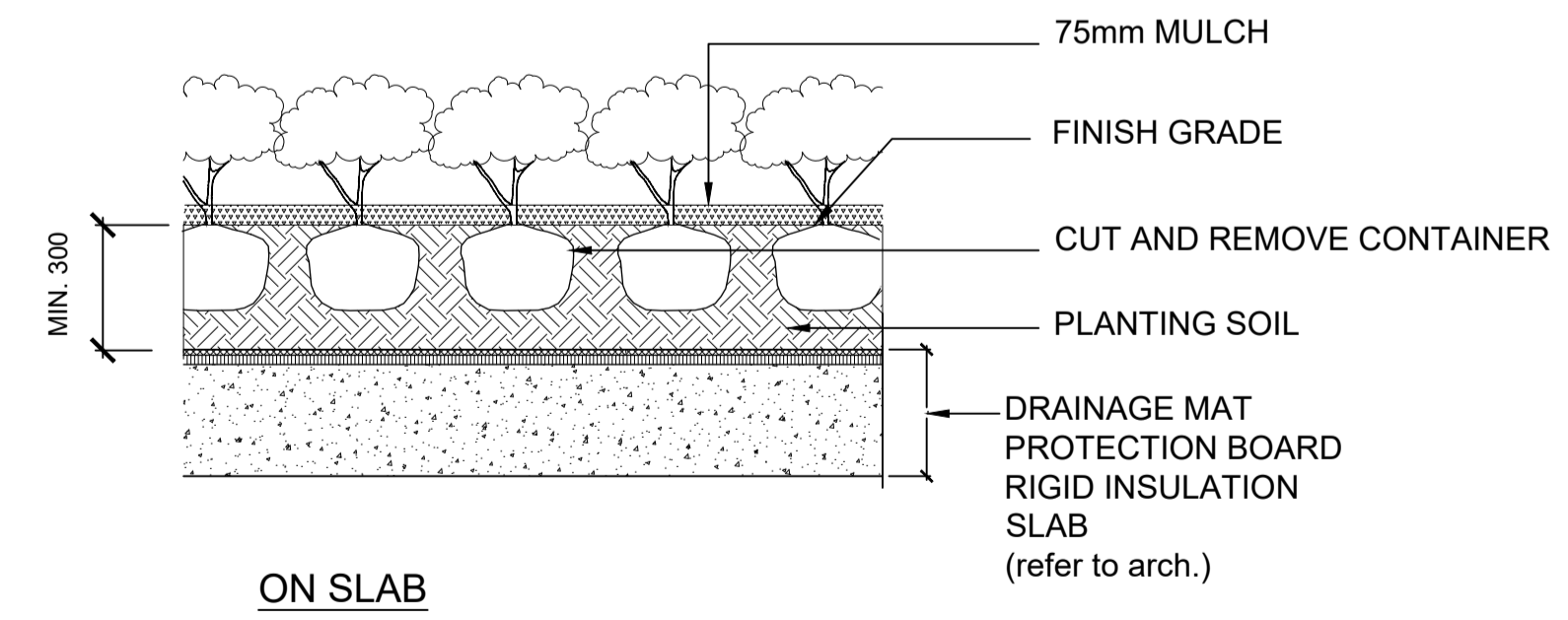
REFER TO [www.landscapeforms.com](http://www.landscapeforms.com)  
BIKE RACK TO BE ANCHORED THROUGH STONE PAVING INTO CONCRETE BASE BELOW

1 ORION SEATING AT DOG ZONE BY QCP  
NTS



GENERAL NOTES:  
-PLANTING METHOD ILLUSTRATED, APPLIES TO BOTH BARE ROOT AND BALLED STOCK.  
-SET SHRUBS 50mm HIGHER THAN SURROUNDING GRADE TO ALLOW FOR SETTLEMENT.  
-BASE OF SHRUB TO RETAIN SAME LEVEL AS FINISH GRADE.  
-SHRUBS PLANTED IN GROUPS SHALL BE SET IN CONTINUOUS BEDS.  
-PRUNE ONLY INJURED, INFECTED OR DEAD BRANCHES TO RETAIN SHAPE.  
-WATER THOROUGHLY AFTER PLANTING.

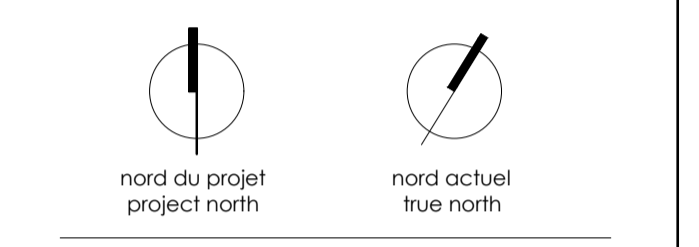
3 SHRUB PLANTING  
NTS



NOTE:  
-BASE OF PLANT TO RETAIN SAME LEVEL AS FINISH GRADE.  
-PLANTS PLANTED IN GROUPS SHALL BE SET IN CONTINUOUS BEDS.  
-PRUNE ONLY INJURED, INFECTED OR DEAD BRANCHES TO RETAIN SHAPE.  
-WATER THOROUGHLY AFTER PLANTING.

4 PERENNIAL AND GRASS PLANTING  
1:20

2 BICYCLE RACK: "RIDE" BY LANDSCAPE FORMS  
NTS  
INSTALL AS PER MANUFACTURER INSTRUCTIONS



01	ISSUED FOR SITE PLAN CONTROL	2019-12-06
no	revisions	date
stamp   timbre		



general notes | note générale  
1. CONTRACTOR SHALL CHECK AND VERIFY ALL DIMENSIONS AND REPORT ALL ERRORS AND OMISSIONS TO THE ARCHITECT.  
2. DO NOT SCALE THE DRAWINGS.  
3. NOT FOR CONSTRUCTION.

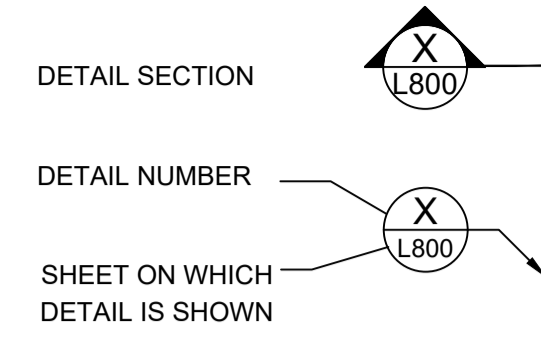
project title  
**473 ALBERT**  
PROPOSED MIXED-USE RENOVATION  
473 ALBERT STREET | OTTAWA | ONTARIO | CANADA  
drawing title | titre du dessin

L01  
LANDSCAPE DETAILS

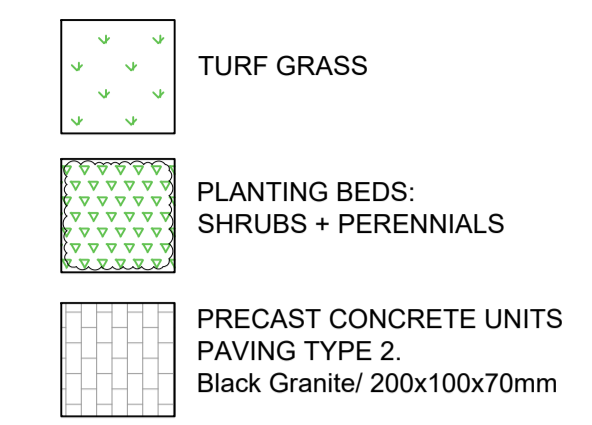
scale | échelle as shown

drawing number | numéro du dessin

LEGEND



MATERIAL LEGEND



owner | propriétaire

**CLELAND JARDINE**  
ENGINEERING LTD  
1613 581-1153

structural engineers | ingénieur structure

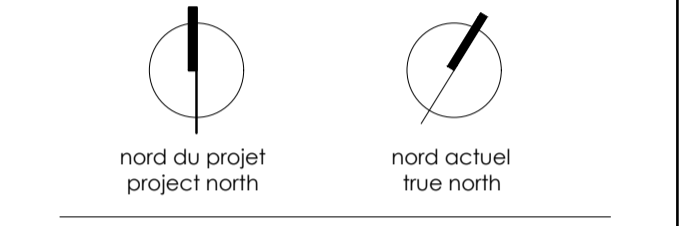
**Smith + Andersen**  
530 - 1600 Carling Avenue Ottawa Ontario K1Z 1G3  
1 613 230 1186 smithandandersen.com  
MEP engineers | ingénieur MEP

**PARSONS**  
1223 MICHAEL STREET, SUITE 100, OTTAWA, ONTARIO K1J 7T2  
Tel: 613-738-4160 Fax: 613-738-7105

civil engineers | ingénieur civil

**Forest and Field**  
Landscape Architecture  
205 - 720 Bathurst Street Toronto Ontario M5S 2R4  
1 647 933 1151 forestandfield.ca

landscape architects | architectes paysagistes



01 ISSUED FOR SITE PLAN CONTROL 2019-12-06  
no revisions date



architect | architecte

**linebox**  
STUDIO

general notes | note générale

- CONTRACTOR SHALL CHECK AND VERIFY ALL DIMENSIONS AND REPORT ALL ERRORS AND OMISSIONS TO THE ARCHITECT.
- DO NOT SCALE THE DRAWINGS.
- NOT FOR CONSTRUCTION.

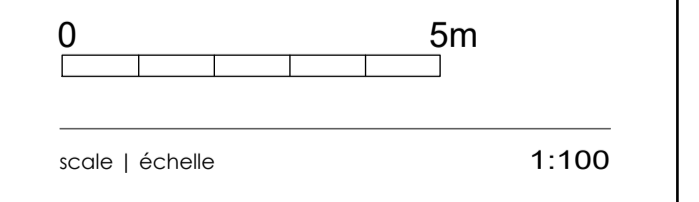
project title

**473 ALBERT**  
PROPOSED MIXED-USE RENOVATION

473 ALBERT STREET | OTTAWA | ONTARIO | CANADA

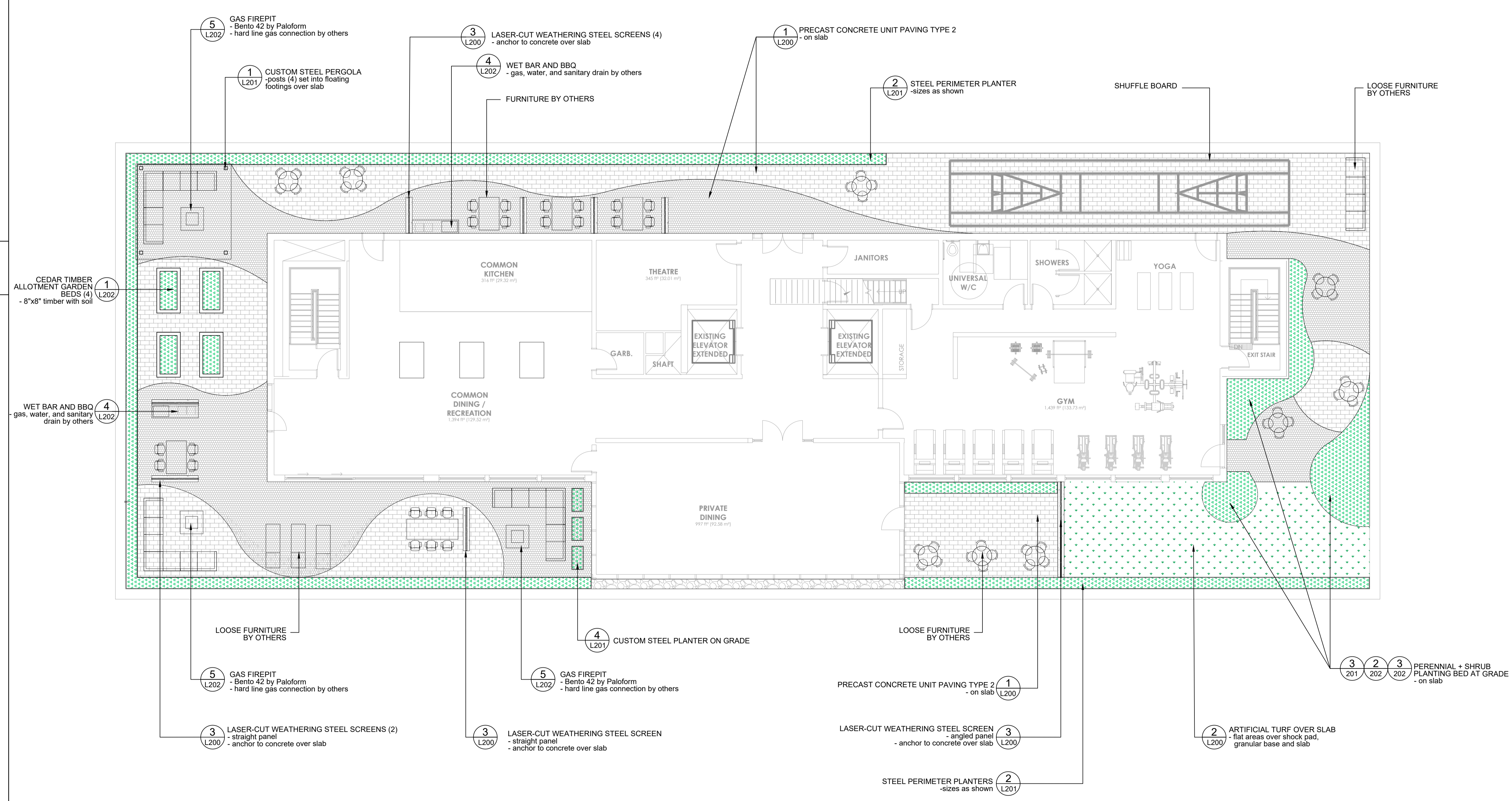
drawing title | titre du dessin

**L12**  
**MATERIALS PLAN**



drawing number | numéro du dessin

**L12.100**



5 L202 GAS FIREPIT  
- Bento 42 by Paloform  
- hard line gas connection by others

1 L201 CUSTOM STEEL PERGOLA  
- posts (4) set into floating  
footings over slab

3 L200 LASER-CUT WEATHERING STEEL SCREENS (4)  
- anchor to concrete over slab

4 L202 WET BAR AND BBO  
- gas, water, and sanitary drain by others

1 L200 PRECAST CONCRETE UNIT PAVING TYPE 2  
- on slab

2 L201 STEEL PERIMETER PLANTER  
- sizes as shown

SHUFFLE BOARD

LOOSE FURNITURE  
BY OTHERS

1 L202 CEDAR TIMBER  
ALLOTMENT GARDEN  
BEDS (4)  
- 8"x8" timber with soil

4 L202 WET BAR AND BBO  
- gas, water, and sanitary  
drain by others

LOOSE FURNITURE  
BY OTHERS

5 L202 GAS FIREPIT  
- Bento 42 by Paloform  
- hard line gas connection by others

3 L200 LASER-CUT WEATHERING STEEL SCREENS (2)  
- straight panel  
- anchor to concrete over slab

5 L202 GAS FIREPIT  
- Bento 42 by Paloform  
- hard line gas connection by others

3 L200 LASER-CUT WEATHERING STEEL SCREEN  
- straight panel  
- anchor to concrete over slab

4 L201 CUSTOM STEEL PLANTER ON GRADE

LOOSE FURNITURE  
BY OTHERS

1 L200 PRECAST CONCRETE UNIT PAVING TYPE 2  
- on slab

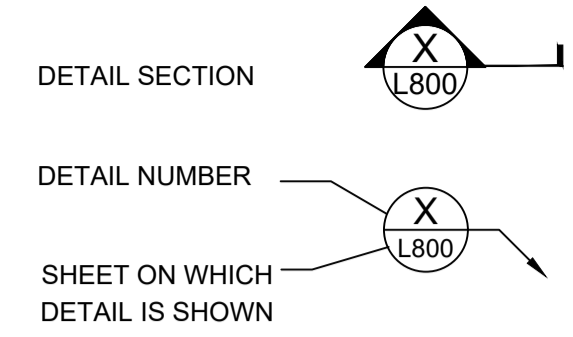
3 L200 LASER-CUT WEATHERING STEEL SCREEN  
- angled panel  
- anchor to concrete over slab

2 L201 STEEL PERIMETER PLANTERS  
- sizes as shown

2 L200 ARTIFICIAL TURF OVER SLAB  
- flat areas over shock pad,  
granular base and slab

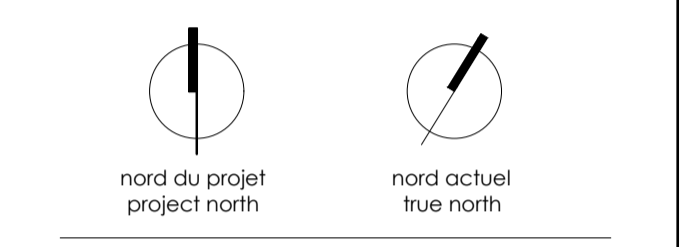
3 L201 PERENNIAL + SHRUB  
PLANTING BED AT GRADE  
- on slab

LEGEND



MATERIAL LEGEND

- ARTIFICIAL GRASS
- PLANTING BEDS: SHRUBS + PERENNIALS
- PRECAST CONCRETE UNITS PAVING TYPE 1. Mountain Mist/ 360x180x80mm
- PRECAST CONCRETE UNITS PAVING TYPE 2. Black Granite/ 200x100x70mm



01 ISSUED FOR SITE PLAN CONTROL 2019-12-20

no revisions date



architect | architecte

**linebox STUDIO**

general notes | note générale

- CONTRACTOR SHALL CHECK AND VERIFY ALL DIMENSIONS AND REPORT ALL ERRORS AND OMISSIONS TO THE ARCHITECT.
- DO NOT SCALE THE DRAWINGS.
- NOT FOR CONSTRUCTION.

project title

**473 ALBERT**

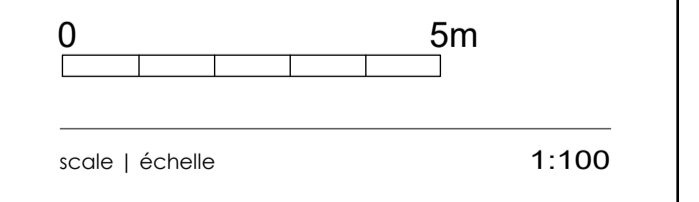
PROPOSED MIXED-USE RENOVATION

473 ALBERT STREET | OTTAWA | ONTARIO | CANADA

drawing title | titre du dessin

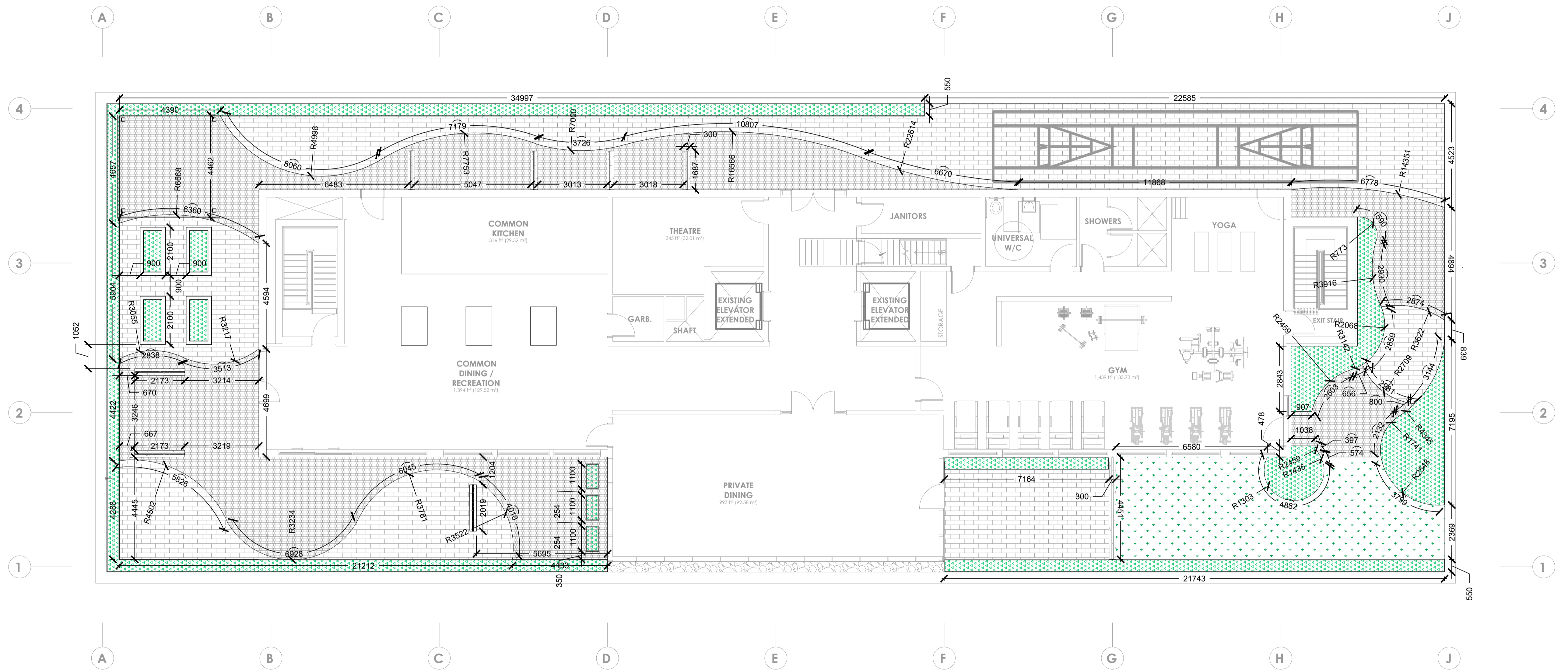
**L12**

**HARDSCAPE PLAN**



drawing number | numéro du dessin

**L12.101**









nord du projet  
project north



nord actuel  
true north

01 ISSUED FOR SITE PLAN CONTROL 2019-12-06

no revisions date

stamp | timbre



architect | architecte

**linebox**  
STUDIO

general notes | note générale

1. CONTRACTOR SHALL CHECK AND VERIFY ALL DIMENSIONS AND REPORT ALL ERRORS AND OMISSIONS TO THE ARCHITECT.
2. DO NOT SCALE THE DRAWINGS.
3. NOT FOR CONSTRUCTION.

project title

**473 ALBERT**

PROPOSED MIXED-USE RENOVATION

473 ALBERT STREET | OTTAWA | ONTARIO | CANADA

drawing title | titre du dessin

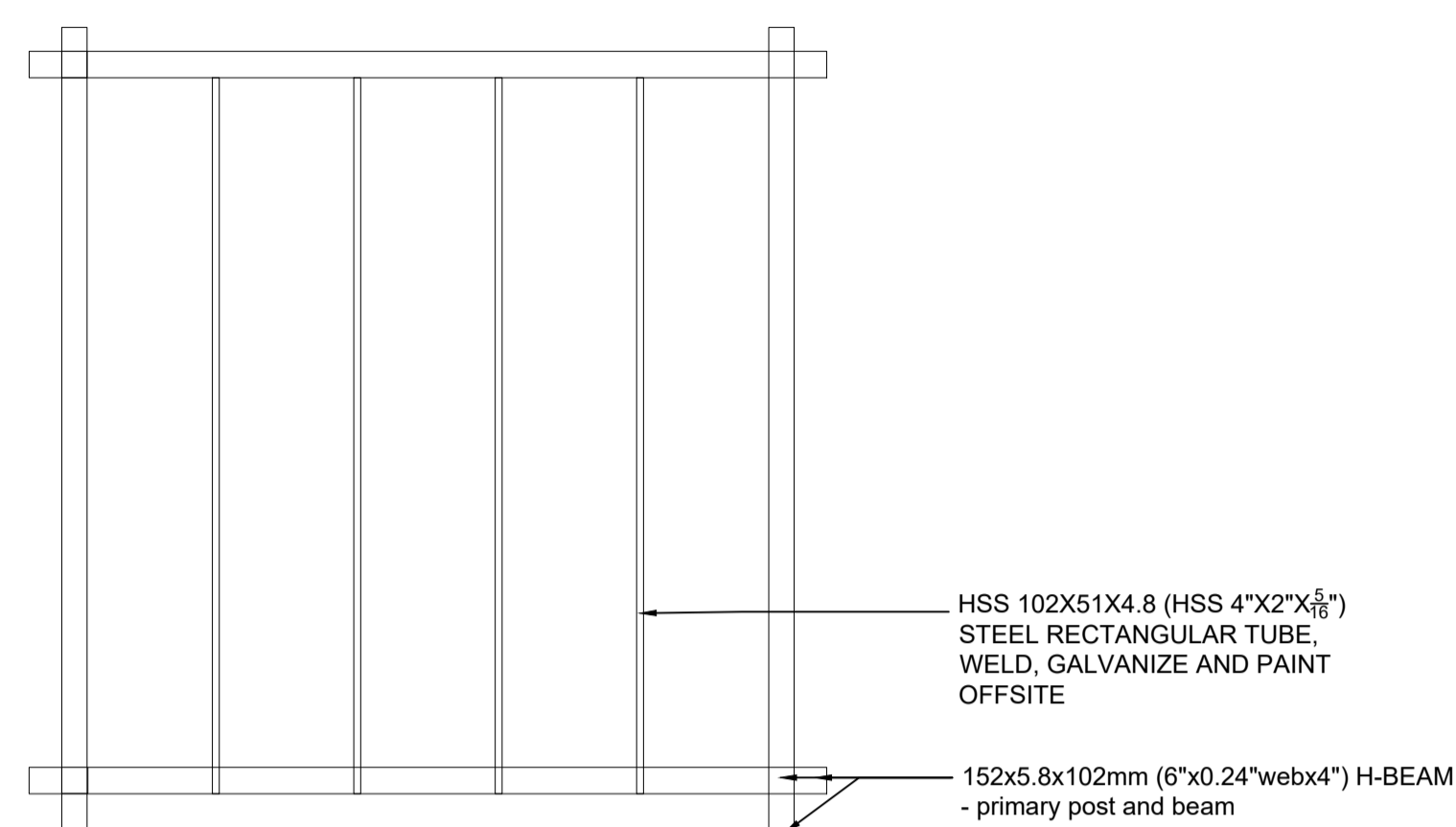
**L12**  
LANDSCAPE DETAILS

scale | échelle

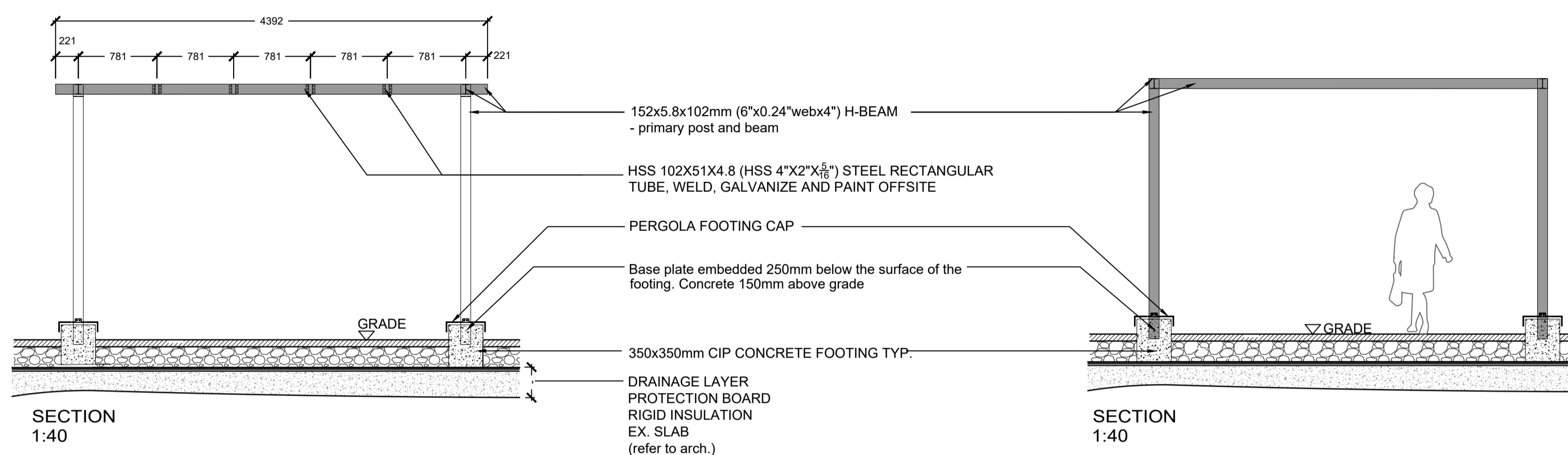
as shown

drawing number | numéro du dessin

**L12.201**



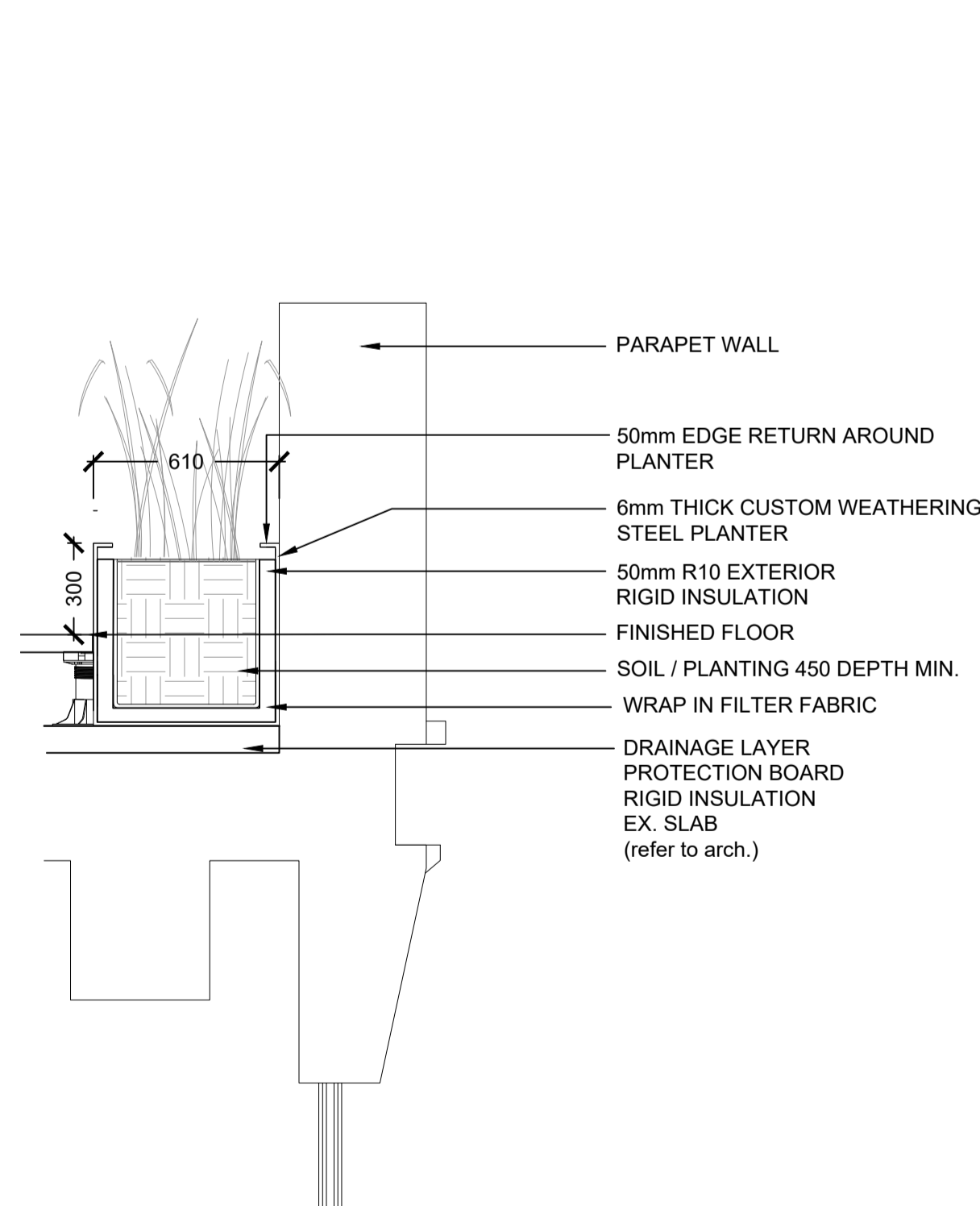
PLAN  
1:40



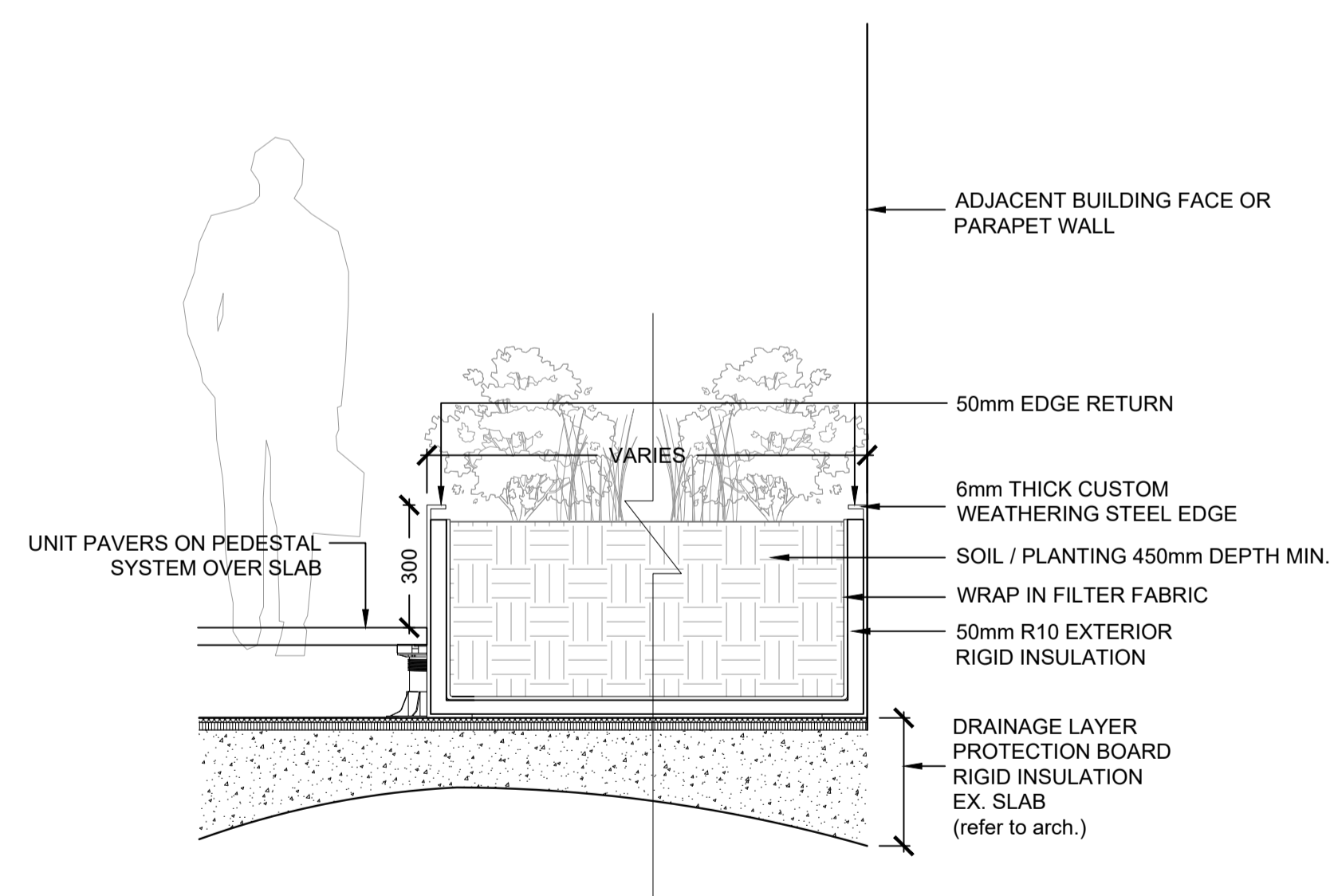
SECTION  
1:40

SECTION  
1:40

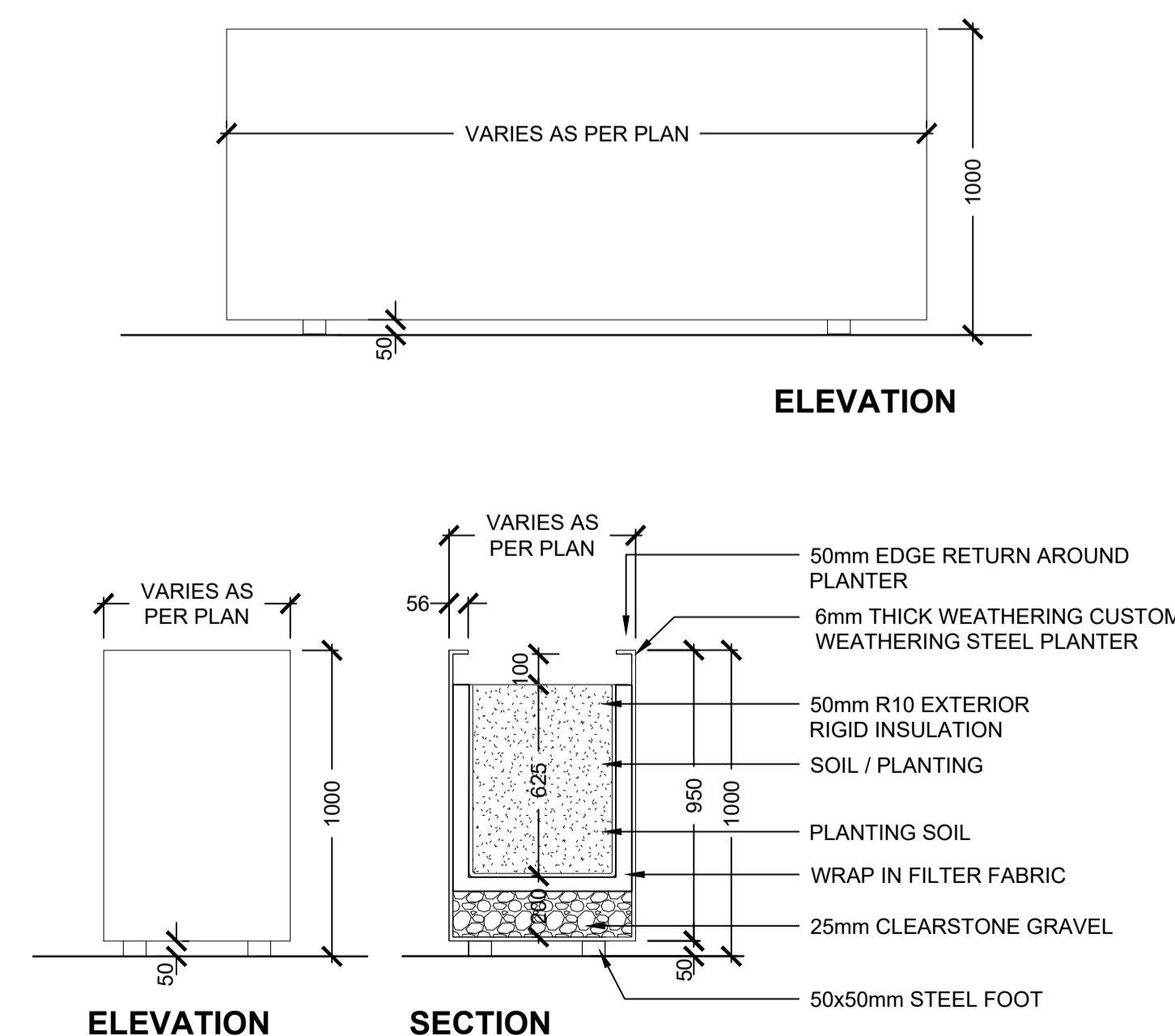
**1** CUSTOM STEEL PERGOLA  
1:40



**2** STEEL PERIMETER PLANTERS  
1:20



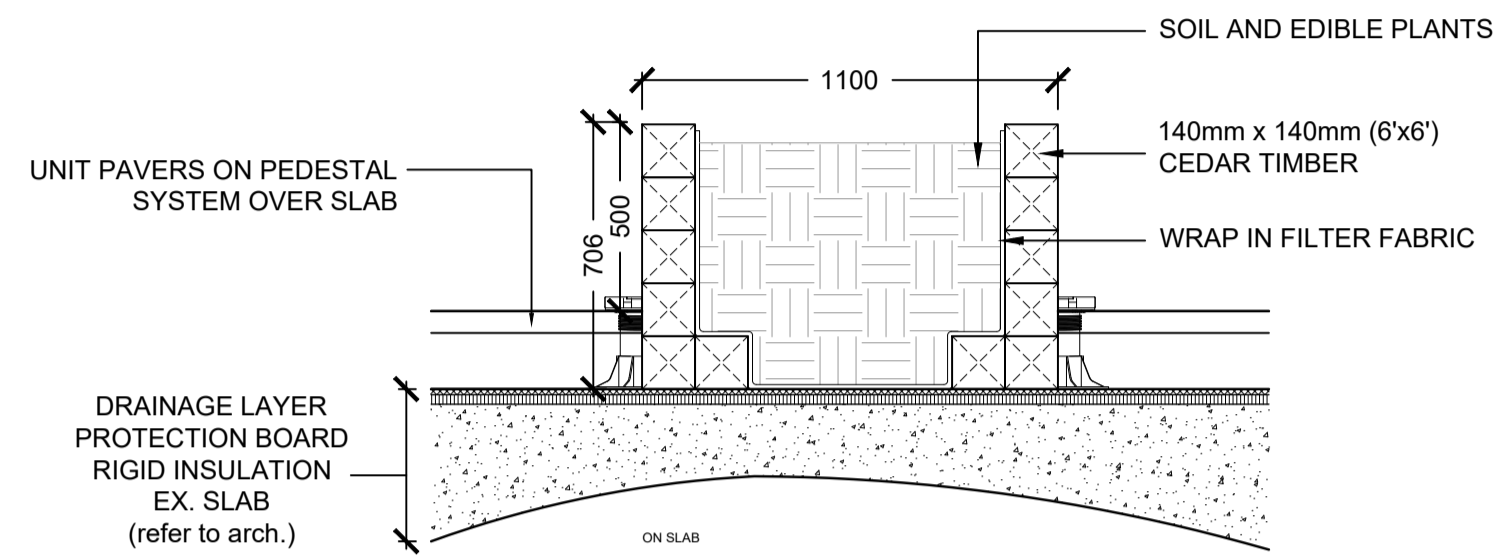
**3** RAISED PERENNIAL AND SHRUB PLANTING BEDS ON SLAB  
1:20



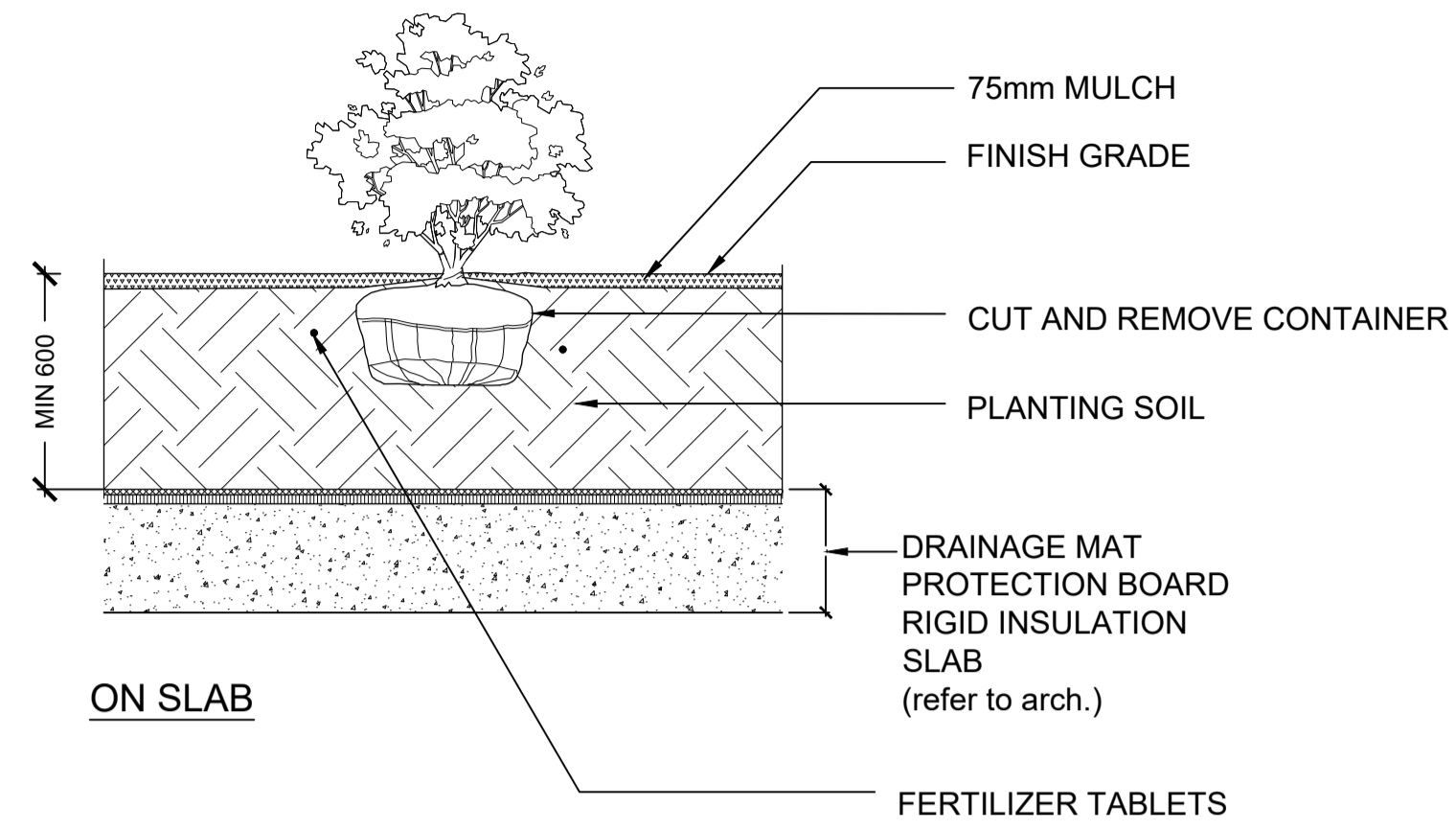
ELEVATION

SECTION

**4** CUSTOM STEEL PLANTER ON GRADE  
1:20

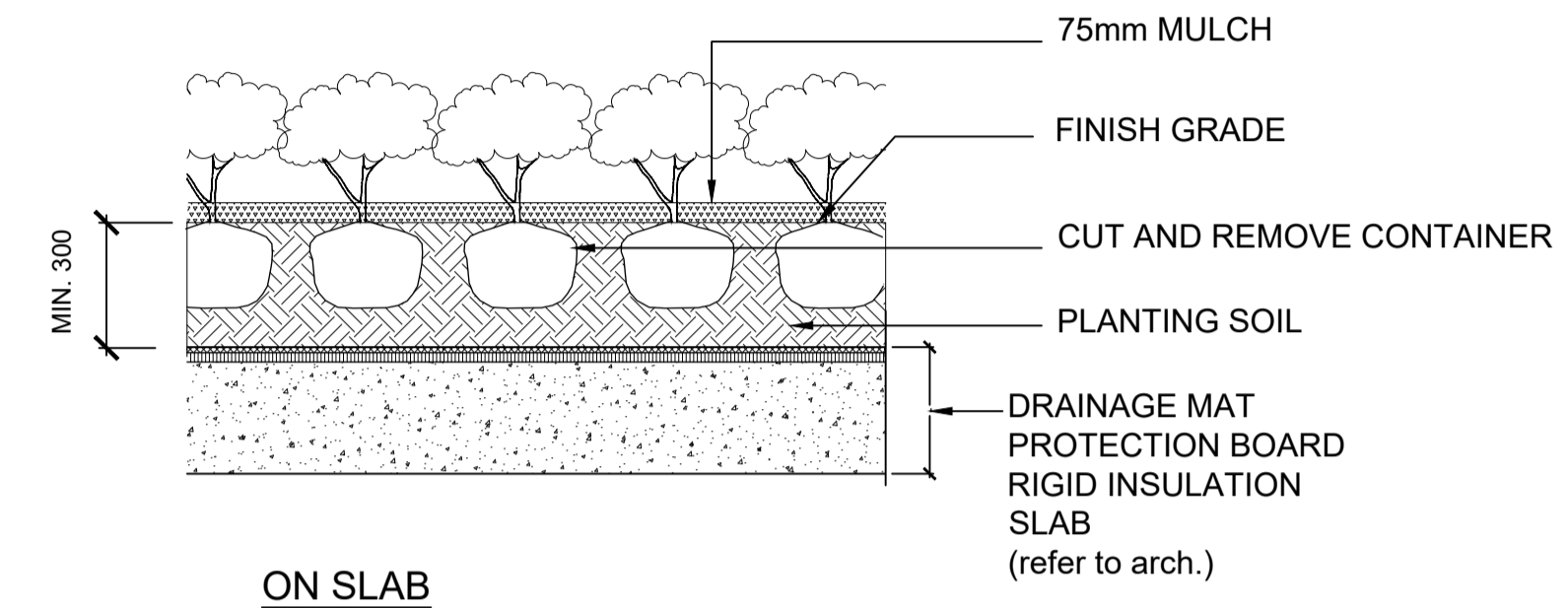


**1 CEDAR TIMBER ALLOTMENT GARDEN BEDS**  
1:20



**GENERAL NOTES:**  
 -PLANTING METHOD ILLUSTRATED, APPLIES TO BOTH BARE ROOT AND BALLED STOCK.  
 -SET SHRUBS 50mm HIGHER THAN SURROUNDING GRADE TO ALLOW FOR SETTLEMENT.  
 -BASE OF SHRUB TO RETAIN SAME LEVEL AS FINISH GRADE.  
 -SHRUBS PLANTED IN GROUPS SHALL BE SET IN CONTINUOUS BEDS.  
 -PRUNE ONLY INJURED, INFECTED OR DEAD BRANCHES TO RETAIN SHAPE.  
 -WATER THOROUGHLY AFTER PLANTING.

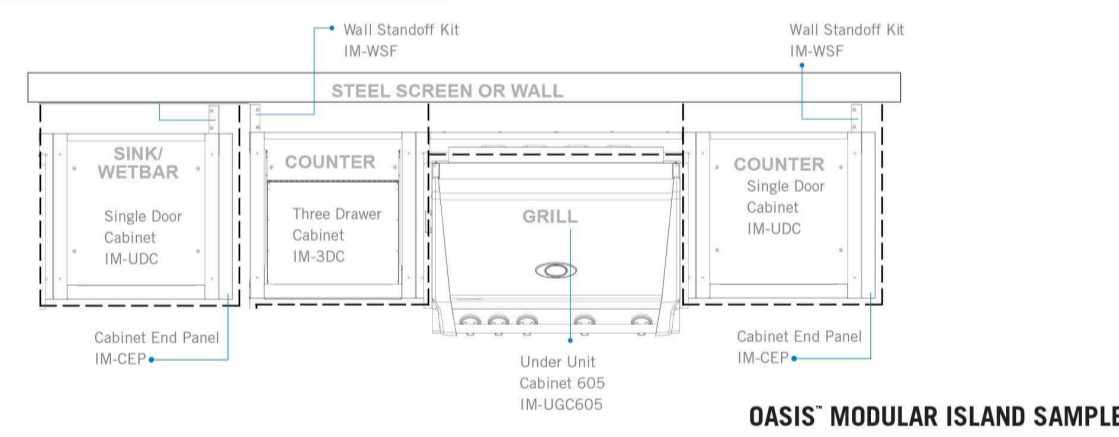
**2 SHRUB PLANTING**  
NTS



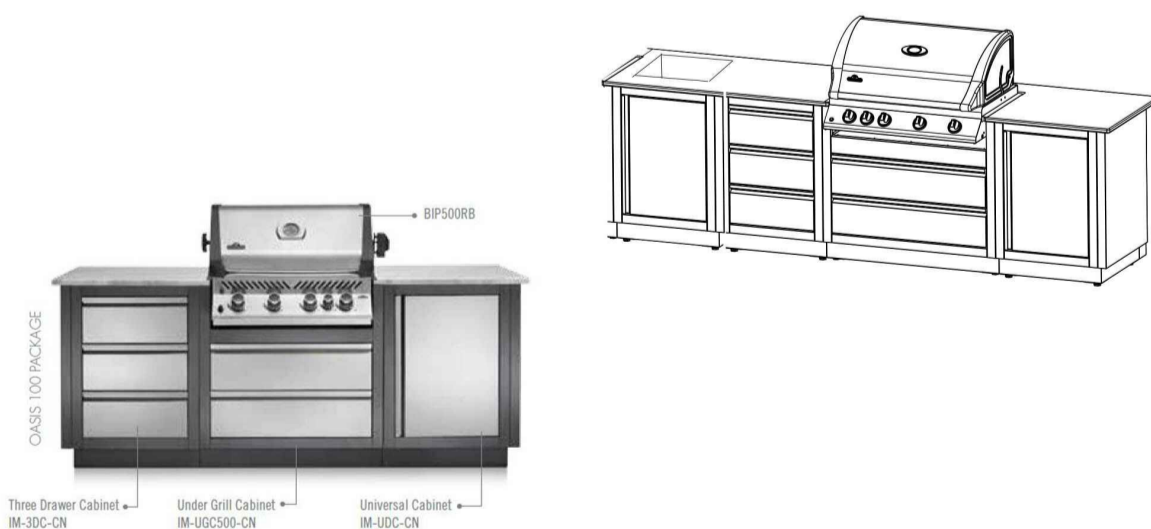
**NOTE:**  
 -BASE OF PLANT TO RETAIN SAME LEVEL AS FINISH GRADE.  
 -PLANTS PLANTED IN GROUPS SHALL BE SET IN CONTINUOUS BEDS.  
 -PRUNE ONLY INJURED, INFECTED OR DEAD BRANCHES TO RETAIN SHAPE.  
 -WATER THOROUGHLY AFTER PLANTING.

**3 PERENNIAL AND GRASS PLANTING**  
1:20

The Napoleon Oasis<sup>™</sup> Modular Island series has been developed with versatility in mind.



OASIS<sup>™</sup> MODULAR ISLAND SAMPLE



The countertop material must be non-combustible if a grill is to be installed into it. They can be ordered in advance by drawing out the floor plan of how the cabinets will be situated and adding up the width measurements, allowing 1/2" of countertop overhang. Most countertop manufacturers are willing to come and take measurements after assembly of the cabinets is complete to ensure a perfect fit. For best results the countertop thickness should be between 1 1/2" to 2" thick. The built-in grill head comes with stainless steel brackets and hardware that allow the unit to rest on the countertop above the corresponding island cabinet for that unit. Granite is an excellent choice of countertop material. Decorative countertops made of ceramic tile set on top of cement slab board can be selected to match your surrounding kitchen furniture color.  
 \*Countertops must be ordered and supplied locally by the homeowner.

**BUILT-IN NATURAL GAS HOOK-UP**

The piping up to the gas grill is the responsibility of the installer and piping should be located as shown in the built-in instructions. Do not use hose to connect the unit. It must be connected with rigid pipe, copper pipe or an approved flexible metal connector which complies with CSA 4.4-08 or IS. The installation must comply with CAN/CSA 4.4.1, National Gas and Piping Installation Code in Canada or to the National Fuel Gas Code, ANSI Z223.1 in the United States. The gas supply pipe must be sufficiently sized to supply the BTU/h specified on the rating plate, based on the length of the piping run. If installing a side burner, a separate line must be branched off to the side burner unit and enter the side burner opening at the specified location.

**4 WET BAR AND BBQ**  
1:20

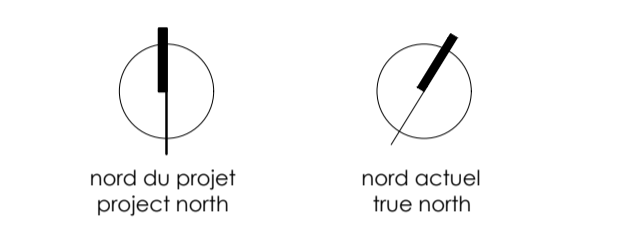
**5 GAS FIREPIT**  
1:20

owner | propriétaire

structural engineers | ingénieur structure

civil engineers | ingénieur civil

landscape architects | architectes paysagistes



01 ISSUED FOR SITE PLAN CONTROL 2019-12-06

no revisions date

stamp | timbre



architect | architecte

general notes | note générale  
 1. CONTRACTOR SHALL CHECK AND VERIFY ALL DIMENSIONS AND REPORT ALL ERRORS AND OMISSIONS TO THE ARCHITECT.  
 2. DO NOT SCALE THE DRAWINGS.  
 3. NOT FOR CONSTRUCTION.

project title

**473 ALBERT**  
 PROPOSED MIXED-USE RENOVATION

473 ALBERT STREET | OTTAWA | ONTARIO | CANADA

drawing title | titre du dessin

**L12 LANDSCAPE DETAILS**

scale | échelle as shown

drawing number | numéro du dessin