

ISSUED FOR SITE PLAN CONTROL MAR 05, 2021
 no revisions date
 stamp | timbre



architect | architecte
linebox
 STUDIO

general notes | note générale
 1. CONTRACTOR SHALL CHECK AND VERIFY ALL DIMENSIONS AND REPORT ALL ERRORS AND OMISSIONS TO THE ARCHITECT.
 2. DO NOT SCALE THE DRAWINGS.
 3. NOT FOR CONSTRUCTION UNTIL SIGNED BY THE ARCHITECT.

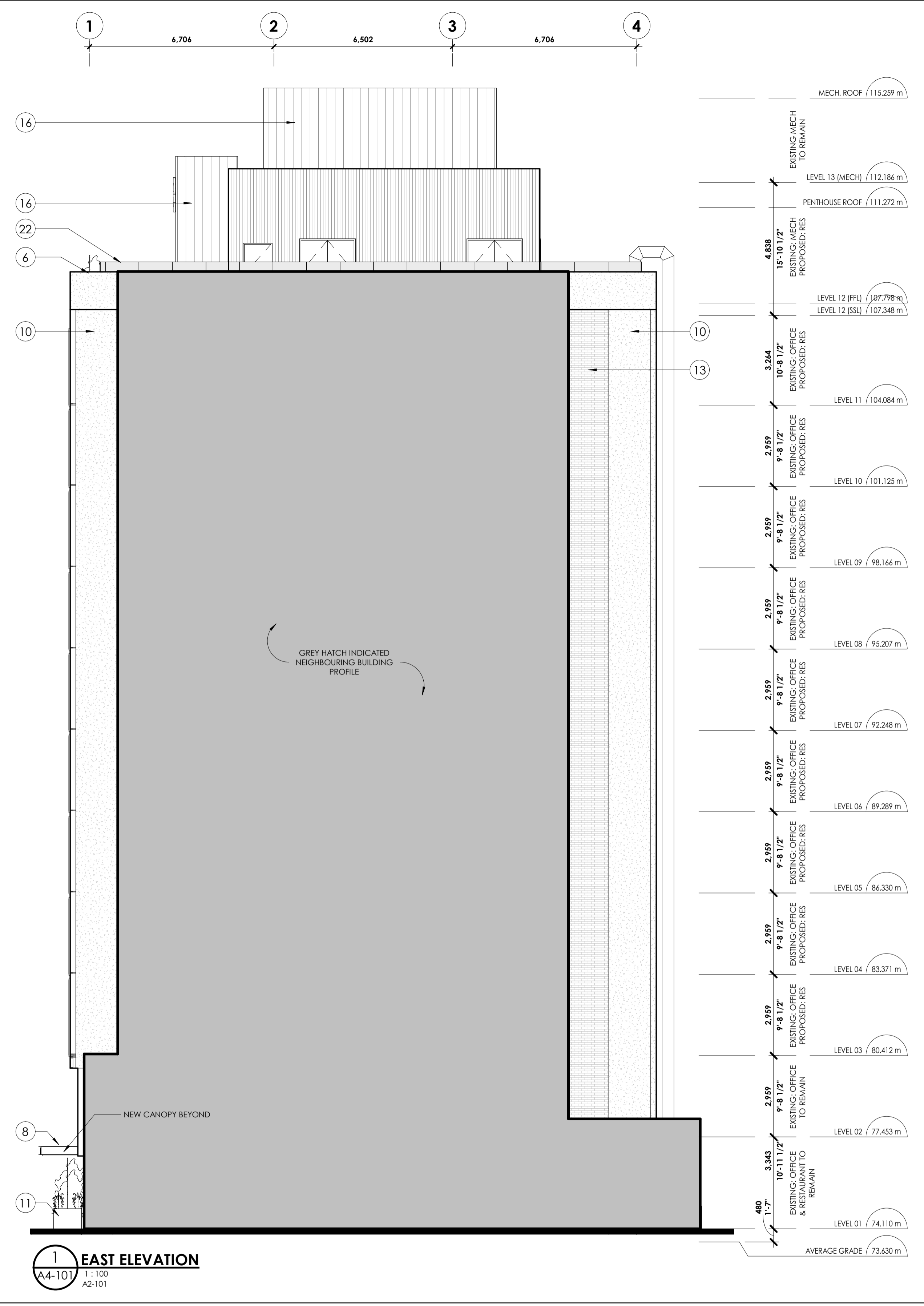
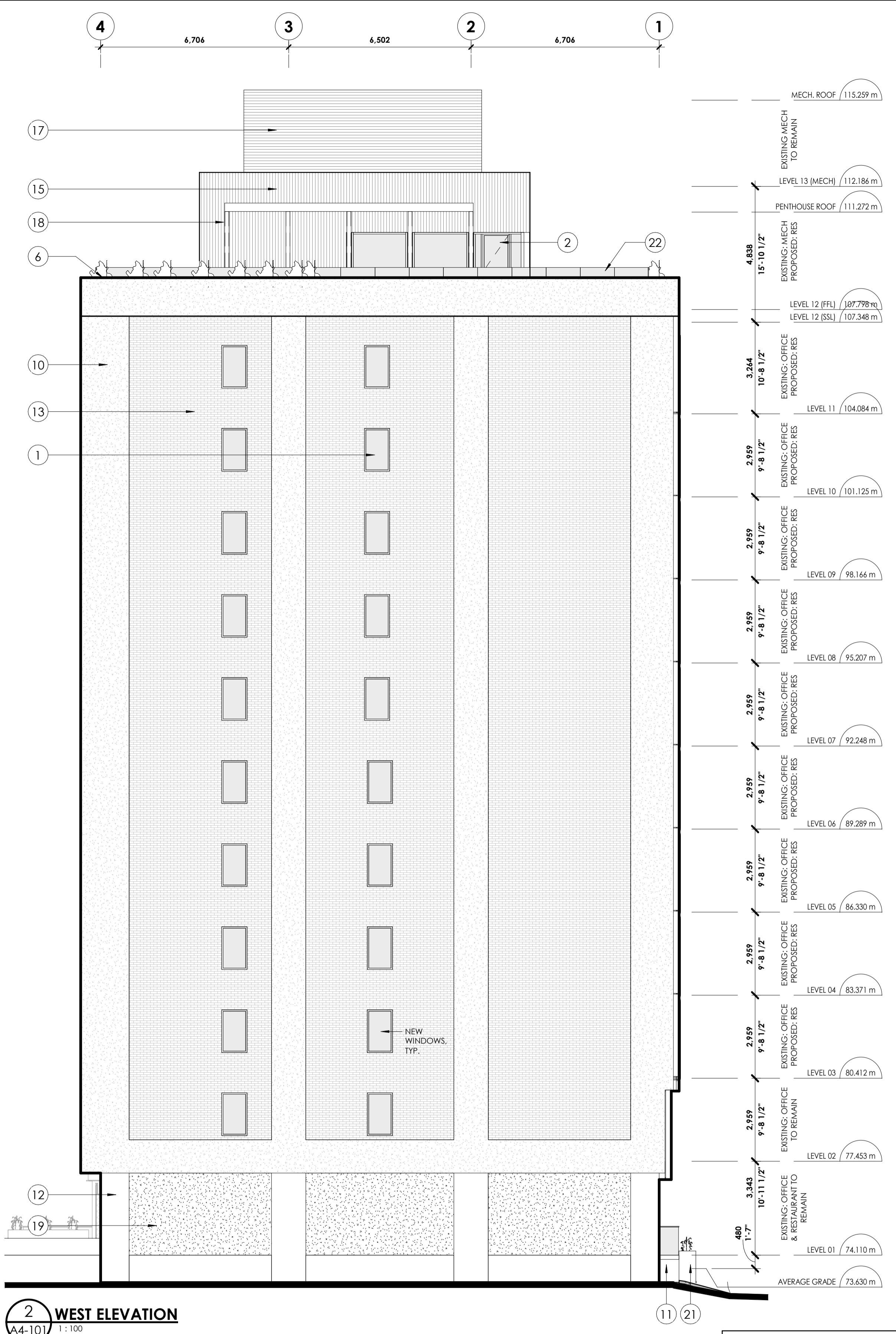
project title
473 ALBERT
 PROPOSED MIXED-USE RENOVATION

473 ALBERT STREET | OTTAWA | ONTARIO | CANADA
 drawing title | titre du dessin

EAST & WEST ELEVATION

project number | numéro du projet **159**
 drawn | dessiné **CK / LI / MP / JH**
 checked | vérifié **JM / AR**
 date | date **03/23/20**
 scale | échelle **1 : 100**
 0 m 2 m 4 m

drawing number | numéro du dessin
A4-101



MATERIAL LEGEND					
TAG	DESCRIPTION	TAG	DESCRIPTION	TAG	DESCRIPTION
1	CLEAR GLASS (WINDOW) REFER TO WINDOW SCHEDULE. BRONZE COLOUR FRAMED, DOUBLE GLAZED. LOW E COATING AS PER MANUFACTURER'S SPECIFICATIONS	5	BRONZE COLOUR PROFILED CLADDING	9	EXISTING RIB PROFILED PRECAST PANEL
2	CLEAR GLASS (WINDOW) REFER TO WINDOW SCHEDULE. BRONZE COLOUR FRAMED, DOUBLE GLAZED. DIVIDED BY WOOD CLAD FINS. LOW E COATING AS PER MANUFACTURER'S SPECIFICATIONS	6	BRONZE COLOURED PROFILED METAL CAPPING AND FLASHING PARAPET	10	EXISTING PARGING ON CIP CONCRETE STRUCTURE
3	CLEAR GLASS (FRAMELESS GLAZING) BRONZE COLOUR FRAMED GLAZING. DOUBLE GLAZED. LOW E COATING AS PER MANUFACTURER'S SPECIFICATIONS	7	BLACK METAL SIGNAGE ON STAND-OFFS OR SIMILAR	11	AGGREGATED CONCRETE FINISH TO WALL BASE
4	EXTERIOR GLASS JULIET GUARD RECTANGULAR PROFILE. BRONZE COLOUR HANDRAIL AND CAPPING	8	WEATHERING STEEL EXTRUSION TO FORM BASE OF L3 PANELS & BASE OF L2 AT UNDERGROUND PARKING	12	EXPOSED CONCRETE
				13	EXISTING CLAY BRICK MASONRY
				14	EXTERIOR TREATED WOOD SOFFIT
				15	ZINC CLADDING, RIBBED
				16	ZINC CLADDING, STANDING SEAM
				17	METAL ACOUSTIC SCREEN WITH GREY FINISH
				18	BLACK METAL TRELIS
				19	SMOOTH CONCRETE
				20	BRONZE COLOUR SOLID PANEL, WITH VENT PANEL TO MATCH
				21	WEATHERED STEEL PLANTER BOX ON TOP OF AGGREGATED CONCRETE BASE
				22	GLAZED BALLUSTRADE SET BEHIND PLANTING AND EXISTING PARAPET. GREY METAL TOP RAIL AND FRAME

Douglas James
DOUGLAS JAMES, MCIP, RPP
 MANAGER, DEVELOPMENT REVIEW - CENTRAL PLANNING, INFRASTRUCTURE & ECONOMIC DEVELOPMENT DEPARTMENT, CITY OF OTTAWA

APPROVED
 By Douglas James at 1:47 pm, Jul 14, 2021