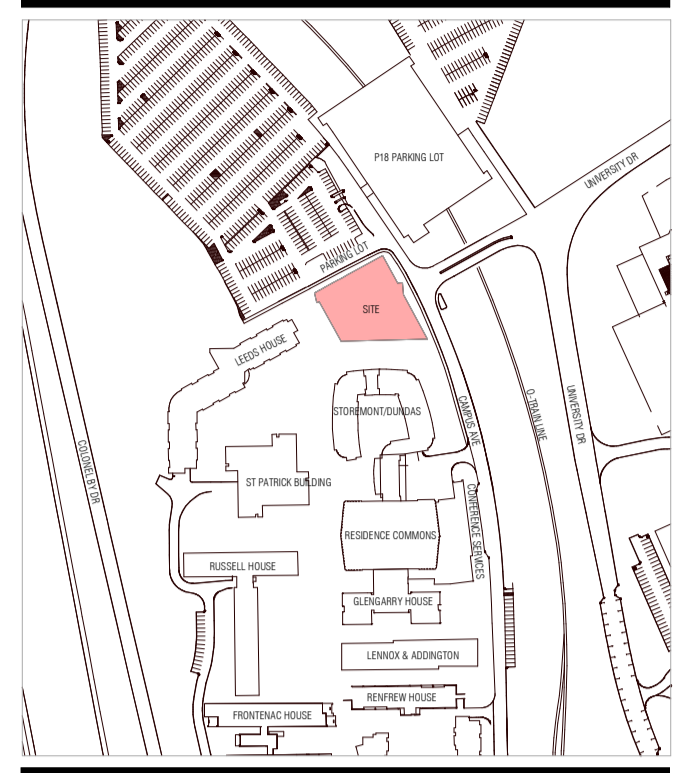


CONTRACTOR MUST CHECK & VERIFY ALL DIMENSIONS ON THE JOB.
 DO NOT SCALE DRAWINGS.
 ALL DRAWINGS, SPECIFICATIONS AND RELATED DOCUMENTS ARE THE COPYRIGHT PROPERTY OF THE ARCHITECT AND MUST BE RETURNED UPON REQUEST. REPRODUCTION OF DRAWINGS, SPECIFICATIONS AND RELATED DOCUMENTS IN PART OR IN WHOLE IS FORBIDDEN WITHOUT THE WRITTEN PERMISSION OF THE ARCHITECT.
 THIS DRAWING IS NOT TO BE USED FOR CONSTRUCTION UNLESS SIGNED BY THE ARCHITECT.



ISSUED		
No.	Date	Description
1	12/13/19	SITE PLAN CONTROL APPLICATION

NOTES:
 REFER TO LANDSCAPE DRAWINGS
 REFER TO CIVIL DRAWINGS

SITE PLAN LEGEND

- ◀ MAIN ENTRANCE
- ◀ SECONDARY ENTRANCE
- ◀ EXIT STAIR

Diamond Schmitt Architects 384 Adelaide Street West
 Suite 100
 Toronto, Ontario
 M5V 1R7 Canada
 Tel: 416 862 8800
 Fax: 416 862 5508
 info@dsai.ca
 www.dsai.ca

KWC Architects Inc. 383 Parkdale Avenue
 Suite 201
 Ottawa, Ontario
 K1Y 4K4 Canada
 Tel: 613 238 2117
 Fax: 613 238 6595
 kw@kwc-arch.com
 www.kwc-arch.com



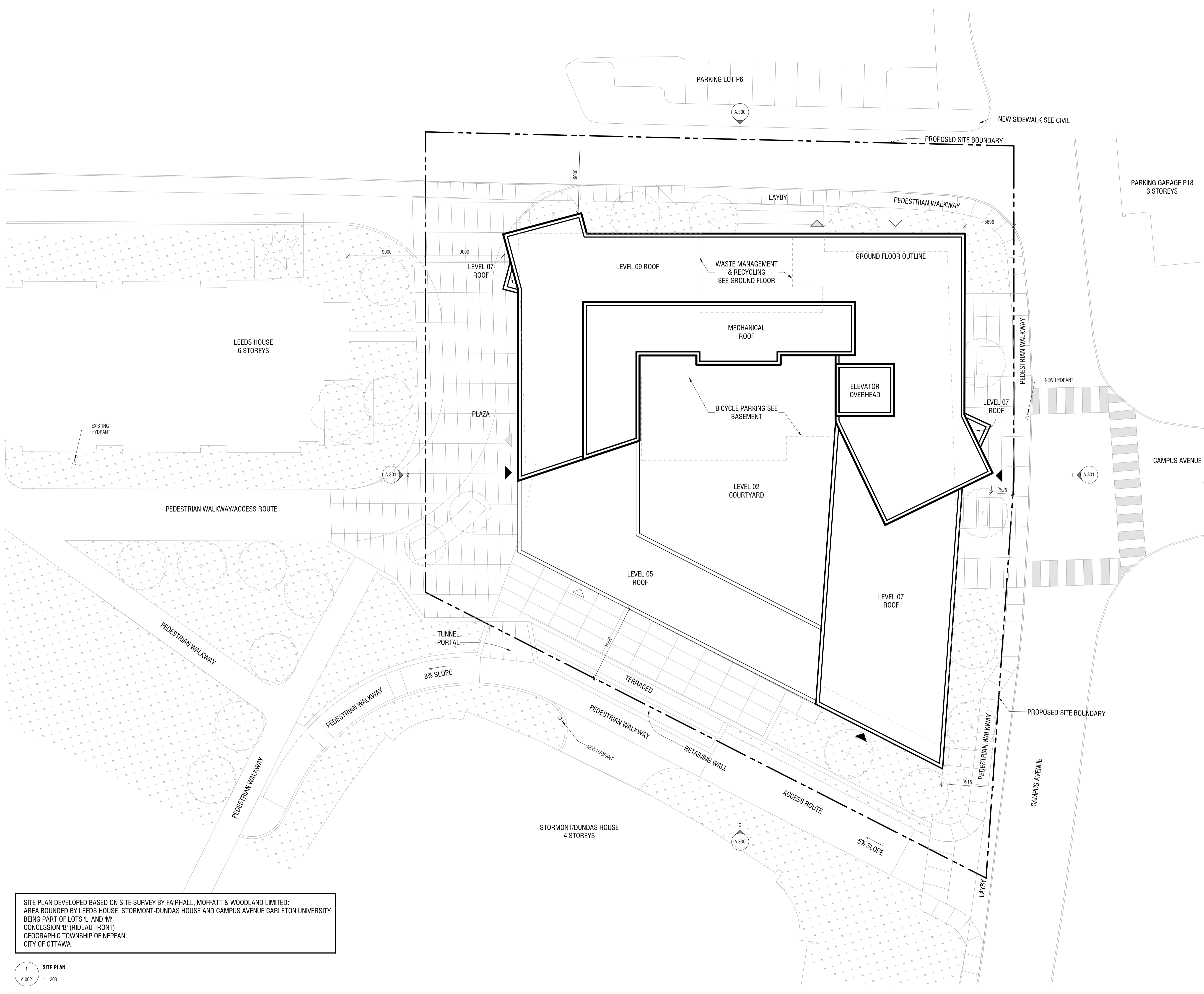
CARLETON UNIVERSITY NEW STUDENT RESIDENCE

CARLETON UNIVERSITY
 1125 COLONEL BY DRIVE
 OTTAWA ON
 K1S 5B6

SITE PLAN/ROOF PLAN

Scale: As indicated
 Project No: 1952
 Date: 12/13/19

A.002



SITE PLAN DEVELOPED BASED ON SITE SURVEY BY FAIRHALL, MOFFATT & WOODLAND LIMITED:
 AREA BOUNDED BY LEEDS HOUSE, STORMONT-DUNDAS HOUSE AND CAMPUS AVENUE CARLETON UNIVERSITY
 BEING PART OF LOTS 'L' AND 'M'
 CONCESSION 'B' (RIDEAU FRONT)
 GEOGRAPHIC TOWNSHIP OF NEPEAN
 CITY OF OTTAWA

1 SITE PLAN
 A.002 1:200

C:\Users\jmidan\Documents\Revit Files\1952_Carleton Student Residence_Building_admin\ad.ctb

2019-12-12 8:24:03 PM