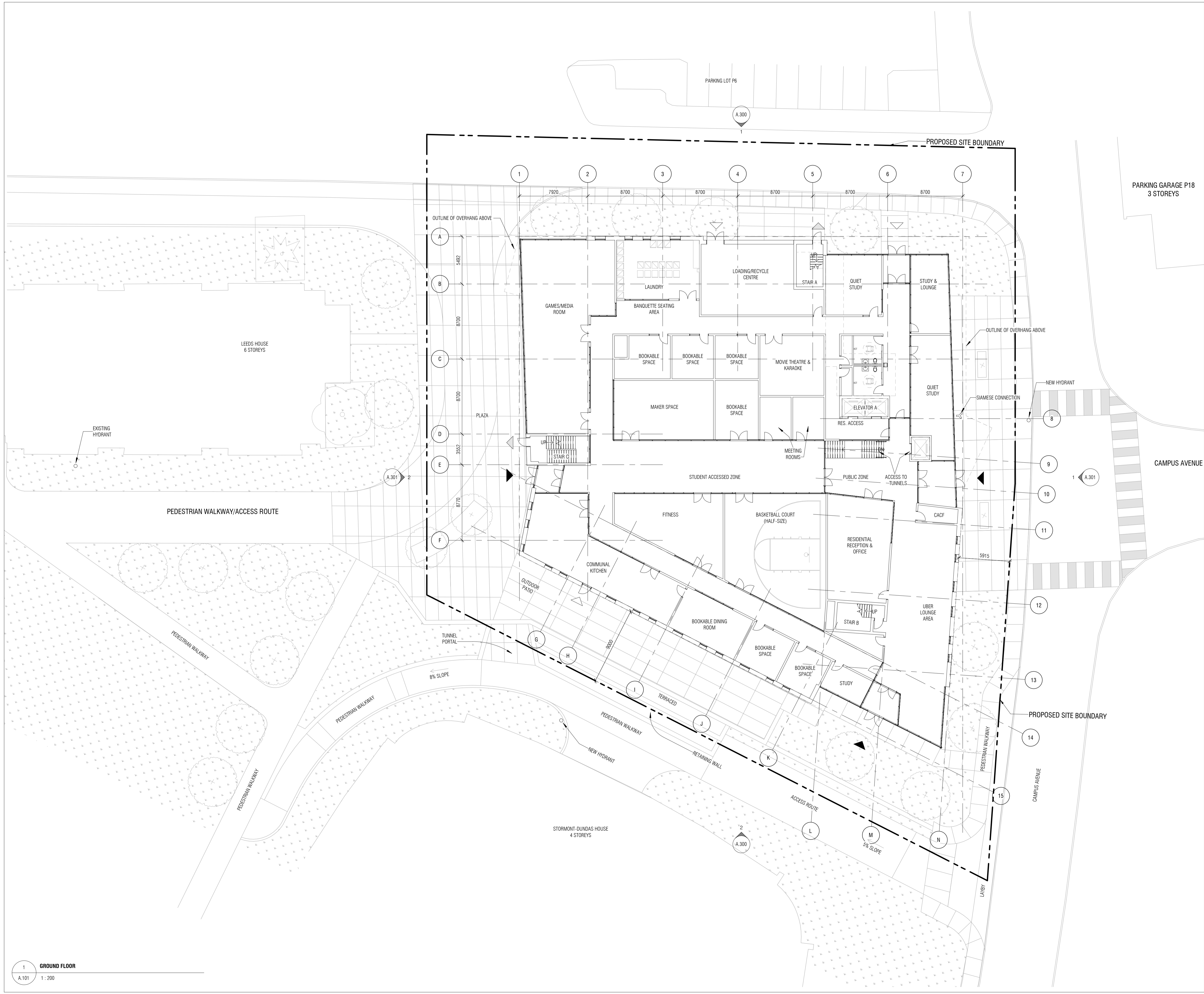


CONTRACTOR MUST CHECK & VERIFY ALL DIMENSIONS ON THE JOB.  
 DO NOT SCALE DRAWINGS.  
 ALL DRAWINGS, SPECIFICATIONS AND RELATED DOCUMENTS ARE THE COPYRIGHT PROPERTY OF THE ARCHITECT AND MUST BE RETURNED UPON REQUEST. REPRODUCTION OF DRAWINGS, SPECIFICATIONS AND RELATED DOCUMENTS IN PART OR IN WHOLE IS FORBIDDEN WITHOUT THE WRITTEN PERMISSION OF THE ARCHITECT.  
 THIS DRAWING IS NOT TO BE USED FOR CONSTRUCTION UNLESS SIGNED BY THE ARCHITECT.



ISSUED		
No.	Date	Description
1	12/13/19	SITE PLAN CONTROL APPLICATION

NOTES:  
 REFER TO LANDSCAPE DRAWINGS  
 REFER TO CIVIL DRAWINGS

**SITE PLAN LEGEND**

- ◀ MAIN ENTRANCE
- ◀ SECONDARY ENTRANCE
- ◀ EXIT STAIR

**Diamond Schmitt Architects** 384 Adelaide Street West, Suite 100, Toronto, Ontario M5V 1R7, Canada  
 Tel: 416 862 8800, Fax: 416 862 5508, info@dsai.ca, www.dsai.ca

**KWC Architects Inc.** 383 Parkdale Avenue, Suite 201, Ottawa, Ontario K1Y 4B4, Canada  
 Tel: 613 238 2117, Fax: 613 238 6595, kw@kwc-arch.com, www.kwc-arch.com



**CARLETON UNIVERSITY NEW STUDENT RESIDENCE**

CARLETON UNIVERSITY  
 1125 COLONEL BY DRIVE  
 OTTAWA, ON  
 K1S 5B6

**GROUND FLOOR**

Scale: As indicated  
 Project No: 1952  
 Date: 12/13/19

**A.101**