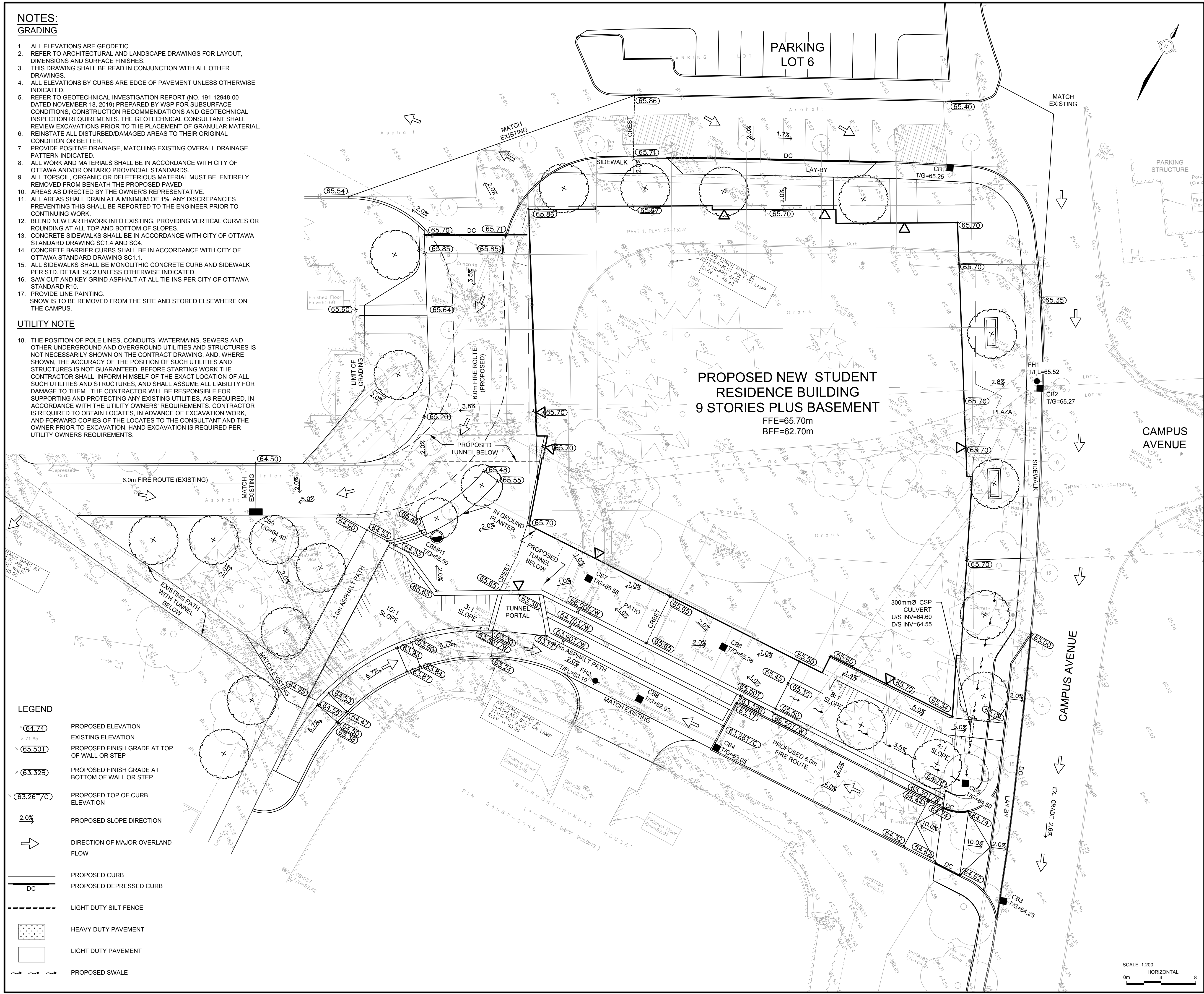


**NOTES:**  
**GRADING**

- ALL ELEVATIONS ARE GEODETIC.
- REFER TO ARCHITECTURAL AND LANDSCAPE DRAWINGS FOR LAYOUT, DIMENSIONS AND SURFACE FINISHES.
- THIS DRAWING SHALL BE READ IN CONJUNCTION WITH ALL OTHER DRAWINGS.
- ALL ELEVATIONS BY CURBS ARE EDGE OF PAVEMENT UNLESS OTHERWISE INDICATED.
- REFER TO GEOTECHNICAL INVESTIGATION REPORT (NO. 191-12948-00 DATED NOVEMBER 18, 2019) PREPARED BY WSP FOR SUBSURFACE CONDITIONS, CONSTRUCTION RECOMMENDATIONS AND GEOTECHNICAL INSPECTION REQUIREMENTS. THE GEOTECHNICAL CONSULTANT SHALL REVIEW EXCAVATIONS PRIOR TO THE PLACEMENT OF GRANULAR MATERIAL. REINSTATE ALL DISTURBED/DAMAGED AREAS TO THEIR ORIGINAL CONDITION OR BETTER.
- PROVIDE POSITIVE DRAINAGE, MATCHING EXISTING OVERALL DRAINAGE PATTERN INDICATED.
- ALL WORK AND MATERIALS SHALL BE IN ACCORDANCE WITH CITY OF OTTAWA AND/OR ONTARIO PROVINCIAL STANDARDS.
- ALL TOPSOIL, ORGANIC OR DELETERIOUS MATERIAL MUST BE ENTIRELY REMOVED FROM BENEATH THE PROPOSED PAVED AREAS.
- AREAS AS DIRECTED BY THE OWNER'S REPRESENTATIVE.
- ALL AREAS SHALL DRAIN AT A MINIMUM OF 1%. ANY DISCREPANCIES PREVENTING THIS SHALL BE REPORTED TO THE ENGINEER PRIOR TO CONTINUING WORK.
- BLEND NEW EARTHWORK INTO EXISTING, PROVIDING VERTICAL CURVES OR ROUNDING AT ALL TOP AND BOTTOM OF SLOPES.
- CONCRETE SIDEWALKS SHALL BE IN ACCORDANCE WITH CITY OF OTTAWA STANDARD DRAWING SC1.4 AND SC4.
- CONCRETE BARRIER CURBS SHALL BE IN ACCORDANCE WITH CITY OF OTTAWA STANDARD DRAWING SC1.1.
- ALL SIDEWALKS SHALL BE MONOLITHIC CONCRETE CURB AND SIDEWALK PER STD. DETAIL SC 2 UNLESS OTHERWISE INDICATED.
- SAW CUT AND KEY GRIND ASPHALT AT ALL TIE-INS PER CITY OF OTTAWA STANDARD R10.
- PROVIDE LINE PAINTING. SNOW IS TO BE REMOVED FROM THE SITE AND STORED ELSEWHERE ON THE CAMPUS.

**UTILITY NOTE**

- THE POSITION OF POLE LINES, CONDUITS, WATERMANS, SEWERS AND OTHER UNDERGROUND AND OVERGROUND UTILITIES AND STRUCTURES IS NOT NECESSARILY SHOWN ON THE CONTRACT DRAWING, AND, WHERE SHOWN, THE ACCURACY OF THE POSITION OF SUCH UTILITIES AND STRUCTURES IS NOT GUARANTEED. BEFORE STARTING WORK THE CONTRACTOR SHALL INFORM HIMSELF OF THE EXACT LOCATION OF ALL SUCH UTILITIES AND STRUCTURES, AND SHALL ASSUME ALL LIABILITY FOR DAMAGE TO THEM. THE CONTRACTOR WILL BE RESPONSIBLE FOR SUPPORTING AND PROTECTING ANY EXISTING UTILITIES, AS REQUIRED, IN ACCORDANCE WITH THE UTILITY OWNERS' REQUIREMENTS. CONTRACTOR IS REQUIRED TO OBTAIN LOCATES, IN ADVANCE OF EXCAVATION WORK, AND FORWARD COPIES OF THE LOCATES TO THE CONSULTANT AND THE OWNER PRIOR TO EXCAVATION. HAND EXCAVATION IS REQUIRED PER UTILITY OWNERS REQUIREMENTS.

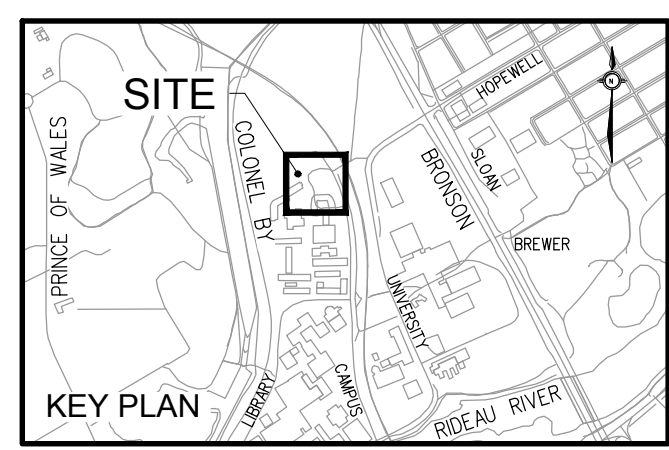


- LEGEND**
- ⊗ (64.74) PROPOSED ELEVATION
  - ⊗ 71.65 EXISTING ELEVATION
  - ⊗ (65.50) PROPOSED FINISH GRADE AT TOP OF WALL OR STEP
  - ⊗ (63.32B) PROPOSED FINISH GRADE AT BOTTOM OF WALL OR STEP
  - ⊗ (63.26) / C PROPOSED TOP OF CURB ELEVATION
  - 2.0% PROPOSED SLOPE DIRECTION
  - ➔ DIRECTION OF MAJOR OVERLAND FLOW
  - PROPOSED CURB
  - DC PROPOSED DEPRESSED CURB
  - - - LIGHT DUTY SILT FENCE
  - HEAVY DUTY PAVEMENT
  - LIGHT DUTY PAVEMENT
  - ~ ~ ~ PROPOSED SWALE

CONTRACTOR MUST CHECK & VERIFY ALL DIMENSIONS ON THE JOB.  
DO NOT SCALE DRAWINGS.

ALL DRAWINGS, SPECIFICATIONS AND RELATED DOCUMENTS ARE THE COPYRIGHT PROPERTY OF THE ARCHITECT AND MUST BE RETURNED UPON REQUEST. REPRODUCTION OF DRAWINGS, SPECIFICATIONS AND RELATED DOCUMENTS IN PART OR IN WHOLE IS FORBIDDEN WITHOUT THE WRITTEN PERMISSION OF THE ARCHITECT.

**MORRISON HERSHFIELD**  
200-2932 BASELINE ROAD, OTTAWA, ON K2H 1B1



**ISSUED**

No.	Date	Description
1	13/12/2019	ISSUED FOR SITE PLAN APPROVAL



**Diamond Schmitt Architects** 384 Adelaide Street West, Suite 100, Toronto, Ontario M5V 1R7, Canada  
Tel: 416.862.8800, Fax: 416.862.5508, info@dsai.ca, www.dsai.ca

**KWC Architects Inc.** 383 Parkdale Avenue, Suite 201, Ottawa, Ontario K1Y 4K4, Canada  
Tel: 613.238.2117, Fax: 613.238.6595, kw@kwc-arch.com, www.kwc-arch.com

**CARLETON UNIVERSITY NEW STUDENT RESIDENCE**

CARLETON UNIVERSITY  
1125 COLONEL BY DRIVE  
OTTAWA, ONTARIO  
K1S 5S6

**GRADING PLAN**

Scale: 1:200  
Project No: 1952  
Date: 12/13/19

**C003**

