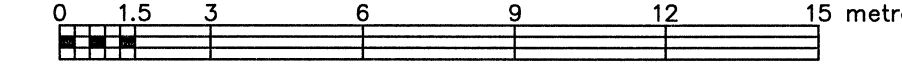


PART OF LOT 40  
CONCESSION A (OTTAWA FRONT)  
GEOGRAPHIC TOWNSHIP OF NEPEAN  
CITY OF OTTAWA

FARLEY, SMITH & DENIS SURVEYING LTD. 2019  
Scale 1: 150



Metric Note  
Distances and coordinates on this plan are in metres and can be converted to feet by dividing by 0.3048.

Distance Note  
Distances shown on this plan are ground distances and can be converted to grid distances by multiplying by the combined scale factor of 0.99994.

Bearing Note  
Bearings hereon are grid bearings derived from northerly limit of Slater Street shown to be N27°23'20"E on plan SR-10954 and are referred to the Central Meridian of MTM Zone 9 (76°30' West Longitude) Nad-83 (Original).

For bearing comparisons, a rotation of 11°08'40" counter-clockwise was applied to bearings on P4.

Elevation Notes

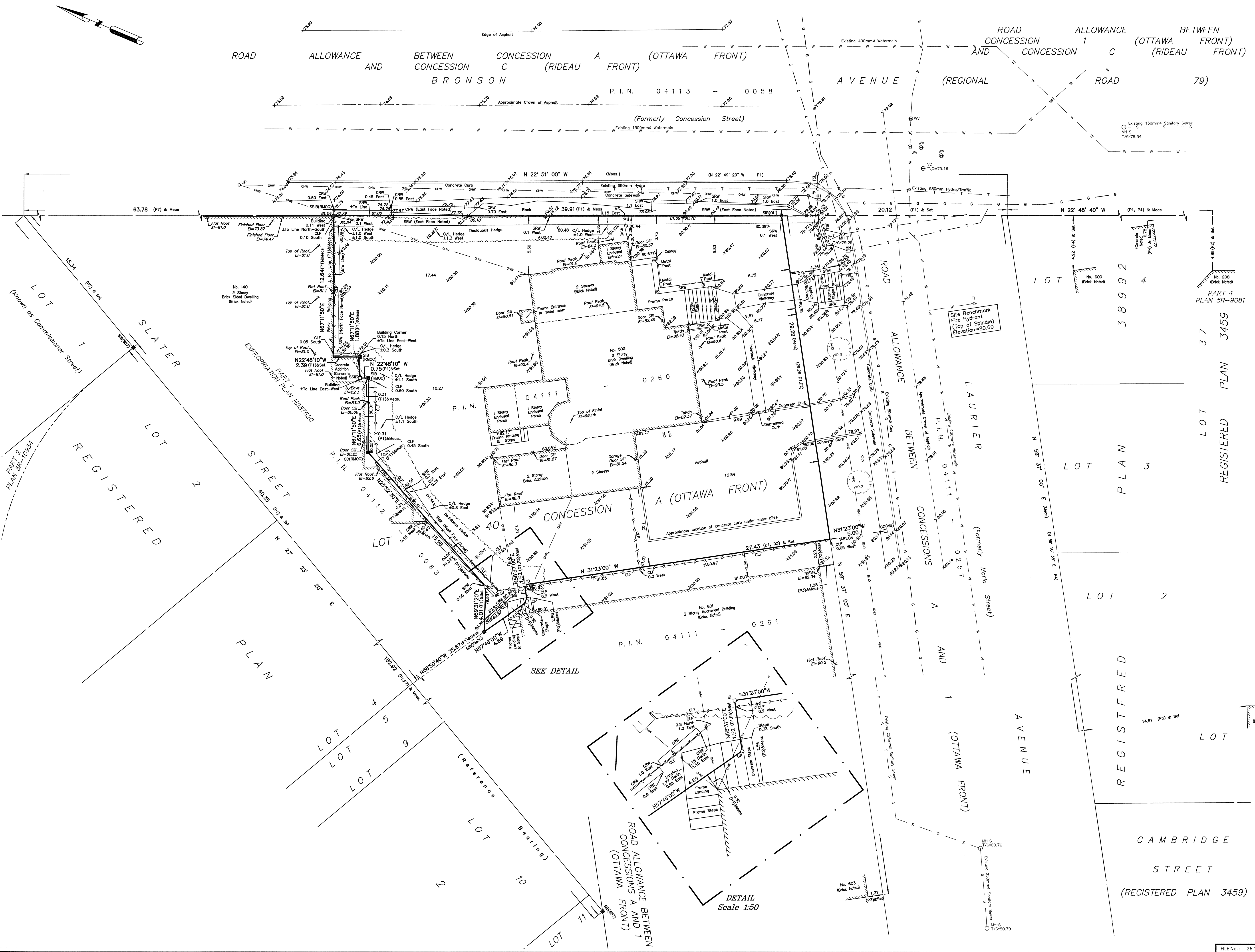
- Elevations shown are geodetic and are referred to Geodetic Datum CGVD-1928-1978.
- Elevations derived from OLRT Control Monument 20110156 having a published elevation of 69.838m.
- It is the responsibility of the user of this information to verify that the job benchmark has not been altered or disturbed and that its relative elevation and description agrees with the information shown on this drawing.

Utility Notes

- This drawing cannot be accepted as acknowledging all of the utilities and it will be the responsibility of the user to contact the respective utility authorities for confirmation.
- Only visible surface utilities were located.
- Underground utility data derived from City of Ottawa utility sheet reference: Sheet No. D-11-10, D-11-15 & 152938223
- Sanitary and storm sewer grades and inverts were derived from: Field measurement.
- A field location of underground plant by the pertinent utility authority is mandatory before any work involving breaking ground, probing, excavating etc.

Notes & Legend

—	Denotes Survey Monument Planted
—	Survey Monument Found
—	Standard Iron Bar
—	Short Standard Iron Bar
—	Measured
—	Origin Unknown
(P1)	Expropriation Plan N287620
(P2)	Plan SR-9081
(P3)	Plan by (857) dated February 29, 1980 (Ref. No. 25(a)-A(O)FNP)
(P4)	Plan by (1287) dated August 24, 2001 (Job No. 294-01)
(P5)	Plan by (671) dated April 29, 1983 (Ref. No. 01-38992-2)
(P6)	Registered Plan 38992
(P7)	Plan SR-10954
(D1)	Inst. CR259616
(D2)	Inst. CR231415
○ MH-S	Maintenance Hole (Sanitary)
○ MH-T	Maintenance Hole (Traffic)
○ MH-H	Maintenance Hole (Hydro)
○ VC	Valve Chamber (Watermain)
— S	Underground Sanitary Sewer
— W	Underground Water
— P	Underground Power
— G	Underground Gas
— U	Utility Pole
— CRW	Concrete Retaining Wall
— SRW	Stone Retaining Wall
— TRW	Timber Retaining Wall
— Inv.	Invert
— T/G	Top of Grate
— U/Eave	Underside of Eave
— T/Fdn	Top of Foundation
— C/L	Centreline
+ 65.00	Location of Elevations
+ 62.00	Top of Concrete Curb/Retaining Wall Elevation
○	Deciduous Tree
○ FH	Fire Hydrant
○ WV	Water Valve
○ TB-T	Traffic Terminal Box
○ TSP	Traffic Signal Post
○ TSL	Traffic Light
—	Gate
○	Diameter
—	Chain Link Fence
○ HH	Handhole



DETAIL  
Scale 1:50

ASSOCIATION OF ONTARIO  
LAND SURVEYORS  
PLAN SUBMISSION FORM  
2081190

THIS PLAN IS NOT VALID UNLESS  
IT IS AN EMBOSSED ORIGINAL COPY  
ISSUED BY THE SURVEYOR  
in accordance with  
Regulation 1026, Section 29 (3).

TOPOGRAPHIC DATA WAS COLLECTED UNDER WINTER CONDITIONS. SNOW COVER AND ICE PRECLUDE DETERMINING LOCATION AND ELEVATION OF SOME TOPOGRAPHICAL DATA THAT IS OTHERWISE VISIBLE.

WARNING: NO PERSON MAY COPY, REPRODUCE, DISTRIBUTE OR ALTER THIS PLAN IN WHOLE OR IN PART WITHOUT THE WRITTEN PERMISSION OF FARLEY, SMITH & DENIS SURVEYING LTD. © FARLEY, SMITH & DENIS SURVEYING LTD., 2019.

Surveyor's Certificate

- I certify that:
- This survey and plan are correct and in accordance with the Surveys Act, the Surveyors Act and the Regulations made under them.
  - The survey was completed on the 8th day of March, 2019.

March 21/19 Date  
Jamie Leslie  
Ontario Land Surveyor

FARLEY, SMITH & DENIS SURVEYING LTD.

ONTARIO LAND SURVEYORS  
CANADA LAND SURVEYORS  
190 COLONNADE ROAD, OTTAWA, ONTARIO K2E 7J5  
TEL. (613) 727-8226 FAX. (613) 727-1826