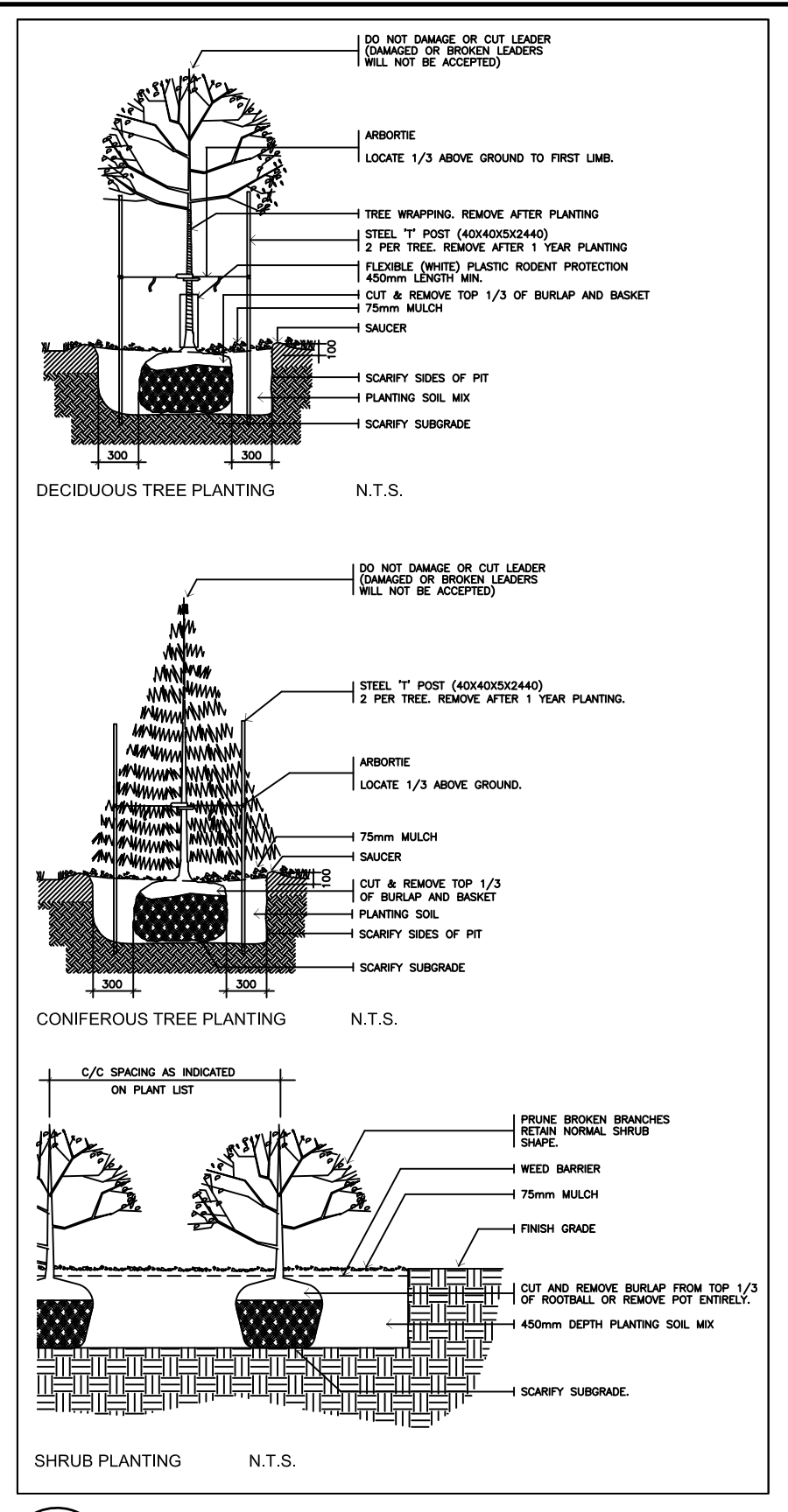


GENERAL NOTES

- This drawing shall be read in conjunction with all relevant Architectural, Engineering and related Drawings and Documents.
- Refer to Engineering Drawings for Grading and Servicing.
- Refer to Architectural Drawings for Site layout. Contractor shall provide the location(s) of all services/utilities by consulting Municipal Authorities and Utility companies and shall be responsible for adequate protection from damage during construction.
- Plant material shall be No. 1 Grade and shall comply with the Metric Guide Specifications For Nursery Stock (latest edition), published by the Canadian Nursery Trades Association.
- Plant Material locations are Schematic / Approximate only. Contractor shall stake out locations on site prior to work.
- Contractor shall guarantee all plant material for a period of one (1) full year from the date of final acceptance.
- Reinstate all areas damaged or disturbed beyond the limit of Work.
- Sod areas to receive 150mm topsoil. Sod shall be No. 1 quality conforming to the Canadian Nursery Sod rows Specification.
- Shrubs shall be planted in a continuous prepared bed of 450mm depth planting soil mix covered over with a woven polypropylene weed control fabric (LANDSCAPE FABRIC-Green-Line by Thraace-LINQ) and 75mm depth mulch, to finish grade, as specified.
- Perennials and Ornamental Grasses shall be planted in a continuous prepared bed of 450mm depth planting soil mix covered over with 75mm depth mulch, as specified, to finish grade. (NO WEED CONTROL FABRIC)
- Plant Material substitutions shall not be permitted without written approval from the Consultant.
- All materials and construction methods shall conform to City Standards and specification. Contractor shall set out construction lines with markers for reference and verification by Consultant.
- Based on results of Geotechnical Investigation by Paterson Group (July 30/19), the representative soils on subject site is considered as a low/medium sensitivity area for tree planting according to City of Ottawa Tree Planting in Sensitive Marine Clay Soils (2017 Guidelines). This Plan complies with the 'Guidelines' and Tree Planting Restrictions outlined in Section 6.7 Landscaping Considerations of the Report.
- THIS PLAN HAS BEEN PREPARED FOR MUNICIPAL SITE PLAN APPROVAL AND MAY NOT BE USE FOR ANY OTHER PURPOSE.**

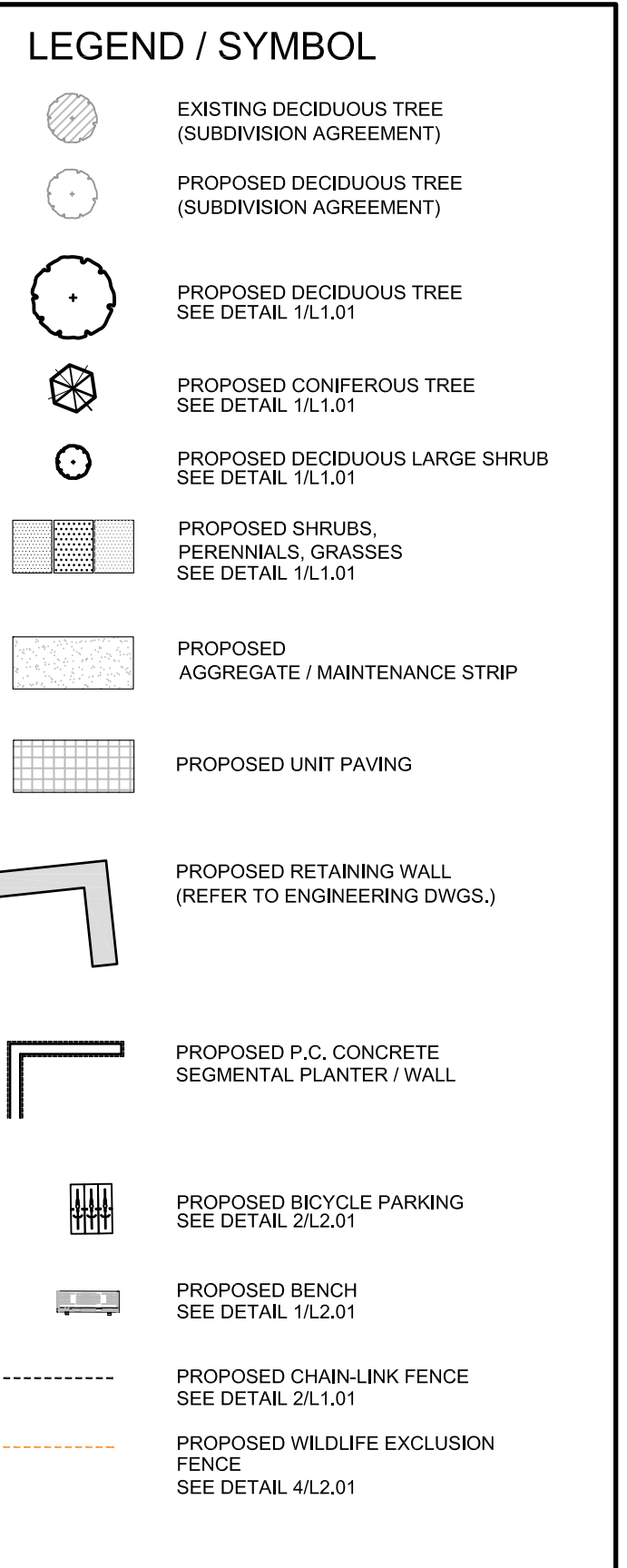


1 L1.01 PLANTING DETAILS (TYPICAL) NTS

PLANT MATERIAL SCHEDULE BLOCK 8

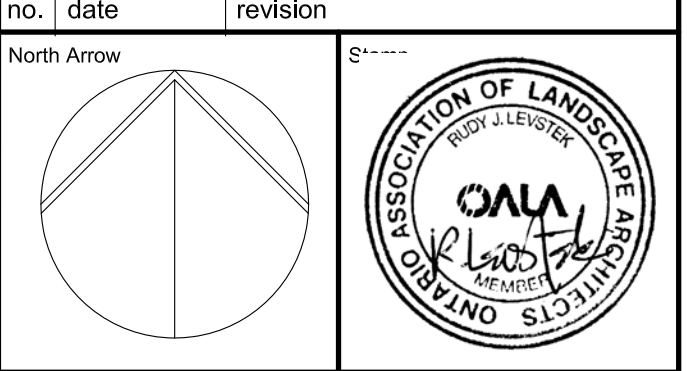
CODE	BOTANICAL NAME	COMMON NAME	QTY.	SIZE	REMARKS
DECIDUOUS TREES					
AC	AMELANCHIER CANADENSIS	SHADBLAW SERVICEBERRY	2	50mm cal	B&B, Single Stem
AR	ACER RUBRUM	RED MAPLE	2	50mm cal	B&B, single stem
AS	ACER SACCHARUM	SUGAR MAPLE	2	50mm cal	B&B, single stem
ASa	ACER SACCHARINUM	SILVER MAPLE	3	50mm cal	B&B, Single Stem
BA	BETULA ALLEGANIENSIS	YELLOW BIRCH	1	60mm cal	B&B, Single Stem
BP	BETULA Papyrifera	PAPER BIRCH	1	60mm cal	B&B, single stem
CO	CELTIS OCCIDENTALIS	COMMON HACKBERRY	1	50mm cal	B&B, single stem
QM	QUERCUS MACROCARPA	BUR OAK	1	50mm cal	B&B, single stem
QR	QUERCUS RUBRA	RED OAK	5	50mm cal	B&B, single stem
* VL1	VIBURNUM LENTAGO	NANNYBERRY	3	50mm cal	Tree form, B&B, single stem CITY TREES
CONIFEROUS TREES					
PG	PICEA GLAUCA	WHITE SPRUCE	11	200 cm ht	B&B
PR	PINUS RESINOSA	RED PINE	6	200 cm ht	B&B
PSI	PINUS STROBUS	WHITE PINE	4	200 cm ht	B&B
SHRUBS					
CAI	CORNUS ALTERNIFOLIA	PAGODA DOGWOOD	1	150cm ht.	B&B, multi-stem
CR	CORNUS RACEMOSA	GRAY DOGWOOD	64	50cm ht	potted, 100cm o/c
CS	CORNUS SERICEA	RED OSIER DOGWOOD	88	50cm ht	potted, 100cm o/c
DI	DIERVILLA LONICERA	BUSH HONEYBUCKLE	98	50cm ht	potted, 100cm o/c
HK	HYPERICUM KALMIANUM	KALM ST. JOHNSWORT	42	50cm ht	potted, 100cm o/c
PO	PHYSOCARPUS OPUULIFOLIUS	COMMON NINEBARK	98	50cm ht	potted, 100cm o/c
RB	ROSA BLANDA	SHRUB ROSE	86	50cm ht	potted, 100cm o/c
RhA	RHUS AROMATICA	FRAGRANT SUMAC	135	50cm ht	potted, 100cm o/c
RO	RUBUS ODORATUS	FLOWERING RASPBERRY	70	50cm ht	potted, 100cm o/c
SA	SYMPHORICARPUS ALBUS	SNOWBERRY	48	50cm ht	potted, 100cm o/c
SAI	SPIRAEA ALBA	SPIREA	68	50cm ht	potted, 100cm o/c
VC	VIBURNUM CASSINOIDES	WITHEROD	23	50cm ht	potted, 100cm o/c
VD	VIBURNUM DENTATUM	ARROWWOOD	114	50cm ht	potted, 100cm o/c
VL	VIBURNUM LENTAGO	NANNYBERRY	15	150cm ht	B&B, multi-stem
VT	VIBURNUM TRILOBUM	HIGHBUSH CRANBERRY	15	50cm ht	potted, 100cm o/c
PERENNIALS					
Ech	ECHINACEA purpurea	PURPLE CONEFLOWER	28	15 cm pot	plant 60cm o/c
Rud	RUDEBECKIA laciniata	CUTLEAF CONEFLOWER	50	15 cm pot	plant 60cm o/c
ORNAMENTAL GRASSES					
Des	DESCHAMPSIA caespitosa	TUFT HAIR GRASS	18	15cm pot	plant 75cm o/c
Pv	PANICUM virgatum	SWITCH GRASS	65	15cm pot	plant 75cm o/c
Sor	SORGHASTRUM nutans	INDIAN GRASS	19	15cm pot	plant 75cm o/c

* TREES PLANTED ON CITY PROPERTY shall have a two-year warranty period and shall be staked, and only if necessary, with one stake on the prevailing winds side of the tree.



FOR APPROVAL ONLY

no.	date	revision
5.	APR./7/22	PER CITY COMMENTS (3)
4b.	FEB./11/22	PER CITY COMMENTS (3)
4.	SEPT./29/21	RE-ISSUE FOR SITE PLAN APPROVAL
3.	APR./13/21	RE-ISSUE FOR SITE PLAN APPROVAL
2.	MAR./29/21	ISSUE FOR REVIEW
1.	DEC./18/19	ISSUE FOR SITE PLAN APPROVAL

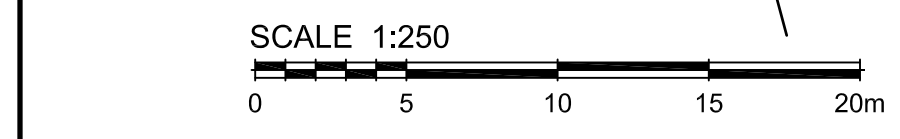


Contractor shall check and verify all dimensions on site and report all errors and/or omissions to the Consultant.
Work to be done in accordance with all applicable codes and by-laws.
Do not scale Drawing.

Copyright reserved. This Drawing is the exclusive property of the Landscape Architect and shall not be used without consent.

Consultant
LEVSTEK CONSULTANTS
 LANDSCAPE ARCHITECTS
 5871 Hugh Crescent • Ottawa, Ontario • K6A 2W6
 613 • 826 • 6518

Client
brigil
 Project
PETRIE'S LANDING II
 180 PRESTIGE CIRCLE
BLOCK 8
 Drawing Title
LANDSCAPE PLAN
 Drawn Date **JUNE 2019** Drawing No.
 Scale Project No. **1:250 828.04** **L1.01**



D07-12-19-0212

DWG. # 18062

