

NOTES GÉNÉRALES / General Notes

- Ces documents d'architecture sont la propriété exclusive de NEUF architecte et ne peuvent être utilisés, reproduits ou copiés sans autorisation écrite préalable. / These architectural documents are the exclusive property of NEUF architecte and cannot be used, copied or reproduced without written pre-authorization.
- Les dimensions apparaissant sur ces documents doivent être vérifiées par l'entrepreneur avant le début des travaux. / All dimensions which appear on the documents must be verified by the contractor before to start the work.
- Veuillez aviser l'architecte de toute dimension erreur et/ou divergence entre ces documents et ceux des autres professionnels. / The architect must be notified of all errors, omissions and discrepancies between these documents and those of the other professionals.
- Les dimensions sur ces documents doivent être lues et non mesurées. / The dimensions on these documents must be read and not measured.

GEOTECHNIQUE / Géotechnical
Paterson Group Inc.
 154 Colomède Road South Ottawa (Nepean), Ontario Canada K2E 7J5
 T 613 226-7381 www.patersongroup.ca

MÉCANIQUE ÉLECTRIQUE / Mechanical Electrical
LCA
 15, rue Du Valcourt, unité 6, Gatineau, Québec (QC) J8T 8H1
 T 819 24-8383 www.larouchecanada.ca

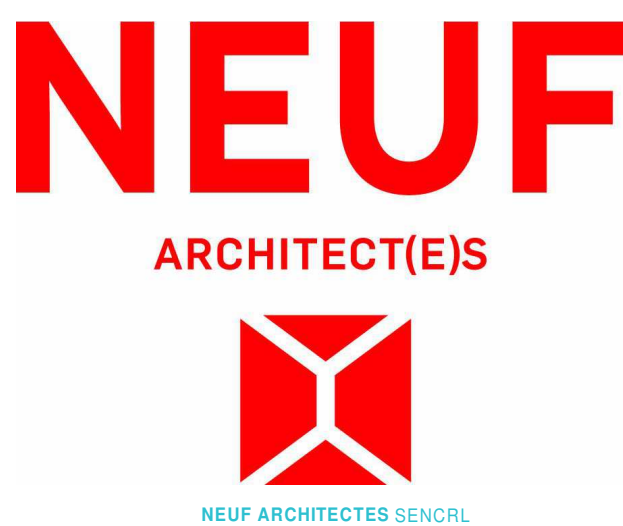
STRUCTURE / structure
qdi
 635, boulevard de la Gaspé, Gatineau (QC) J8T 8G1
 T 819 243-4474 qdi.ca

ARCHITECTURE DE PAYSAGE / Landscape Architect
Lestek Consultants
 5971 Hugh Crofton, Ottawa ON K0K 0V0
 T 613 825 0518 larouchelvestek.com

CIVIL / Civil
Stantec
 400 - 1331 Clyde Avenue, Ottawa ON K2C 3G4
 T 613 724-6337 krc.albor@stantec.com

ARCHITECTES / Architect
NEUF architect(e)s SENCAL
 630, St-Julien, Rues-Lavoie C. 52e étage, Montréal QC H3B 1S6
 T 514 847 1117 NEUFArchitectes.com

SCEAU / Seal



CLIENT / Client
brigi

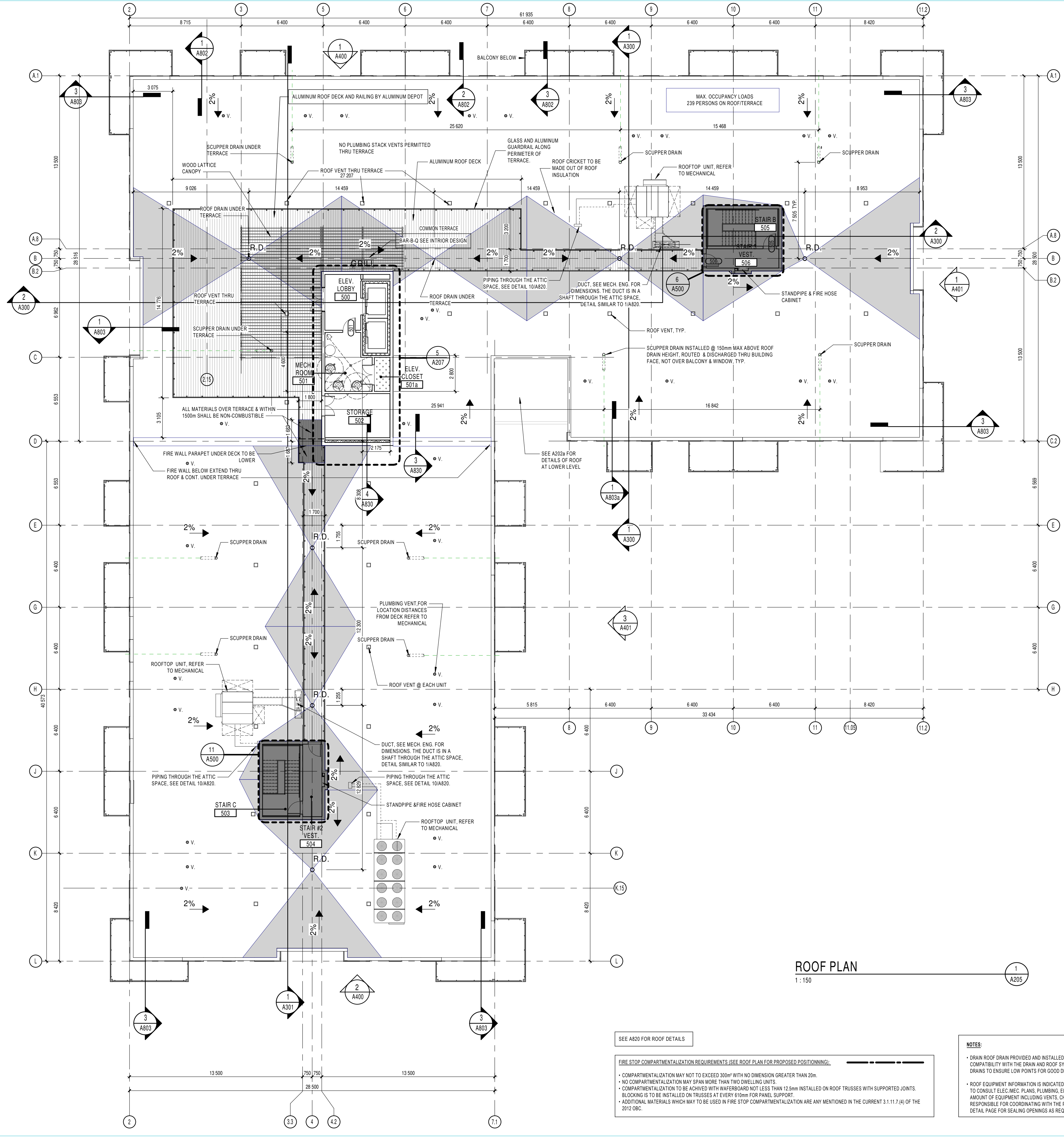
OUVRAGE / Project
PETRIES II BLOCK 8
 112 units
 ORLEANS, ON
 NO PROJET No. 10498.02

NO	RÉVISION	DATE (aa-mm-ii)
A	Issue for Coordination	2021-07-16
B	Issued for Coordination	2021-08-13
C	Issued for Permit (Cancelled)	2021-08-30
D	Issued for SPA	2021-09-23
E	Issued for Coordination	2021-09-24
F	Issued for Full Building Permit	2021-10-01
G	Issued for Coordination	2021-10-06
H	Issued for Tender	2021-10-15
I	Issued for Coordination	2022-02-11
J	Issued for Coordination	On Hold
K	Issued for SPA	2022-02-25

DESSINÉ PAR / Drawn by PM
VERIFIÉ PAR / Checked by Paul McQ.
 DATE (aa.mm.ii) 06/14/17
 ÉCHELLE / Scale As indicated
 TITRE DU DESSIN / Drawing Title

ROOF PLAN

REVISION / Revision **NO. DESSIN / Dwg Number**
K A205
 #18062



PLAN LEGEND

- EXIT - NO DRILLING OR OPENINGS FOR ANY EQUIPMENT ARE ALLOWED IN THE FRR PARTITIONS NOT SERVING THE EXIT
- FOR ELECTRICAL BOXES IN THE FRR PARTITIONS WHEN OUTLET BOX IS NOT SERVING THE EXIT, SEE DETAIL 9/A854
- CEILING SHAFT WALL, SEE NOTE ON PLANS

ROOF TRUSS NOTE
 SEE STRUCTURE FOR ROOF TRUSS HEIGHT

GENERAL NOTES

- NO DRILLING OR OPENINGS FOR ANY EQUIPMENT ARE ALLOWED IN THE FRR PARTITIONS AT THE EXITS.
- ALL OPENINGS FOR ELECTRICAL BOXES IN FRR PARTITION MUST BE OFFSET TO KEEP THE FRR WALLS INTEGRITY.
- BALCONIES: FOR ALL CORNER BALCONIES, CREATE SLOPE IN BOTH DIRECTION FACING AWAY FROM THE BUILDING.
- SEE INTERIOR DESIGN DRAWINGS FOR REFLECTIVE CEILING PLANS

NOTES:

- DRAIN ROOF DRAIN PROVIDED AND INSTALLED BY THE PLUMBER. COORDINATE WITH ROOFING CONTRACTOR FOR COMPATIBILITY WITH THE DRAIN AND ROOF SYSTEM. THE ROOFING CONTRACTOR IS RESPONSIBLE TO LOCATE THE ROOF DRAINS TO ENSURE LOW POINTS FOR GOOD DRAINAGE SLOPE.
- A SIGN WILL BE ADDED ON THE WALL OF THE ELEVATOR LOBBY STATING THE MAXIMUM OCCUPANT LOAD FOR THE ROOF IS 239 PEOPLE.
- ROOF EQUIPMENT INFORMATION IS INDICATED FOR REFERENCE PURPOSES ONLY. ALL CONTRACTORS ARE RESPONSIBLE TO CONSULT ELEC. MEC. PLUMBING, ELECTRICAL, STRUCTURE, FIRE PROTECTION, ETC. TO QUANTIFY EXACT AMOUNT OF EQUIPMENT INCLUDING VENTS, CHIMNEYS, FLUES, ETC. CONTRACTOR AND EACH SUB-CONTRACTOR IS RESPONSIBLE FOR COORDINATING WITH THE PROFESSIONALS INVOLVED BEFORE EXECUTION ON SITE PLAN. SEE ROOF DETAIL PAGE FOR SEALING OPENINGS AS REQUIRED.

SEE A820 FOR ROOF DETAILS

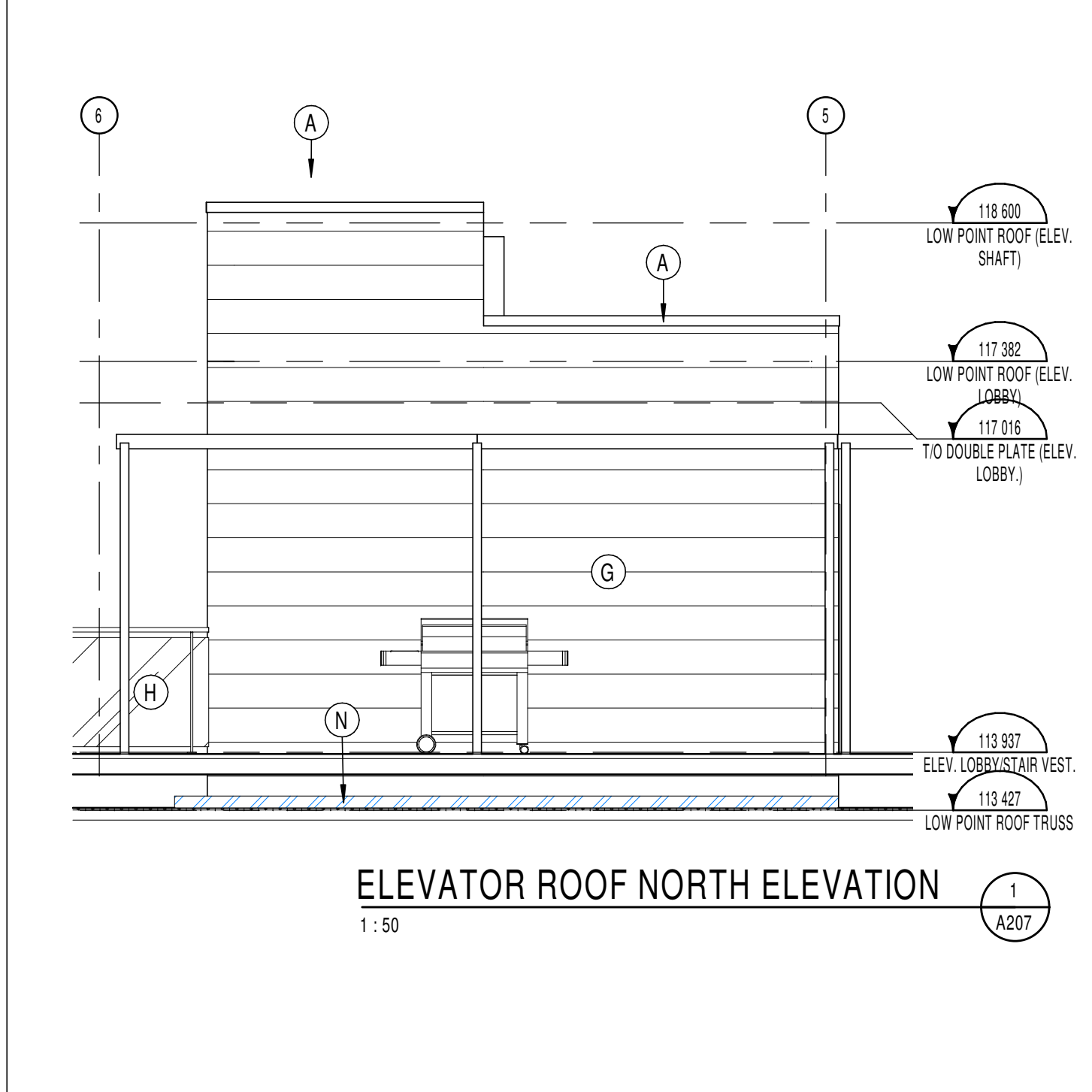
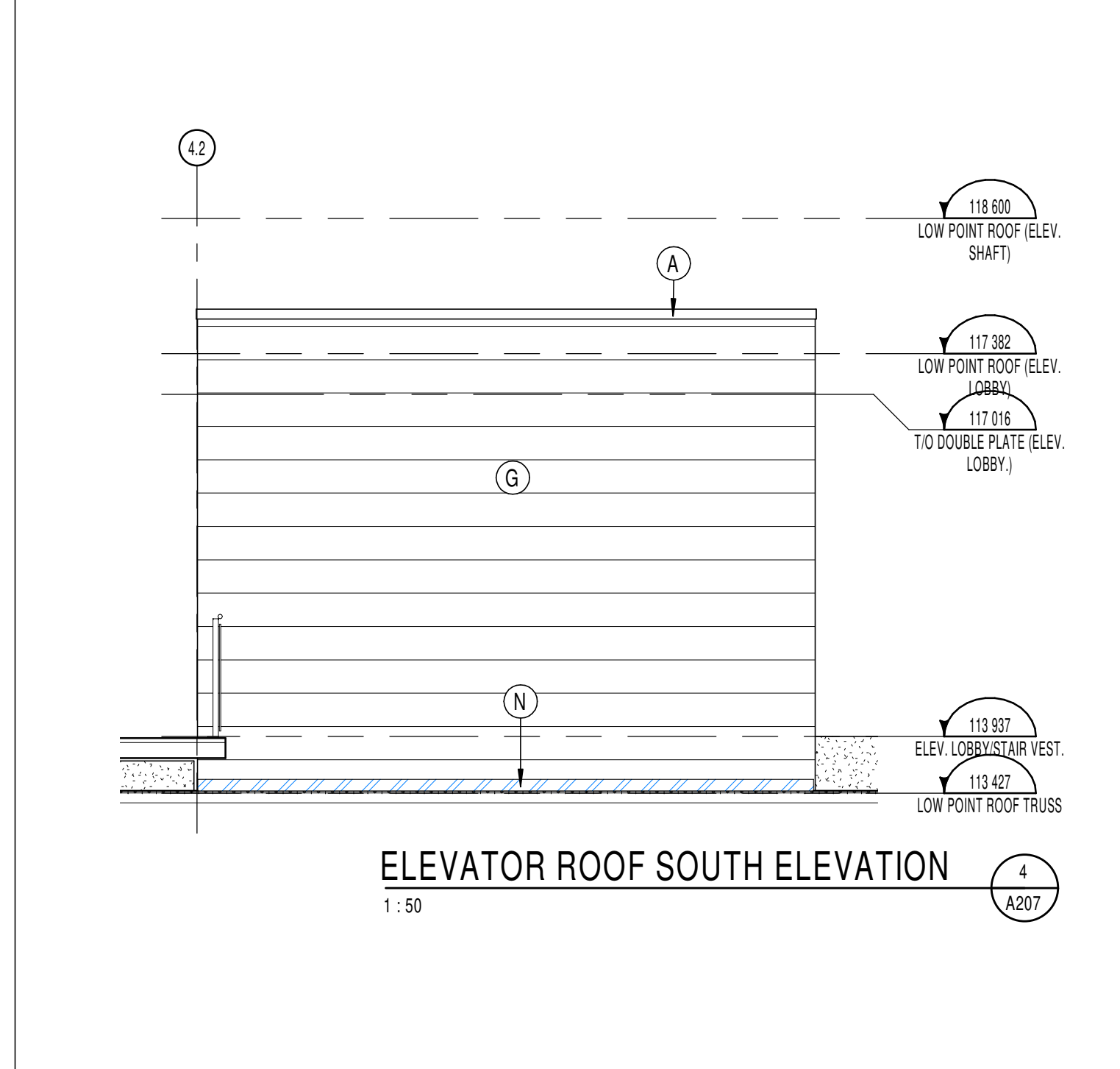
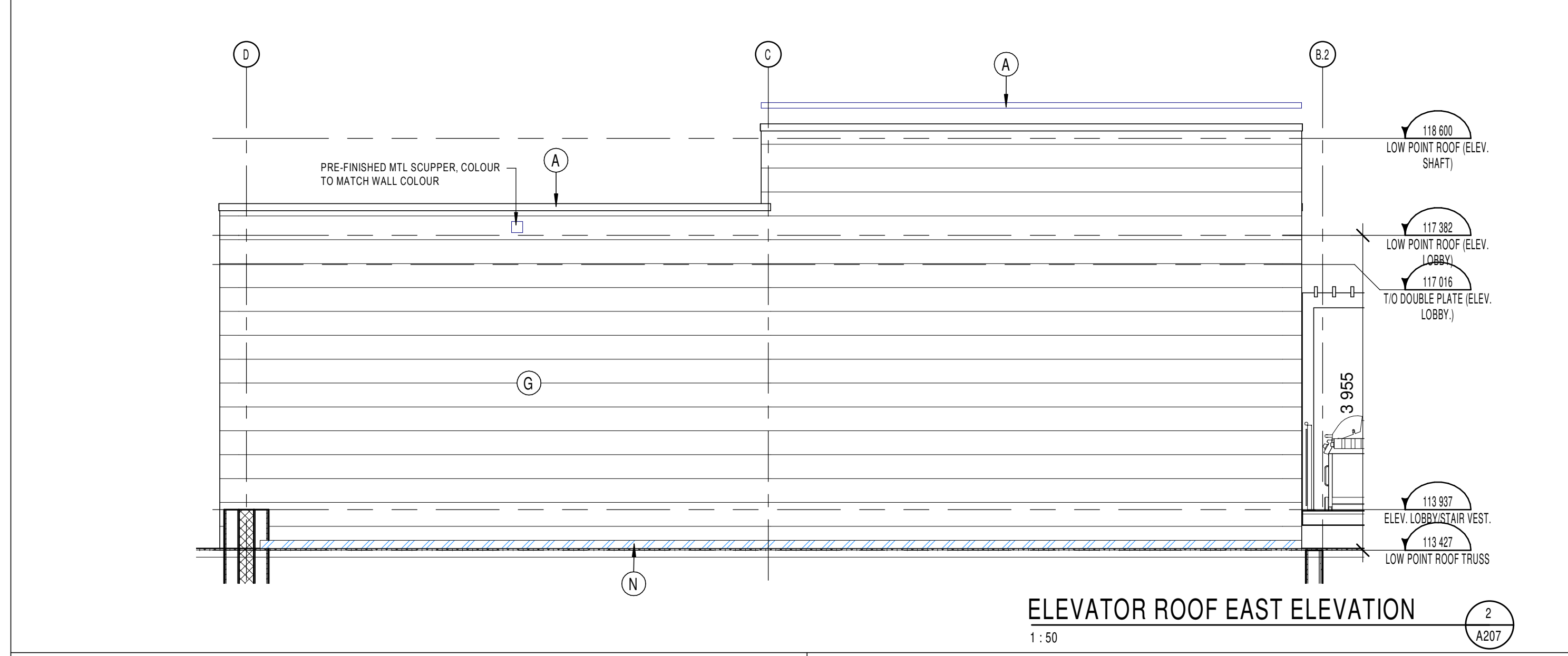
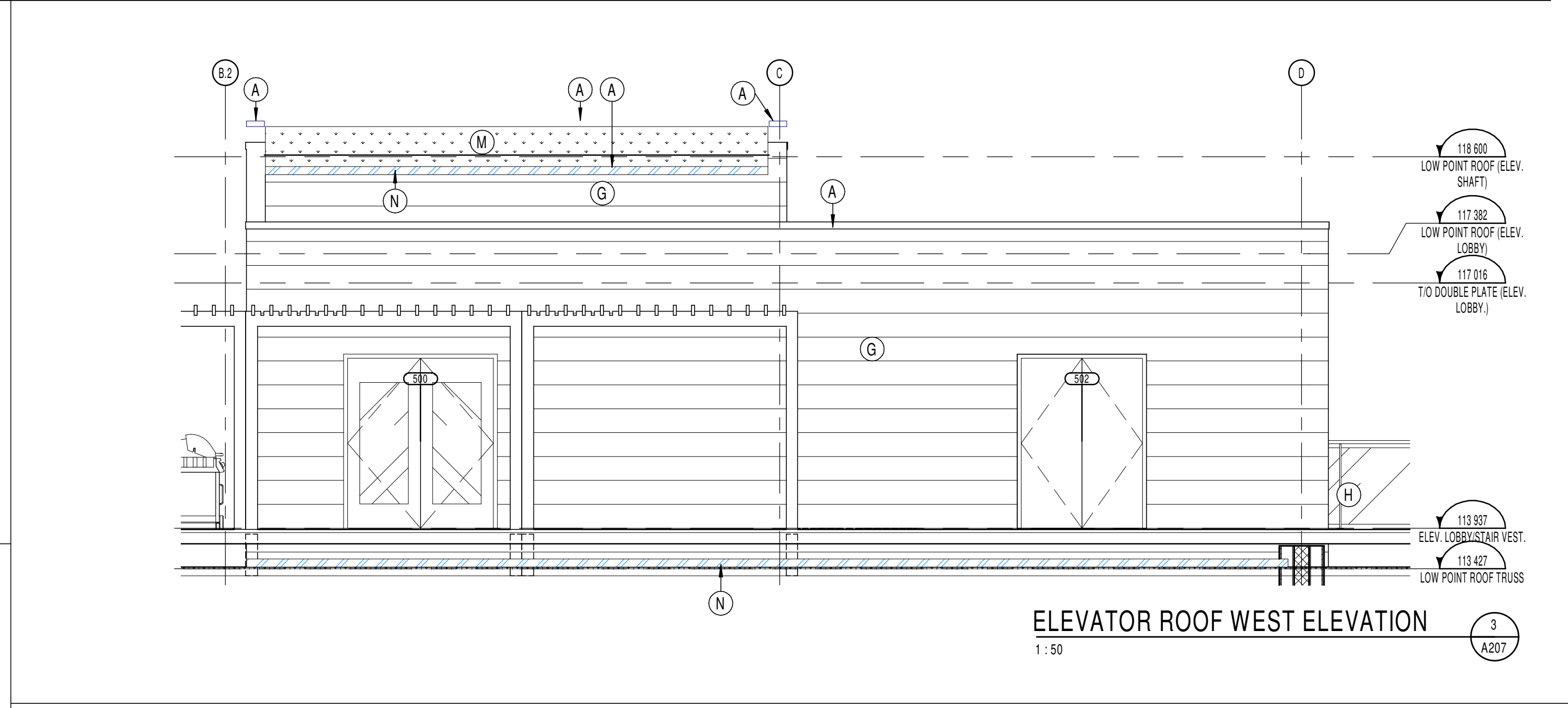
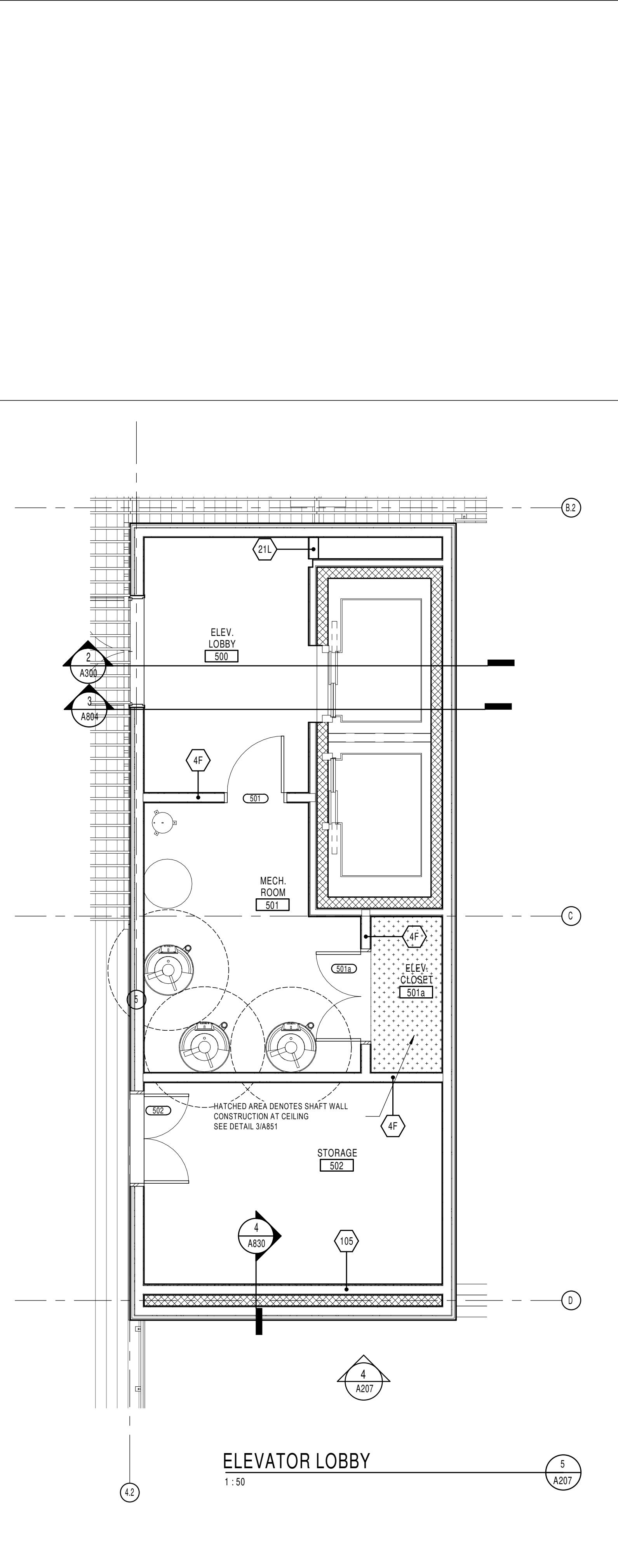
FIRE STOP COMPARTMENTALIZATION REQUIREMENTS (SEE ROOF PLAN FOR PROPOSED POSITIONING):

- COMPARTMENTALIZATION MAY NOT EXCEED 300m² WITH NO DIMENSION GREATER THAN 20m.
- NO COMPARTMENTALIZATION MAY SPAN MORE THAN TWO DRILLING UNITS.
- COMPARTMENTALIZATION TO BE ACHIEVED WITH WAFFERBOARD NOT LESS THAN 12.5mm INSTALLED ON ROOF TRUSSES WITH SUPPORTED JOINTS. BLOCKING IS TO BE INSTALLED ON TRUSSES AT EVERY 610mm FOR PANEL SUPPORT.
- ADDITIONAL MATERIALS WHICH MAY BE USED IN FIRE STOP COMPARTMENTALIZATION ARE ANY MENTIONED IN THE CURRENT 3.1.11.7.4) OF THE 2012 CBC.

C:\Fichiers Revit\Local\P2BL8_10498.02_ARC_INT_R20_pmqaqueen.rvt

Exterior finishes legend

A	PREFINISHED MTL PARAPET CAP, COLOUR TO MATCH EXTERIOR WALL COLOUR. PROVIDE MTL CLOSURE & FLASHING AROUND EACH DOOR & WINDOW OPENING. COLOUR TO MATCH WALL COLOUR.	B	JAMES WOOD FIBER CEMENT LAP COLOUR: LIGHT GREY	B2	NOT USED	C	BRAMPTON BRICK ARCHITECTURAL SERIES COLOUR: SILVER	D	BRAMPTON STONE FINESSE SERIES 150x250, STANDARD FINISH COLOUR: ICELAND WHITE	E	METALLIC, DISTINCTION PREPAINTED STEEL SIDING COLOUR: CEDAR.	F	PREPAINTED ALUMINUM BALCONY POST CLADDING AND FASCIA AT BALCONIES COLOUR: CHARCOAL	G	METALLIC, DISTINCTION PREPAINTED STEEL SIDING COLOUR: URBAN GREY	H	ALUMINIUM GUARDRAIL & POSTS W/ CLEAR GLASS INFILL PANELS, GUARDRAIL & POSTS COLOUR TO MATCH BALCONY POSTS. TYP. SEE SPECS FOR TYPE OF GLASS.	I	METALLIC, DISTINCTION PREPAINTED STEEL SIDING COLOUR: BONEWHITE	J	CONT. CONTROL JOINT ALONG MASONRY. SEE SPEC FOR MAX. SPACING. SEALER COLOUR: MATCH MASONRY.	K	WINDOW FRAME COLOUR: BLACK
L	REFINISHED METAL LOUVER FOR ATTIC VENTILATION, 150x1220mm, COLOUR TO MATCH WALL COLOUR, TYP. @ EACH UNIT	M	VERTICAL HARDIPANEL SIDING SMOOTH FINISH COLOUR: LIGHT GREY TO BE USED ON EXPOSED FOUNDATION WALL NEAR AND AROUND GARAGE DOOR																				



NOTES GÉNÉRALES / General Notes

- Ces documents d'architecture sont la propriété exclusive de NEUF architect(e)s et ne peuvent être utilisés, reproduits ou copiés sans autorisation écrite préalable. / These architectural documents are the exclusive property of NEUF architect(e)s and cannot be used, copied or reproduced without written pre-authorization.
- Les dimensions apparaissant sur ces documents doivent être vérifiées par l'entrepreneur avant le début des travaux. / All dimensions which appear on the documents must be verified by the contractor before to start the work.
- Veillez aviser l'architecte de toute dimension erreur et/ou divergence entre ces documents et ceux des autres professionnels. / The architect must be notified of all errors, omissions and discrepancies between these documents and those of the others professionals.
- Les dimensions sur ces documents doivent être lues et non mesurées. / The dimensions on these documents must be read and not measured.

GEOTECHNIQUE / Geotechnical
Paterson Group Inc.
154 Colomade Road South Ottawa (Nepair), Ontario Canada K2E 7J5
T 613 226-7381 www.patersongroup.ca

MÉCANIQUE ÉLECTRIQUE / Mechanical Electrical
LCA
15, rue De Valcourt, unité 6, Gatineau, Québec J8T 8H1
T 819 24-8383 www.larouchecanada.com

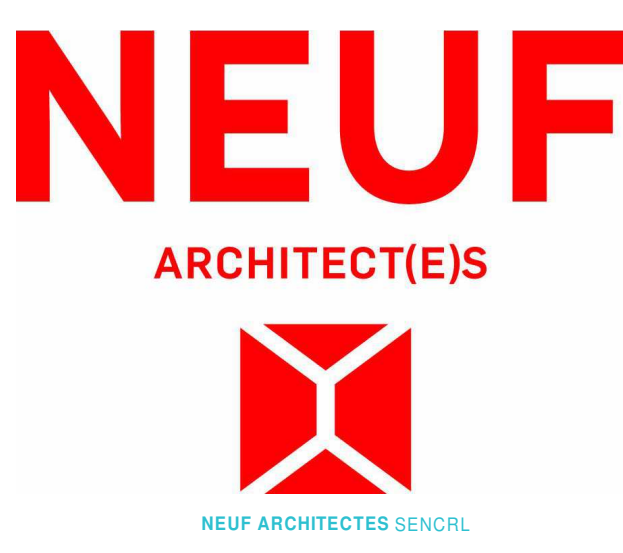
STRUCTURE / structure
qdi
635, boulevard de la Gaspé, gatineau (QC) J8T 8G1
T 819 243-4474 qdi.ca

ARCHITECTURE DE PAYSAGE / Landscape Architect
Levstek Consultants
5977 Hugh Crockett, Ottawa ON K0A 0V0
T 613 825 0519 larouchelevstek.com

CIVIL / Civil
Stantec
400 - 1331 Clyde Avenue, Ottawa ON K2C 3G4
T 613 724-6337 krc.kalbor@stantec.com

ARCHITECTES / Architect
NEUF architect(e)s SENCRAL
630, St-Jul, Rémix-Lévesque C. 52e étage, Montréal QC H3B 1S6
T 514 847 1117 NEUFarchitectes.com

SCEAU / Seal



CLIENT / Client
brigii

OUVRAGE / Project
PETRIES II BLOCK 8
112 units
ORLEANS, ON

NO	RÉVISION	DATE (aa-mm-ii)
A	Issue for Coordination	2021-07-16
B	Issued for Coordination	2021-08-13
C	Issued for Permit (Cancelled)	2021-08-30
D	Issued for SPA	2021-09-23
E	Issued for Full Building Permit	2021-10-01
F	Issued for Coordination	2021-10-06
G	Issued for Tender	2021-10-15
H	Issued for SPA	2022-02-25

DESSIN PAR Drawn by **PM**
DATE (aa.mm.ii) **08/14/17**
TITRE DU DESSIN Drawing Title **HIGH ROOF ELEVATIONS**

VERIFIÉ PAR Checked by **Paul McQ.**
ÉCHELLE Scale **As indicated**

RÉVISION Revision **H**
NO. DESSIN Dwg Number **A207**
#18062

C:\Fichiers Revit\Locaux\P2BL8_10498.02_ARC_INT_R20_pmqqueen.rvt