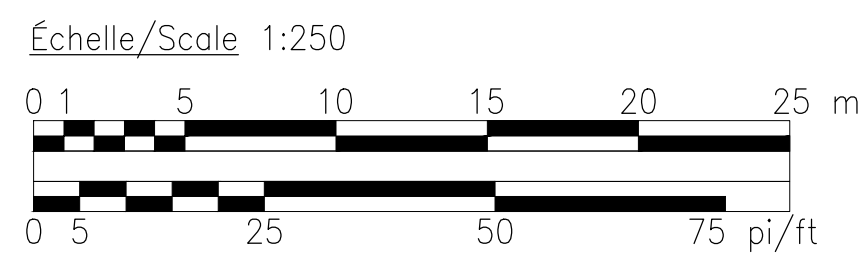


Appendix A  
PL2 Stage 2: RSA[1409] Zoning Compliance Chart

### Site Plan : 112 units - BLOCK 8, 180 Prestige Circle

Applicable sections from Bylaw 2008-250	Requirement	Provided
Assumes that Jeanne d'Arc Boulevard is front lot line and the corner lot line is along Prestige Circle.		
Property area Block 8		7,476.5 m <sup>2</sup>
<b>Table 164A - Apartment dwelling, low rise, Stacked</b>		
Minimum Lot Width (m)	18.0	> 18.0 m
Minimum Lot Area (m <sup>2</sup> )	540.0 m <sup>2</sup>	> 540 m <sup>2</sup>
Maximum Building Height (storeys) - exception RSA[1409]	10	4
Minimum Front Yard Setback (m)	N/A m	N/A m
Minimum Corner Yard Setback (m)	4.5 m	4.5 m
Minimum Interior Side Yard Setback (m)	N/A m	N/A m
Minimum Rear Yard Setback (m) - exception RSA[1409]	7.5 m	>7.5 m
Minimum Setback from Jeanne d'Arc Boulevard (m) - exception RSA[1409]	10.0 m	>10 m
Minimum distance between apartment dwellings under 7 storeys and OS1 zone (m)	7.5 m	>7.5 m
Minimum required building spacing - exception RSA[1409]	3.0	> 3.0 m
<b>City of Ottawa Zoning By-law 2021-277 amends Exception 1409</b>		
Number of units provided		112.0 units
Area in ha		0.75765 ha
Max. number of units	150.0 /ha	147.8 /ha
<b>Section 163(9)</b>		
Minimum landscape area (% of site)	30.0%	47.2%
<b>Section 101 and 102</b>		
Minimum No. of parking spaces (total)	(ratio = 1.2) = 134	137
Minimum No. of visitor parking spaces (total)	(ratio = 0.2) = 22	22
Total Parking (visitor and residential)	156	159
<b>Section 106</b>		
Parking space width (m) per section 106 (3)(a)ii...applicable to 50% of resident spaces	2.4 min	2.4 min
Parking space width (m)	2.6 min 2.75 max	2.6
Minimum parking space depth (m)	5.2	5.2
<b>Section 107</b>		
Driveway access : min width (m) one way	3.0 m	n.a m
Driveway access : min width (m) two way	6.0 m	6.7 m
<b>Section 110</b>		
Minimum landscape area of parking lot (15%)	15 %	35.4%
Minimum landscape buffer width of parking lot not abutting street (m)	1.5 m	1.5 m
...1.5 if fewer than 100 spaces; 3 meters if more than 100 spaces	1.5/3 m	3.0 m
Minimum landscape buffer width of parking lot abutting street (m)	3.0 m	3.0 m
<b>Section 111</b>		
Bicycle Parking Space Requirement (Total)	(ratio = 0.5) = 56	56
<b>Section 137</b>		
Total amenity area in sq. m per unit (min 6m <sup>2</sup> /unit)	672.0	3029.0 m <sup>2</sup>
**Communal amenity area: 50% of total required 'total amenity area' in sq.m. (Total)	336.00	403.0 m <sup>2</sup>
**ground floor common areas		
<b>Section 55 (Accessory Buildings)</b>		
Min. Required Setback from an Int. Side Lot Line or Rear Lot Line not abutting a street		
...rear yard (m)	0.6 m	>0,6 m



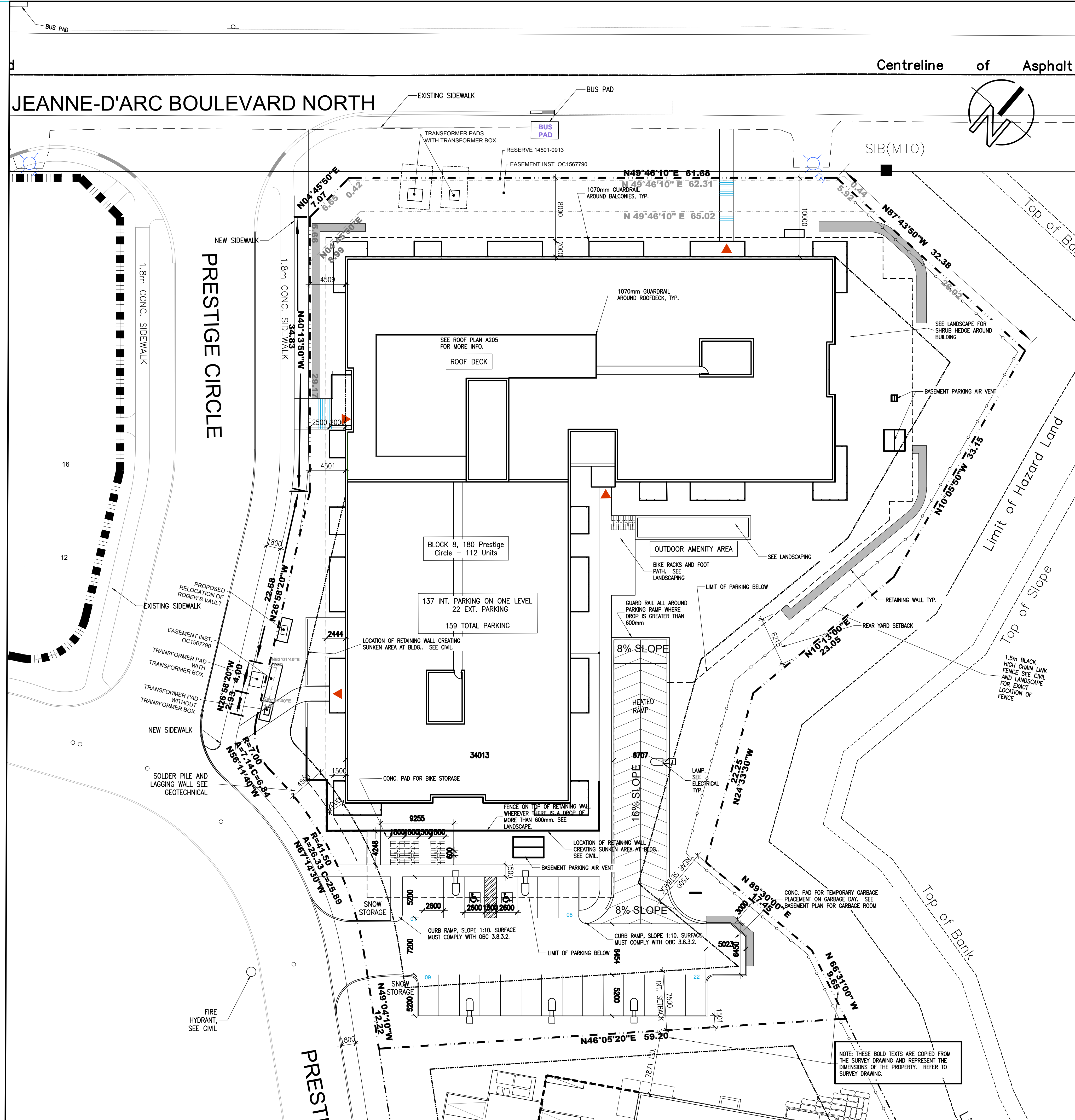
**LEGEND**

--- PROPERTY LINE
- - - SETBACK
- - - EASEMENT OR RESERVE

**LEGEND**

Bicycle parking	
New fence	
New stone retaining wall	
Fire truck path	

**PROPERTY INFORMATION**  
 PIN 14501-0695  
 PART OF BLOCK 2  
 REGISTERED PLAN 4M-1425  
 CITY OF OTTAWA  
 Surveyed by Annis, O'Sullivan, Vollebek Ltd.



**SITE PLAN BLOCK 8**  
 SCALE: 1:250

NOTES GÉNÉRALES / General Notes

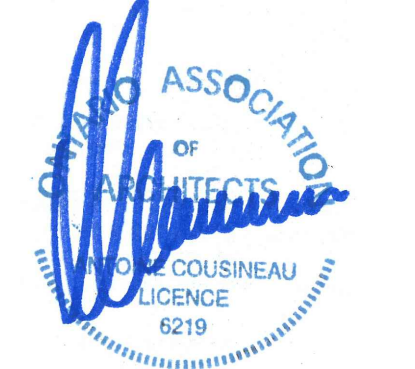
- Ces documents d'architecture sont la propriété exclusive de NEUF architectes, et ne peuvent être utilisés, reproduits ou copiés sans autorisation écrite au préalable. / These architectural documents are the exclusive property of NEUF architectes and cannot be used, copied or reproduced without written pre-authorization.
- Les dimensions apparaissant aux documents doivent être vérifiées par l'entrepreneur avant le début des travaux. / All dimensions which appear on the documents must be verified by the contractor before starting the work.
- Veuillez aviser l'architecte de toute dimension erreur et/ou divergences entre ces documents et ceux des autres professionnels. / The architect must be notified of all errors, omissions and discrepancies between these documents and those of other professionals.
- Les dimensions sur ces documents doivent être lues et non mesurées. / The dimensions on these documents must be read and not measured.

ARCHITECTURE DE PAYSAGE / Landscape architect  
**Levstek Consultants**  
 5871 Hugh Crockett, Ottawa, ON K2A 2W0  
 T 613 826 0518 / larocquelevstek.com

CIVIL / Civil  
**Stantec**  
 400 - 1331 Cycle Avenue, Ottawa ON K2C 3G4  
 T 613 724 4337 / stantec.com

ARCHITECTES / Architect  
**NEUF architecte(s)**  
 630, Boulevard René-Lévesque O. 3<sup>e</sup> étage, Montréal, QC H3B 1S6  
 T 514 847 1117 / NEUFarchitectes.com

SCEAU / Seal



**NEUF**  
 ARCHITECTE(S)

**BRIGIL**  
 CLIENT / Client

OUVRAGE / Project 180 Prestige Circle

**PETRIE'S LANDING BLOCK 8**

EMPLACEMENT / Location NO PROJET / No. 10498.03  
 ORLEANS, ON

LEGAL DESCRIPTION OF PROPERTY  
 Part 3 Plan 4R-31527  
 Also known as Part of Block 2 Plan 4M-1425

NO	REVISION	DATE (aa.mm.jj)
A	City Block 8 SPA	2021-04-15
B	Issue to City	2021-06-10
C	ISSUED FOR PERMIT (Cancelled)	2021-08-30
D	ISSUED TO BRIGIL	2021-09-16
E	ISSUED FOR SPA	2021-09-23
F	FOR FULL BUILDING PERMIT	2021-10-01
G	ISSUED FOR SPA	2021-10-05
H	ISSUED FOR TENDER	2021-10-15
J	ISSUED FOR SPA 4th REV.	2022-01-14
K	ISSUED FOR SPA 5TH REV.	2022-02-22
L	ISSUED FOR SPA	2022-02-25

DESSIN PAR / Drawn by P. MCQ.  
 DATE (aa.mm.jj) 22.02.28  
 TITRE DU DESSIN / Drawing Title

VERIFIÉ PAR / Checked by P. MCQ.  
 ÉCHELLE / Scale INDIQUÉE

**Site Plan Block 8**

REVISION / NO. DESSIN / Dwg Number  
**G A100c**  
 #18062