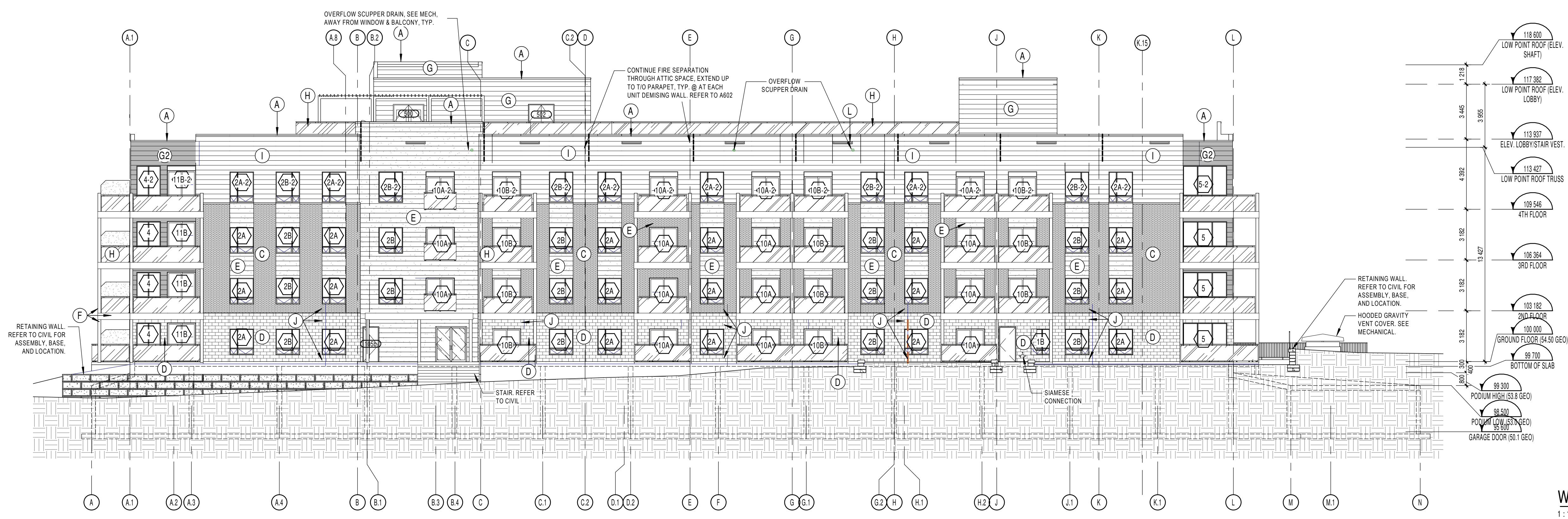
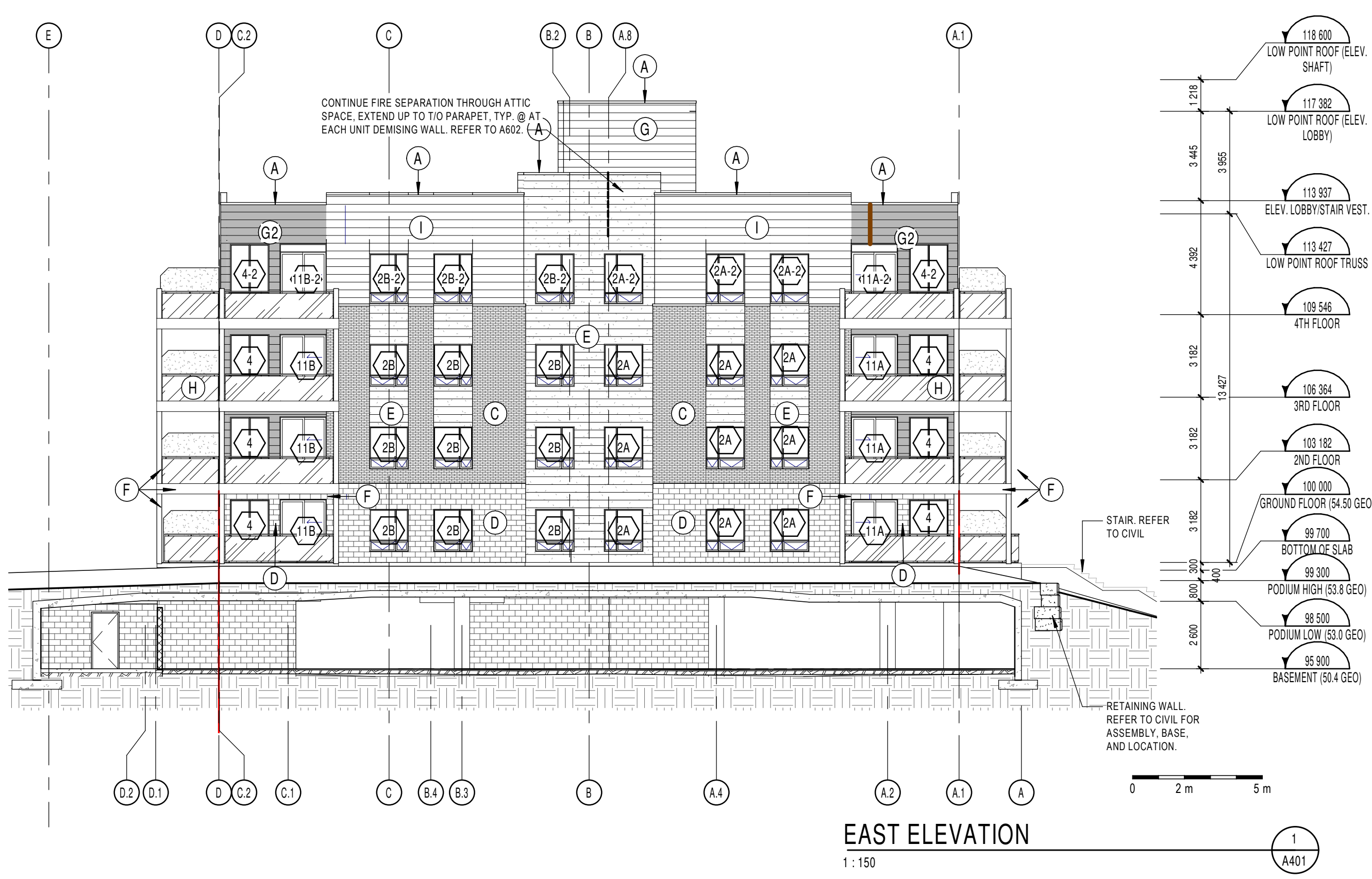
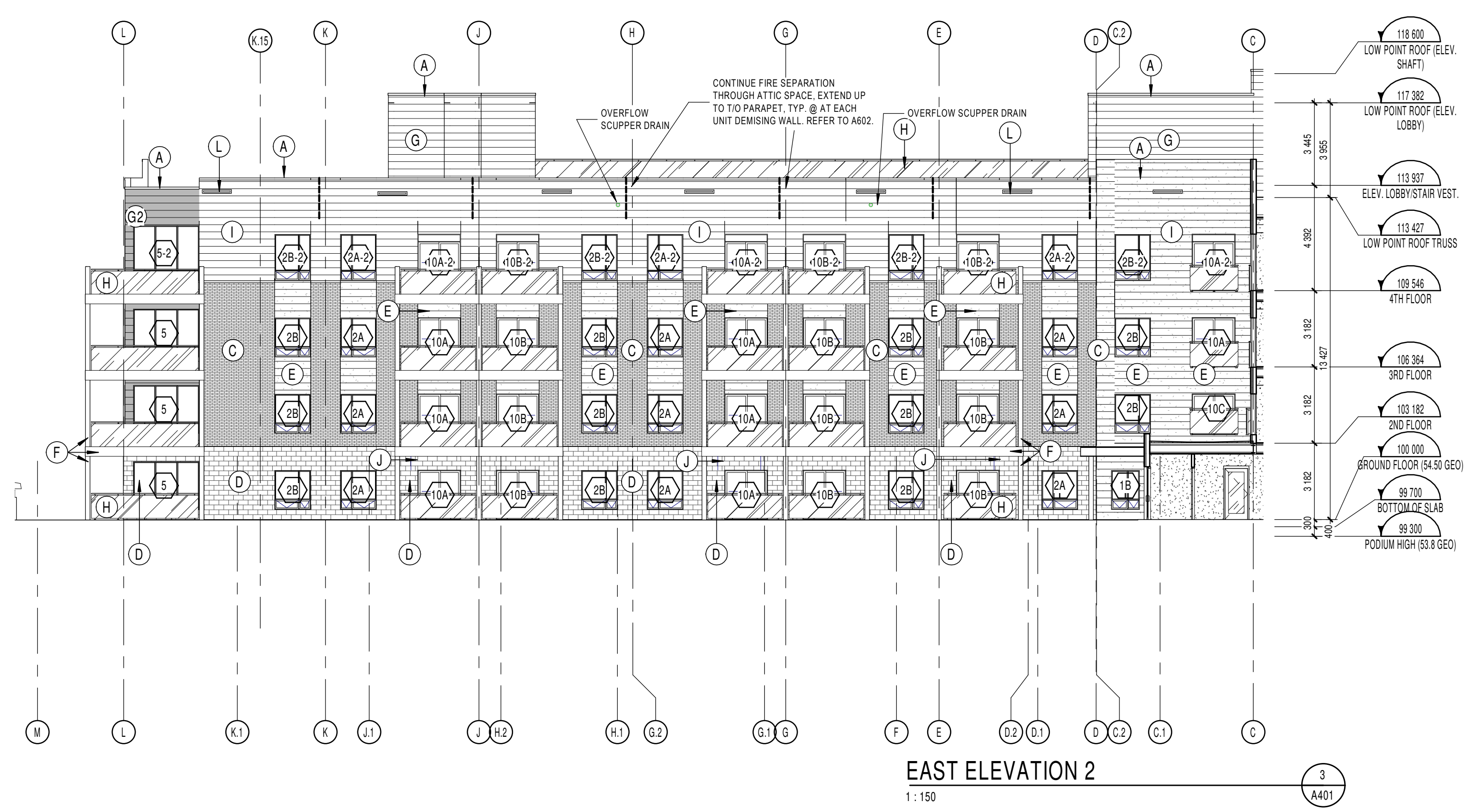


**Exterior finishes legend**

<b>A</b> PREFINISHED MTL. PARAPET CAP. COLOUR TO MATCH EXTERIOR WALL COLOUR. PROVIDE MTL. CLOSURE & FLASHING AROUND EACH DOOR & WINDOW OPENING. COLOUR TO MATCH WALL COLOUR.	<b>B</b> JAMES WATSON FIBER CEMENT LAP EQUIVALENT. COLOUR: LIGHT GREY. <b>NOT USED</b>	<b>B2</b> HARDIE FIBER CEMENT LAP EQUIVALENT. COLOUR: CHARCOAL. <b>NOT USED</b>	<b>C</b> BRAMPTON BRICK ARCHITECTURAL SERIES COLOR: SILVER	<b>D</b> BRAMPTON STONE FINESSE SERIES 19N390, STANDARD FINISH COLOUR: ICELAND WHITE	<b>E</b> METALLIC, DISTINCTION PREPAINTED STEEL SIDING COLOUR: CEDAR	<b>F</b> PREPAINTED ALUMINIUM BALCONY POST CLADDING AND FASCIAS AT BALCONIES COLOUR: CHARCOAL	<b>G</b> METALLIC, DISTINCTION PREPAINTED STEEL SIDING COLOUR: URBAN GREY	<b>H</b> ALUMINIUM GUARDRAIL & POSTS W/ CLEAR GLASS INFILL PANELS. GUARDRAIL & POSTS COLOUR TO MATCH BALCONY POSTS. TYP. SEE SPECS FOR TYPE OF GLASS.	<b>I</b> METALLIC, DISTINCTION PREPAINTED STEEL SIDING COLOUR: BONEWHITE	<b>J</b> CONT. CONTROL JOINT ALONG MASONRY. SEE SPEC FOR MAX. SPACING SEALER COLOUR: MATCH MASONRY.	<b>K</b> WINDOW FRAME COLOUR: BLACK
<b>L</b> PREFINISHED METAL LOUVER FOR ATTIC VENTILATION. 150x1220mm. COLOUR TO MATCH WALL COLOUR. TYP. @ EACH UNIT	<b>M</b> VERTICAL HARDIEPANEL SIDING SMOOTH FINISH COLOUR: LIGHT GREY TO BE USED ON EXPOSED FOUNDATION WALL NEAR AND AROUND GARAGE DOOR										

**NOTE:**  
 1. ALL CHANGE IN HEIGHT OF PARAPETS SHOULD BE IN LINE WITH THE EDGE OF BRICK BELOW.  
 2. REFER TO MECHANICAL DRAWINGS FOR SIZES & LOCATIONS OF ALL EXHAUSTS/VENTS. COLOUR TO MATCH WALL FINISHES.  
 3. REFER TO MECHANICAL DRAWINGS FOR LOCATION OF FIRE SIAMENSE CONNECTION.



**APPROVED**  
 By wildmange at 7:17 pm, Jun 01, 2022

*G. Wildman*

**GERALDINE WILDMAN**  
 ACTING MANAGER, DEVELOPMENT REVIEW EAST  
 PLANNING, REAL ESTATE & ECONOMIC DEVELOPMENT  
 DEPARTMENT, CITY OF OTTAWA

**NOTES GÉNÉRALES / General Notes**

- Ces documents d'architecture sont la propriété exclusive de NEUF architectes et ne peuvent être utilisés, reproduits ou copiés sans autorisation écrite préalable. / These architectural documents are the exclusive property of NEUF architects and cannot be used, copied or reproduced without written pre-authorization.
- Les dimensions apparaissant sur ces documents doivent être vérifiées par l'entrepreneur avant le début des travaux. / All dimensions which appear on the documents must be verified by the contractor before to start the work.
- Veuillez aviser l'architecte de toute dimension erreur et/ou divergence entre ces documents et ceux des autres professionnels. / The architect must be notified of all errors, omissions and discrepancies between these documents and those of the others professionals.
- Les dimensions sur ces documents doivent être lues et non mesurées. / The dimensions on these documents must be read and not measured.

**GEOTECHNIQUE / Geotechnical**  
**Paterson Group Inc.**  
 154 Colomade Road South Ottawa (Nepere), Ontario Canada K2E 7J5  
 T 613 226-7381 www.patersongroup.ca

**MÉCANIQUE ÉLECTRIQUE / Mechanical Electrical**  
**LCA**  
 15, rue De Valcourt, unité 6, Gatineau, Québec, J8T 8H1  
 T 819 24-8383 www.larouchecostel.ca

**STRUCTURE / structure**  
**qdi**  
 635, boulevard de la Gappe, gatineau (QC) J8T 8G1  
 T 819 243-4424 lqdi.ca

**ARCHITECTURE DE PAYSAGE / Landscape Architect**  
**Lestek Consultants**  
 6971 High Crescent, Ottawa ON K2V 0V9  
 T 613 825 0518 larcosquelestek.com

**CIVIL / Civil**  
**Stantec**  
 400 - 1331 Clays Avenue, Ottawa ON K2C 3G4  
 T 613 224-8333 www.stantec.com

**ARCHITECTES / Architect**  
**NEUF architect(e)s SENCL**  
 630, St-Jul, Rues-Lévesque C. 52e étage, Montréal QC H3B 1S6  
 T 514 847 1117 NEUFarchitectes.com

**SCEAU / Seal**



CLIENT Client

**brigi**

OUVRAGE Project

**PETRIES II BLOCK 8**  
 112 units

EMPLACEMENT Location NO PROJET No.  
 ORLEANS, ON 10498.02

NO	REVISION	DATE (aa-mm-ii)
A	Issue for Coordination	2021-07-16
B	Issued for Coordination	2021-08-30
C	Issued for Permit (Cancelled)	2021-08-30
D	Issued for SPA	2021-09-23
E	Issued for Full Building Permit	2021-10-01
F	Issued for Tender	2021-10-15
G	Permit 1st Review	2021-12-03
H	Issued for Coordination	2022-02-11
I	Issued for SPA	2022-02-25

DESSIN PAR Drawn by  
 PM

VERIFIÉ PAR Checked by  
 Paul McC.

DATE (aa.mm.ii)  
 07/29/10

ÉCHELLE Scale  
 As indicated

TITRE DU DESSIN Drawing Title

**WEST & EAST ELEVATIONS**

REVISION Revision NO. DESSIN Dwg Number  
**A401**  
 #18062