

NOTES GÉNÉRALES / General Notes

- Ces documents d'architecture sont la propriété exclusive de NEUF architectes et ne peuvent être utilisés, reproduits ou copiés sans autorisation écrite préalable. / These architectural documents are the exclusive property of NEUF architectes and cannot be used, copied or reproduced without written pre-authorization.
- Les dimensions apparaissant sur ces documents doivent être vérifiées par l'entrepreneur avant le début des travaux. / All dimensions which appear on the documents must be verified by the contractor before to start the work.
- Veuillez aviser l'architecte de toute dimension erreur et/ou divergence entre ces documents et ceux des autres professionnels. / The architect must be notified of all errors, omissions and discrepancies between these documents and those of the other professionals.
- Les dimensions sur ces documents doivent être lues et non mesurées. / The dimensions on these documents must be read and not measured.

GEOTECHNIQUE / Geotechnical
Paterson Group Inc.
 154 Colomède Road South Ottawa (Nepean), Ontario Canada K2E 7J5
 T 613 226-7381 www.patersongroup.ca

MÉCANIQUE ÉLECTRIQUE / Mechanical Electrical
LCA
 15, rue Du Valcourt, unité 6, Gatineau, Québec (QC) J8T 8H1
 T 819 24-8383 www.larouchecanet.ca

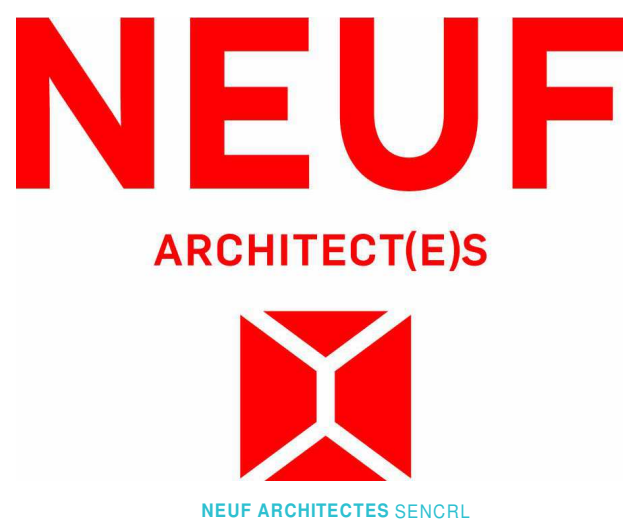
STRUCTURE / structure
qdi
 635, boulevard de la Gaspé, gatineau (QC) J8T 8G1
 T 819 243-4474 qdi.ca

ARCHITECTURE DE PAYSAGE / Landscape Architect
Lestek Consultants
 5971 Hugh Crofton, Ottawa ON K0K 0V0
 T 613 825 0518 larouchelvestek.com

CIVIL / Civil
Stantec
 400 - 1331 Clyde Avenue, Ottawa ON K2C 3G4
 T 613 724-6337 krc.albor@stantec.com

ARCHITECTES / Architect
NEUF architect(e)s SENCRL
 630, St-Jul, Riem-Lévesque C. 52e étage, Montréal QC H3B 1S6
 T 514 847 1117 NEUFarchitectes.com

SCEAU / Seal



CLIENT / Client
brigi

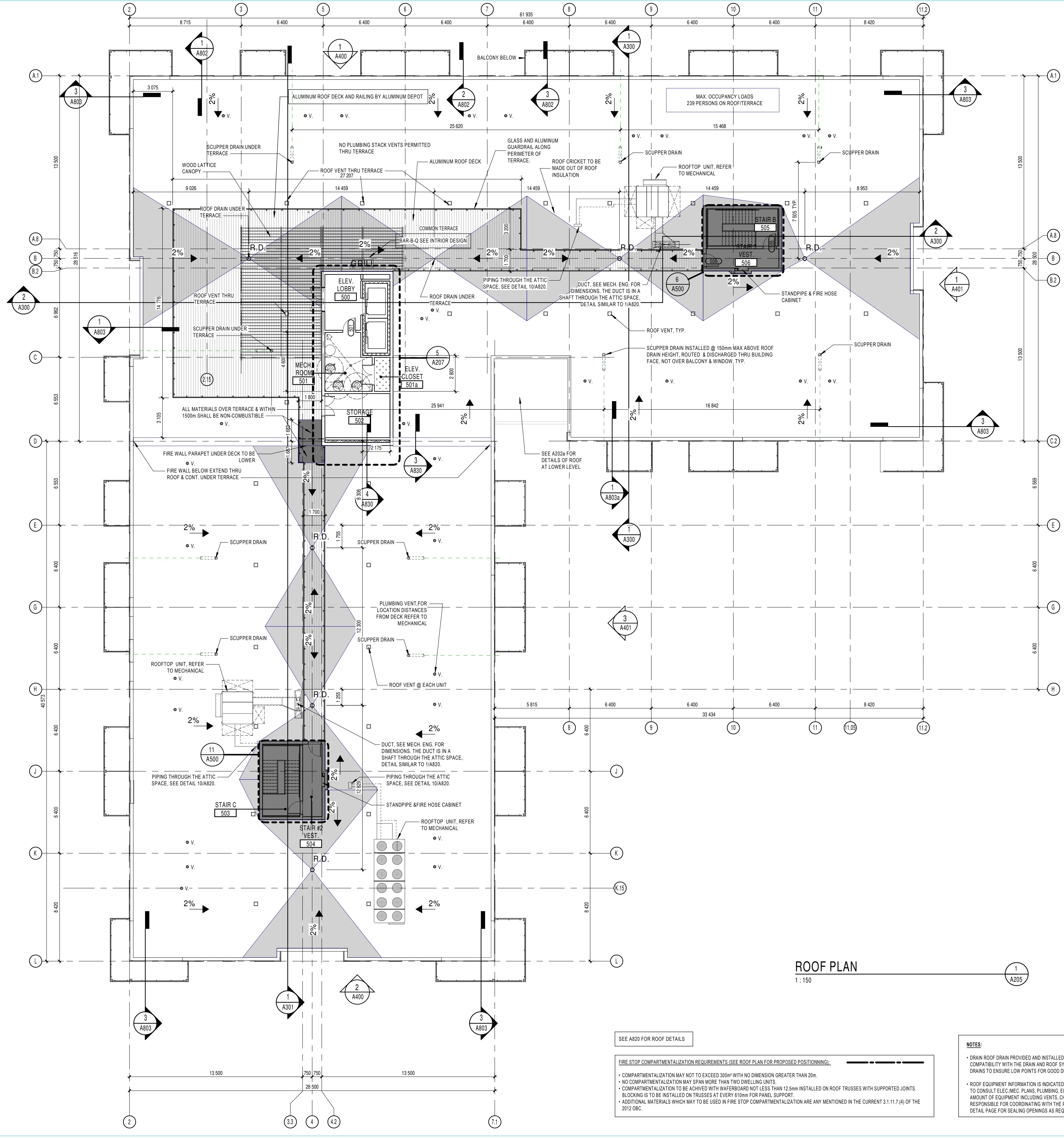
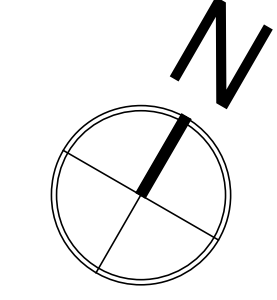
OUVRAGE / Project
PETRIES II BLOCK 8
 112 units
 ORLEANS, ON

NO	RÉVISION	DATE (aa-mm-ii)
A	Issue for Coordination	2021-07-16
B	Issued for Coordination	2021-08-13
C	Issued for Permit (Cancelled)	2021-08-30
D	Issued for SPA	2021-09-23
E	Issued for Coordination	2021-09-24
F	Issued for Full Building Permit	2021-10-01
G	Issued for Coordination	2021-10-06
H	Issued for Tender	2021-10-15
I	Issued for Coordination	2022-02-11
J	Issued for Coordination	On Hold
K	Issued for SPA	2022-02-25

DESSIN PAR / Drawn by PM
VERIFIÉ PAR / Checked by Paul McQ.
 DATE (aa.mm.ii) 06/14/17
 ÉCHELLE / Scale As indicated

TITRE DU DESSIN / Drawing Title
ROOF PLAN

RÉVISION / Revision **NO. DESSIN / Dwg Number**
K **A205**
 #18062



APPROVED
 By wildmange at 7:18 pm, Jun 01, 2022

G. Wildman
GERALDINE WILDMAN
 ACTING MANAGER, DEVELOPMENT REVIEW EAST
 PLANNING, REAL ESTATE & ECONOMIC DEVELOPMENT
 DEPARTMENT, CITY OF OTTAWA

PLAN LEGEND

- EXIT - NO DRILLING OR OPENINGS FOR ANY EQUIPMENT ARE ALLOWED IN THE FRR PARTITIONS NOT SERVING THE EXIT
- FOR ELECTRICAL BOXES IN THE FRR PARTITIONS WHEN OUTLET BOX IS NOT SERVING THE EXIT, SEE DETAIL 9/A854
- CEILING SHAFT WALL, SEE NOTE ON PLANS

ROOF TRUSS NOTE
 SEE STRUCTURE FOR ROOF TRUSS HEIGHT

GENERAL NOTES

- NO DRILLING OR OPENINGS FOR ANY EQUIPMENT ARE ALLOWED IN THE FRR PARTITIONS AT THE EXITS.
- ALL OPENINGS FOR ELECTRICAL BOXES IN FRR PARTITION MUST BE OFFSET TO KEEP THE FRR WALLS INTEGRITY.
- BALCONIES: FOR ALL CORNER BALCONIES, CREATE SLOPE IN BOTH DIRECTION FACING AWAY FROM THE BUILDING.
- SEE INTERIOR DESIGN DRAWINGS FOR REFLECTIVE CEILING PLANS

ROOF PLAN
 1:150

SEE A820 FOR ROOF DETAILS

FIRE STOP COMPARTMENTALIZATION REQUIREMENTS (SEE ROOF PLAN FOR PROPOSED POSITIONING):

- COMPARTMENTALIZATION MAY NOT EXCEED 300m² WITH NO DIMENSION GREATER THAN 20m.
- NO COMPARTMENTALIZATION MAY SPAN MORE THAN TWO DRILLING UNITS.
- COMPARTMENTALIZATION TO BE ACHIEVED WITH WAFFERBOARD NOT LESS THAN 12.5mm INSTALLED ON ROOF TRUSSES WITH SUPPORTED JOINTS. BLOCKING IS TO BE INSTALLED ON TRUSSES AT EVERY 610mm FOR PANEL SUPPORT.
- ADDITIONAL MATERIALS WHICH MAY BE USED IN FIRE STOP COMPARTMENTALIZATION ARE ANY MENTIONED IN THE CURRENT 3.1.11.7.4) OF THE 2012 OBC.

NOTES:

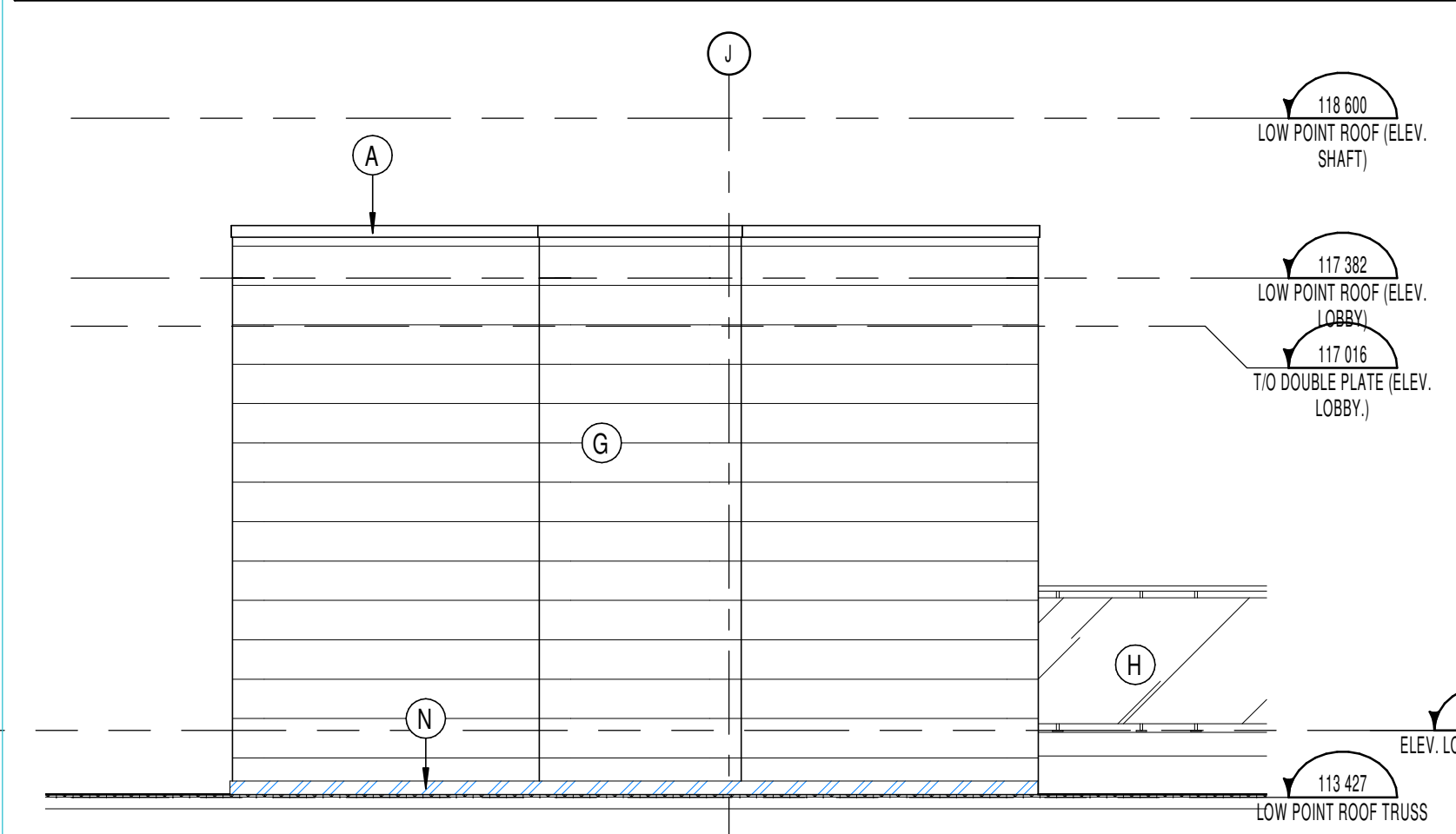
- DRAIN ROOF DRAIN PROVIDED AND INSTALLED BY THE PLUMBER. COORDINATE WITH ROOFING CONTRACTOR FOR COMPATIBILITY WITH THE DRAIN AND ROOF SYSTEM. THE ROOFING CONTRACTOR IS RESPONSIBLE TO LOCATE THE ROOF DRAINS TO ENSURE LOW POINTS FOR GOOD DRAINAGE SLOPE.
- A SIGN WILL BE ADDED ON THE WALL OF THE ELEVATOR LOBBY STATING THE MAXIMUM OCCUPANT LOAD FOR THE ROOF IS 239 PEOPLE.
- ROOF EQUIPMENT INFORMATION IS INDICATED FOR REFERENCE PURPOSES ONLY. ALL CONTRACTORS ARE RESPONSIBLE TO CONSULT ELEC. MEC. PLUMBING, ELECTRICAL, STRUCTURE, FIRE PROTECTION, ETC. TO QUANTIFY EXACT AMOUNT OF EQUIPMENT INCLUDING VENTS, CHIMNEYS, FLUES, ETC. CONTRACTOR AND EACH SUB-CONTRACTOR IS RESPONSIBLE FOR COORDINATING WITH THE PROFESSIONALS INVOLVED BEFORE EXECUTION ON SITE PLAN. SEE ROOF DETAIL PAGE FOR SEALING OPENINGS AS REQUIRED.

C:\Fichiers Revit\Local\P2BL8_10498.02_ARC_INT_R20_pmaqueen.rvt

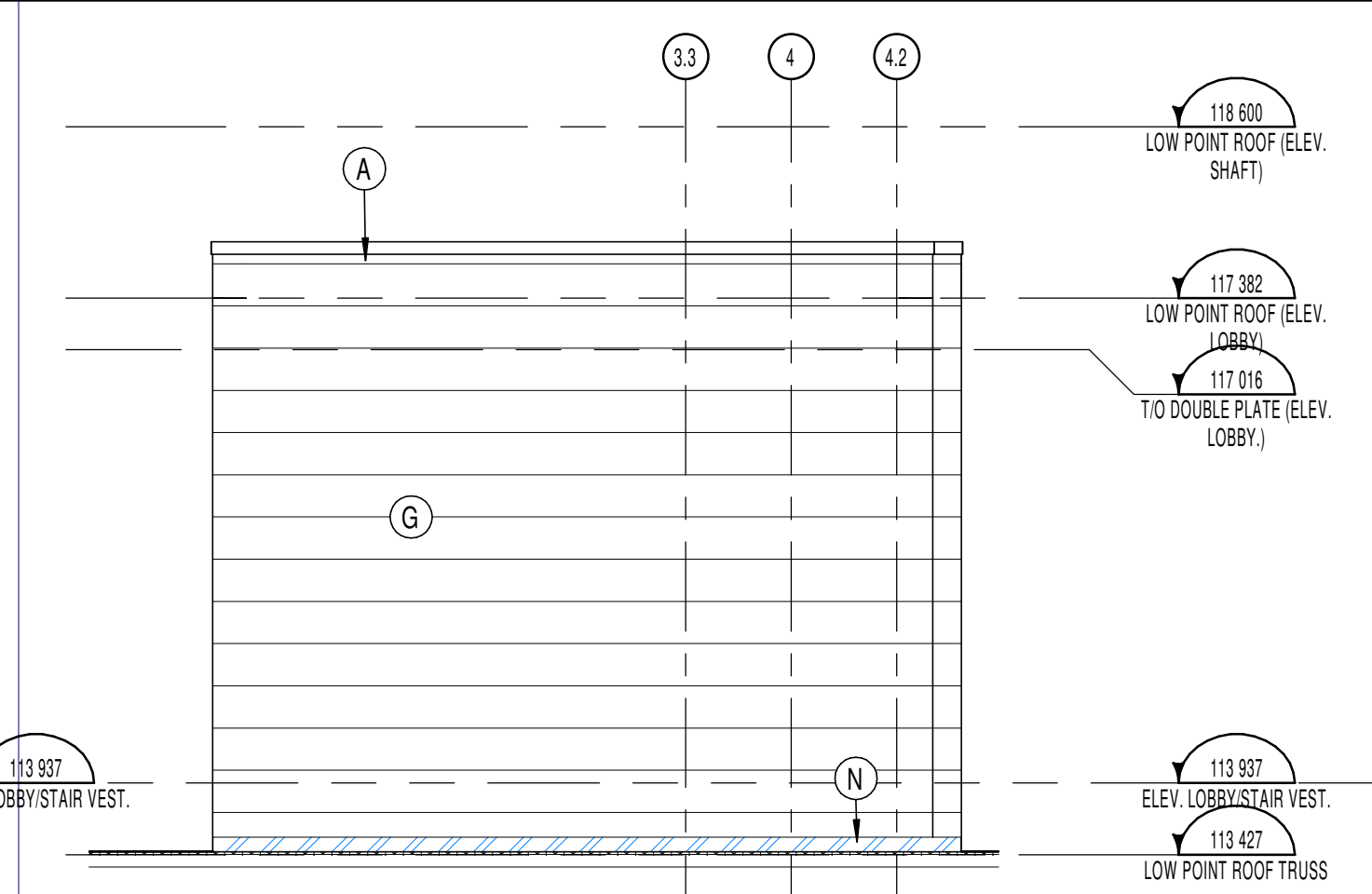
PLOT DATE: 2022-02-28 12:34:52 PM

Exterior finishes legend

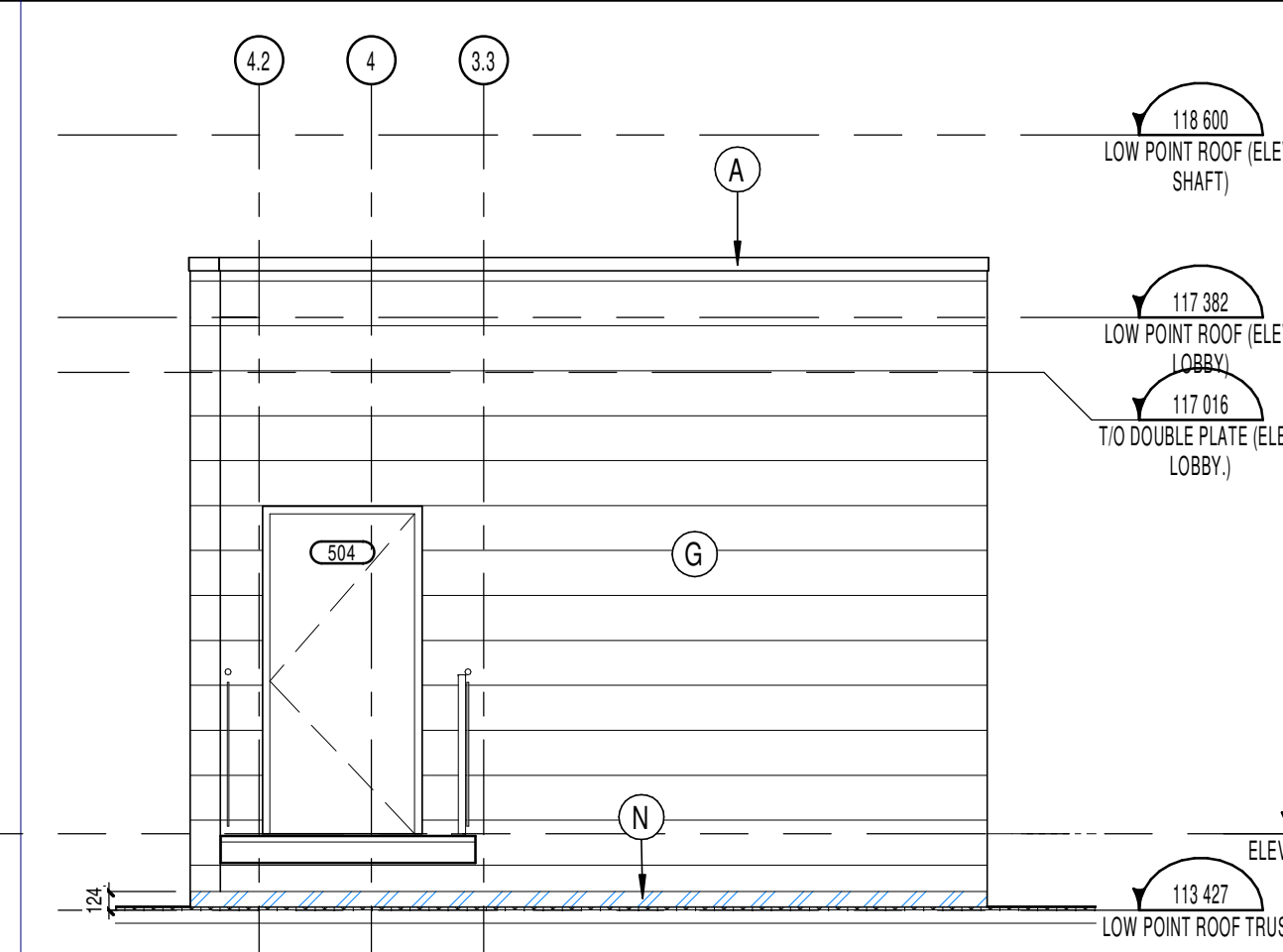
A	PRE-FINISHED MTL PARAPET CAP. COLOUR TO MATCH EXTERIOR WALL COLOUR. PROVIDE MTL COLOURED & FLASHING AROUND EACH DOOR & WINDOW OPENING. COLOUR TO MATCH WALL COLOUR.	B	JAMES WOOD FIBER CEMENT LAP. COLOUR: LIGHT GREY. NOT USED	B2	HARDE FIBER CEMENT LAP OR EQUIVALENT. COLOUR: CHARCOAL. NOT USED	C	BRAMPTON BRICK ARCHITECTURAL SERIES. COLOUR: SILVER	D	BRAMPTON STONE FINESSE SERIES 150x250. STANDARD FINISH. COLOUR: ICELAND WHITE	E	METALLIC, DISTINCTION PREPAINTED STEEL SIDING. COLOUR: CEDAR.	F	PREPAINTED ALUMINUM BALCONY POST CLADDING AND FASCIA AT BALCONIES. COLOUR: CHARCOAL	G	METALLIC, DISTINCTION PREPAINTED STEEL SIDING. COLOUR: URBAN GREY	H	ALUMINUM GUARDRAIL & POSTS W/ CLEAR GLASS INFILL PANELS. GUARDRAIL & POSTS COLOUR TO MATCH BALCONY POSTS. TYP. SEE SPECS FOR TYPE OF GLASS.	I	METALLIC, DISTINCTION PREPAINTED STEEL SIDING. COLOUR: BONEWHITE	J	CONT. CONTROL JOINT ALONG MASONRY. SEE SPEC FOR MAX. SPACING. SEALER COLOUR: MATCH MASONRY.	K	WINDOW FRAME COLOUR: BLACK
L	PRE-FINISHED METAL LOUVER FOR ATTIC VENTILATION. 150x120mm. COLOUR TO MATCH WALL COLOUR. TYP. @ EACH UNIT	M	VERTICAL HARDFIBER SIDING SMOOTH FINISH. COLOUR: LIGHT GREY. TO BE USED ON EXPOSED FOUNDATION WALL NEAR AND AROUND GARAGE DOOR																				



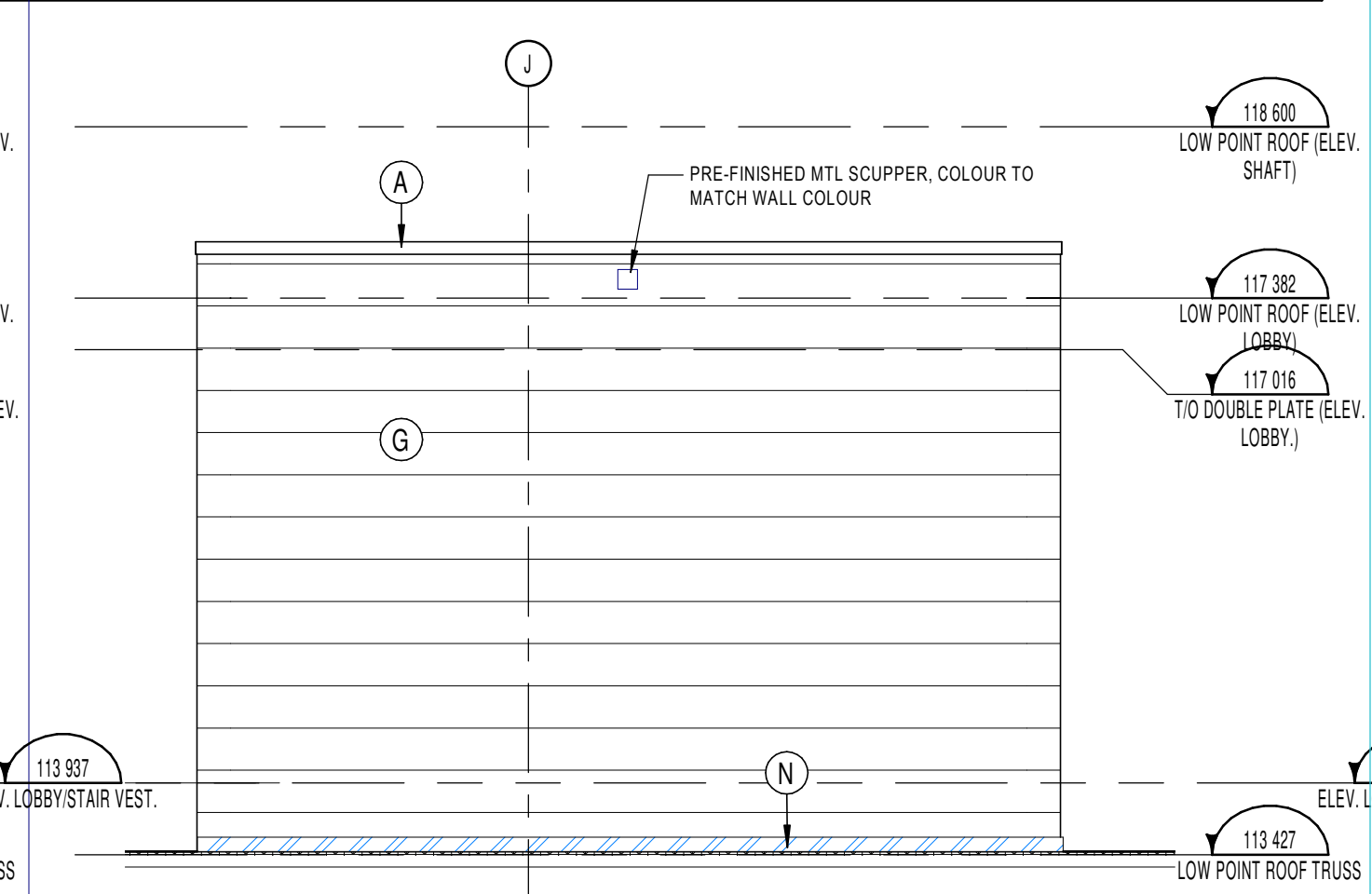
STAIR C ROOF EAST ELEVATION
1:50



STAIR C ROOF SOUTH ELEVATION
1:50



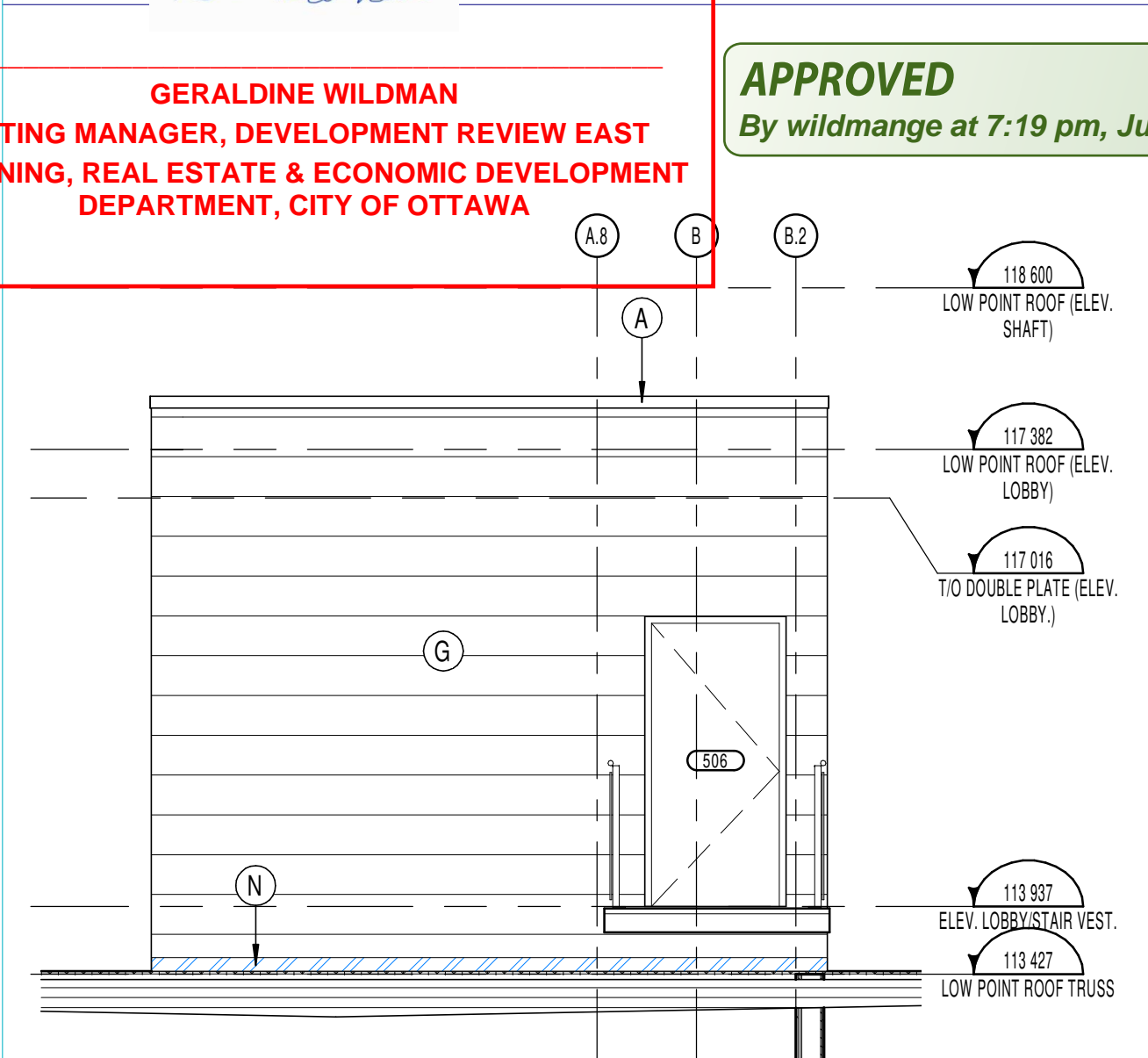
STAIR C ROOF NORTH ELEVATION
1:50



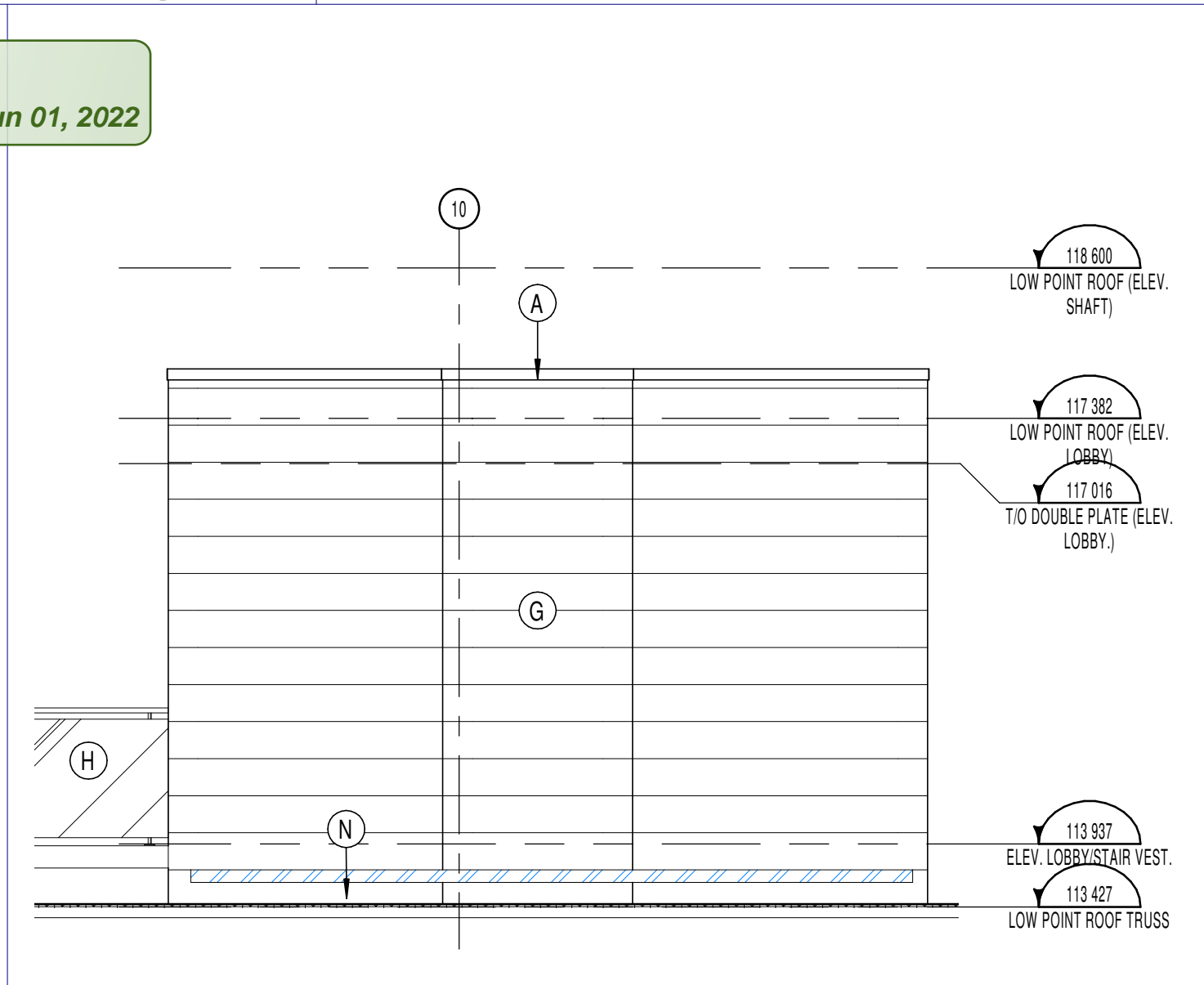
STAIR C ROOF WEST ELEVATION
1:50

G. Wildman
GERALDINE WILDMAN
ACTING MANAGER, DEVELOPMENT REVIEW EAST
PLANNING, REAL ESTATE & ECONOMIC DEVELOPMENT
DEPARTMENT, CITY OF OTTAWA

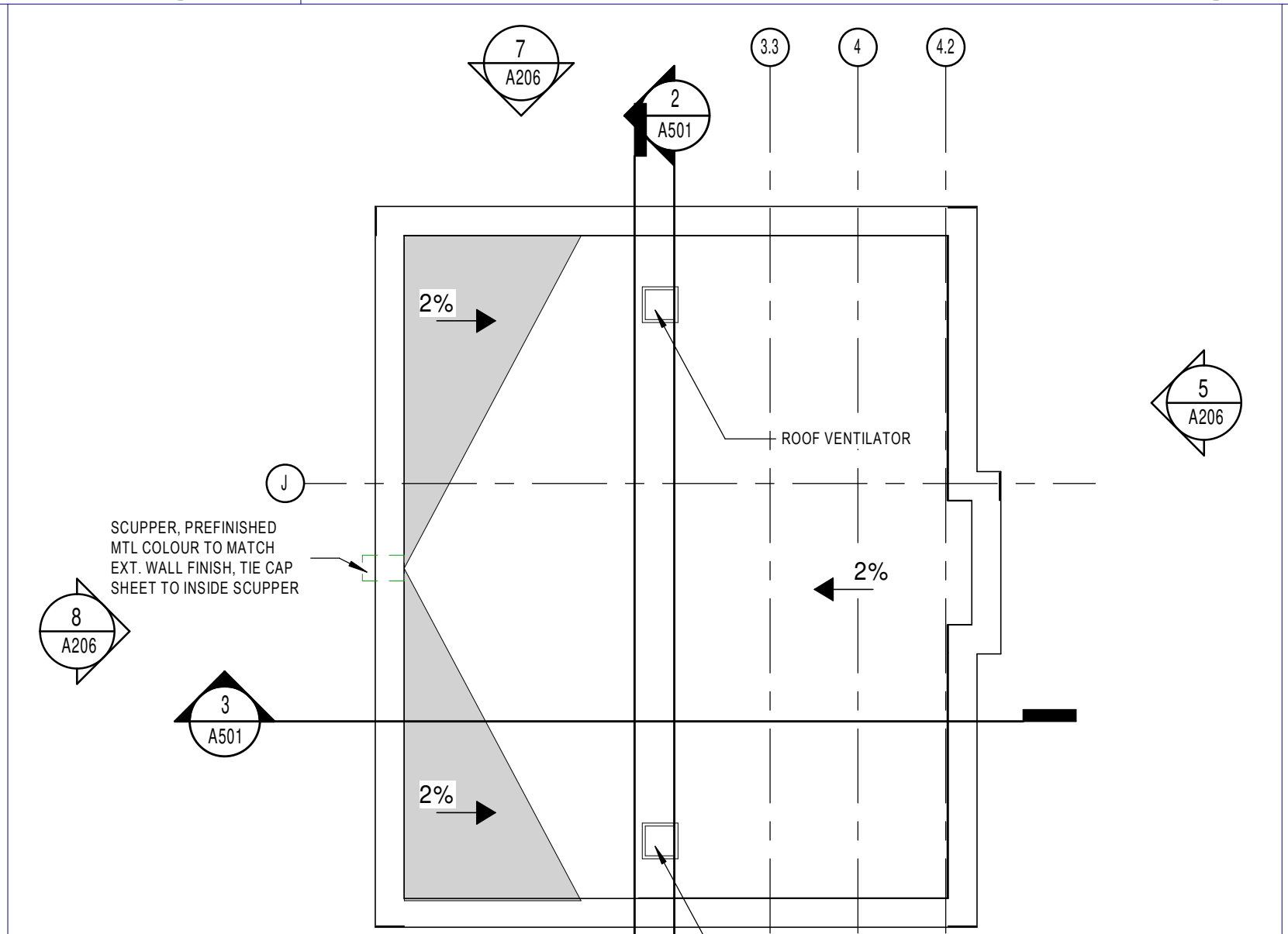
APPROVED
By wildmange at 7:19 pm, Jun 01, 2022



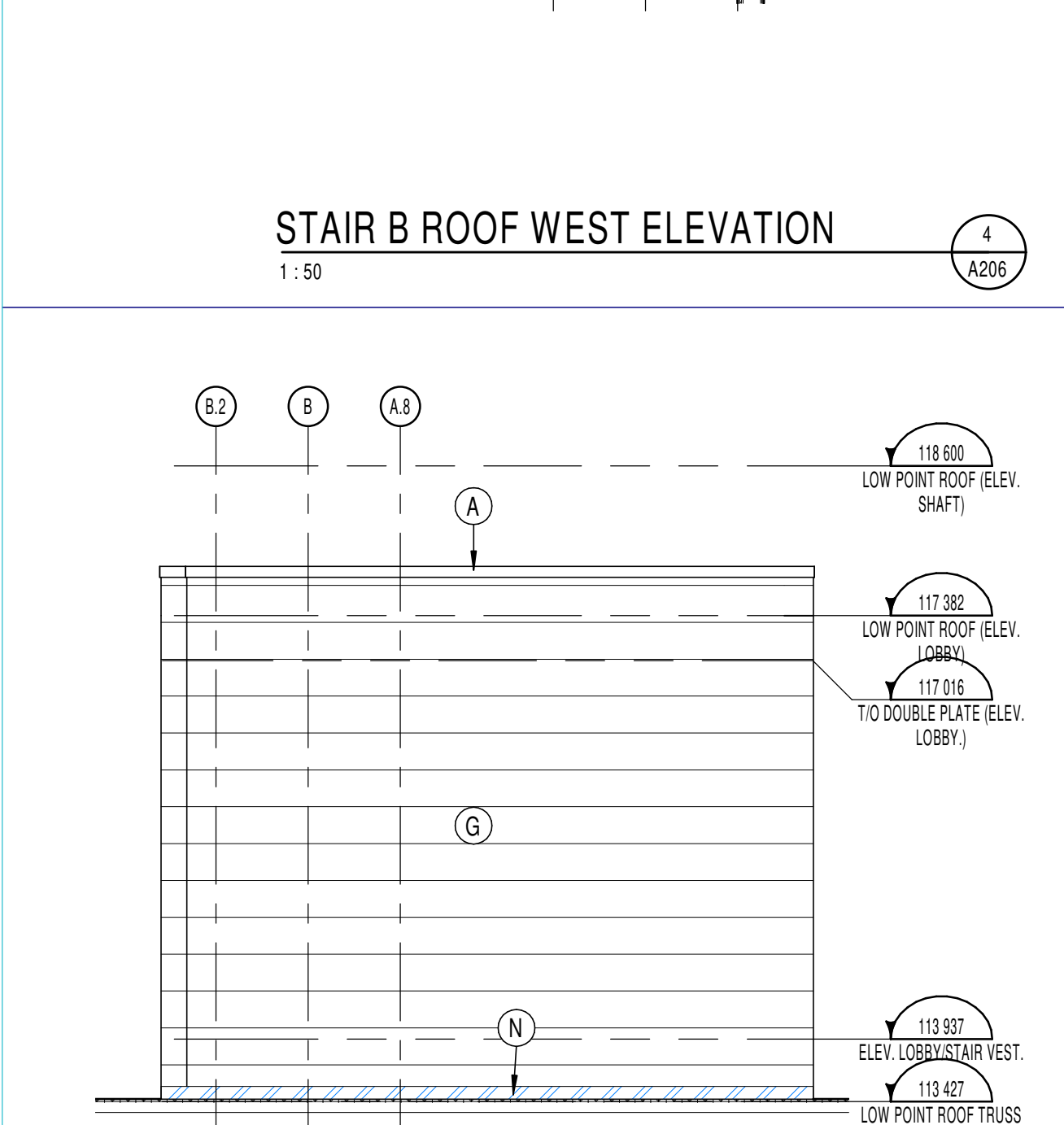
STAIR B ROOF WEST ELEVATION
1:50



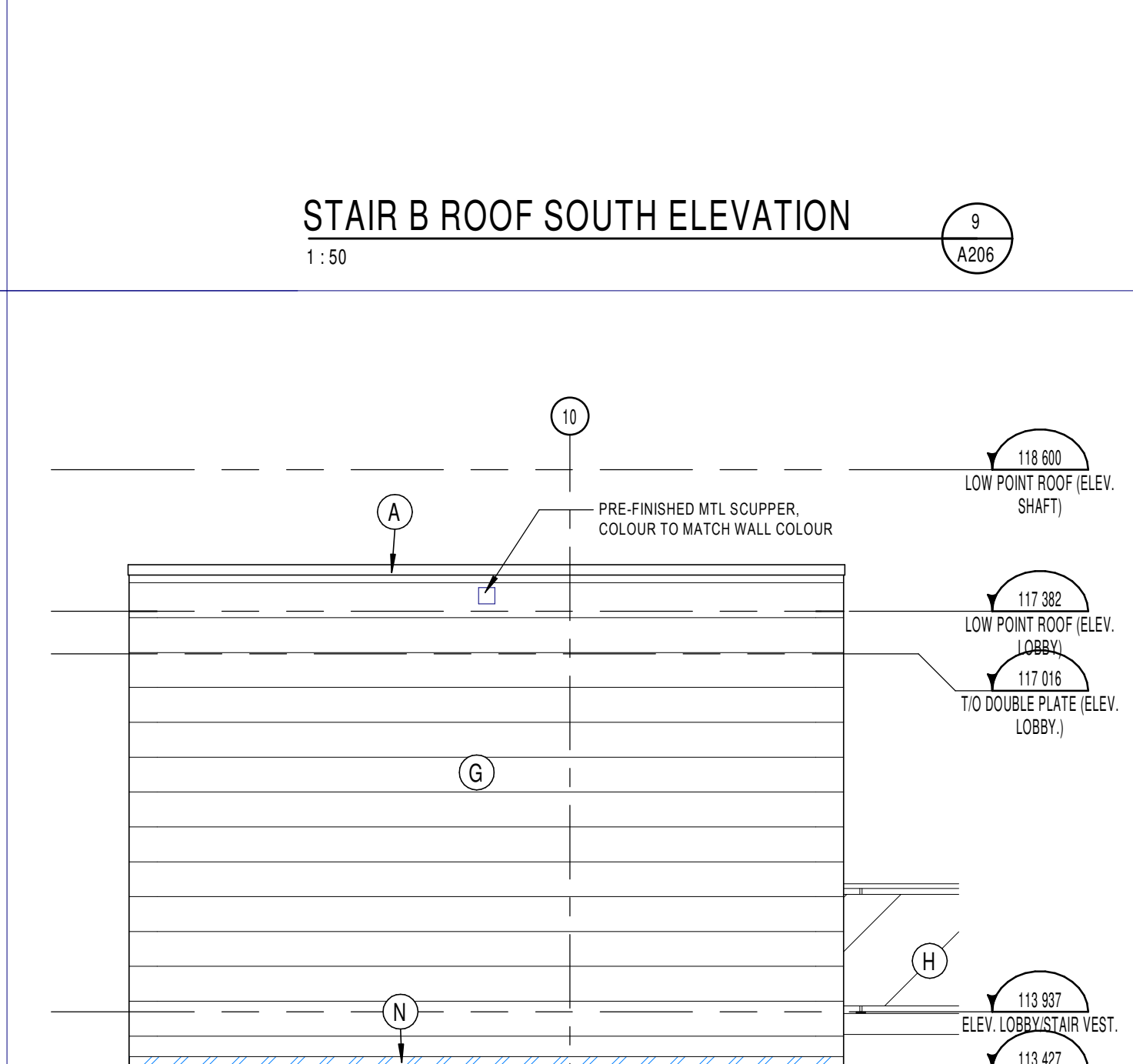
STAIR B ROOF SOUTH ELEVATION
1:50



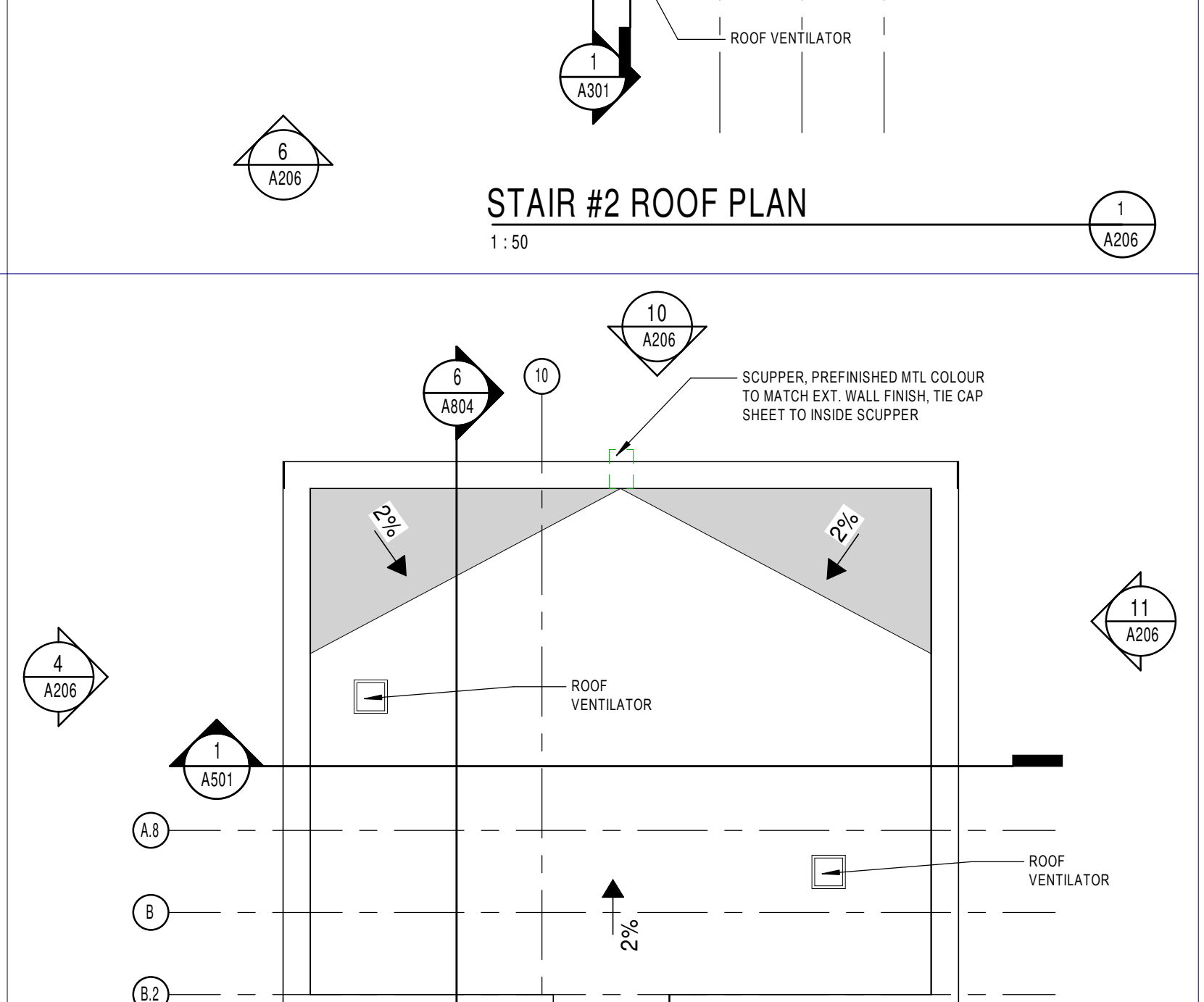
STAIR #2 ROOF PLAN
1:50



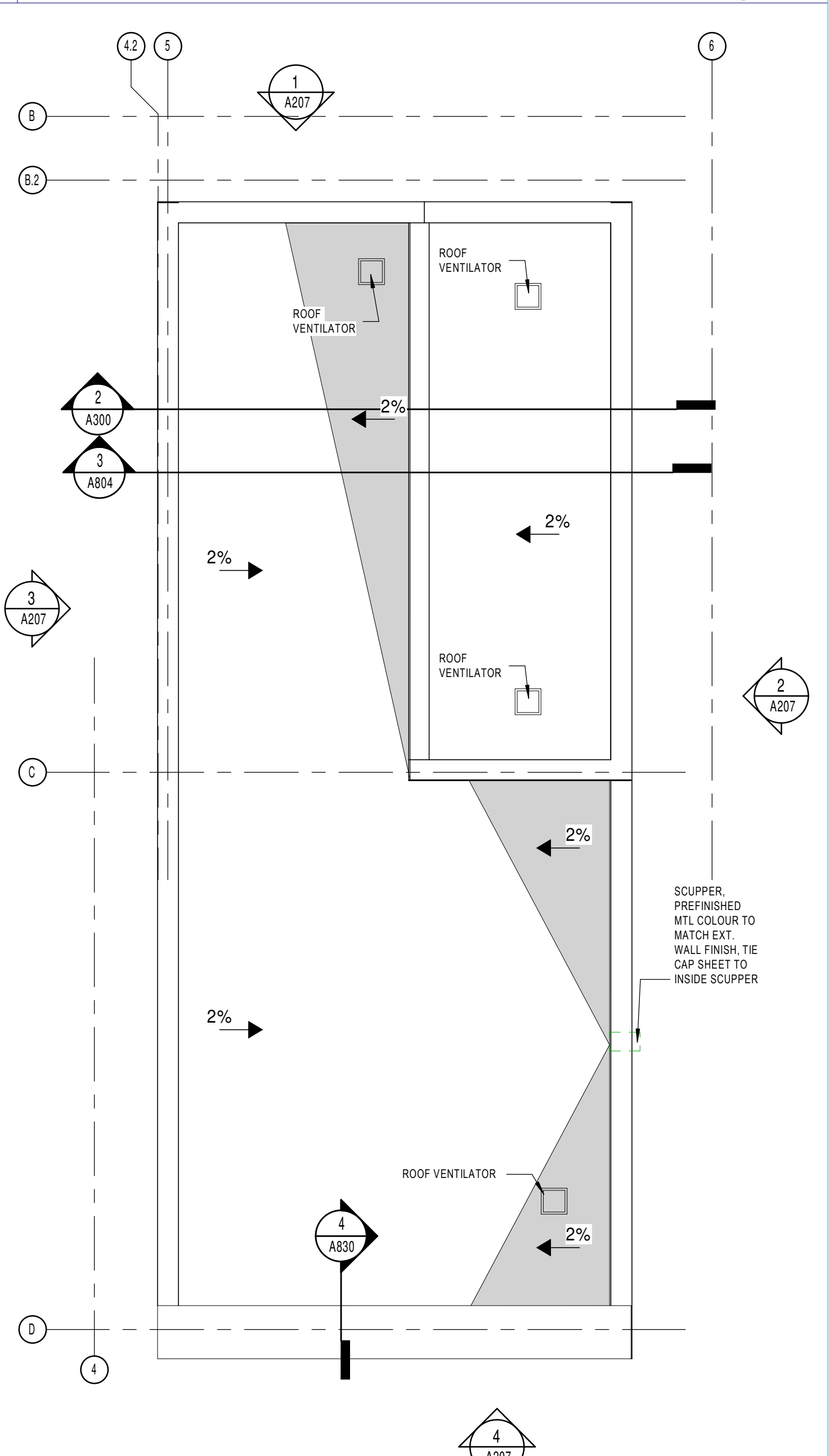
STAIR B ROOF EAST ELEVATION
1:50



STAIR B ROOF NORTH ELEVATION
1:50



STAIR #3 ROOF PLAN
1:50



ELEVATOR ROOF PLAN
1:50

NOTES GÉNÉRALES / General Notes

- Ces documents d'architecture sont la propriété exclusive de NEUF architect(e)s et ne peuvent être utilisés, reproduits ou copiés sans autorisation écrite préalable. / These architectural documents are the exclusive property of NEUF architect(e)s and cannot be used, copied or reproduced without written pre-authorization.
- Les dimensions apparaissant sur ces documents doivent être vérifiées par l'entrepreneur avant le début des travaux. / All dimensions which appear on the documents must be verified by the contractor before to start the work.
- Vous devez aviser l'architecte de toute dimension erronée et/ou divergente entre ces documents et ceux des autres professionnels. / The architect must be notified of all errors, omissions and discrepancies between these documents and those of the others professionals.
- Les dimensions sur ces documents doivent être lues et non mesurées. / The dimensions on these documents must be read and not measured.

GEOTECHNIQUE / Geotechnical
Paterson Group Inc.
154 Colomade Road South Ottawa (Nepean), Ontario Canada K2E 7J5
T 613 226-7381 www.patersongroup.ca

MÉCANIQUE ÉLECTRIQUE / Mechanical Electrical
LCA
15, rue De Valcourt, unité 6, Gatineau, Québec J8T 8H1
T 819 24-8383 www.larouchecanet.ca

STRUCTURE / structure
qdi
635, boulevard de la Gaspie, gatineau (QC) J8T 8G1
T 819 243-4474 lqdi.ca

ARCHITECTURE DE PAYSAGE / Landscape Architect
Lovstek Consultants
5871 Hugh Crockett, Ottawa ON K0A 0V0
T 613 825 0518 larocquelovstek.com

ARCHITECTES / Architect
Stantec
400 - 1331 Clyde Avenue, Ottawa ON K2C 3G4
T 613 724-6337 krc.albor@stantec.com

ARCHITECTES / Architect
NEUF architect(e)s SENCRL
630, St-J. René-Lévesque O. 52e étage, Montréal QC H3B 1S6
T 514 847 1117 NEUFArchitectes.com

SCEAU / Seal



brigit

OUVRAGE / Project
PETRIES II BLOCK 8
112 units
ORLEANS, ON

NO	RÉVISION	DATE (aa-mm-jj)
A	Issue for Coordination	2021-07-16
B	Issued for Coordination	2021-08-13
C	Issued for Permit (Cancelled)	2021-08-30
D	Issued for SPA	2021-09-23
E	Issued for Full Building Permit	2021-10-01
F	Issued for Coordination	2021-10-06
G	Issued for Tender	2021-10-15
H	Issued for SPA	2022-02-25

DESSINÉ PAR Drawn by **PM** VERIFIÉ PAR Checked by **Paul McQ.**
DATE (aa.mm.jj) 10/04/17 ÉCHELLE Scale As indicated

HIGH ROOF PLANS AND ELEVATIONS

RÉVISION Revision NO. DESSIN Dwg Number
H **A206**

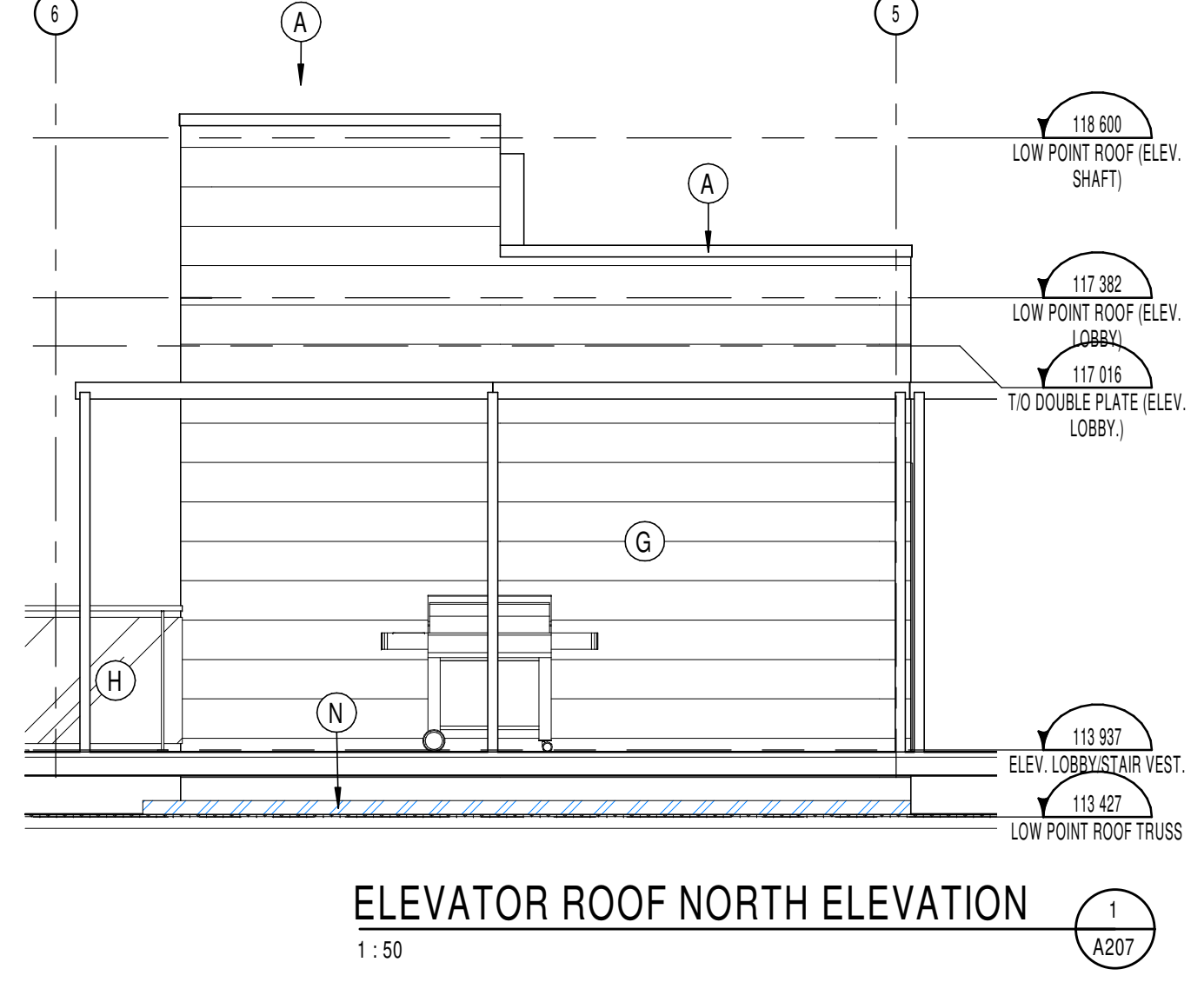
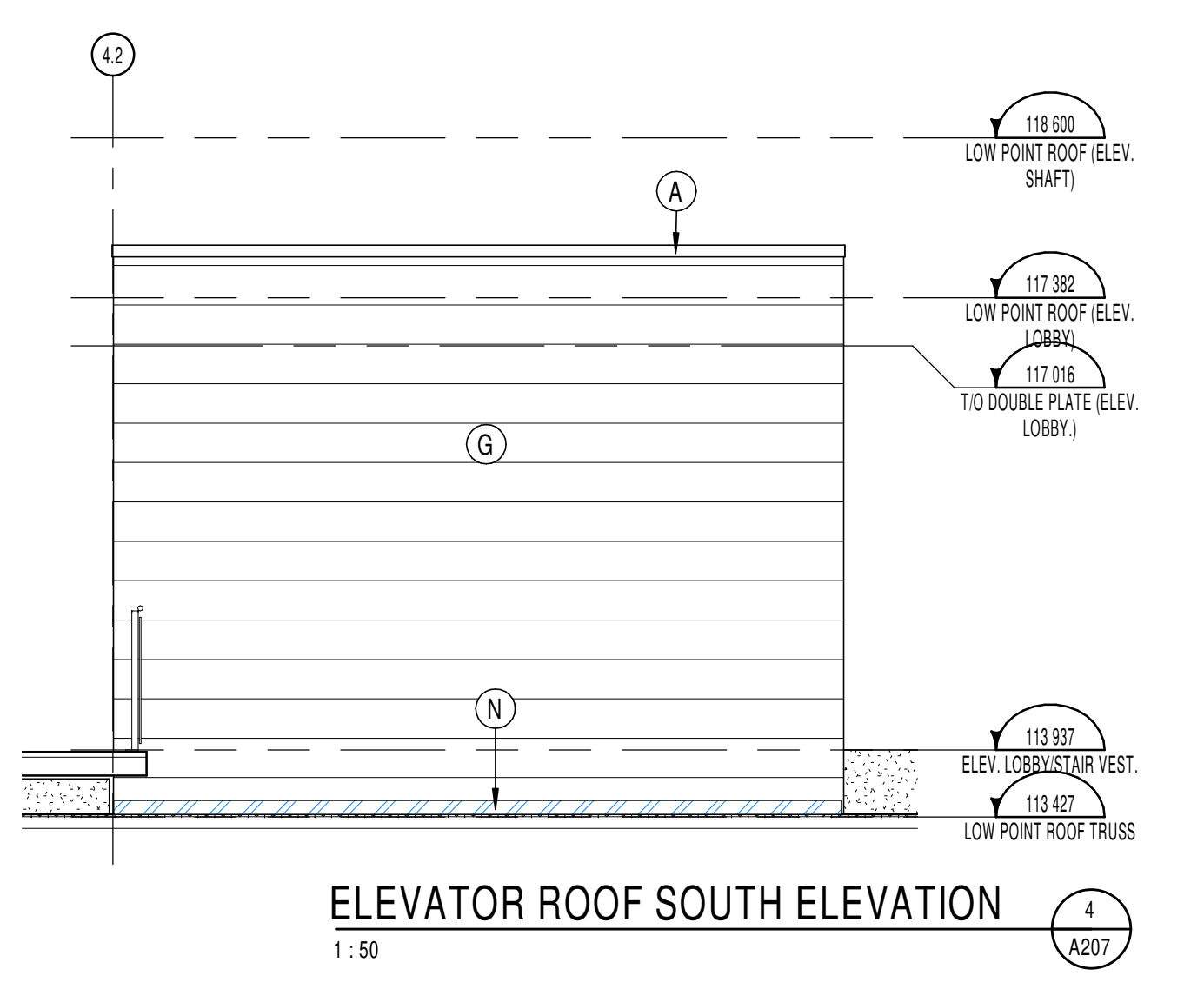
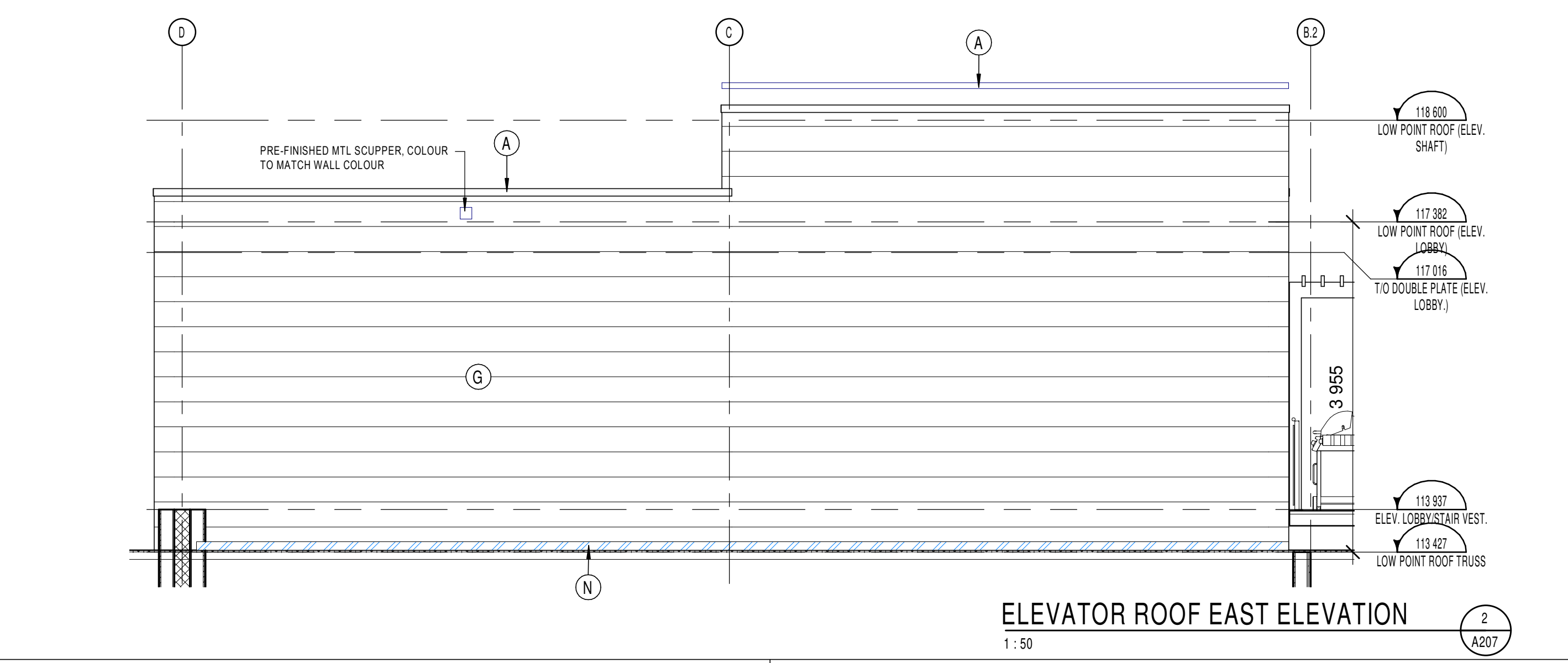
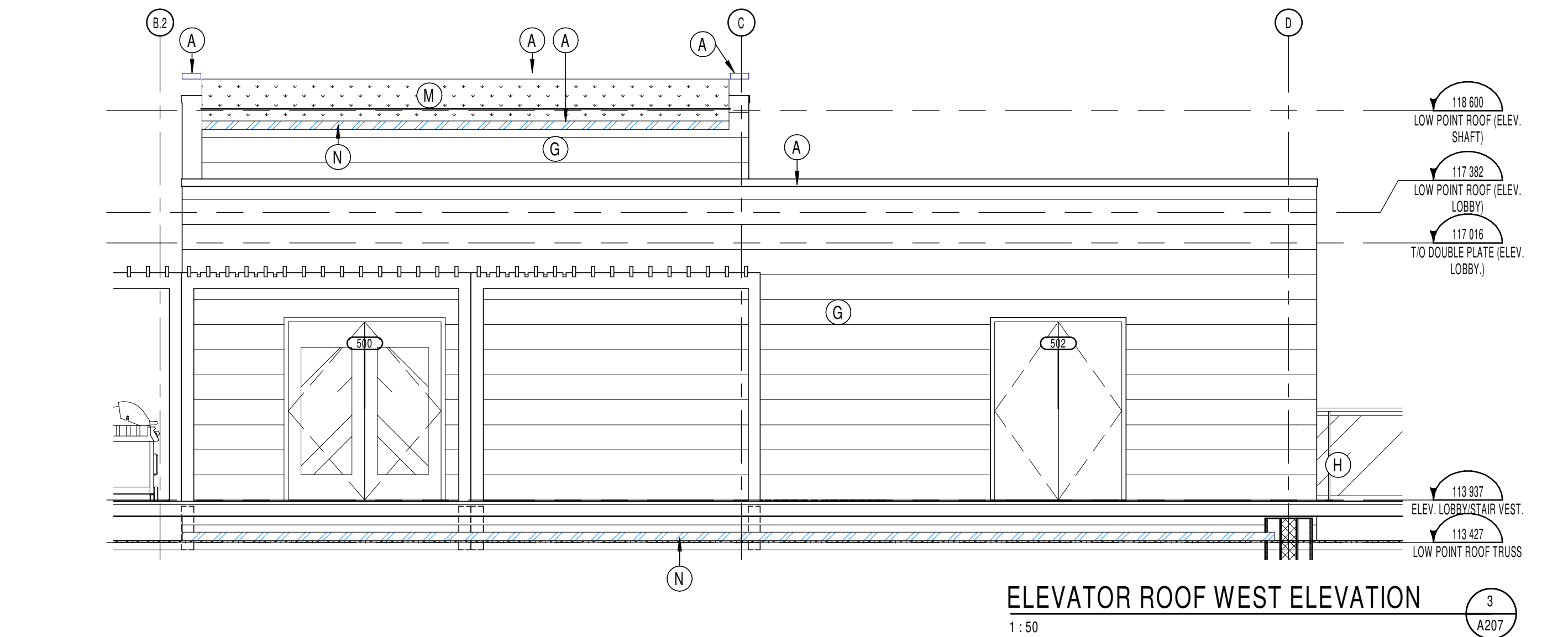
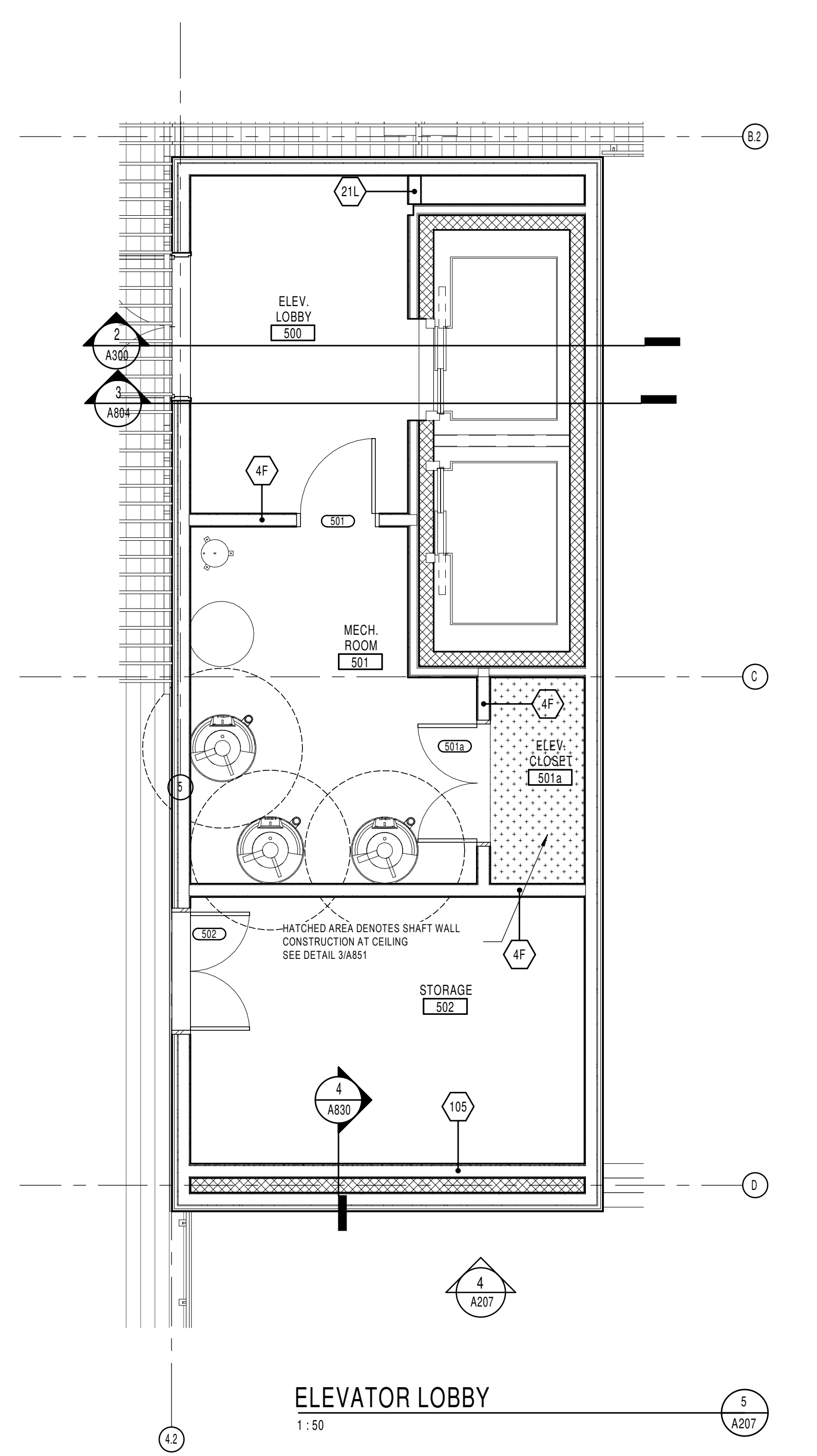
C:\Fichiers Revit\Locaux\P2BL8_10498.02_ARC_INT_R20_pmqqueen.rvt

Exterior finishes legend

A	PREFINISHED MTL PARAPET CAP, COLOUR TO MATCH EXTERIOR WALL COLOUR. PROVIDE MTL CLOSURE & FLASHING AROUND EACH DOOR & WINDOW OPENING. COLOUR TO MATCH WALL COLOUR.	B	JAMES HARDIE FIBER CEMENT LAP COLOUR: LIGHT GREY	B2	JAMES HARDIE FIBER CEMENT LAP COLOUR: CHARCOAL	C	BRAMPTON BRICK ARCHITECTURAL SERIES COLOUR: SILVER	D	BRAMPTON STONE FINESSE SERIES 150x250 STANDARD FINISH COLOUR: ICELAND WHITE	E	METALLIC, DISTINCTION PREPAINTED STEEL SIDING COLOUR: CEDAR	F	PREPAINTED ALUMINUM BALCONY POST CLADDING AND FASCIA AT BALCONIES COLOUR: CHARCOAL	G	METALLIC, DISTINCTION PREPAINTED STEEL SIDING COLOUR: URBAN GREY	H	ALUMINUM GUARDRAIL & POSTS W/ CLEAR GLASS INFILL PANELS, GUARDRAIL & POSTS COLOUR TO MATCH BALCONY POSTS. TYP. SEE SPECS FOR TYPE OF GLASS.	I	METALLIC, DISTINCTION PREPAINTED STEEL SIDING COLOUR: BONEWHITE	J	CONT. CONTROL JOINT ALONG MASONRY. SEE SPEC FOR MAX. SPACING. SEALER COLOUR: MATCH MASONRY.	K	WINDOW FRAME COLOUR: BLACK
L	REFINISHED METAL LOUVER FOR ATTIC VENTILATION, 150x1220mm, COLOUR TO MATCH WALL COLOUR, TYP. @ EACH UNIT	M	VERTICAL HARDIPANEL SIDING SMOOTH FINISH COLOUR: LIGHT GREY TO BE USED ON EXPOSED FOUNDATION WALL NEAR AND AROUND GARAGE DOOR																				

APPROVED
By wildmange at 7:20 pm, Jun 01, 2022

G. Wildman
GERALDINE WILDMAN
ACTING MANAGER, DEVELOPMENT REVIEW EAST
PLANNING, REAL ESTATE & ECONOMIC DEVELOPMENT
DEPARTMENT, CITY OF OTTAWA



NOTES GÉNÉRALES / General Notes

- Ces documents d'architecture sont la propriété exclusive de NEUF architecte(s) et ne peuvent être utilisés, reproduits ou copiés sans autorisation écrite préalable. / These architectural documents are the exclusive property of NEUF architecte(s) and cannot be used, copied or reproduced without written pre-authorization.
- Les dimensions apparaissant sur ces documents doivent être vérifiées par l'entrepreneur avant le début des travaux. / All dimensions which appear on the documents must be verified by the contractor before to start the work.
- Veillez aviser l'architecte de toute dimension erreur et/ou divergence entre ces documents et ceux des autres professionnels. / The architect must be notified of all errors, omissions and discrepancies between these documents and those of the others professionals.
- Les dimensions sur ces documents doivent être lues et non mesurées. / The dimensions on these documents must be read and not measured.

GEOTECHNIQUE / Geotechnical
Paterson Group Inc.
154 Colomdale Road South Ottawa (Nepean), Ontario Canada K2E 7J5
T 613 226-7381 www.patersongroup.ca

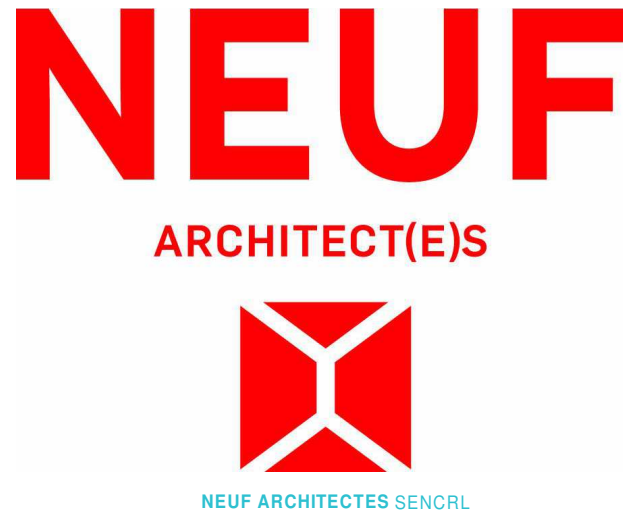
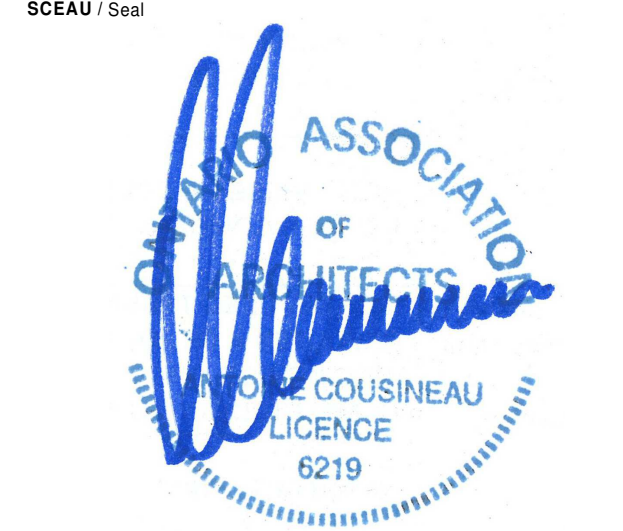
MÉCANIQUE ÉLECTRIQUE / Mechanical Electrical
LCA
15, rue De Valcourt, unité 6, Gatineau, Québec J8T 8H1
T 819 24-8383 www.larouchecounsel.ca

STRUCTURE / structure
qdi
635, boulevard de la Gaspé, gatineau (QC) J8T 8G1
T 819 243-4474 qdi.ca

ARCHITECTURE DE PAYSAGE / Landscape Architect
Levstek Consultants
5971 Hugh Crockett, Ottawa ON K1A 5W4
T 613 825 0519 larouchelevstek.com

CIVIL / Civil
Stantec
400 - 1331 Clyde Avenue, Ottawa ON K2C 3G4
T 613 724-6337 krc.kalbor@stantec.com

ARCHITECTES / Architects
NEUF architecte(s) SENCLR
630, St-Jul, Rues-Lévesque O. 52e Etages, Montréal QC H3B 1S6
T 514 847 1117 NEUFarchitectes.com



CLIENT / Client
brigit

OUVRAGE / Project
PETRIES II BLOCK 8
112 units
ORLEANS, ON

NO	RÉVISION	DATE (aa-mm-jj)
A	Issue for Coordination	2021-07-16
B	Issued for Coordination	2021-08-13
C	Issued for Permit (Cancelled)	2021-08-30
D	Issued for SPA	2021-09-23
E	Issued for Full Building Permit	2021-10-01
F	Issued for Coordination	2021-10-06
G	Issued for Tender	2021-10-15
H	Issued for SPA	2022-02-25

DESSIN PAR Drawn by **PM**
DATE (aa.mm.jj) **08/14/17**
TITRE DU DESSIN Drawing Title **HIGH ROOF ELEVATIONS**

VERIFIÉ PAR Checked by **Paul McQ.**
ÉCHELLE Scale **As indicated**

RÉVISION Revision **H**
NO. DESSIN Dwg Number **A207**
#18062

C:\Fichiers Revit\Locaux\P2BL8_10498.02_ARC_INT_R20_pmaqueen.rvt