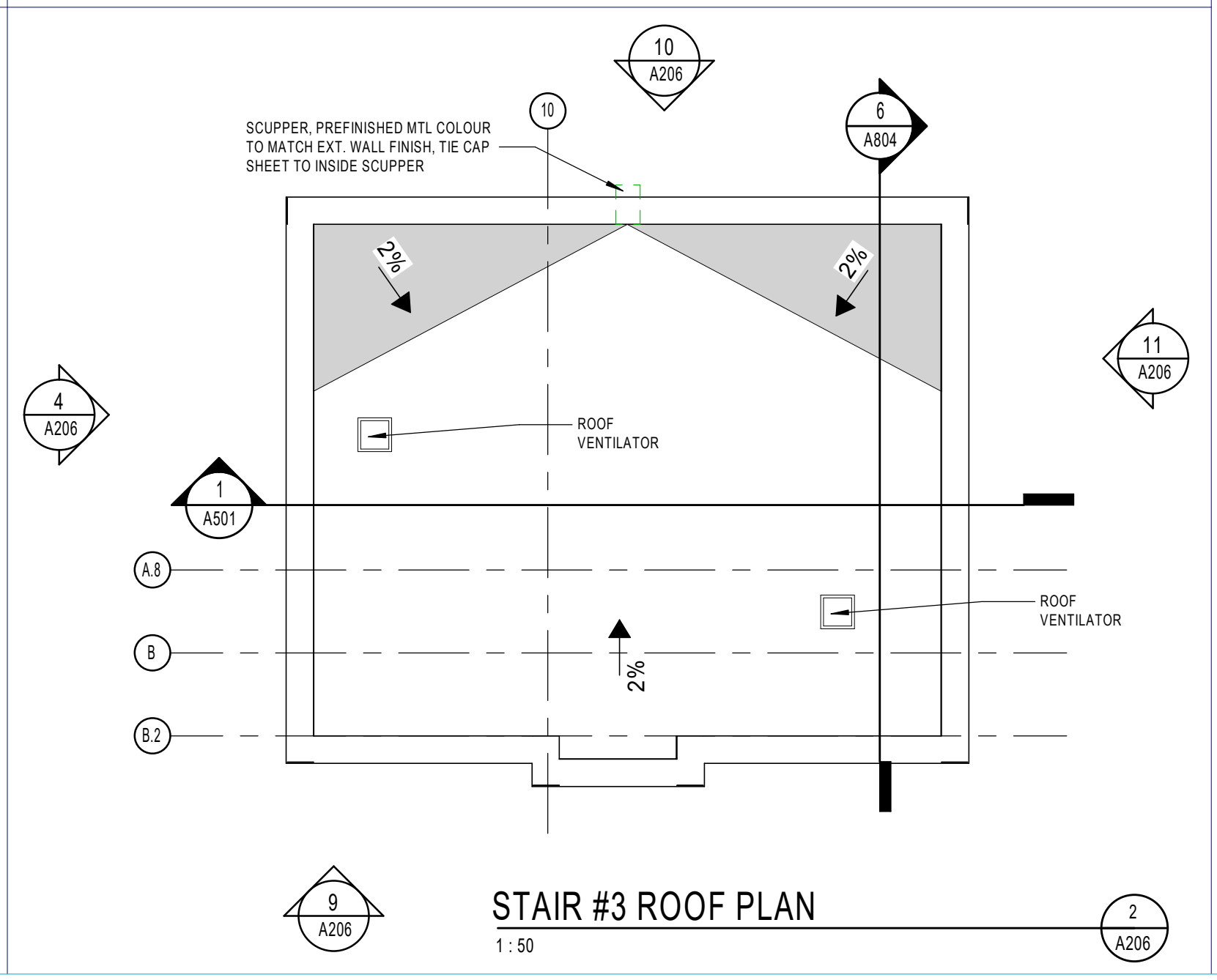
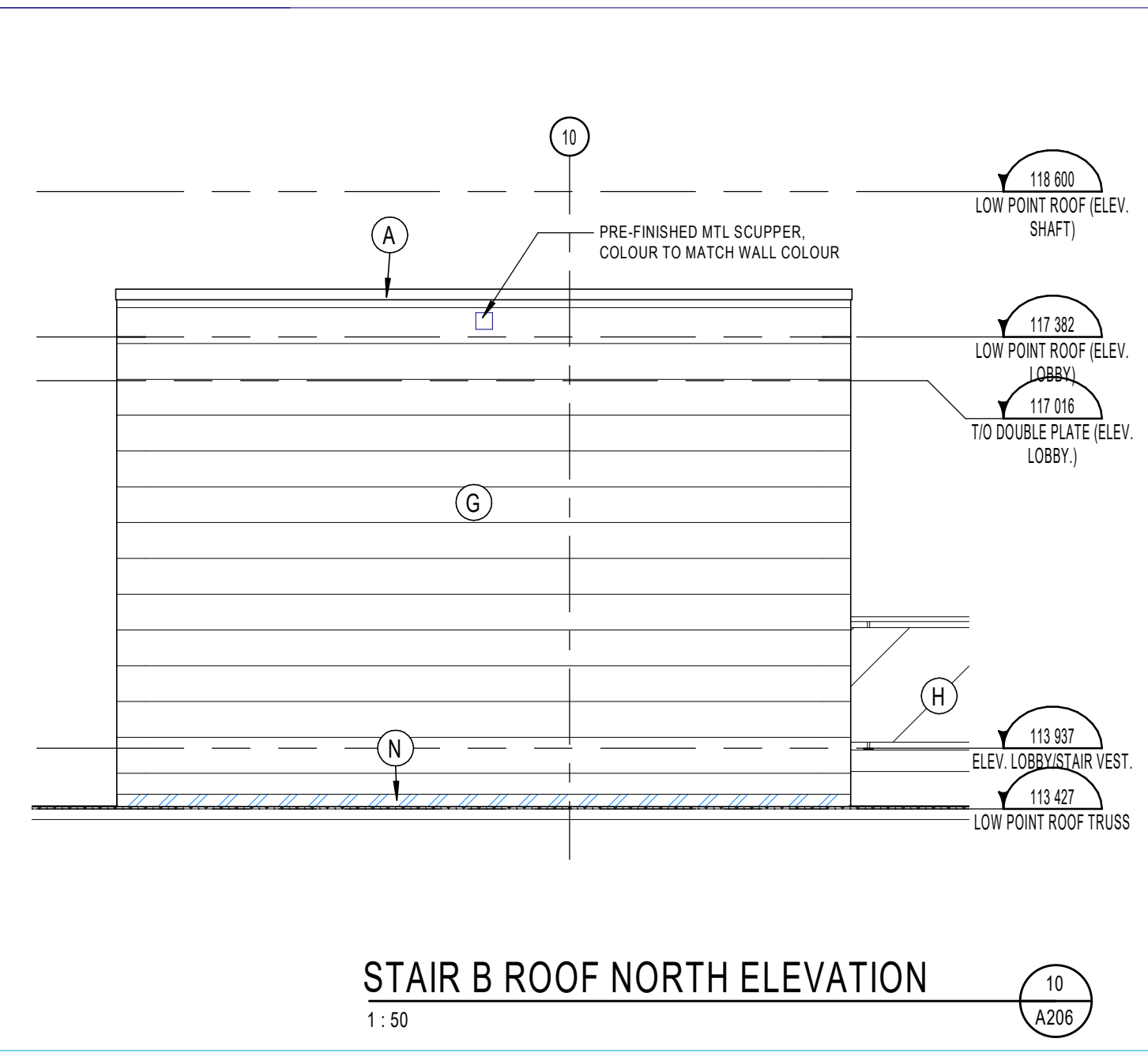
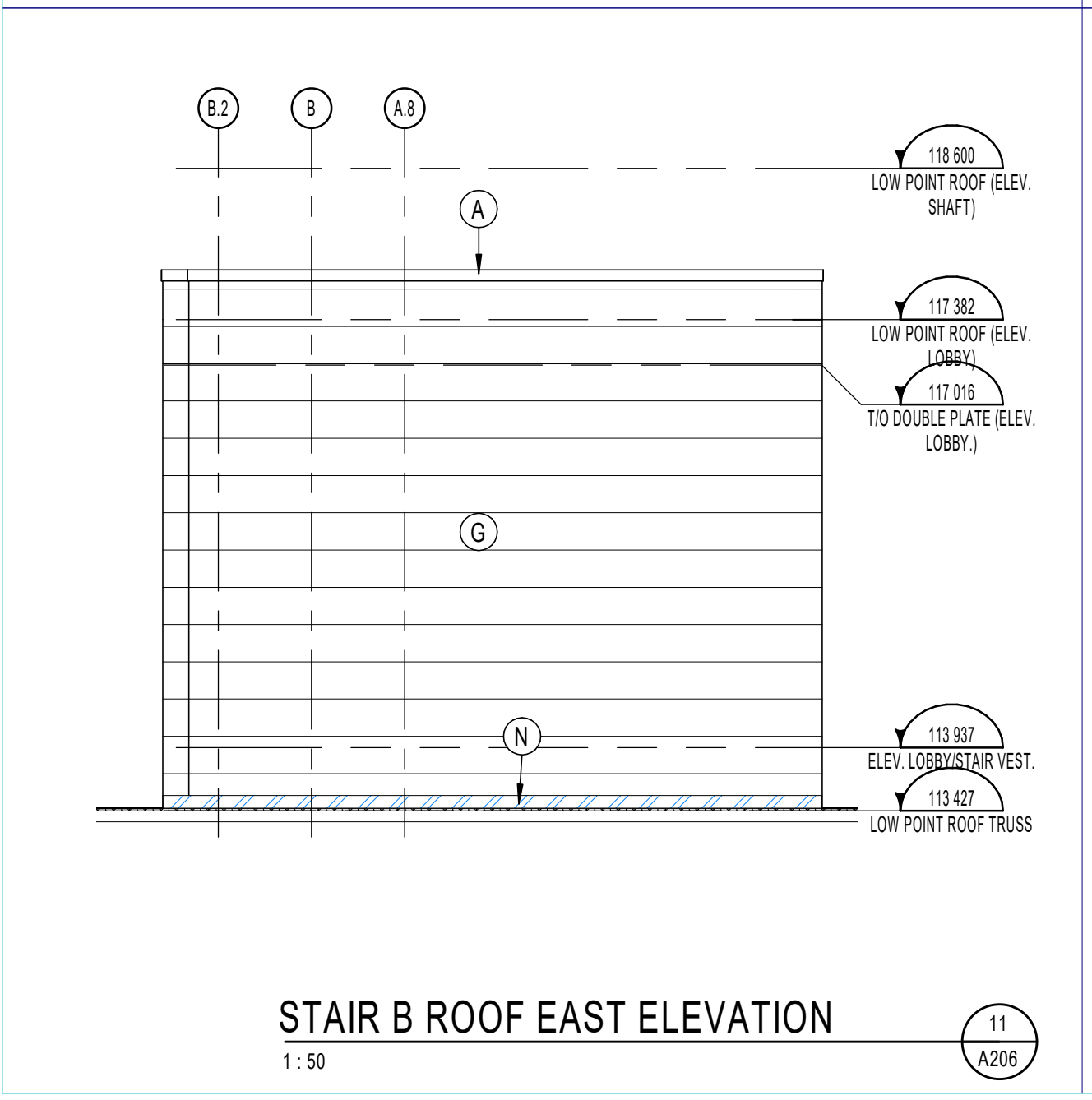
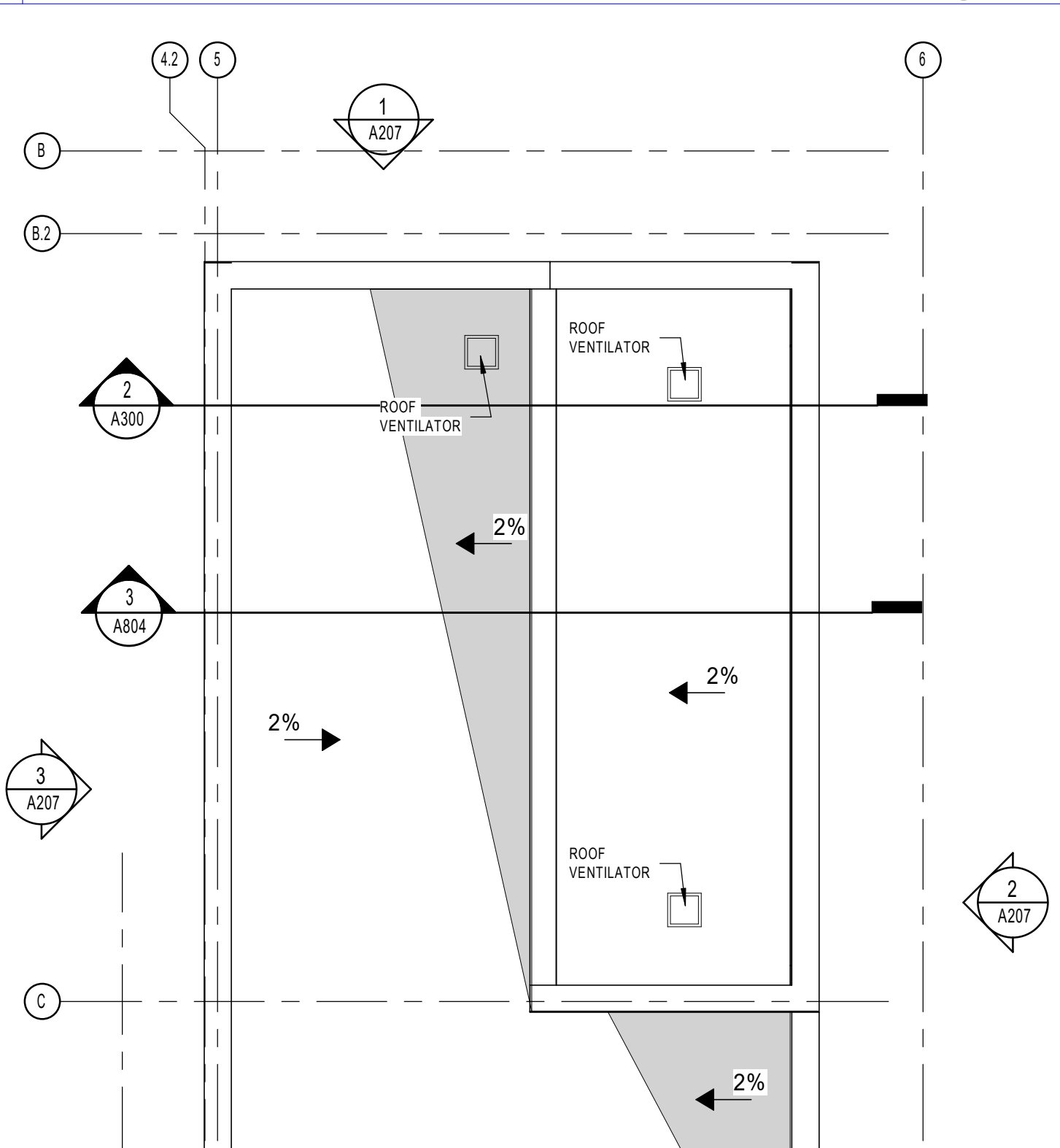
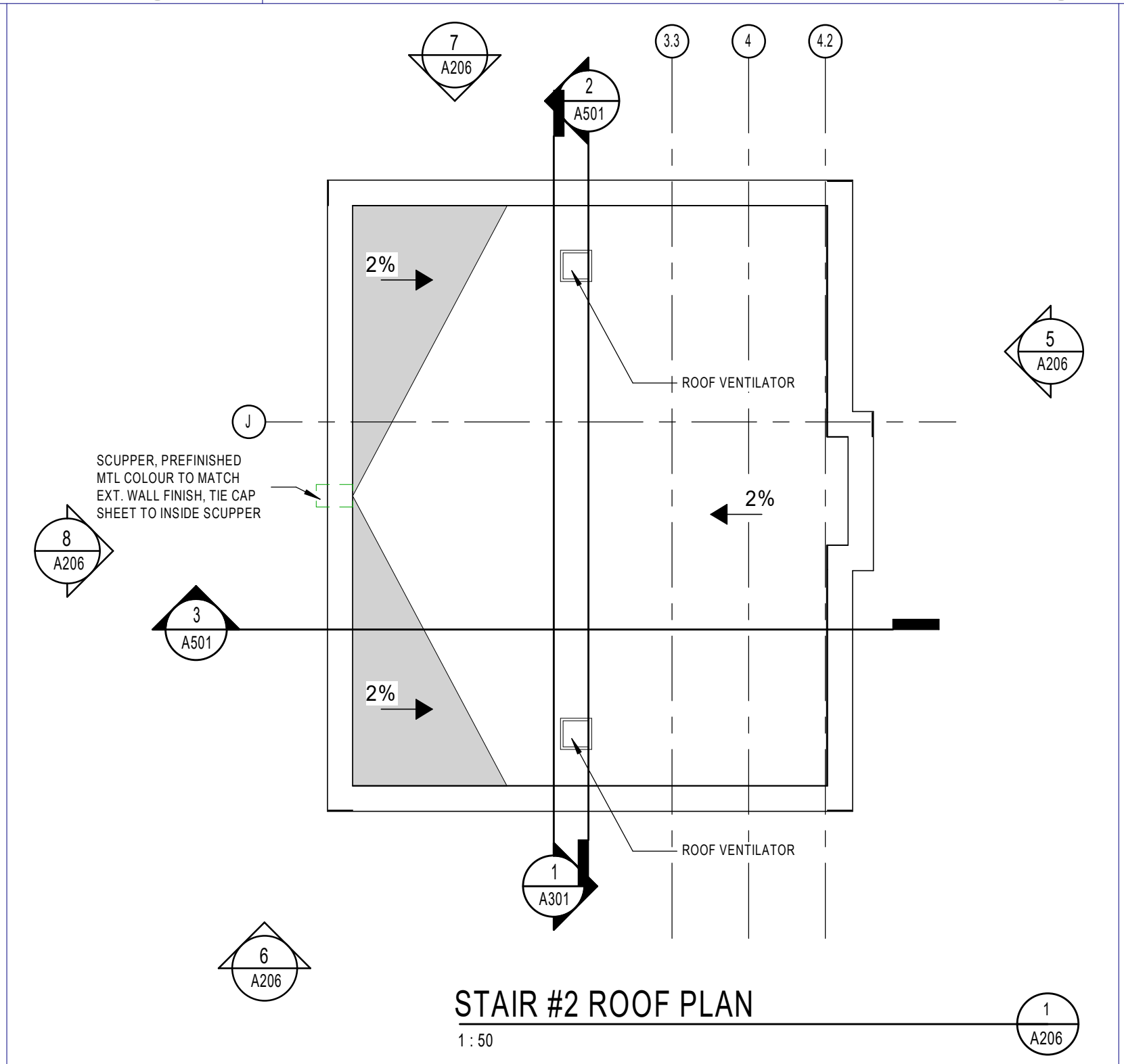
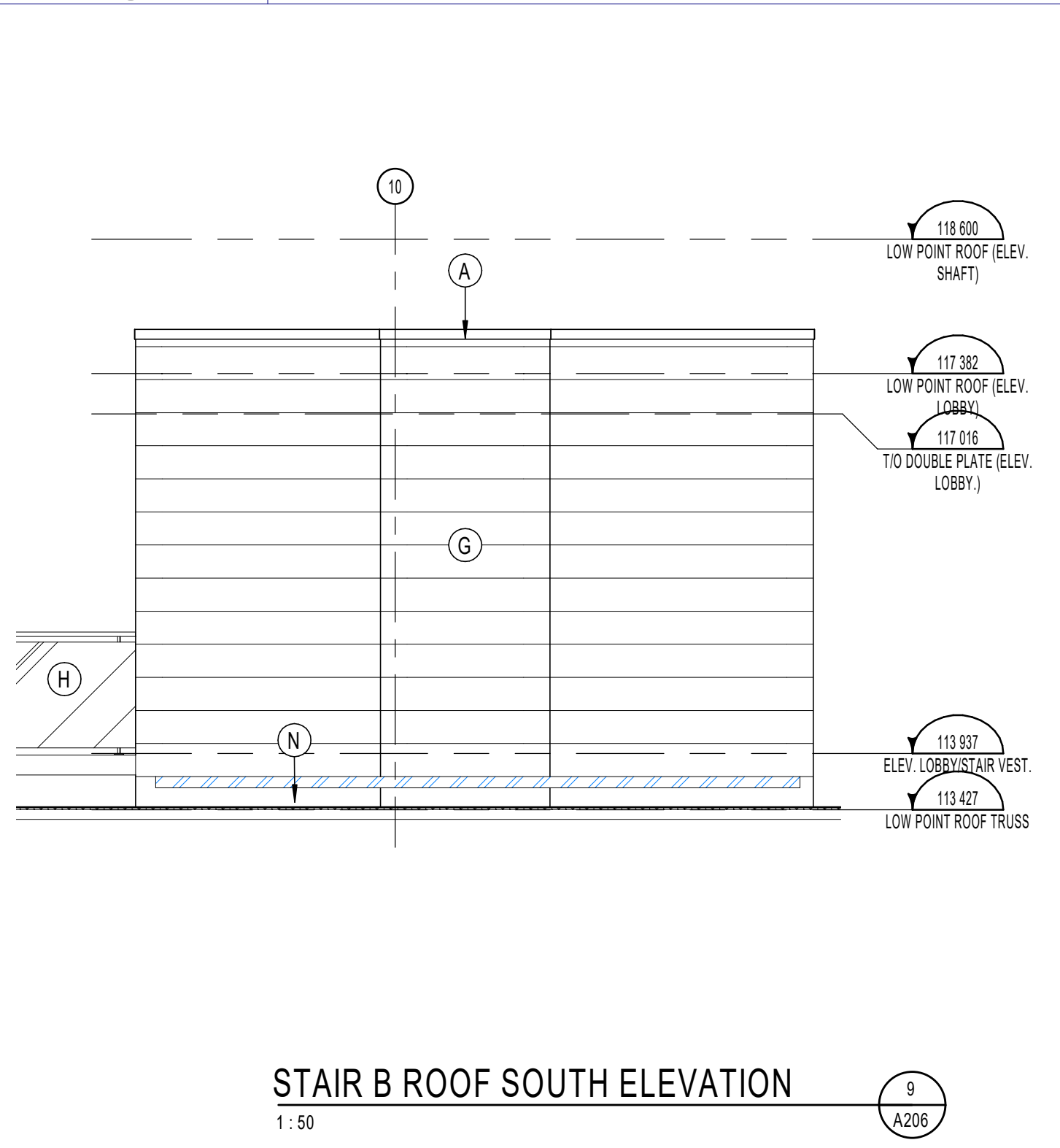
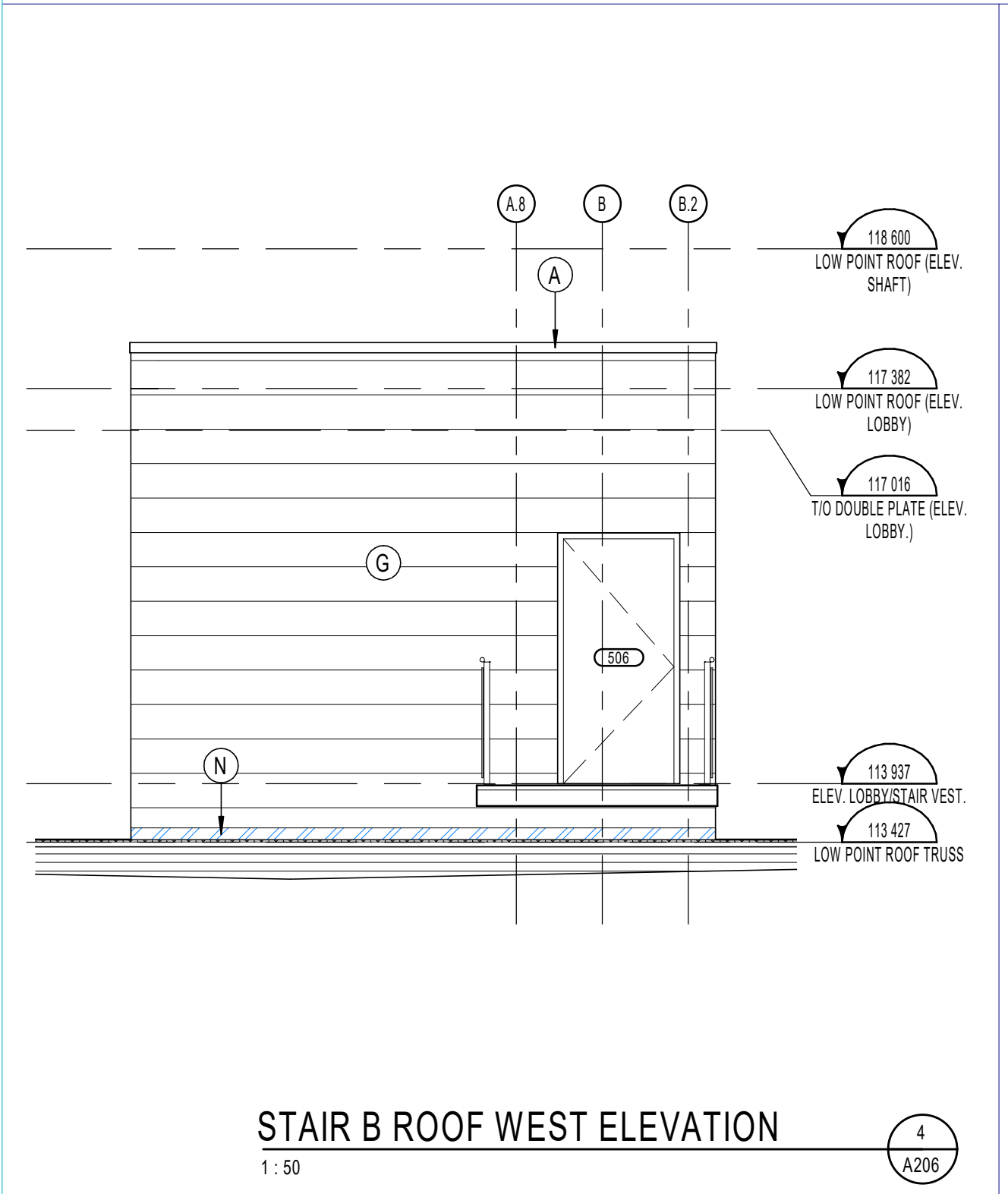
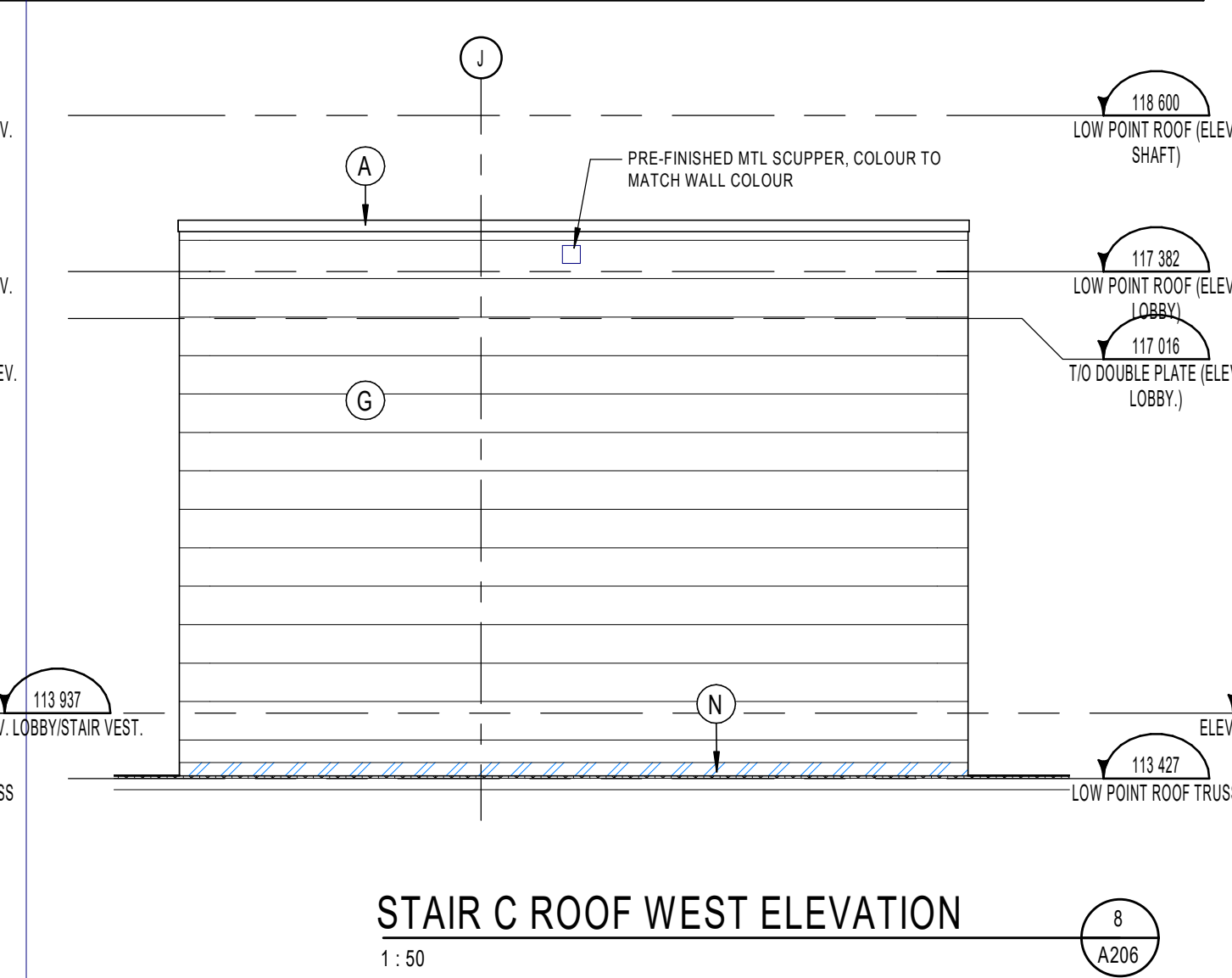
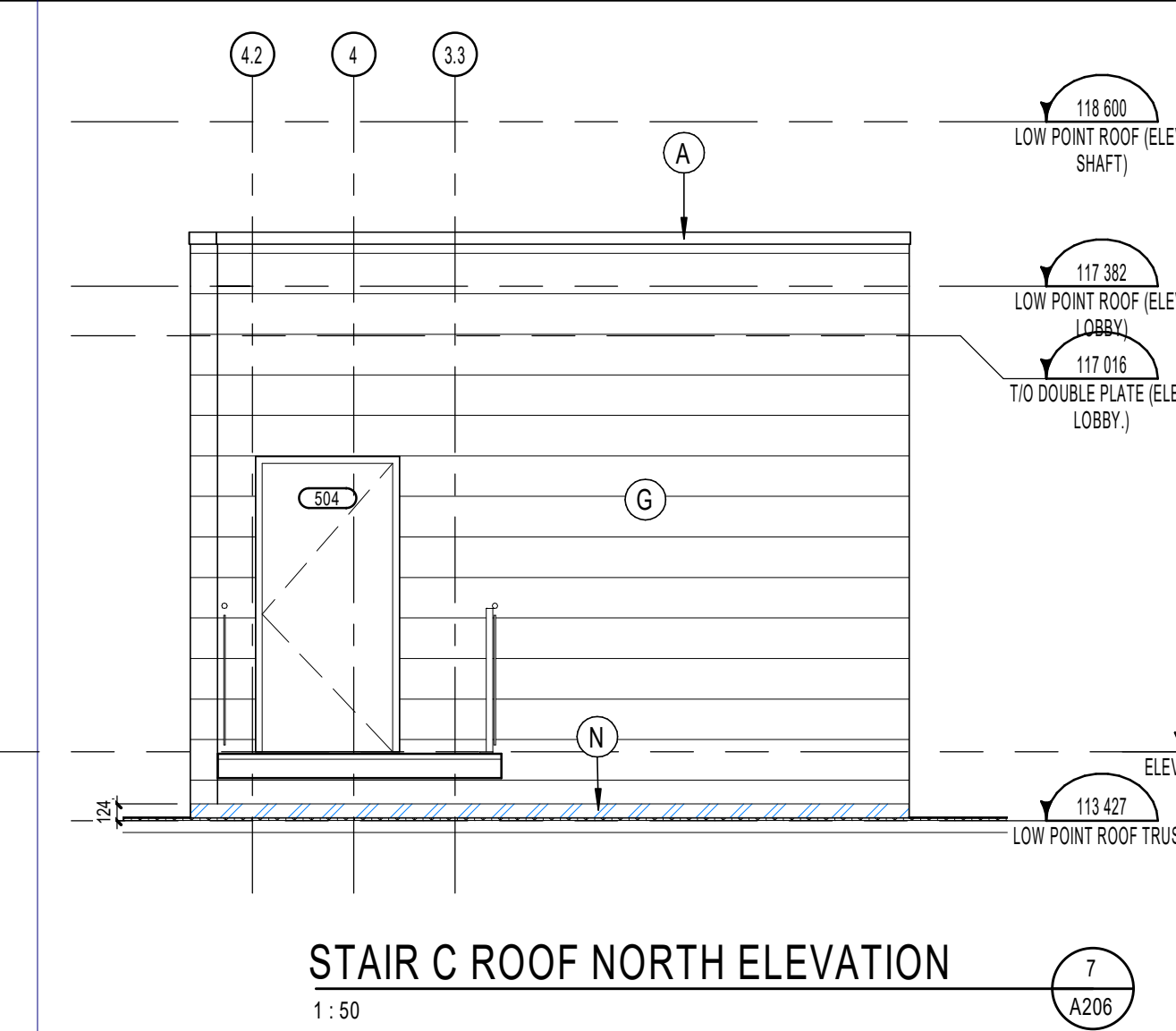
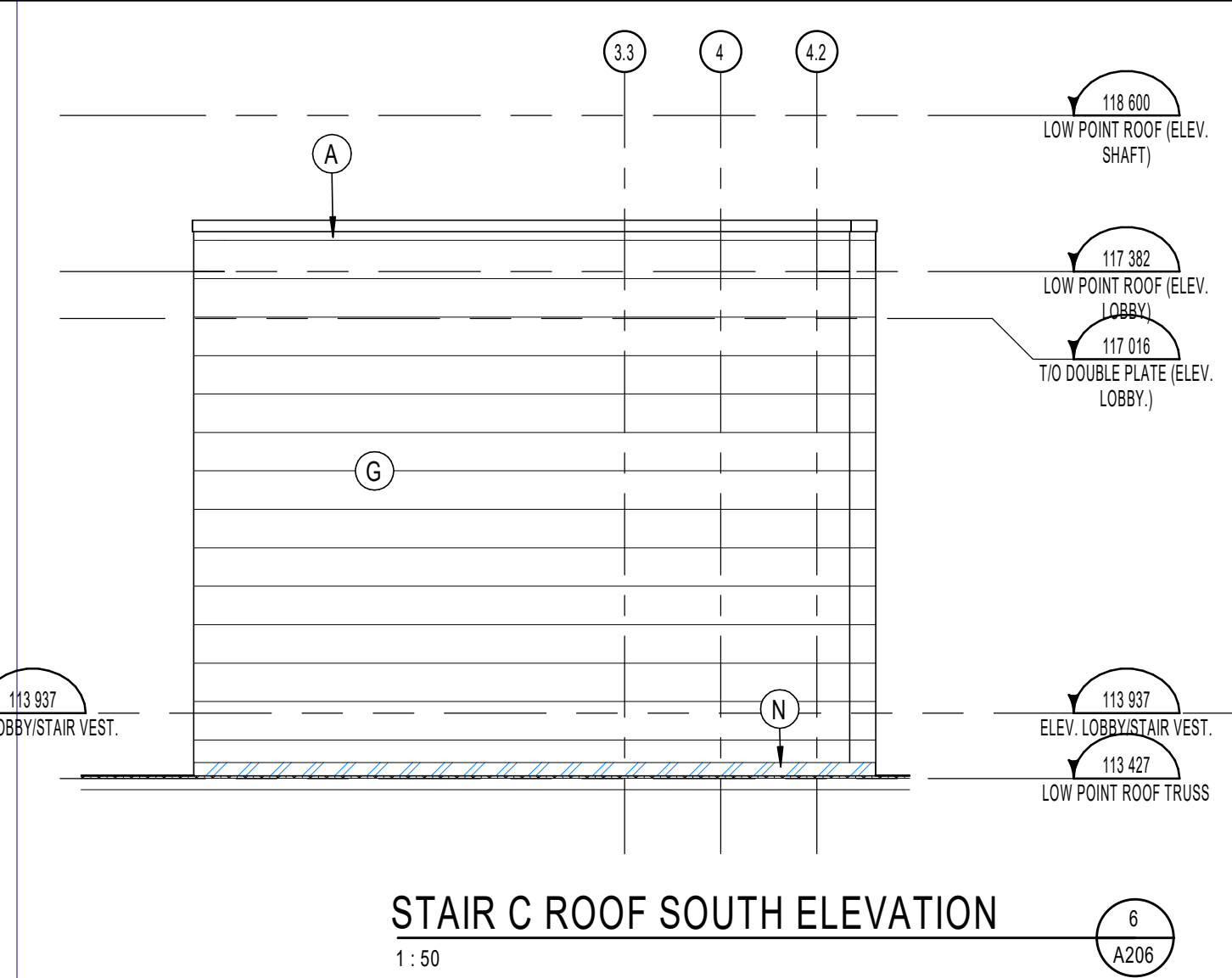
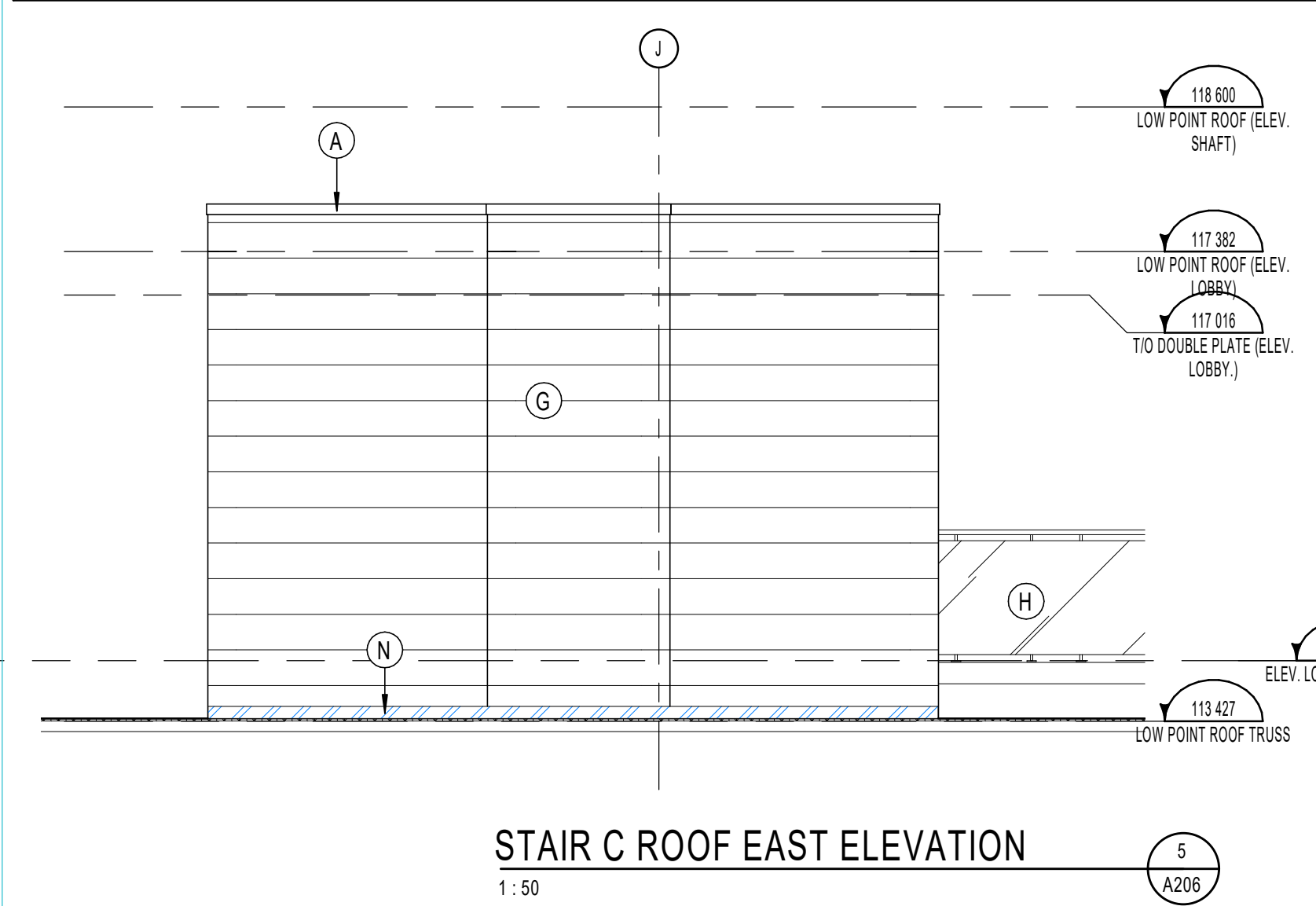


**Exterior finishes legend**

<b>A</b>	PRE-FINISHED MTL PARAPET CAP. COLOUR TO MATCH EXTERIOR WALL COLOUR. PROVIDE MTL COLOURS & FLASHING AROUND EACH DOOR & WINDOW OPENING. COLOUR TO MATCH WALL COLOUR.	<b>B</b>	JAMES WOOD FIBER CEMENT LAP COLOUR: LIGHT GREY. <b>NOT USED</b>	<b>B2</b>	HARDE FIBER CEMENT LAP COLOUR: CHARCOAL. <b>NOT USED</b>	<b>C</b>	BRAMPTON BRICK ARCHITECTURAL SERIES COLOUR: SILVER	<b>D</b>	BRAMPTON STONE FINESSE SERIES 150x250. STANDARD FINISH COLOUR: ICELAND WHITE	<b>E</b>	METALLIC, DISTINCTION PREPAINTED STEEL SIDING COLOUR: CEDAR.	<b>F</b>	PREPAINTED ALUMINUM BALCONY POST CLADDING AND FASCIA AT BALCONIES COLOUR: CHARCOAL	<b>G</b>	METALLIC, DISTINCTION PREPAINTED STEEL SIDING COLOUR: URBAN GREY	<b>G2</b>	METALLIC, DISTINCTION PREPAINTED STEEL SIDING COLOUR: CHARCOAL	<b>H</b>	ALUMINUM GUARDRAIL & POSTS W/ CLEAR GLASS INFILL PANELS. GUARDRAIL & POSTS COLOUR TO MATCH BALCONY POSTS. TYP. SEE SPECS FOR TYPE OF GLASS.	<b>I</b>	METALLIC, DISTINCTION PREPAINTED STEEL SIDING COLOUR: BONEWHITE	<b>J</b>	CONT. CONTROL JOINT ALONG MASONRY. SEE SPEC FOR MAX. SPACING. SEALER COLOUR: MATCH MASONRY.	<b>K</b>	WINDOW FRAME COLOUR: BLACK
<b>L</b>	PRE-FINISHED METAL LOUVER FOR ATTIC VENTILATION. 150x120mm. COLOUR TO MATCH WALL COLOUR. TYP. @ EACH UNIT	<b>M</b>	VERTICAL HARDEPANEL SIDING SMOOTH FINISH COLOUR: LIGHT GREY TO BE USED ON EXPOSED FOUNDATION WALL NEAR AND AROUND GARAGE DOOR																						

**NOTES GÉNÉRALES / General Notes**

- Ces documents d'architecture sont la propriété exclusive de NEUF architect(e)s et ne peuvent être utilisés, reproduits ou copiés sans autorisation écrite préalable. / These architectural documents are the exclusive property of NEUF architect(e)s and cannot be used, copied or reproduced without written pre-authorization.
- Les dimensions apparaissant sur ces documents doivent être vérifiées par l'entrepreneur avant le début des travaux. / All dimensions which appear on the documents must be verified by the contractor before to start the work.
- Vous devez aviser l'architecte de toute dimension erreur et/ou divergence entre ces documents et ceux des autres professionnels. / The architect must be notified of all errors, omissions and discrepancies between these documents and those of the others professionals.
- Les dimensions sur ces documents doivent être lues et non mesurées. / The dimensions on these documents must be read and not measured.



**GEOTECHNIQUE / Géotechnical**  
**Paterson Group Inc.**  
154 Colomade Road South Ottawa (Nepean), Ontario Canada K2E 7J5  
T 613 226-7381 www.patersongroup.ca

**MÉCANIQUE ÉLECTRIQUE / Mechanical Electrical**  
**LCA**  
15, rue De Vauquart, unité 6, Gatineau, Québec J8T 8H1  
T 819 24-8383 www.larouchecounsel.ca

**STRUCTURE / structure**  
**qdi**  
635, boulevard de la Gaspie, gatineau (QC) J8T 8G1  
T 819 243-4474 qdi.ca

**ARCHITECTURE DE PAYSAGE / Landscape Architect**  
**Levstek Consultants**  
5971 Hugh Croft, Ottawa ON K0A 5W0  
T 613 825 0519 larocquelevstek.com

**ARCHITECTES / Architects**  
**Stantec**  
400 - 1331 Clyde Avenue, Ottawa ON K2C 3G4  
T 613 724-6337 krs.albor@stantec.com

**ARCHITECTES ARCHITECT**  
**NEUF architect(e)s SENCRL**  
630, St-J. Remi-Lévesque O. 32e étage, Montréal QC H3B 1S6  
T 514 847 1117 NEUFarchitectes.com

**SCEAU / Seal**



**CLIENT / Client**  
**brigil**

**OUVRAGE / Project**  
**PETRIES II BLOCK 8**  
112 units  
ORLEANS, ON

**NO PROJET No.**  
10498.02

NO	RÉVISION	DATE (aa-mm-ii)
A	Issue for Coordination	2021-07-16
B	Issued for Coordination	2021-08-13
C	Issued for Permit	2021-08-30
D	Issued for SPA	2021-09-23

**DESSINÉ PAR / Drawn by**  
PM

**VERIFIÉ PAR / Checked by**  
Paul McQ.

**DATE (aa.mm.ii)**  
10/04/17

**ÉCHELLE / Scale**  
As indicated

**TITRE DU DESSIN / Drawing Title**  
**HIGH ROOF PLANS AND ELEVATIONS**

**RÉVISION / Revision**  
**D**

**NO. DESSIN / Dwg Number**  
**A206**

C:\Fichiers Revit\Localux\P2BL8\_10498.02\_ARC\_INT\_R20\_pmqqueen.rvt