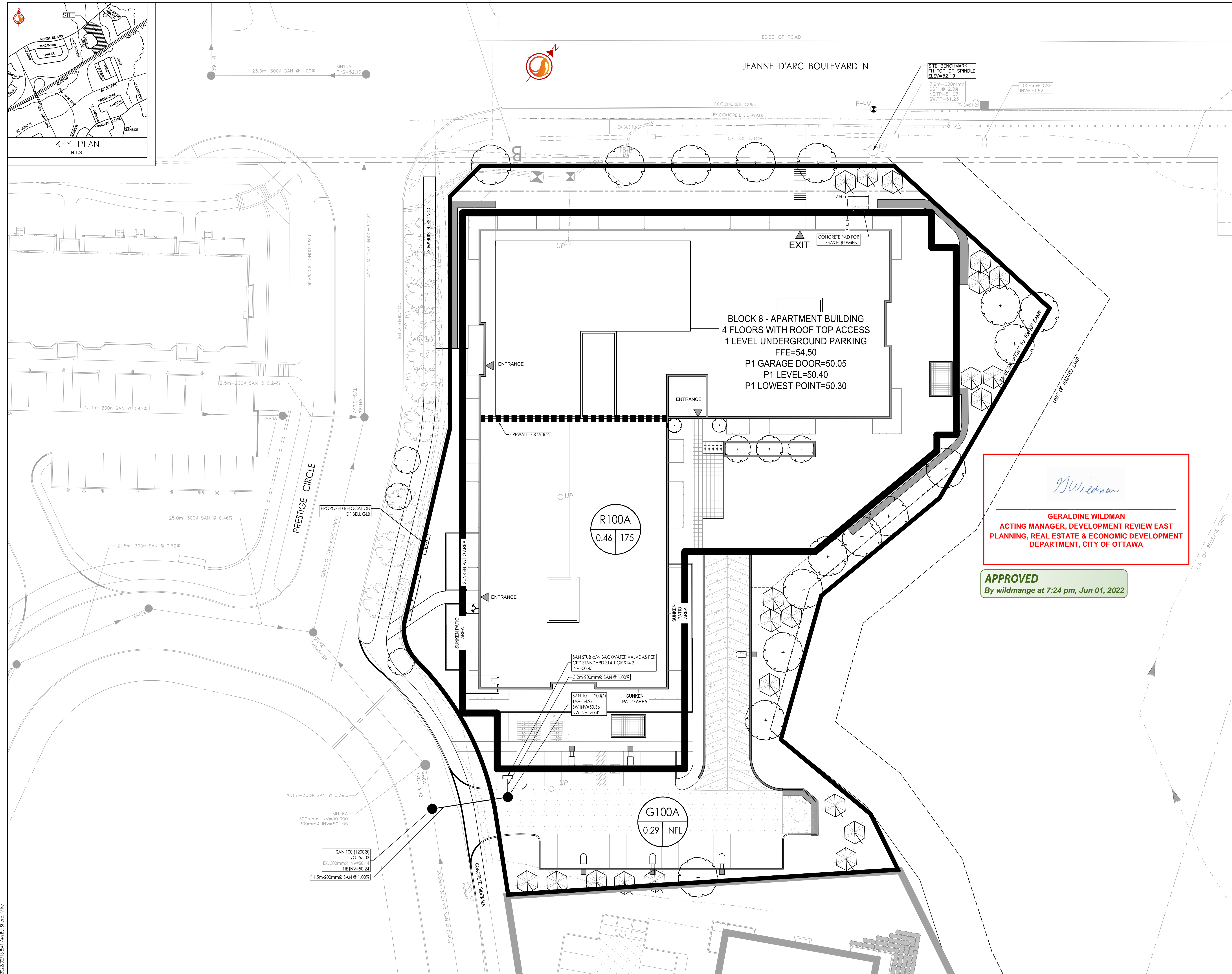


Legend

- SANITARY DRAINAGE AREA ID#
- POPULATION
- SANITARY DRAINAGE AREA ID#
- INFILTRATION RATES
- SANITARY DRAINAGE AREA
- PROPOSED SANITARY SEWER

Notes

SANITARY STATS	
POPULATION COUNTS	
2 - STUDIO APTS @ 1.4PPU = 3 PEOPLE	
90 - 1 BEDROOM APTS @ 1.4PPU = 126 PEOPLE	
16 - 2 BEDROOM APTS @ 2.1PPU = 34 PEOPLE	
4 - 3 BEDROOM APTS @ 3.1PPU = 12 PEOPLE	
TOTAL POPULATION = 175	



G. Wildman
GERALDINE WILDMAN
ACTING MANAGER, DEVELOPMENT REVIEW EAST
PLANNING, REAL ESTATE & ECONOMIC DEVELOPMENT
DEPARTMENT, CITY OF OTTAWA

APPROVED
By wildmange at 7:24 pm, Jun 01, 2022

Revision	By	Appd.	YY.MM.DD	
4	REVISD AS PER CITY COMMENTS	MJS	AMP	22.02.16
3	ISSUED FOR TENDER	MJS	KH	21.10.01
2	REVISD AS PER CITY COMMENTS	MJS	TR	21.09.20
1	ISSUED AS PER NEW SITE PLAN AND CITY COMMENTS	MJS	AMP	21.03.24
0	ISSUED FOR SPA	MJS	AMP	19.12.13

Permit-Seal

Client/Project
**BRIGIL
PETRIE'S LANDING II**

**BLOCK 8
180 Prestige Circle
OTTAWA, ON, CANADA**

Title
SANITARY DRAINAGE PLAN

Project No. 160401331
Drawing No. SAN-1
Scale 1:250
Sheet 6 of 6
Revision 4

V:\11_04\160401331\160401331_Petrie's Landing Block 8.dwg
 2022/02/16 10:51 AM
 2022/02/16 10:51 AM
 ORIGINAL SHEET - ARCH D

D07-12-19-0212